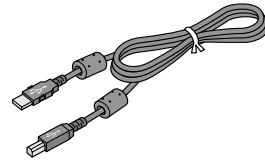
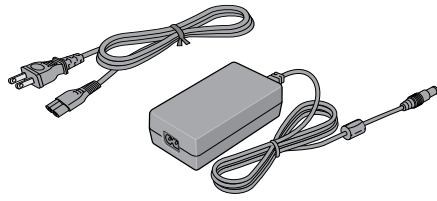
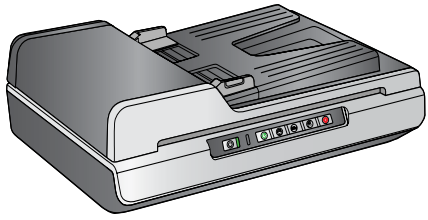


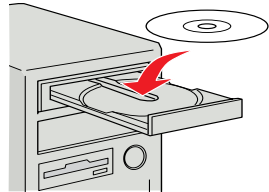
1 Unpack



2 Install software

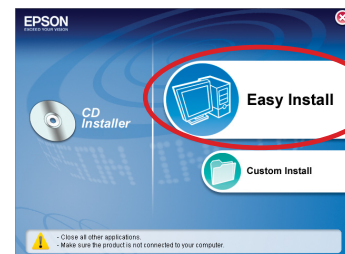


Do not connect the USB cable yet.



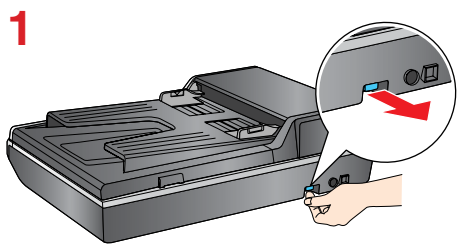
For Windows, if you don't see this screen, double-click the CD-ROM icon.

For Mac, double-click the Mac OS X icon.

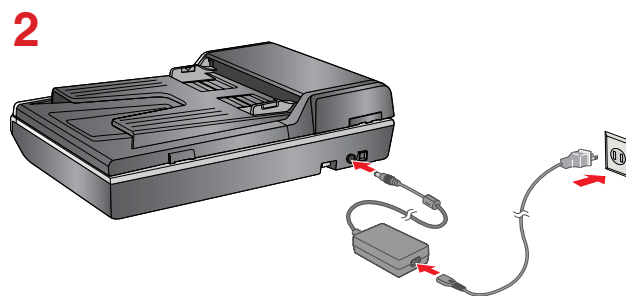


Follow the on-screen instructions and select the default options.

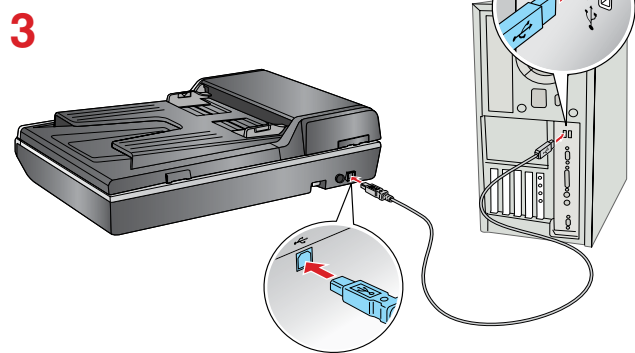
3 Connect and turn on



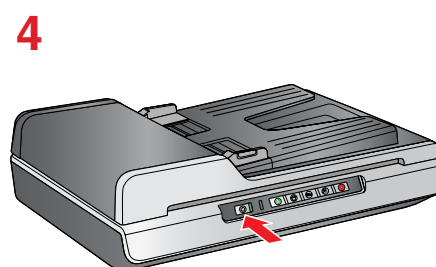
Unlock the transportation lock.



Plug the AC adapter into an electrical outlet.

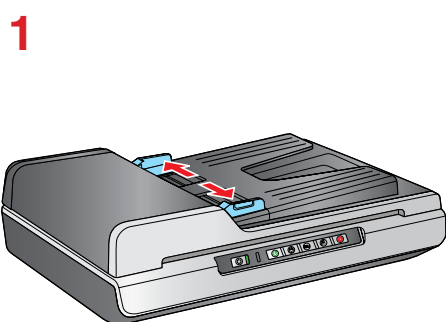


Connect the scanner to your computer.

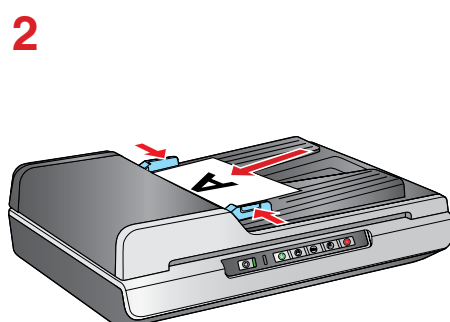


Turn on the scanner.

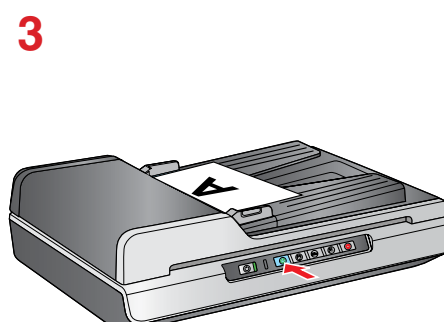
4 Scan a document



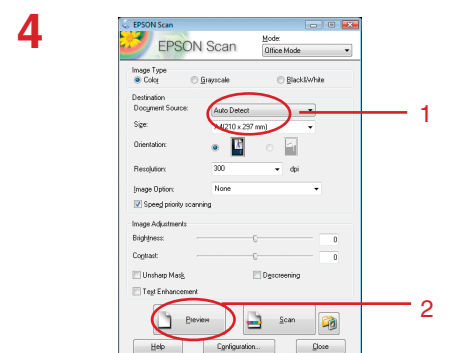
Slide the edge guides outward.



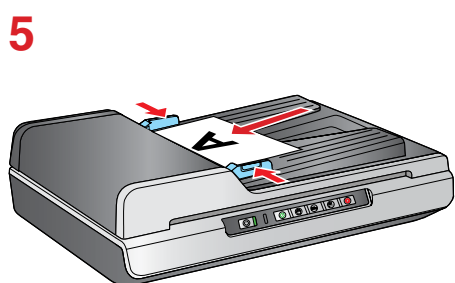
Load the first page of your original document face-up and top edge first. Then slide in the edge guides.



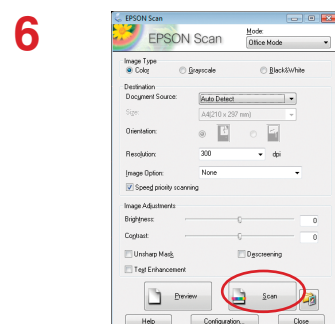
Press the Start button.



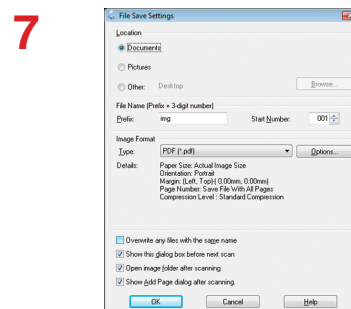
Make sure **Auto Detect** is selected, then click **Preview**.



Remove the first page after it ejects. Then place it on top of the rest of your document (up to 40 pages) and reload it.



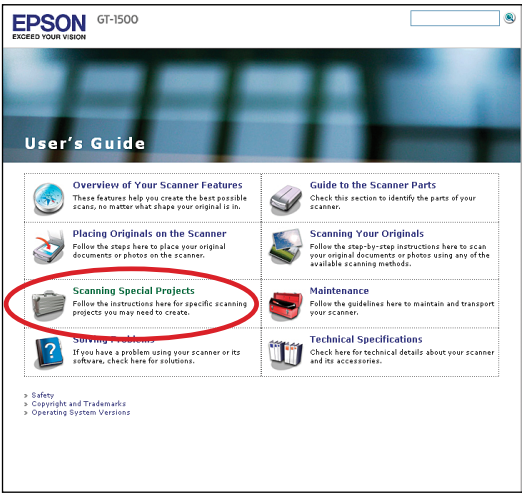
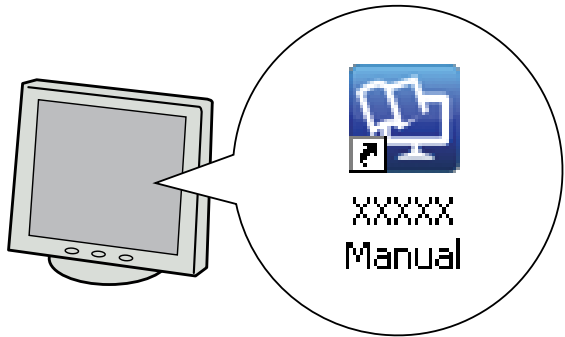
Click **Scan**.



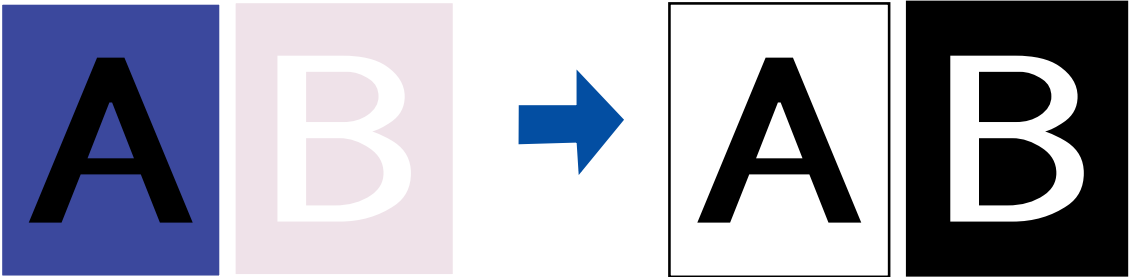
Select your file settings and click **OK**.

Note: You can also place documents or photos directly on the document table glass and scan them from there. See your on-screen *User's Guide* for instructions.

View the On-screen User's Guide to:



Enhance Text



When you scan documents, you can sharpen the text and increase accuracy.

Note: For more information about this and other features, see your on-screen *User's Guide*.

Epson Scan

