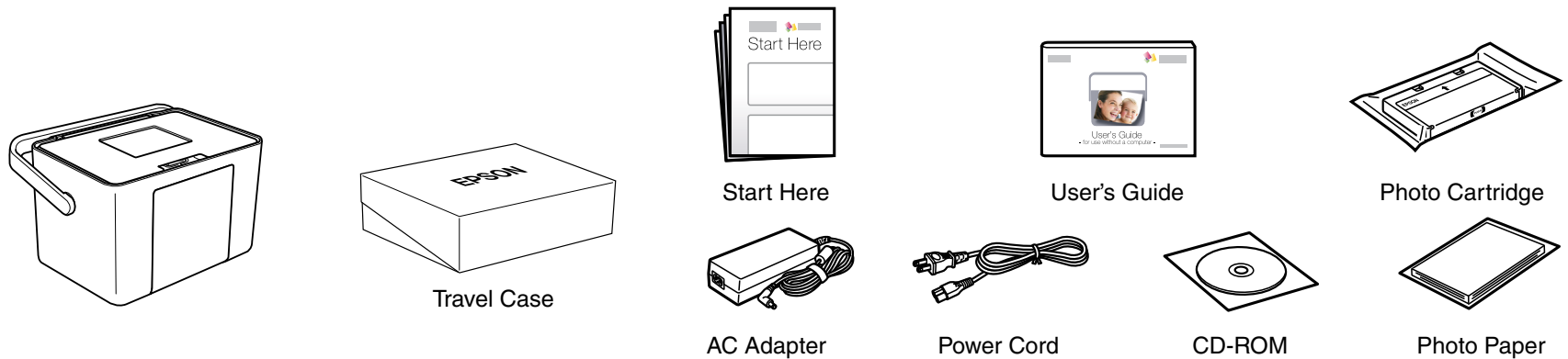


Start Here

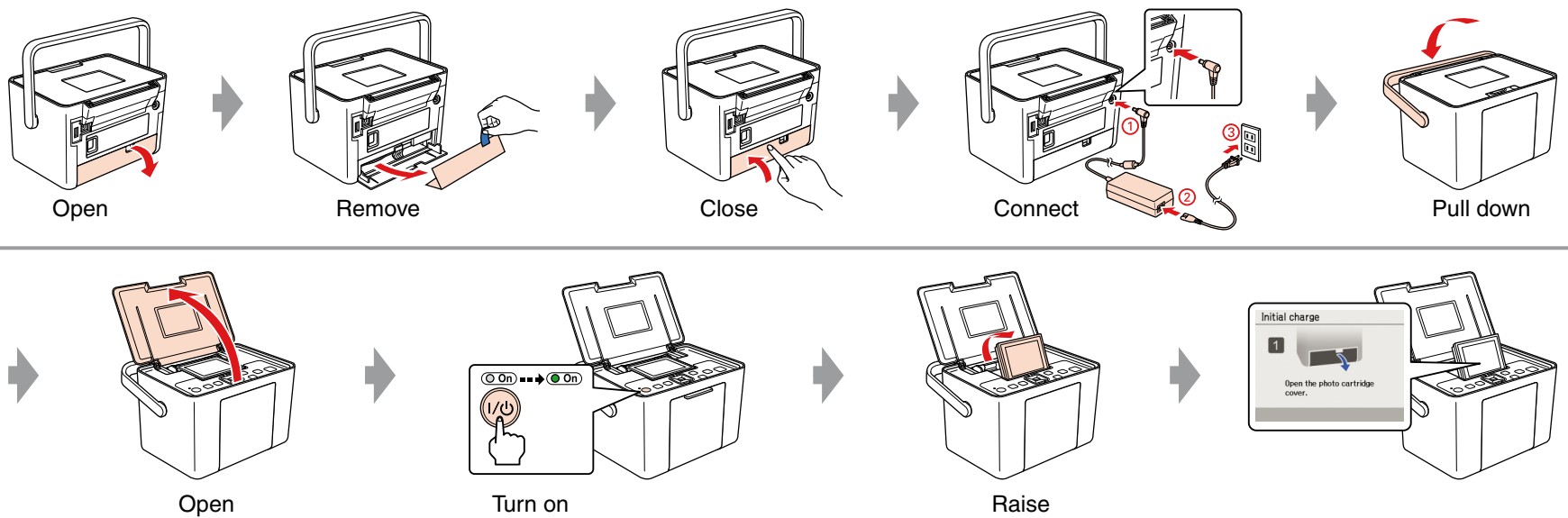


PictureMate™ **PM 270**

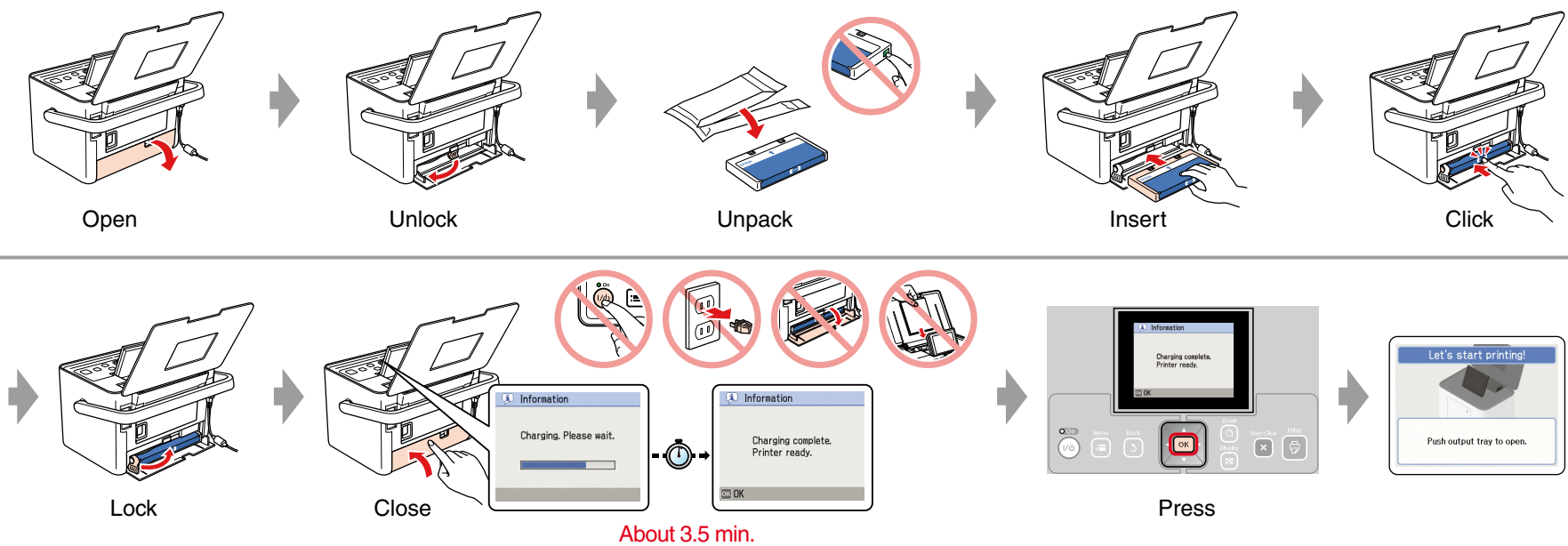
1. Unpacking



2. Turning On the Printer



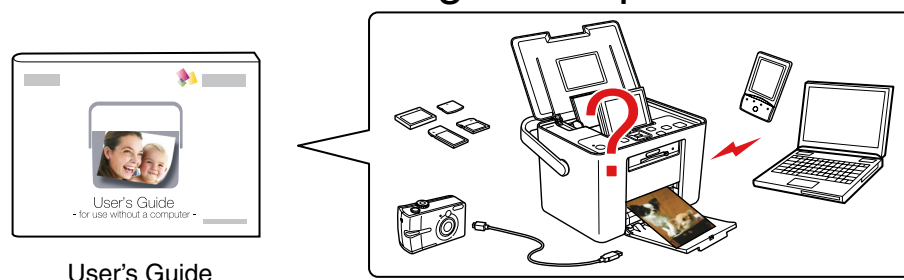
3. Installing the Photo Cartridge

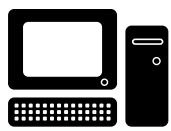


Note:

The photo cartridge first installed in your printer will be partly used to charge the print head. This cartridge prints fewer pages compared to subsequent photo cartridges.

4. Getting More Information Without Using a Computer

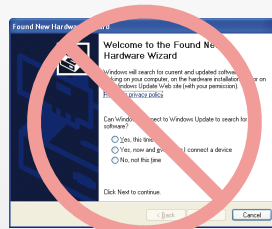
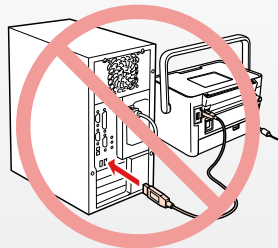




For Computer Users

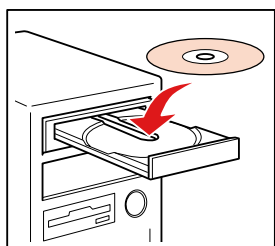
Installing the software

Do not connect the USB cable until you are instructed to do so.



If this screen appears, click **Cancel**.

For Windows Vista, XP, 2000, and Mac OS X



Insert

For Windows

For Mac OS X



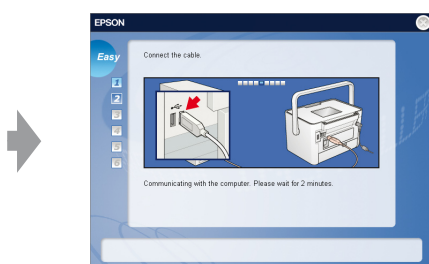
Double-click



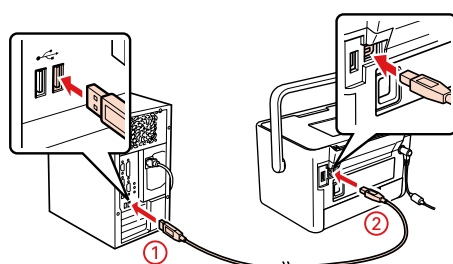
Click

Follow the instructions

- ☐ For Windows. No installation screen?
- ➔ Double-click the CD-ROM icon

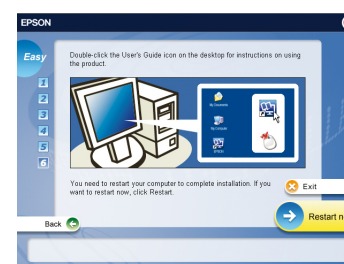


When this screen appears, connect to your PC.



Connect

Follow the instructions

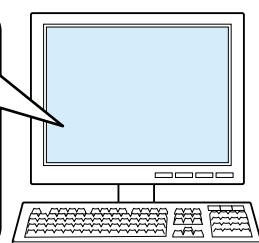


Installation complete.

For information on using the printer with a computer, see the online User's Guide.



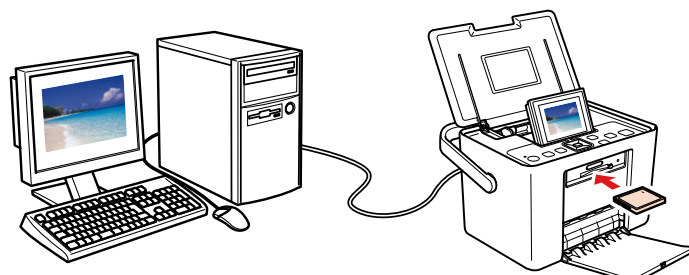
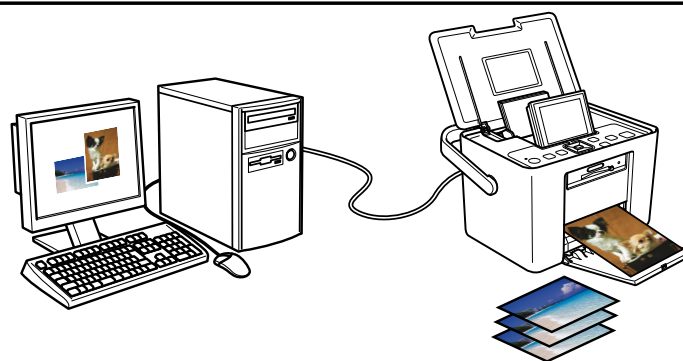
Double-click



User's Guide



Easy Photo Print



Attach To Email

