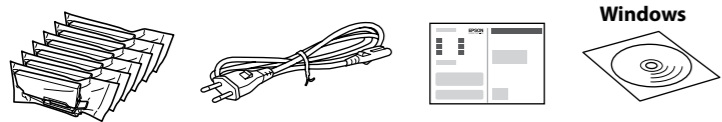


Start Here



© 2014 Seiko Epson Corporation.
All rights reserved.
Printed in XXXXXX

1



For Australia and New Zealand Users

Contents may vary by location.

Do not open the ink cartridge package until you are ready to install it in the printer. The cartridge is vacuum packed to maintain its reliability.

Do not connect a USB cable unless instructed to do so.

⚠ Caution; must be followed carefully to avoid bodily injury.

2

Windows

If the Firewall alert appears, allow access for Epson applications.

Windows (No CD/DVD drive) Mac OS X

➔ <http://epson.sn>

Visit the website to start the setup process, install software, and configure network settings.

iOS / Android

➔

Visit the website to install Epson iPrint application, start the setup process, and configure network settings.

<http://ipr.to/a>

Fax

For information on setting up the fax features, see the *User's Guide*.

For Australia and New Zealand Users

- Make sure you connect the noise filter as shown.
- Do not use this filter for any other products.

Epson Connect

➔ <https://www.epsonconnect.com/>

Using your mobile device, you can print from any location worldwide to your Epson Connect compatible printer. Visit the website for more information.

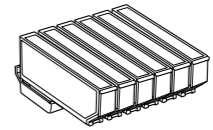
Questions?



You can open the *User's Guide* (PDF) and *Network Guide* (PDF) from the shortcut icon, or download the latest versions from the following website.

➔ <http://support.epson.net/>

Ink Cartridge Code



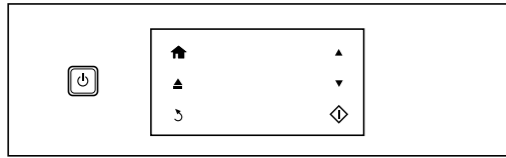
BK	C	LC	M	LM	Y
Black	Cyan	Light Cyan	Magenta	Light Magenta	Yellow
277	277	277	277	277	277
277XL	277XL	277XL	277XL	277XL	277XL

Not all cartridges are available in all regions.



Basic Operations

Guide to Control Panel



Except for the power button, available buttons are displayed on the printer's screen.

Turns the printer on or off. Displays the home screen.

Pulls out or close the output tray.

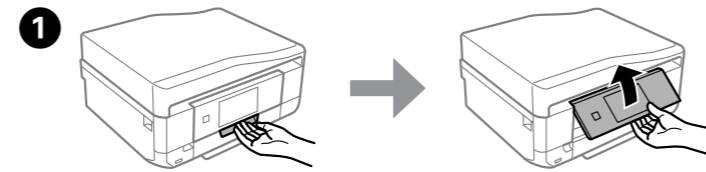
Scrolls the screen. You can also scroll the screen by flicking it.



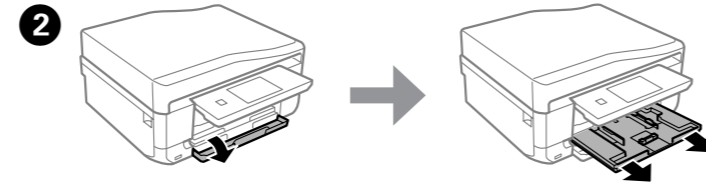
Starts the operation you selected.

Cancels/returns to the previous menu.

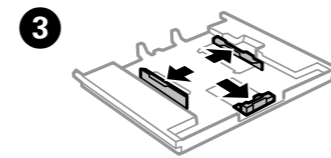
Loading Paper



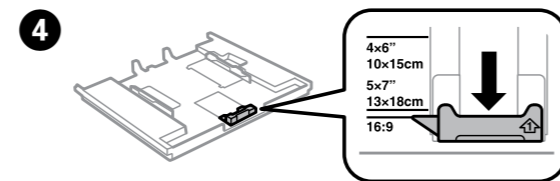
1 Raise the panel.



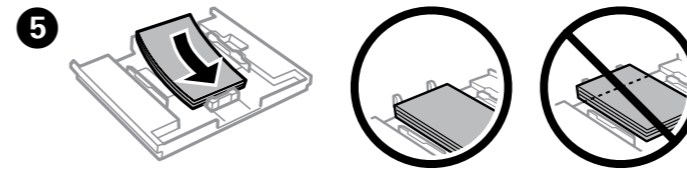
2 Open the front cover and pull out the paper cassette 1 (upper one).



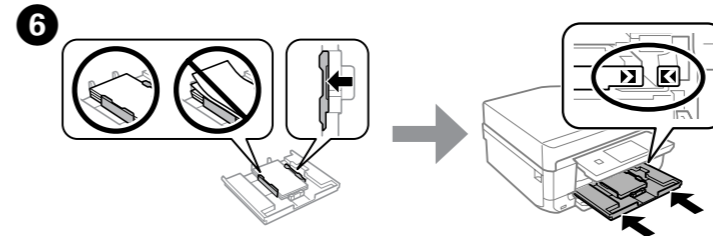
3 Slide the edge guides to the sides of the paper cassette.



4 Slide the edge guide to adjust to the paper size you will use.



5 Load paper toward the edge guide with printable side face-down, and check that the paper is not sticking out from the end of the cassette.

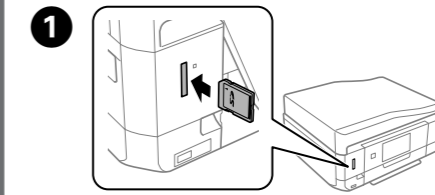


6 Slide the edge guides to the edges of the paper. Keep the cassette flat and insert it back into the printer carefully and slowly.

7 The paper setup screen is displayed on the LCD screen. Select the paper size and paper type you loaded in the printer.

The output tray is automatically ejected. When you finished printing, press the up arrow button to close the tray.

Printing Photos



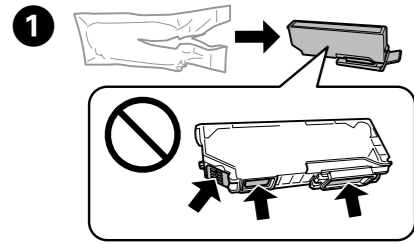
1 Insert a memory card and enter the **Print Photos** mode from the home screen.

2 Select a photo and press + or - to set the number of copies.

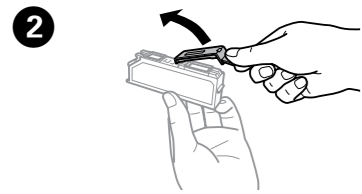
3 Press Settings and make the print settings. Scroll down if necessary.

4 Press the diamond button to start printing.

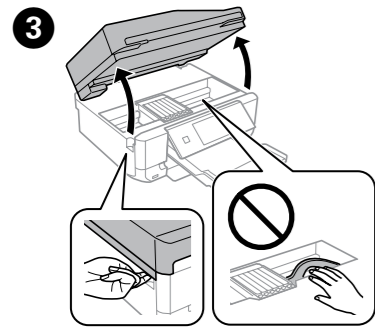
Replacing Ink Cartridges



Prepare new ink cartridge(s). Remove the ink cartridge from its package.




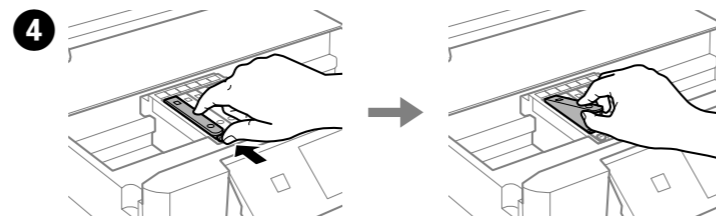
Remove the cap from the new cartridge.



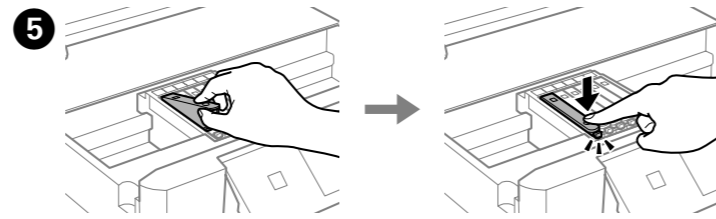
Open the scanner unit.

 Never touch the ink cartridges while the print head is moving.

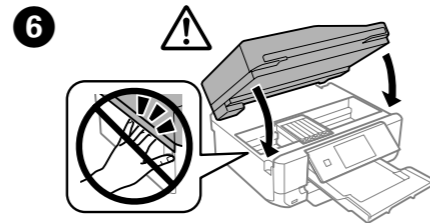
 If the ink cartridge holder does not move to the ink cartridge replacement position, close the scanner unit and select **Setup > Maintenance > Ink Cartridge(s) Replacement**.



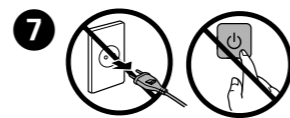
Push the tab to unlock the ink cartridge holder and then remove the cartridge diagonally.



Insert the ink cartridge diagonally into the cartridge holder and gently push it down until it clicks into place.



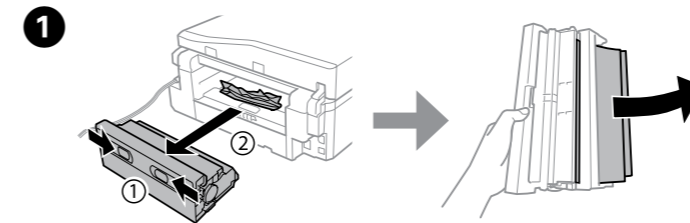
Close the scanner unit and follow the on-screen instruction.



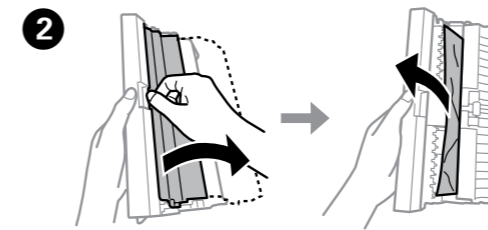
Wait until a completion message is displayed.

Clearing the paper jam

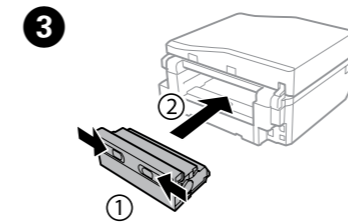
From the rear cover



Pull out the rear cover and carefully remove the jammed paper.

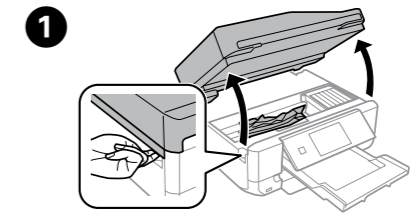


Open the rear cover and carefully remove the jammed paper.

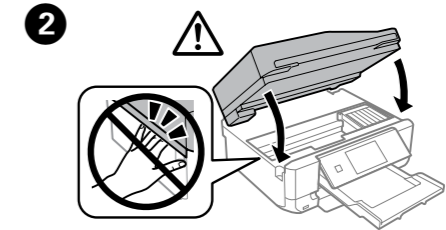


Reattach the rear cover.

From inside the printer



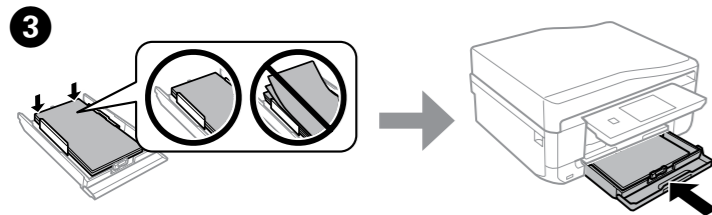
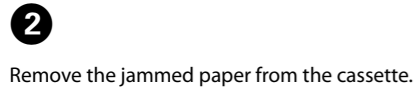
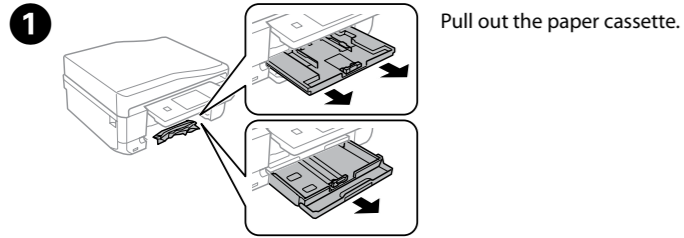
Open the scanner unit and remove all of the paper inside, including any torn pieces.



Close the scanner unit.



From the paper cassette



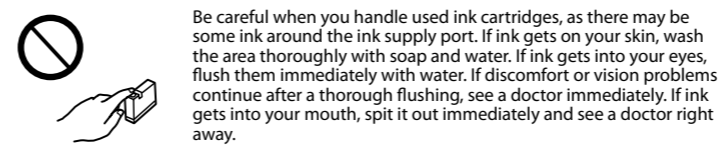
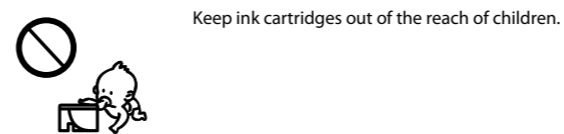
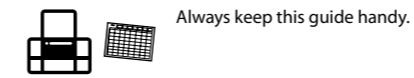
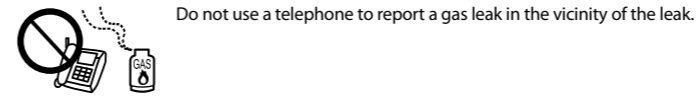
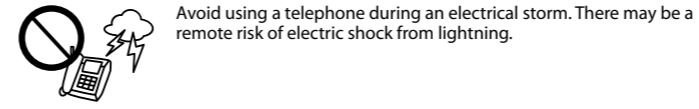
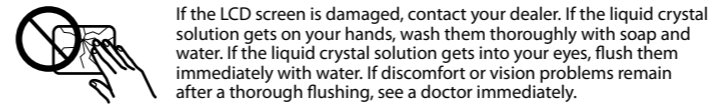
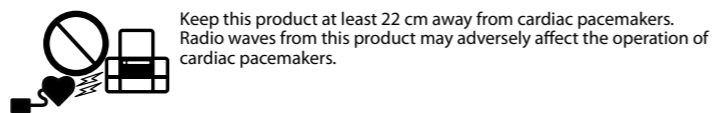
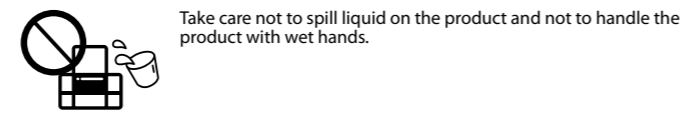
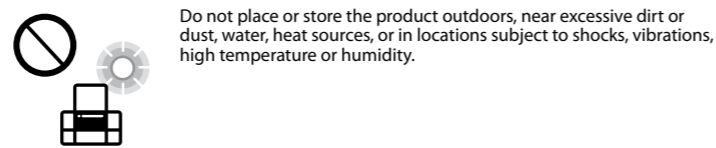
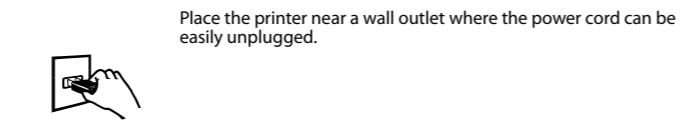
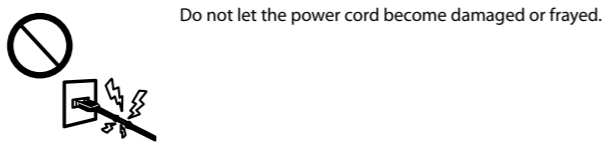
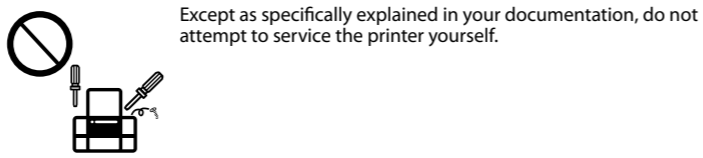
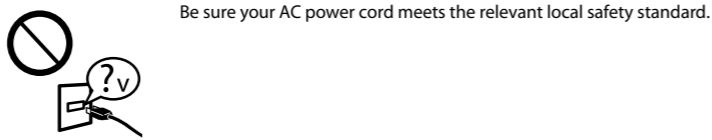
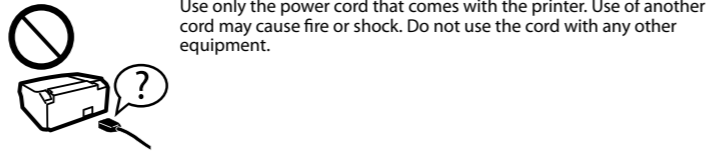
Align the edges of the paper. Keep the cassette flat and insert it back into the printer carefully and slowly.

Print Quality Help

Print a nozzle check pattern. Select **Setup > Maintenance > Nozzle Check**. If the pattern looks like "b", perform Print Head Cleaning.



Safety Instructions



For New Zealand Users

General warning

The grant of a Telepermit for any item of terminal equipment indicates only that Telecom has accepted that the item complies with the minimum conditions for connection to its network. It indicates no endorsement of the product by Telecom, nor does it provide any sort of warranty. Above all, it provides no assurance that any item will work correctly in all respects with another item of Telepermitted equipment of a different make or model, nor does it imply that any product is compatible with all of Telecom's network services.

Telepermitted equipment only may be connected to the EXT telephone port. This port is not specifically designed for 3-wire-connected equipment. 3-wire-connected equipment might not respond to incoming ringing when attached to this port.

The automatic calling functions of this equipment must not be used to cause a nuisance to other Telecom customers.

Windows® is a registered trademark of the Microsoft Corporation.

Mac OS is a trademark of Apple Inc., registered in the U.S. and other countries.

Android™ is a registered trademark of Google Inc.

The contents of this manual and the specifications of this product are subject to change without notice.

