

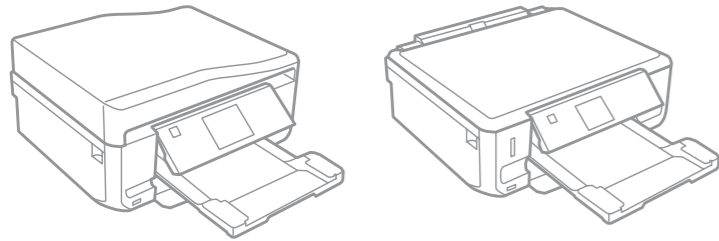
XP-610
XP-710

EPSON
EXCEED YOUR VISION

Start Here



© 2013 Seiko Epson Corporation.
All rights reserved.
Printed in XXXXXX



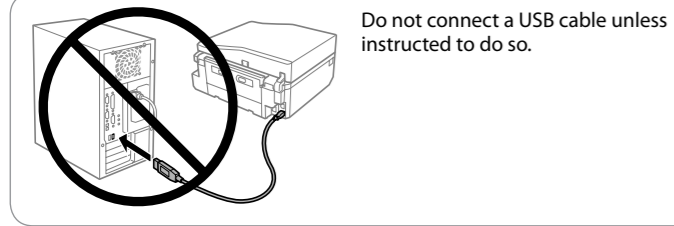
⚠ Caution; must be followed carefully to avoid bodily injury.

1



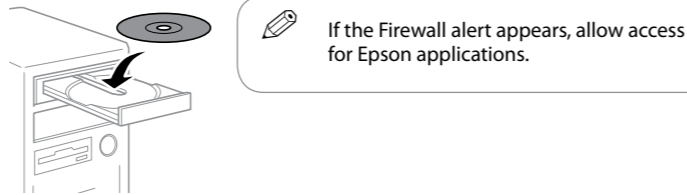
Contents may vary by location.

Do not open the ink cartridge package until you are ready to install it in the product. The cartridge is vacuum packed to maintain its reliability.



Do not connect a USB cable unless instructed to do so.

2 Windows

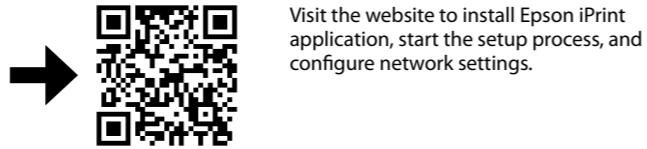


No CD/DVD drive / Mac OS X

➔ <http://support.epson.net/setupnavi/>

Visit the website to start the setup process, install software, and configure network settings.

iOS / Android



➔ <http://ipr.to/a>

Epson Connect



Using your mobile device, you can print from any location worldwide to your Epson Connect compatible product. Visit the website for more information.

Questions?

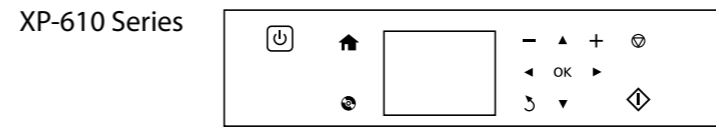
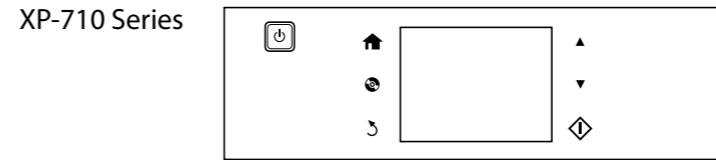


You can open the *User's Guide* (PDF) and *Network Guide* (PDF) from the shortcut icon, or download the latest versions from the following website.

➔ <http://support.epson.net/>

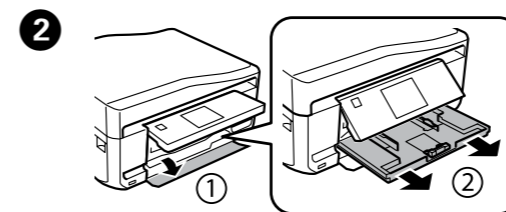
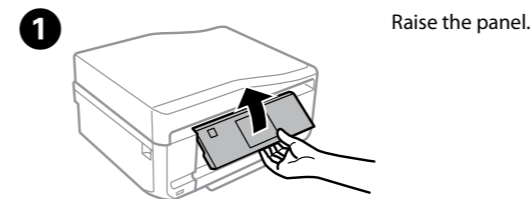
Basic Operations

Guide to Control Panel

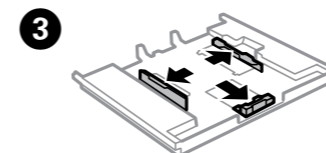


- Turns the product on or off.
- Displays the Home menu.
- Displays the CD/DVD label menu. The product prepares CD/DVD label printing.
- Scrolls the screen. You can also scroll the screen by flicking it. (XP-710 Series only.)
- Starts the operation you selected.
- Cancels/returns to the previous menu.
- Sets the number of copies and prints.
- Press , , , to select menus. Press OK to confirm the setting you have selected and go to next screen.
- Stops the ongoing operation or initialize the current settings.

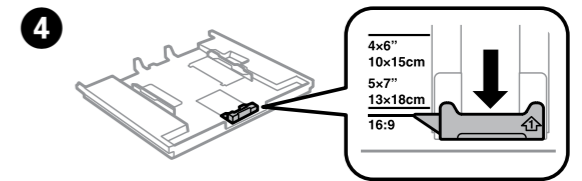
Loading Paper



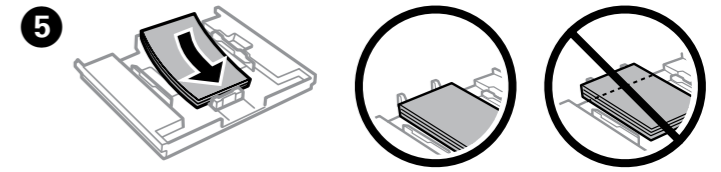
Open the front cover and pull out the paper cassette 1 (upper one).



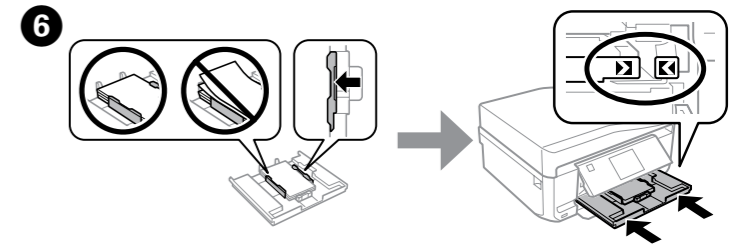
Slide the edge guides to the sides of the paper cassette.



Slide the edge guide to adjust to the paper size you will use.

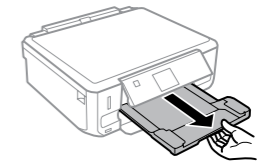


Load paper toward the edge guide with printable side face-down, and check that the paper is not sticking out from the end of the cassette.



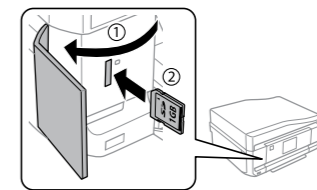
Slide the edge guides to the edges of the paper. Keep the cassette flat and insert it back into the product carefully and slowly.

✎ XP-710 Series: The output tray is automatically ejected. When you finished printing, close the tray manually.
XP-610 Series: You need to pull out and close the output tray manually.

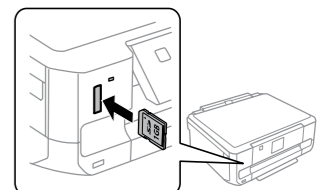


Printing Photos

1
XP-710 Series



XP-610 Series

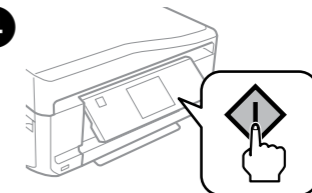


Insert a memory card and enter the **Print Photos** mode from the Home menu.

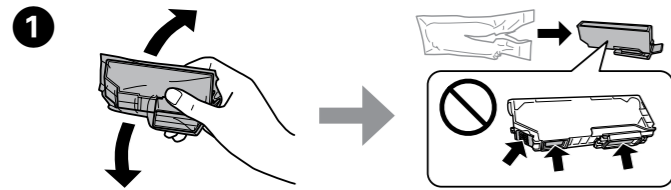
2 Select a photo and press + or - to set the number of copies.

3 Press Settings or , and then make the print settings. Scroll down if necessary.

4 Press to start printing.

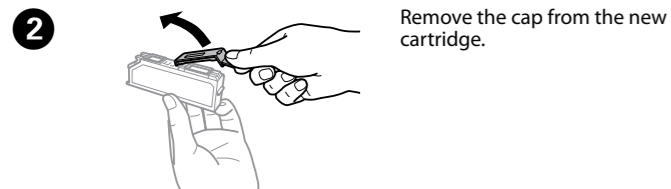


Replacing Ink Cartridges

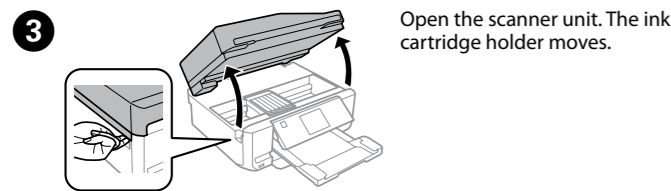


Prepare new ink cartridge(s). For best results, gently shake only the new Black ink cartridge four or five times and then unpack.

You do not need to shake the color ink cartridges and the Photo Black ink cartridge.

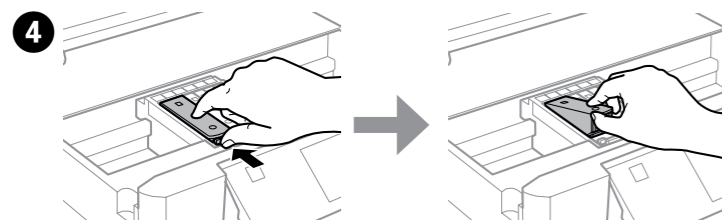


Remove the cap from the new cartridge.

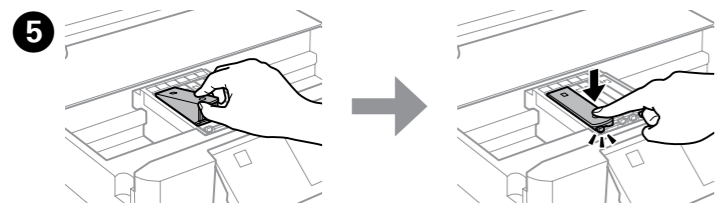


Open the scanner unit. The ink cartridge holder moves.

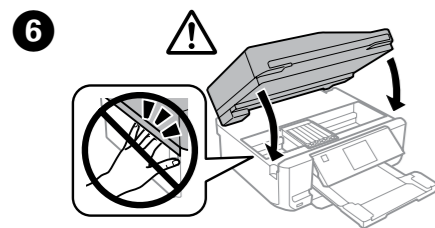
If the ink cartridge holder does not move to the ink cartridge replacement position, close the scanner unit and select **Home > Setup > Maintenance > Ink Cartridge(s) Replacement**.



Push the tab to unlock the ink cartridge holder and then remove the cartridge diagonally.



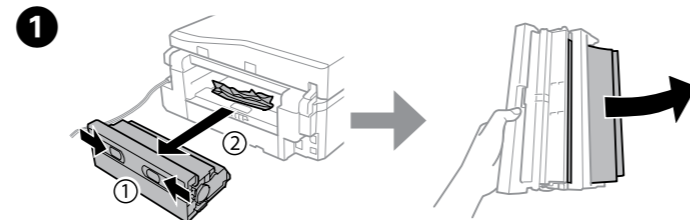
Insert the ink cartridge diagonally into the cartridge holder and gently push it down until it clicks into place.



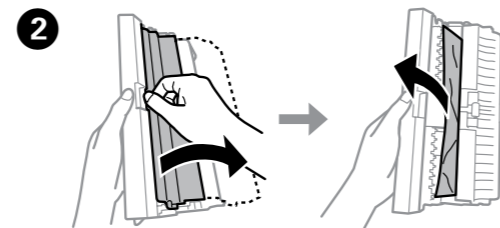
Close the scanner unit and follow the on-screen instruction.

Clearing the paper jam

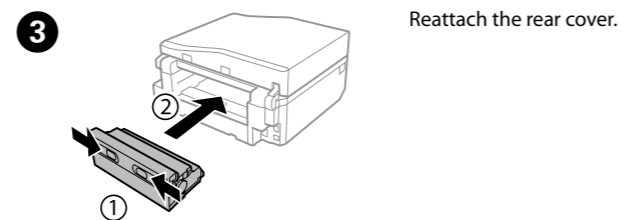
From the rear cover



Pull out the rear cover and carefully remove the jammed paper.

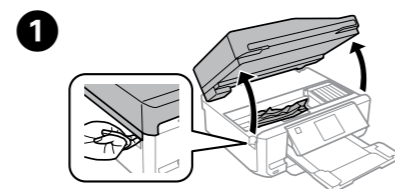


Open the rear cover and carefully remove the jammed paper.

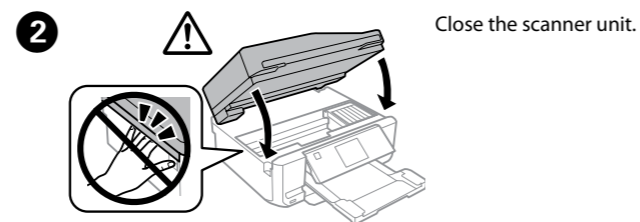


Reattach the rear cover.

From inside the product

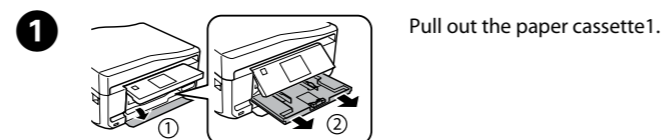


Open the scanner unit and remove all of the paper inside, including any torn pieces.

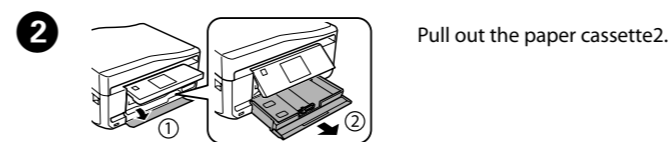


Close the scanner unit.

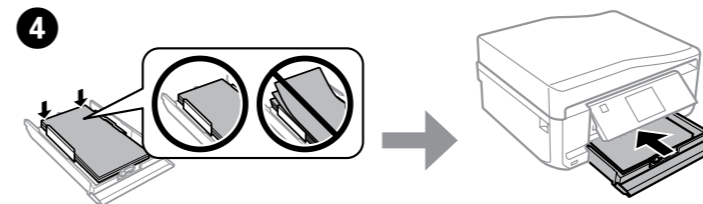
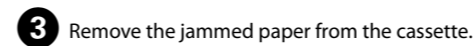
From the paper cassette



Pull out the paper cassette1.



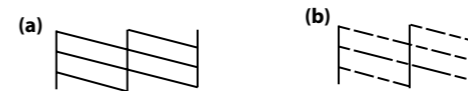
Pull out the paper cassette2.



Align the edges of the paper. Keep the cassette flat and insert it back into the product carefully and slowly.

Print Quality Help

Print a nozzle check pattern. Select **Setup > Maintenance > Nozzle Check**. If the pattern looks like "b", perform Print Head Cleaning.



Safety Instructions

Use only the power cord that comes with the printer. Use of another cord may cause fire or shock. Do not use the cord with any other equipment.

Be sure your AC power cord meets the relevant local safety standard.

Except as specifically explained in your documentation, do not attempt to service the printer yourself.

Do not let the power cord become damaged or frayed.

Place the printer near a wall outlet where the power cord can be easily unplugged.

Do not place or store the product outdoors, near excessive dirt or dust, water, heat sources, or in locations subject to shocks, vibrations, high temperature or humidity.

Take care not to spill liquid on the product and not to handle the product with wet hands.

Keep this product at least 22 cm away from cardiac pacemakers. Radio waves from this product may adversely affect the operation of cardiac pacemakers.

If the LCD screen is damaged, contact your dealer. If the liquid crystal solution gets on your hands, wash them thoroughly with soap and water. If the liquid crystal solution gets into your eyes, flush them immediately with water. If discomfort or vision problems remain after a thorough flushing, see a doctor immediately.

Keep ink cartridges out of the reach of children.

Be careful when you handle used ink cartridges, as there may be some ink around the ink supply port. If ink gets on your skin, wash the area thoroughly with soap and water. If ink gets into your eyes, flush them immediately with water. If discomfort or vision problems continue after a thorough flushing, see a doctor immediately. If ink gets into your mouth, spit it out immediately and see a doctor right away.

Ink Cartridge Code

BK	PBK	C	M	Y
Black	Photo Black	Cyan	Magenta	Yellow
273, 273XL				

Not all cartridges are available in all regions.

Windows® is a registered trademark of the Microsoft Corporation.

Mac OS is a trademark of Apple Inc., registered in the U.S. and other countries.

Android™ is a registered trademark of Google Inc.

The contents of this manual and the specifications of this product are subject to change without notice.