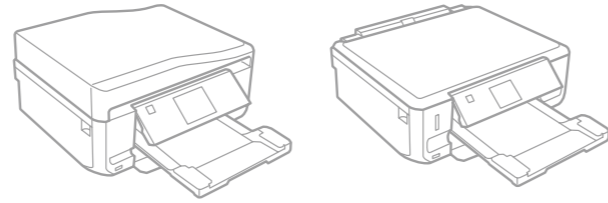


XP-600 Series  
XP-700 Series  
XP-800 Series

**EPSON**  
EXCEED YOUR VISION

**EN Start Here**

**TC 安裝說明**



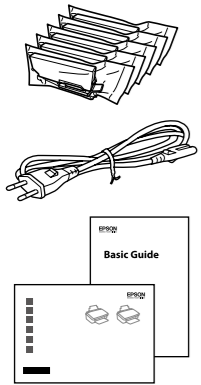
**Caution; must be followed carefully to avoid bodily injury.**  
注意：務必遵守注意說明，避免造成人身傷害。



© 2012 Seiko Epson Corporation. All rights reserved.  
Printed in XXXXXX



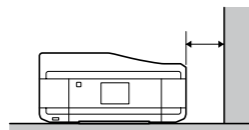
Check the accessories. Contents may vary by location.  
檢查配件。內容物會因國家/地區而不同。



**For the initial setup, make sure you use the ink cartridges that came with this product. These cartridges cannot be saved for later use. Do not open the ink cartridge package until you are ready to install it in the product. The cartridge is vacuum packed to maintain its reliability.**  
初次安裝時，務必使用本印表機隨附的墨水匣。這些墨水匣無法保存供日後使用。若不安裝至印表機，請勿拆開墨水匣的包裝。為了維持墨水匣列印穩定性，墨水匣是以真空包裝的。

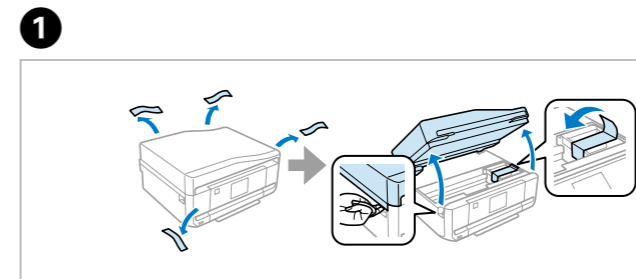
**XP-800 Series**

Place the product with its right side at least 10 cm away from the wall or any other objects.  
將本產品放置妥當，使右側與牆壁或其他物體至少保持 10 公分的距離。

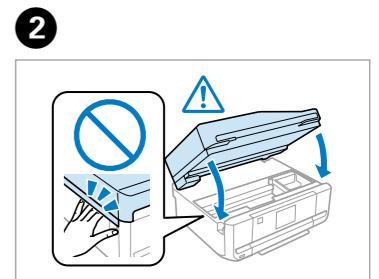


The illustrations and the screen displays in this guide may differ from your actual product.  
本使用說明中的圖例及畫面可能不同於實際產品。

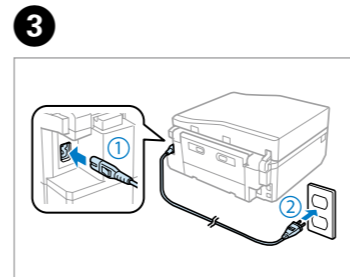
**Setting Up the Product**  
設定產品



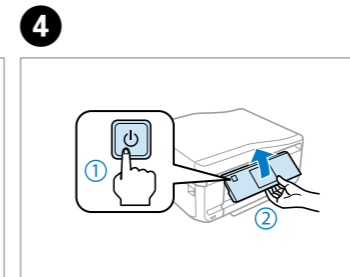
**1** Remove all protective materials.  
移除保護膠帶。



**2** Close.  
關上印表機上蓋。



**3** Connect and plug in.  
連接電源線並插入電源插座。

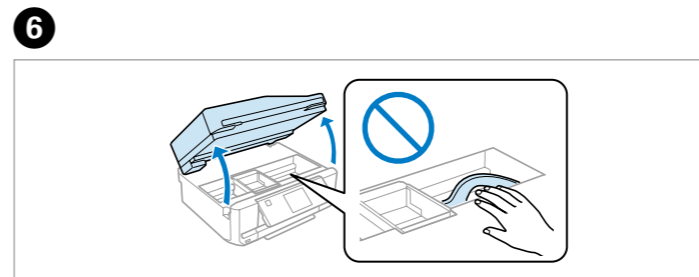


**4** Turn on and raise manually.  
手動開啓電源並抬高面板。

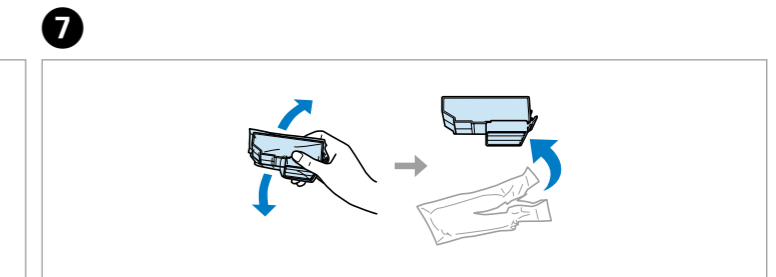


**5** Scroll down to select a language.  
向下捲動以選擇語言。

Fax users also require country/region and date/time settings.  
傳真使用者還需要進行國家/地區與日期/時間設定。



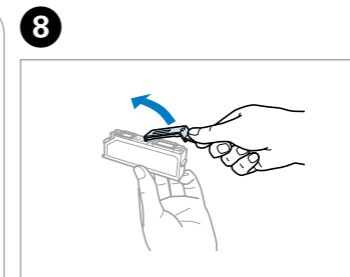
**6** When instructed to install the cartridges, open the upper section.  
當提示您安裝墨水匣時，請打開掃描單元。



**7** Shake only BLACK cartridge. Do not shake Photo Black or other color cartridges.  
僅搖晃新的黑色墨水匣。請勿搖晃相片黑或其他彩色墨水匣。



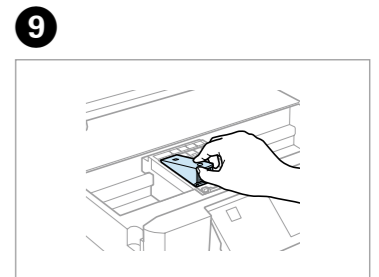
**8** Do not touch the portions.  
請勿碰觸部件。



Remove the cap.  
拔下護蓋。

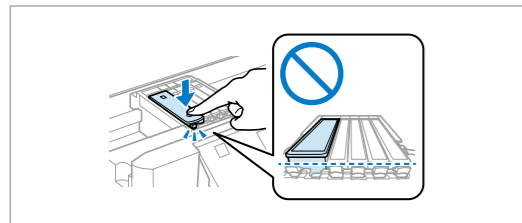


Store ink caps in the plastic bag.  
將墨水匣護蓋放入塑膠袋。



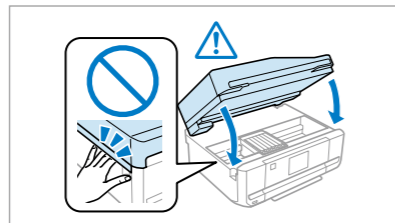
**9** Install the ink cartridges head first.  
先安裝墨水匣前端。

10



Press each one until it clicks.  
逐一安裝墨水匣，直到卡入為止。

11



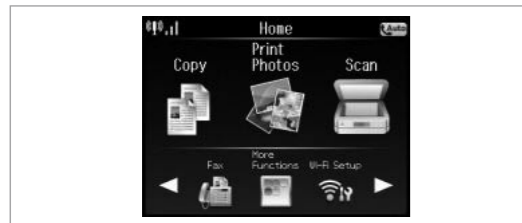
Close. Ink charging begins.  
關上印表機上蓋。即開始墨水設定。

12



Wait until a completion message is displayed.  
等待顯示完成訊息。

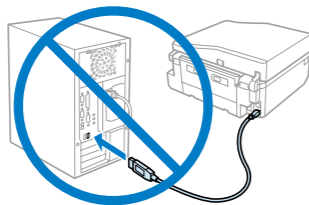
13



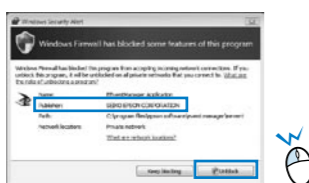
Now install CD and follow the instructions.  
現在放入光碟並依照指示操作。

The initial ink cartridges will be partly used to charge the print head. These cartridges may print fewer pages compared to subsequent ink cartridges.  
內附的墨水匣，其中有部分墨水會用在印字頭墨水設定上。這些墨水匣的列印頁數可能少於其後安裝的墨水匣。

### Connecting to the Computer 將印表機連接至電腦

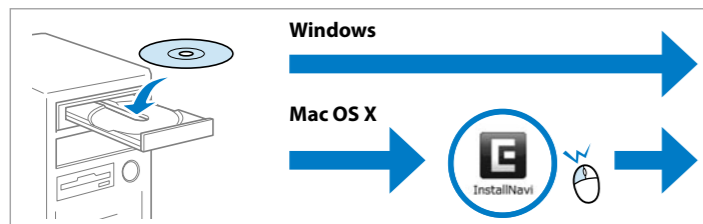


Do not connect the USB cable until you are instructed to do so.  
在出現提示前，請勿連接 USB 連接線。



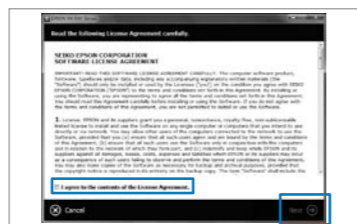
If the Firewall alert appears, allow access for Epson applications.  
若出現「防火牆」警示訊息，請確認發行者為 Epson，然後才開啓 Epson 應用程式。

1



Insert.  
放入軟體光碟片。

2



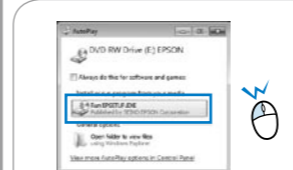
Check and proceed.  
檢視內容並繼續操作。

Windows **A**  
Mac **B**

### A Windows



Select and follow the instructions.  
請點選並依照指示操作。



Windows 7/Vista: AutoPlay window.  
Windows 7/Vista：自動播放視窗。

### B Mac



Select and follow the instructions.  
請點選並依照指示操作。

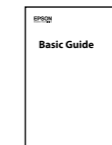
Only the software with a selected check box is installed. **Epson Online Guides** contain important information such as troubleshooting and error indications. Install them if necessary.  
僅安裝有點選檢查盒的軟體。**Epson 線上進階使用說明**包含解決問題的方法等重要資訊。請視需要安裝。

Your product supports the Epson Connect service. This service allows you to print from anywhere to your Epson product.  
您購買的印表機支援 Epson Connect 服務。這項服務允許您從任何地方列印至您的 Epson 印表機。

<https://www.epsonconnect.com/>



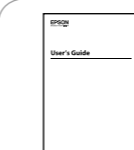
### Getting More Information 取得更多的資訊



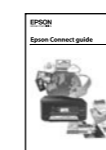
See the booklet for basic information.  
請參考使用說明的基本資訊。



You can see the online manuals. See the *User's Guide* for detailed information.  
您可查看線上手冊。詳細資訊請參考進階使用說明。



*User's Guide* (PDF file)  
進階使用說明 (PDF 檔)

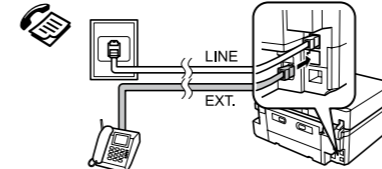


*Epson Connect guide* (PDF file)  
*Epson Connect* 使用說明 (PDF 檔案)



*Network Guide* (HTML file)  
網路使用說明 (HTML 檔)

### FAX



Fax users: For information on connecting a phone cable for sending or receiving faxes, see the fax section of the *Basic Guide*.  
傳真使用者：有關連接電話線以傳送或接收傳真的詳細資訊，請參考簡易使用手冊的傳真章節。