

# XP-520

# EPSON

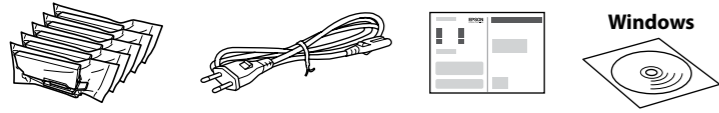
EXCEED YOUR VISION

## Start Here



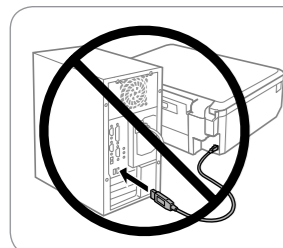
© 2014 Seiko Epson Corporation.  
All rights reserved.  
Printed in XXXXXX

### 1



Contents may vary by location.

Do not open the ink cartridge package until you are ready to install it in the printer. The cartridge is vacuum packed to maintain its reliability.

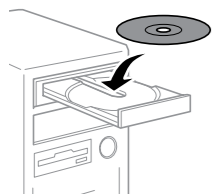


Do not connect a USB cable unless instructed to do so.

Caution; must be followed carefully to avoid bodily injury.

### 2

Windows



If the Firewall alert appears, allow access for Epson applications.

Windows (No CD/DVD drive)  
Mac OS X

➔ <http://epson.sn>

Visit the website to start the setup process, install software, and configure network settings.

iOS / Android



Visit the website to install Epson iPrint application, start the setup process, and configure network settings.

## Epson Connect



Using your mobile device, you can print from any location worldwide to your Epson Connect compatible printer. Visit the website for more information.

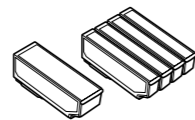
## Questions?



You can open the *User's Guide* (PDF) and *Network Guide* (PDF) from the shortcut icon, or download the latest versions from the following website.

➔ <http://support.epson.net/>

## Ink Cartridge Code

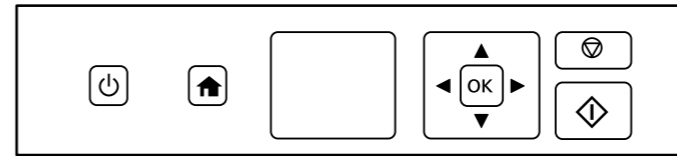


BK	PBK	C	M	Y
Black	Photo Black	Cyan	Magenta	Yellow
273	273	273	273	273
273XL	273XL	273XL	273XL	273XL

Not all cartridges are available in all regions.

## Basic Operations

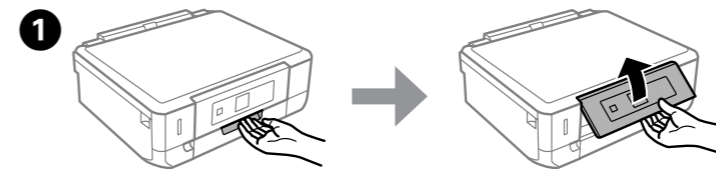
### Guide to Control Panel



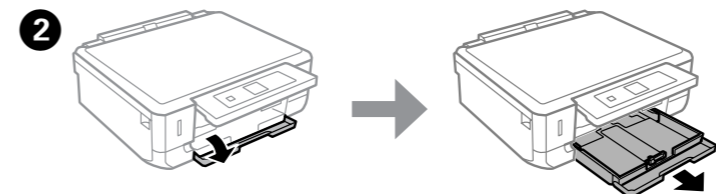
- Turns the printer on or off.
- Displays the home screen.
- Press to select menus. Press **OK** to confirm the setting you have selected and go to next screen.
- Starts the operation you selected.
- Stops the ongoing operation or initialize the current settings.

Icons that show the network status are displayed at the upper right on the LCD screen.

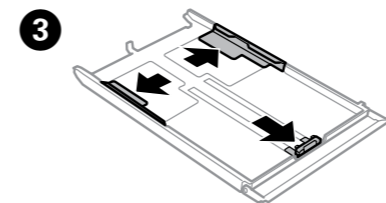
### Loading Paper



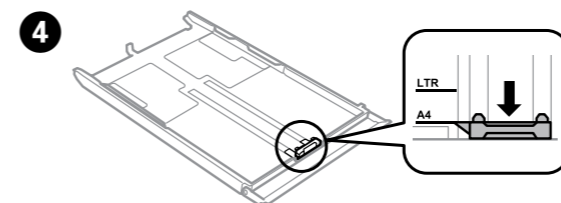
Raise the panel.



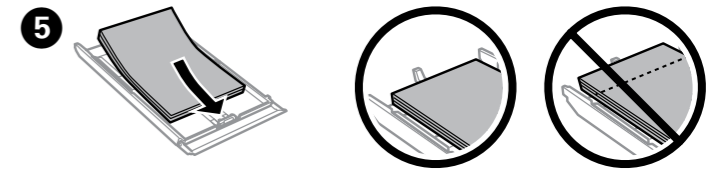
Open the front cover and pull out the paper cassette.



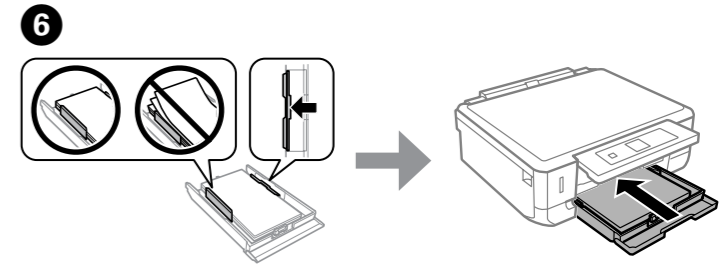
Slide the edge guides to the sides of the paper cassette.



Slide the edge guide to adjust to the paper size you will use.

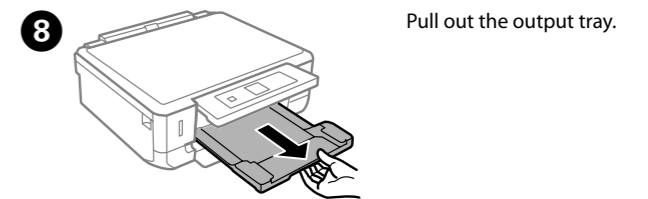


Load paper toward the edge guide with printable side face-down, and check that the paper is not sticking out from the end of the cassette.

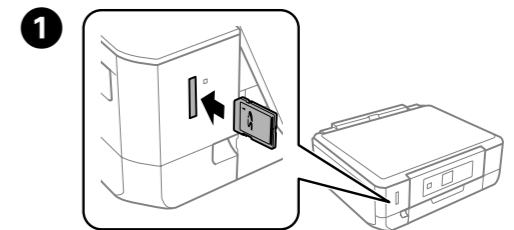


Slide the edge guides to the edges of the paper. Keep the cassette flat and insert it back into the printer carefully and slowly.

The paper setup screen is displayed on the LCD screen. Select the paper size and paper type you loaded in the printer.



### Printing Photos

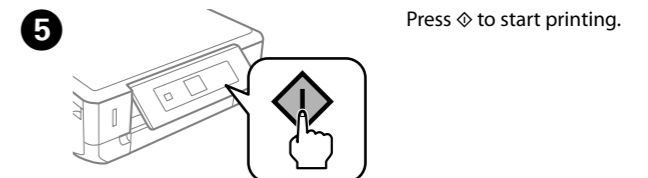


Insert a memory card and enter the **Print Photos** mode from the home screen.

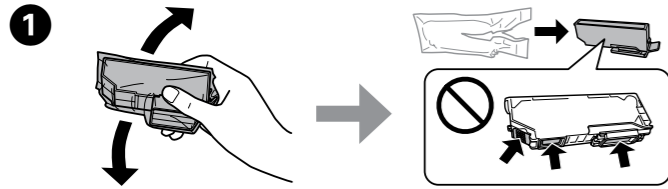
Use or to select **Select Photos**, and press **OK**.

Use or to select a photo, and use or to set the number of copies.

Press **OK** to display the print settings, and then press to check or change the settings.

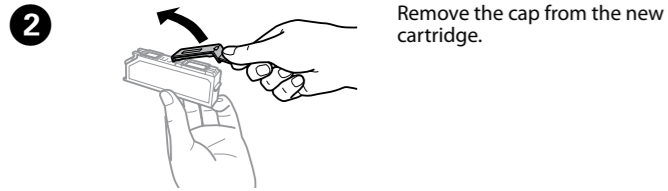


## Replacing Ink Cartridges

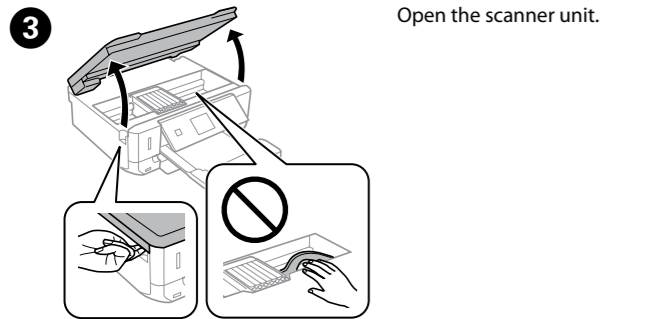


Prepare new ink cartridge(s). For best results, gently shake only the new Black ink cartridge four or five times and then unpack.

You do not need to shake the color ink cartridges and the Photo Black ink cartridge.



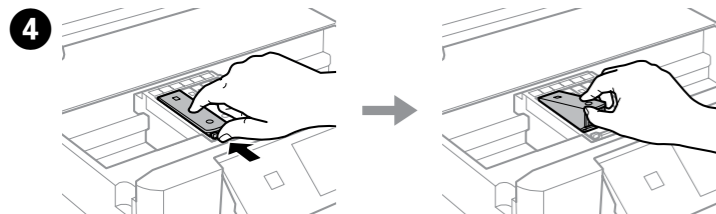
Remove the cap from the new cartridge.



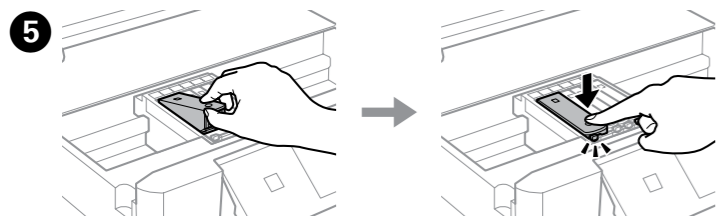
Open the scanner unit.

Never touch the ink cartridges while the print head is moving.

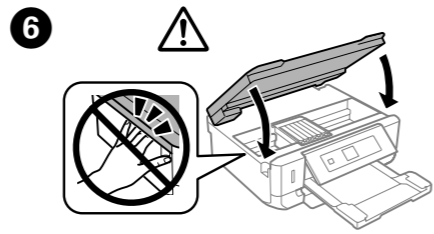
If the ink cartridge holder does not move to the ink cartridge replacement position, close the scanner unit and select **Setup > Maintenance > Ink Cartridge(s) Replacement**.



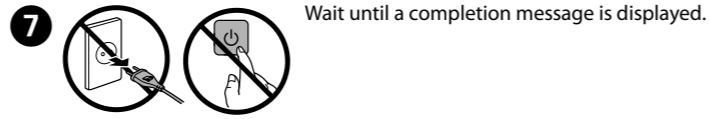
Push the tab to unlock the ink cartridge holder and then remove the cartridge diagonally.



Insert the ink cartridge diagonally into the cartridge holder and gently push it down until it clicks into place.



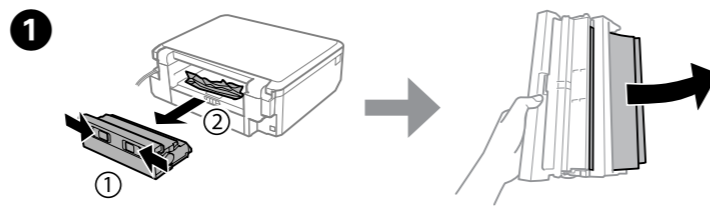
Close the scanner unit and follow the on-screen instruction.



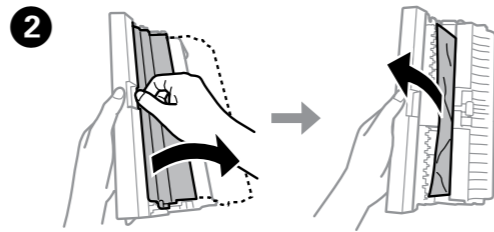
Wait until a completion message is displayed.

## Clearing the paper jam

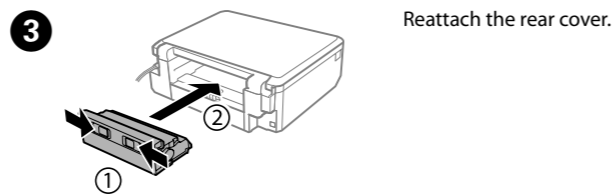
### From the rear cover



Pull out the rear cover and carefully remove the jammed paper.

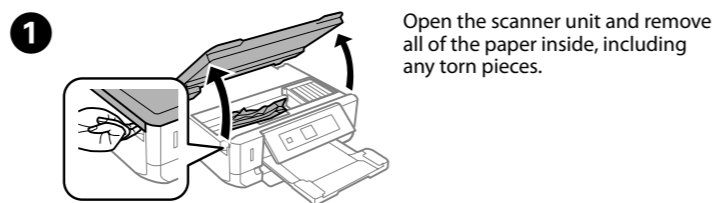


Open the rear cover and carefully remove the jammed paper.

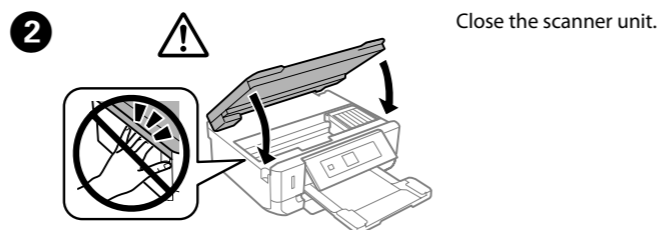


Reattach the rear cover.

### From inside the printer

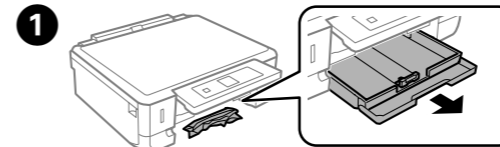


Open the scanner unit and remove all of the paper inside, including any torn pieces.

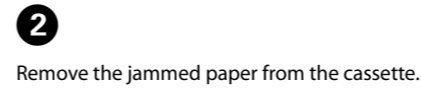


Close the scanner unit.

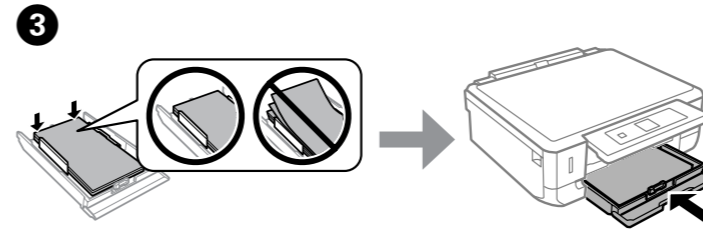
## From the paper cassette



Pull out the paper cassette.



Remove the jammed paper from the cassette.

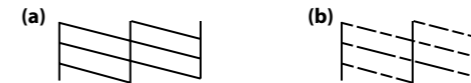


Align the edge guides to the edges of the paper. Keep the cassette flat and insert it back into the printer carefully and slowly.

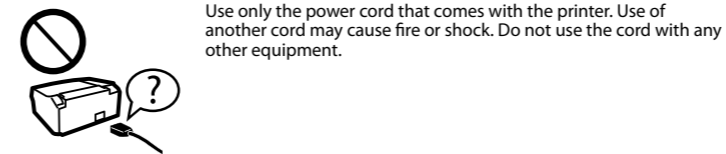
## Print Quality Help

If you see missing segments or broken lines in your printouts, try the following solutions.

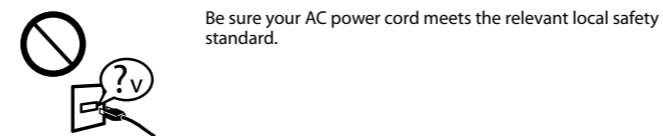
Print a nozzle check pattern. Select **Setup > Maintenance > Nozzle Check**. If the pattern looks like "b", perform Print Head Cleaning.



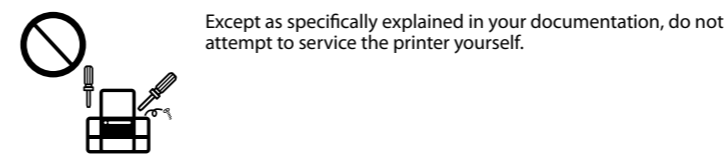
## Safety Instructions



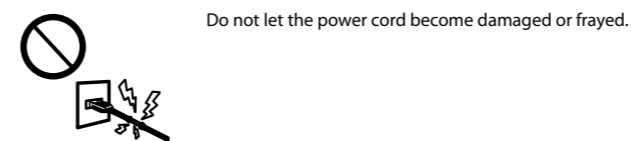
Use only the power cord that comes with the printer. Use of another cord may cause fire or shock. Do not use the cord with any other equipment.



Be sure your AC power cord meets the relevant local safety standard.



Except as specifically explained in your documentation, do not attempt to service the printer yourself.



Do not let the power cord become damaged or frayed.



Place the printer near a wall outlet where the power cord can be easily unplugged.



Do not place or store the product outdoors, near excessive dirt or dust, water, heat sources, or in locations subject to shocks, vibrations, high temperature or humidity.



Take care not to spill liquid on the product and not to handle the product with wet hands.



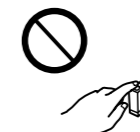
Keep this product at least 22 cm away from cardiac pacemakers. Radio waves from this product may adversely affect the operation of cardiac pacemakers.



If the LCD screen is damaged, contact your dealer. If the liquid crystal solution gets on your hands, wash them thoroughly with soap and water. If the liquid crystal solution gets into your eyes, flush them immediately with water. If discomfort or vision problems remain after a thorough flushing, see a doctor immediately.



Keep ink cartridges out of the reach of children.



Be careful when you handle used ink cartridges, as there may be some ink around the ink supply port. If ink gets on your skin, wash the area thoroughly with soap and water. If ink gets into your eyes, flush them immediately with water. If discomfort or vision problems continue after a thorough flushing, see a doctor immediately. If ink gets into your mouth, spit it out immediately and see a doctor right away.



Always keep this guide handy.

Windows® is a registered trademark of the Microsoft Corporation.

Mac OS is a trademark of Apple Inc., registered in the U.S. and other countries.

Android™ is a registered trademark of Google Inc.

The contents of this manual and the specifications of this product are subject to change without notice.

