

XP-220

Start Here

EPSON
EXCEED YOUR VISION



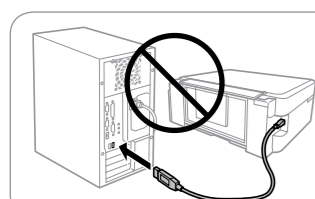
© 2015 Seiko Epson Corporation.
All rights reserved.
Printed in XXXXXX

1



Contents may vary by location.

Do not open the ink cartridge package until you are ready to install it in the printer. The cartridge is vacuum packed to maintain its reliability.

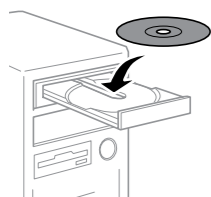


Do not connect a USB cable unless instructed to do so.

Caution; must be followed carefully to avoid bodily injury.

2

Windows



If the Firewall alert appears, allow access for Epson applications.

Windows (No CD/DVD drive) Mac OS X



<http://epson.sn>

Visit the website to start the setup process, install software, and configure network settings.

iOS / Android



<http://ipr.to/a>

Visit the website to install Epson iPrint application, start the setup process, and configure network settings.

Questions?



You can open the *User's Guide* (PDF) and *Network Guide* (PDF) from the shortcut icon, or download the latest versions from the following website.

<http://support.epson.net/>

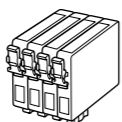
Epson Connect



<https://www.epsonconnect.com/>

Using your mobile device, you can print from any location worldwide to your Epson Connect compatible printer. Visit the website for more information.

Ink Cartridge Code



BK	C	M	Y
Black	Cyan	Magenta	Yellow
220	220	220	220
220XL	220XL	220XL	220XL

Not all cartridges are available in all regions.

Safety Instructions



Use only the power cord that comes with the printer. Use of another cord may cause fire or shock. Do not use the cord with any other equipment.



Be sure your AC power cord meets the relevant local safety standard.



Except as specifically explained in your documentation, do not attempt to service the printer yourself.



Do not let the power cord become damaged or frayed.



Place the printer near a wall outlet where the power cord can be easily unplugged.



Do not place or store the product outdoors, near excessive dirt or dust, water, heat sources, or in locations subject to shocks, vibrations, high temperature or humidity.



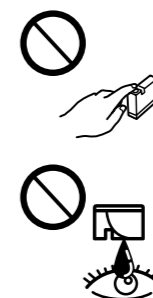
Take care not to spill liquid on the product and not to handle the product with wet hands.



Keep this product at least 22 cm away from cardiac pacemakers. Radio waves from this product may adversely affect the operation of cardiac pacemakers.



Keep ink cartridges out of the reach of children.



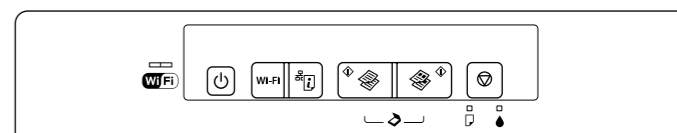
Be careful when you handle used ink cartridges, as there may be some ink around the ink supply port. If ink gets on your skin, wash the area thoroughly with soap and water. If ink gets into your eyes, flush them immediately with water. If discomfort or vision problems continue after a thorough flushing, see a doctor immediately. If ink gets into your mouth, spit it out immediately and see a doctor right away.



Always keep this guide handy.

Basic Operations

Guide to Control Panel



Turns the printer on or off.



Clears a network error. Hold down for more than three seconds to make network settings using the WPS button on a wireless router. See *Network Guide*.



Prints a network status sheet.



Starts monochrome or color copy. Press both buttons simultaneously to scan your original and save it as PDF on your PC. (USB connection only)



Stops the current operation. Press this to replace an ink cartridge when an ink cartridge is expended.



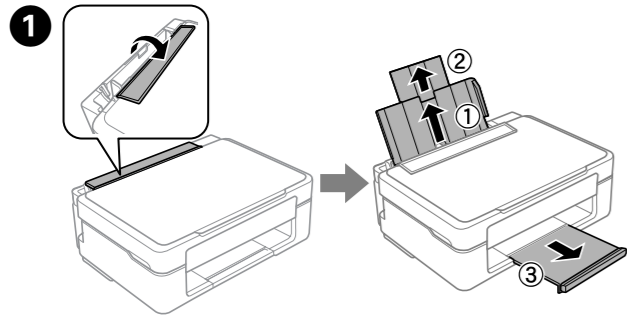
Turns on or flashes to indicate a paper-related error.



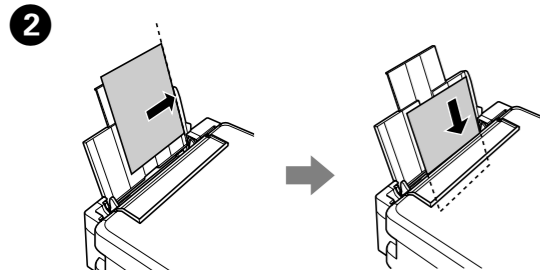
Turns on when an ink cartridge is expended, invalid, or not installed correctly. Flashes when an ink cartridge is running low on ink. Printing is still possible. Leave an expended or low-ink-level cartridge installed until you have obtained a replacement. Otherwise, the ink remaining in the print head nozzles may dry out. In addition, ink cartridges with a low ink level cannot be used even if they are reinserted into the printer. See the "Replacing the Ink Cartridges" section.

Loading Paper

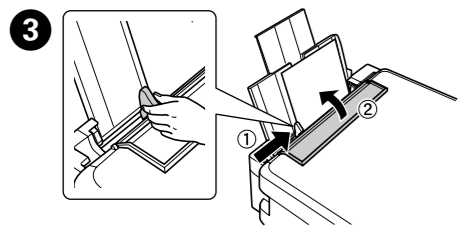
Do not load paper above the ▼ mark inside the edge guide.



Flip the feeder guard, and then slide out the paper support and the output tray.

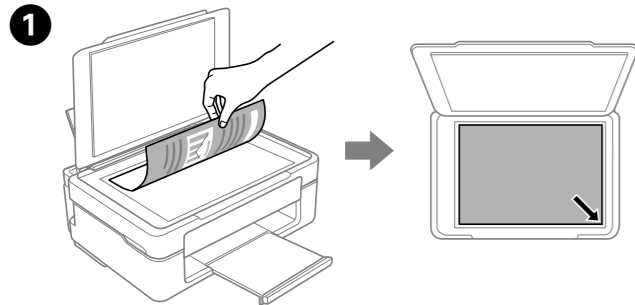


Load paper with the printable side face-up against the right side of the sheet feeder.

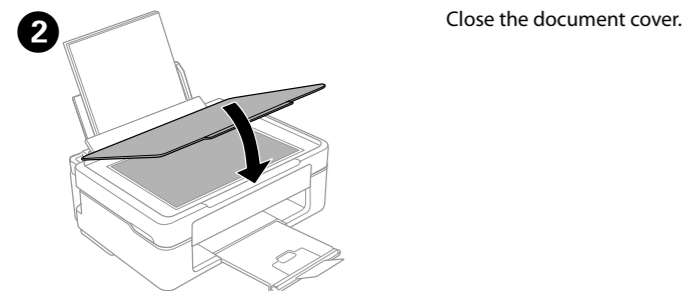


Slide the edge guide against the paper, and flip the guard back.

Copying

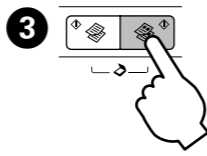


Open the document cover and place your original face-down on the scanner glass. Align the original with the front right corner of the glass.



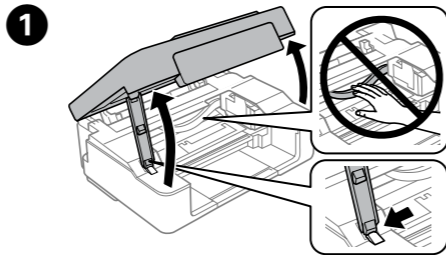
Close the document cover.

3 Press one of the ◊ buttons to start copying.



- Hold down one of the ◊ buttons for 3 seconds to copy in draft mode.
- Hold down Ⓞ and press one of the ◊ buttons to make 20 copies.

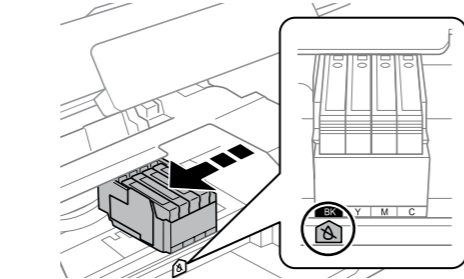
Replacing Ink Cartridges



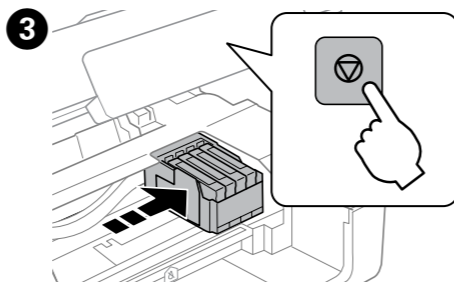
Open the scanner unit with the document cover closed.

2 Operate the printer's buttons to move the print head.

- If the ▲ light is on
Press the Ⓞ button. The expended ink cartridge moves to the & icon. If there are more expended ink cartridges, the cartridge moves to the & icon every time you press the Ⓞ button.
- If the ▲ light flashes
Press the Ⓞ button for six seconds until the print head moves. The ink cartridge that is running low moves to the & icon. If there are more ink cartridges running low, the cartridge moves to the & icon every time you press the Ⓞ button.

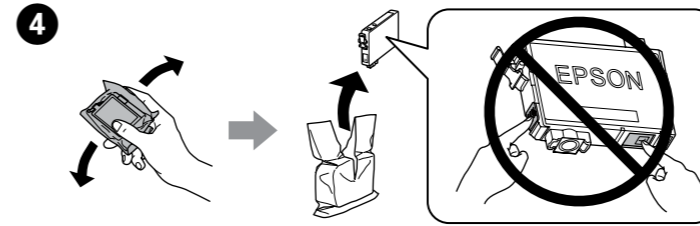


- If the ▲ light is off
Press the Ⓞ button for six seconds until the print head moves. The print head moves to the ink cartridge replacement position. Proceed to step 4.



Press Ⓞ again to move the print head to the ink cartridge replacement position.

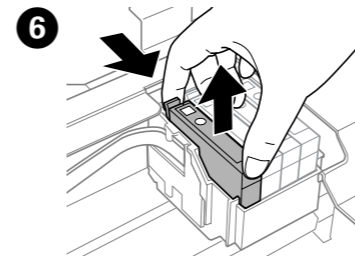
⚠ Never touch the ink cartridges while the print head is moving.



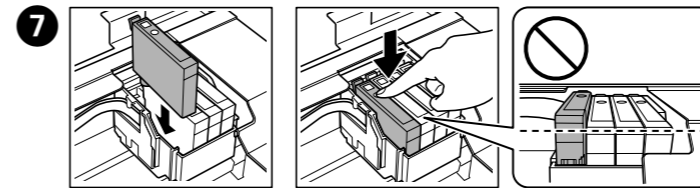
Prepare new ink cartridge(s). For best results, gently shake the new ink cartridge four or five times and then unpack.



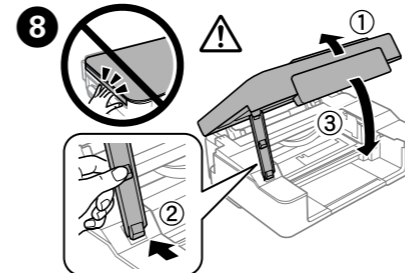
Remove only the yellow tape.



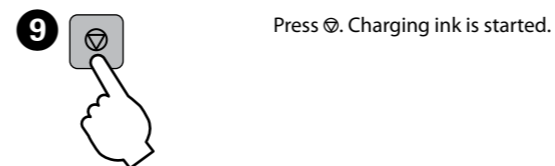
Squeeze the tab on the ink cartridge and lift it out.



Insert the new ink cartridge and press it down firmly.



Close the scanner unit.



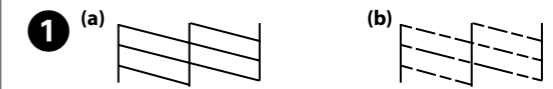
Press Ⓞ. Charging ink is started.



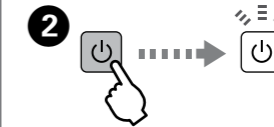
Charging ink takes about 2 minutes. Wait until the light stops flashing.

Print Quality Help

If you see missing segments or broken lines in your printouts, try the following solutions.



Print a nozzle check pattern to check if the print head nozzles are clogged. Turn off the printer, and then turn it back on while holding down Ⓞ. If you notice any missing segments or broken lines as shown in (b), go to step 2.



Run the print head cleaning. Hold down Ⓞ for 3 seconds until the power light starts flashing. The cleaning uses some ink from all cartridges, so run the cleaning only if print quality declines on your prints.

Windows® is a registered trademark of the Microsoft Corporation.

Mac OS is a trademark of Apple Inc., registered in the U.S. and other countries.

Android™ is a trademark of Google Inc.

The contents of this manual and the specifications of this product are subject to change without notice.

