


## Start Here

 Caution; must be followed carefully to avoid bodily injury.




© 2012 Seiko Epson Corporation. All rights reserved.  
Printed in XXXXXX

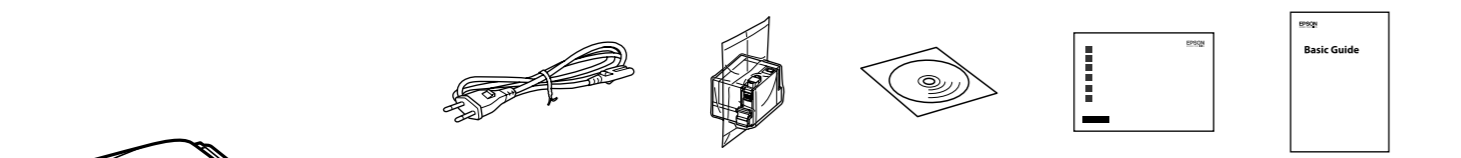


# 1

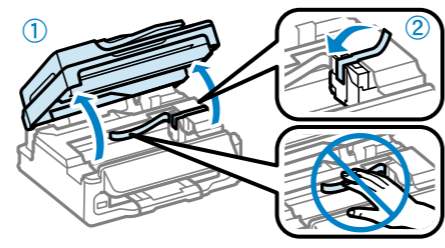
## Unpacking

Contents may vary by location.

 Do not open the ink cartridge package until you are ready to install it in the product. The cartridge is vacuum packed to maintain its reliability.



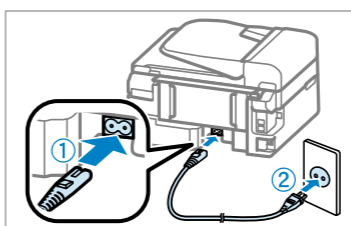
Remove all protective materials.

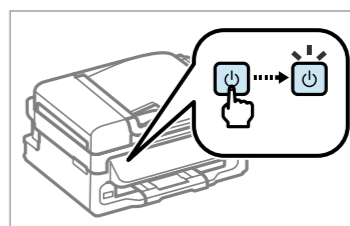


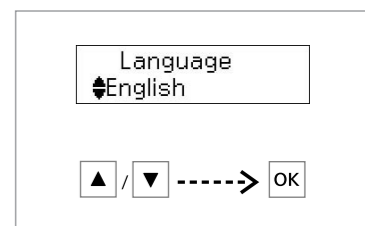
1. Lift the top cover of the cartridge.
2. Peel off the yellow tape.

# 2


## Turning On and Setting Up

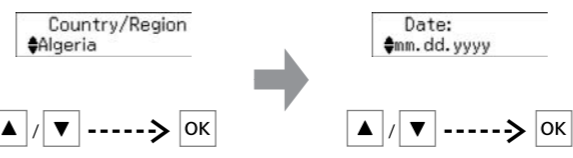
- 

Connect and plug in.
- 

Turn on.
- 


Select a language.

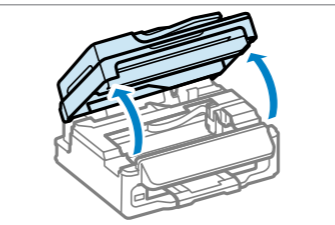
 Fax users also require country/region, date, and time settings.

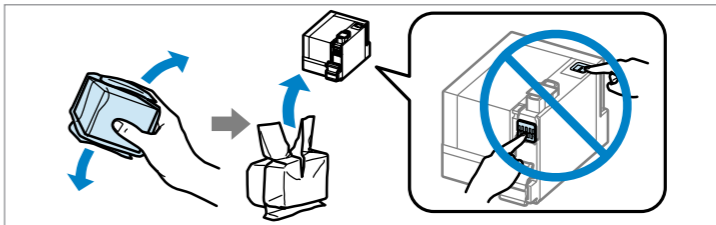


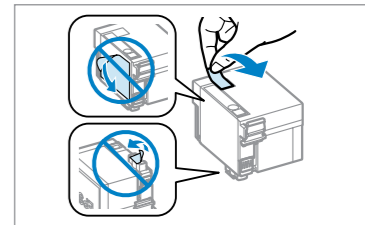
# 3

## Installing the Ink Cartridge

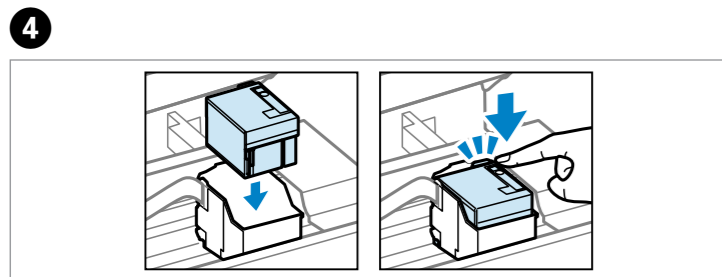
 For the initial setup, make sure you use the ink cartridge that came with this product. This cartridge cannot be saved for later use. The initial ink cartridge will be partly used to charge the print head. This cartridge may print fewer pages compared to subsequent ink cartridges.

- 

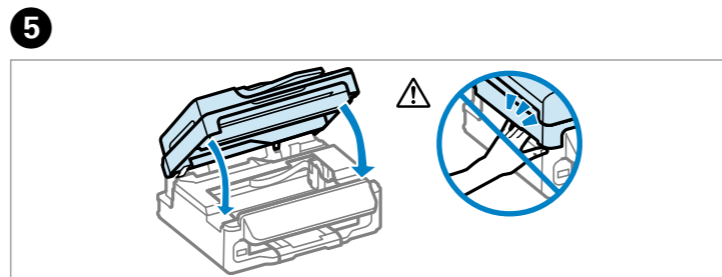
Open.
- 

Shake the cartridge and then unpack.
- 

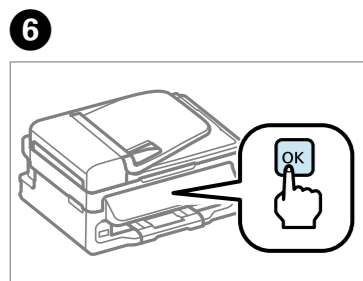
Remove only the yellow tape.



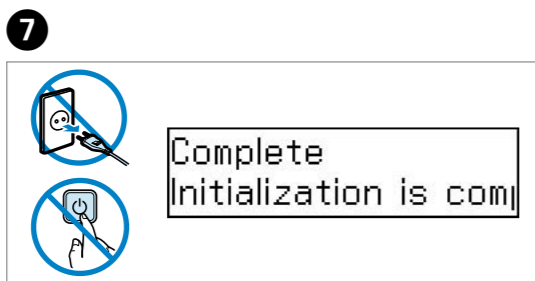
Insert the cartridge. Press until it clicks.



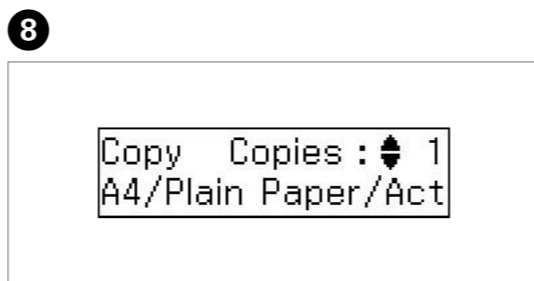
Close.



Press to start charging ink.



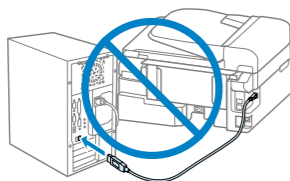
Wait until the charging is finished.



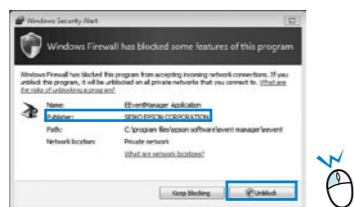
Now install CD and follow the instructions.

## Connecting to the Computer

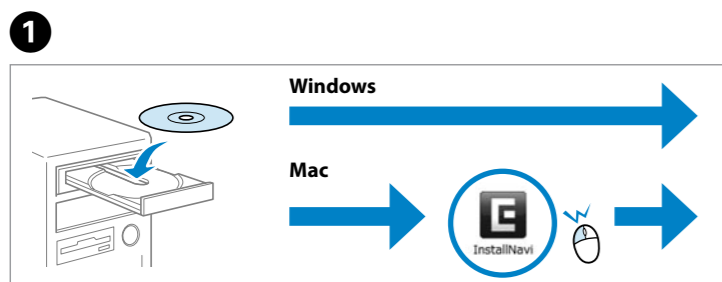
# 4



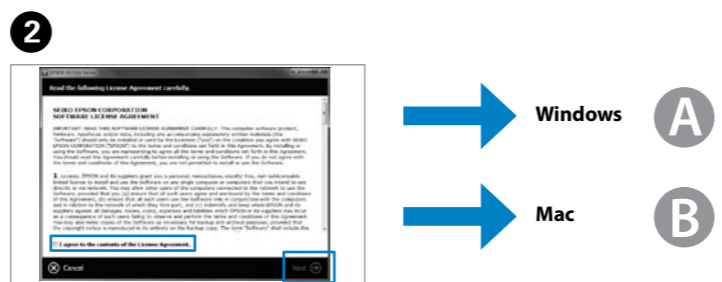
Do not connect the USB cable until you are instructed to do so.



If the Firewall alert appears, allow access for Epson applications.



Insert.



Check and proceed.

### A Windows

Select and follow the instructions.

Windows 7/Vista: AutoPlay window.

### B Mac

Select and follow the instructions.

Only the software with a selected check box is installed. **Epson Online Guides** contain important information such as troubleshooting and error indications. Install them if necessary.

### Getting More Information

See the *Basic Guide* for basic information.

You can see the online manuals. See the *User's Guide* for detailed information.

*User's Guide* (PDF file). *Network Guide* (HTML file)

### FAX

For fax users, see the fax section in the *Basic Guide* for information on connecting a phone cable for sending or receiving faxes.