

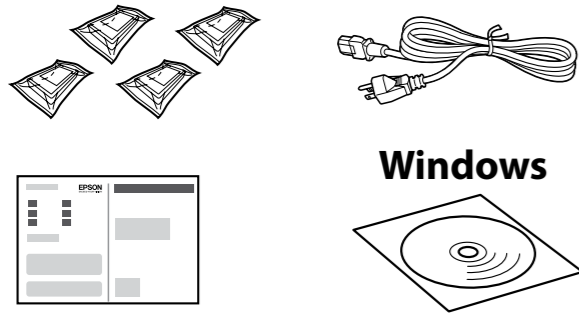
# Start Here

## 安裝說明

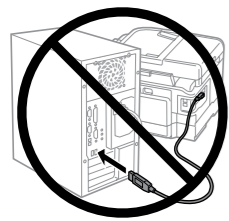


© 2014 Seiko Epson Corporation.  
All rights reserved.  
Printed in XXXXXX

**1**



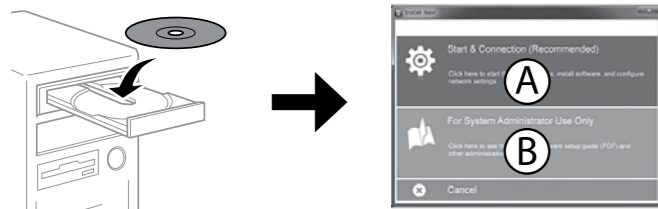
Contents may vary by location.  
內容可能因地點而有不同。



Do not connect a USB cable unless instructed to do so.  
除非有指示要求，否則請勿連接 USB 連接線。

**2**

### Windows



Insert the CD, and then select A or B.  
插入光碟，然後選擇 A 或 B。



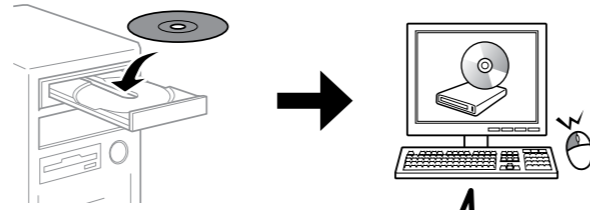
If the Firewall alert appears, allow access for Epson applications.  
若出現防火牆警示，請允許 Epson 應用程式進行存取。



### WF-5190/WF-5191/WF-5690

PCL/PS3(PostScript3) driver are bundled in CD.  
Access the following path if you want to install them.

PS3(PostScript3) 驅動程式隨附於光碟內。  
若要進行安裝，請存取下列路徑。



PCL :/Driver/PCLUniversal/Win64/ EP\_P6x64.exe  
:/Driver/PCLUniversal/Win32/ EP\_P6x86.exe  
PS3 :/Driver/PostScript/eppsnt.inf

### Windows (No CD/DVD drive) Mac OS X

➔ <http://support.epson.net/setupnavi/>

Visit the website to start the setup process, install software, and configure network settings.

若要啟動設定程序、安裝軟體及進行網路設定，請造訪網站。

### iOS / Android



<http://ipr.to/c>

## Epson Connect

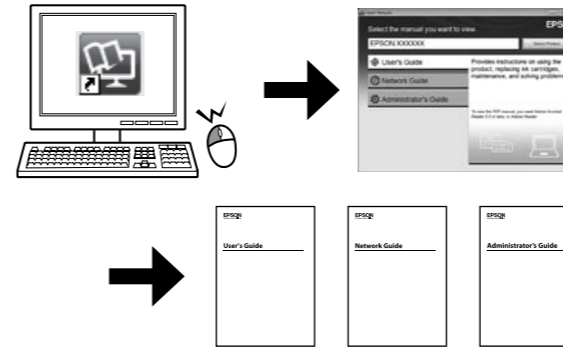


➔ <https://www.epsonconnect.com/>

Using your mobile device, you can print from any location worldwide to your Epson Connect compatible printer. Visit the website for more information.

透過行動裝置，您可從世界任何地點將資料列印至 Epson Connect 相容印表機。如需詳細資訊，請造訪網站。

## Questions?



You can open the *User's Guide* (PDF), *Network Guide* (PDF), and *Administrator's Guide* (PDF) from the shortcut icon, or download the latest versions from the following website.

您可從捷徑圖示開啓進階使用說明 (PDF)、網路使用說明 (PDF) 及管理員使用說明 (PDF)，或從下列網站下載最新版本。

➔ <http://support.epson.net/>

## Information for Users in Taiwan Only 台灣使用者適用資訊

### WF-5191

- 產品名稱：彩色噴墨印表機
- 額定電壓：AC 100 - 240 V
  - 額定頻率：50 至 60 Hz
  - 耗電量：
    - 列印時：約 25 W
    - 就緒模式：約 6.2 W
    - 睡眠模式：約 2.3 W
    - 關機模式：約 0.3 W
  - 額定電流：0.8 to 0.4 A

### WF-5621

- 產品名稱：多功能印表機
- 額定電壓：AC 100 - 240 V
  - 額定頻率：50 至 60 Hz
  - 耗電量：
    - 單機複印時：約 20 W
    - 就緒模式：約 7.8 W
    - 省電模式：約 1.8 W
    - 關機模式：約 0.3 W
  - 額定電流：0.8 to 0.4 A

製造年份、製造號碼和生產國別：見機體標示

### 警語

檢修本產品之前，請先拔掉本產品的電源線。

### 功能規格

- 列印方式：微針點壓電噴墨技術
- 解析度：最大可達 4800 x 1200 dpi
- 適用系統：
  - Windows 8, Windows 7, Vista, XP SP1 以上版本, XP Professional x64 Edition, Server 2012\*, Server 2008 R2\*, Server 2008\*, Server 2003\*, and Server 2003 R2\* (\*WF-5191: 僅限印表機驅動程式。)
  - (\*WF-5621: 僅限印表機驅動程式與掃描器驅動程式。)
- Mac OS X 10.5.8, 10.6.x, 10.7.x, 10.8.x

### 使用方法

見內附相關說明文件

### 緊急處理方法

發生下列狀況時，請先拔下印表機的電源線並洽詢Epson授權服務中心：

- 電源線或插頭損壞
- 有液體噴灑到印表機
- 印表機摔落或機殼損壞
- 印表機無法正常操作或是列印品質與原來有明顯落差

### 注意事項

- 只能使用印表機標籤上所註明的電源規格。
- 請保持工作場所的通風良好。

製造商：SEIKO EPSON CORPORATION  
地址：80 Harashinden, Hirooka, Shiojiri-shi, Nagano-ken, 399-0785, JAPAN  
電話：81-263-52-2552  
進口商：台灣愛普生科技股份有限公司  
地址：台北市信義區松仁路7號14樓  
電話：(02) 8786-6688 (代表號)

# Safety Instructions

## Safety Instructions

### 安全說明



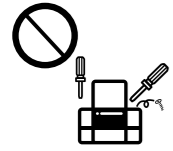
Use only the power cord supplied with the product and do not use the cord with any other equipment. Use of other cords with this product or the use of the supplied power cord with other equipment may result in fire or electric shock.

印表機的電源線只適用這台印表機，不得使用其他設備的電源線。印表機使用其他電源線，或將隨附電源線用於其他設備，可能會造成電線走火或觸電。



Be sure your AC power cord meets the relevant local safety standard.

確定 AC 電源線符合當地的安全標準。



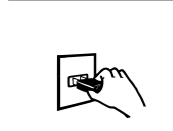
Never disassemble, modify, or attempt to repair the power cord, plug, printer unit, scanner unit, or options by yourself, except as specifically explained in the product's guides.

除了進階使用說明中所特別說明的部分之外，請勿自行拆解、更改、或企圖維修電源線、插頭、列印單元、掃描單元或選購品。



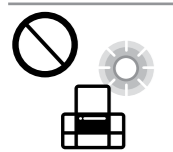
Unplug the product and refer servicing to qualified service personnel under the following conditions:  
The power cord or plug is damaged; liquid has entered the product; the product has been dropped or the casing damaged; the product does not operate normally or exhibits a distinct change in performance. Do not adjust controls that are not covered by the operating instructions.

遇有下列情形時，請拔下印表機的電源線，並洽詢合格的服務人員進行維修：  
電源線或插頭受損、液體流進印表機、印表機摔落或外殼受損、印表機運作不正常或效能出現明顯差異。請勿調整操作說明中沒有提到的控制項目。



Place the product near a wall outlet where the plug can be easily unplugged.

將本印表機放在靠近牆壁電源插座的地方，以便拔下插頭。



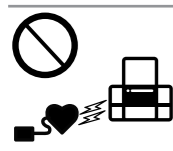
Do not place or store the product outdoors, near excessive dirt or dust, water, heat sources, or in locations subject to shocks, vibrations, high temperature or humidity.

請勿將印表機放置或儲存在室外、靠近灰塵粉末較多之處、水源、熱源，以及易震動、搖晃或高溫潮濕的地方。



Take care not to spill liquid on the product and not to handle the product with wet hands.

請小心避免將任何液體潑灑在這台印表機上，雙手潮濕時請勿操作印表機。



Keep this product at least 22 cm away from cardiac pacemakers. Radio waves from this product may adversely affect the operation of cardiac pacemakers.

請將本印表機與心臟節律器至少保持 22 公分的距離，以免本印表機所釋放的無線電波影響心臟節律器的運作。



If the LCD screen is damaged, contact your dealer. If the liquid crystal solution gets on your hands, wash them thoroughly with soap and water. If the liquid crystal solution gets into your eyes, flush them immediately with water. If discomfort or vision problems remain after a thorough flushing, see a doctor immediately.

若液晶螢幕有所損壞，請聯絡您的經銷商。若液晶溶液接觸您的雙手，請以肥皂及清水徹底洗淨。若液晶溶液噴到眼睛，請立刻以清水沖洗。若完全沖洗後仍感到不適或視覺有問題，請馬上就醫。



Keep ink cartridges out of the reach of children.

請將墨水匣放在孩童無法取得之處。



Be careful when you handle used ink cartridges, as there may be some ink around the ink supply port.

If ink gets on your skin, wash the area thoroughly with soap and water.

If ink gets into your eyes, flush them immediately with water.

If discomfort or vision problems continue after a thorough flushing, see a doctor immediately.

If ink gets into your mouth, spit it out immediately and see a doctor right away.

處理墨水匣請小心，因為可能還有一些墨水殘留在墨水孔周圍。

若墨水沾到皮膚，請以肥皂及清水徹底洗淨。

若墨水噴入眼睛，請立刻以清水沖洗。

若完全沖洗後仍感到不適或視覺有問題，請立即就醫。

若誤食墨水，請立即將墨水吐出並即刻送醫治療。

## For Fax Model

### 傳真機型適用



Avoid using a telephone during an electrical storm. There may be a remote risk of electric shock from lightning.

避免在雷電暴風雨的天氣使用電話，有可能因閃電而發生遠距離觸電的危險。



Do not use a telephone to report a gas leak in the vicinity of the leak.

當附近有瓦斯洩漏時，請勿使用電話回報洩漏情形。



Always keep this guide handy.

請妥善保管本使用說明。

## For New Zealand Users

### General warning

The grant of a Telepermit for any item of terminal equipment indicates only that Telecom has accepted that the item complies with the minimum conditions for connection to its network. It indicates no endorsement of the product by Telecom, nor does it provide any sort of warranty. Above all, it provides no assurance that any item will work correctly in all respects with another item of Telepermitted equipment of a different make or model, nor does it imply that any product is compatible with all of Telecom's network services.

Telepermitted equipment only may be connected to the EXT telephone port. This port is not specifically designed for 3-wire-connected equipment. 3-wire-connected equipment might not respond to incoming ringing when attached to this port.

The automatic calling functions of this equipment must not be used to cause a nuisance to other Telecom customers.

Windows® is a registered trademark of the Microsoft Corporation.

Mac OS is a trademark of Apple Inc., registered in the U.S. and other countries.

Android™ is a registered trademark of Google Inc.

PCL is a registered trademark of Hewlett-Packard Company.

PostScript3 is a trademark of Adobe systems Incorporated, which may be registered in certain jurisdictions.

The contents of this manual and the specifications of this product are subject to change without notice.

