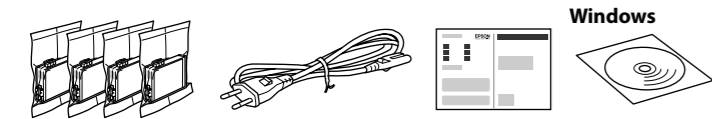


EPSON EXCEED YOUR VISION
WF-3720 Series
WF-3730 Series
WF-4720 Series

EN Start Here



© 2018 Seiko Epson Corporation
 Printed in XXXXXX



Contents may vary by location.

Do not open the ink cartridge package until you are ready to install it in the printer. The cartridge is vacuum packed to maintain its reliability.

Do not connect a USB cable unless instructed to do so.

Illustrations of the printer used in this manual are examples only.

1. Setting up the Printer

- Remove all protective materials.
- <Connecting to PBX>** **<Connecting to DSL or ISDN>**

Available phone cable	RJ-11 Phone Line / RJ-11 Telephone set connection
-----------------------	---

Connect a phone cable.

Depending on the area, a phone cable may be included with the printer, if so, use the cable.
- If you want to share the same phone line as your telephone, remove the cap and then connect the telephone to the EXT. port.
- Connect and plug in.
- Turn on.
- Select a language, country and time.

- Open.
- Gently shake all new ink cartridges four or five times and then remove it from its package.

Do not touch the sections shown in the illustration of the cartridge.
- Remove only the yellow tape.

For the initial setup, make sure you use the ink cartridges that came with this printer. These cartridges cannot be saved for later use. The initial ink cartridges will be partly used to charge the print head. These cartridges may print fewer pages compared to subsequent ink cartridges.
- Insert all four cartridges. Press each unit until it clicks.
- Close.
- Wait until ink charging is finished. If ink charging does not start, follow the instructions on the LCD screen.

- Pull out.
- Slide the edge guides and slide the front edge guide to adjust to the A4 side.
- Load A4 size paper toward the front edge guide with the printable side face down then slide the side edge guides to the paper.
- Insert and then unfold the tray.
- Set the paper size and paper type for the paper cassette. You can change these settings later.
- Make the fax settings. You can change these settings later. If you do not want to make settings now, close the fax settings screen.

2. Installing Software

Windows



Insert the CD, and then select A or B.

If the Firewall alert appears, allow access for Epson applications.

No CD/DVD drive Mac OS X



Visit the website to start the setup process, install software, and configure network settings.

iOS/Android



Epson Connect



Using your mobile device, you can print from any location worldwide to your Epson Connect compatible product. Visit the website for more information.

Questions?

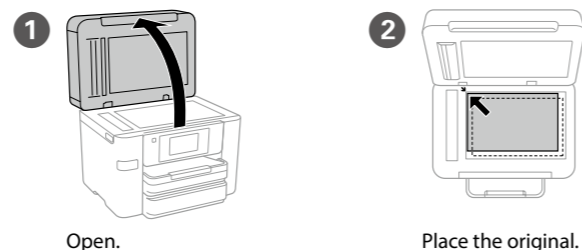


You can open the PDF manuals from the shortcut icon, or download the latest versions from the following website.

➔ <http://www.epson.eu/Support> (Europe)
<http://support.epson.net/> (outside Europe)

Basic Operations

Copying



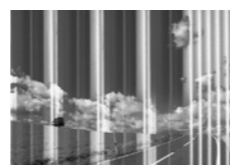
5 Make other settings as necessary.

6 Tap to start copying.

Tap the section shown in the illustration to enter the number of copies.

Print Quality Help

If you see missing segments or broken lines in your printouts, print a nozzle check pattern to check if the print head nozzles are clogged. See the User's Guide for more details.



Ink Cartridge Codes

	Black	Cyan	Magenta	Yellow
WF-3720 series	702	702	702	702
WF-3730 series	702XL	702XL	702XL	702XL
WF-4720 series	802	802	802	802
	802XL	802XL	802XL	802XL

"XL" indicates large cartridge.

For New Zealand Users

General warning

The grant of a Telepermit for any item of terminal equipment indicates only that Telecom has accepted that the item complies with the minimum conditions for connection to its network. It indicates no endorsement of the product by Telecom, nor does it provide any sort of warranty. Above all, it provides no assurance that any item will work correctly in all respects with another item of Telepermitted equipment of a different make or model, nor does it imply that any product is compatible with all of Telecom's network services.

Telepermitted equipment only may be connected to the EXT telephone port. This port is not specifically designed for 3-wire-connected equipment. 3-wire-connected equipment might not respond to incoming ringing when attached to this port.

The automatic calling functions of this equipment must not be used to cause a nuisance to other Telecom customers.

IMPORTANT NOTICE

Under power failure conditions, this telephone may not operate. Please ensure that a separate telephone, not dependent on local power, is available for emergency use.

Windows® is a registered trademark of the Microsoft Corporation.
Mac OS is a trademark of Apple Inc., registered in the U.S. and other countries.
Android™ is a trademark of Google Inc.

The contents of this manual and the specifications of this product are subject to change without notice.

