

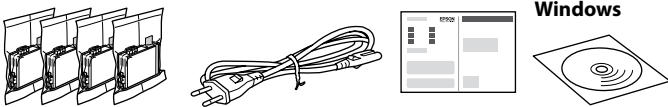
Start Here



412520600

© 2013 Seiko Epson Corporation.
All rights reserved.
Printed in XXXXXX

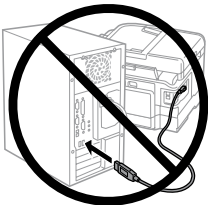
1



Contents may vary by location.



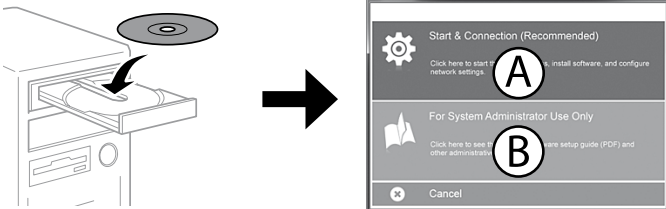
Do not open the ink cartridge package until you are ready to install it in the printer. The cartridge is vacuum packed to maintain its reliability.



Do not connect a USB cable unless instructed to do so.

2

Windows



Insert the CD, and then select A or B.



If the Firewall alert appears, allow access for Epson applications.

Windows (No CD/DVD drive)

Mac OS X



Visit the website to start the setup process, install software, and configure network settings.

iOS / Android



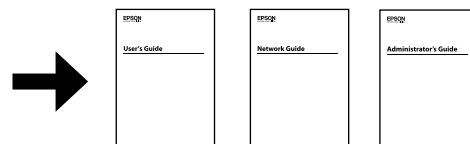
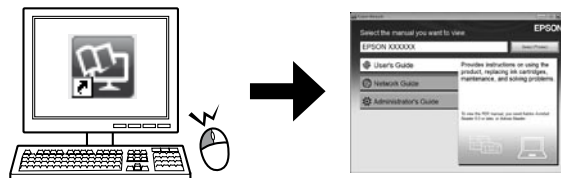
<http://ipr.to/c>

Epson Connect

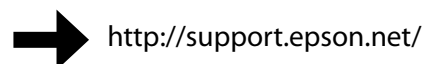


Using your mobile device, you can print from any location worldwide to your Epson Connect compatible printer. Visit the website for more information.

Questions?

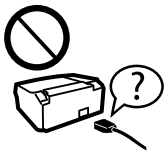


You can open the *User's Guide* (PDF), *Network Guide* (PDF), and *Administrator's Guide* (PDF) from the shortcut icon, or download the latest versions from the following website.



Safety Instructions

Safety Instructions



Use only the power cord supplied with the product and do not use the cord with any other equipment. Use of other cords with this product or the use of the supplied power cord with other equipment may result in fire or electric shock.



Be sure your AC power cord meets the relevant local safety standard.



Never disassemble, modify, or attempt to repair the power cord, plug, printer unit, scanner unit, or options by yourself, except as specifically explained in the product's guides.



Unplug the product and refer servicing to qualified service personnel under the following conditions: The power cord or plug is damaged; liquid has entered the product; the product has been dropped or the casing damaged; the product does not operate normally or exhibits a distinct change in performance. Do not adjust controls that are not covered by the operating instructions.



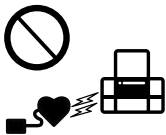
Place the product near a wall outlet where the plug can be easily unplugged.



Do not place or store the product outdoors, near excessive dirt or dust, water, heat sources, or in locations subject to shocks, vibrations, high temperature or humidity.



Take care not to spill liquid on the product and not to handle the product with wet hands.



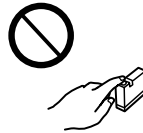
Keep this product at least 22 cm away from cardiac pacemakers. Radio waves from this product may adversely affect the operation of cardiac pacemakers.



If the LCD screen is damaged, contact your dealer. If the liquid crystal solution gets on your hands, wash them thoroughly with soap and water. If the liquid crystal solution gets into your eyes, flush them immediately with water. If discomfort or vision problems remain after a thorough flushing, see a doctor immediately.



Keep ink cartridges out of the reach of children.



Be careful when you handle used ink cartridges, as there may be some ink around the ink supply port. If ink gets on your skin, wash the area thoroughly with soap and water. If ink gets into your eyes, flush them immediately with water.



If discomfort or vision problems continue after a thorough flushing, see a doctor immediately. If ink gets into your mouth, spit it out immediately and see a doctor right away.



To prevent injuries, the product should be lifted and carried by two people.

For Fax Model



Avoid using a telephone during an electrical storm. There may be a remote risk of electric shock from lightning.



Do not use a telephone to report a gas leak in the vicinity of the leak.



Always keep this guide handy.

For New Zealand Users

General warning

The grant of a Telepermit for any item of terminal equipment indicates only that Telecom has accepted that the item complies with the minimum conditions for connection to its network. It indicates no endorsement of the product by Telecom, nor does it provide any sort of warranty. Above all, it provides no assurance that any item will work correctly in all respects with another item of Telepermitted equipment of a different make or model, nor does it imply that any product is compatible with all of Telecom's network services.

Telepermitted equipment only may be connected to the EXT telephone port. This port is not specifically designed for 3-wire-connected equipment. 3-wire-connected equipment might not respond to incoming ringing when attached to this port.

The automatic calling functions of this equipment must not be used to cause a nuisance to other Telecom customers.

Windows® is a registered trademark of the Microsoft Corporation. Mac OS is a trademark of Apple Inc., registered in the U.S. and other countries.

Android™ is a registered trademark of Google Inc.

The contents of this manual and the specifications of this product are subject to change without notice.

