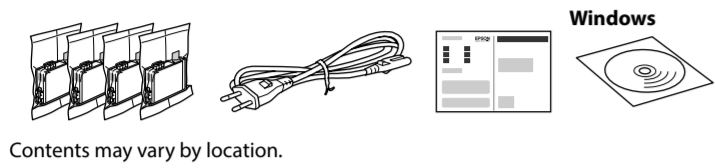


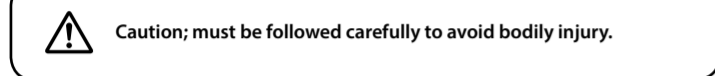
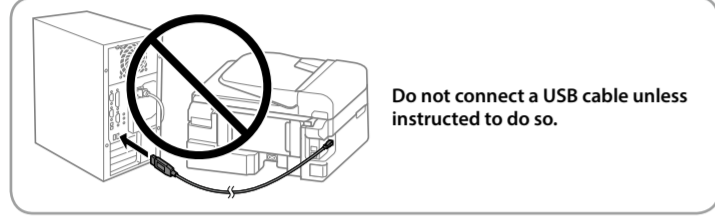
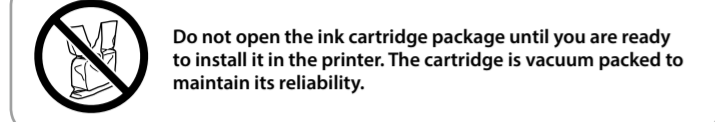
# Start Here



© 2014 Seiko Epson Corporation.  
All rights reserved.  
Printed in XXXXXX



Contents may vary by location.



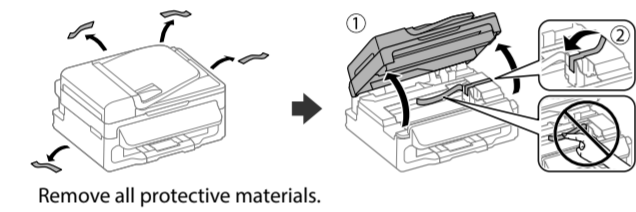
Windows® is a registered trademark of the Microsoft Corporation.  
Mac OS is a trademark of Apple Inc., registered in the U.S. and other countries.  
Android™ is a registered trademark of Google Inc.

The contents of this manual and the specifications of this product are subject to change without notice.



## WF-2630

### 1. Unpacking



Remove all protective materials.

### 2. Setting up the Product

- Make sure you connect the noise filter as shown.

Do not use this filter for any other products.
- <Connecting to PBX>      <Connecting to DSL or ISDN>

Available phone cable      RJ-11 Phone Line / RJ-11 Telephone set connection

Connect a phone cable.  
Depending on the area, a phone cable may be included with the printer, if so, use the cable.
- If you want to share the same phone line as your telephone, remove the cap and then connect the telephone to the EXT. port.
- Connect and plug in.
- Turn on.
- Select a language, country and time.
- Open.

### 3. Installing Ink Cartridges

- Shake all new cartridges and then unpack.

Do not touch the sections shown in the illustration of the cartridge.
- Remove only the yellow tape.

For the initial setup, make sure you use the ink cartridges that came with this printer. These cartridges cannot be saved for later use. The initial ink cartridges will be partly used to charge the print head. These cartridges may print fewer pages compared to subsequent ink cartridges.
- Insert all four cartridges. Press each unit until it clicks.
- Close.
- Information  
Initialization complete.  
Done

Press  $\diamond$  to start ink charging. Wait until the charging is finished.

### 4. Loading Paper

- Pull out.
- Slide the edge guides and load the A4 paper with the printable side face up.
- Slide the edge guides and load the A4 paper with the printable side face up.
- Paper Setup  
Select paper size and type  
Proceed

Set the paper size and paper type for the rear paper feed. You can change these settings later.

### 5. Fax Settings

Fax Settings  
Start setting up?  
Connect the phone line?  
Yes No

Make the fax settings. You can change these settings later. If you do not want to make settings now, close the fax settings screen.

### 6. Installing Software

Windows      No CD/DVD drive  
Mac OS X

<http://epson.jp>

Visit the website to start the setup process, install software, and configure network settings.

If the Firewall alert appears, allow access for Epson applications.

iOS/Android

Visit the website to install Epson iPrint application, start the setup process, and configure network settings.

<http://ipr.to/c>

### Epson Connect

<https://www.epsonconnect.com/>

Using your mobile device, you can print from any location worldwide to your Epson Connect compatible product. Visit the website for more information.

### Questions?

You can open the User's Guide (PDF) and Network Guide (PDF) from the shortcut icon, or download the latest versions from the following website.

<http://www.epson.com.au>

### Guide to Control Panel

1		Turns the printer on or off. Unplug the power cord when the power light is off.
2		Displays the home screen.
3		Enter the last dialed number or enter a pause when entering a fax number.
4		Stops the current operation.
5		Displays menus and messages.
6		Press $\leftarrow$ , $\rightarrow$ , $\uparrow$ , and $\downarrow$ to select menus. Press OK to confirm your selection or run the selected feature.
7		Returns to the previous screen.
8		Enters numbers, characters, and symbols.
9		Opens the contacts list.
10		Starts printing, copying, scanning, and faxing in black and white.
11		Starts printing, copying, scanning, and faxing in color.

### Copying

- Open.
- Place the original.
- Select Copy on the home screen.
- Copy  
Copies: 1  
With Border/A4/Actual  
Settings

Press the  $\uparrow$  and  $\downarrow$  buttons to enter the number of copies.
- Press the OK button. Select Layout, and then select the appropriate layout.
- Press the  $\downarrow$  button, and then make other settings as necessary.
- Press  $\diamond$  to start copying.

### Clearing the Paper Jam

From the Rear Paper Feed

- 

From inside the Printer

- 
- Do not touch the white flat cable or translucent part inside the printer. Doing so may cause a malfunction.
- 

### From the ADF

- 
- 

### Ink Cartridge Codes

Black	Cyan	Magenta	Yellow
220 220XL	220 220XL	220 220XL	220 220XL

\*"XL" indicates large cartridge.

### For New Zealand Users

**General warning**

The grant of a Telepermit for any item of terminal equipment indicates that Telecom has accepted that the item complies with the minimum conditions for connection to its network. It indicates no endorsement of the product by Telecom, nor does it provide any sort of warranty. Above all, it provides no assurance that any item will work correctly in all respects with another item of Telepermitted equipment of a different make or model, nor does it imply that any product is compatible with all of Telecom's network services.

Telepermitted equipment only may be connected to the EXT telephone port. This port is not specifically designed for 3-wire-connected equipment. 3-wire-connected equipment might not respond to incoming ringing when attached to this port.

The automatic calling functions of this equipment must not be used to cause a nuisance to other Telecom customers.

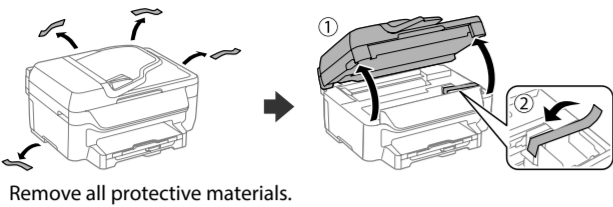
### Safety Instructions

- Use only the power cord supplied with the product and do not use the cord with any other equipment. Use of other cords with this product or the use of the supplied power cord with other equipment may result in fire or electric shock.
- Be sure your AC power cord meets the relevant local safety standard.
- Never disassemble, modify, or attempt to repair the power cord, plug, printer unit, scanner unit, or options by yourself, except as specifically explained in the product's guides.
- Unplug the product and refer servicing to qualified service personnel under the following conditions:  
The power cord or plug is damaged; liquid has entered the product; the product has been dropped or the casing damaged; the product does not operate normally or exhibits a distinct change in performance. Do not adjust controls that are not covered by the operating instructions.
- Place the product near a wall outlet where the plug can be easily unplugged.
- Do not place or store the product outdoors, near excessive dirt or dust, water, heat sources, or in locations subject to shocks, vibrations, high temperature or humidity.
- Take care not to spill liquid on the product and not to handle the product with wet hands.
- Keep this product at least 22 cm away from cardiac pacemakers. Radio waves from this product may adversely affect the operation of cardiac pacemakers.
- If the LCD screen is damaged, contact your dealer. If the liquid crystal solution gets on your hands, wash them thoroughly with soap and water. If the liquid crystal solution gets into your eyes, flush them immediately with water. If discomfort or vision problems remain after a thorough flushing, see a doctor immediately.
- Keep ink cartridges out of the reach of children.
- Be careful when you handle used ink cartridges, as there may be some ink around the ink supply port. If ink gets on your skin, wash the area thoroughly with soap and water. If ink gets into your eyes, flush them immediately with water. If discomfort or vision problems continue after a thorough flushing, see a doctor immediately. If ink gets into your mouth, spit it out immediately and see a doctor right away.
- Avoid using a telephone during an electrical storm. There may be a remote risk of electric shock from lightning.
- Do not use a telephone to report a gas leak in the vicinity of the leak.
- Always keep this guide handy.

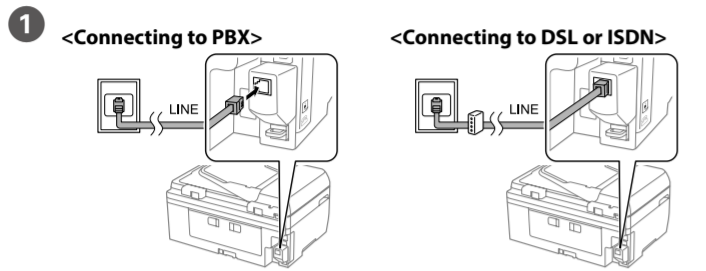


# WF-2650 WF-2660

## 1. Unpacking



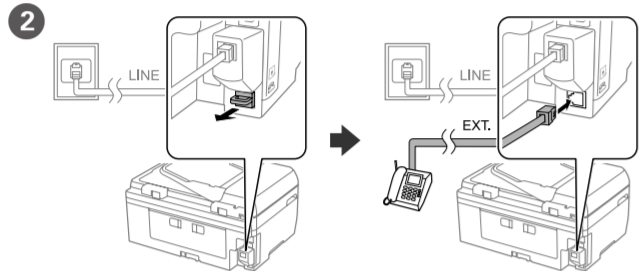
## 2. Setting up the Product



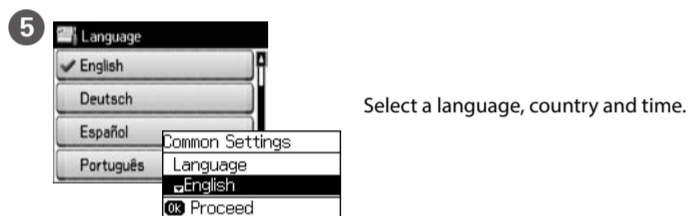
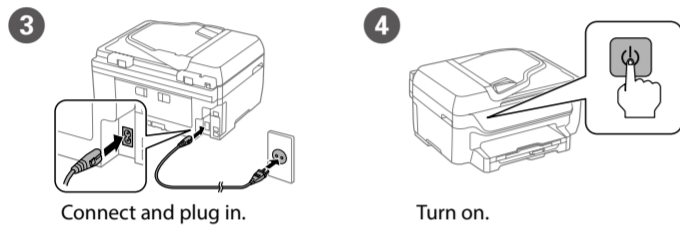
Available phone cable RJ-11 Phone Line / RJ-11 Telephone set connection

Connect a phone cable.

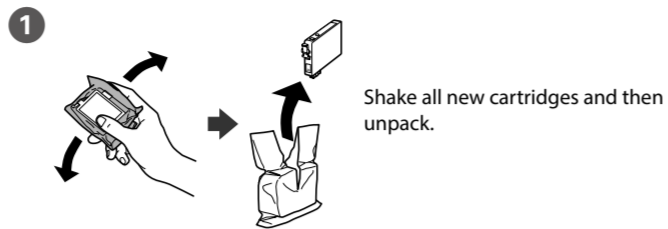
Depending on the area, a phone cable may be included with the printer. If so, use the cable.



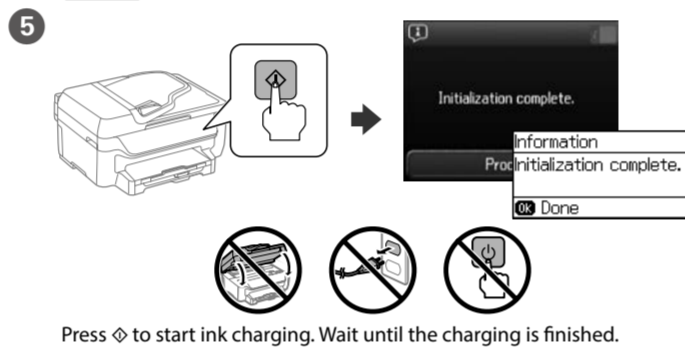
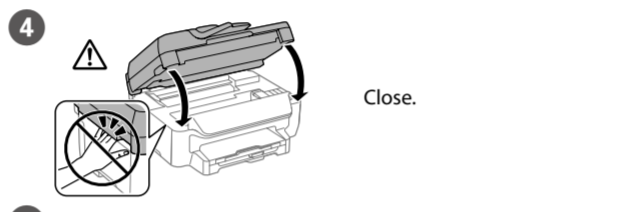
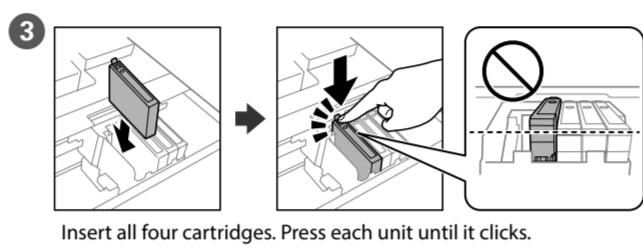
If you want to share the same phone line as your telephone, remove the cap and then connect the telephone to the EXT. port.



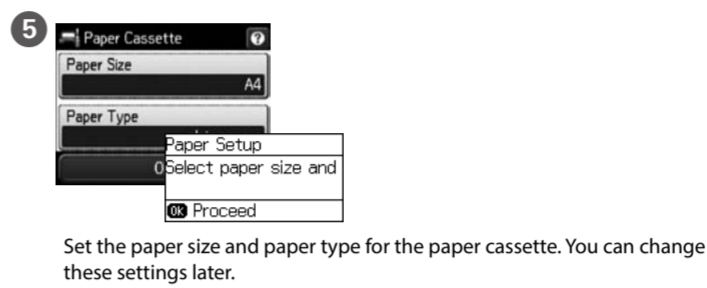
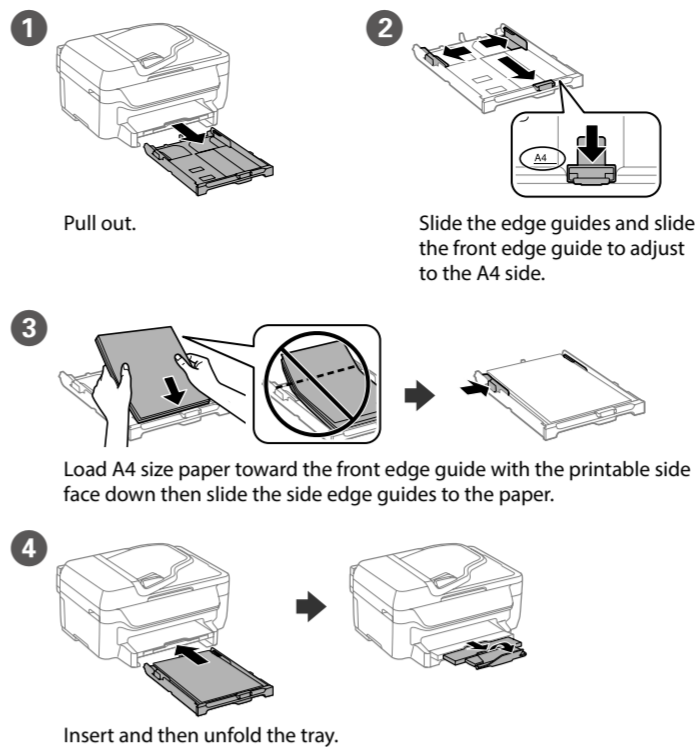
## 3. Installing Ink Cartridges



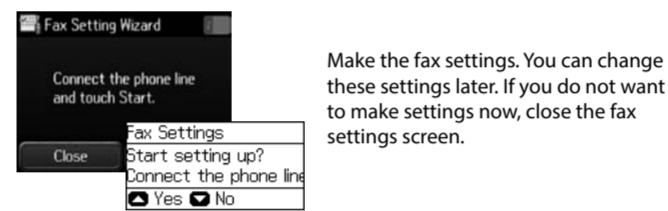
For the initial setup, make sure you use the ink cartridges that came with this printer. These cartridges cannot be saved for later use. The initial ink cartridges will be partly used to charge the print head. These cartridges may print fewer pages compared to subsequent ink cartridges.



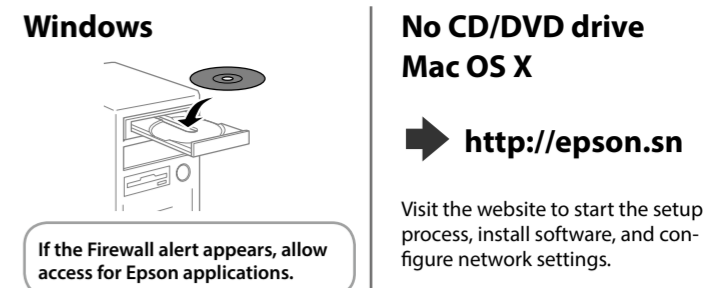
## 4. Loading Paper



## 5. Fax Settings



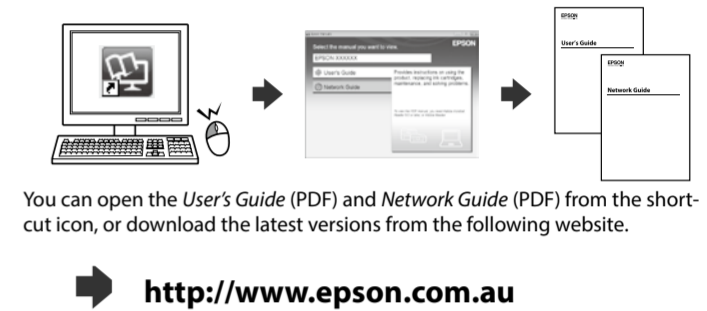
## 6. Installing Software



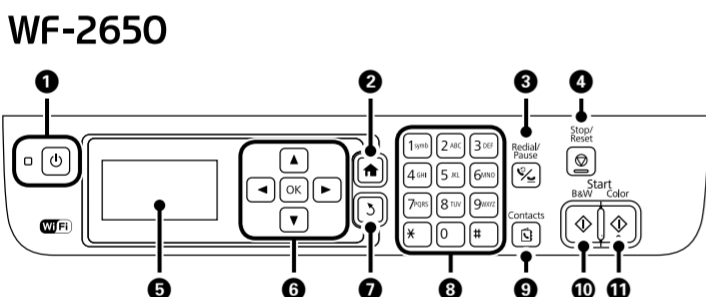
## Epson Connect



## Questions?

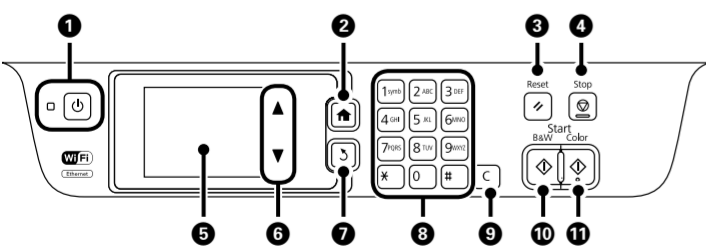


## Guide to Control Panel



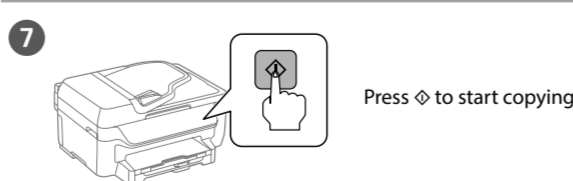
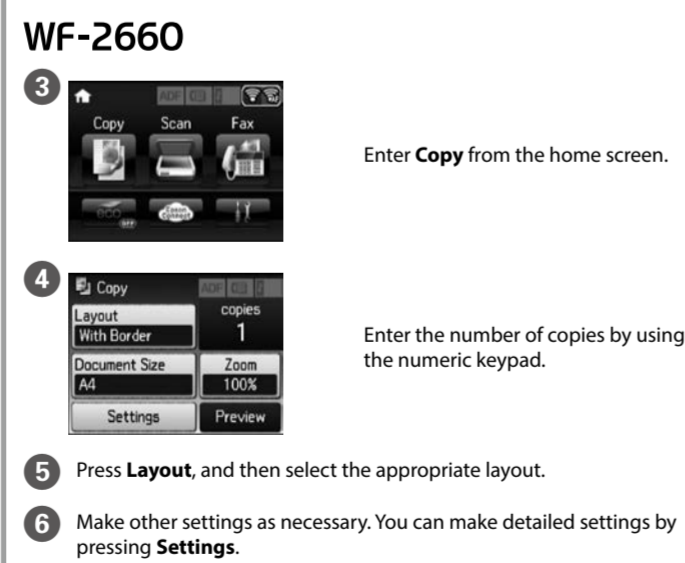
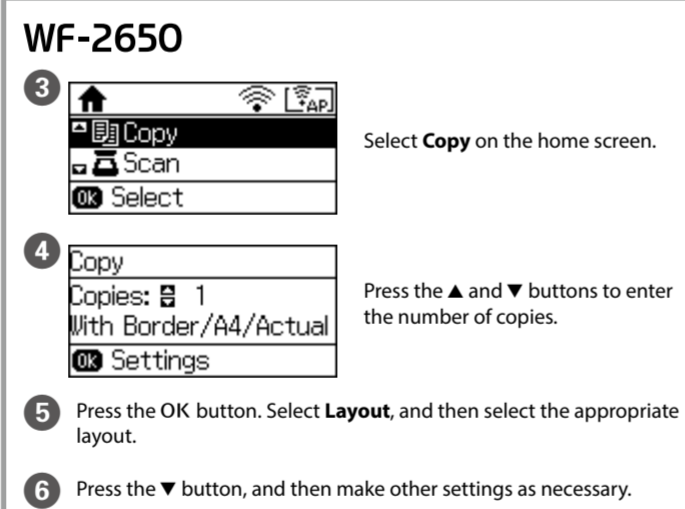
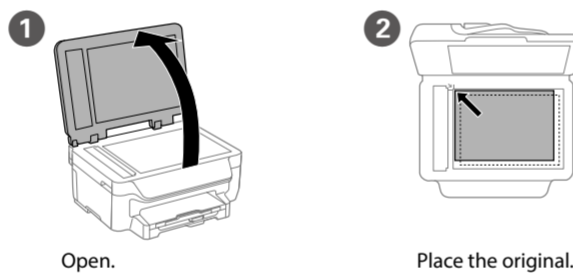
<b>1</b>		Turns the printer on or off. Unplug the power cord when the power light is off.
<b>2</b>		Displays the home screen.
<b>3</b>		Enter the last dialed number or enter a pause when entering a fax number.
<b>4</b>		Stops the current operation.
<b>5</b>	-	Displays menus and messages.
<b>6</b>		Press $\blacktriangle$ , $\blacktriangleright$ , and $\blacktriangledown$ to select menus. Press OK to confirm your selection or run the selected feature.
<b>7</b>		Returns to the previous screen.
<b>8</b>	0-9, *, #	Enters numbers, characters, and symbols.
<b>9</b>		Opens the contacts list.
<b>10</b>		Starts printing, copying, scanning, and faxing in black and white.
<b>11</b>		Starts printing, copying, scanning, and faxing in color.

### WF-2660

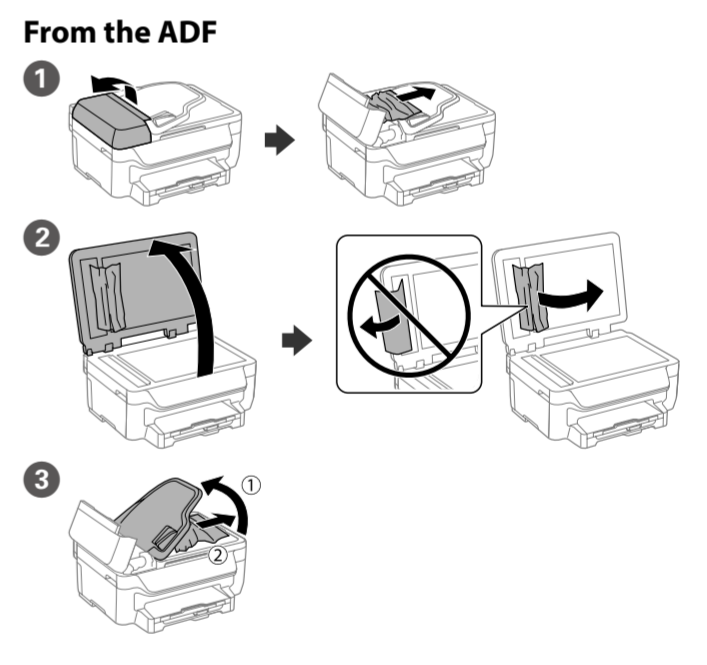
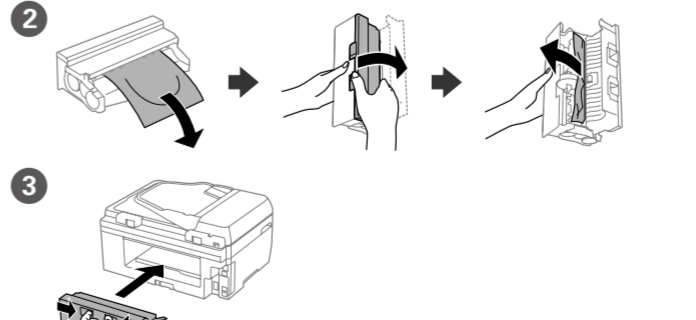
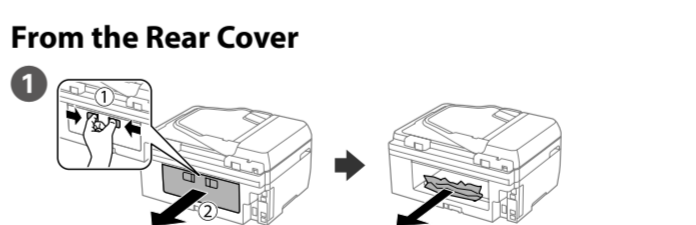
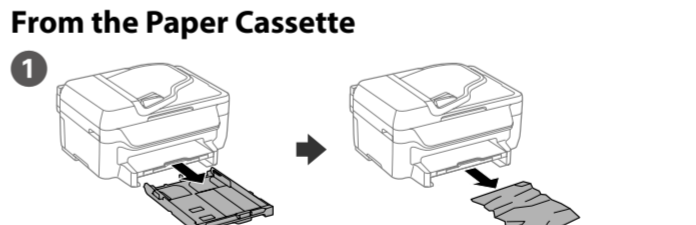
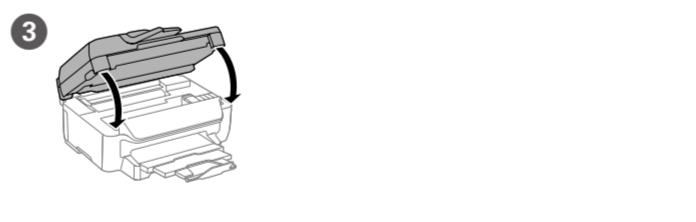
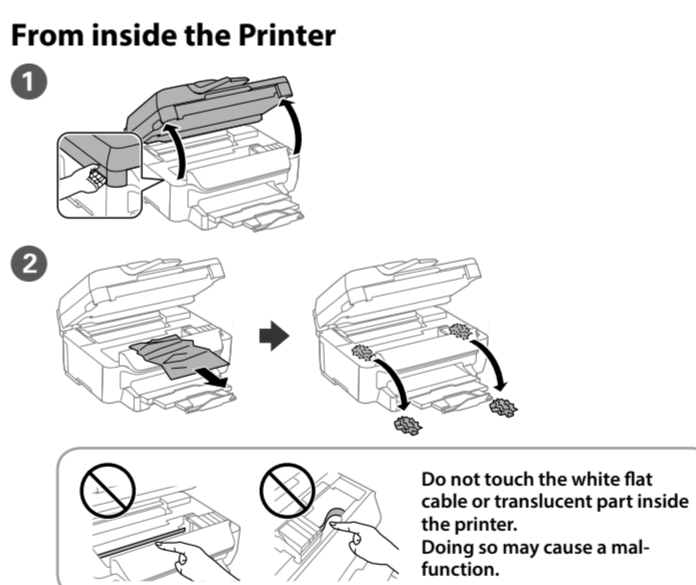


<b>1</b>		Turns the printer on or off. Unplug the power cord when the power light is off.
<b>2</b>		Displays the home screen.
<b>3</b>		Returns the current settings to their previous status.
<b>4</b>		Stops the current operation.
<b>5</b>	-	Displays menus and messages. Touch the LCD screen to select a menu, and scroll by swiping.
<b>6</b>		Scrolls the screen.
<b>7</b>		Returns to the previous screen.
<b>8</b>	0-9, *, #	Enters numbers, characters, and symbols.
<b>9</b>	C	Clears number settings such as the number of copies.
<b>10</b>		Starts printing, copying, scanning, and faxing in black and white.
<b>11</b>		Starts printing, copying, scanning, and faxing in color.

## Copying



## Clearing the Paper Jam



## Ink Cartridge Codes

Black	Cyan	Magenta	Yellow
220 220XL	220 220XL	220 220XL	220 220XL

\*"XL" indicates large cartridge.

Important Safety Instructions are on the back.  
For New Zealand users, instructions are on the back.