
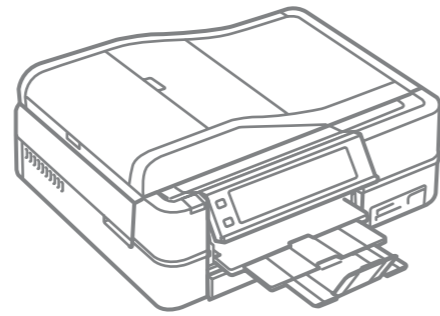


Start Here

 Warnings must be followed carefully to avoid bodily injury.



Copyright © 2010 Seiko Epson Corporation. All rights reserved.
Printed in XXXXXX

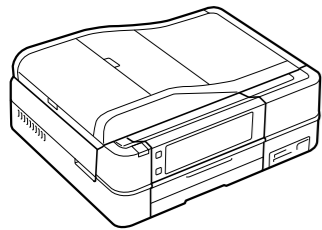


Unpacking

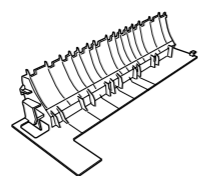
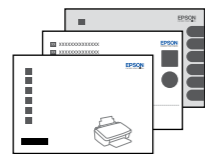
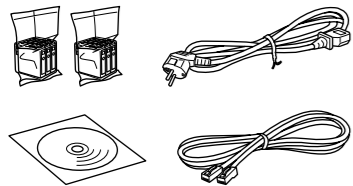
1

Contents may vary by location.

Do not open the ink cartridge package until you are ready to install it in the printer. The cartridge is vacuum packed to maintain its reliability.



Remove all protective materials.



Optional item: see "Using the Optional Rear Cover" in the *Basic Operation Guide*.

1

Pull out, remove, and dispose.

2

Open, remove, and install.

3

Close.

Turning On and Setting Up

2

1

Connect and plug in.

2

Turn On.

3

Adjust the angle.

4

Select a language.

Press ◀ or ▶ until the item you want is displayed.

5

Select a country/region, then set the date and time.

Attaching Panel Supplement Sticker

3

Depending on the location, the supplementary stickers may not be available.

1

Peel off.

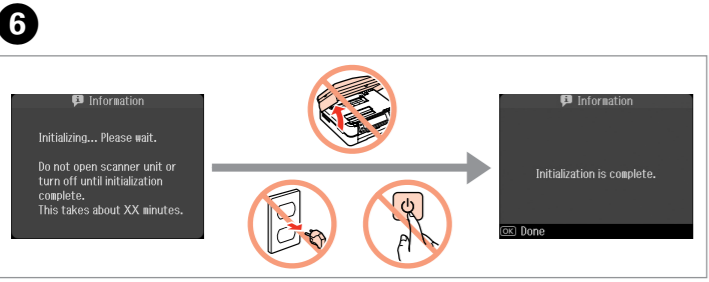
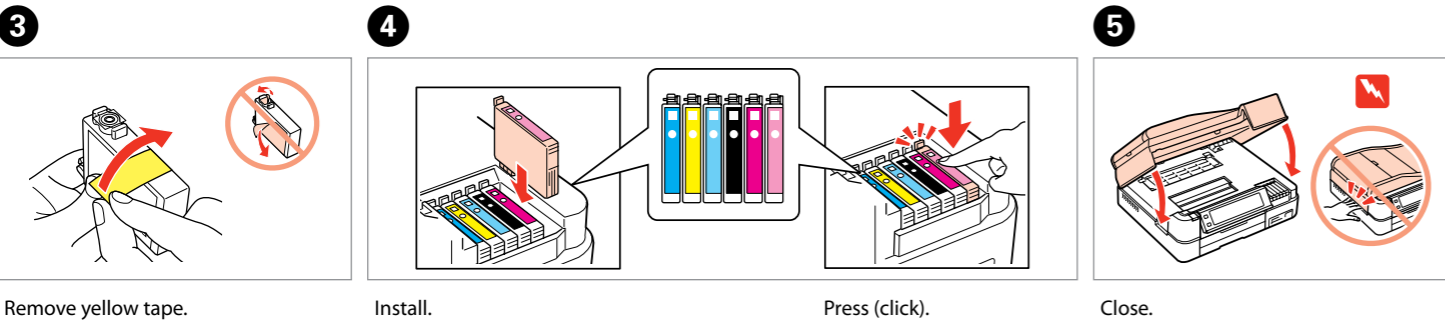
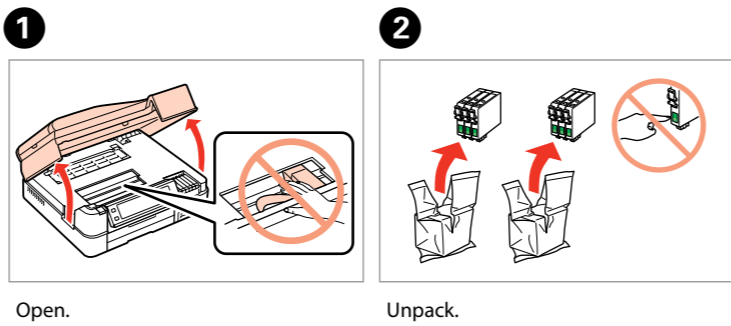
2

Stick.

4

Installing the Ink Cartridges

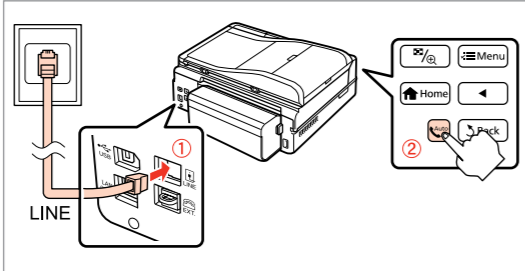
For the initial setup, make sure you use the ink cartridges that came with this printer.



The initial ink cartridges will be partly used to charge the print head. These cartridges may print fewer pages compared to subsequent ink cartridges.

5

Connecting the Phone Cable



See "Connecting to a Phone Line" in the *Basic Operation Guide* for details on connecting a phone or answering machine.

6

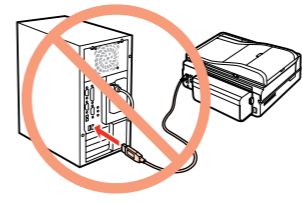
Selecting the Connection Type

For Wi-Fi and network connection, see the *Wi-Fi/Network Setup Guide*. For USB wired connection, go to the next section.

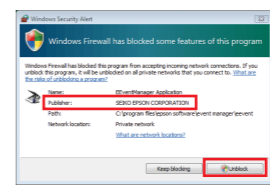


7

USB Wired Connection



Do not connect the USB cable until you are instructed to do so.



If the Firewall alert appears, allow access for Epson applications.

