
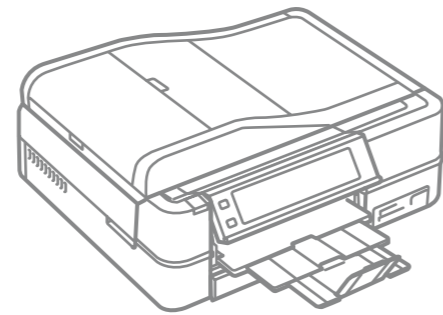


Start Here

 Warnings must be followed carefully to avoid bodily injury.



Copyright © 2008 Seiko Epson Corporation. All rights reserved.
Printed in XXXXXX

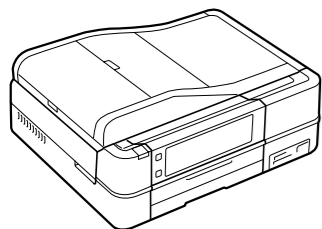
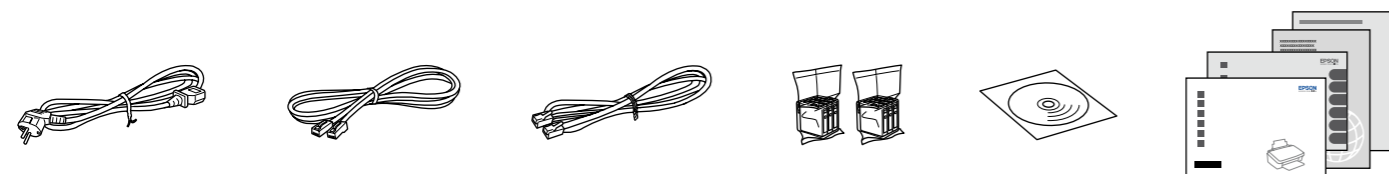


Unpacking

1

Contents may vary by location.

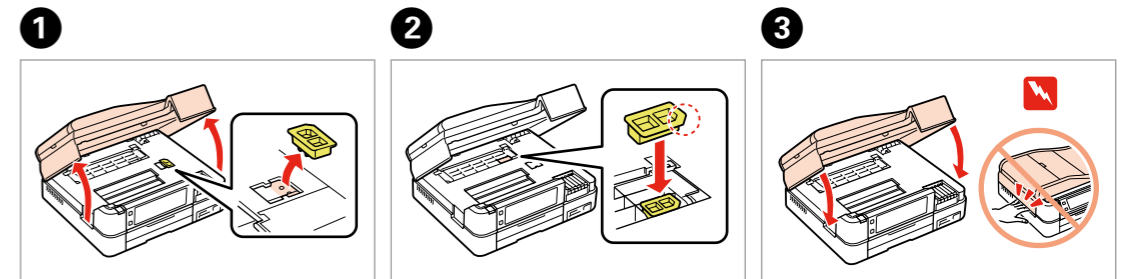
Do not open the ink cartridge package until you are ready to install it in the printer. The cartridge is vacuum packed to maintain its reliability.



Remove all protective materials.

Turning On and Setting Up

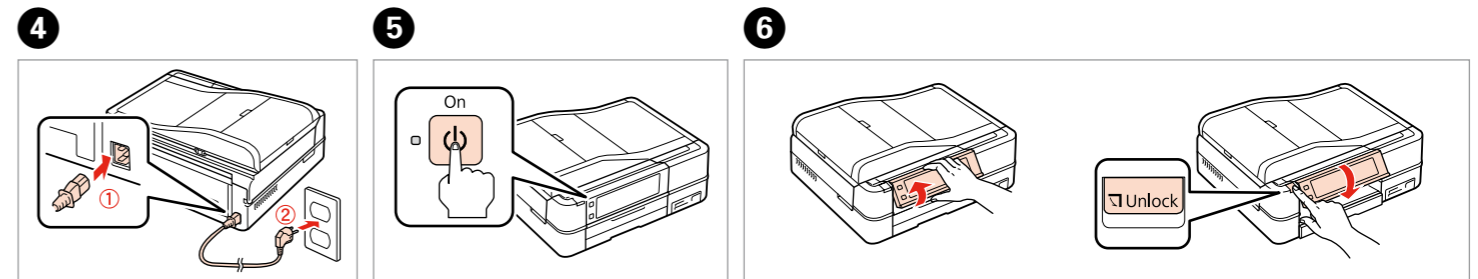
2



1 Open and remove.

2 Install.

3 Close.



4 Connect and plug in.

5 Turn On.

6 Adjust the angle.

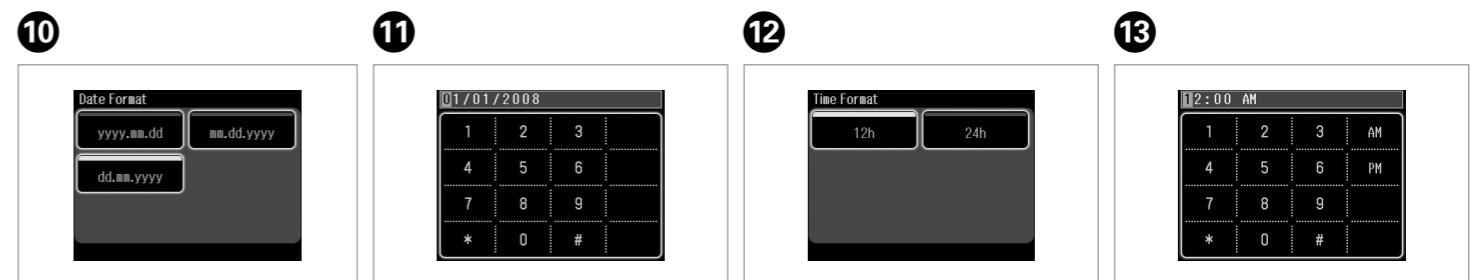


7 Select a language.

In steps 7 and 8, press ◀ or ▶ until the item you want is displayed.

8 Select.

9 Select.



10 Select.

11 Enter the date, then press **OK**.

12 Select.

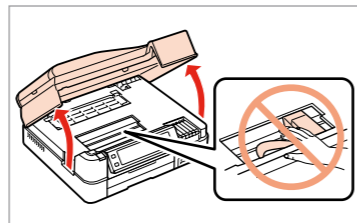
13 Enter the time, then press **OK**.

Installing the Ink Cartridges

3

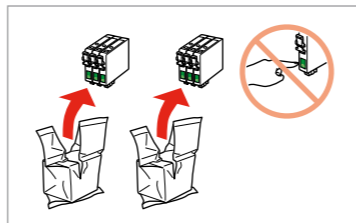
For the initial setup, make sure you use the ink cartridges that came with this printer.

1



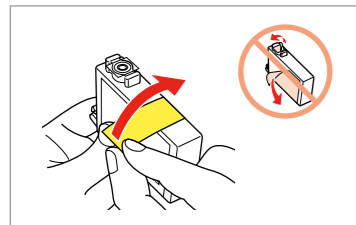
Open.

2



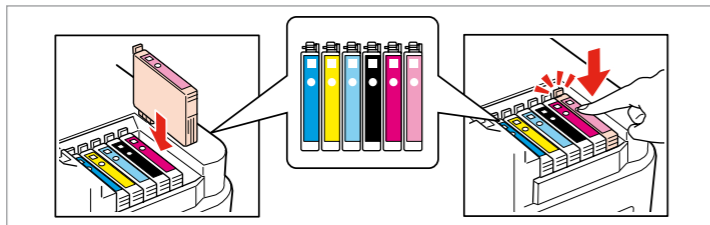
Unpack.

3



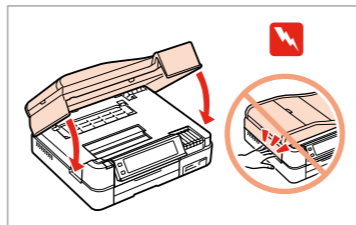
Remove yellow tape.

4



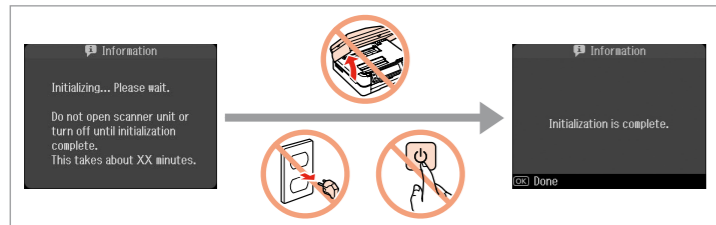
Install.

5



Close.

6

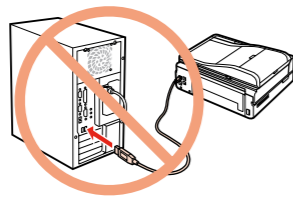


Wait.

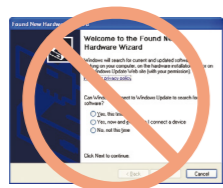
The initial ink cartridges will be partly used to charge the print head. These cartridges may print fewer pages compared to subsequent ink cartridges.

Installing the Software

4

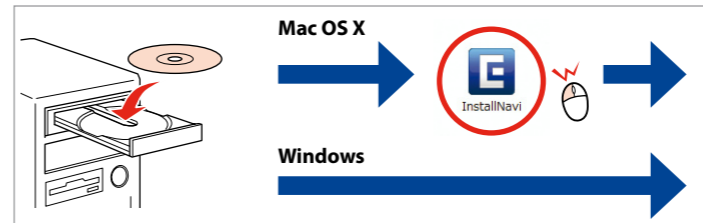


Do not connect the USB cable until you are instructed to do so.



If this screen appears, click **Cancel**.

1

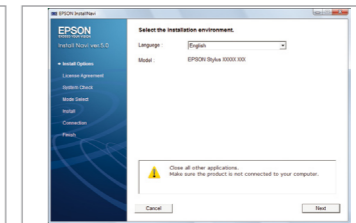


Insert.

Windows: No installation screen? → Double-click the icon.

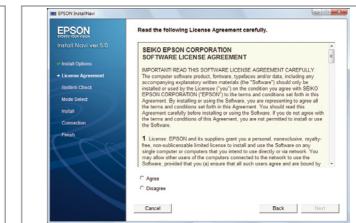


2



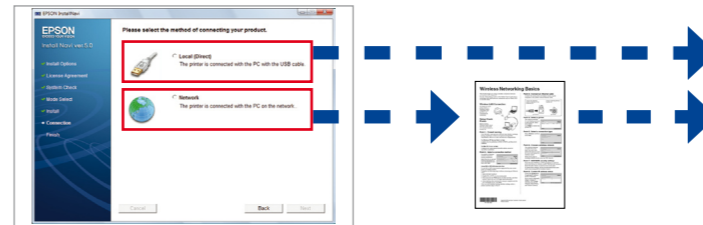
Select a language.

3



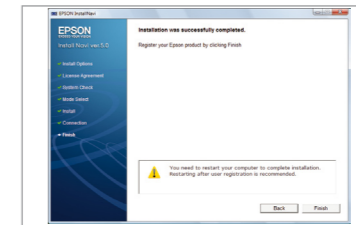
Follow the instructions.

4



Select a connection type and follow the instructions.

5



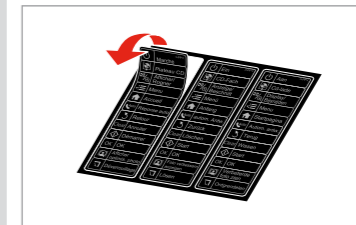
Installation complete.

Attaching Panel Supplement Sticker

5

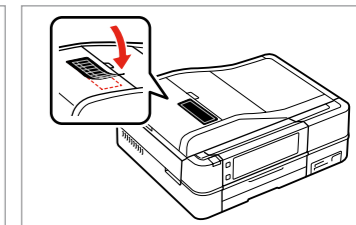
Depending on the location, the supplementary stickers may not be available.

1



Peel off.

2



Stick.

Getting More Information



Basic Operation Guide



Fax Guide



User's Guide