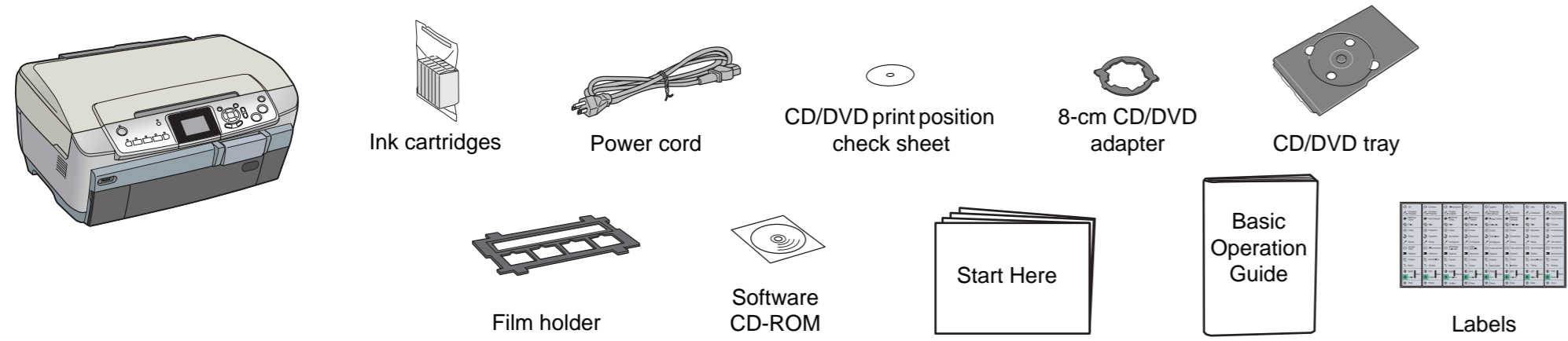


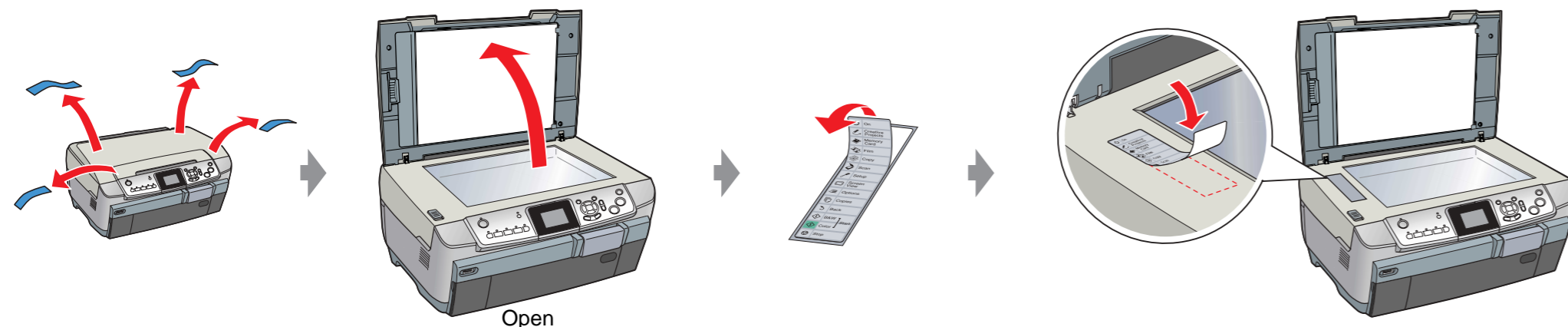
Start Here

EPSON STYLUS™ PHOTO RX700 Series

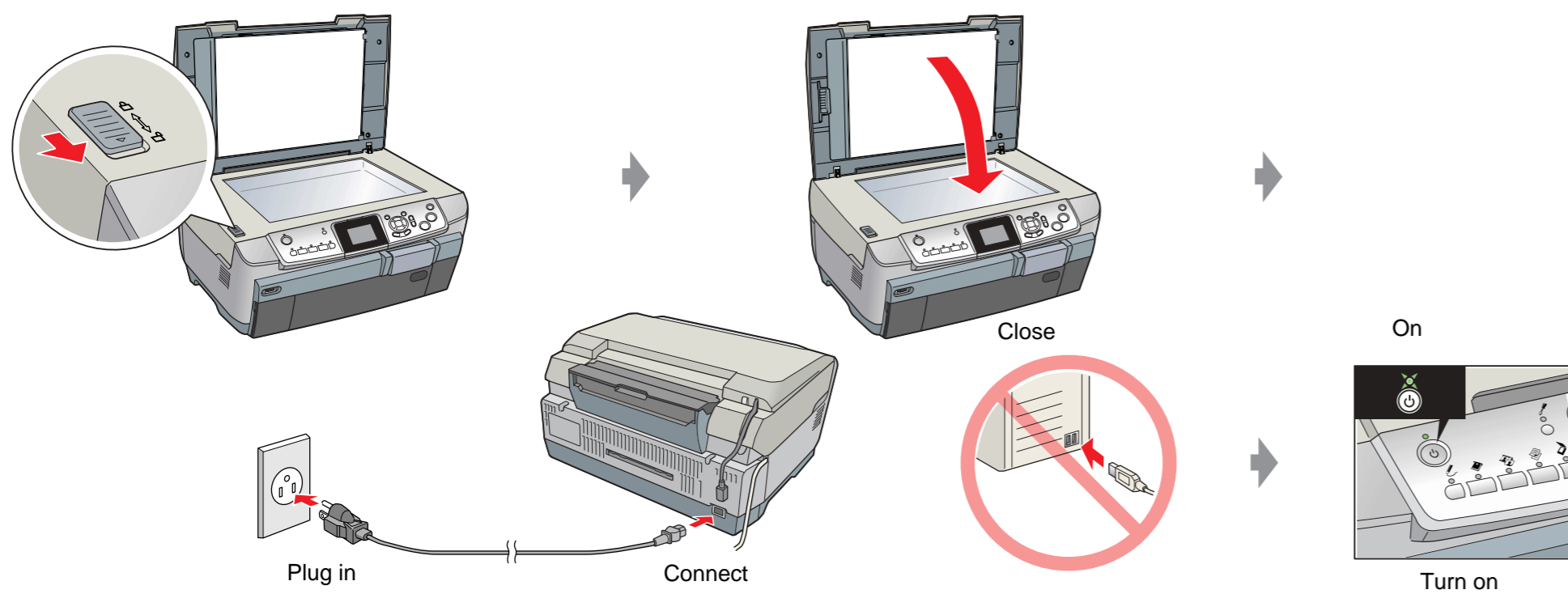
1. Unpacking



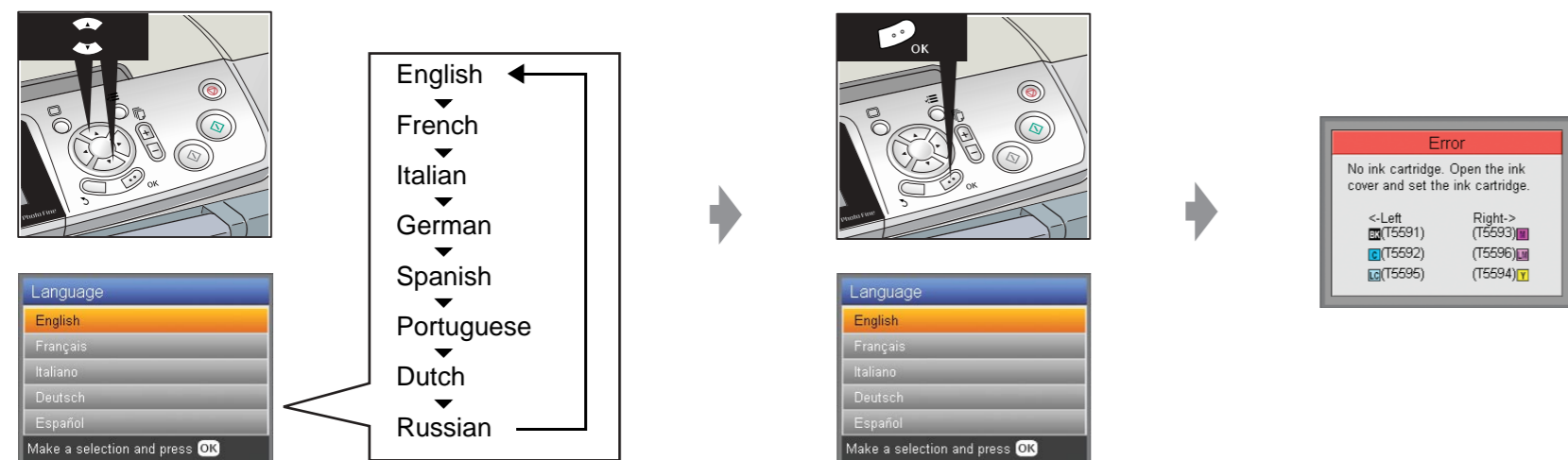
2. Removing All Tape and Applying the Label



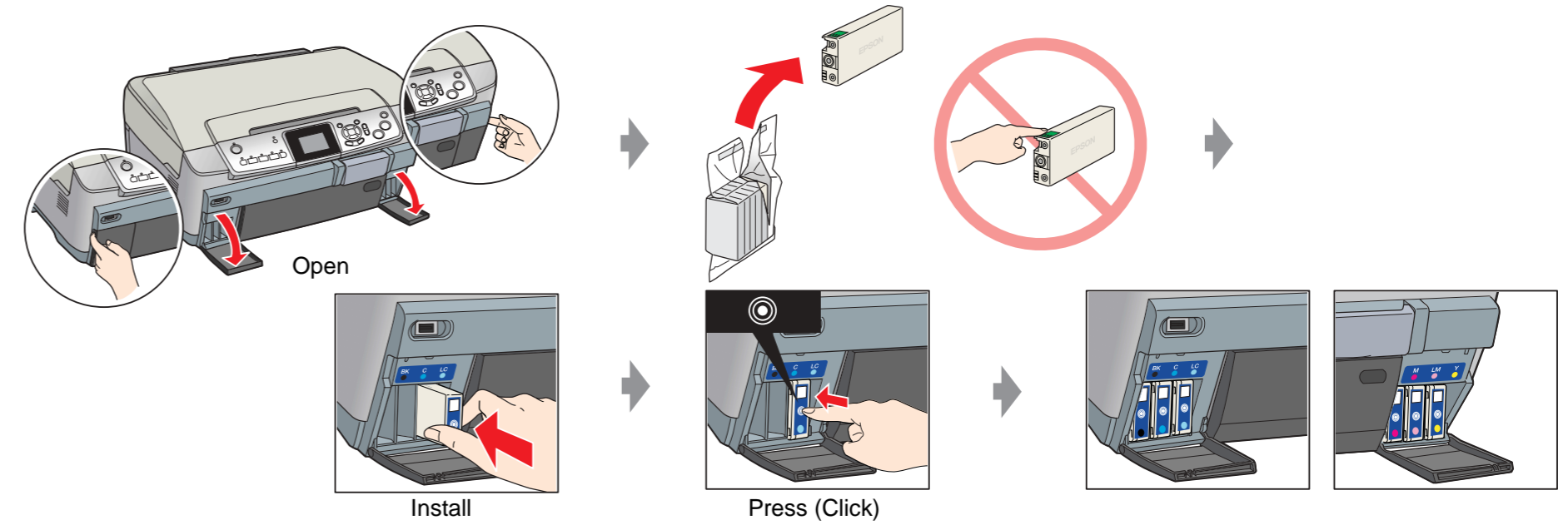
3. Unlocking and Turning On



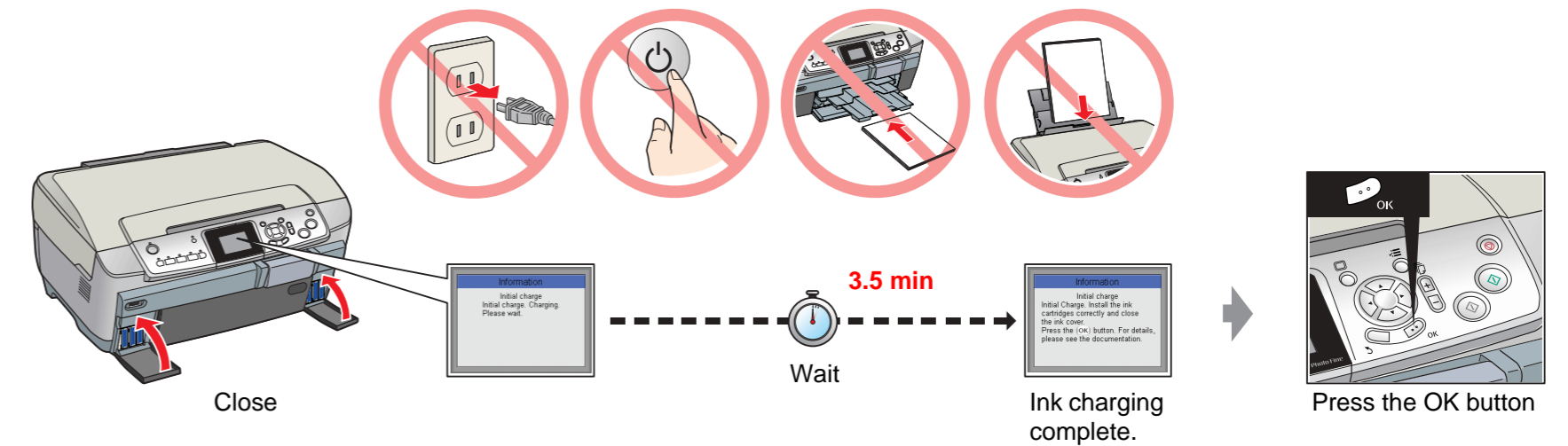
4. Selecting a Language



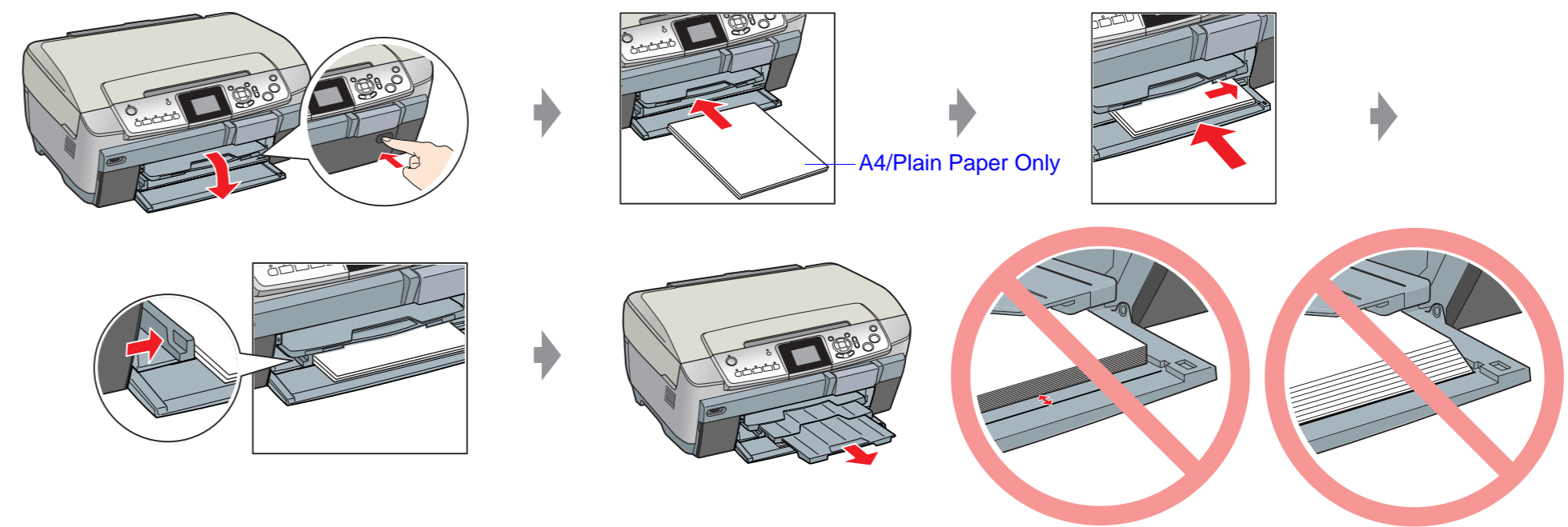
5. Installing Ink Cartridges



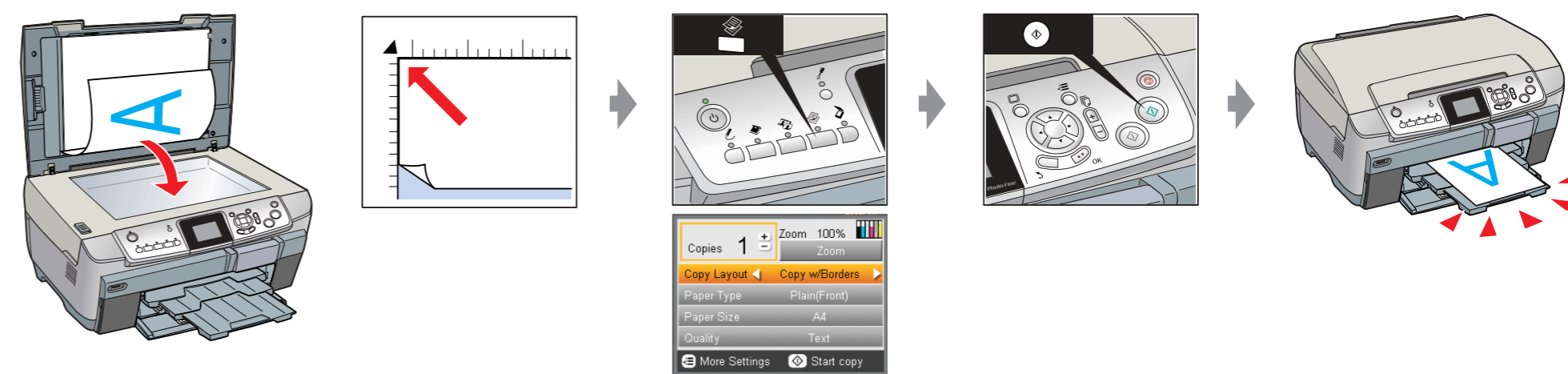
6. Ink Charging



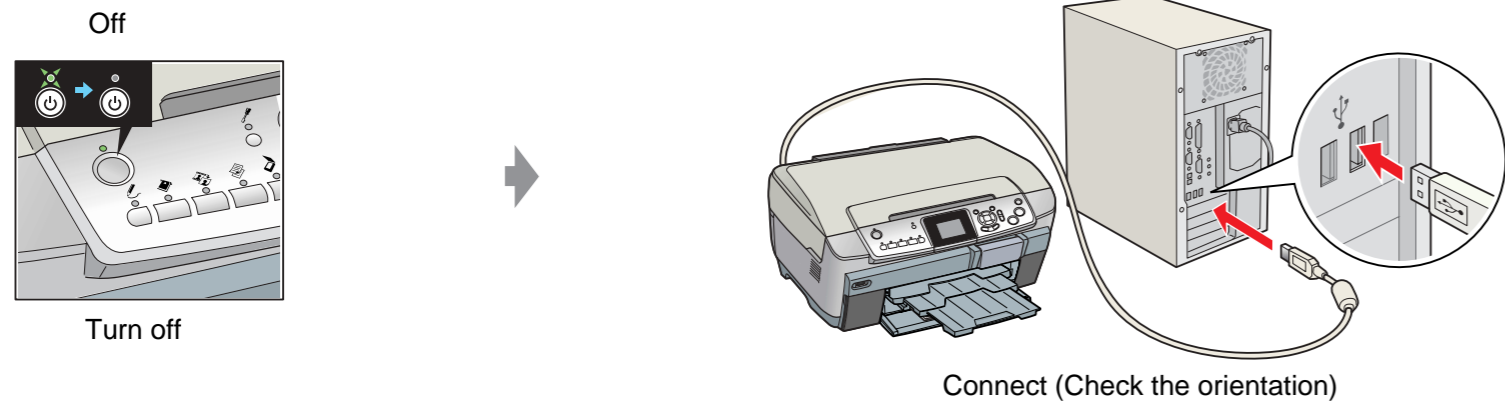
7. Loading Paper



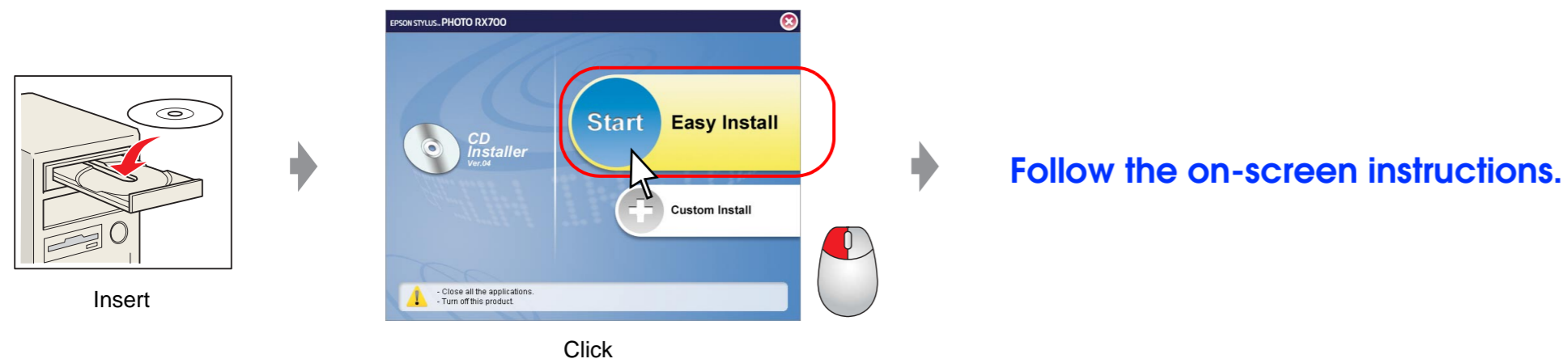
8. Making a Test Copy



9. Connecting to a Computer and Installing the Software



For Windows



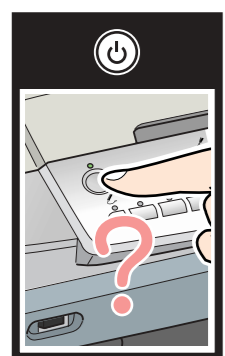
❑ If the installer dialog box does not appear, double-click the CD-ROM icon.

For Mac OS X

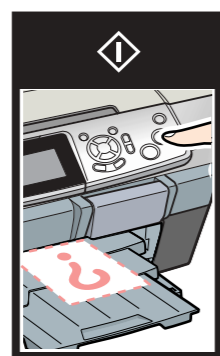


❑ For Mac OS 9 users: Access the following site to download the driver.
<http://tech.epson.com.au/downloads/downloads.asp>

Troubleshooting



Plug in the power cord securely.



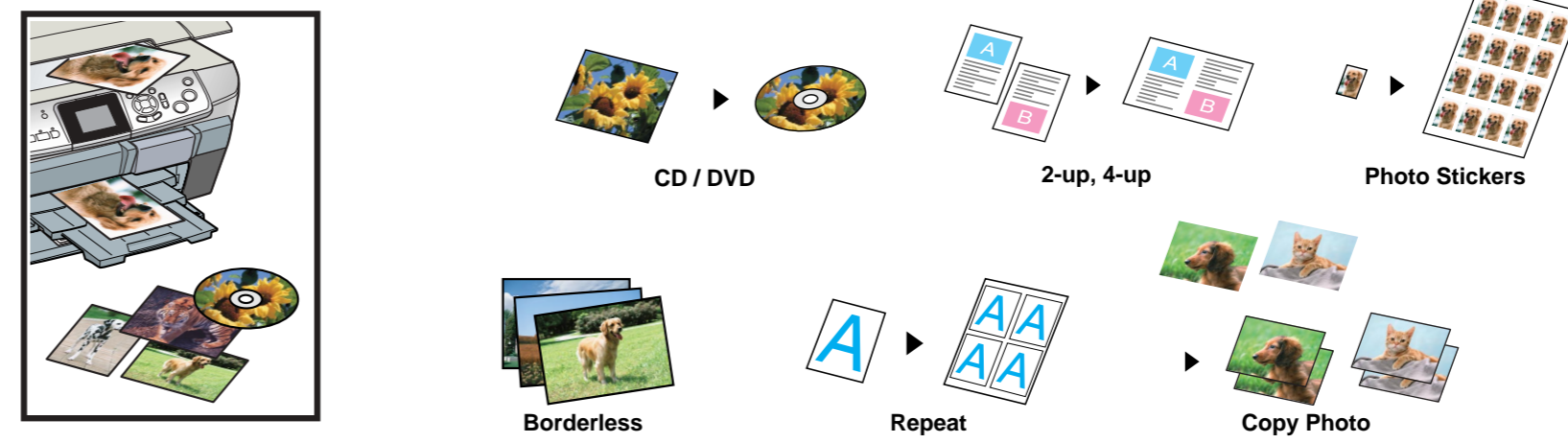
- ❑ Slide the transportation clamp to the unlocked position.
- ❑ Open the cartridge cover and make sure the ink cartridges were securely inserted until they clicked into place.
- ❑ Before loading the paper, remove the paper from the sheet feeder, Fan the stack of paper, then tap it on a flat surface to even the edges.



- ❑ Connect the USB cable correctly.
- ❑ Make sure that the printer driver and scanner driver have been installed correctly.

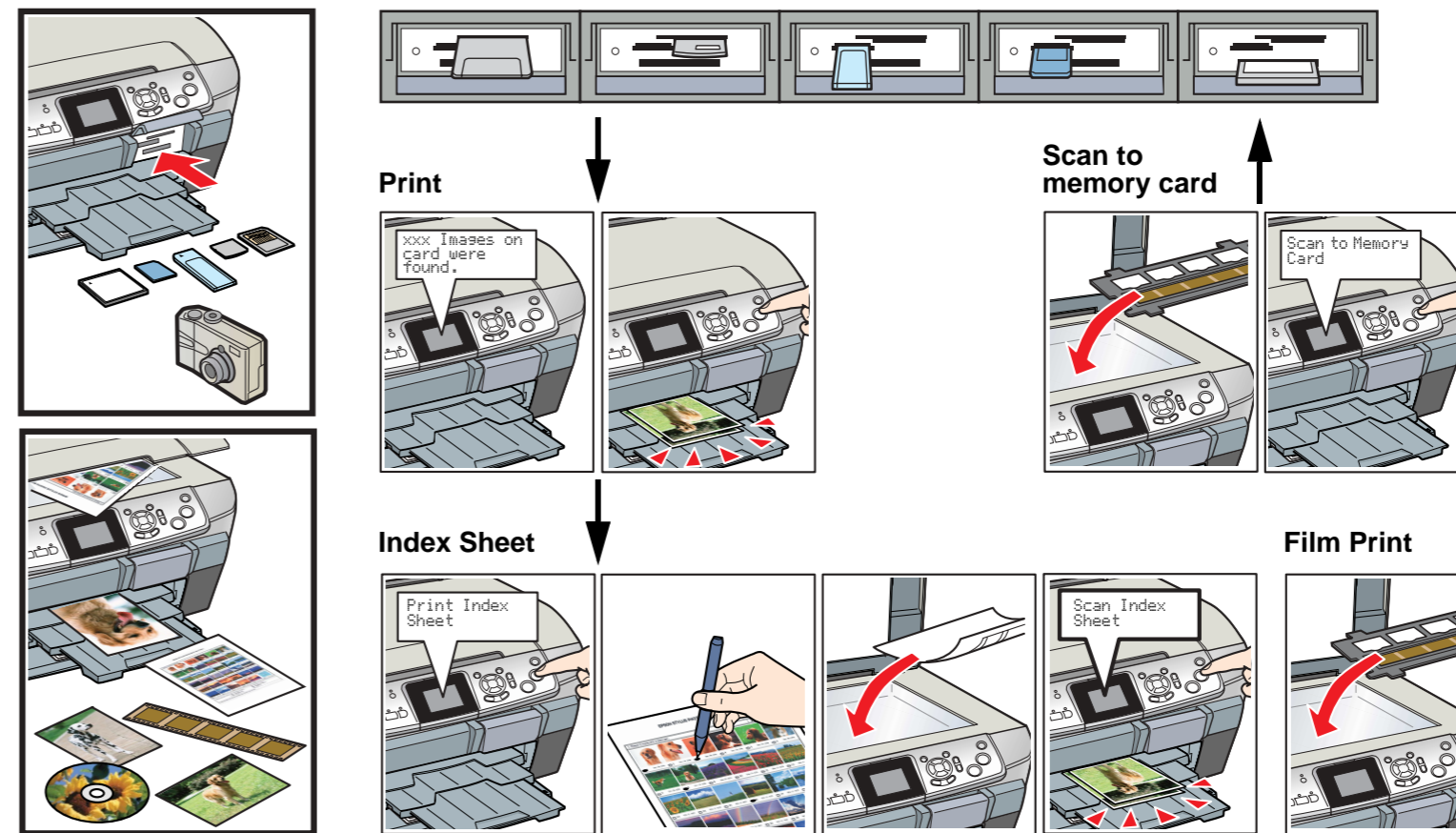
Features

Copying



For more information on using the copy functions, see the **Basic Operation Guide**.

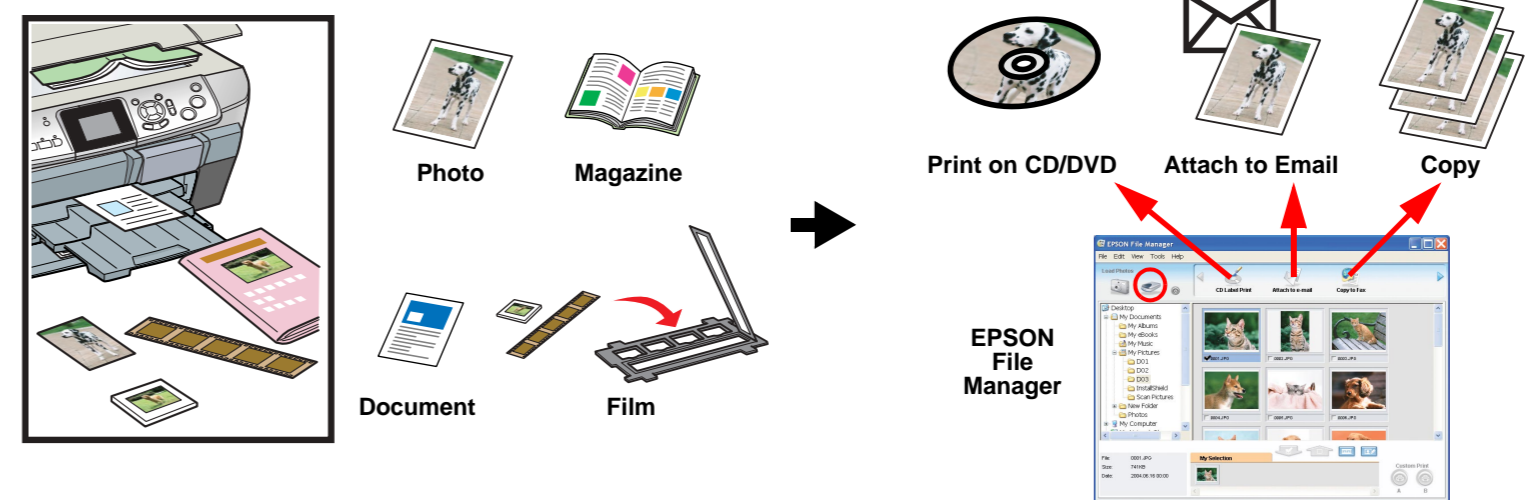
Direct Printing and Scanning



The built-in memory card slot allows you to do the following:

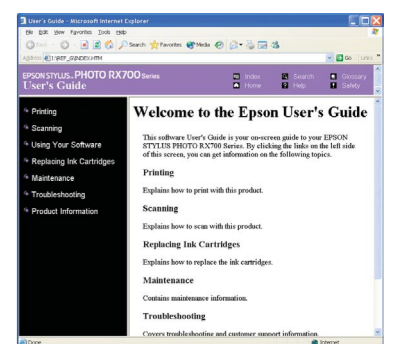
- ❑ Print directly from a memory card. (See the **Basic Operation Guide**.)
- ❑ Scan and save an image directly to a memory card. (See the **Basic Operation Guide**.)
- ❑ Transfer the data stored on a memory card to your computer. (See the online **User's Guide**.)

Scanning



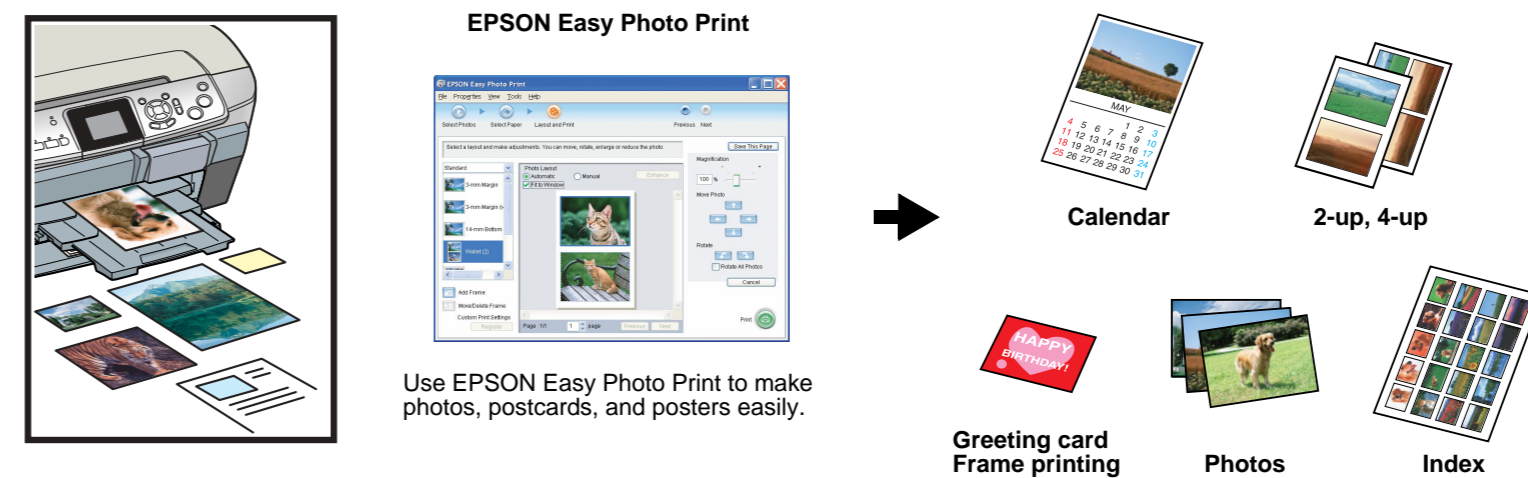
You can use EPSON File Manager to scan images quickly and easily, then attach them to e-mail, make copies, and so on.

Getting More Information



User's Guide

Printing



Use EPSON Easy Photo Print to make photos, postcards, and posters easily.