

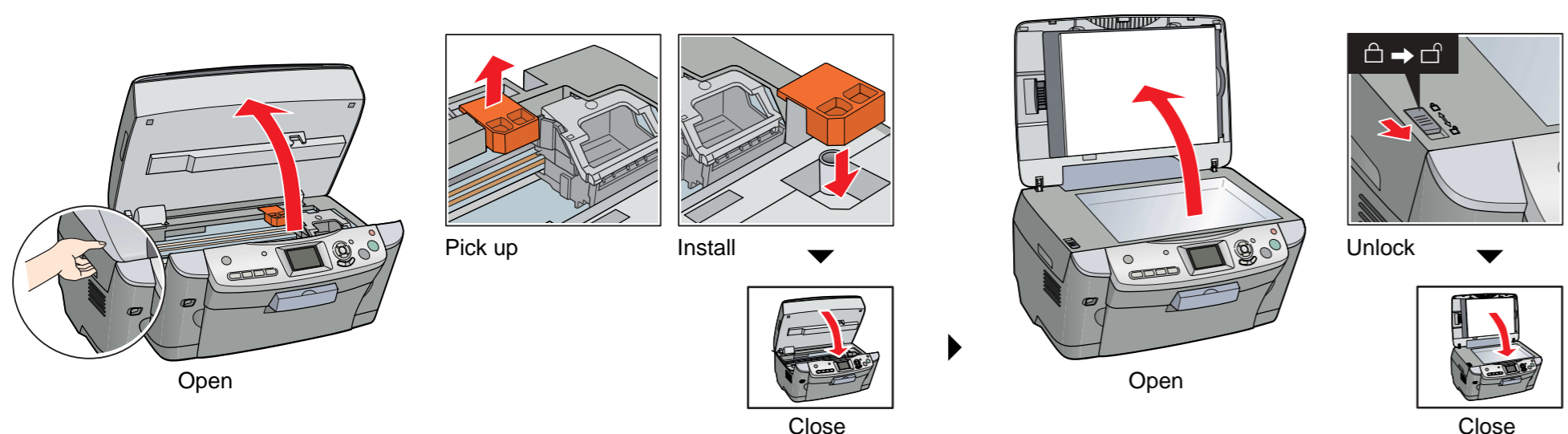
Setup Guide

4050559-00
XXXX

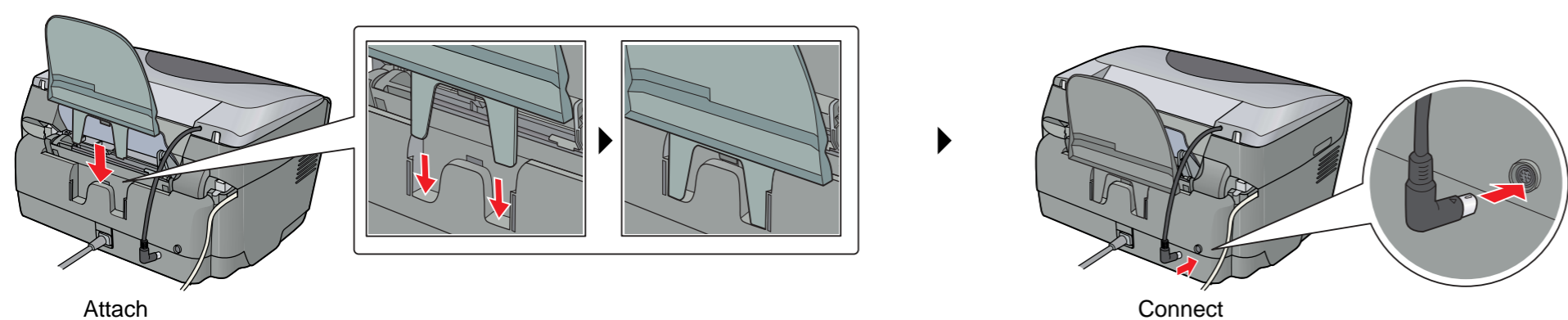
1. Unpacking



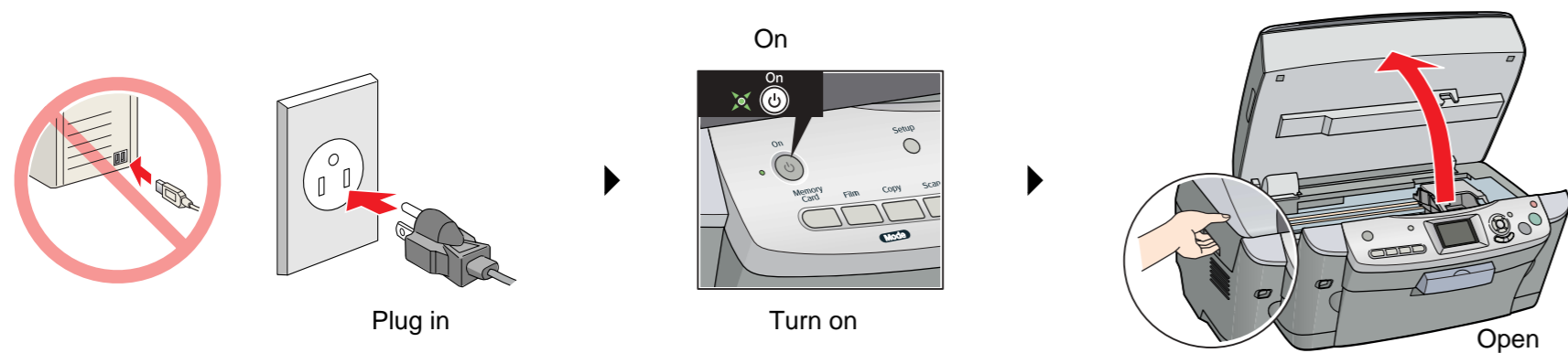
2. Removing Protective Materials and Unlocking



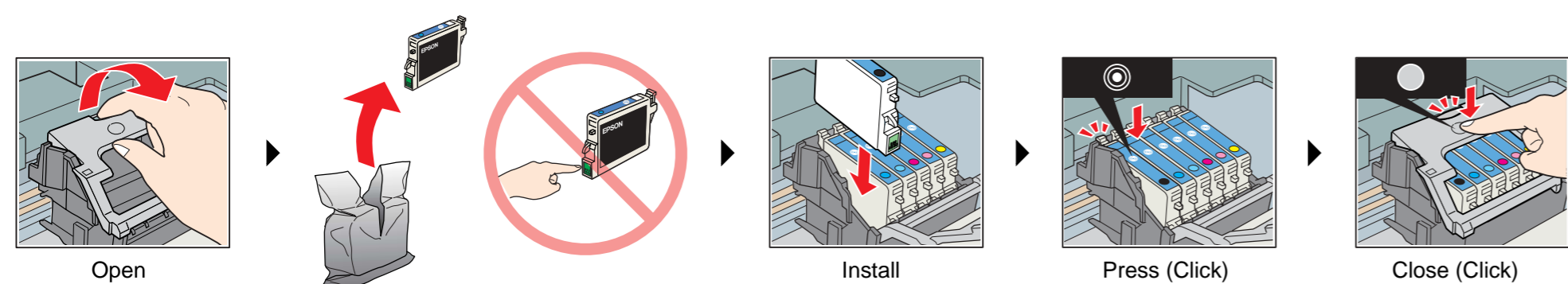
3. Attaching the Parts



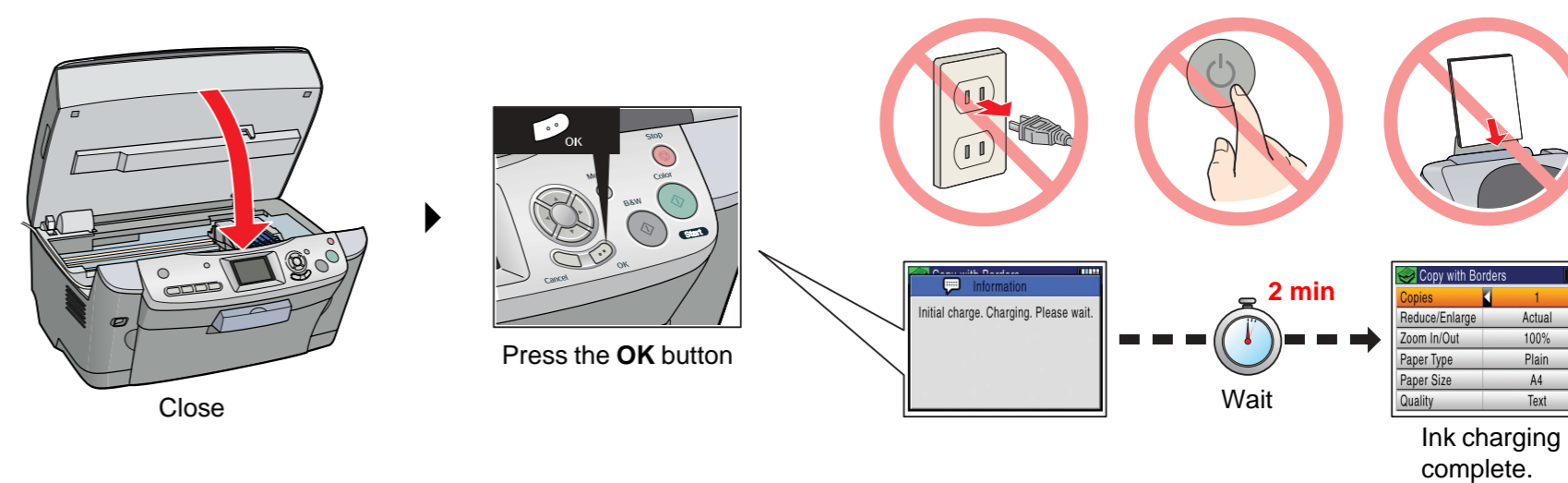
4. Turning On



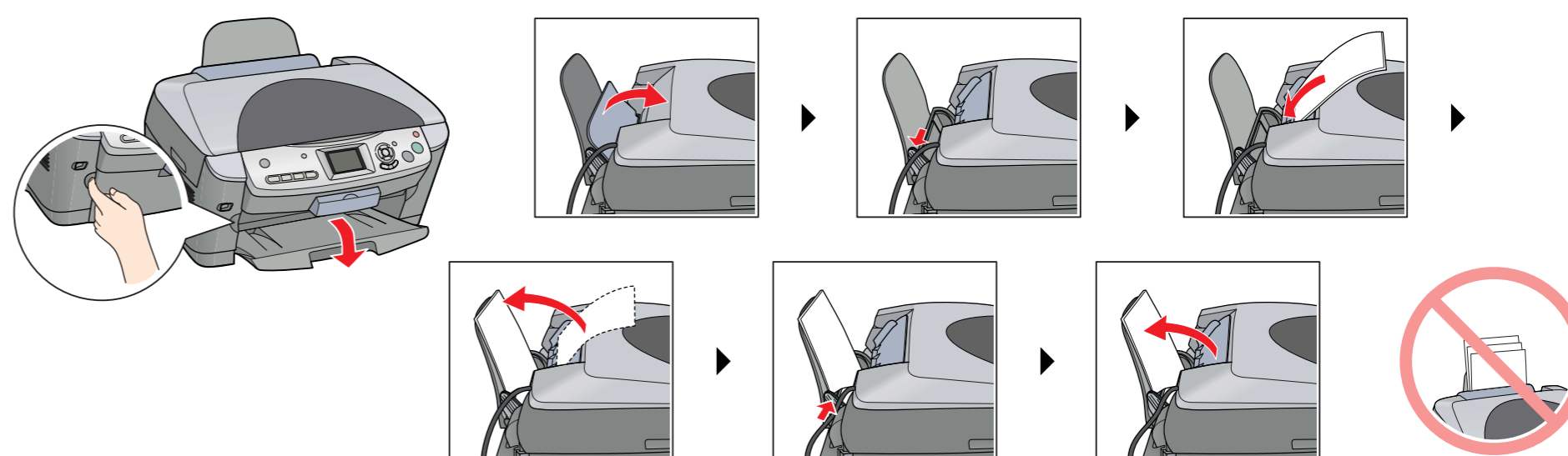
5. Installing Ink Cartridges



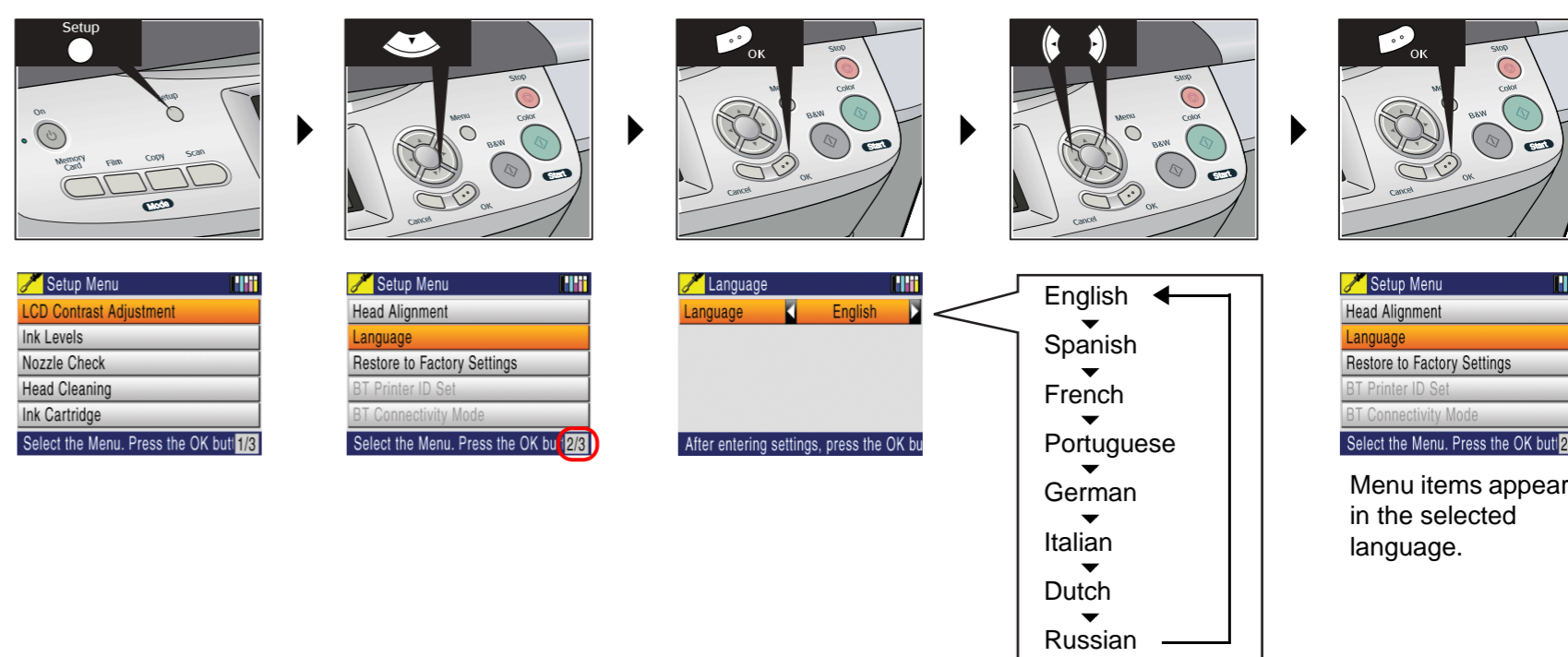
6. Ink Charging



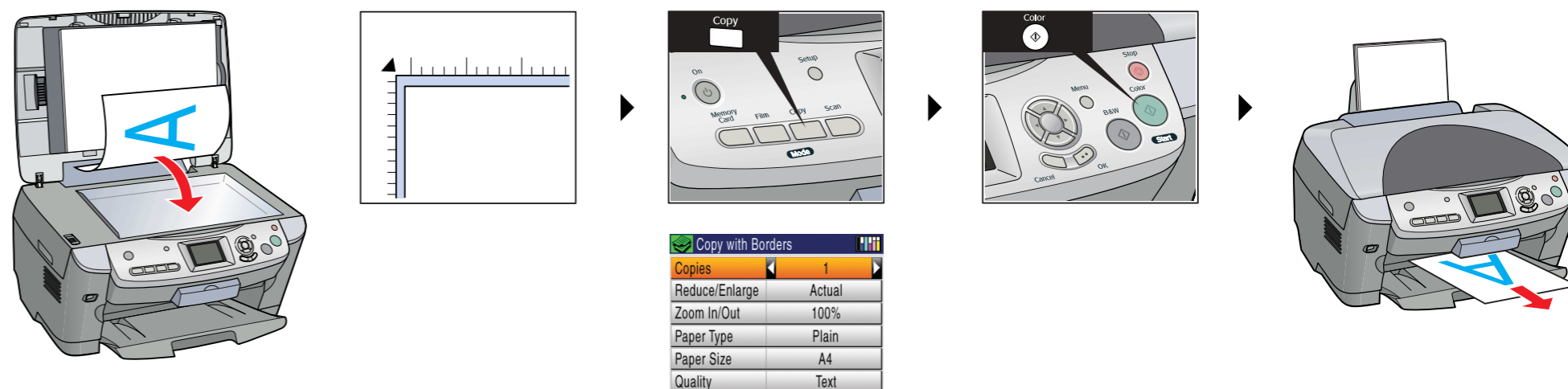
7. Loading Paper



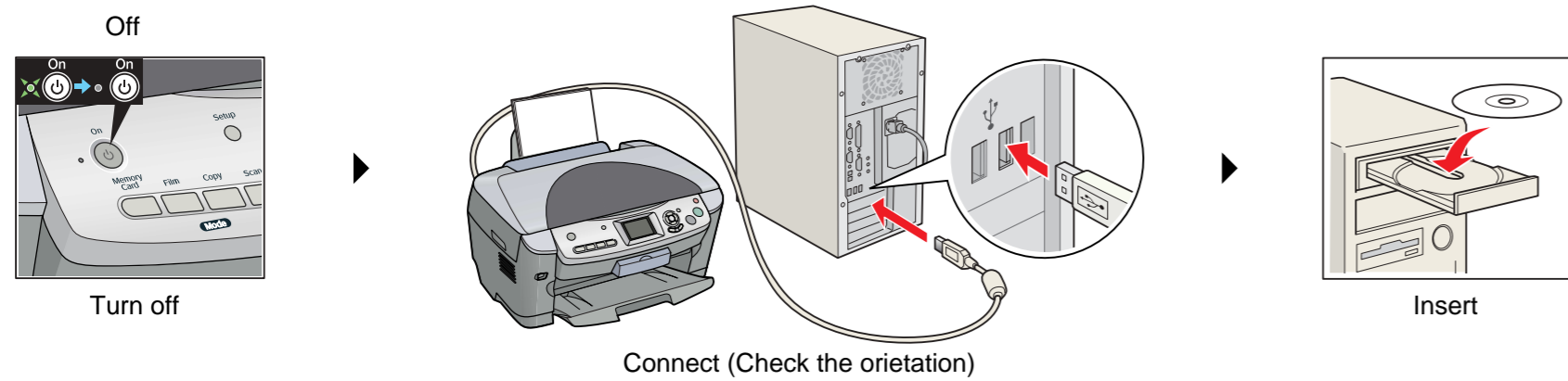
8. Selecting a Language



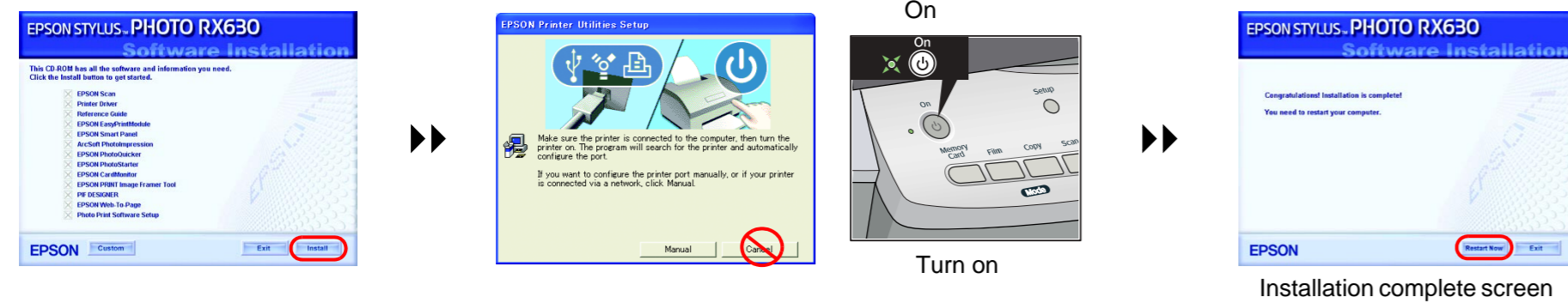
9. Making Copies



10. Connecting to a Computer and Installing the Software

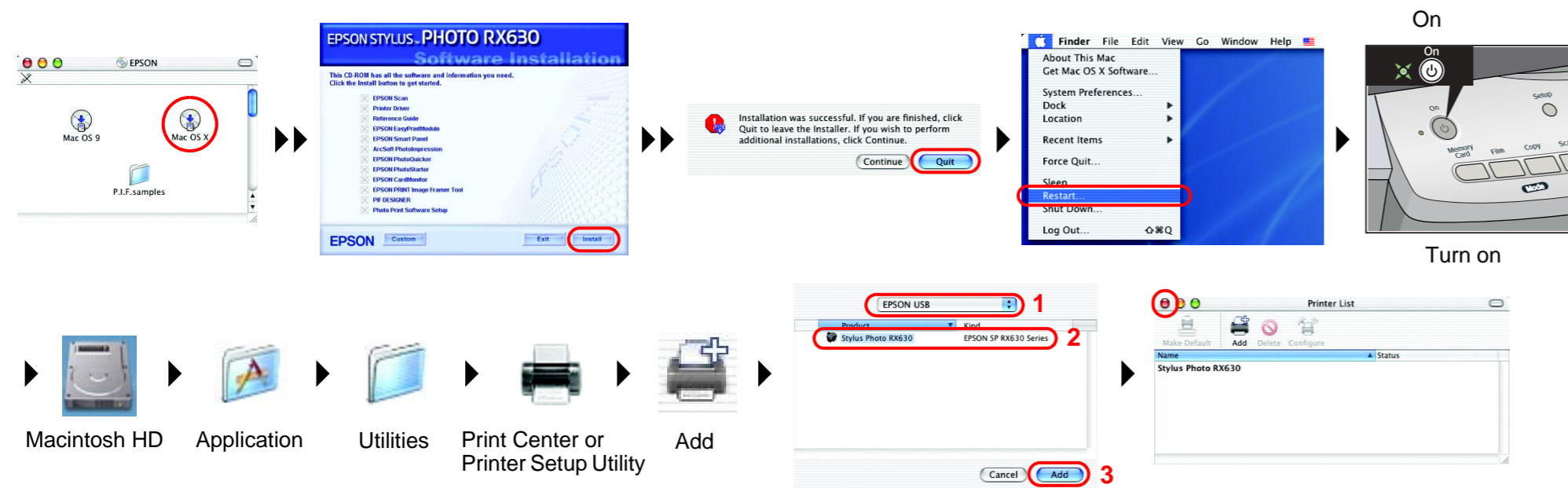


For Windows

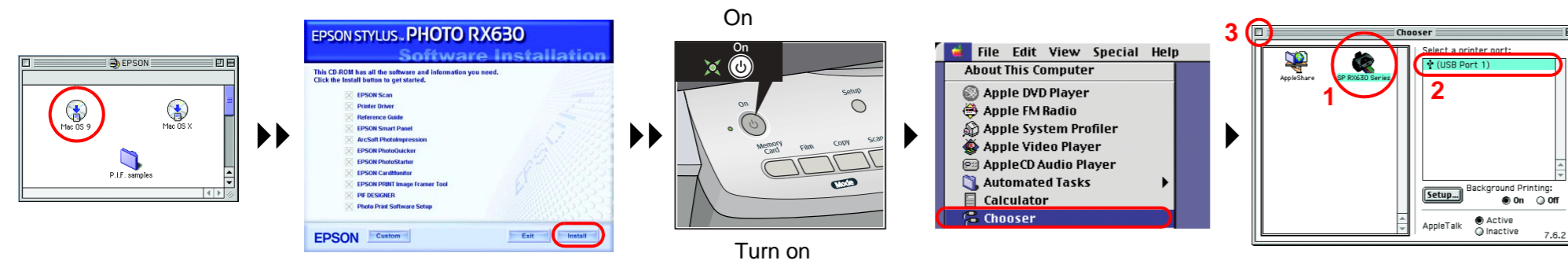


- ❑ If the installer dialog box does not appear, double-click CD-ROM icon.
- ❑ When the Installation complete screen appears, restart your computer to start using this product from your computer.

For Mac OS X



For Mac OS 9



Troubleshooting



Plug in the power cord securely.



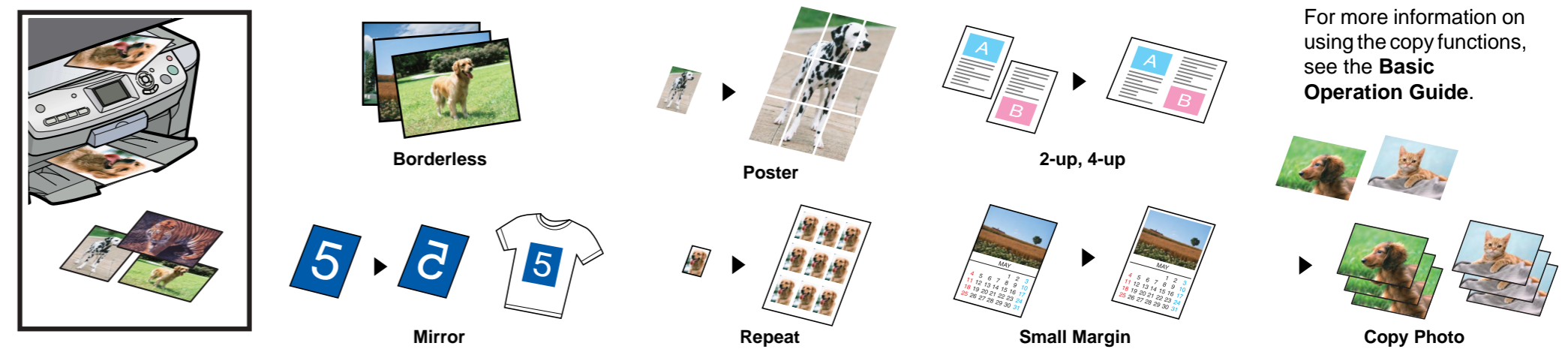
- ❑ Slide the transportation clamp to the unlocked position.
- ❑ Remove the protective material around the cartridge cover.
- ❑ Open the cartridge cover and make sure the ink cartridges were securely inserted until they clicked into place.
- ❑ Before loading the paper, remove the paper from the sheet feeder, fan the stack of paper, then tap it on a flat surface to even the edges.



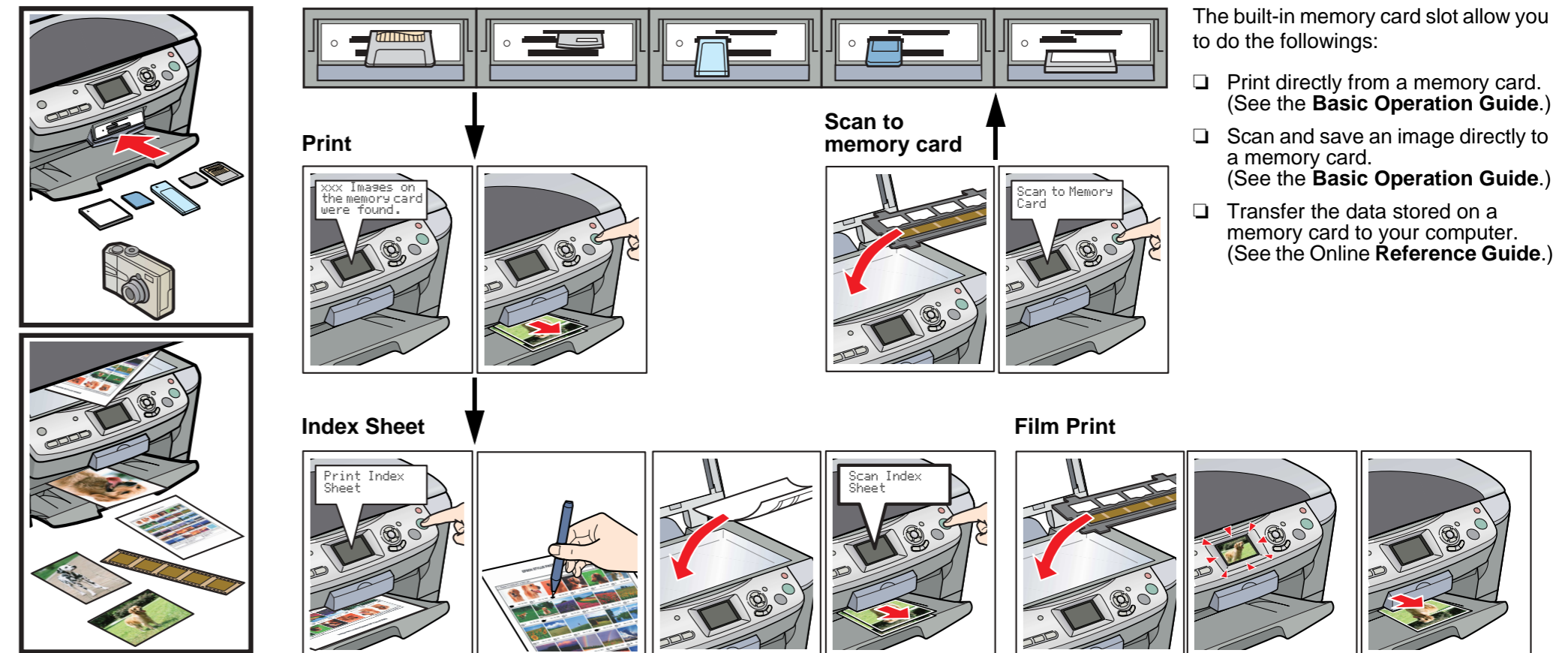
- ❑ Connect the USB cable correctly.
- ❑ Make sure that the printer driver and scanner driver have been installed correctly.

Features

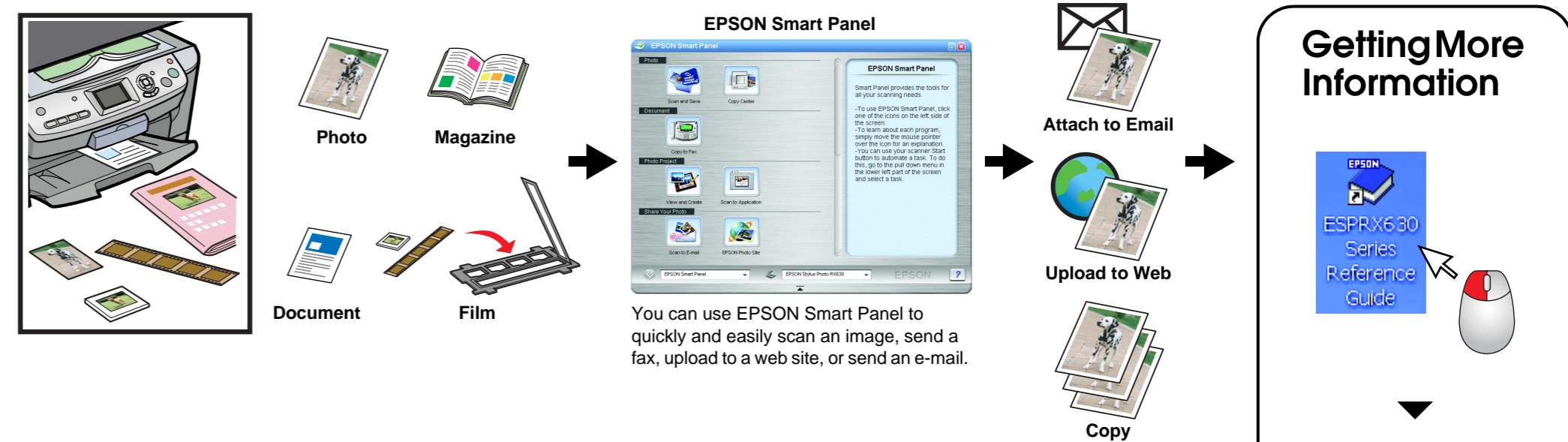
Copying



Direct Printing and Scanning



Scanning



Printing

