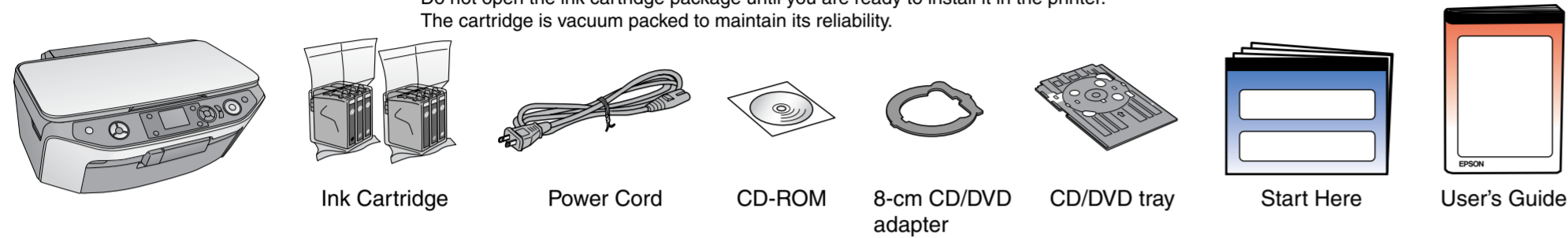


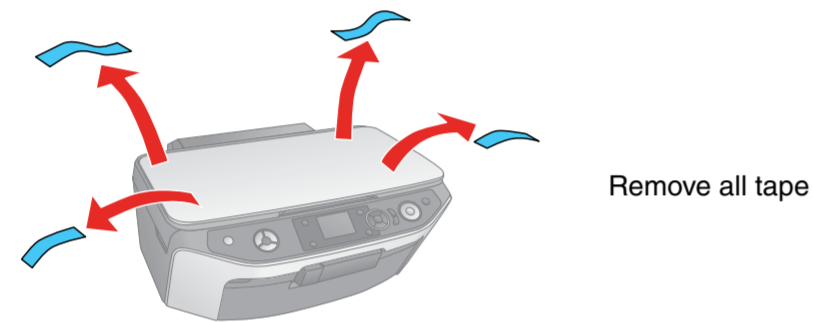
Start Here

1. Unpacking

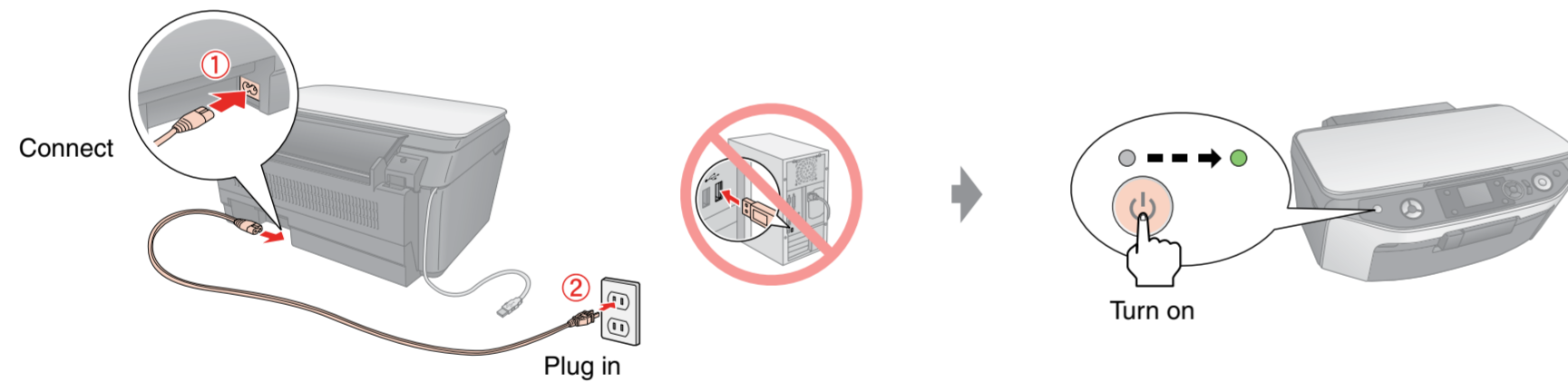
Note:
Do not open the ink cartridge package until you are ready to install it in the printer.
The cartridge is vacuum packed to maintain its reliability.



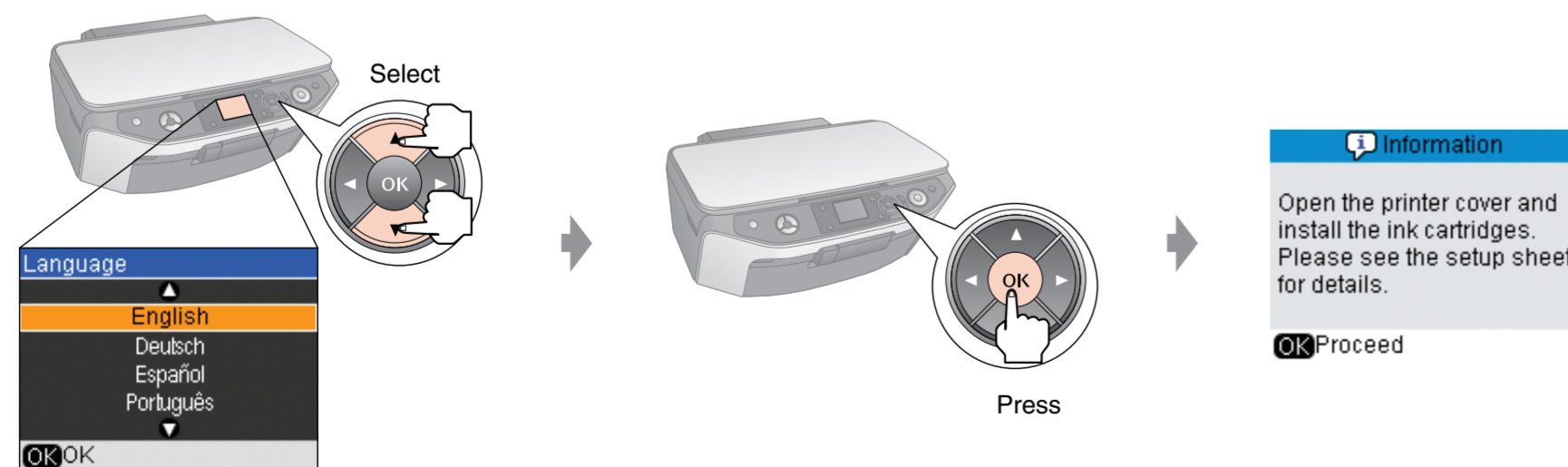
2. Removing Protective Tape



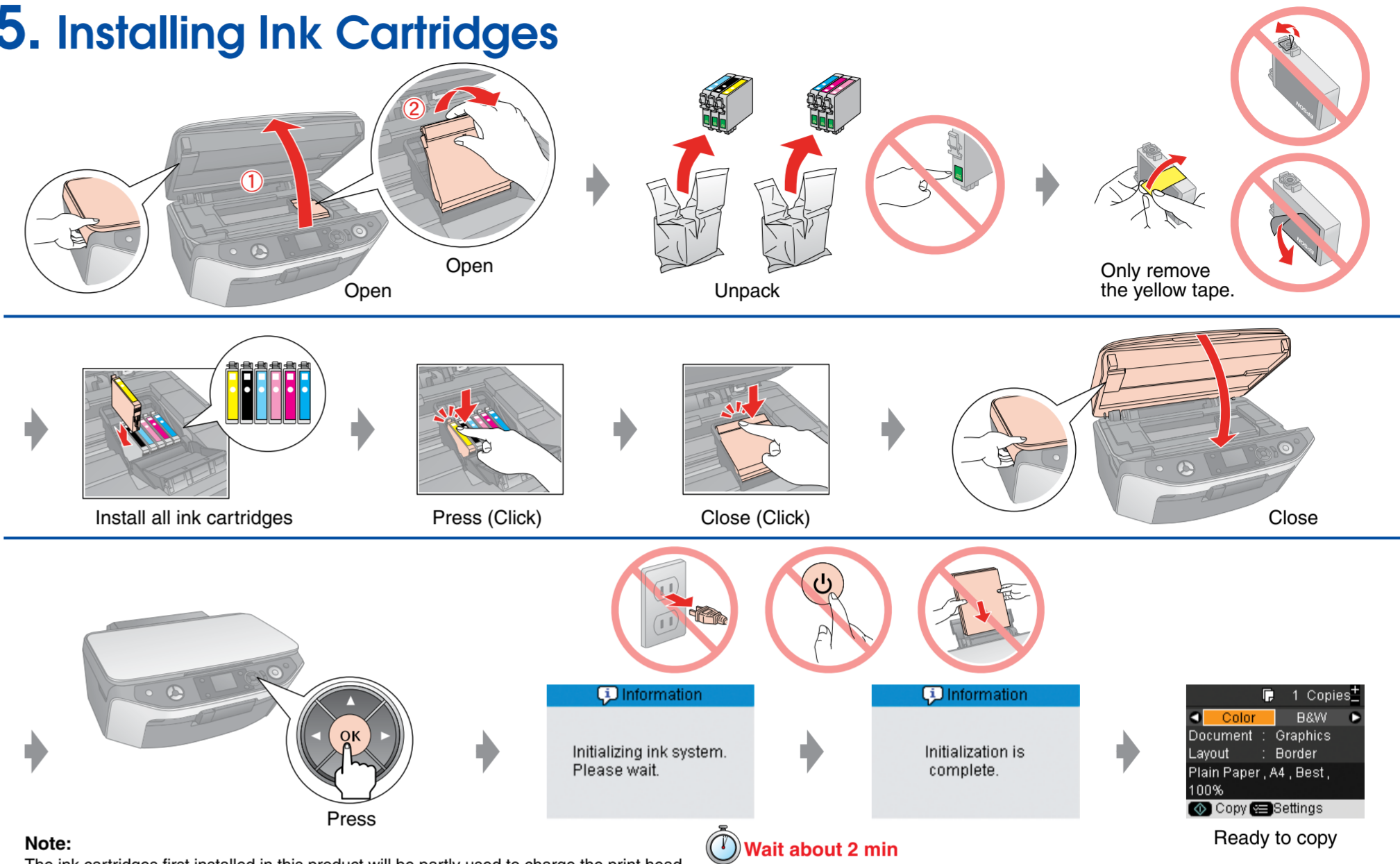
3. Turning On



4. Selecting a Language



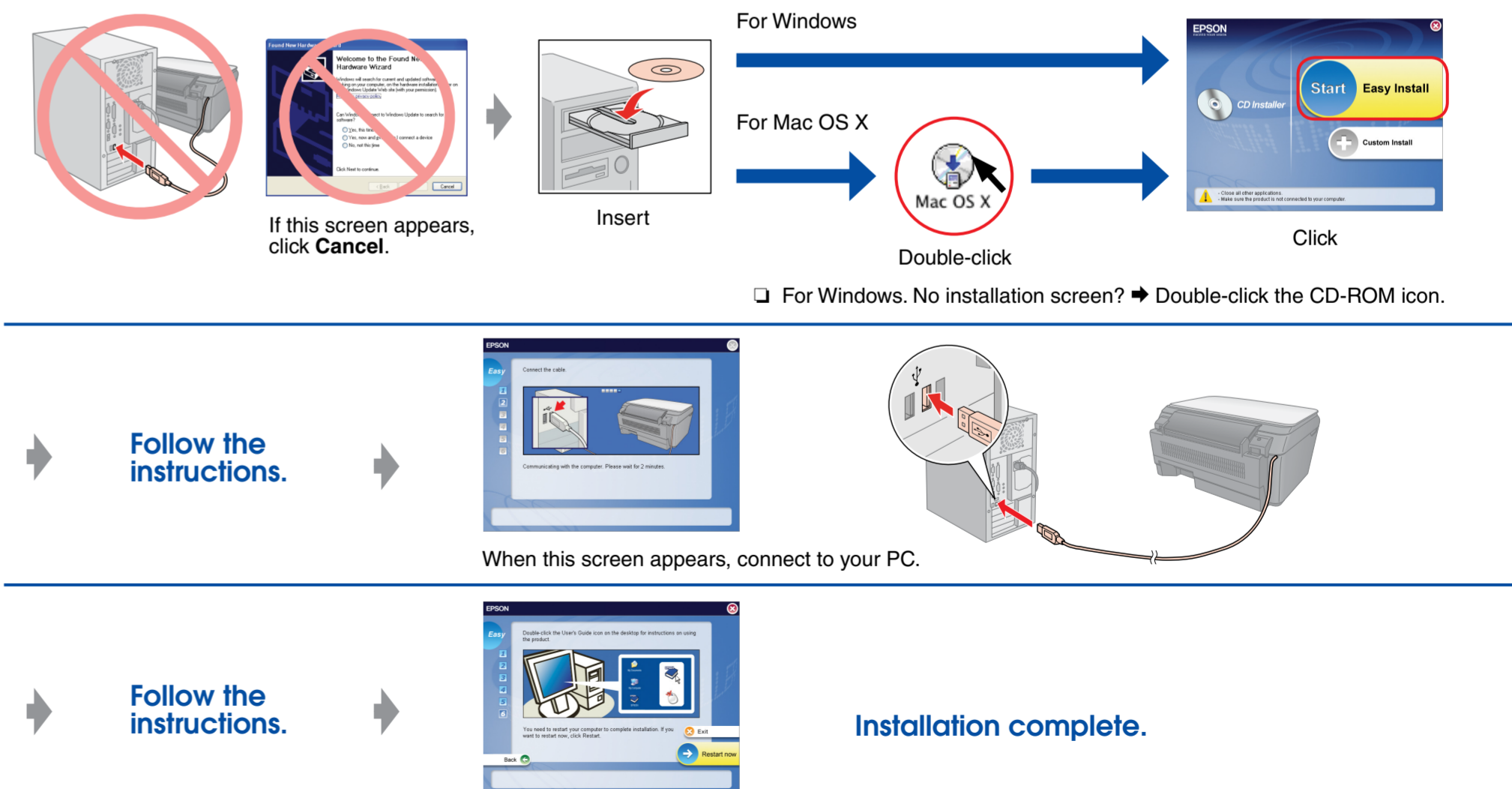
5. Installing Ink Cartridges



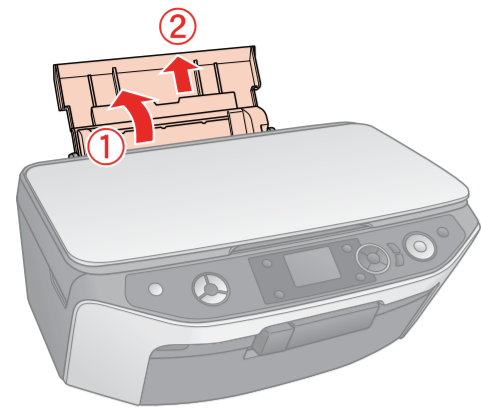
Note:
The ink cartridges first installed in this product will be partly used to charge the print head. Subsequent ink cartridges will last for their full rated life.

6. Installing the Software

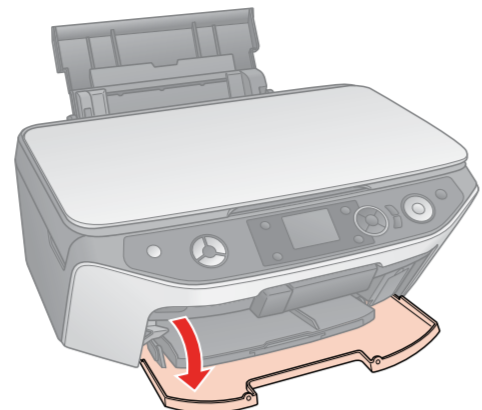
Do not connect the USB cable until you are instructed to do so.



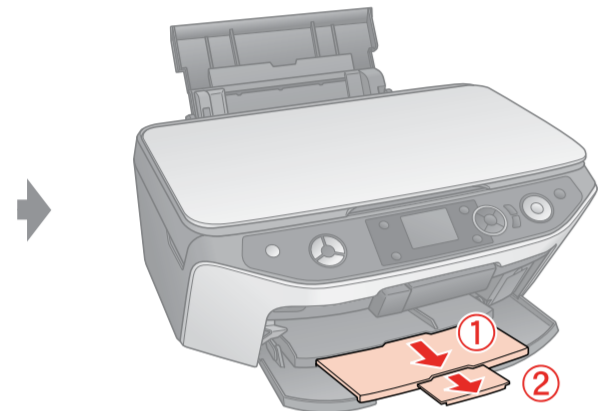
Loading Paper



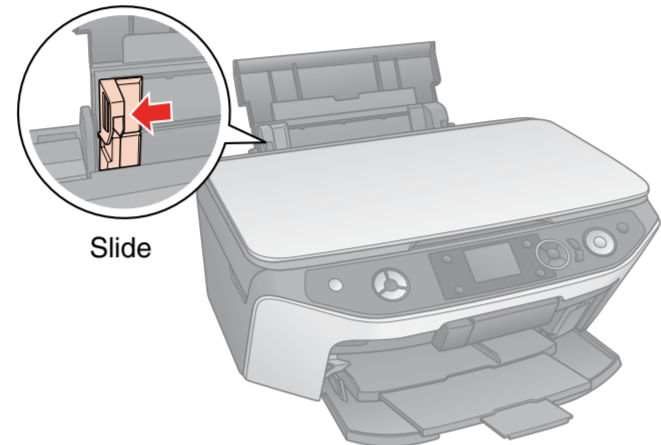
Open and pull out



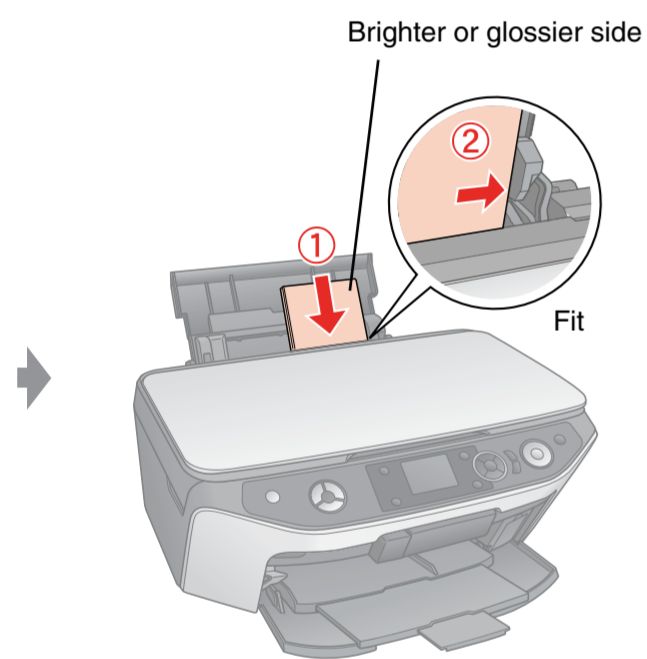
Open



Pull out

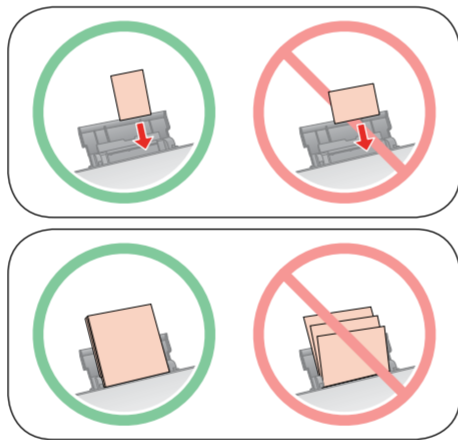
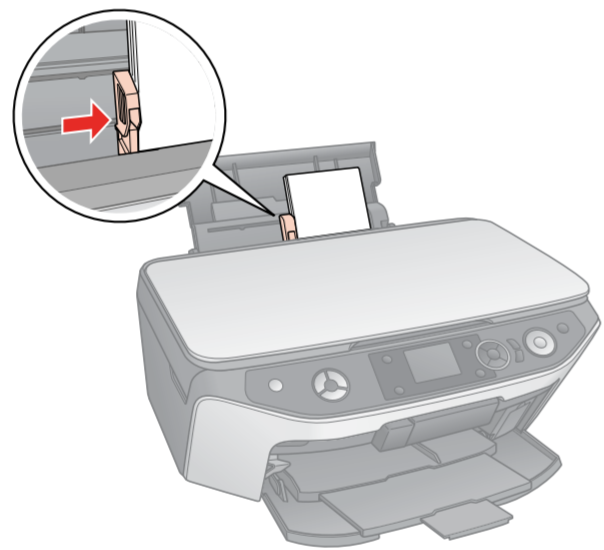


Slide

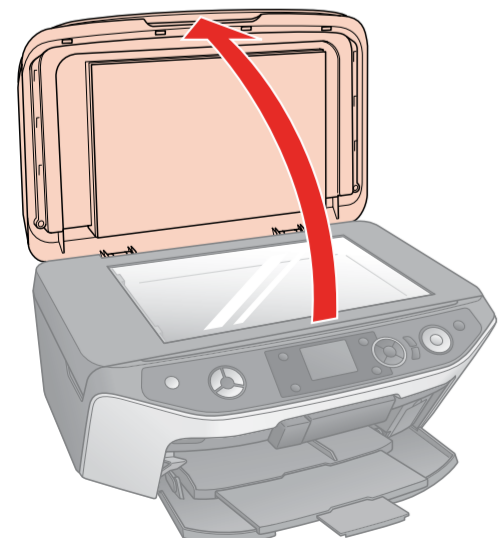


Brighter or glossier side

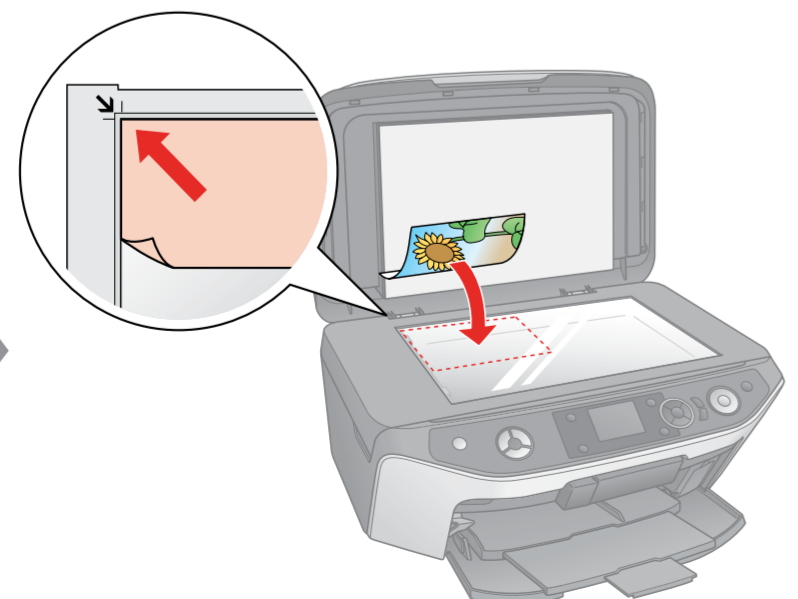
Fit



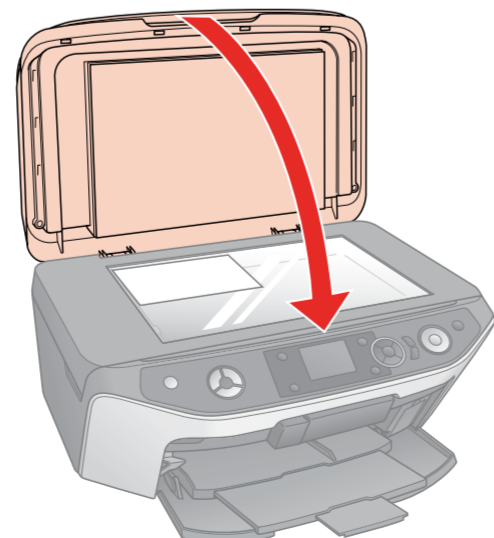
Placing an Original



Open



Place an original

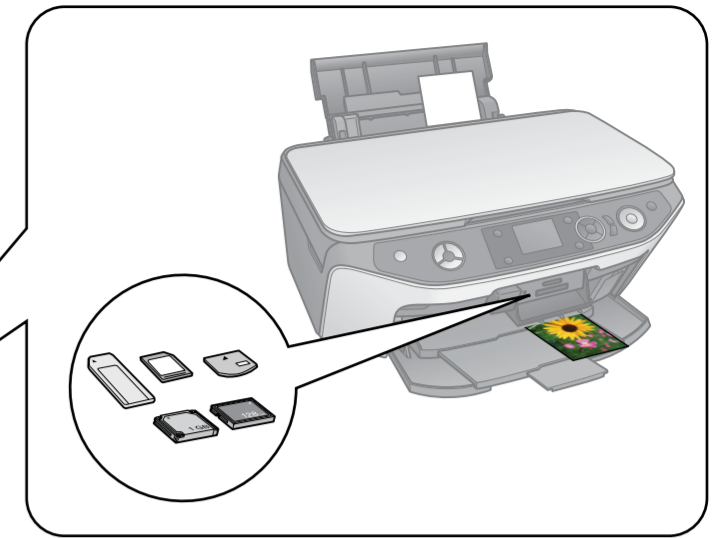


Close

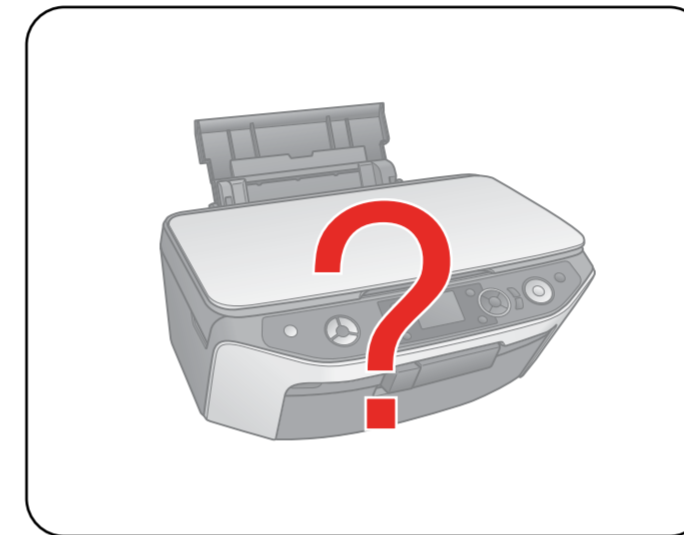
Getting More Information



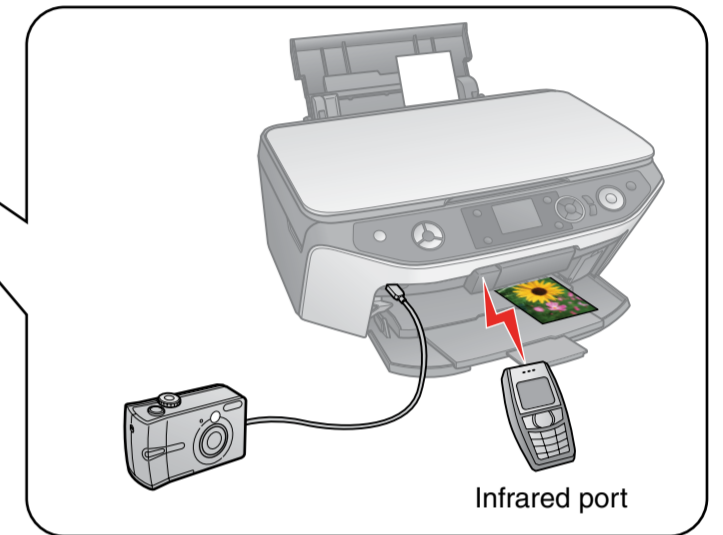
Copying



Printing from a Memory Card



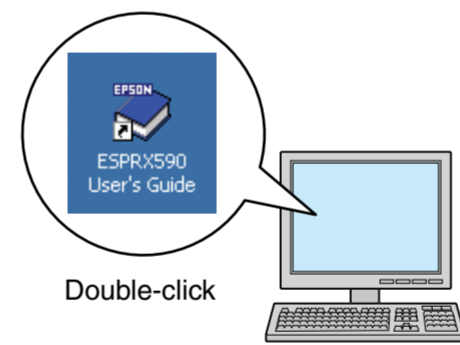
Troubleshooting



Printing from a Camera/
Mobile Phone



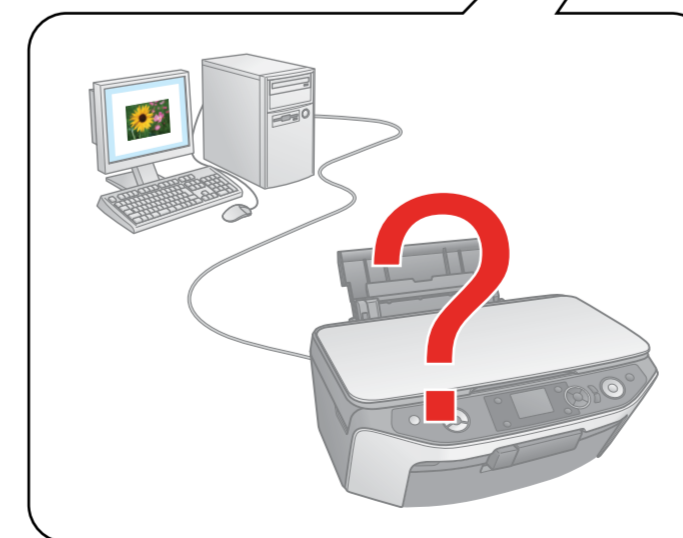
User's Guide
(for use with a computer)



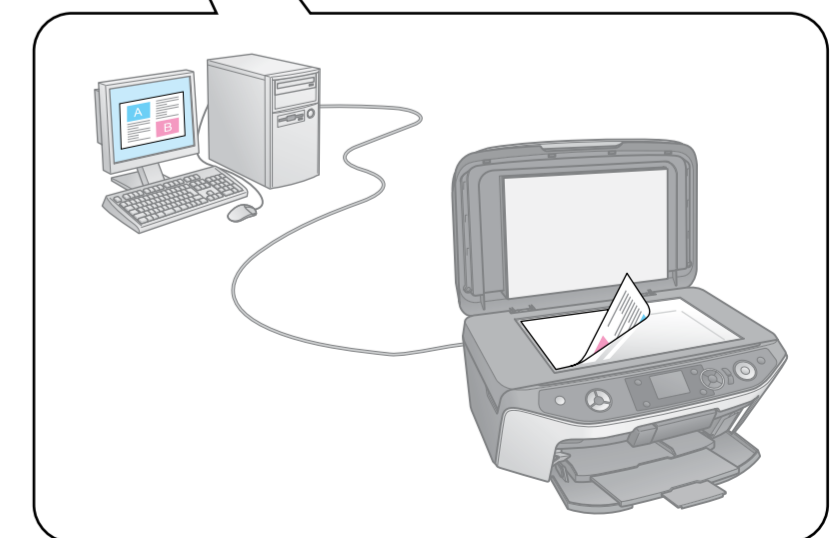
Double-click



Printing with a PC/About the
Bluetooth Photo Print Adapter



Troubleshooting



Scanning