

# EPSON

## EPSON STYLUS™ PHOTO RX510

# Setup

4047356-00  
XXX

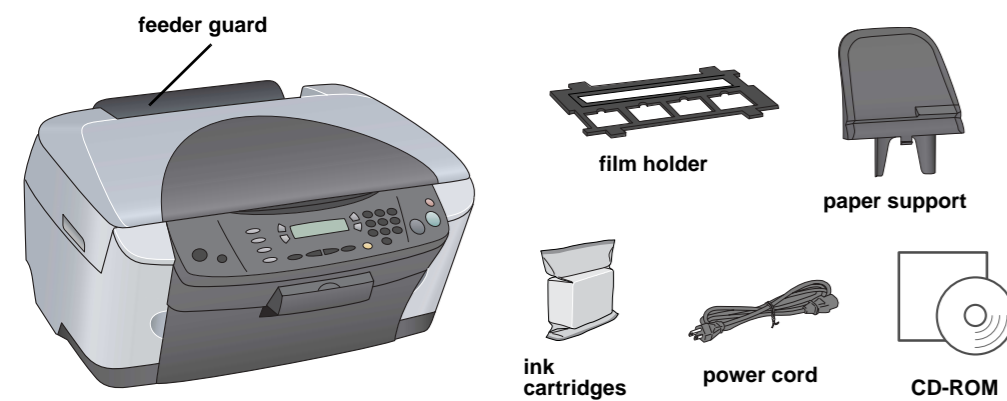
### Cautions and Notes

**Caution:** Cautions must be observed to avoid damage to your equipment.

**Notes:** Notes contain important information and useful tips on the operation of this product.

## 1 Unpacking

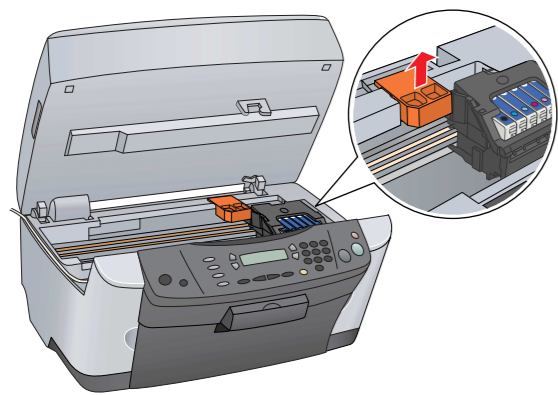
Make sure the following parts are included and not damaged.



The contents may vary in certain locations.  
The power cord comes attached in some countries.

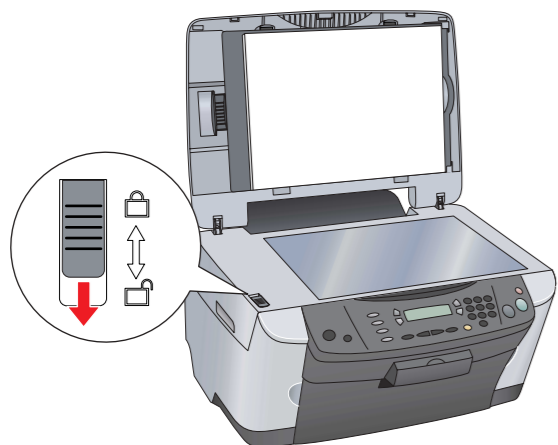
## 2 Removing Protect Material

Pick up the protective material and install it in the secure position following the Notice Sheet. Make sure the protective material around the ink cartridges are removed.



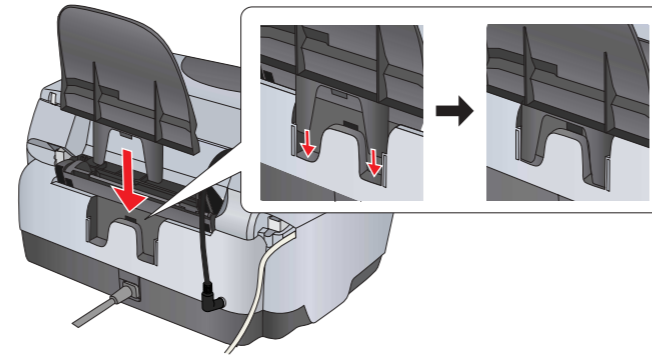
## 3 Unlocking

Open the document cover and slide the transportation lock lever.

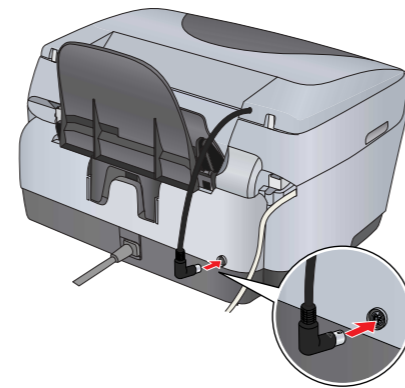


## 4 Attaching the Parts

1. Attach the paper support.



2. Connect the document cover's cable to the TPU interface connector.



## 5 Turning On

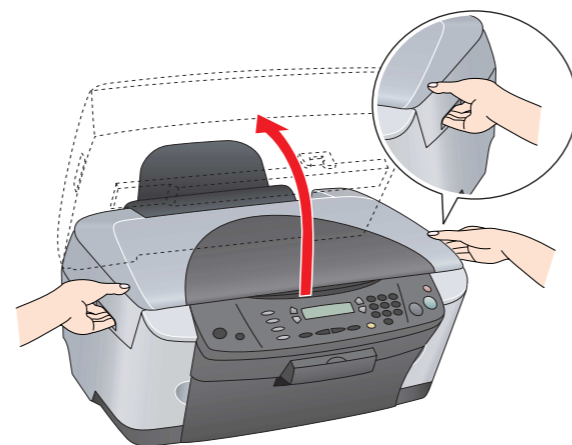
Plug in the power cord and press the On button to turn on this product.



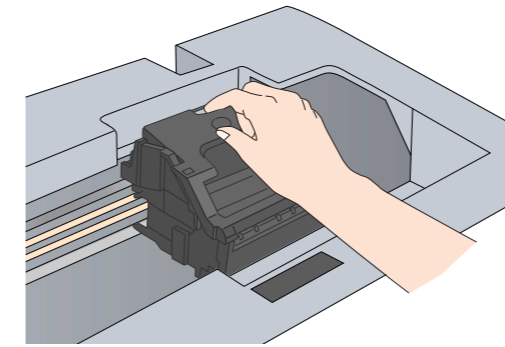
**Note:** Do not connect this product to your computer before step 10, or you will fail to install the software.

## 6 Installing Ink Cartridges

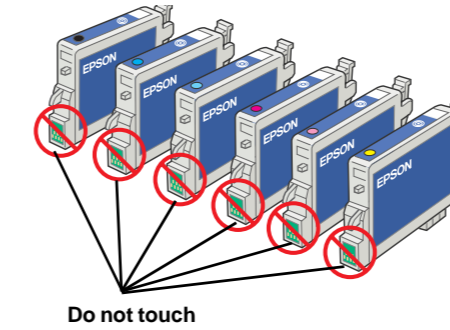
1. Open the scanner unit.



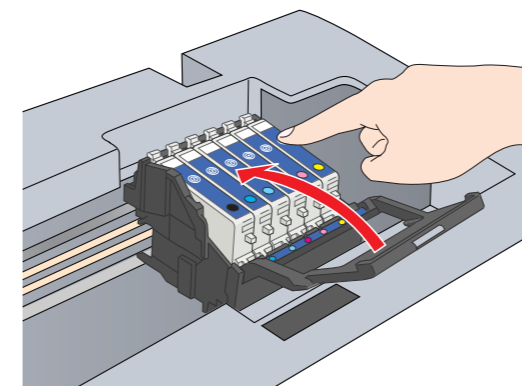
2. Open the cartridge cover.



3. Remove an ink cartridge from its package.

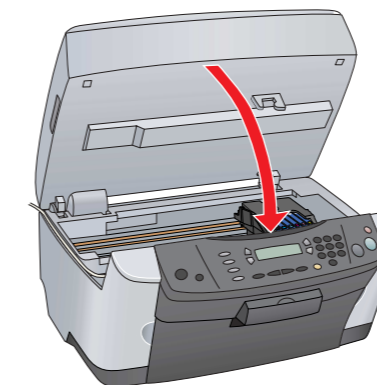


4. Place each cartridge into its holder. Then, push the ink cartridge down until it clicks into place and close the cartridge cover.



**Note:** Install all ink cartridges. This product does not work unless all cartridges are installed properly.

5. Lower the scanner unit.



Ink charging starts and it takes about two minutes to complete.

Initial charge... appears on the LCD panel and this product produces a variety of mechanical sounds. This is normal.

**Caution:**  
Never turn off this product during the ink charging process.  
Do not load paper until ink charging is complete.

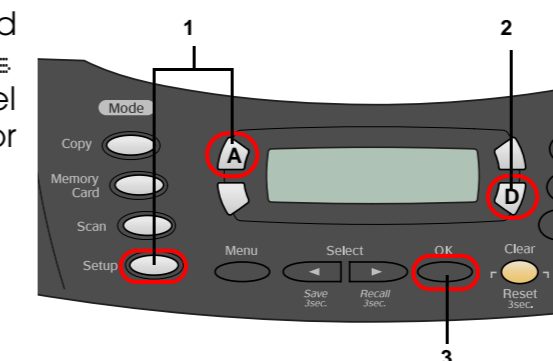
## 7 Selecting a Language

1. Press the Setup button and A button until Languages appears on the LCD panel and then press the Color button.

2. Select a language by pressing the D button.

3. Press the OK button.

Menu items appear in the selected language.

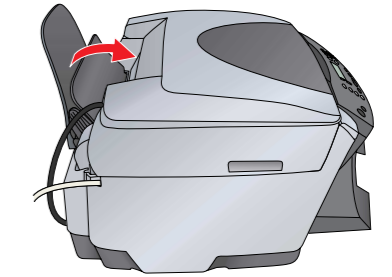


## 8 Loading Paper

1. Open the output tray.

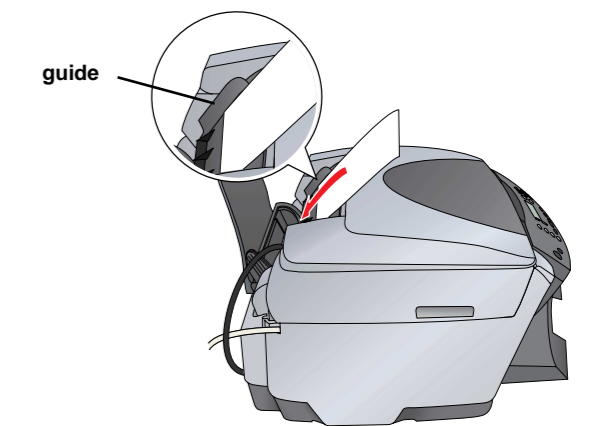


2. Move the feeder guard towards you.



3. While holding down its locking tab, slide out the edge guide.

4. Load the stack of paper with the printable side facing up and resting against the guide of feeder guard.



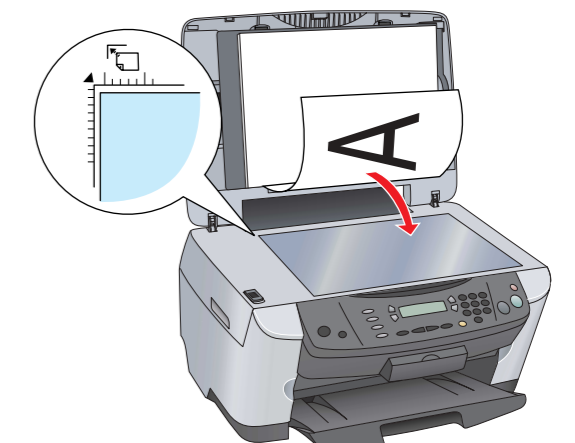
5. Stand the stack of paper against the paper support.

6. Move the feeder guard back.

**Now you are ready to use this product as a stand-alone device. See the next section to learn how to make a test copy. If you want to install software, see "Connecting to Your Computer" on the reverse side of this sheet.**

## 9 Making Copies

1. Place a document on the document table.



2. Press the Copy Mode button to enter the Copy Mode.

3. Press the numeric buttons to set the number of copies.

4. Press the  $\diamond$  B&W button (to copy in grayscale), or the  $\diamond$  Color button (to copy in color).



This product starts Copying.

**Caution:** Do not open the scanner unit during scanning or copying; otherwise, you may damage this product.

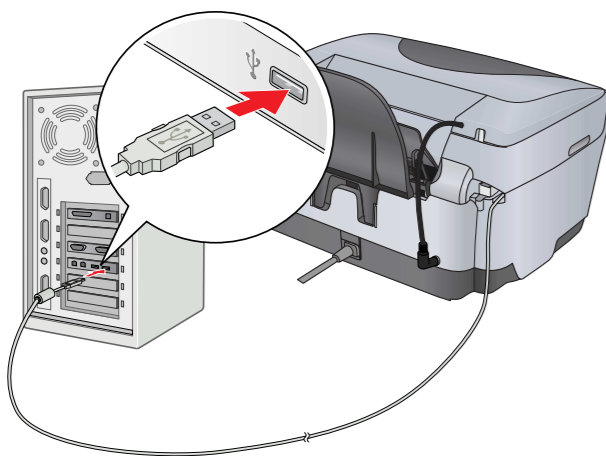
This product has a variety of copy functions. See "Features" on this sheet or Basic Operation Guide. To use this product with your computer, see next step.

## 10 Connecting to your Computer

1. Press the  $\odot$  On button to turn off this product.



2. Remove the USB cable connector from its package and then connect it to your computer.



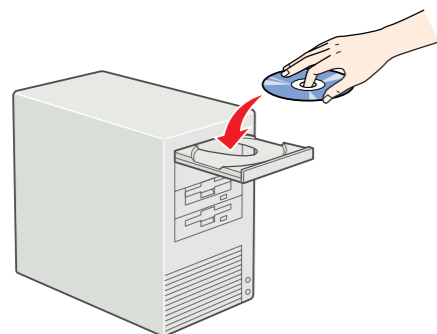
## 11 Installing the Software

**Note for Mac OS X:**

This software does not support the UNIX File System (UFS) for Mac OS X. Install the software on a disk or in a partition that does not use UFS.

This product does not support the Mac OS X Classic environment.

1. Make sure this product is connected and turned off, and then insert the software CD.



For Mac OS 8.6 to 9.X, double-click the  $\odot$  icon in the software CD.

For Mac OS X, open the  $\odot$  Mac OS X folder and then double-click  $\odot$  icon.

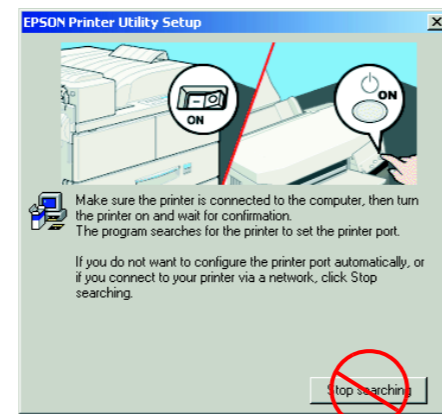
2. Turn off all virus protection programs and then click Continue.

3. Read the license agreement. If you agree with the terms, click Agree.

4. Click Install, and then follow the onscreen instructions.



5. When you see this screen, turn on this product and wait until the screen disappears. Then follow the onscreen instructions. Note that EPSON Smart Panel is installed in several steps.



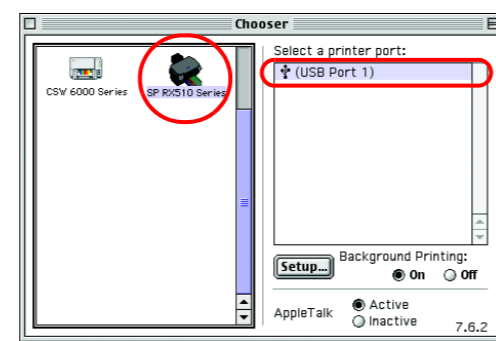
6. Click Exit or Restart Now on the final screen, and then remove the CD-ROM.

**For Windows users, you are ready to scan and print. See "Features" or "Getting More Information" on this sheet for instructions.**

**For Macintosh users, see the next section to set up this product as a printer.**

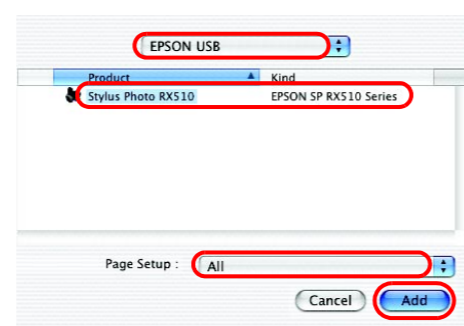
### For Mac OS 8.6 to 9.X

- Open Chooser from the Apple menu.
- Select SP RX510 Series and your USB port, and then close Chooser.



### For Mac OS X

- Open the  $\mathcal{A}$  Applications folder on your hard drive, and then open the  $\mathcal{U}$  Utilities folder and double-click  $\mathcal{P}$  Print Center.
- Click Add Printer in the Printer List dialog box.
- Select EPSON USB, click Stylus Photo RX510, and then select All from the Page Setup pop-up menu. Finally, click Add.



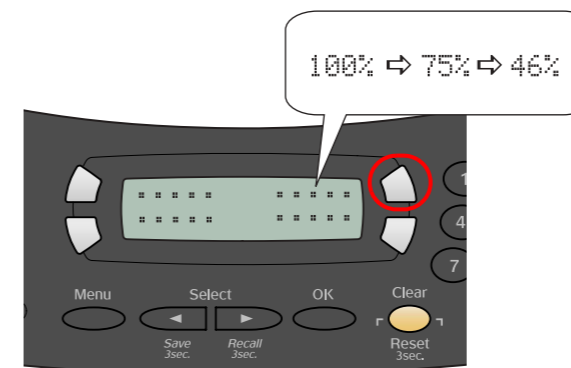
4. Make sure Printer List contains the printer (margin-type) options, and then click Close.

**Now you are ready to scan and print. See "Features" or "Getting More Information" on this sheet for instructions.**

## Features

### Buttons around LCD Panel

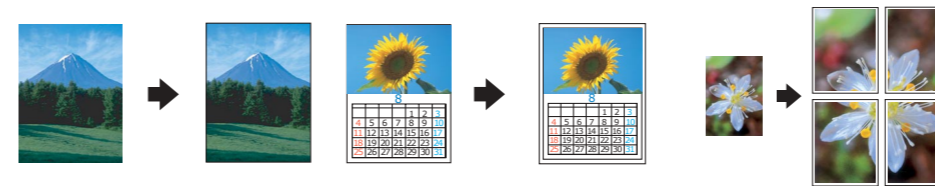
The four buttons around the LCD panel allow you to make settings quickly. Simply press the button next to a setting you want to change to move through the available options.



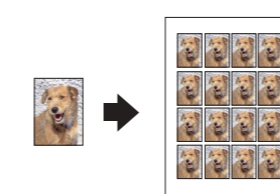
### Copying

You can copy with a variety of options.

**BorderFree**    **Small Margin**    **Poster**



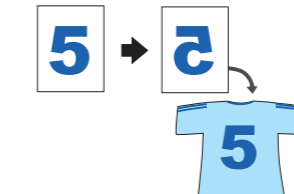
**Repeat**



**2-up**



**Mirror**



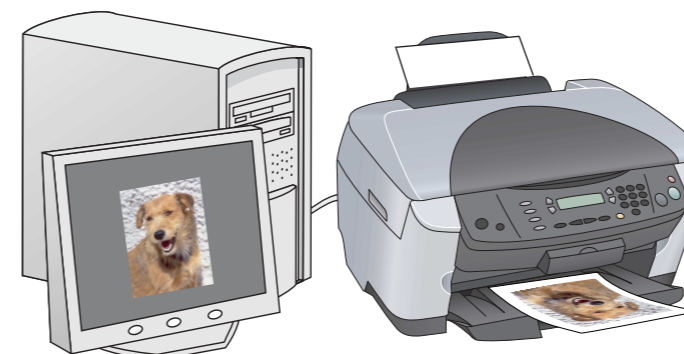
### Using a Memory Card

The built-in memory card slot allow you to do the followings:

- Print directly from a memory card. (See Basic Operation Guide.)
- Scan and save an image directly to a memory card. (See Basic Operation Guide.)
- Transfer the data stored on a memory card to your computer. (See Reference Guide.)

### Printing

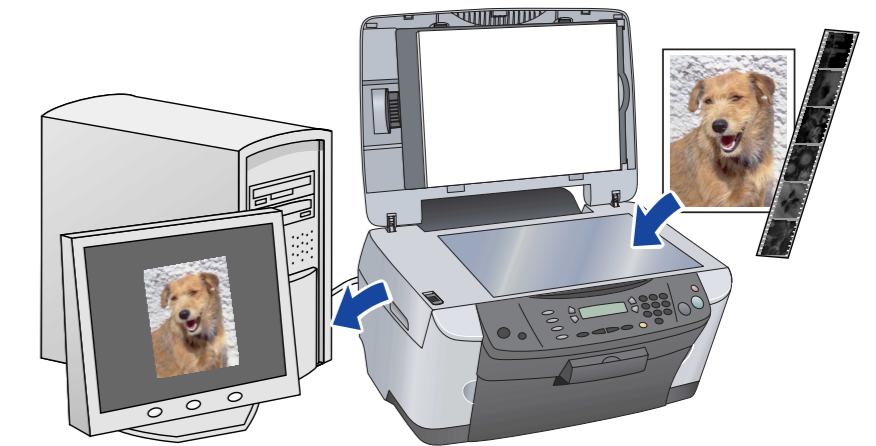
You can print data, and make photos, postcards, and posters from your computer.



To use this feature, you need to connect this product to a computer with the EPSON Printer software installed. See "Installing the Software" on this sheet to install the EPSON printer driver.

## Scanning

You can scan documents, photos and films into an electronic format for your computer, and then use the scanned images in greeting cards, e-mail, or on the web.



To use the scan features, you need to connect this product to a computer with EPSON Scan and EPSON Smart Panel installed. See "Installing the Software" on this sheet to install EPSON Scan and EPSON Smart Panel.

### EPSON Smart Panel

It is the copy center of this product when it is functioning as a scanner. Use it to copy, create an e-mail, scan, print, fax, or use OCR (Optical Character Recognition).



## Getting More Information

### Basic Operation Guide

Contents	Describes how to use this product as a stand-alone device. You can copy, print directly from a memory card, and scan to a memory card. Also, you can change ink cartridges and check the condition of this product. It also provides troubleshooting tips and customer support information.
----------	---

### Reference Guide

Contents	Provides basic information on printing and scanning. Maintenance and troubleshooting tips, technical and customer support information are also included.
How to access	Double - click the ESPRX510 Reference Guide icon on the desktop.

### Online Help

Contents	Provides you with detailed information on the printer driver and EPSON Scan.
How to access	See "Getting Information" on the Reference Guide.