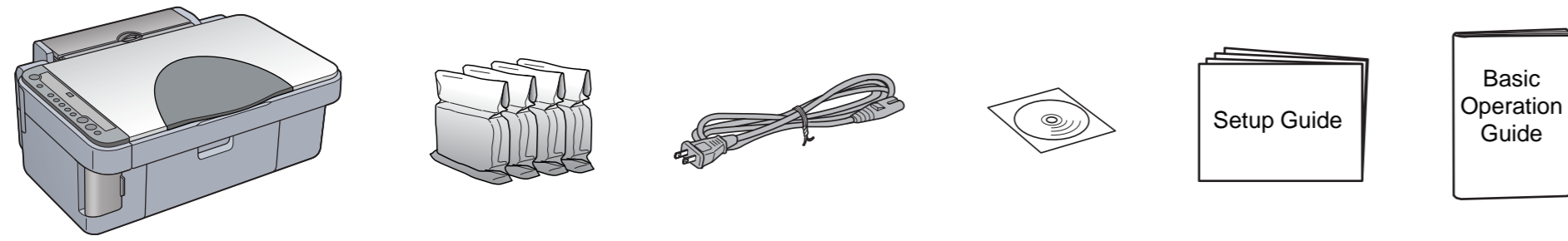


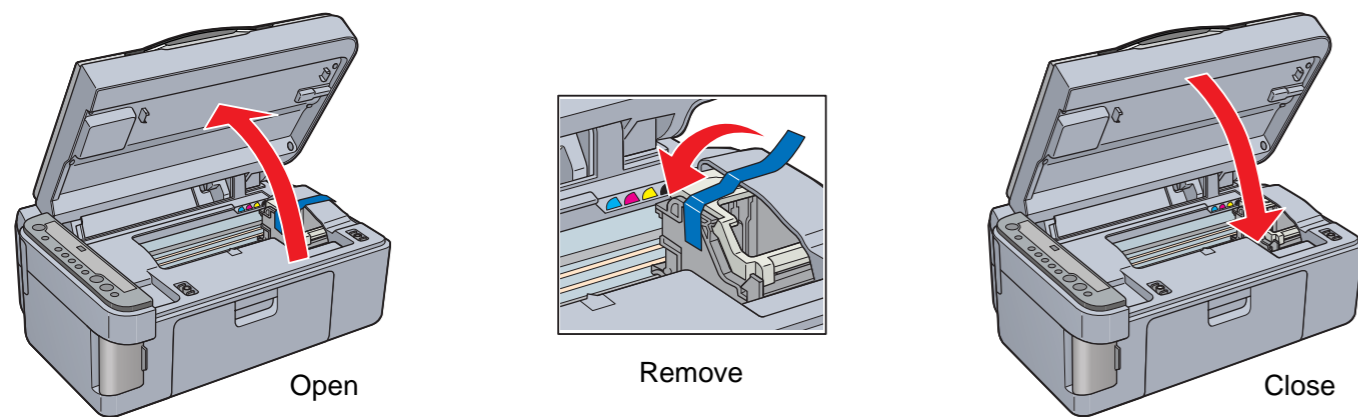
EPSON STYLUS™ PHOTO RX430 Series Setup Guide

4049925-00
xxx

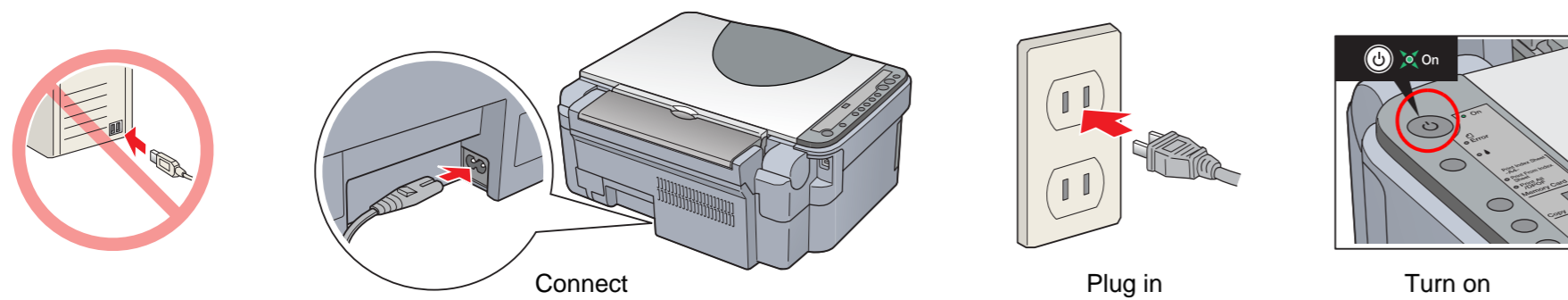
1. Unpacking



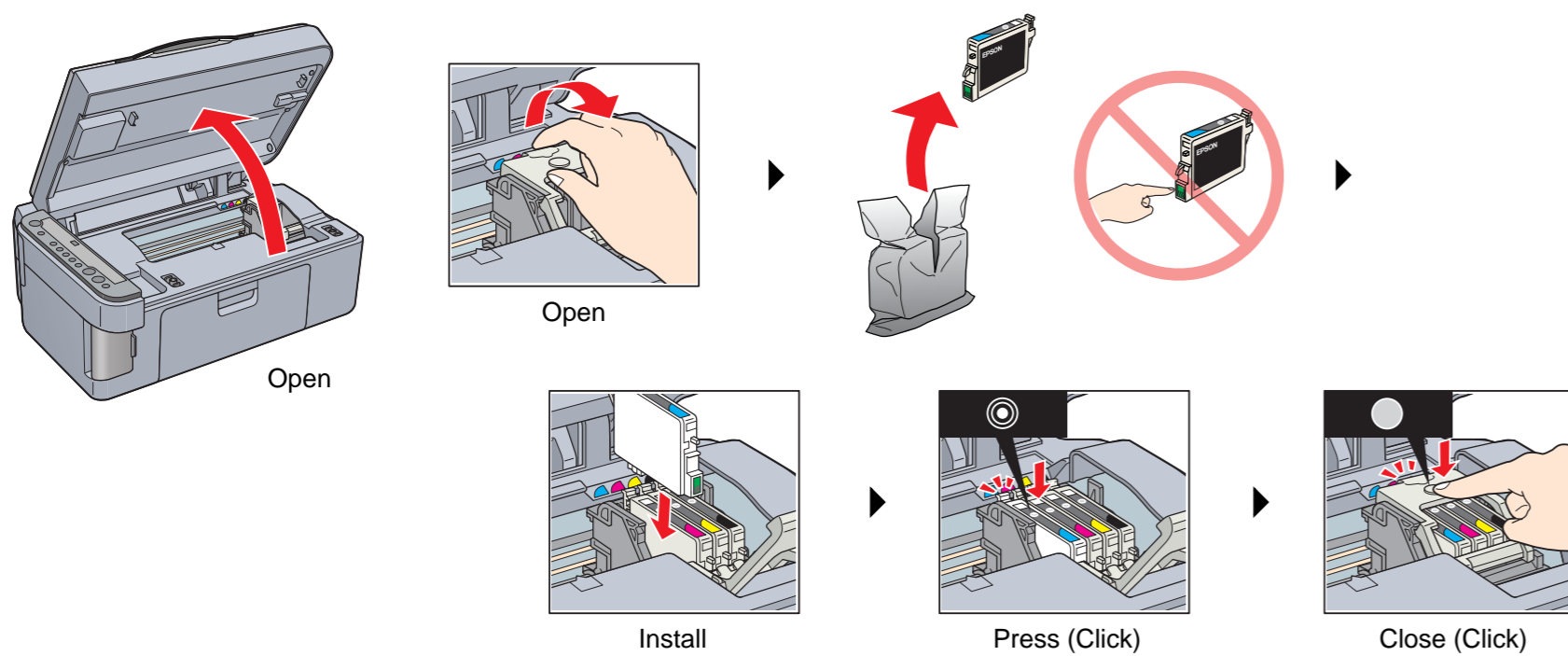
2. Removing Protective Materials



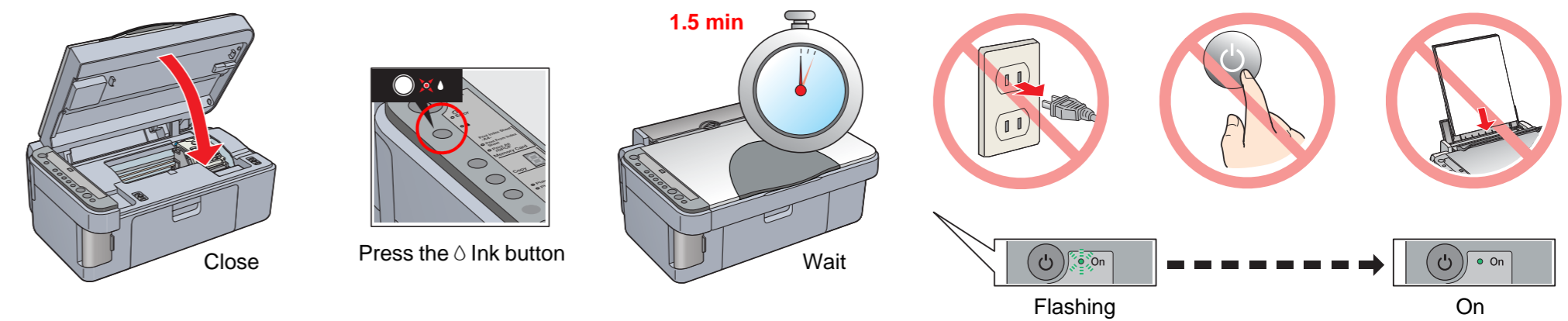
3. Turning On



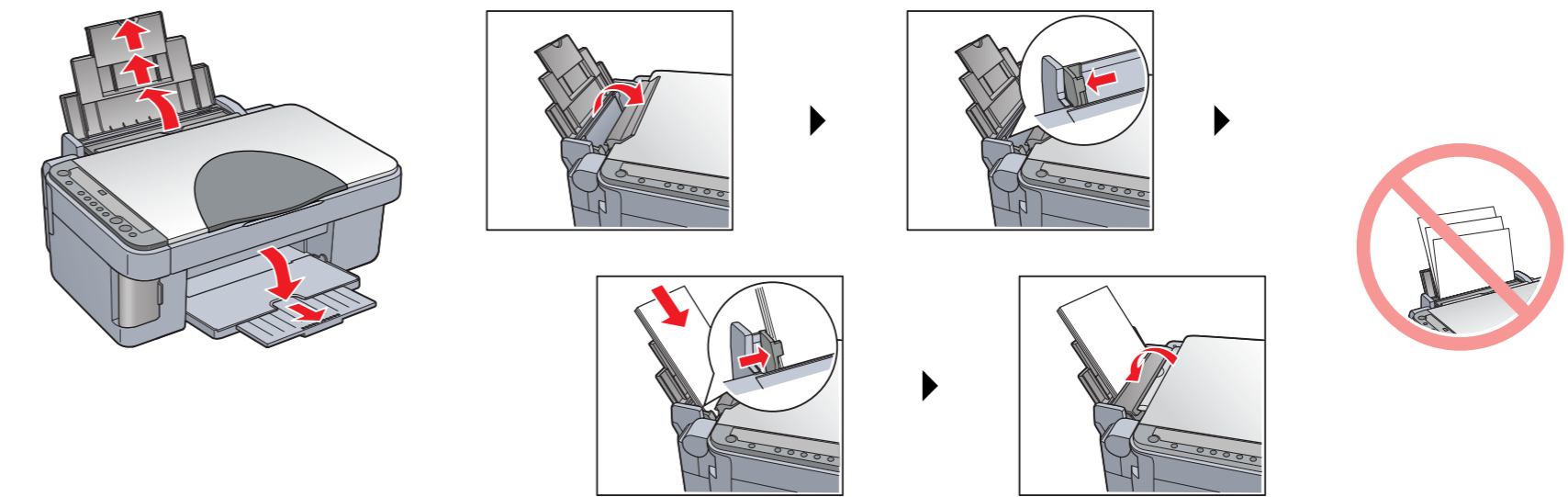
4. Installing Ink Cartridges



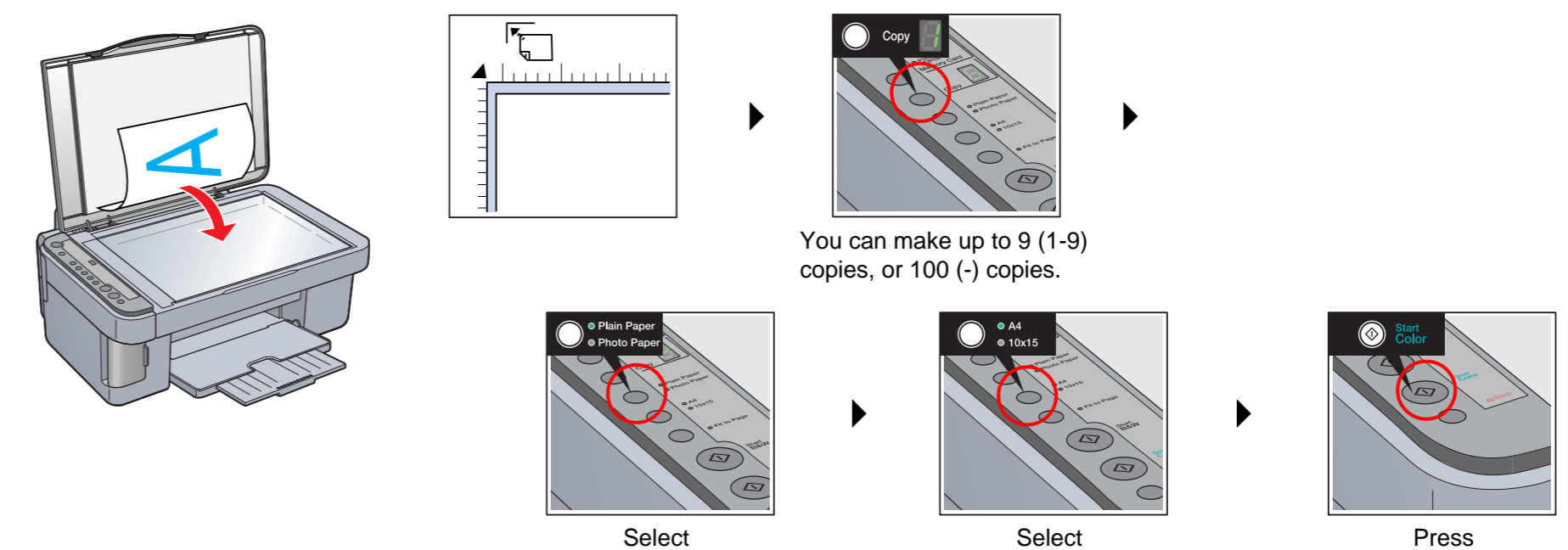
5. Ink Charging



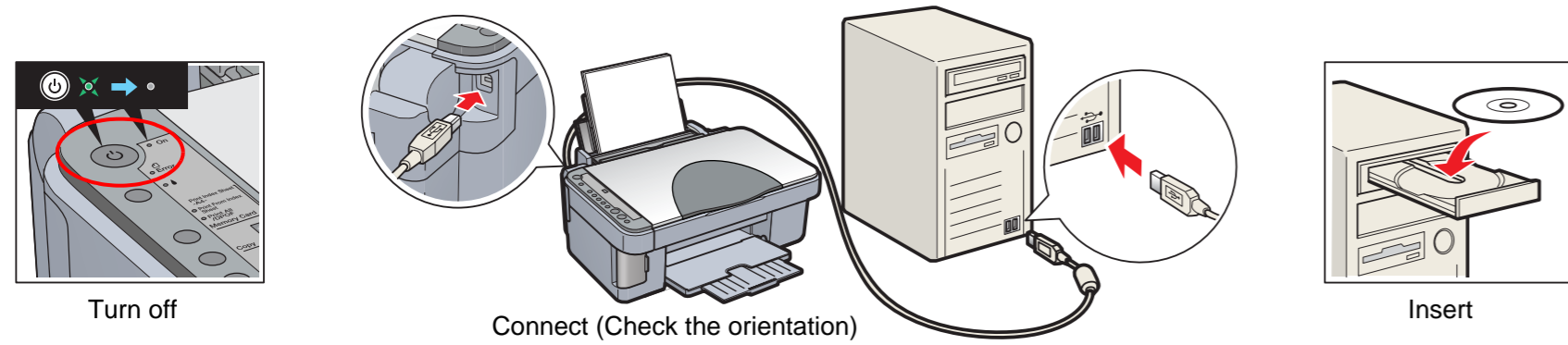
6. Loading Paper



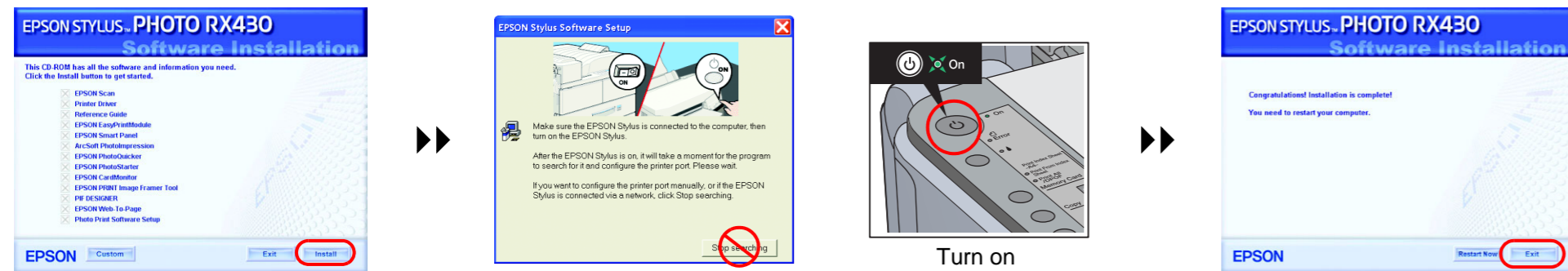
7. Making Copies



8. Connecting to a Computer and Installing the Software

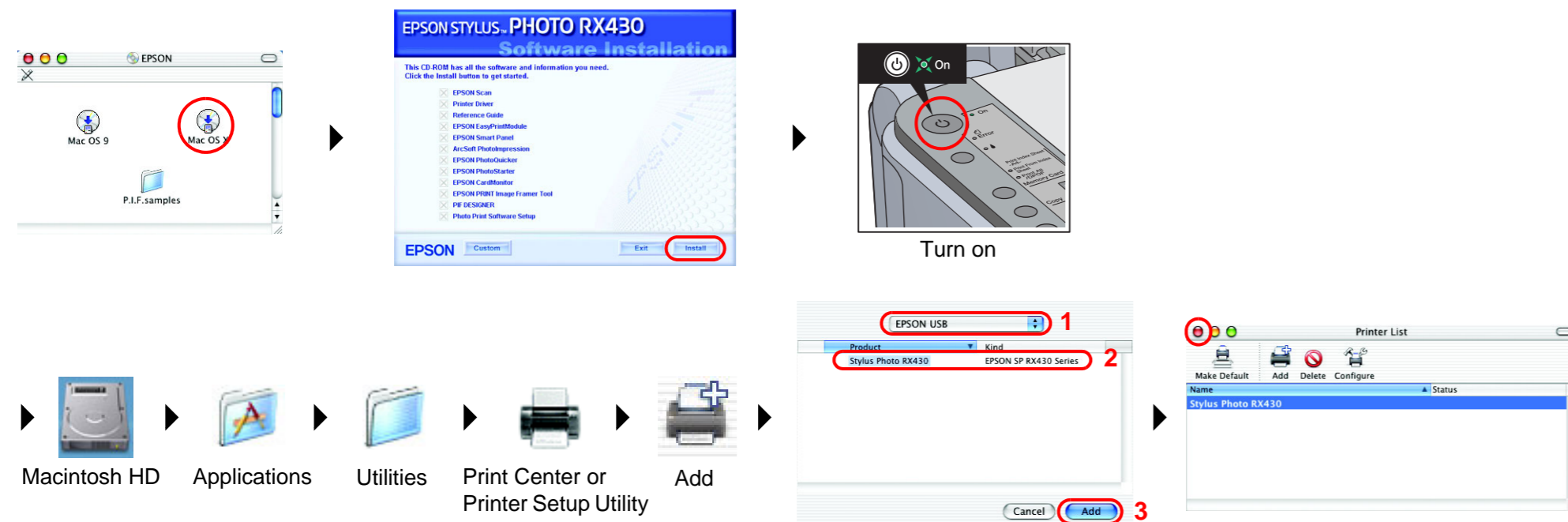


For Windows

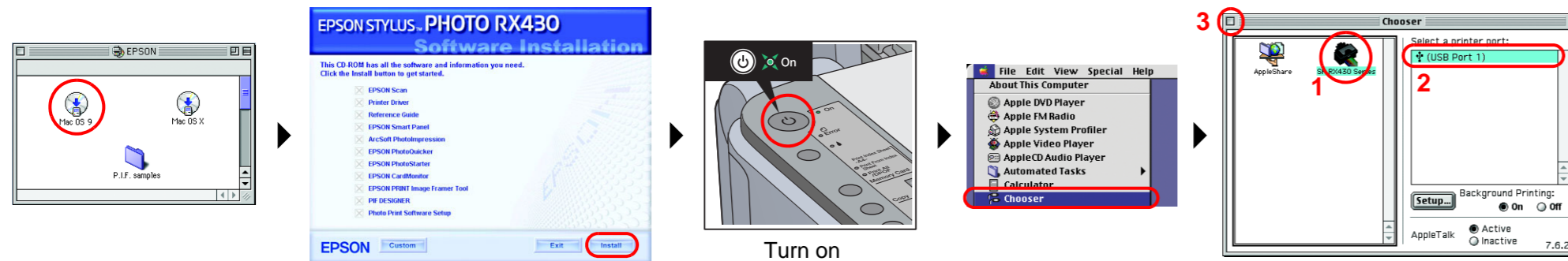


- ❑ If the installer dialog box does not appear, double-click the CD-ROM icon.
- ❑ A screen appears after installation has been completed successfully. Restart your computer to start using this product from your computer.

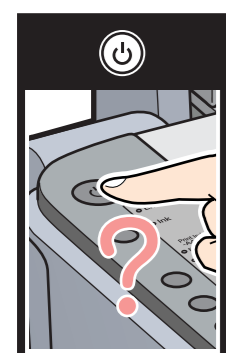
For Mac OS X



For Mac OS 9



Troubleshooting



Plug in the power cord correctly.



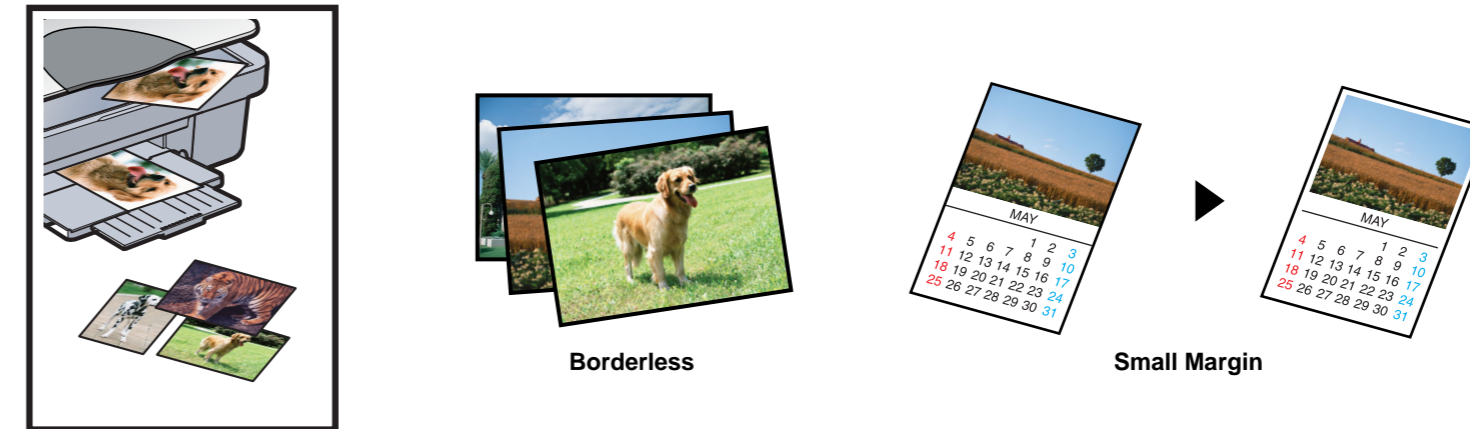
- ❑ Remove the protective material around the cartridge cover.
- ❑ Open the cartridge cover and make sure the ink cartridges were securely inserted until they clicked into place.
- ❑ Before loading the paper, remove the paper from the sheet feeder. Fan the stack of paper, then tap it on a flat surface to even the edges.



- ❑ Connect the USB cable correctly.
- ❑ Make sure that the printer driver and scanner driver have been installed correctly.

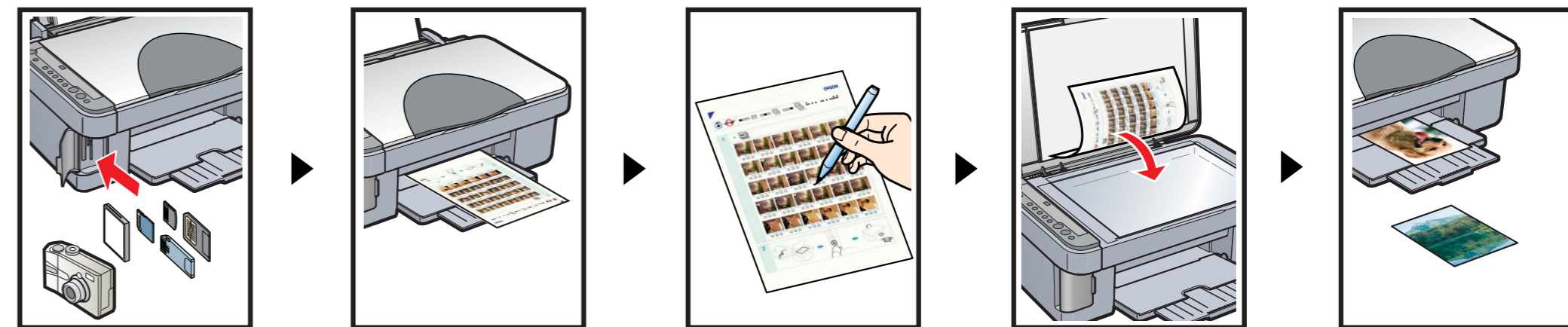
Features

Copying



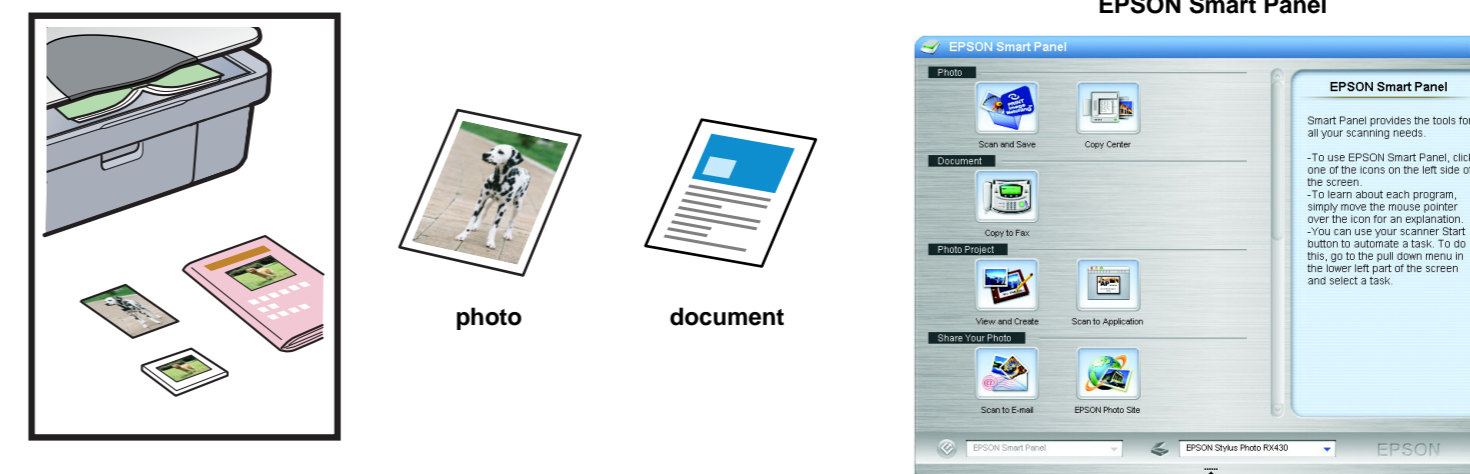
For more information on using the copy functions, see the Basic Operation Guide.

Direct Printing



For more information on using the direct printing functions, see the Basic Operation Guide.

Scanning



You can use scanned images in various ways with EPSON Smart Panel. Use it to scan, send a fax, or send an e-mail. See the Online Reference Guide for details.

Printing



You can print documents and web pages from your applications. You can also make photos, postcards, and posters from your computer. It is easy to make those using the software "EPSON PhotoQuicker". See the Photo Print Software Setup for details.

Getting More Information

Basic Operation Guide	Describes the basic procedures for copying, printing, scanning and other information.
Online Reference Guide	Describes how to print and scan in detail. Maintenance and troubleshooting tips, in addition to technical and customer support information are also included. Double-click the ESPRX430 Reference Guide icon on the desktop.
Photo Print Software Setup	Describes how to use the software supplied with this product. Double-click the ESPRX430 Software Guide icon on the desktop.