


**EN** Start Here  
**ID** Mulai di sini

 Warnings must be followed carefully to avoid bodily injury.  
Peringatan harus diikuti hati-hati untuk menghindari terjadinya cacat fisik.



Copyright © 2008 Seiko Epson Corporation. All rights reserved.  
Printed in XXXXXX

No. Reg: 03/DJPDN/MG/III/2001  
Tgl. 13 Maret 2001

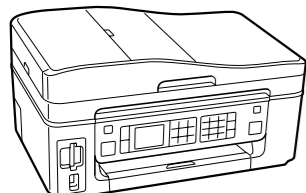
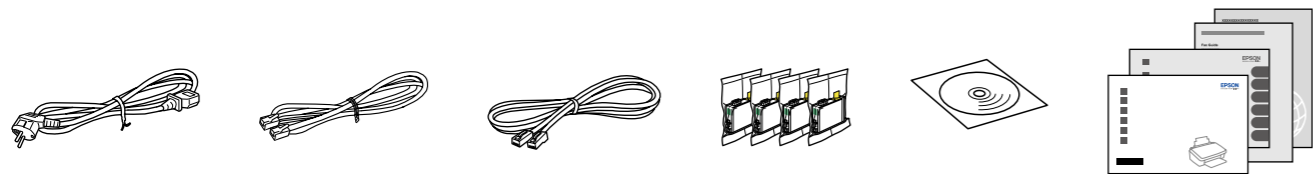


Unpacking  
Buka Kemasan

1

Contents may vary by location.  
Isi tergantung lokasi.

Do not open the ink cartridge package until you are ready to install it in the printer. The cartridge is vacuum packed to maintain its reliability.  
Jangan buka kemasan kartrid tinta sampai Anda siap memasangnya pada printer. Kartrid dikemas kedap udara untuk menjaga mutunya.



Remove all protective materials.  
Lepas semua pelindung.

Turning On and Setting Up  
Menyalakan dan Menyetting

2

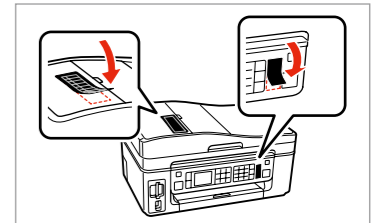
Depending on the location, the supplementary stickers may not be available.  
Tergantung pada lokasi, stiker tambahan mungkin tidak tersedia.

1



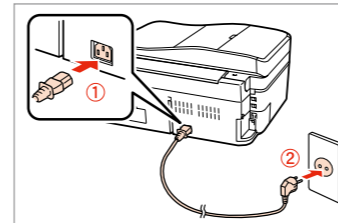
Peel off.  
Kelupas.

2



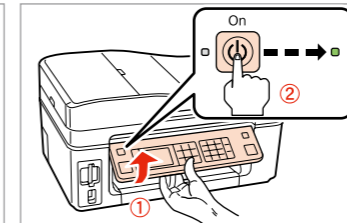
Stick.  
Tempelkan.

3



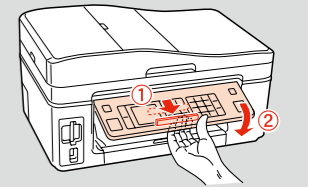
Connect and plug in.  
Hubungkan dan colokkan.

4

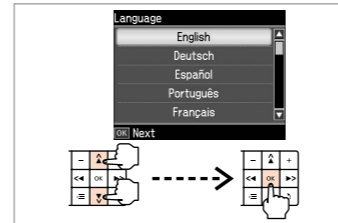


Lift and turn on.  
Angkat dan nyalakan.

To lower, pull lever on rear of control panel until it clicks, and then lower.  
Untuk menurunkan, tarik tuas di belakang panel kendali sampai terdengar bunyi klik, lalu turunkan.

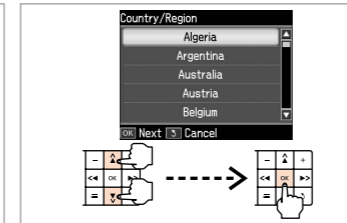


5



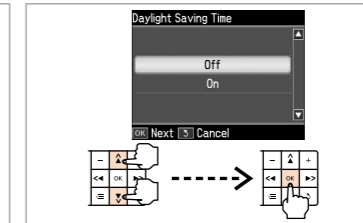
Select a language.  
Pilih bahasa.

6



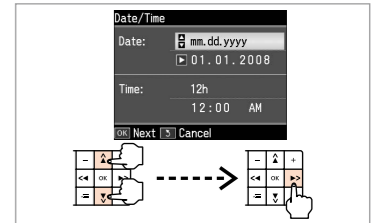
Select.  
Pilih.

7



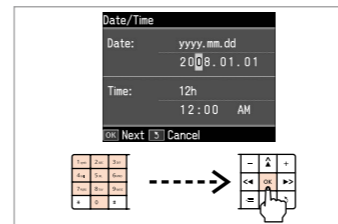
Select.  
Pilih.

8



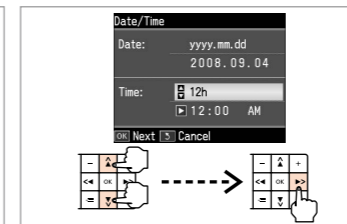
Select how to enter the number.  
Pilih cara memasukkan angka.

9



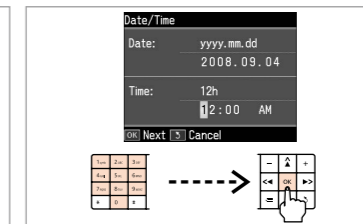
Enter the date.  
Masukkan tanggal.

10



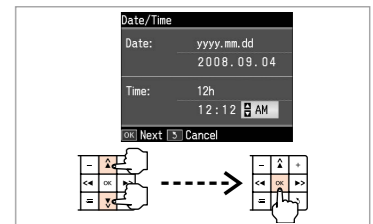
Select.  
Pilih.

11



Enter the time.  
Masukkan waktu.

12



Select.  
Pilih.

Installing the Ink Cartridges  
Memasang Kartrid Tinta

# 3

**1** Open. Buka.

**2** Shake. Kocok.

**3** Remove yellow tape. Lepas pita kuning.

**4** Install. Pasang.

Press (click). Tekan (klik).

**5** Close. Tutup.

**6** Press. Tekan.

**7**

Initializing ink system. Please wait.

Initialization is complete.

OK Done

Wait about 2.5 min.  
Tunggu sekitar 2.5 mnt.

The ink cartridges first installed in your printer will be partly used to charge the print head. These cartridges print fewer pages compared to subsequent ink cartridges.  
Kartrid tinta yang pertama dipasang pada printer Anda sebagian akan digunakan untuk mengisi kepala cetak. Kartrid ini akan mencetak lebih sedikit halaman daripada kartrid tinta berikutnya.

Installing the Software  
Menginstal Perangkat Lunak

# 4



Do not connect the USB cable until you are instructed to do so.  
Jangan hubungkan kabel USB sampai Anda diminta untuk melakukannya.

If this screen appears, click **Cancel**.  
Jika layar ini muncul, klik **Cancel (Batal)**.

**1** Insert. Masukkan.

Mac OS X

Windows

Windows: No installation screen? →  
Windows: Tidak ada layar instalasi? →

**2** Select a language. Pilih bahasa.

**3** Follow the instructions. Ikuti petunjuk.

**4** Select connection type and follow instructions.  
Pilih jenis koneksi dan ikuti petunjuknya.

**5** Check. Periksa.

**6** Installation complete. Instalasi selesai.

Getting More Information  
Masukkan kertas dengan sisi cetak menghadap atas.

Copying/Printing/Troubleshooting without a computer  
Menyalin/Mencetak/Pemecahan Masalah tanpa komputer

Printing/Scanning/Networking/Troubleshooting with a computer  
Mencetak/Memindai/Jaringan/Pemecahan Masalah dengan komputer