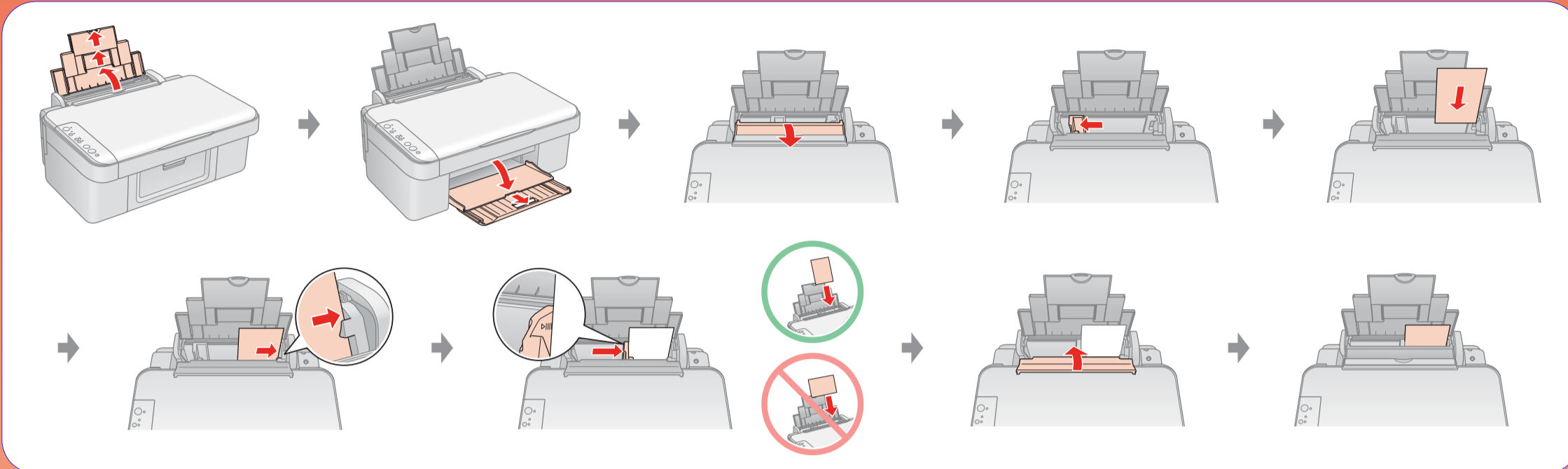


User's Guide

— for use without a computer —

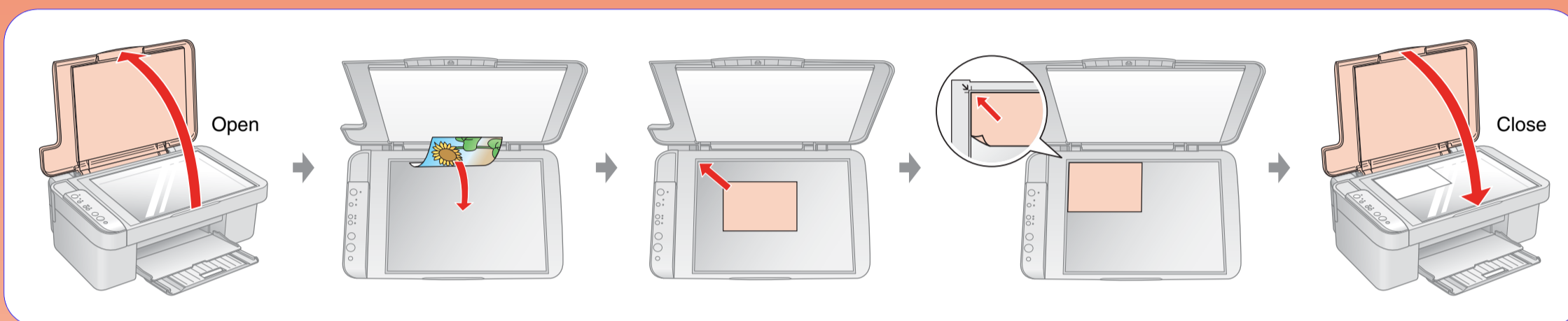
Loading Paper



Loading Capacity

Available Paper	Paper Size	Sheets
Plain Paper	A4	100
Epson Premium Ink Jet Plain Paper		
Epson Bright White Ink Jet Paper	A4	80
Epson Premium Glossy Photo Paper		
Epson Premium Semigloss Photo Paper	10 x 15 cm (4 x 6 in.)	20
Epson Glossy Photo Paper		
Epson Ultra Glossy Photo Paper		

Placing an Original



Copying

● = On

Photo Copy without Borders

● 10x15 4"x6"

● A4

● Fit to Page

Photo Copy with Borders

● 10x15 4"x6"

● A4

● Fit to Page

Document Copy

● 10x15 4"x6"

● A4

● Fit to Page

Start **B&W** or Start **Color**

Enlarged Scale Copy

● 10x15 4"x6"

● A4

● Fit to Page

Start **B&W** or Start **Color**

Reduced Scale Copy

● 10x15 4"x6"

● A4

● Fit to Page

Start **B&W** or Start **Color**

Draft Document Copy

● 10x15 4"x6"

● A4

● Fit to Page

Start **B&W** or Start **Color**

● Stop

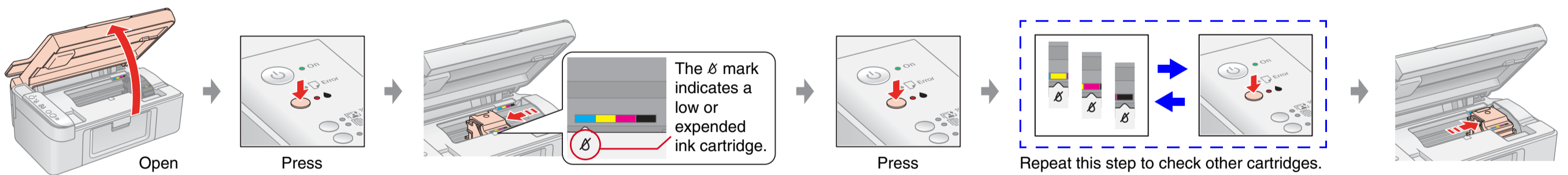
Hold **Stop** button and press **Start** button

Cancel Copy

● Stop

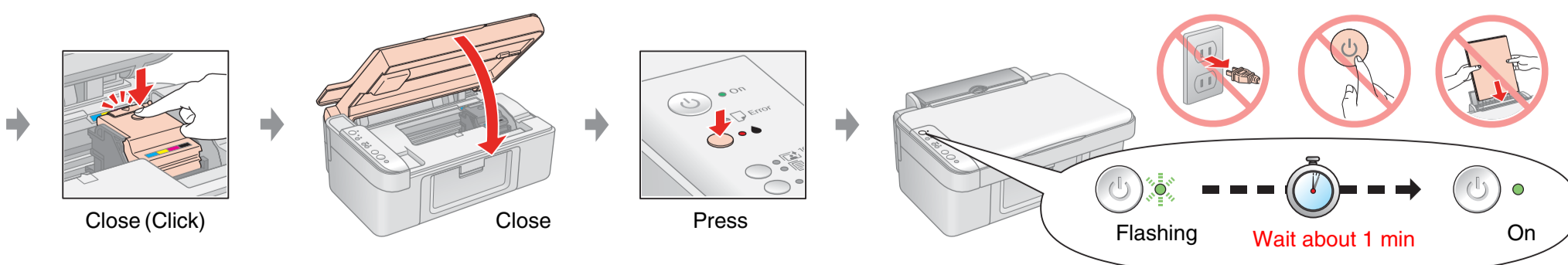
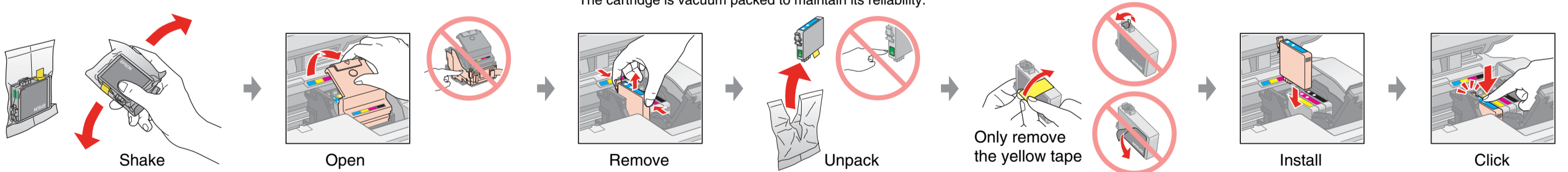
Replacing Ink Cartridges

Checking the Ink Cartridge Status



Removing and Installing Ink Cartridges

Note:
Do not open the ink cartridge package until you are ready to install it in the printer.
The cartridge is vacuum packed to maintain its reliability.




Epson Ink Cartridges



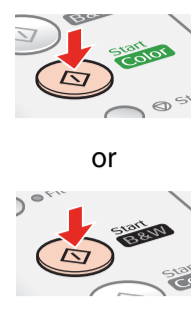

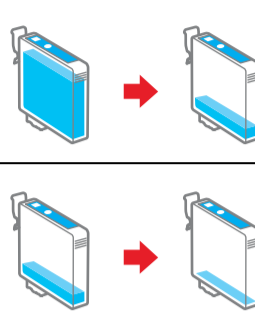
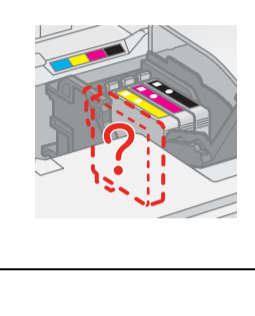
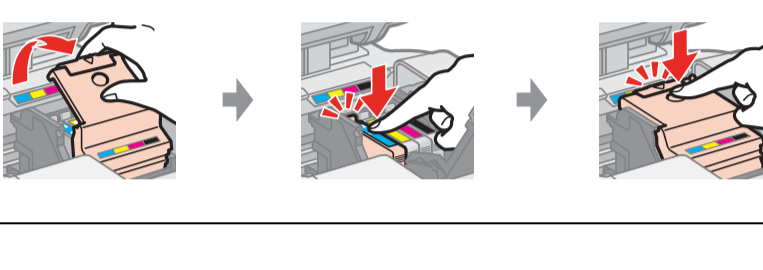


Color	Part Number
Black	T0731
Cyan	T0732
Magenta	T0733
Yellow	T0734

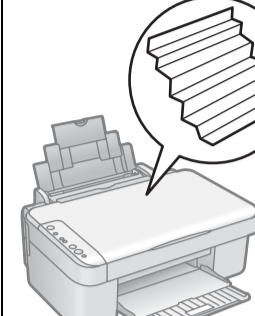
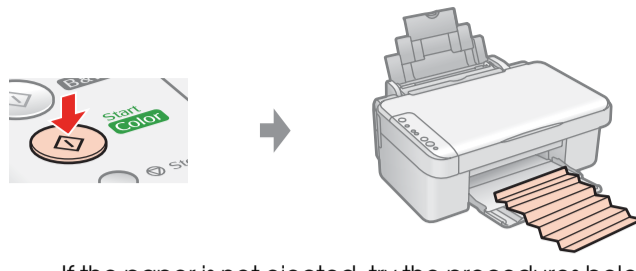
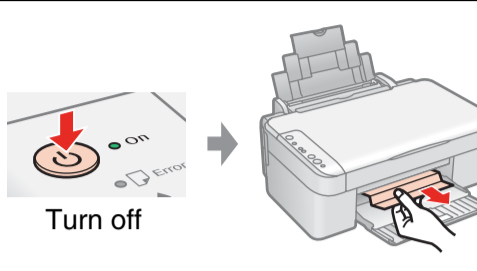

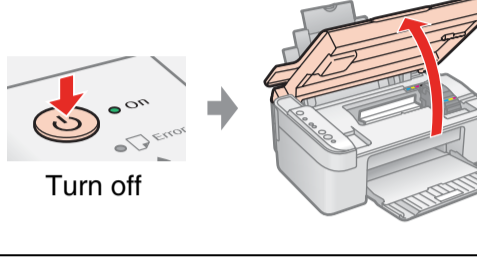
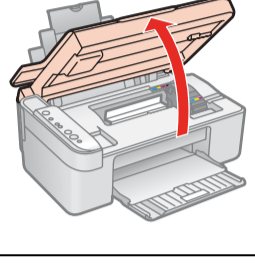
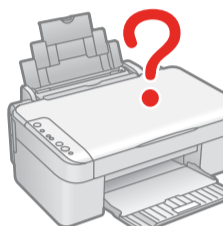


Troubleshooting

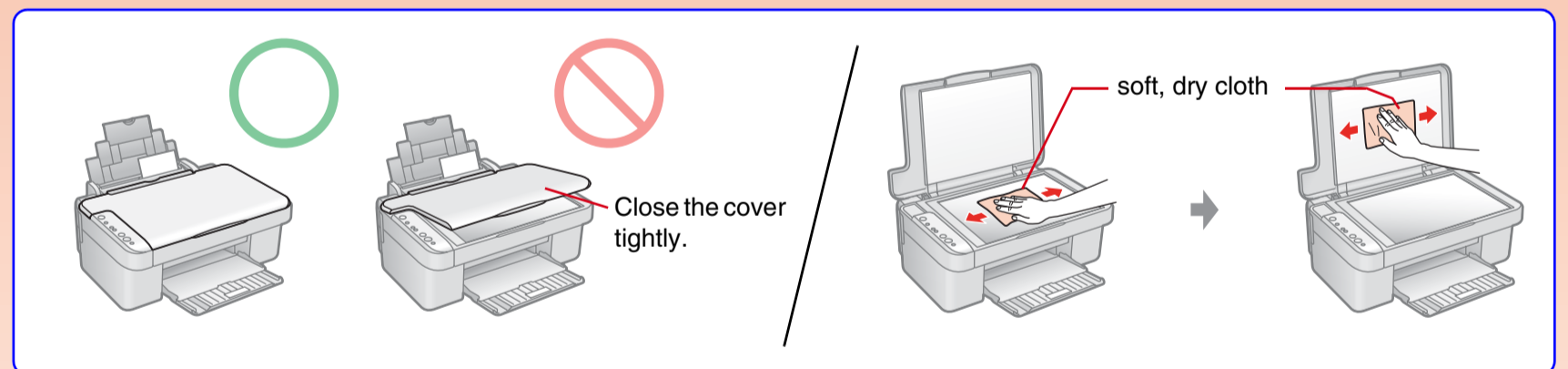
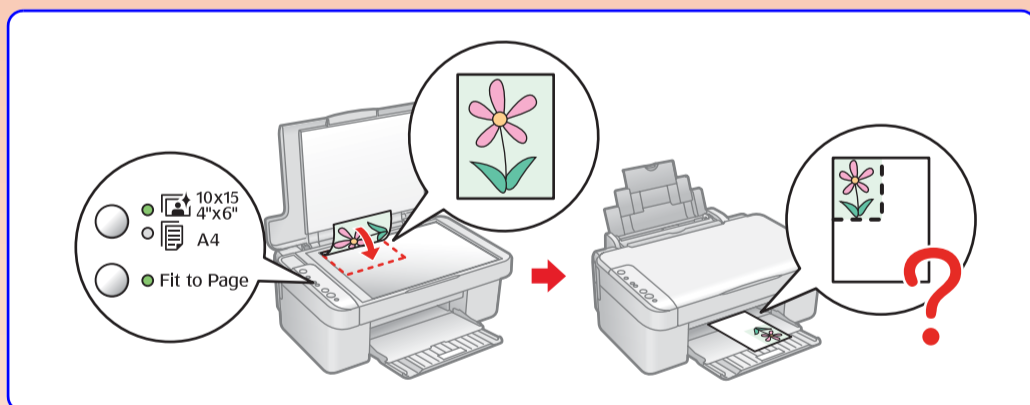
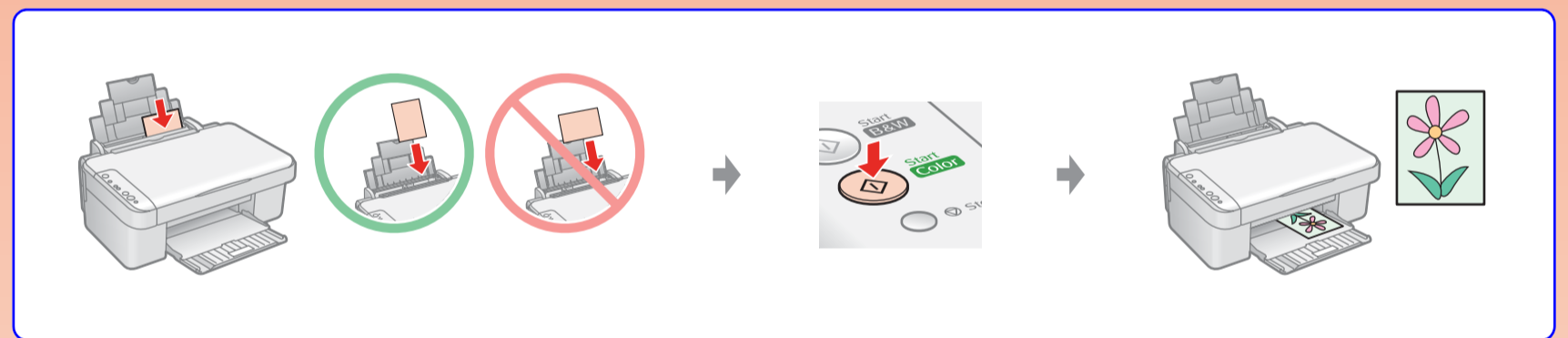
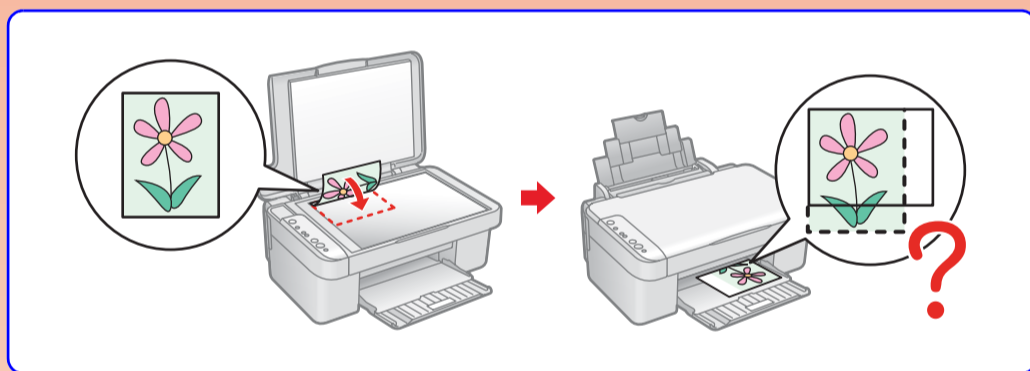
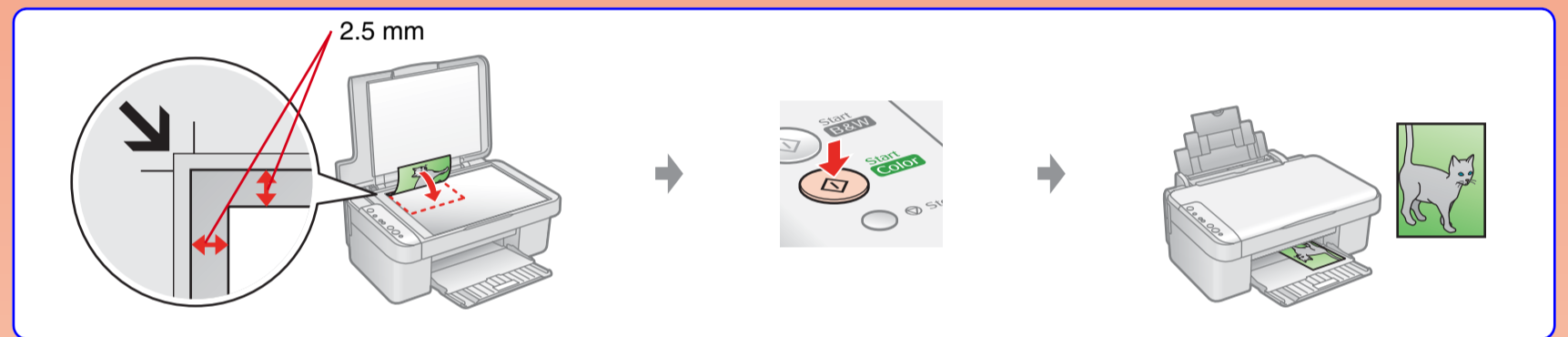
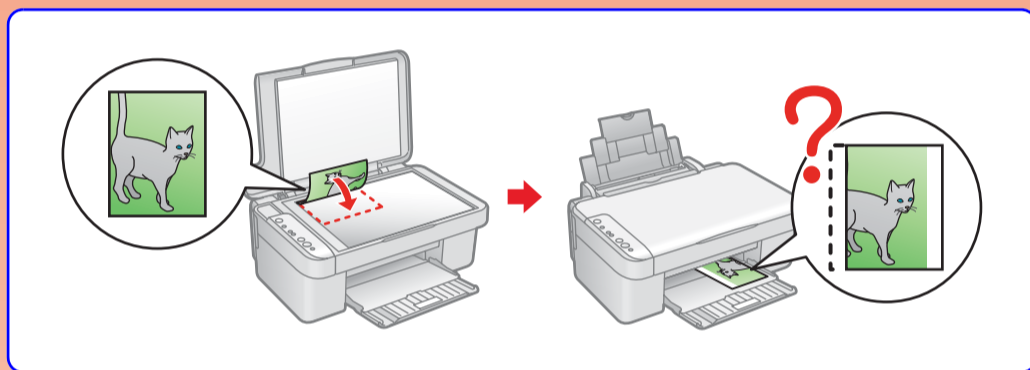
Error Indicators

 = Flashing, ● / ● = On

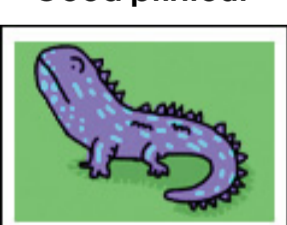
Lights	Cause	Solution
● Error		 or  → See Loading Paper on the front page.
		→ See Replacing Ink Cartridges on the front page.
● ●		If the light is still on or flashing after you replace the cartridge, try the procedure below. 
 ● Other lights off	Sleep mode	Press the  button to wake the product.

Lights	Cause	Solution
● Error		 If the paper is not ejected, try the procedures below.  Turn off or   Turn off 
All lights flashing		Contact your dealer.
● ● Other lights flashing	Waste ink pad in the printer is saturated.	Contact your dealer to replace it.

Copy Problems

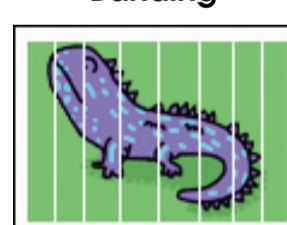


Good printout




Problem with printout
→ Run a nozzle check


Banding



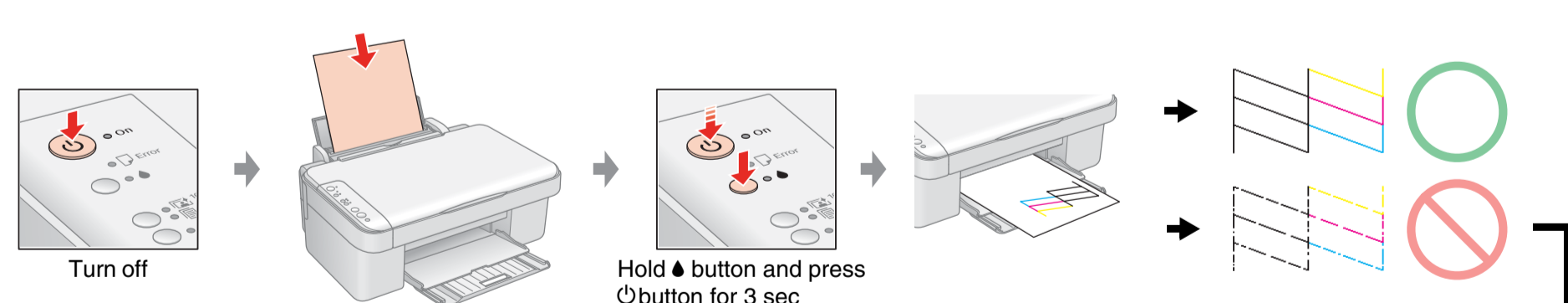
Faint





Colors missing

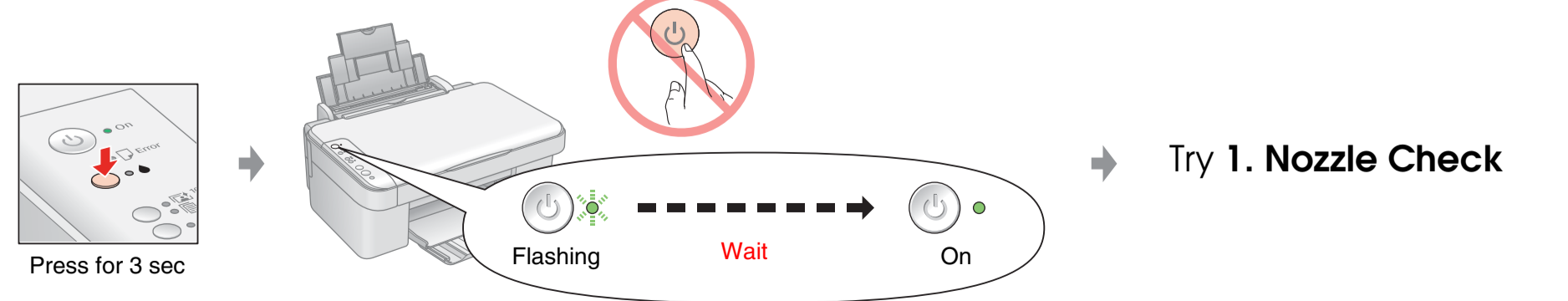


1. Nozzle Check



Turn off → Hold  button and press  button for 3 sec

2. Print Head Cleaning



Press for 3 sec → Flashing → Wait → On → Try **1. Nozzle Check**