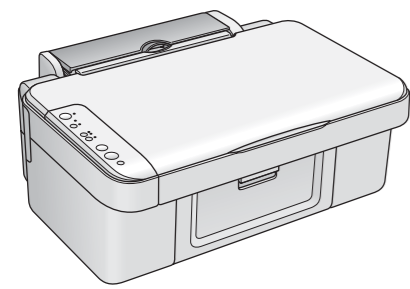
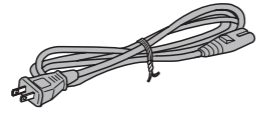


# Start Here

## 1. Unpacking



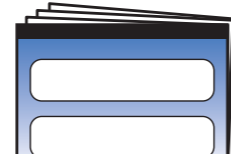
Ink Cartridges



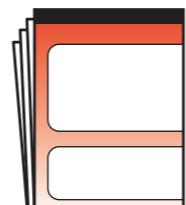
Power Cord



CD-ROM



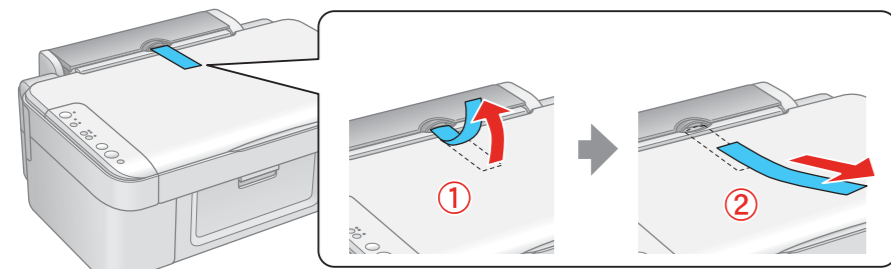
Start Here



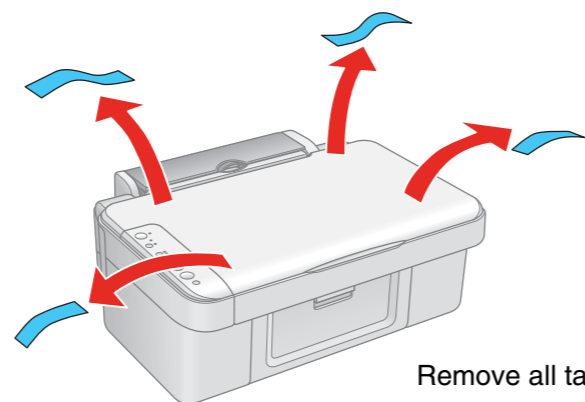
User's Guide

**Note:**  
Do not open the ink cartridge package until you are ready to install it in the printer.  
The cartridge is vacuum packed to maintain its reliability.

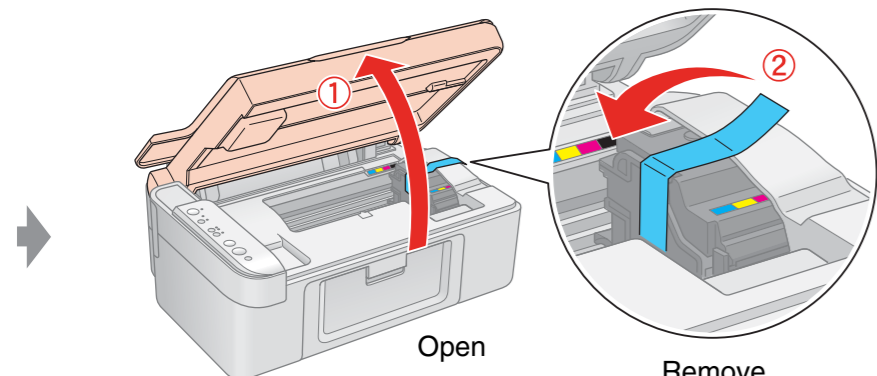
## 2. Removing Protective Tape



Remove

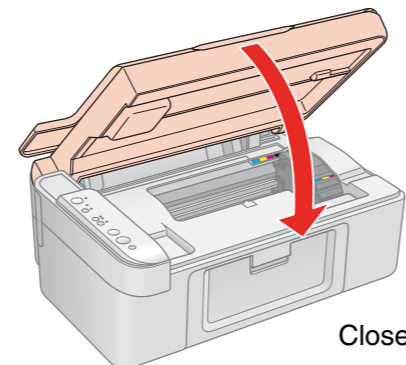


Remove all tape



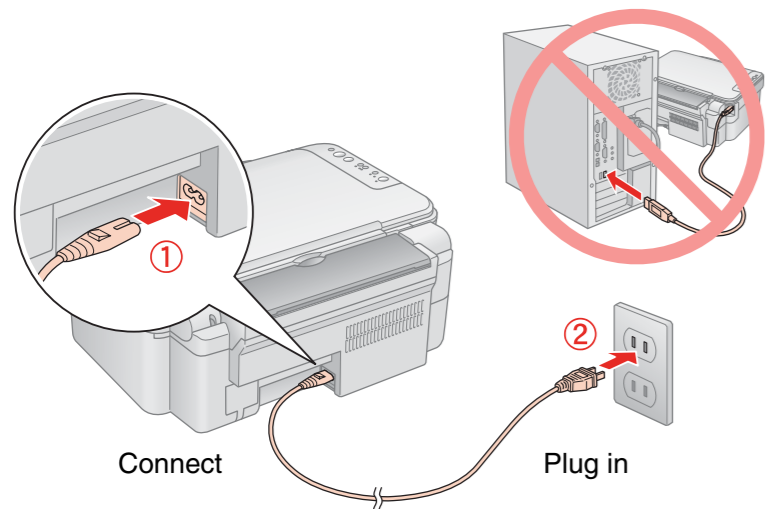
Open

Remove



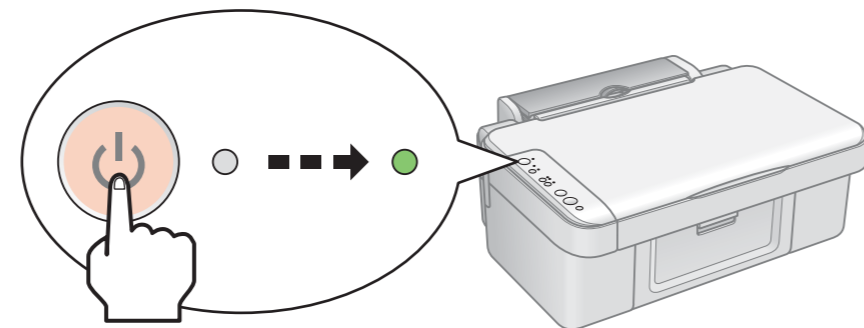
Close

## 3. Turning On



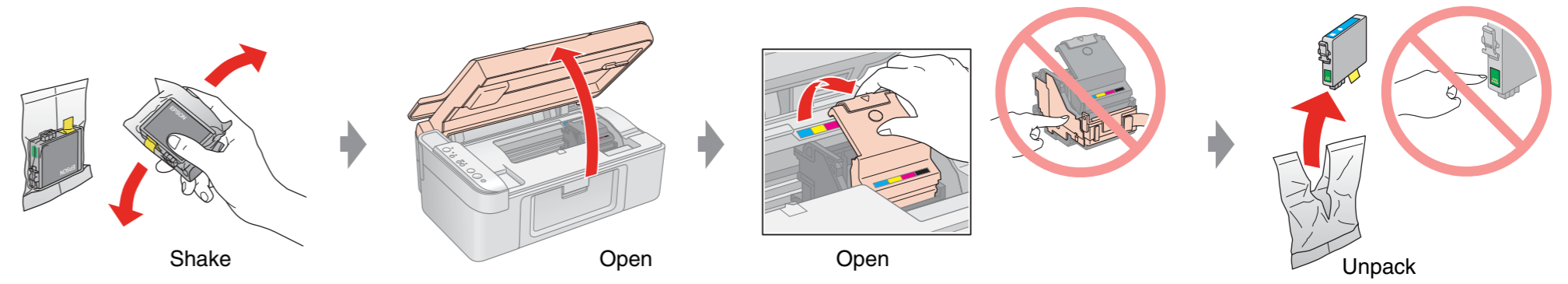
Connect

Plug in

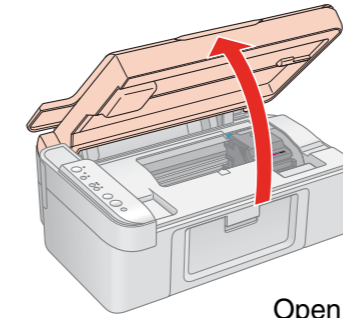


Turn on

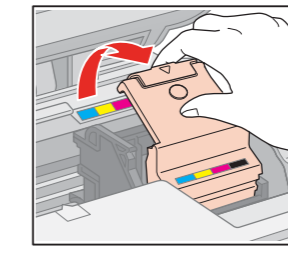
## 4. Installing Ink Cartridges



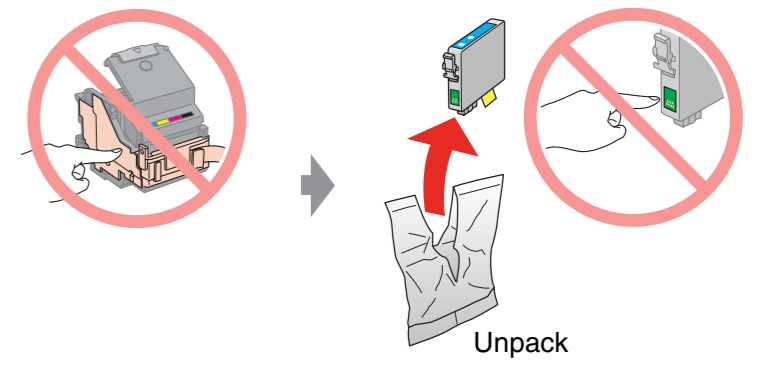
Shake



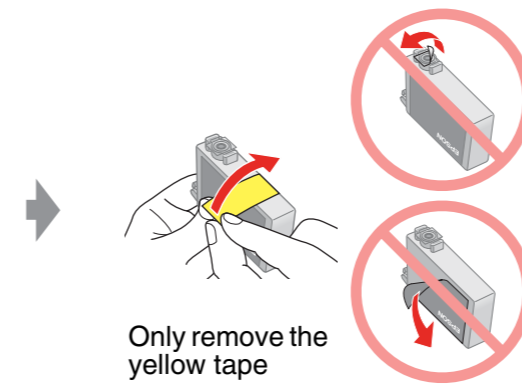
Open



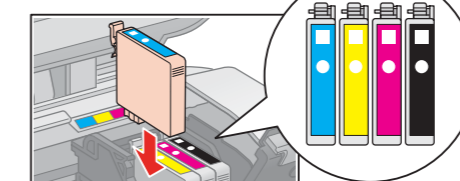
Open



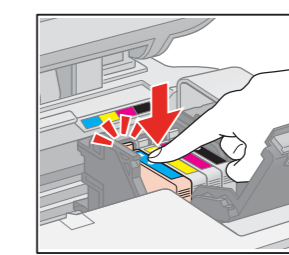
Unpack



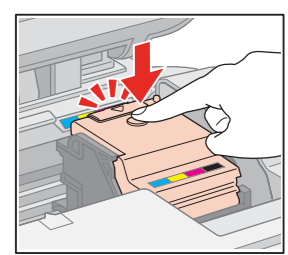
Only remove the yellow tape



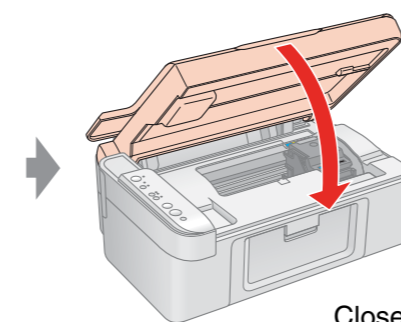
Install



Press



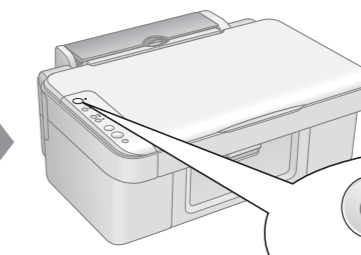
Close (Click)



Close



Press



Flashing

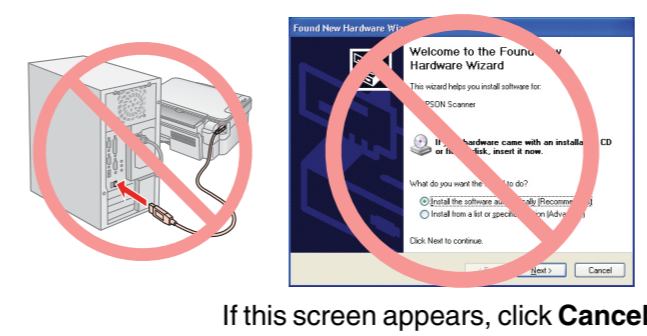
Wait about 1.5 min

On

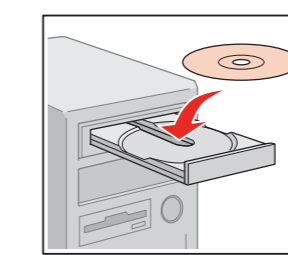
**Note:**  
The ink cartridges first installed in your Epson Stylus CX will be partly used to charge the print head. Subsequent ink cartridges will last for their full rated life.

## 5. Installing the Software

**Do not connect the USB cable until you are instructed to do so.**



If this screen appears, click **Cancel**.



Insert

For Windows

For Mac OS X



Double-click

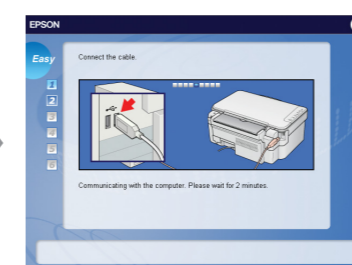


Click

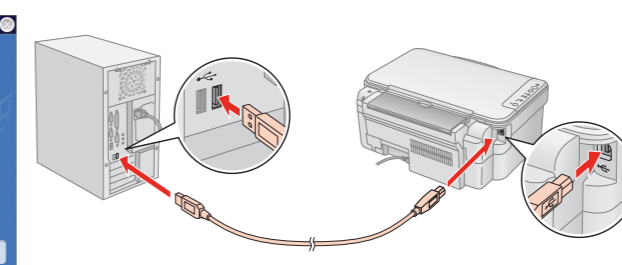
☐ For Windows. No installation screen? → Double-click the CD-ROM icon.



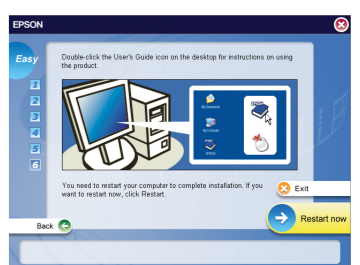
Follow the instructions.



When this screen appears, connect to your PC.



Follow the instructions.



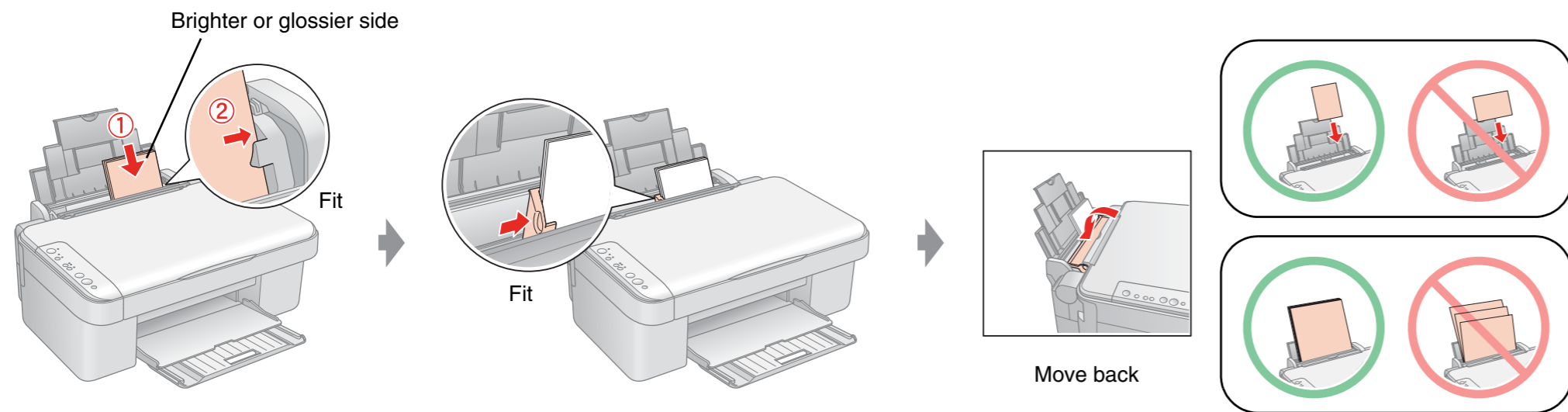
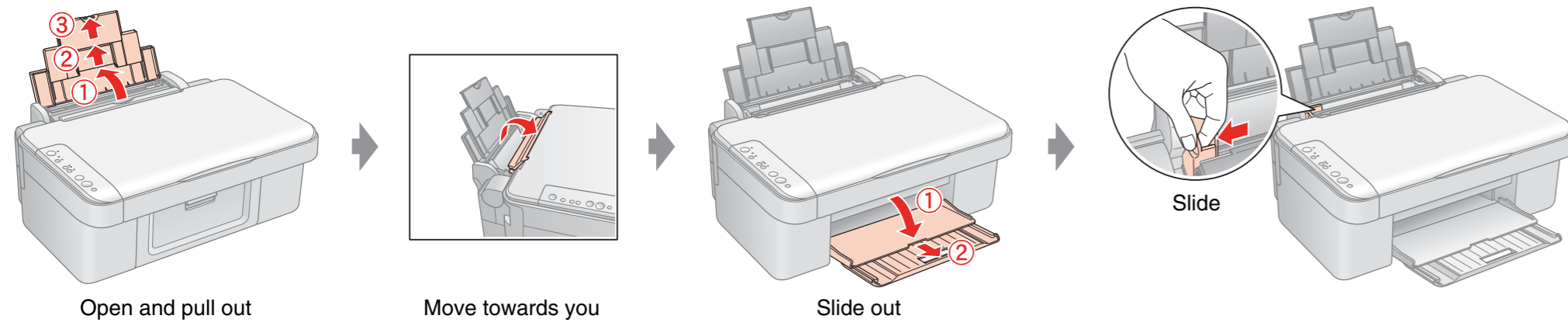
Installation complete.



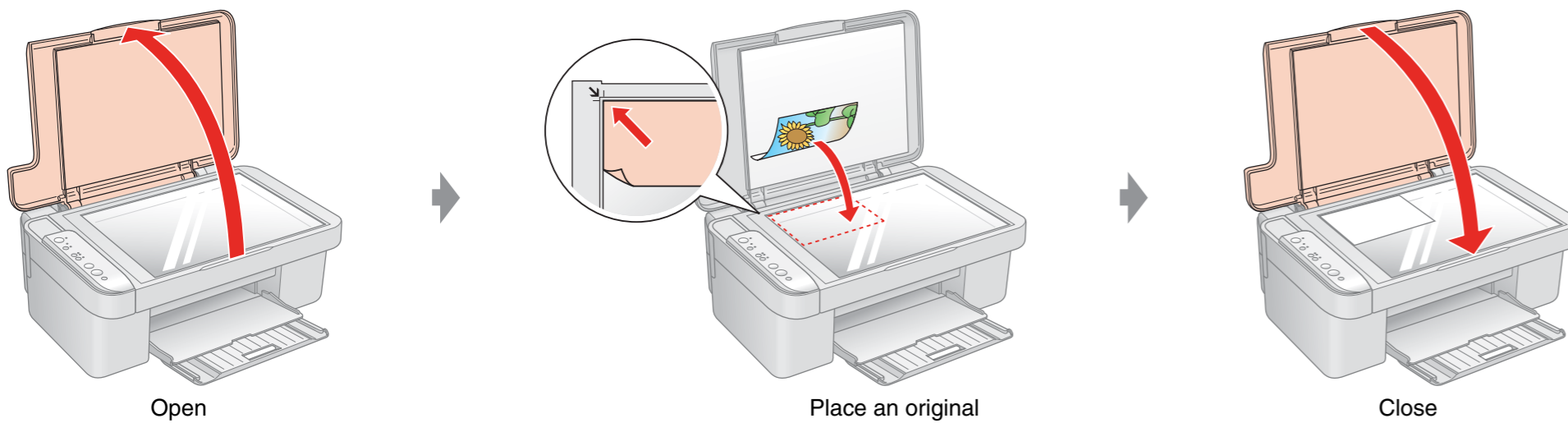
\*410736800\*



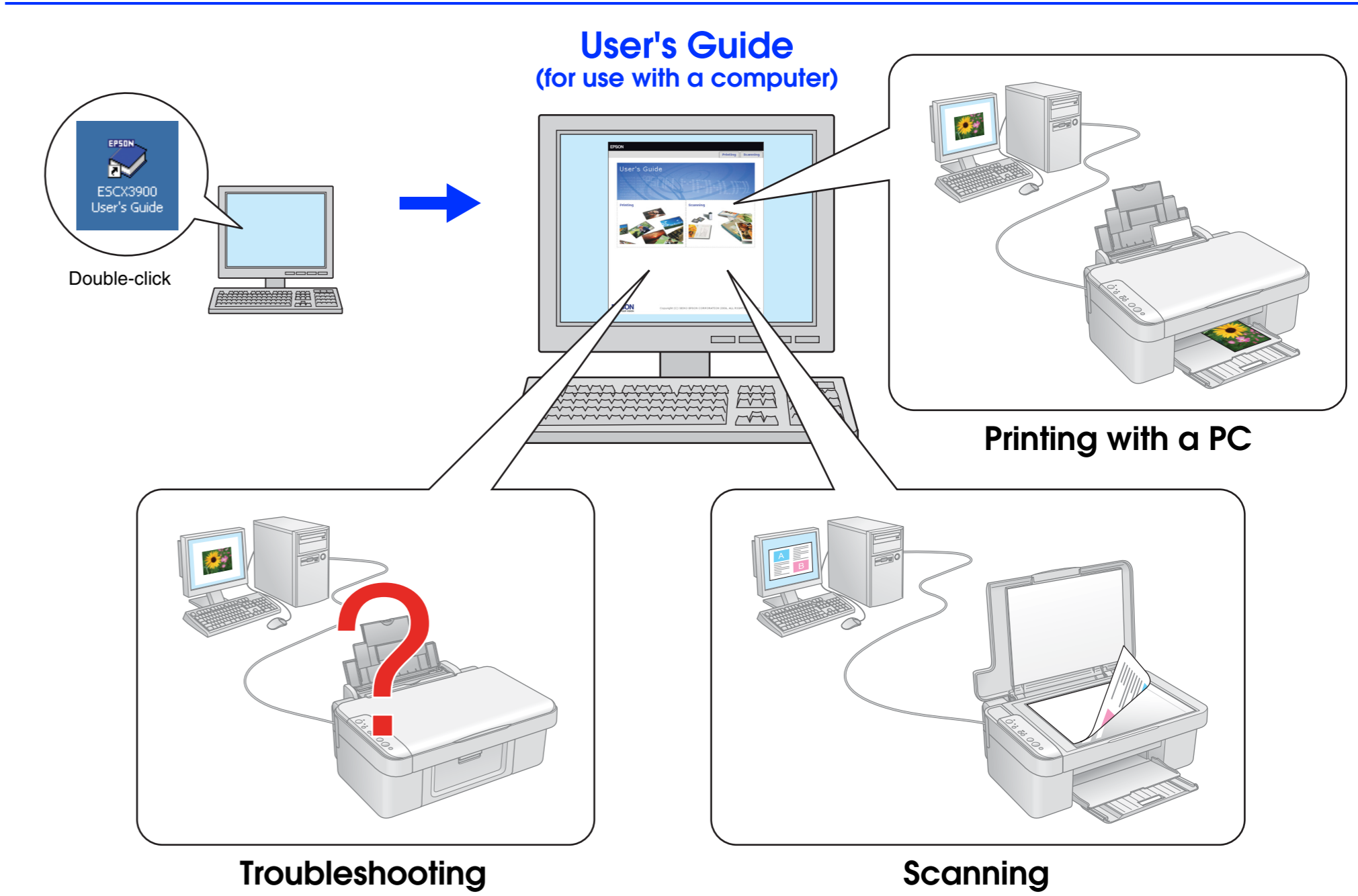
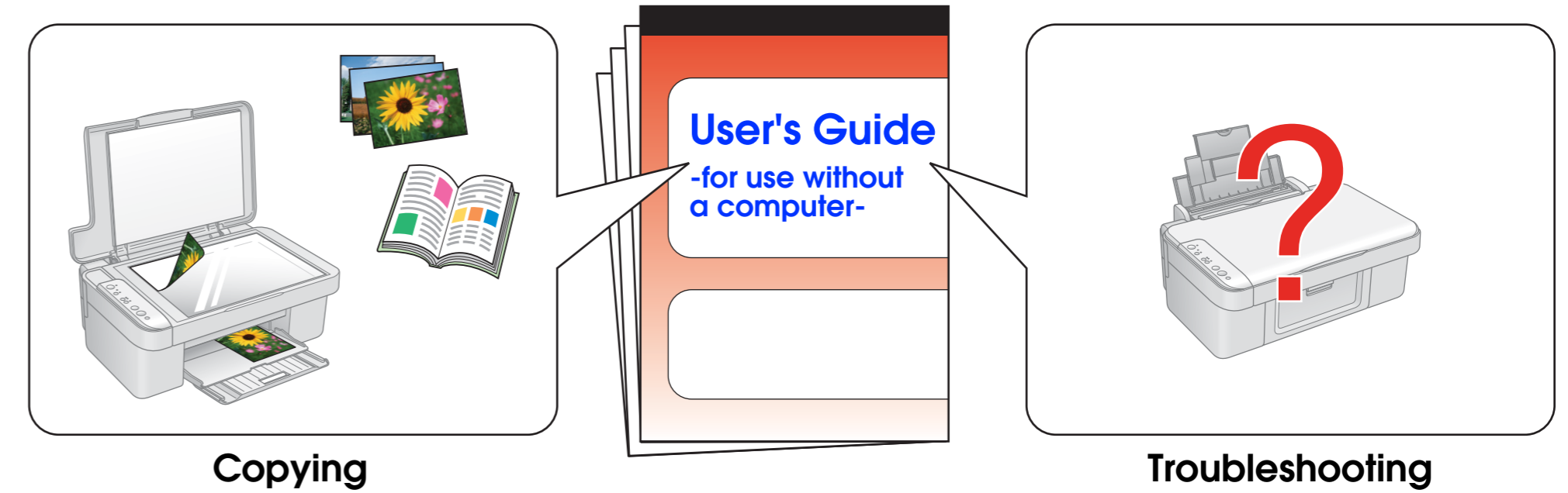
## Loading Paper



## Placing an Original



## Getting More Information



## Safety Instructions

### When placing the Epson Stylus CX

- ❑ Place the Epson Stylus CX near a wall outlet where the plug can be easily unplugged.
- ❑ Avoid locations that are subject to rapid changes in heat or humidity, shocks or vibrations, or dust.
- ❑ Leave enough room around the Epson Stylus CX for sufficient ventilation. Do not block or cover openings in the case or insert objects through the slots.
- ❑ Place the Epson Stylus CX on a flat, stable surface that extends beyond its base in all directions. It will not operate properly if it is tilted or at an angle.
- ❑ Make sure the back of the Epson Stylus CX is at least 10 cm away from the wall.
- ❑ When storing or transporting the Epson Stylus CX, do not tilt it, stand it on its side, or turn it upside down; otherwise ink may leak from the cartridge.

### When choosing a power source

- ❑ Use only the type of power source indicated on the label.
- ❑ Use only the power cord that comes with the Epson Stylus CX. Use of another cord may cause fire or shock. Do not use the cord with any other equipment.
- ❑ Make sure the power cord meets the relevant local safety standards.
- ❑ Do not let the power cord become damaged or frayed.
- ❑ If you use an extension cord with the Epson Stylus CX, make sure the total ampere rating of the devices plugged into the extension cord does not exceed the cord's ampere rating. Also, make sure the total ampere rating of all devices plugged into the wall outlet does not exceed the wall outlet's ampere rating.

### When using the Epson Stylus CX

- ❑ Do not spill liquid on the Epson Stylus CX.
- ❑ Except as specifically explained in your documentation, do not attempt to service the Epson Stylus CX yourself.
- ❑ Unplug the Epson Stylus CX and refer servicing to qualified service personnel under the following conditions: if the power cord or plug is damaged; if liquid has entered the product; if the product has been dropped or the case damaged; if the product does not operate normally or exhibits a distinct change in performance. Adjust only those controls that are covered by the Epson Stylus CX operating instructions.
- ❑ Do not put your hand inside the Epson Stylus CX or touch any cartridges during printing.
- ❑ Do not insert objects into the slots on the Epson Stylus CX.

### When handling ink cartridges

- ❑ Keep ink cartridges out of the reach of children and do not drink the ink.
- ❑ Be careful when you handle used ink cartridges; there may be ink remaining around the ink supply port. If ink gets on your skin, wash it off with soap and water. If it gets in your eyes, flush them immediately with water. If you still have discomfort or vision problems, see a doctor immediately.
- ❑ Do not shake the ink cartridge after removing from the package; this can cause leakage.
- ❑ Do not remove or tear the label on the cartridge; otherwise, ink will leak.