

## Start Here



\*413044200\*

© 2015 Seiko Epson Corporation.  
All rights reserved.  
Printed in XXXXXX

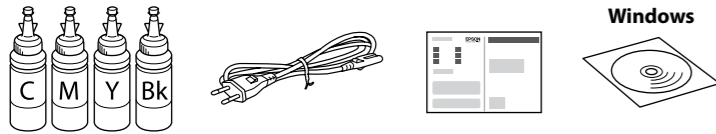
### Read This First

This printer requires careful handling of ink. Ink may splatter when the ink tanks are filled or refilled with ink. If ink gets on your clothes or belongings, it may not come off.

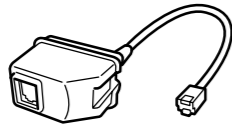


Important; must be observed to avoid damage to your equipment.

## 1



For Users in Australia and New Zealand

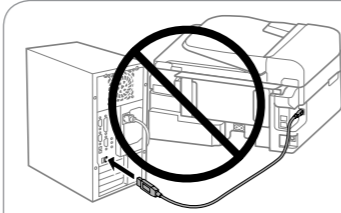


Contents may vary by location.



- Do not open the ink bottle package until you are ready to fill the ink tank. The ink bottle is vacuum packed to maintain its reliability.
- Even if some ink bottles are dented, the quality and quantity of ink are guaranteed, and they can be used safely.

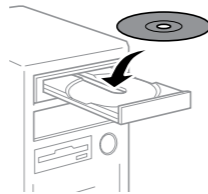
## 2



Do not connect a USB cable unless instructed to do so.

### Windows

Insert the CD and follow the on-screen instructions to finish the setup process.

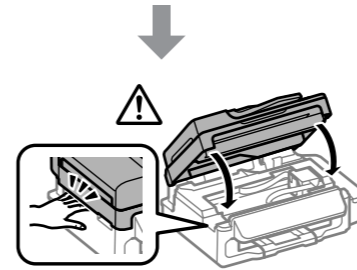
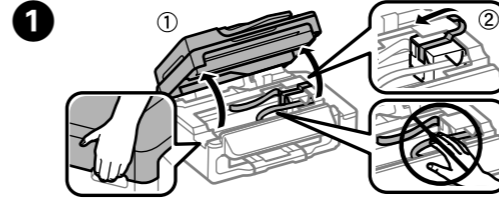


If the Firewall alert appears, allow access for Epson applications.

### Windows (No CD/DVD drive) Mac OSX iOS/Android No PC

Proceed to the next step (Section 3).

## 3

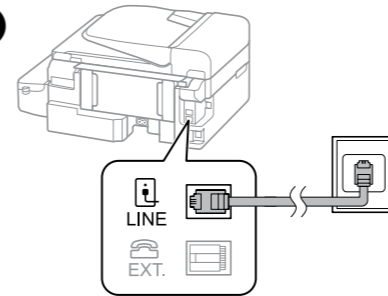


Remove all protective materials.



Never place the printer vertically even when storing or transporting it; otherwise, ink may leak.

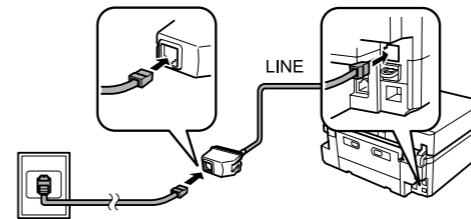
## 2



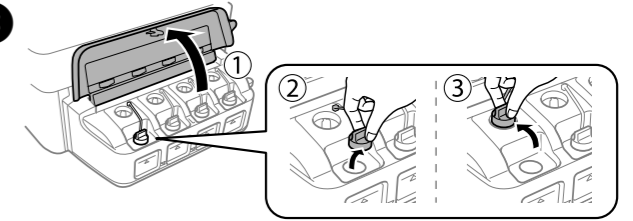
Connect a phone cable to a telephone wall jack and to the LINE port on your product. See the *User's Guide* (PDF) for more details.

### For Users in Australia and New Zealand

- Make sure you connect the noise filter as shown.
- Do not use this filter for any other products.



## 3

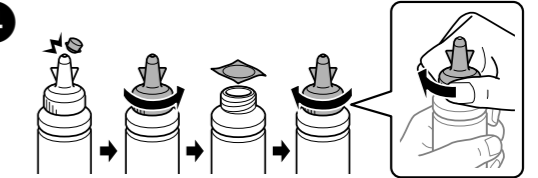


Open the cover, remove and place the cap.



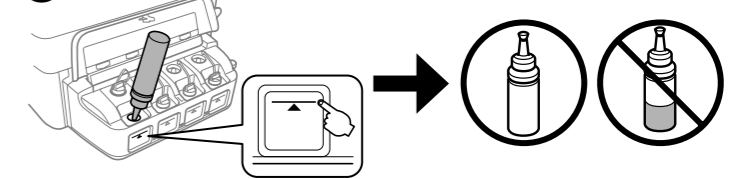
- Use the ink bottles that came with your printer.
- Epson cannot guarantee the quality or reliability of non-genuine ink. The use of non-genuine ink may cause damage that is not covered by Epson's warranties.

## 4



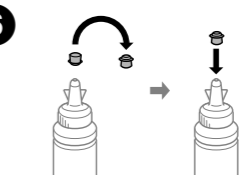
Snap off, remove, and then close tightly.

## 5



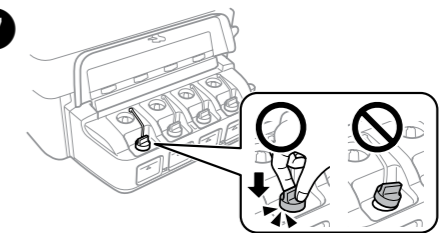
Fill each tank with the correct ink color. Use all of the ink in the bottle.

## 6



Install.

## 7

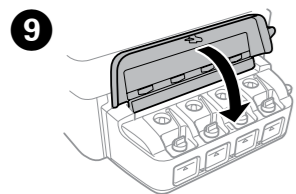


Close securely.

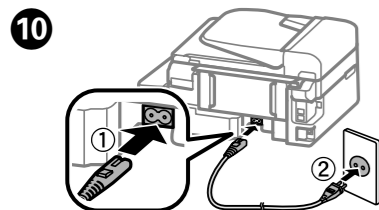
## 8

Repeat steps 3 to 7 for each ink bottle.

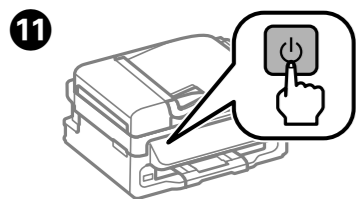




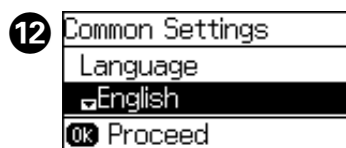
Close.



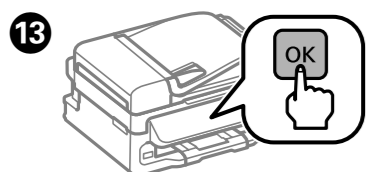
Connect and plug in.



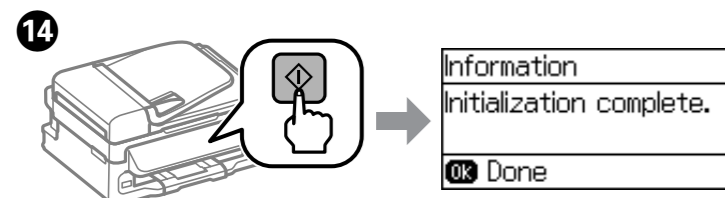
Turn on.



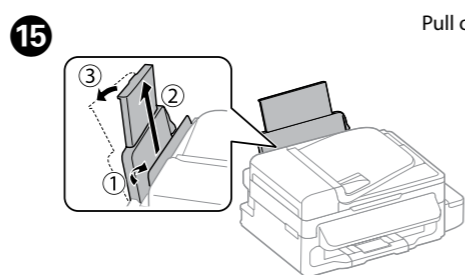
Select a language, country and time.



When the message of seeing the setup manual is displayed, press **OK** for **3 seconds**.



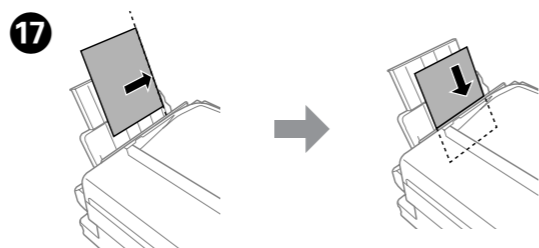
Confirm that the tanks are filled with ink, and then press **◇** to start charging ink. Charging ink takes about 20 minutes.



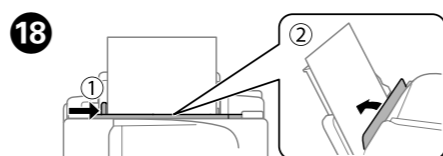
Pull out.



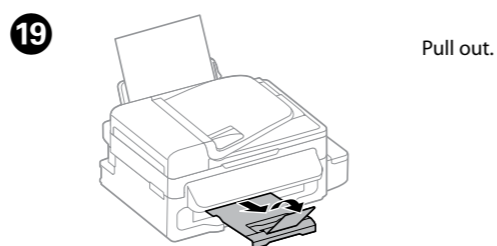
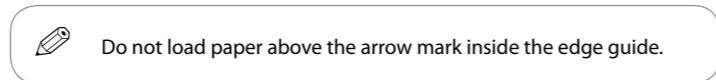
Slide the edge guide to the left.



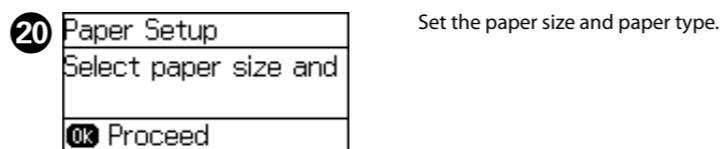
Load paper with the printable side face-up.



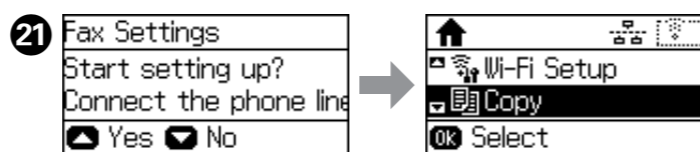
Slide the edge guide then close the feeder guard.



Pull out.



Set the paper size and paper type.



Press **▲** if you want to set up the fax, or press **▼** to set it up later.

## 22 Windows (No CD/DVD drive) Mac OS X



Visit the website to start the setup process, install software, and configure network settings.

## iOS / Android



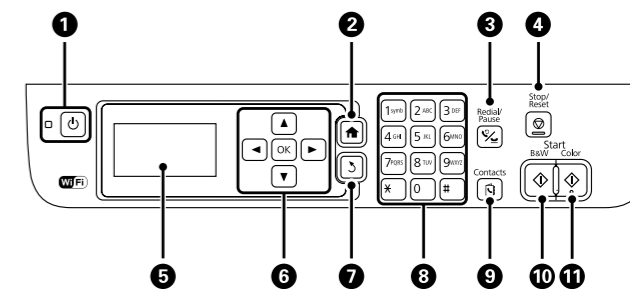
Visit the website to install Epson iPrint application, start the setup process, and configure network settings.

## Epson Connect



Using your mobile device, you can print from any location worldwide to your Epson Connect compatible printer. Visit the website for more information.

## Guide to Control Panel



**1** Turns the printer on or off. Unplug the power cord when the power light is off.

**2** Displays the home screen.

**3** Enter the last dialed number or enter a pause when entering a fax number.

**4** Stops the current operation.

**5** Displays menus and messages.

**6** Press **◀**, **▶**, **▲**, and **▼** to select menus. Press **OK** to confirm your selection or run the selected feature.

**7** Returns to the previous screen.

**8** Enters numbers, characters, and symbols.

**9** Opens the contacts list.

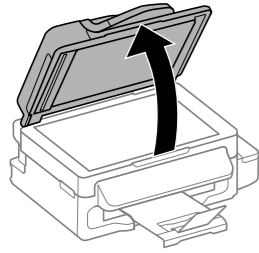
**10** Starts printing, copying, scanning, and faxing in black and white.

**11** Starts printing, copying, scanning, and faxing in color.

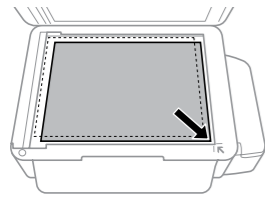


## Copying

- 1** Open the document cover.

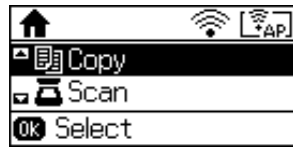


- 2** Place the original.

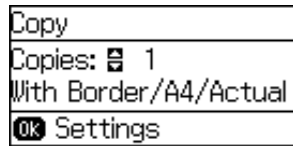


- 3** Close the document cover.

- 4** Select **Copy** on the home screen.



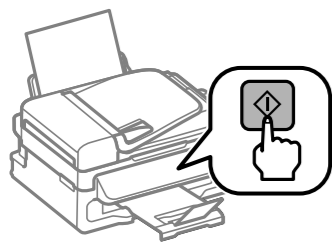
- 5** Press the ▲ and ▼ buttons to enter the number of copies.



- 6** Press the **OK** button. Select **Layout**, and then select the appropriate layout.

- 7** Press the ▼ button, and then make other settings as necessary.

- 8** Press **◆** to start copying.



## Print Quality Help

If you see missing segments or broken lines in your printouts, try the following solutions.

- 1** Print a nozzle check pattern to check if the print head nozzles are clogged. Select **Setup > Maintenance > Print Head Nozzle Check**.

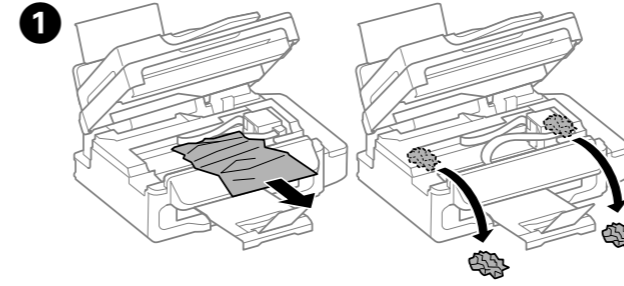
The nozzles are not clogged. Select **Finish**.

If you notice any missing segments or broken lines, go to step **2**.

- 2** Select **Clean the print head** and follow the on-screen instructions.

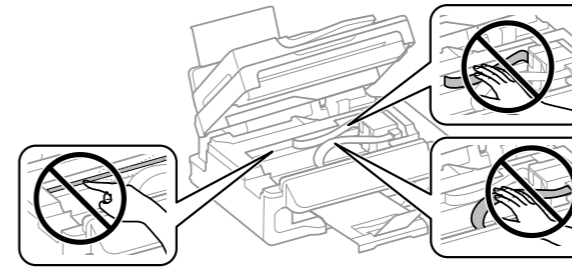
The cleaning uses some ink from all tanks, so run the cleaning only if quality declines on your prints.

## Clearing Paper Jam

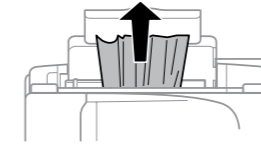


Remove all of the paper inside, including any torn pieces.

- !** Do not touch the white flat cable, translucent part, and ink tubes inside the printer. Doing so may cause a malfunction.

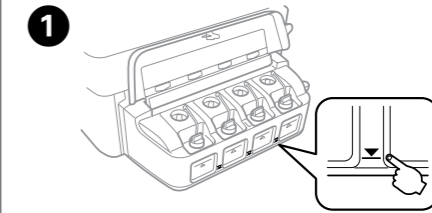


- If paper still remains near the rear paper feed, gently pull it out.



- 2** Press the button displayed on the LCD screen.

## Checking Ink Levels and Refilling Ink

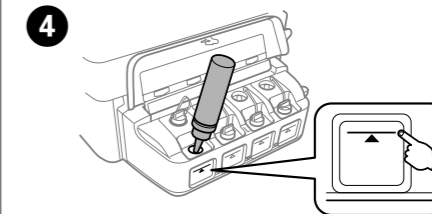


Visually check the ink levels of all ink tanks. If the ink level is below the lower line, go to step **2** to refill the tanks.

- !** Prolonged use of the printer when the ink level is below the lower line could damage the printer. Make sure you visually check the ink levels. The printer's ink-low alert may not be accurate because it is not generated by directly measuring the ink levels in the tanks.

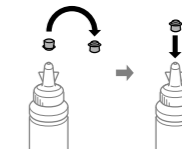
- 2** Select **Setup > Maintenance > Reset Ink Levels**.

- 3** Press **◆**.



Refer to steps **3** to **8** in section 3 of the front page to refill the tanks to the upper line.

- If any ink remains in the ink bottle after filling the ink tank up to the upper line, install the cap securely and store the ink bottle upright for later use.



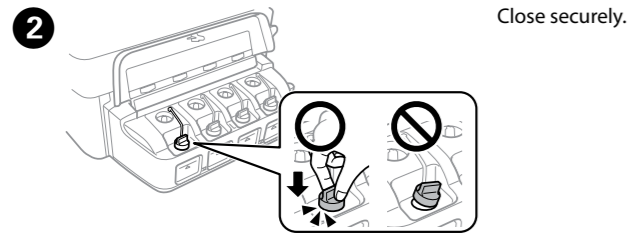
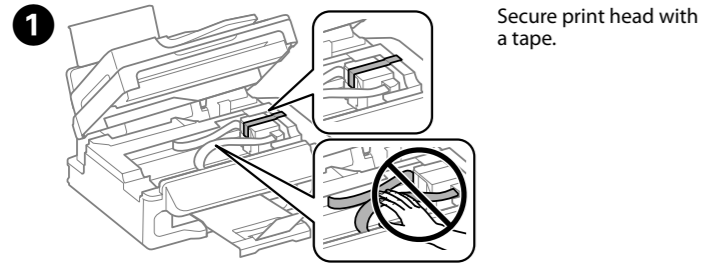
- 5** Press the **OK** button.

- 6** Follow the instructions on the LCD screen to reset the ink levels.

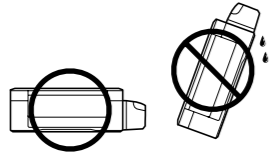
- You can reset the ink levels even if you did not fill the ink to the upper line. However, doing so will cause the printer to generate a false ink-low alert or fail to generate any alert.



## Transporting

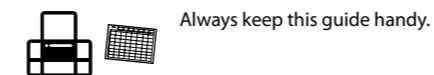
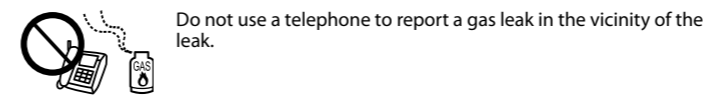
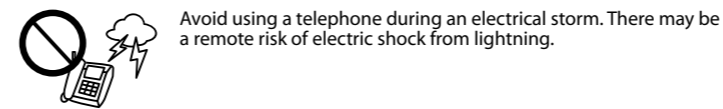
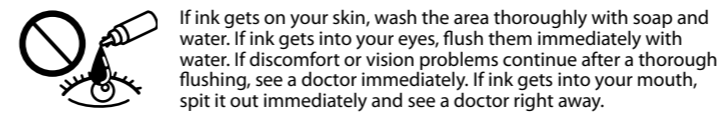
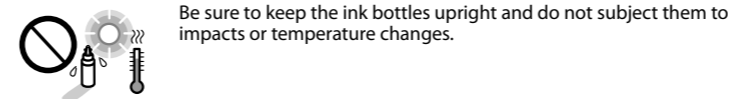
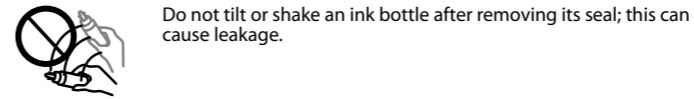
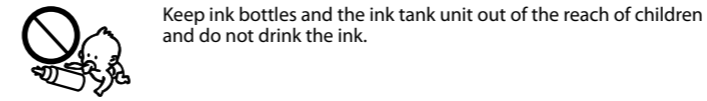
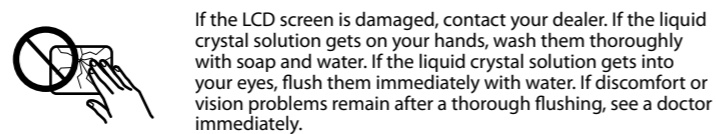
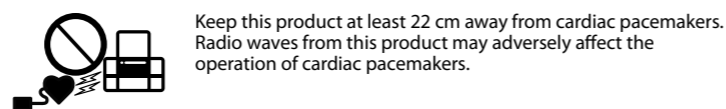
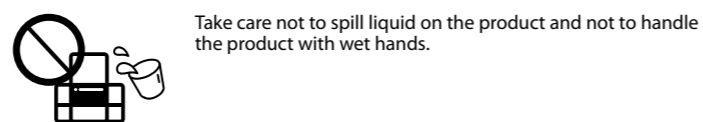
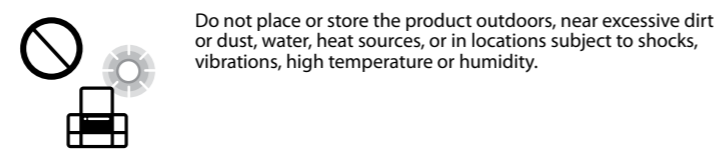
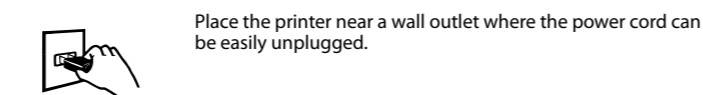
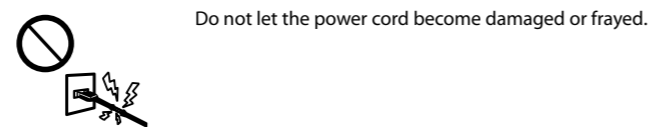
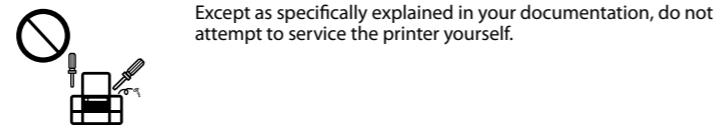
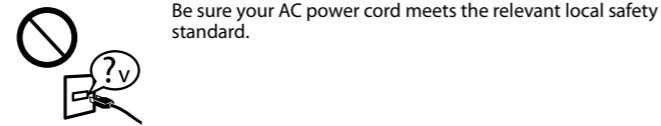
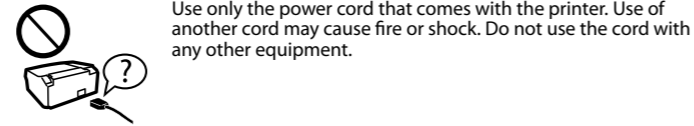


**!** Keep the printer level as you transport it. Otherwise, ink may leak. As you transport the ink bottle, be sure to keep it upright when tightening the cap, and take measures to prevent ink from leaking.



**!** After you move it, remove the tape securing the print head. If you notice a decline in print quality, run a cleaning cycle or align the print head.

## Safety Instructions



## Ink Bottles

BK	C	M	Y
664	664	664	664

**!** Use of genuine Epson ink other than the specified ink could cause damage that is not covered by Epson's warranties.

## Questions?



You can open the *User's Guide* (PDF) and *Network Guide* (PDF) from the shortcut icon, or download the latest versions from the following website.

<http://support.epson.net/>

## For New Zealand Users

### General warning

The grant of a Telepermit for any item of terminal equipment indicates only that Telecom has accepted that the item complies with the minimum conditions for connection to its network. It indicates no endorsement of the product by Telecom, nor does it provide any sort of warranty. Above all, it provides no assurance that any item will work correctly in all respects with another item of Telepermitted equipment of a different make or model, nor does it imply that any product is compatible with all of Telecom's network services.

Telepermitted equipment only may be connected to the EXT telephone port. This port is not specifically designed for 3-wire-connected equipment. 3-wire-connected equipment might not respond to incoming ringing when attached to this port.

The automatic calling functions of this equipment must not be used to cause a nuisance to other Telecom customers.

Windows® is a registered trademark of the Microsoft Corporation.

Mac OS is a trademark of Apple Inc., registered in the U.S. and other countries.

Android™ is a trademark of Google Inc.

The contents of this manual and the specifications of this product are subject to change without notice.

