

Start Here



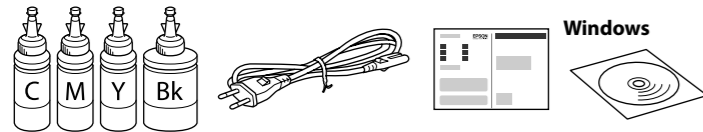
© 2016 Seiko Epson Corporation.
All rights reserved.
Printed in XXXXXX

Read This First

This printer requires careful handling of ink. Ink may splatter when the ink tanks are filled or refilled with ink. If ink gets on your clothes or belongings, it may not come off.

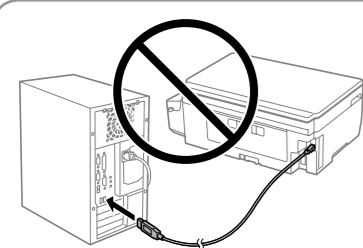
! Important; must be observed to avoid damage to your equipment.

1



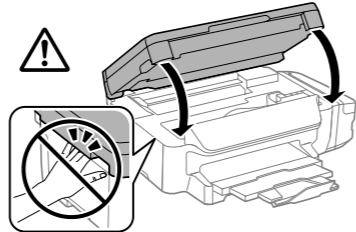
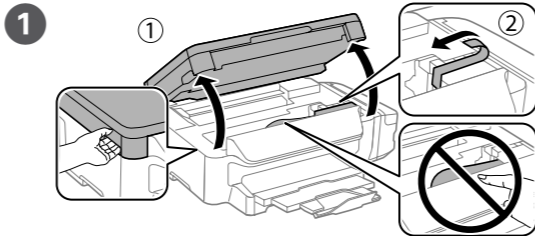
Contents may vary by location.

- Do not open the ink bottle package until you are ready to fill the ink tank. The ink bottle is vacuum packed to maintain its reliability.
- Even if some ink bottles are dented, the quality and quantity of ink are guaranteed, and they can be used safely.



Do not connect a USB cable unless instructed to do so.

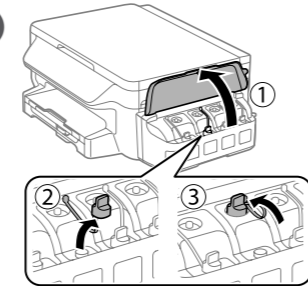
2



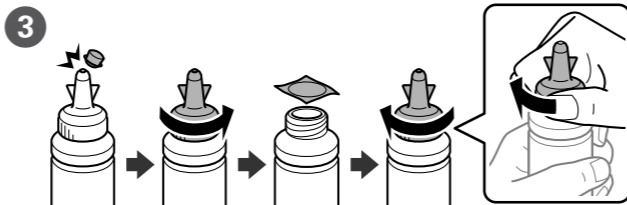
Remove all protective materials.

! Never place the printer vertically even when storing or transporting it; otherwise, ink may leak.

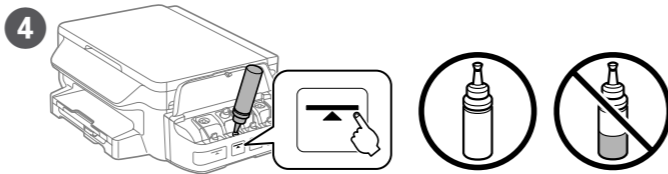
2 Open and remove.



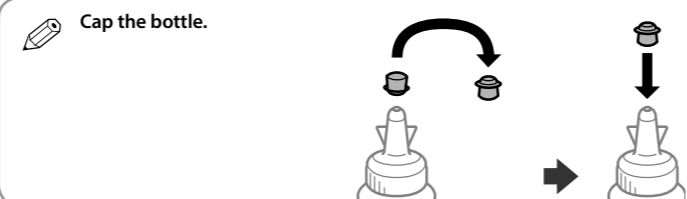
- Use the ink bottles that came with your printer.
- Epson cannot guarantee the quality or reliability of non-genuine ink. The use of non-genuine ink may cause damage that is not covered by Epson's warranties.



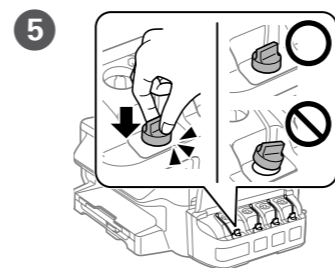
Snap off, remove, and then close tightly.



Fill each tank with the correct ink color. Use all of the ink in the bottle.

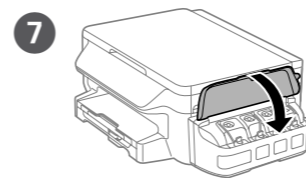


Cap the bottle.

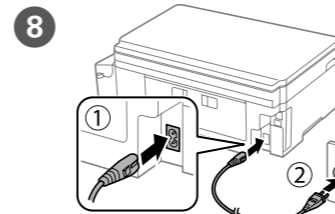


Close securely.

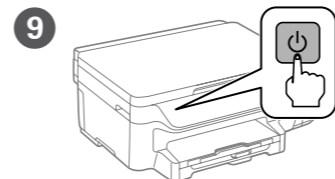
6 Repeat steps 2 to 5 for each ink bottle.



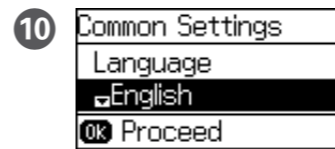
Close.



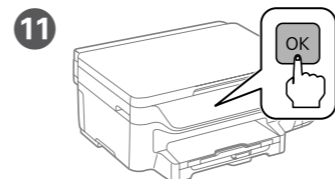
Connect and plug in.



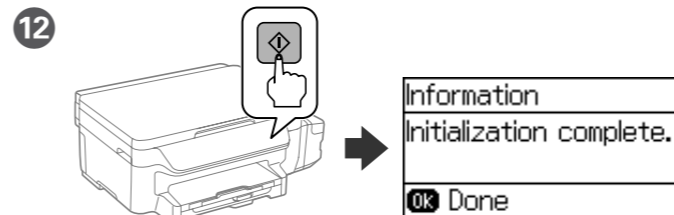
Turn on.



Follow the on-screen instructions.

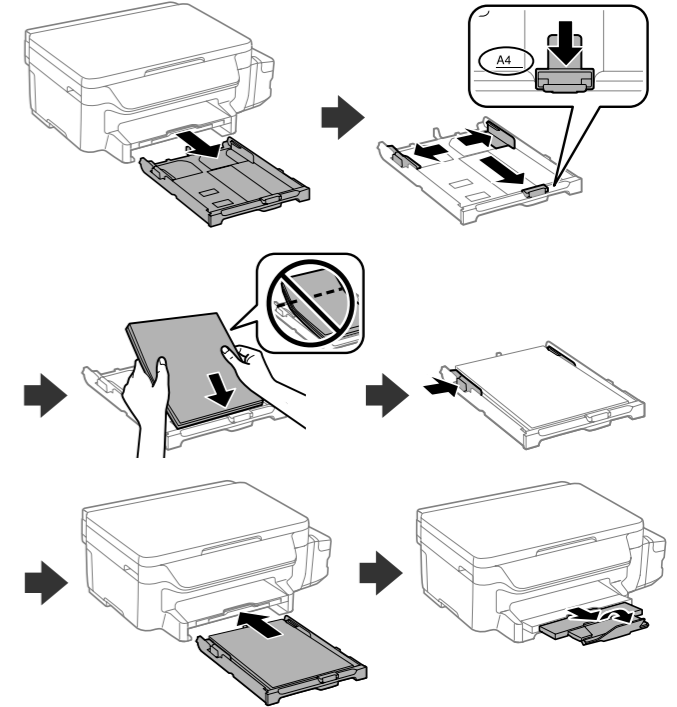


When the message of seeing the setup manual is displayed, press **OK** for 3 seconds.

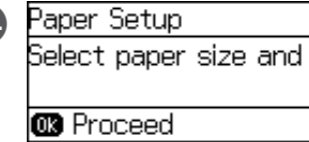


Confirm that the tanks are filled with ink, and then press \diamond to start charging ink. Charging ink takes about 20 minutes.

13 Load paper in the paper cassette with the printable side facing down.

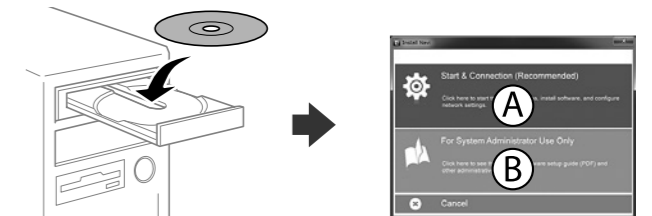


14 Paper Setup Select paper size and type. Set the paper size and paper type.



3

Windows



Insert the CD, and then select A or B.

! If the Firewall alert appears, allow access for Epson applications.

No CD/DVD drive Mac OS X



Visit the website to start the setup process, install software, and configure network settings.

iOS / Android

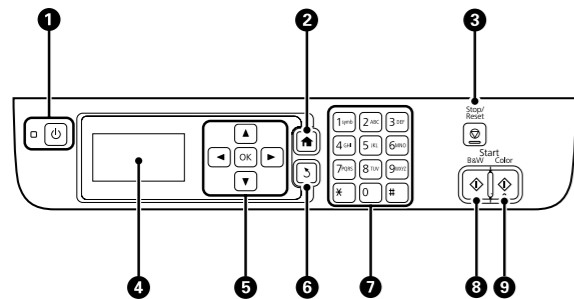


Epson Connect

➔ <https://www.epsonconnect.com/>

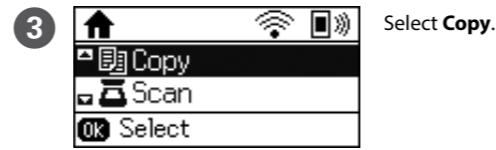
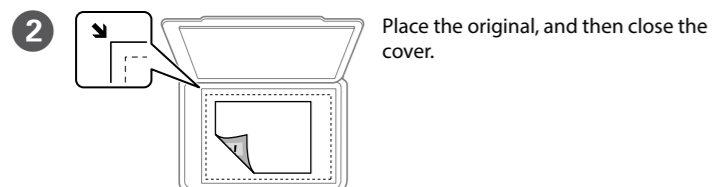
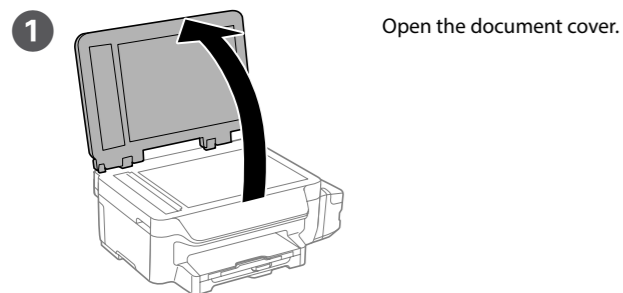
Using your mobile device, you can print from any location worldwide to your Epson Connect compatible printer. Visit the website for more information.

Guide to Control Panel



1	Turns the printer on or off. Unplug the power cord when the power light is off.
2	Displays the home screen.
3	Stops the current operation.
4	Displays menus and messages.
5	Press ◀, ▶, ▲, ▼, and ▼ to select menus. Press the OK button to confirm your selection or run the selected feature.
6	Returns to the previous screen.
7	Enters numbers, characters, and symbols.
8	Starts printing, copying and scanning in black and white.
9	Starts printing, copying and scanning in color.

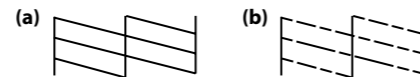
Copying



- 4 Press the ▲ and ▼ buttons to enter the number of copies.
- 5 Press the OK button. Select **Layout**, and then select the appropriate layout.
- 6 Press the ▼ button, and then make other settings as necessary.
- 7 Press ◊ to start copying.

Print Quality Help

- 1 If you see missing segments or broken lines in your printouts, print a nozzle check pattern to check if the print head nozzles are clogged. Select **Setup > Maintenance > Print Head Nozzle Check**. If all lines are printed as shown in (a), the nozzles are not clogged. Select **Finish**. If you notice any missing segments or broken lines as shown in (b), go to step 2.

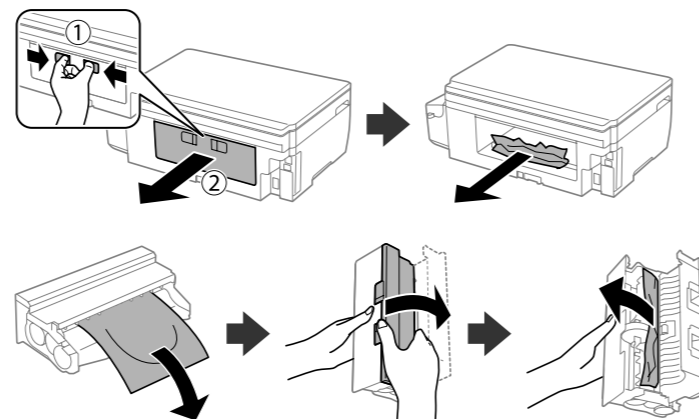


- 2 Select **Clean the print head** and follow the on-screen instructions.

The cleaning uses some ink from all tanks, so run the cleaning only if quality declines on your prints.

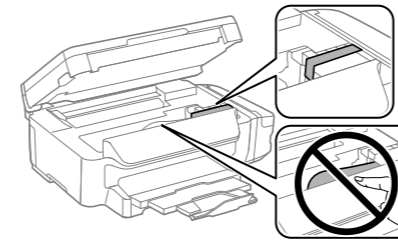
Clearing Paper Jam

Remove all of the paper inside, including any torn pieces, and then press the button displayed on the LCD screen.

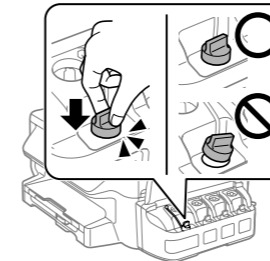


Transporting

- 1 Secure print head with a tape.

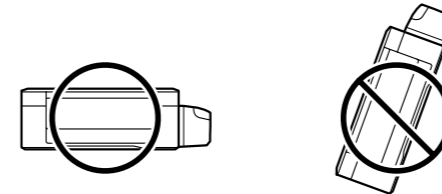


- 2 Close securely.



- 3 Pack the printer in its box, using the protective materials.

Keep the printer level as you transport it. Otherwise, ink may leak. As you transport the ink bottle, be sure to keep it upright when tightening the cap, and take measures to prevent ink from leaking.



After you move it, remove the tape securing the print head. If you notice a decline in print quality, run a cleaning cycle or align the print head.

Ink Bottles

BK	C	M	Y
774	664	664	664

Use of genuine Epson ink other than the specified ink could cause damage that is not covered by Epson's warranties.

Questions?

You can open the *User's Guide* (PDF) from the shortcut icon, or download the latest versions from the following website.

➔ <http://support.epson.net/>

Safety Instructions

Use only the power cord that comes with the printer. Use of another cord may cause fire or shock. Do not use the cord with any other equipment.

Be sure your AC power cord meets the relevant local safety standard.

Except as specifically explained in your documentation, do not attempt to service the printer yourself.

Do not let the power cord become damaged or frayed.

Place the printer near a wall outlet where the power cord can be easily unplugged.

Do not place or store the product outdoors, near excessive dirt or dust, water, heat sources, or in locations subject to shocks, vibrations, high temperature or humidity.

Take care not to spill liquid on the product and not to handle the product with wet hands.

Keep this product at least 22 cm away from cardiac pacemakers. Radio waves from this product may adversely affect the operation of cardiac pacemakers.

If the LCD screen is damaged, contact your dealer. If the liquid crystal solution gets on your hands, wash them thoroughly with soap and water. If the liquid crystal solution gets into your eyes, flush them immediately with water. If discomfort or vision problems remain after a thorough flushing, see a doctor immediately.

Keep ink bottles and the ink tank unit out of the reach of children and do not drink the ink.

Do not tilt or shake an ink bottle after removing its seal; this can cause leakage.

Be sure to keep the ink bottles upright and do not subject them to impacts or temperature changes.

If ink gets on your skin, wash the area thoroughly with soap and water. If ink gets into your eyes, flush them immediately with water. If discomfort or vision problems continue after a thorough flushing, see a doctor immediately. If ink gets into your mouth, see a doctor right away.

Always keep this guide handy.

To prevent ink from leaking, keep the product level when you move it or transport it. When transporting the ink bottle, keep it upright with the cap tightened, and take measures to prevent ink from leaking.

Windows® is a registered trademark of the Microsoft Corporation.
Mac OS is a trademark of Apple Inc., registered in the U.S. and other countries.
Android™ is a trademark of Google Inc.

The contents of this manual and the specifications of this product are subject to change without notice.

