

# LQ-2190 Start Here



**EPSON**  
EXCEED YOUR VISION

## Unpacking

**1**

Remove all protective tape

Start Here

It may come attached to the printer in some countries. The shape of the plug may vary by location.

Hook

Raise to set

## Assembling the Printer

**2** **Caution:** Do not touch the white cable inside the printer.

Slide the print head to the ribbon installation position (the indented portion of the paper tension unit) by hand.

ribbon guide

Insert the ribbon guide to the pin of the ribbon cartridge.

Tense the ribbon

Insert until it clicks

Lift the ribbon guide of the ribbon cartridge.

Tense

Slide the print head from side to side to make sure it moves smoothly.

Attach

Close

Continued

## Connecting the Printer to Your Computer

**3** **Caution:**

- The interface cable connectors have only one correct orientation. Make sure the orientation of the connector is correct before inserting it into the appropriate port.
- Do not connect or disconnect the printer while it is turning on.

### USB

Connect firmly

Connect firmly

### IEEE1284 (PARALLEL)

Connect firmly

Fasten the screw

Connect firmly and fasten

## Connecting the Power Cord

**4**

Confirm the **○** (OFF)

Continued on back

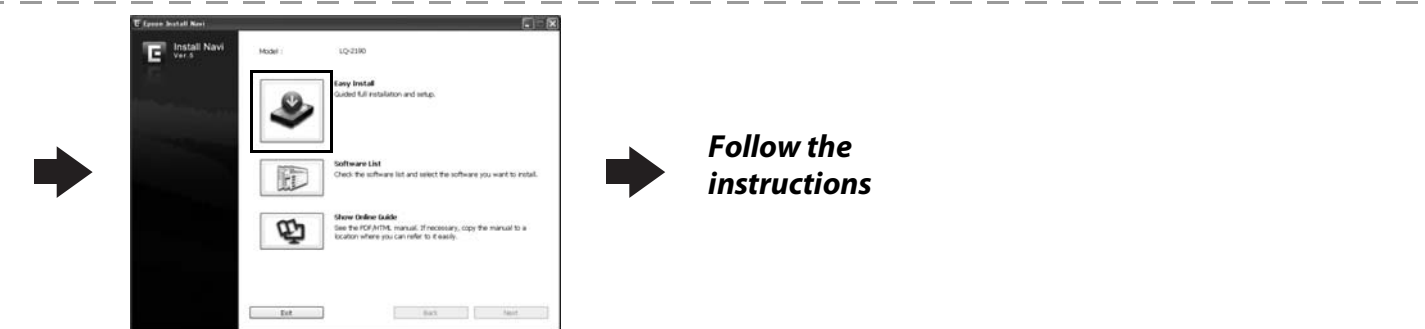
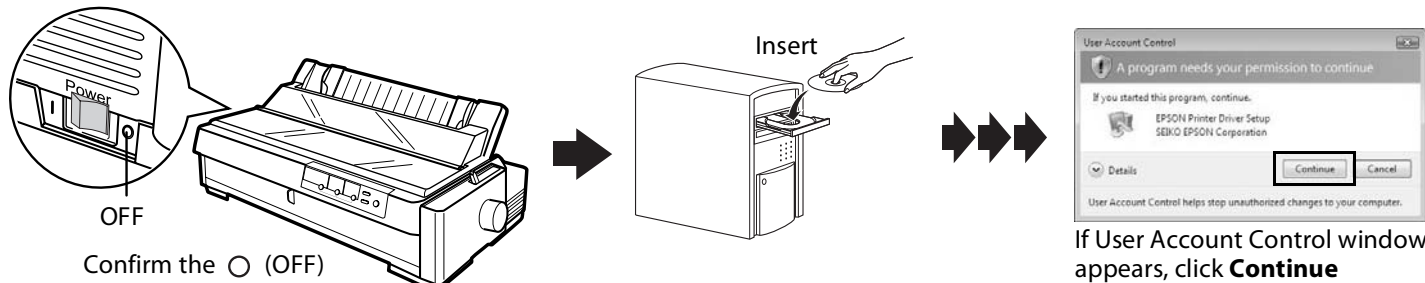
## Installing the Printer Software

**5** **Note:**  
Installing the printer software may require administrator privileges. If you have problems, ask your administrator for more information.

### For Windows 8 users

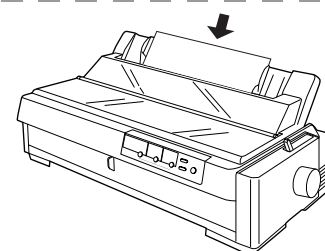
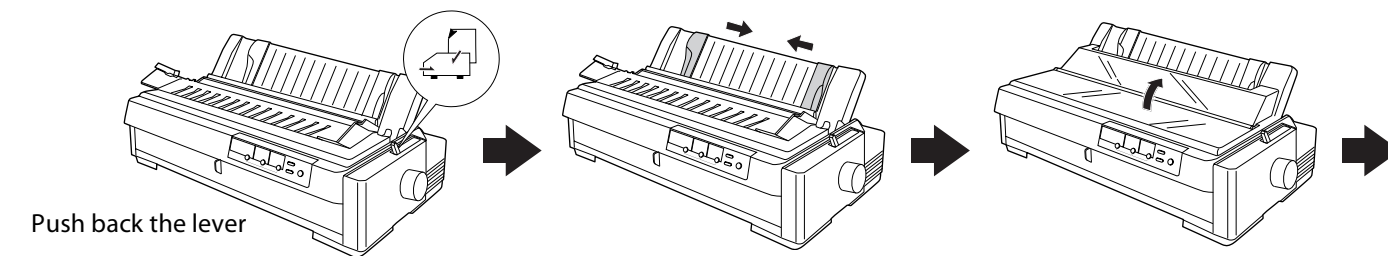
You can download the printer software and the utility software (EPSON Status Monitor3) from the Epson web site. Download the software to any directory on your computer, and start installing it.  
<http://www.epson.com>

### For Windows 7/Vista/XP/2000 users

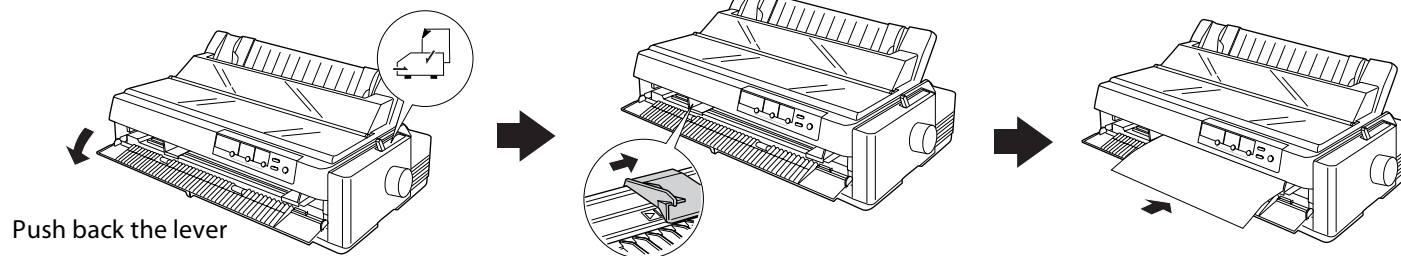


## Printing on single sheets

### Using the top paper slot

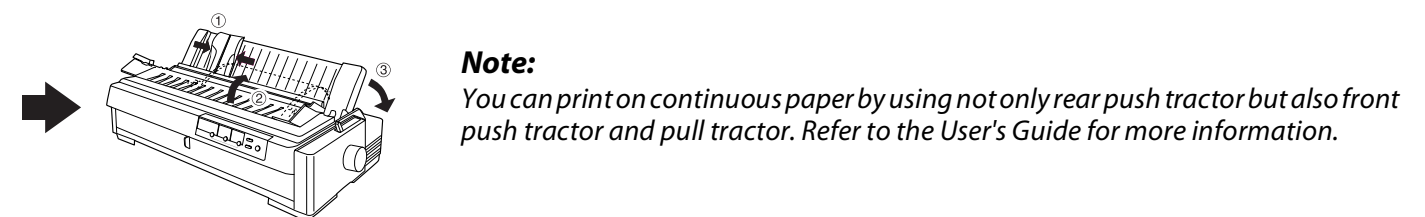
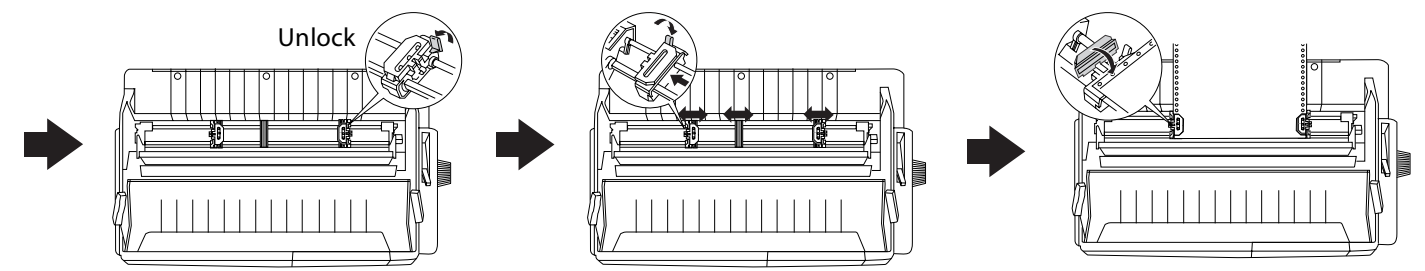
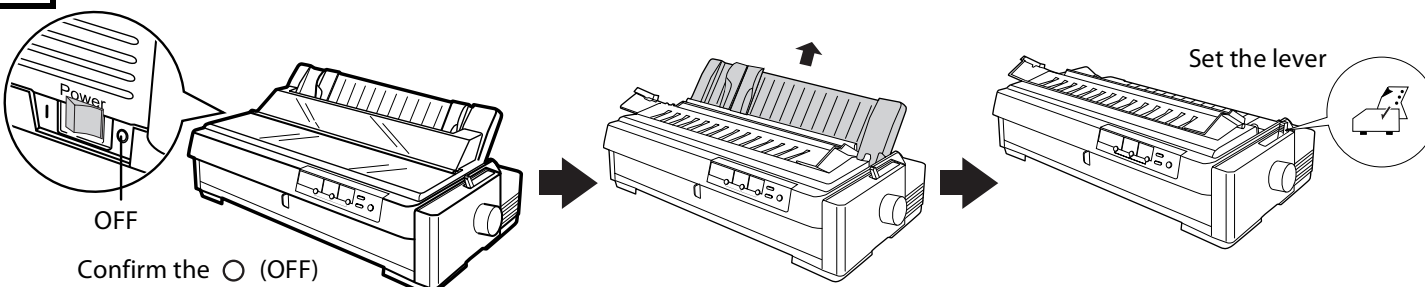


### Using the front paper slot



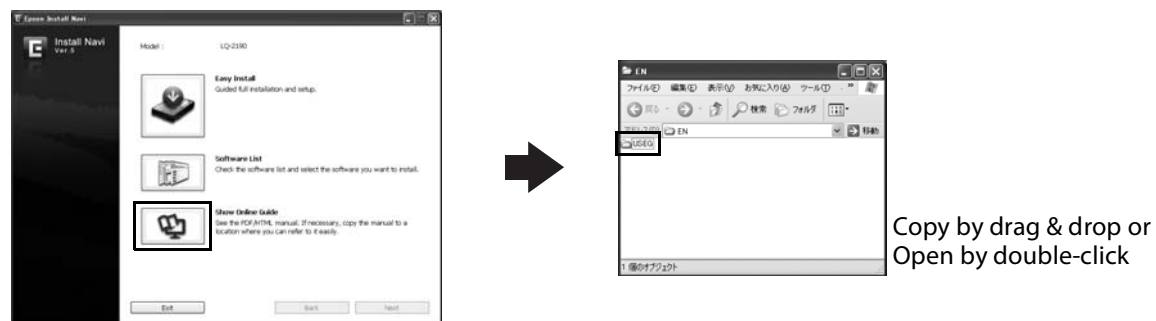
## Loading Paper

### 6 Printing continuous paper with the rear push tractor



## 7 Now setup is finished and the printer is ready.

For detailed information about the printer and troubleshooting, refer to the User's Guide.



If you cannot find the information you require in the User's Guide, visit our Web site:

<http://www.epson.com>

No part of this publication may be reproduced, stored in a retrieval system, or transmitted in any form or by any means, electronic, mechanical, photocopying, recording, or otherwise, without the prior written permission of Seiko Epson Corporation. No patent liability is assumed with respect to use of the information contained herein. Neither is any liability assumed for damages resulting from the use of the information contained herein. Neither Seiko Epson Corporation nor its affiliates shall be liable to the purchaser of this product or third parties for damages, losses, costs, or expenses incurred by the purchaser or third parties as a result of: accident, misuse, or abuse of this product or unauthorized modifications, repairs, or alterations to this product, or (excluding the U.S.) failure to strictly comply with Seiko Epson Corporation's operating and maintenance instructions. Seiko Epson Corporation and its affiliates shall not be liable against any damages or problems arising from the use of any options or any consumable products other than those designated as Original Epson Products or Epson Approved Products by Seiko Epson Corporation. EPSON and EXCEED YOUR VISION are registered trademarks of Seiko Epson Corporation. Microsoft®, Windows®, and Windows Vista® are registered trademarks of Microsoft Corporation in the United States and/or other countries.

**General Notice:** Other product names used herein are for identification purposes only and may be trademarks of their respective owners. Epson disclaims any and all rights in those marks.

The contents of this manual are subject to change without notice.

Copyright © 2012 Seiko Epson Corporation. All rights reserved.

Printed in XXXXXX

Continued