

# EPSON DFX-9000 Start Here



## Unpacking

**1**

34kg  
Carrying the printer requires two people to lift it as shown above.

1 Start Here  
2 Unpacking

## Understanding Safety Precautions

**2**

Read all of these safety instructions before using the printer. In addition, follow all warnings and instructions marked on the printer itself.

### Hot Parts Caution Symbol

This symbol is placed on the print head to indicate that it may be hot. Never touch this part just after the printer has been used. Let it cool for a few minutes before touching it.

### Important Safety Instructions

**Caution:** Be sure the AC power cord meets the relevant local safety standards.

- Use only the type of power source indicated on the printer's label.
- Connect all equipment to properly grounded power outlets.
- Do not use a damaged or frayed power cord.
- If you use an extension cord with the printer, make sure the total ampere rating of all devices plugged into the extension cord does not exceed the cord's ampere rating. Also, make sure the total ampere of all devices plugged into the wall outlet does not exceed the wall outlet's ampere rating.
- Unplug the printer before cleaning it, and always clean it with a piece of damp cloth only.
- Do not spill liquid onto the printer.
- Except as specifically explained in this guide, do not attempt to service the printer yourself.
- Unplug the printer and refer servicing to qualified service personnel under the following conditions:
  - i. If the power cord or plug is damaged.
  - ii. If liquid has entered the printer.
  - iii. If the printer has been dropped or the cabinet damaged.
  - iv. If the printer does not operate normally or exhibits a distinct change in performance.
- If you plan to use the printer in Germany, observe the following:  
To provide adequate short-circuit protection and over-current protection for this printer, the building installation must be protected by a 10- or 16-amp circuit breaker.

**Note for German-speaking users:**  
Bei Anschluss des Druckers an die Stromversorgung muss sichergestellt werden, dass die Gebäudeinstallation mit einer 10 A- oder 16 A-Sicherung abgesichert ist.

### Choosing a Place for the Printer

- Do not place the printer on an unstable surface or near a radiator or heat source.
- Do not block or cover the slots and openings in the printer's cabinet, and do not insert objects through the slots.
- Place the printer on a flat, stable surface. The printer will not operate properly if it is tilted or placed at an angle.
- Place the printer where you can easily connect it to a network interface cable, if necessary.
- Leave adequate room around the printer for easy operation and maintenance.
- Avoid using storing the printer in places subject to rapid changes in temperature and humidity. Keep it away from direct sunlight, strong light, heat sources, or excessive moisture or dust.
- Avoid places subject to shocks and vibrations.
- Place the printer near a wall outlet where you can easily unplug the power cord.
- Keep the entire computer system away from potential sources of electromagnetic interference, such as loudspeakers or the base units of cordless telephones.
- Avoid electrical outlet controlled by wall switches or automatic timers. An interruption in power can erase information in the memory of your printer or computer. Also avoid outlets on the same circuit as large motors or other appliances that can cause voltage fluctuations.
- Use a grounded power outlet; do not use an adapter plug.
- If you plan to use a printer stand, follow these guidelines:
  - Use a stand that can support at least 34 kg (74 lb).
  - Never use a stand that tilts the printer. The printer should always be kept level.

Position your printer's power cord and interface cable so they do not interfere with paper feeding. If possible, secure the cables to a leg of the printer stand.

## Installing the Ribbon Cartridge

**3**

Open  
Set to the mark  
Remove  
Insert  
Set unit it clicks  
Remove  
Insert  
Slide from side to side  
Close

## Connecting the Power Cord

**4**

Do not turn on the printer  
Connect  
Plug in

No part of this publication may be reproduced, stored in a retrieval system, or transmitted in any form or by any means, electronic, mechanical, photocopying, recording, or otherwise, without the prior written permission of Seiko Epson Corporation. No patent liability is assumed with respect to use of the information contained herein. Neither is any liability assumed for damages resulting from the use of the information contained herein.

Neither Seiko Epson Corporation nor its affiliates shall be liable to the purchaser of this product or third parties for damages, losses, costs, or expenses incurred by the purchaser or third parties as a result of: accident, misuse, or abuse of this product or unauthorized modifications, repairs, or alterations to this product, or (excluding the U.S.) failure to strictly comply with Seiko Epson Corporation's operating and maintenance instructions.

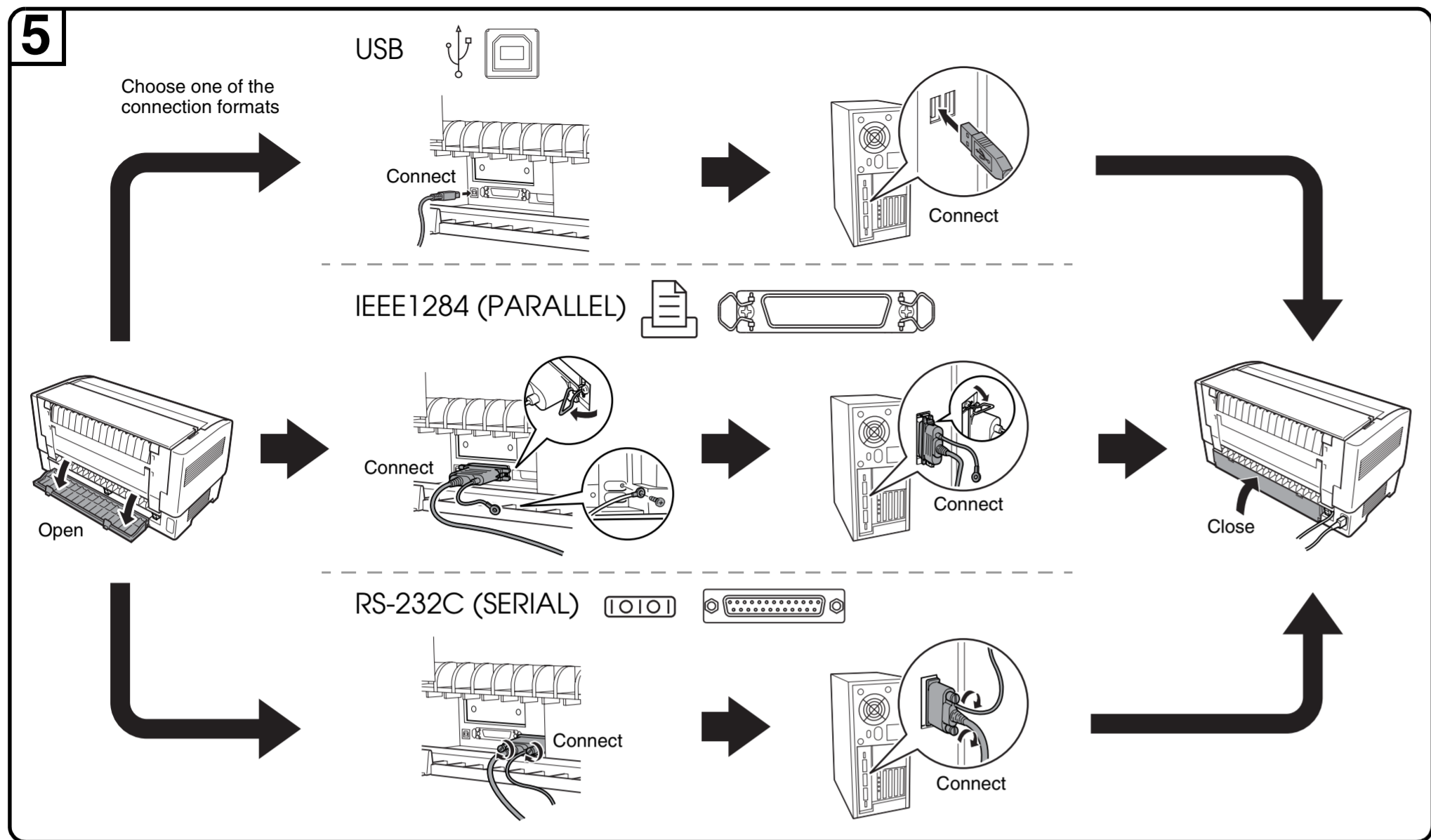
Seiko Epson Corporation and its affiliates shall not be liable against any damages or problems arising from the use of any options or any consumable products other than those designated as Original Epson Products or Epson Approved Products by Seiko Epson Corporation.

EPSON is a registered trademark of Seiko Epson Corporation.

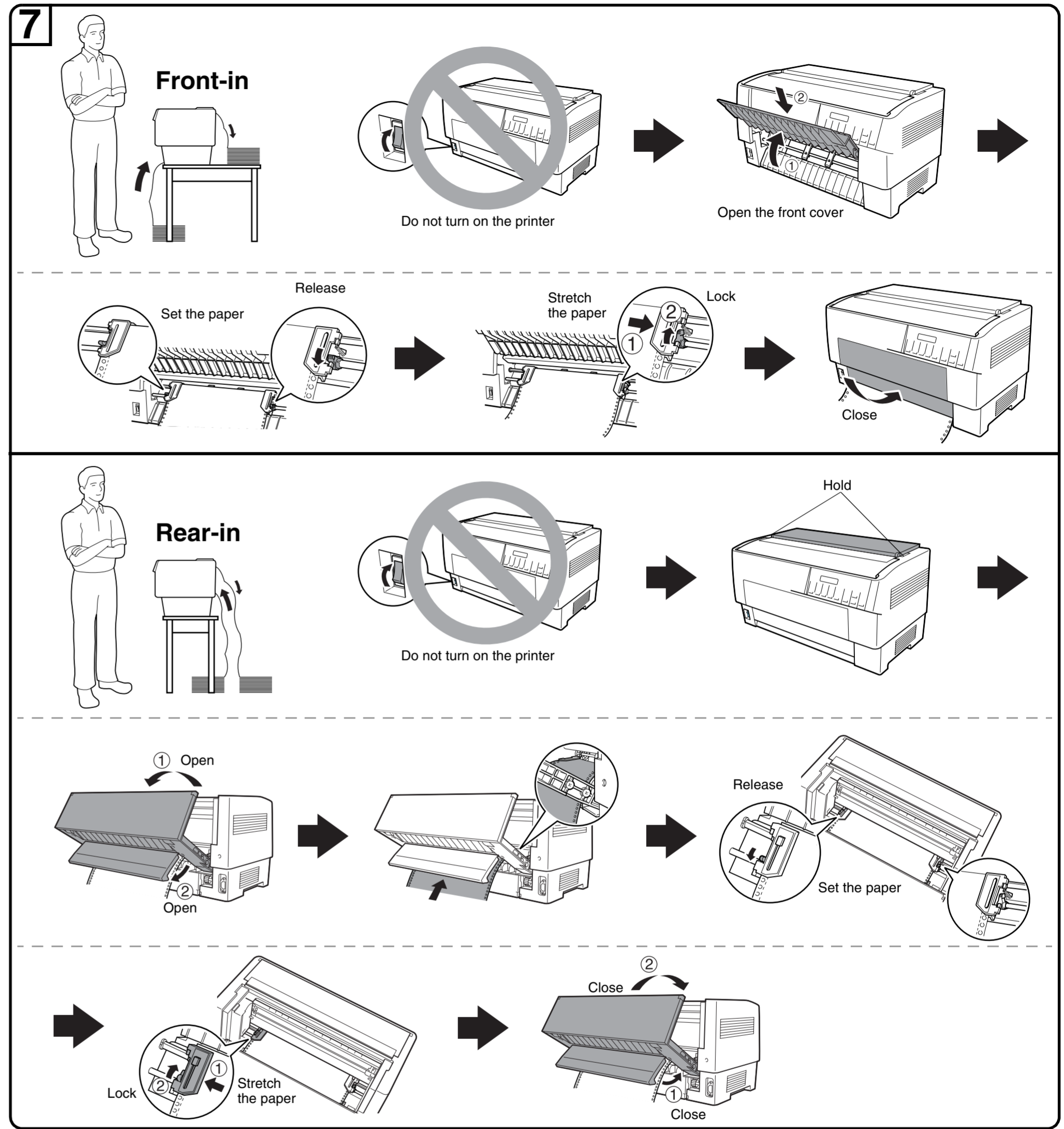
Microsoft®, Windows®, Windows Vista®, and Windows NT® are registered trademarks of Microsoft Corporation in the United States and/or other countries.

**General Notice:** Other product names used herein are for identification purposes only and may be trademarks of their respective owners. Epson disclaims any and all rights in those marks.

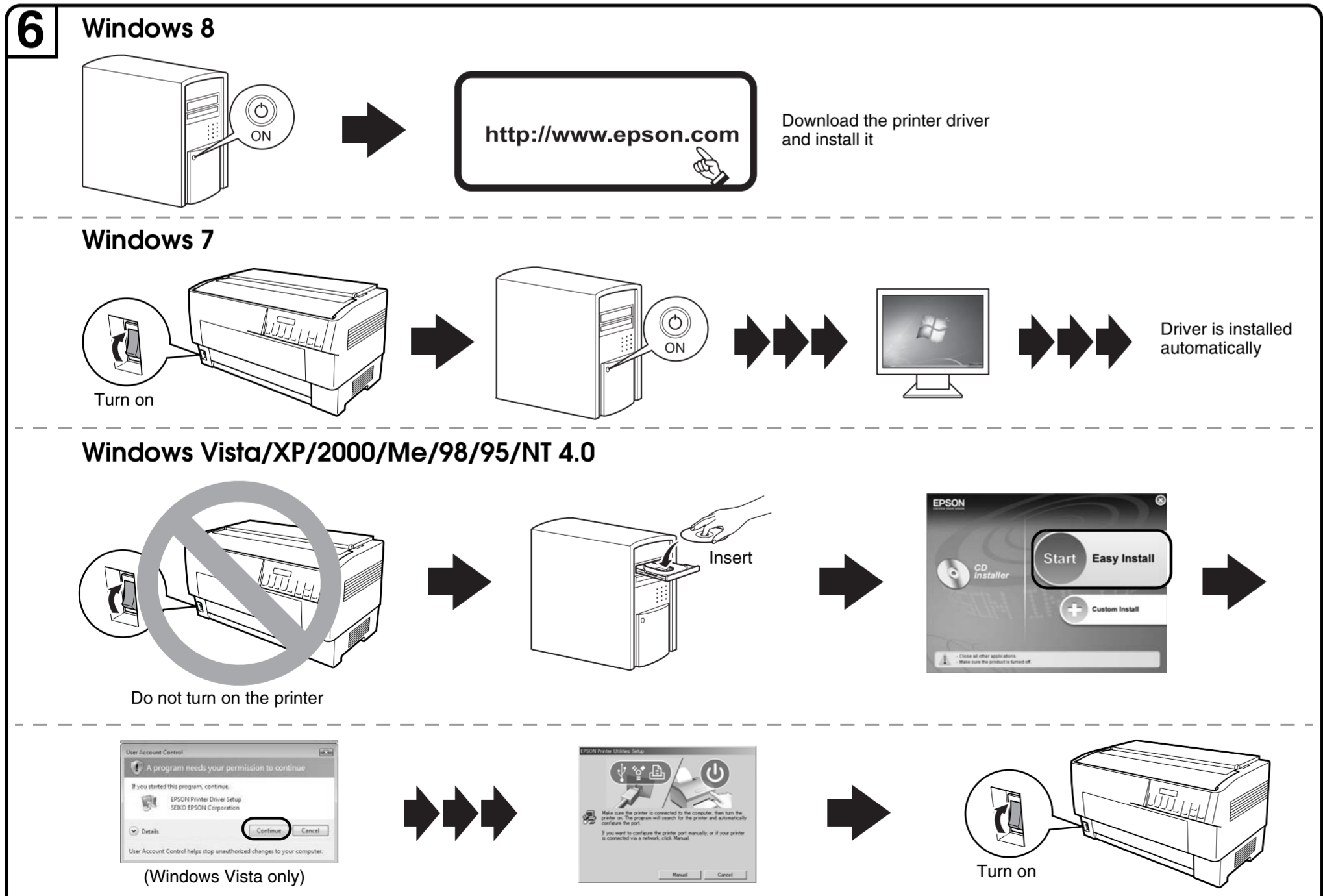
# Connecting the Printer to Your Computer



# Loading Paper



# Installing the Printer Software



**Note:**

- Installing the printer software may require administrator privileges. If you have problems, ask your administrator for more information.
- The Windows CD may be required when you install the printer software. If prompted, follow the on-screen instructions and insert the Windows CD.

**8**

Setup is finished and the printer is ready.

For detailed information about the printer, refer to the Reference Guide on the CD provided.

If you have any trouble, visit our website, noted below.

<http://www.epson.com>