

Start Here

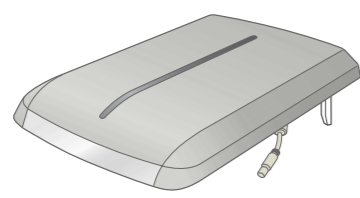
EPSON Perfection™ 4990 Photo

1 Unpack Your Scanner

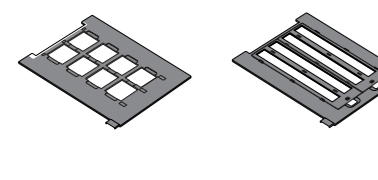
- 1 Make sure you have all the accessories shown below for your EPSON® scanner:



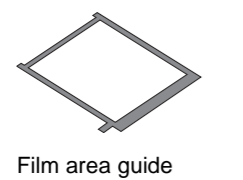
Perfection 4990 Photo scanner



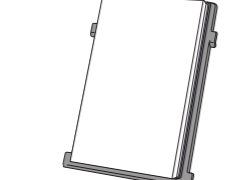
Perfection 4990 Photo document cover (cover includes film adapter)



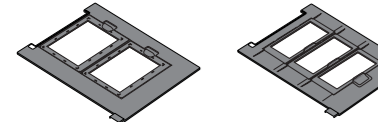
Film holders



Film area guide (packed with reflective document mat)



Reflective document mat



Hi-speed USB cable



CD-ROM with EPSON Scan driver, software, and electronic manuals



CD-ROM with Adobe® Photoshop® Elements and Adobe® Photoshop® Album Starter Edition

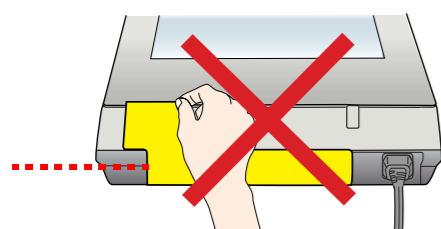


LaserSoft® SilverFast® CD-ROM

Note:
The contents may vary in certain locations.

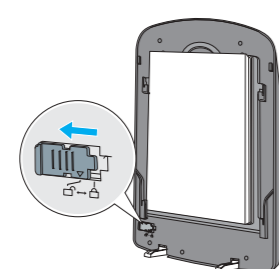
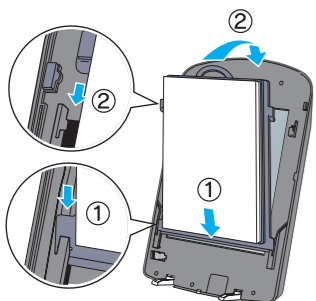
- 2 Remove all the packing tape, but leave the large sticker in place until you are instructed to remove it.

IMPORTANT!
Leave the sticker in place until you are instructed to remove it

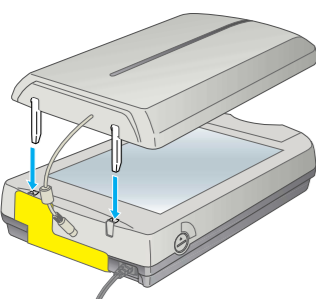


- 3 Set the document cover on the scanner.

1. Attach the document mat to the cover.
2. Slide the transportation lock to the unlocked position.



3. Attach the document cover to the scanner.

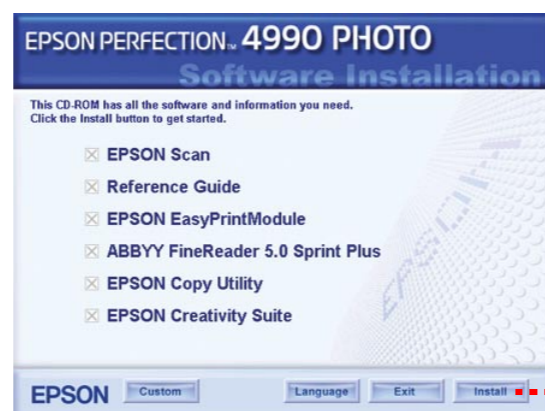


2 Install the Software

Wait! You must install your software before connecting the scanner to your computer. The installation process may take several minutes. Be sure to close all open programs and turn off any virus protection programs.

The software works with Windows® XP, Me, 98 SE, 2000, and Mac OS X 10.2.x or later. Follow the steps below to install the software.

- 1 Insert the scanner software CD-ROM in the CD-ROM or DVD drive. The installer starts automatically.
If it does not start, do the following:
 - Windows XP: Click **Start**, double-click **My Computer**, and then double-click **EPSON**.
 - Windows 98 SE, Me, and 2000: Double-click **My Computer**, and then double-click **EPSON**.
 - Mac OS X: Double-click the **EPSON CD-ROM** icon.
- 2 **For Mac OS X users:** (If you are using Windows, skip this step and go on to the next step.) Select the appropriate OS icon in the **EPSON** folder, and then double-click it.
- 3 If a message appears to prompt you to disable your virus protection program, click **Continue**.
- 4 Read the license agreement, and then click **Agree**.
- 5 If you are prompted to select a language, select your preferred language.
- 6 On the Software Installation screen, click **Install**. Enter your Administrator name and password if necessary.



Click **Install**

- 7 Follow the on-screen instructions to install each program. Note that EPSON Creativity Suite™ installs in several steps.
- 8 At the end of the installation, click **Exit** or **Restart Now**.

Adobe Photoshop Album Starter Edition and Adobe Photoshop Elements

If you have not already installed Adobe Photoshop Elements and Adobe Photoshop Album Starter Edition, install Photoshop Elements and Photoshop Album Starter Edition using the CD-ROM included with your scanner.

Note for Adobe Photoshop Album Starter Edition:

- This software is not available for Windows 98 SE and Mac OS X.
- Adobe Photoshop Album Starter Edition can be used initially a maximum of 25 times due. However, registering the product provides the user with an unlock code which allow unlimited use of this software. After you have installed Adobe Photoshop Album Starter Edition, follow the on-screen instructions to get the unlock code.

1. Start Adobe Photoshop Starter Edition, and click **Registration** under **Help** on the menu bar.

2. Enter the unlock code.

If you can access the Internet:

Enter the required registration information in the Product Registration dialog box to get the unlock code. The unlock code will be sent via confirmation E-mail.

If you cannot access Internet:

Enter psa@epson.co.jp in the E-mail text box, enter other required information, and then click the **I already have an unlock code** button. Enter **b6ece737** as the registration code, and then click the **Unlock Now** button. Please note that Adobe may stop providing the unlock code without any notification.

- For the differences between the starter edition software and Adobe Photoshop Album, refer to the Adobe Web site.

Note for Mac OS X users:
For details on Adobe Photoshop Elements, refer to the Adobe Web site.

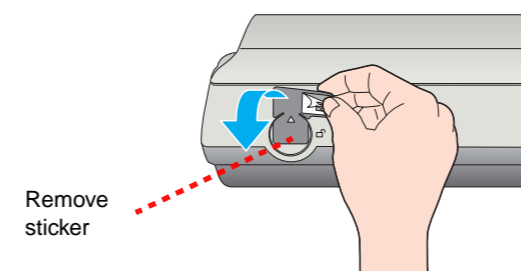
LaserSoft SilverFast

Install LaserSoft SilverFast, following the instructions included with the program. To connect the scanner, follow the instructions in the section "Connect the Scanner". Then restart your system to fully activate the scanner and software.

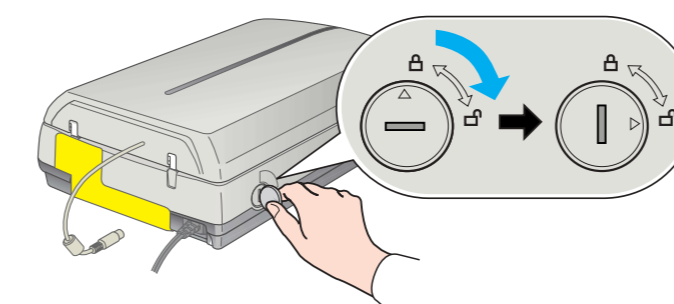
3 Connect the Scanner

After your software is installed, it is time to get connected.

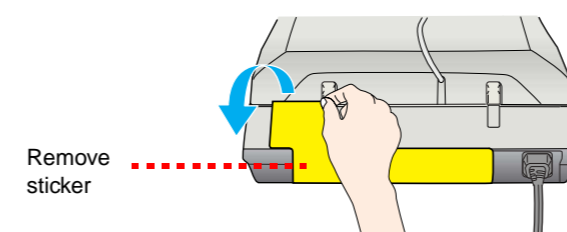
- 1 Remove the sticker from the transportation lock.



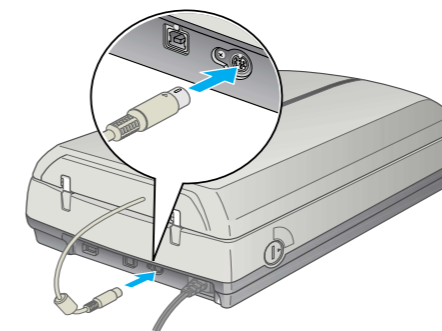
- 2 Use a coin to turn the lock clockwise one-quarter turn to unlock the scanner carriage.



- 3 Remove the sticker from the back of the scanner.



- 4 Connect the document cover cable to the scanner. Make sure the notch and arrow on the connector are facing up.

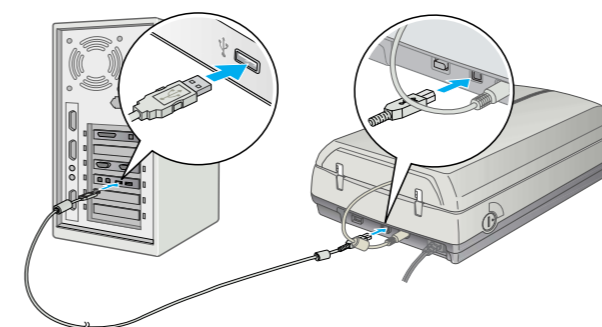


- 5 Connect either the Hi-speed USB cable that came with the scanner or an optional IEEE 1394 (FireWire) with 6 pin-6 pin cable. **Do not connect both cables.**

Note:
The interface cable connectors have only one correct orientation. Ensure the correct orientation of a connector before inserting it into the appropriate port.

If you are using USB

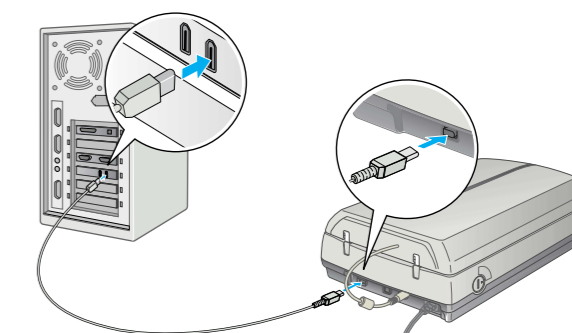
Plug the square end of the Hi-speed USB cable into the scanner's USB 2.0 port. Then plug the flat end into any available USB port on your computer or hub.



Note:
Your scanner may not work correctly if you use a USB cable other than the one supplied by EPSON or if you connect your scanner through more than one hub.

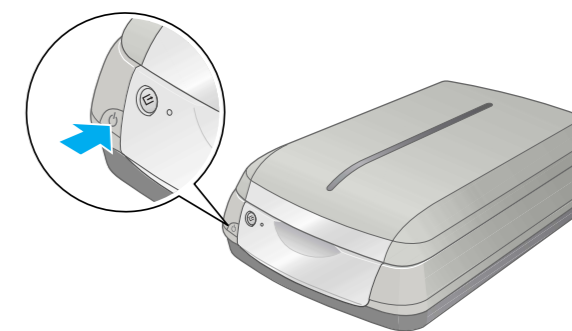
If you are using IEEE 1394 (FireWire) with 6pin-6pin cable

Plug one end of the IEEE 1394 cable (not included) into the scanner's IEEE 1394 port. Then plug the other end into the IEEE 1394 (FireWire, iLink) port on your computer.



- 6 Plug the scanner's power cord into an electrical outlet.

- 7 Make sure the document cover is closed, then press the power button on the front of the scanner to turn it on.

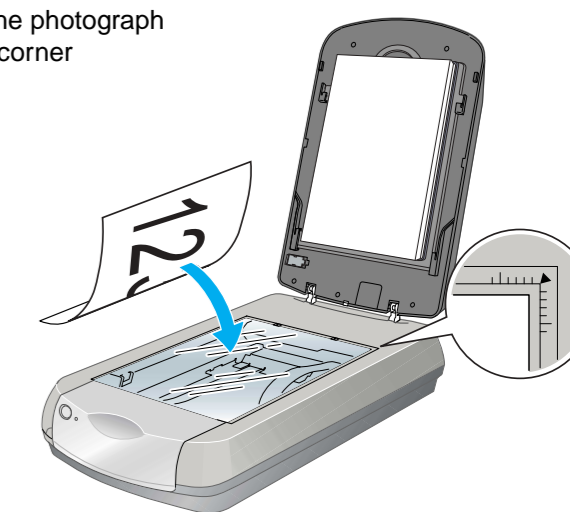


The scanner turns on and the indicator light flashes green. It stops flashing and turns green when the scanner is ready.

Scanner Basics

To scan a photograph, raise the document cover gently and place the photograph face down on the document table. Make sure the top right corner of the photograph is positioned in the top right corner of the scanner.

Then close the cover gently so that your fingers do not get caught under it.



You can scan using EPSON Creativity Suite by pressing the Start button, or you can use EPSON Scan. If you have any problems in scanning, please refer to the Online Reference Guide.



Scanning with EPSON Scan

Follow the steps below to start EPSON Scan.

For Windows users:

- Double-click the **EPSON Scan** icon on your desktop.
- Click **Start**, point to **All Programs** (Windows XP) or **Programs** (Windows Me, 98 SE, or 2000), point to **EPSON Scan**, and then select **EPSON Scan**.

For Mac OS X users:

Click the **EPSON Scan** icon in the **Applications** folder.

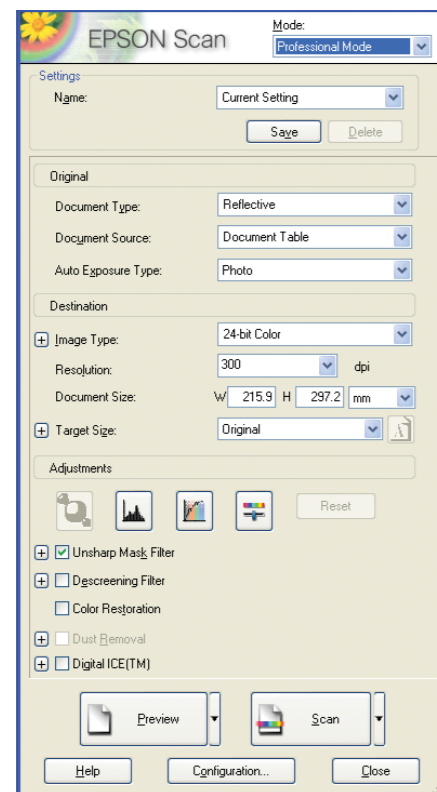
EPSON Scan has three scanning modes:

- **Full Auto Mode** for automatic control of scan settings.
- **Home Mode** for scanning film and more control over scan settings, including Digital ICE™.
- **Professional Mode** for full control over all scan settings.

Fixing and Enhancing Photographs

You can use Digital ICE and Color Restoration to automatically fix photographs that are faded, scratched, dirty, creased, or torn. Digital ICE and Color Restoration work on photographs.

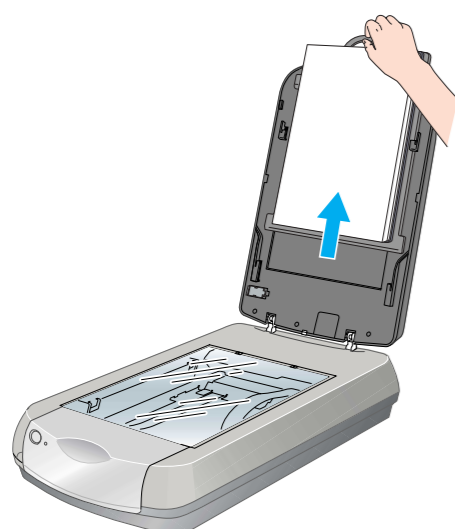
- 1 Start EPSON Scan and choose the Professional mode.
- 2 Click the **Preview** button. Your image appears in the Preview window.
- 3 Select the **Digital ICE™** or **Color Restoration** check box.
 - If your photograph is dirty, scratched, creased, or torn, select **Digital ICE**.
 - If the colors in your photograph are faded, select **Color Restoration**.
- 4 Select the image to be scanned in the Preview window.
- 5 Click the **Scan** button.



Scanning 35 mm Film Strip

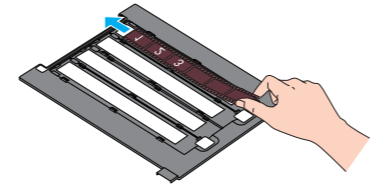
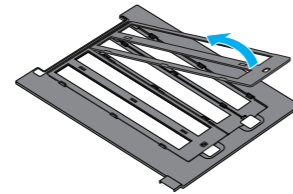
This section provides you how to scan 35 mm film strip. To scan film, you need to remove the reflective document mat from the cover and insert the film in a holder.

- 1 Make sure the transportation lock is released and the document cover cable is connected to the scanner. If you need to connect the cable, first turn the scanner off. Then turn it back on again after you connect the cable.
- 2 Raise the document cover gently. Slide up the reflective document mat, and remove it from the document cover.

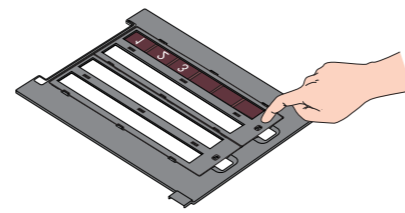


- 3 Open the cover of the 35 mm film holder, slide the film into the holder as shown. Then lower the cover and press down the tabs. Make sure all the tabs are locked in place.

1. Open the cover.
2. Slide the edge of the film in the film holder.

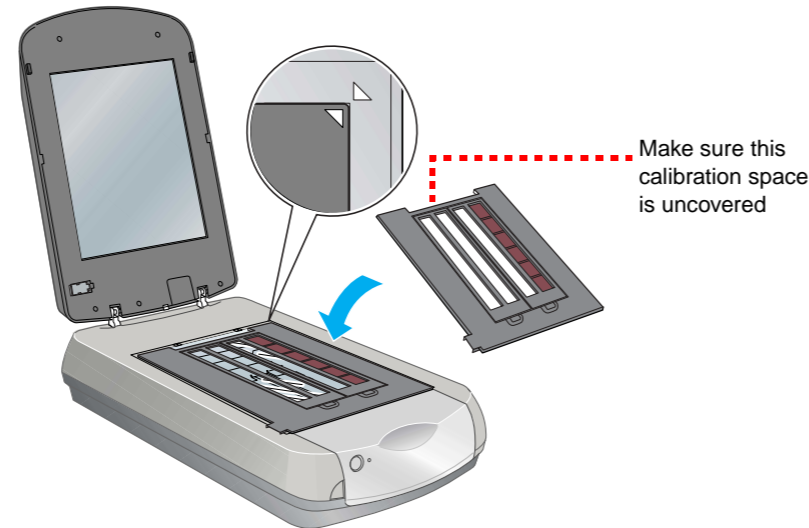


3. Set the cover on the film and press until you hear a click.

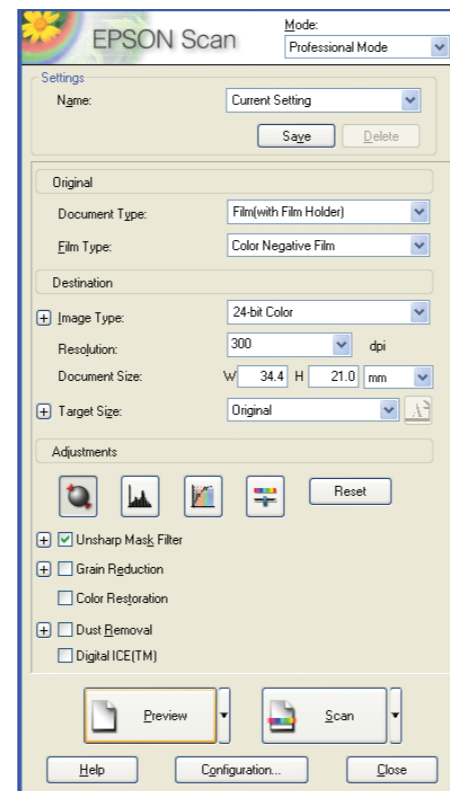


Note:
Press around the entire perimeter of the cover to make sure it is secured.

- 4 Place the film holder on the document table as shown. Make sure the white triangle on the holder points to the upper-right corner of the scanner.




- 5 Close the document cover gently so that your fingers do not get caught between the cover and document table.
- 6 Start EPSON Scan and choose the Professional mode. Select **Film (with Film Holder)** as the Document Type.
- 7 Click the **Preview** button. Your image appears in the Preview window.
- 8 Do one of the following:
 - If your film is dusty or scratched, select **Digital ICE**.
 - If you are scanning black and white negatives or Kodachrome film, select **Dust Removal** instead of **Digital ICE**.
 - If the colors are faded, select **Color Restoration**. This selection is grayed out if the preview window is not shown.
- 9 Select the image to be scanned in the Preview window.
- 10 Click the **Scan** button.




You can also scan 35 mm slides, Medium Format film, 4 x 5 inch film, and other film sizes, using the film holders or film area guide. For details, see the *online Reference Guide*.

Scanning with the Start Button

Press the  Start button on your scanner.



Note for Windows XP users:

You will see a message the first time you press the  Start button. Select **EPSON Creativity Suite**, click **Always use this program for this action**, then click **OK**.

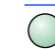



EPSON File Manager opens on your computer.



For details on EPSON File Manager, see the *online Reference Guide*.

Problems?

First, check the indicator light on the scanner.

-  **Flashing green** Warming up or scanning.
-  **Green** Ready to scan.
-  **Flashing red** Make sure both transportation locks are unlocked. Try restarting your computer and turning the scanner off and then on again. If the red light is still flashing, contact your dealer or EPSON.
-  **Off** Make sure the scanner is connected to your computer and turned on.

If your problem is listed here, try these suggestions.

- The New Hardware Wizard appears on your screen.** Click **Cancel** and follow the steps in "Install the Software" on the other side of this sheet. Disconnect the scanner before installing the software.
- The scanner makes a grinding noise when it is turned on.** Make sure both transportation locks are unlocked.
- You see a message about a HI-SPEED USB device in Windows XP.** Click the **x** in the corner of the message to close it. Your scanner will work correctly, although not at maximum speed.
- You see an error message when you try to scan, or the scanner do not scan.** Make sure the scanner is connected to your computer, plugged into a power source, and the power switch is turned on. Make sure both transportation locks are unlocked.

Here's where to look for more answers:

- Double-click the **PERF4990P Reference Guide** icon on your desktop. (If you did not install it, insert the scanner software CD-ROM in the CD-ROM or DVD drive. At the Custom Installation screen, select **Scanner Reference Guide**, then click **Install**. You must have Microsoft® Internet Explorer or Netscape® Navigator (versions 5.0 or later) to read the Reference Guide.
- **On-screen Help for EPSON Scan:** Click the **Help** button or question mark that appears on the screen in these programs.

Safety Instructions

Read all of these instructions and save them for later reference. Follow all warnings and instructions marked on the scanner.

Place the scanner close enough to the computer for the interface cable to reach it easily. Do not place or store the scanner outdoors, near excessive dirt or dust, water, heat sources, or in locations subject to shocks, vibrations, high temperature or humidity, direct sunlight, strong light sources, or rapid changes in temperature or humidity. Do not use with wet hands.

When connecting this product to a computer or other device with a cable, ensure the correct orientation of the connectors. Each connector has only one correct orientation. Inserting a connector in the wrong orientation may damage both devices connected by the cable.

Place the scanner near an electrical outlet where the power cord can be easily unplugged.

Power-supply cords should be placed to avoid abrasions, cuts, fraying, crimping, and kinking. Do not place objects on top of power-supply cords and do not allow power-supply cords to be stepped on or run over. Be particularly careful to keep all power-supply cords straight at the ends and the points where they enter and leave the transformer.

Use only the type of power source indicated on the scanner's label.

Avoid using outlets on the same circuit as photocopiers or air control systems that regularly switch on and off.

If you use an extension cord with the scanner, make sure the total ampere rating of the devices plugged into the extension cord does not exceed the cord's ampere rating. Also, make sure the total ampere rating of all devices plugged into the electrical outlet does not exceed the electrical outlet's ampere rating. Do not place multiple loads on the electrical outlet.

Never disassemble, modify, or attempt to repair the power cord, scanner, or options by yourself, except as specifically explained in the scanner's guides.

Do not insert objects into any openings as they may touch dangerous voltage points or short out parts. Beware of electrical shock hazards.

Allow spaces behind the scanner for the cables, and space above the scanner so that you can fully raise the integrated TPU.

Unplug the scanner and refer servicing to qualified service personnel under the following conditions:

The power cord or plug is damaged; liquid has entered the scanner; the scanner has been dropped or the case damaged; the scanner does not operate normally or exhibits a distinct change in performance. (Do not adjust controls that are not covered by the operating instructions.)

If you are not going to use the scanner for a long period, be sure to unplug the power cord from the electrical outlet.

For Singapore and Hong Kong users: If damage occurs to the plug, replace the cord set or consult a qualified electrician. Replace fuses only with fuses of the correct size and rating.

All rights reserved. No part of this publication may be reproduced, stored in a retrieval system, or transmitted in any form or by any means, electronic, mechanical, photocopying, recording, or otherwise, without the prior written permission of Seiko Epson Corporation. The information contained herein is designed only for use with this Epson scanner. Epson is not responsible for any use of this information as applied to other scanners. Neither Seiko Epson Corporation nor its affiliates shall be liable to the purchaser of this product or third parties for damages, losses, costs, or expenses incurred by the purchaser or third parties as a result of: accident, misuse, or abuse of this product or unauthorized modifications, repairs, or alterations to this product, or (excluding the U.S.) failure to strictly comply with Seiko Epson Corporation's operating and maintenance instructions.

Seiko Epson Corporation shall not be liable for any damages or problems arising from the use of any options or any consumable products other than those designated as Original Epson Products or Epson Approved Products by Seiko Epson Corporation. Seiko Epson Corporation shall not be held liable for any damage resulting from electromagnetic interference that occurs from the use of any interface cables other than those designated as Epson Approved Products by Seiko Epson Corporation. EPSON is a registered trademark of Seiko Epson Corporation. Microsoft and Windows are registered trademarks of Microsoft Corporation. Macintosh is a registered trademark of Apple Computer, Inc. Digital ICE is a trademark of the Eastman Kodak Company.

General Notice: Other product names used herein are for identification purposes only and may be trademarks of their respective owners. Epson disclaims any and all rights in those marks.

Copyright © 2004 by Seiko Epson Corporation

