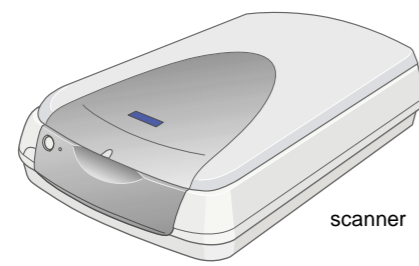


## Unpacking

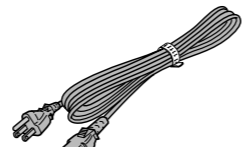
Make sure the following parts are included and not damaged. If you find any missing or damaged items, contact your EPSON dealer immediately.



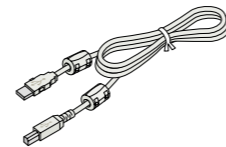
scanner



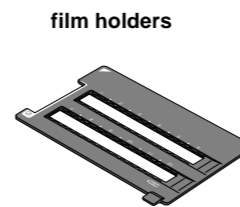
scanner software CD



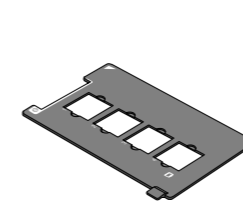
power cord



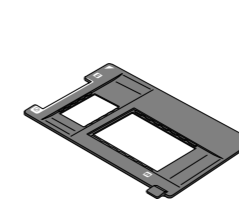
USB cable



35 mm film strip



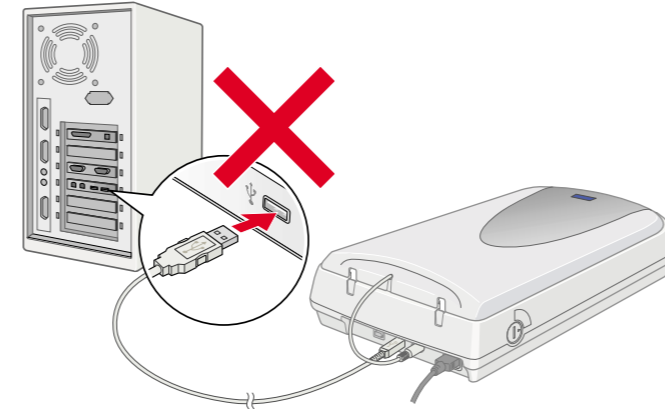
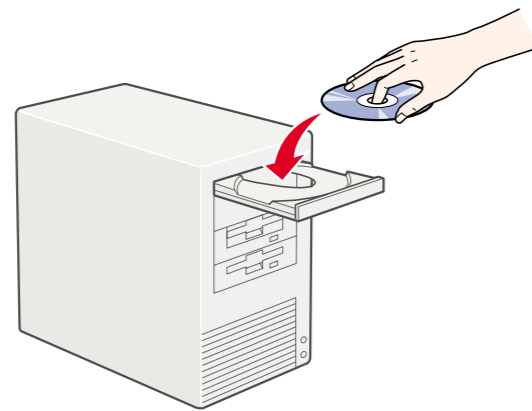
35 mm slide



120/220 (6 x 9 cm) film/  
4 x 5 inches film

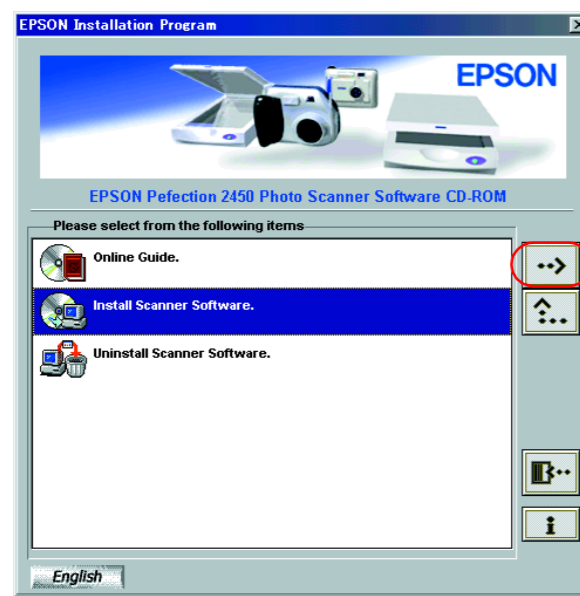
## 1. Installing the Software

Insert the scanner software CD in the CD-ROM drive and install the software BEFORE connecting the scanner to your computer.



### For Windows

1. Insert the scanner software CD in the CD-ROM drive.
2. The EPSON Installation Program dialog box appears. Select your preferred language and click **Next**.
3. Select **Install Scanner Software**, and click **Next**.



**Note:**

If the EPSON Installation Program dialog box does not appear, double-click the **My Computer** icon. Click the CD-ROM icon, then select **Open** from the **File** menu. Then double-click **Setup.exe**.

4. Make sure all the software in the list is selected and click **OK**.
5. Then, follow the on-screen instructions until all the software is installed. When a message appears informing you that installation is complete, click **OK**.

### Installing application software

To install Adobe® Photoshop® Elements, insert the CD in the CD-ROM drive and then follow the on-screen instructions.

**Note:**

If the CD does not launch automatically, double-click the **My Computer** icon. Double-click the CD-ROM icon, and then double-click **Setup.exe** in the Adobe Photoshop Elements folder.

This completes the scanner software installation. Next, set up the scanner as described in "2. Setting up the Scanner."

### For Macintosh

1. Insert the scanner software CD in the CD-ROM drive.
2. Double-click your preferred language icon in the EPSON folder.

**Note:**

If the EPSON folder does not appear on your desktop, double-click the **EPSON** icon on your desktop.

3. Double-click the **Installer** icon.



4. The Installer dialog box appears. Be sure to install all the software in the list.
5. Click **Start** and follow the on-screen instructions. When you are finished with the installer, your computer will restart automatically.
6. After your computer restarts, you must install TextBridge® Pro. Double-click your preferred language icon again.
7. Double-click the **TextBridge Pro Installer** icon, then follow the on-screen instructions.

### Installing application software

Follow the steps below to install Adobe Photoshop Elements.

1. Insert the CD in the CD-ROM drive.
2. Double-click the **Install Photoshop Elements** icon in the Adobe Photoshop Elements folder in the folder of your preferred language.
3. Follow the on-screen instructions.

This completes the scanner software installation. Next, set up the scanner as described in "2. Setting up the Scanner."

## Warnings, Cautions, and Notes

**Warning:** Warnings must be followed carefully to avoid bodily injury.

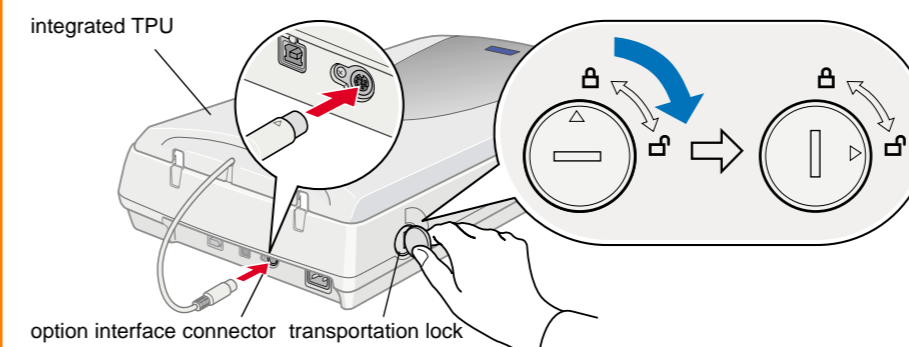
**Caution:** Cautions must be observed to avoid damage to your equipment.

**Notes:** Notes contain important information and useful tips on the operation of your scanner.

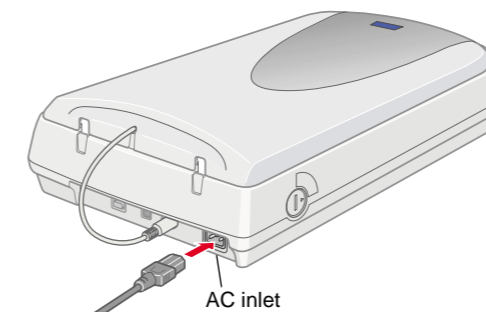
## 2. Setting up the Scanner

### 1. Unlock and plug in the scanner

1. Turn the transportation lock to the unlocked position using a coin or similar disc.
2. Connect the integrated TPU connector to the scanner's option interface connector.

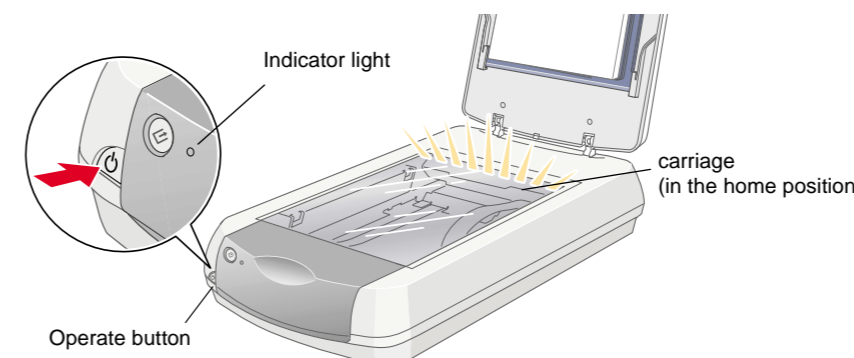


3. Connect the power cord to the AC inlet and plug the other end into an electrical outlet.



**Caution:** It is not possible to change the scanner's voltage. If the label on the back of the scanner does not show the correct voltage for your country, contact your dealer. Do not plug in the power cord.

4. Open the integrated TPU so you can see the startup operation.
5. Turn on the scanner by pressing the **Operate** button. The Indicator light starts flashing.
6. Make sure the carriage moves slightly and the fluorescent lamp on the carriage turns on.



7. The Indicator light stays on in green, meaning the scanner has completed its initialization.

If the scanner does not work as described, see the reverse side.

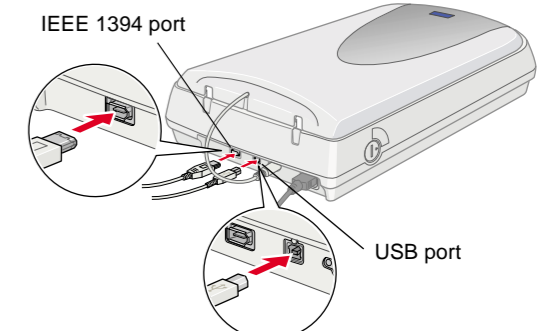
**Caution:** Whenever you turn off the scanner, wait at least 10 seconds before turning it back on. Rapidly turning the scanner on and off can damage it.

**Note:**

The scanner turns off the fluorescent lamp if it does not receive any commands from the computer within 15 minutes.

### 2. Connect the scanner

1. Connect one end of the cable to a suitable port on the back of the scanner, as shown below.



2. Connect the other end of the cable to a suitable port on your computer.
3. The scanner is recognized automatically. For Windows users, the dialog box appears during the recognition in progress.

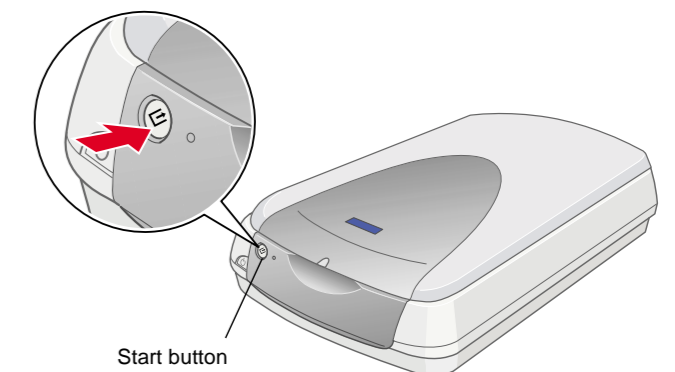
**Note for Windows 2000 users:** When you connect the scanner, the following dialog box appears. Click **Yes**.



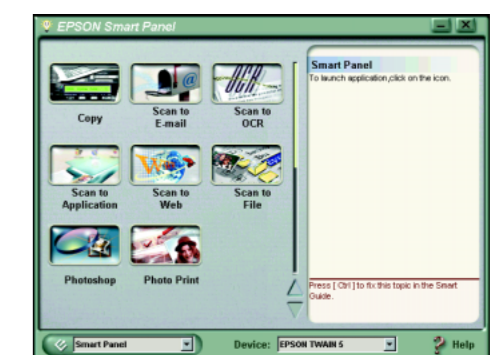
### 3. Check the installation and the setup

Follow these steps to make sure the installation and the setup are completed properly, and the scanner operates correctly.

1. Press the **Start** button on the scanner.



2. If the EPSON Smart Panel window appears, your scanner is now set up and ready to use.



## Safety Instructions

Read all these instructions and save them for later reference. Follow all warnings and instructions marked on the scanner.

### When using the scanner

- Do not place the scanner on an unstable surface, near a radiator or heat source.
- Except as specifically explained in the scanner's guides, do not attempt to service the scanner yourself.
- Unplug the scanner and refer servicing to qualified service personnel under the following conditions:
  - If the power cord or plug is damaged;
  - If liquid has entered the scanner;
  - If the scanner has been dropped or the case damaged;
  - If the scanner does not operate normally or exhibits a distinct change in performance. (Do not adjust controls that are not covered by the operating instructions.)
- Unplug the scanner before cleaning. Clean with a damp cloth only. Do not use liquid or aerosol cleaners.
- Use only the type of power source indicated on the scanner's label.
- Connect all equipment to your grounded electrical outlet. Avoid using outlets on the same circuit as photocopiers or air control systems that regularly switch on and off.
- If you use an extension cord with the scanner, make sure the total ampere rating of the devices plugged into the extension cord does not exceed the cord's ampere rating. Also, make sure the total ampere rating of all devices plugged into the electrical outlet does not exceed the electrical outlet's ampere rating.
- Do not let the power cord become damaged or frayed.
- If you plan to use the scanner in Germany, observe the following:
 

To provide adequate short-circuit protection and over-current protection for this scanner, the building installation must be protected by a 10 or 16 amp circuit breaker.

#### Note for German-speaking users:

Bei Anschluss des Scanner an die Stromversorgung muss sichergestellt werden, dass die Gebäudeinstallation mit einer 10 A- oder 16 A-Sicherung abgesichert ist.

### When choosing a place for the scanner

- Place the scanner close enough to the computer for the interface cable to reach it easily.
- Place the scanner near an electrical outlet where the power cord can be easily unplugged.
 

**Note for French-speaking users:**  
Placez le scanner près d'une prise de courant où la fiche peut-être débranchée facilement.
- Allow space behind the scanner for the cables, and space above the scanner so that you can raise the integrated TPU fully.
- Keep the scanner away from high temperatures, humidity and excessive dirt or dust. Also avoid using or storing the scanner in places subject to rapid changes of temperature and humidity.
- Keep the scanner away from direct sunlight and strong light sources.
- Avoid places subject to shocks and vibrations.

### ENERGY STAR® Compliance



As an ENERGY STAR® Partner, EPSON has determined that this product meets the ENERGY STAR® guidelines for energy efficiency.

The International ENERGY STAR® Office Equipment Program is a voluntary partnership with the computer and office equipment industry to promote the introduction of energy-efficient personal computers, monitors, printers, fax machines, copiers, and scanners, in an effort to reduce air pollution caused by power generation.

### For users in the United Kingdom



#### Warning:

*This appliance must be earthed. Refer to the rating plate for the voltage and check that the appliance voltage corresponds to the supply voltage.*

**Important:** The wires in the mains lead fitted to this appliance are coloured in accordance with the following code:

Green and yellow — Earth  
Blue — Neutral  
Brown — Live

As the colours of the wires in the mains lead of this appliance may not correspond with the coloured markings identifying the terminals in your plug, proceed as follows:

- The green and yellow wire must be connected to the terminal in the plug which is marked with the letter E or with the earth symbol (⏏).
- The blue wire must be connected to the terminal in the plug marked with the letter N.
- The brown wire must be connected to the terminal in the plug marked with the letter L.

### For users in the United Kingdom, Singapore, and Hong Kong

If damage occurs to the plug, replace the cord set or consult a qualified electrician.

Replace fuses only with fuses of the correct size and rating.

All rights reserved. No part of this publication may be reproduced, stored in a retrieval system, or transmitted in any form or by any means, electronic, mechanical, photocopying, recording, or otherwise, without the prior written permission of SEIKO EPSON CORPORATION. No patent liability is assumed with respect to the use of the information contained herein. Neither is any liability assumed for damages resulting from the use of the information contained herein.

Neither SEIKO EPSON CORPORATION nor its affiliates shall be liable to the purchaser of this product or third parties for damages, losses, costs, or expenses incurred by purchaser or third parties as a result of: accident, misuse, or abuse of this product or unauthorized modifications, repairs, or alterations to this product.

SEIKO EPSON CORPORATION and its affiliates shall not be liable against any damages or problems arising from the use of any options or any consumable products other than those designated as Original EPSON Products or EPSON Approved Products by SEIKO EPSON CORPORATION.

EPSON is a registered trademark of SEIKO EPSON CORPORATION. Macintosh is a registered trademark of Apple Computer, Inc. Microsoft and Windows are registered trademarks of Microsoft Corporation in the United States of America and other countries. Adobe and Photoshop are registered trademarks of Adobe Systems Incorporated.

*General Notice: Other product names used herein are for identification purposes only and may be trademarks of their respective owners. EPSON disclaims any and all rights in those marks.*

## Troubleshooting

### For Windows

If the Add New Hardware Wizard or the Found New Hardware Wizard dialog box appears, click **Cancel** and follow the steps described on the reverse side. Do not click **Next**.



### Recovering from Scanner Software Installation Problems

If you canceled the scanner software installation before the procedure was completed, or you connected the scanner before installing the software, EPSON TWAIN may be incorrectly installed.

Follow these steps to install the software correctly.

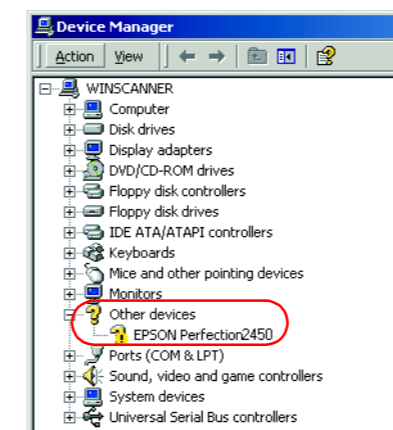
#### For Windows Me and 98 users

1. Disconnect the power cord and the interface cable from the scanner.
2. Follow the steps described on the reverse side.

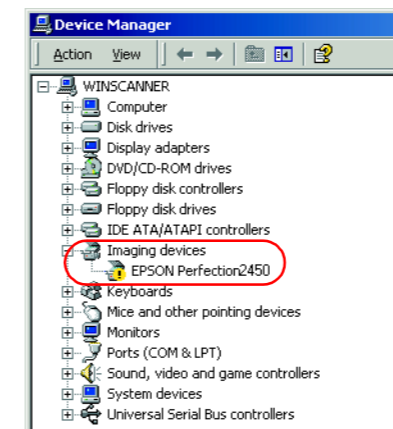
#### For Windows 2000 users

1. Make sure your scanner is turned on and connected to your PC.
2. Right-click the **My Computer** icon, and then click **Properties**.
3. In the System Properties dialog box, select the **Hardware** tab and then click **Device Manager**.
4. Click the plus (+) sign next to Other devices or Imaging devices. If your scanner appears under Other devices with a question (?) mark or under Imaging devices with an exclamation (!) mark, right-click your scanner name, and then select **Uninstall...**

Your scanner appearing under Other devices with a question (?) mark:



Your scanner appearing under Imaging devices with an exclamation (!) mark:



5. The Confirm Device Removal dialog box appears. Click **OK**.
6. Shut down your PC and turn off your scanner. Then disconnect your scanner from your PC.
7. Follow the steps described on the reverse side.

## Recovering from Scanner Setup Problems

If the scanner does not work as described on the reverse side, the problem usually occurs because of:

- The transportation lock lever is not released.
- The power cord is not firmly plugged.

Check the above items, and then try again.

## Getting Information from the Online Reference Guide

To learn more about your scanner, see the *Online Reference Guide* which includes detailed information on scanning and troubleshooting.

#### Note:

A Web browser must be installed on your computer to view the *Online Reference Guide*.

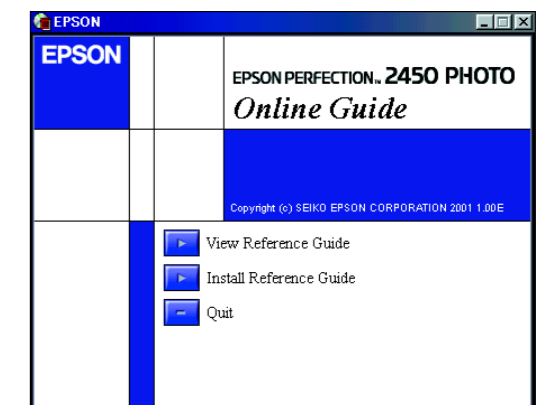
1. Insert the scanner software CD in your CD-ROM drive.
2. **For Windows users:**

Select your preferred language in the EPSON Installation Program dialog box and click **...**. Select **Online Guide** and click **-->**.

#### For Macintosh users:

Double-click your preferred language icon, and then double-click the **Manual** icon. Finally, double-click the **Online Guide** icon.

3. The online guide menu appears.



4. For viewing the *Online Reference Guide*, click **View Reference Guide**. For installing the guide, click **Install Reference Guide** and follow the on-screen instructions.

#### Note:

If your hard disk does not have enough space for installing the *Online Reference Guide*, view it directly from the CD.

5. When the *Online Reference Guide* opens, use the table of contents in the guide to access all topics in the guide. Click a main entry (and a sub entry) to view topics under the entry, and click a topic to go to that page. Click **Help** to get information how to use the guide.

