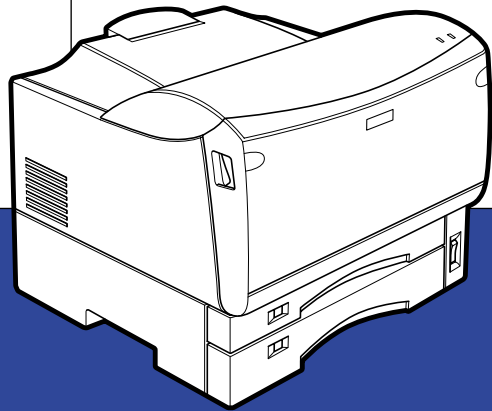


# EPSON

Laser Printer



**EPSON EPL-1220**

*Reference Guide*

# EPSON®

Laser Printer

# EPL-1220

All rights reserved. No part of this publication may be reproduced, stored in a retrieval system, or transmitted in any form or by any means, mechanical, photocopying, recording, or otherwise, without the prior written permission of SEIKO EPSON CORPORATION. No patent liability is assumed with respect to the use of the information contained herein. Neither is any liability assumed for damages resulting from the use of the information contained herein.

Neither SEIKO EPSON CORPORATION nor its affiliates shall be liable to the purchaser of this product or third parties for damages, losses, costs, or expenses incurred by purchaser or third parties as a result of: accident, misuse, or abuse of this product or unauthorized modifications, repairs, or alterations to this product, or (excluding the U.S.) failure to strictly comply with SEIKO EPSON CORPORATION's operating and maintenance instructions.

SEIKO EPSON CORPORATION shall not be liable against any damages or problems arising from the use of any options or any consumable products other than those designated as Original EPSON Products or EPSON Approved Products by SEIKO EPSON CORPORATION.

*General Notice: Other product names used herein are for identification purposes only and may be trademarks of their respective owners. EPSON disclaims any and all rights in those marks.*

Copyright © 2001 by SEIKO EPSON CORPORATION, Nagano, Japan

---

## Reference Guide

---

# Contents

Warnings, Cautions, and Notes . . . . .	7
Safety Precautions . . . . .	7
Important Safety Instructions . . . . .	9
Power On/Off Cautions . . . . .	10

---

## Chapter 1 Product Information

---

Printer Parts . . . . .	12
Panel Lights . . . . .	14
About Your Printer . . . . .	15
Features . . . . .	15
Options and Consumable Products . . . . .	16

---

## Chapter 2 Paper Handling

---

Preventing the paper-feed and paper-jam problems . . . . .	18
Available Paper . . . . .	20
Paper that should not be used. . . . .	22
Paper Sources . . . . .	23
MP Tray . . . . .	23
Standard Lower Paper Cassette . . . . .	23
250-Sheet Lower Paper Cassette Unit A3 Universal . . . . .	23
Loading Paper . . . . .	24
MP Tray (Paper Cassettes). . . . .	24
Loading an uncommon paper size. . . . .	31
Printing on Special Media. . . . .	35
Envelopes . . . . .	35
Labels . . . . .	36
Transparencies. . . . .	37
Thick paper . . . . .	38

### ***Chapter 3 Using the Printer Driver***

---

For Windows Users . . . . .	40
About the Printer Driver . . . . .	40
Accessing the Printer Driver . . . . .	40
Making Changes to Printer Settings. . . . .	41
Monitoring Your Printer (EPSON Status Monitor 3). . . . .	50
Setting for the USB connection . . . . .	57
Increasing the Printing Speed . . . . .	59
Canceling Printing . . . . .	62
Uninstalling the Printer Software. . . . .	62
For Macintosh Users . . . . .	67
About the Printer Driver . . . . .	67
Accessing the Printer Driver . . . . .	67
Making Changes to Printer Settings. . . . .	68
Monitoring Your Printer (EPSON Status Monitor 3). . . . .	75
Setting for the USB connection . . . . .	78
Canceling Printing . . . . .	80
Uninstalling the Printer Software. . . . .	80

### ***Chapter 4 Setting Up Your Printer as a Shared Printer for Windows***

---

Setting up your printer as a shared printer . . . . .	84
Using an Additional Driver . . . . .	86
Setting for the clients . . . . .	92
With Windows Me/98/95. . . . .	93
With Windows 2000 . . . . .	95
With Windows NT 4.0 . . . . .	98
Installing the Printer Driver from the CD-ROM . . . . .	100

### ***Chapter 5 Installing and Removing Options***

---

250-Sheet Lower Paper Cassette Unit A3 Universal. . . . .	103
Installing. . . . .	103
Removing. . . . .	105
Memory Module . . . . .	106
Installing. . . . .	106

Removing.....	110
---------------	-----

## ***Chapter 6 Replacing the Imaging Cartridge***

---

Replacing.....	113
----------------	-----

## ***Chapter 7 Troubleshooting***

---

Ready and Error Lights.....	119
Printing a Status Sheet.....	120
Clearing paper jams.....	122
Operational problems.....	126
Printout problems.....	128
Print quality problems.....	130
Memory problems.....	138
Problems using options.....	139
Printer driver and utility problems.....	140
Communication errors.....	142

## ***Chapter 8 Cleaning and Transporting the Printer***

---

Cleaning the Printer.....	146
Cleaning the inside of the printer.....	146
Removing spilled toner.....	148
Cleaning the printer case.....	149
Cleaning the paper roller.....	150
Transporting the Printer.....	151

## ***Appendix A Technical Specifications***

---

Paper.....	153
Specifications.....	153
Printable area.....	154
Printer.....	155
General.....	155

Environmental	156
Mechanical	157
Electrical	157
Interface	158
Parallel interface	158
USB interface	158
Options and Consumables	159
250-Sheet Lower Paper Cassette Unit A3 Universal	159
Memory Module	160
Imaging Cartridge (S051079)	160

## ***Appendix B Work with Fonts***

---

EPSON BarCode Fonts	162
System requirements	164
Installing EPSON BarCode Fonts	164
Printing with EPSON BarCode Fonts	166
EPSON BarCode Font specifications	169

## ***Appendix C Contacting Customer Support***

---

For users in Hong Kong	182
------------------------	-----

## ***Glossary***

---

## ***Index***

---

---

## Warnings, Cautions, and Notes



### Warnings

*must be followed carefully to avoid bodily injury.*



### Cautions

*must be observed to avoid damage to your equipment.*

### Notes

*contain important information and useful tips on the operation of your printer.*

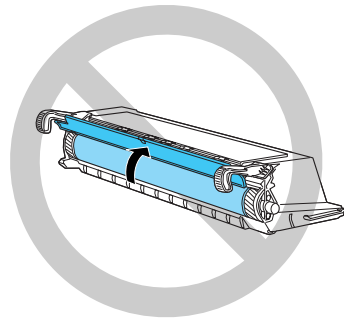
---

## Safety Precautions

This printer uses laser technology. The following precautions apply whenever you use the printer. Even if you are familiar with other types of printers, be sure to follow these precautions carefully to ensure safe, efficient operation.

- ❑ Because the printer weighs approximately 17 kg (37.5 lb) without the consumables installed, you should not lift or carry it by yourself. Two people should carry it, lifting it at the correct positions.
- ❑ Be careful not to touch the fuser, which is marked CAUTION Hot Surface Avoid Contact, or the surrounding areas. If the printer has been in use, the fuser and the surrounding areas may be very hot.
- ❑ Avoid touching the components inside the printer unless instructed to do so in this guide.
- ❑ Never force the printer's components into place. Although the printer is designed to be sturdy, rough handling can damage it.

- ❑ When handling the imaging cartridge, always place it on a clean, smooth surface.
- ❑ Do not turn the imaging cartridge upside down or stand it on its ends.
- ❑ Do not attempt to modify or take the imaging cartridge apart. It cannot be refilled.
- ❑ Do not touch the toner and avoid all contact with your eyes.
- ❑ Do not dispose of used imaging cartridges in fire, as they can explode and cause injury. Dispose of them according to local regulations.
- ❑ Do not use an imaging cartridge for at least one hour after moving it from a cool to a warm environment to prevent damage from condensation.
- ❑ Do not open the drum's protective cover and avoid exposing the imaging cartridge to room light any longer than necessary. Overexposing the cartridge may cause abnormally dark or light areas to appear on the printed page and reduce the life of the cartridge.
- ❑ Be sure to keep consumable components out of the reach of children.
- ❑ Do not leave jammed paper inside the printer. This can cause the printer to overheat.





---

## ***Important Safety Instructions***

- ❑ Connect your printer to an electrical outlet that meets the power requirements of this printer. Your printer's power requirements are indicated on a label attached to the printer. If you are not sure of the power supply specifications in your area, contact your local power company or consult your dealer.
- ❑ If you are unable to insert the AC plug into the electrical outlet, contact an electrician.
- ❑ Adjust only those controls that are covered by the operating instructions, as improper adjustment of other controls may result in damage and may require repairs by a qualified service representative.

### ***ENERGY STAR® Compliance***



As an International ENERGY STAR® Partner, EPSON has determined that this product meets the International ENERGY STAR® Program guidelines for energy efficiency. The International ENERGY STAR® Office Equipment Program is a voluntary partnership with the computer and office equipment industry to promote the introduction of energy-efficient personal computers, monitors, printers, fax machines, copiers, and scanners, in an effort to reduce air pollution caused by power generation.

---

## Power On/Off Cautions



**Caution:**

*Do not turn off the printer:*

- For at least 15 seconds after turning on the printer.*
- While the Ready light is flashing.*
- While printing.*

# Chapter 1

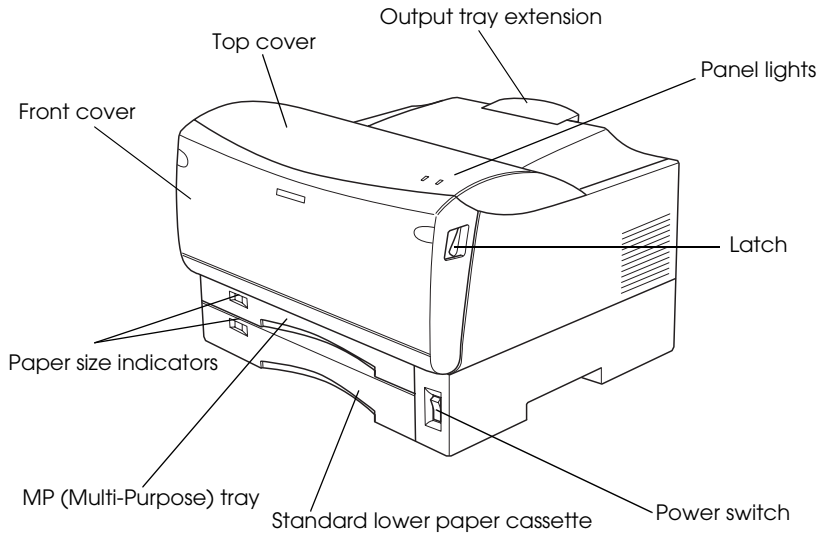
---

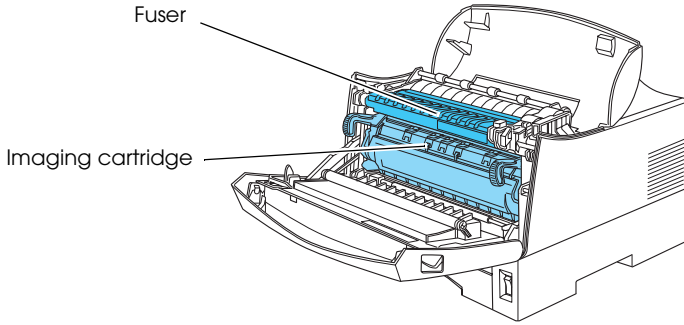
## **Product Information**

Printer Parts .....	12
Panel Lights .....	14
About Your Printer .....	15
Features .....	15
Options and Consumable Products .....	16

---

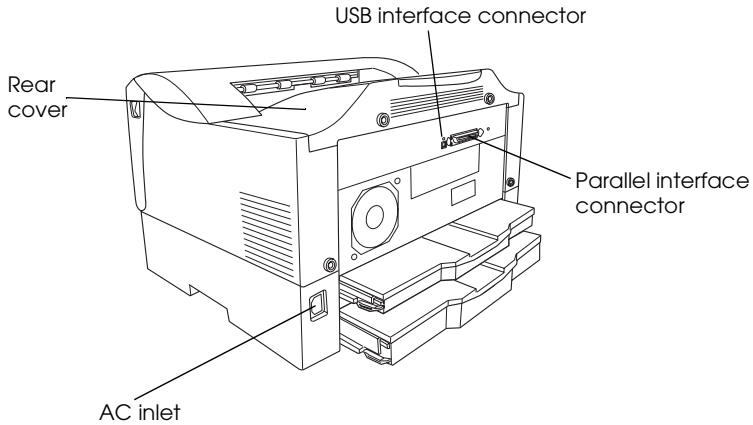
## Printer Parts



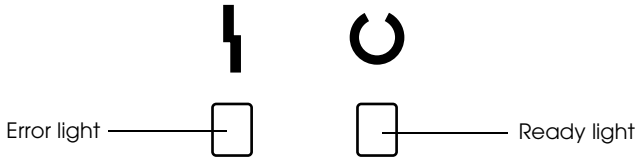


**Warning:**

*Be careful not to touch the fuser, which is marked CAUTION Hot Surface Avoid Contact, or the surrounding areas. If the printer has been in use, the fuser and the surrounding areas may be very hot.*



# Panel Lights



Error Light (red)	Ready Light (green)	Printer Status
Off	Off	Off
Off	On	Ready for printing
Off	Flashing	Warming up or receiving data
Flashing	Off	Out of paper or easily cleared error
On	Flashing	
On	Off	Service required error Turn off the printer, wait for few minutes and then turn it back on. If this does not clear the error, contact your dealer or a qualified service person.
Flashing alternatively		

---

## **About Your Printer**

Your printer is the latest in EPSON's advanced line of laser printers.

The printer's 600/300-dpi (dots per inch) resolution is enhanced by EPSON's Resolution Improvement Technology (RITech), which smooths the jagged edges of diagonal lines in both text and graphics. This gives your documents a clean, crisp look that contributes to a professional appearance.

Also, EPSON's Enhanced MicroGray technology provides you with better halftoning when printing graphics.

The printer is easy to install and use. Simply set up the printer, connect it to your computer, and install the printer driver by following the on-screen instructions.

The printer supports ECP mode in Microsoft® Windows® Me, 98, 95, 2000 and NT® 4.0. ECP mode is useful for high-speed data transfer and bidirectional communication with your computer.

## **Features**

The printer comes with a full set of features that contributes to ease of use and consistent, high-quality output. The main features are described below.

### **High-quality printing**

Your printer provides 600-dpi printing at a speed of up to 12 pages per minute when printing on A4 paper. You'll appreciate the professional print quality produced by your printer and its quick processing speed.

## ***Toner Save Mode***

To reduce the amount of toner used in printing documents, you can print rough drafts using the Toner Save mode.

## ***Resolution Improvement Technology (RITech)***

Resolution Improvement Technology (RITech) is an original EPSON printer technology that improves the appearance of printed lines, text, and graphics.

## ***Options and Consumable Products***

To purchase options or consumable products, contact your dealer or the customer support representative in your area.

### ***Options***

#### *250-Sheet Lower Paper Cassette Unit A3 Universal (C813741)*

This unit increases paper feeding capacity (up to 250 sheets of A3 or other paper sizes).

#### *Memory Module*

The printer comes with 2 MB of memory, which can be expanded up to a total of 13 MB.

### ***Consumable products***

#### *Imaging Cartridge (S051079)*

This imaging cartridge is specially designed for your printer.



## Chapter 2

---

# **Paper Handling**

Preventing the paper-feed and paper-jam problems . . . . .	18
Available Paper . . . . .	20
Paper that should not be used. . . . .	22
Paper Sources . . . . .	23
MP Tray . . . . .	23
Standard Lower Paper Cassette . . . . .	23
250-Sheet Lower Paper Cassette Unit A3 Universal . . . . .	23
Loading Paper . . . . .	24
MP Tray (Paper Cassettes). . . . .	24
Loading an uncommon paper size. . . . .	31
Printing on Special Media. . . . .	35
Envelopes . . . . .	35
Labels . . . . .	36
Transparencies. . . . .	37
Thick paper . . . . .	38

---

## ***Preventing the paper-feed and paper-jam problems***

If you have frequent paper feed or paper jam problems, use this checklist of corrective measures:

- Use a higher-quality paper that is not too thin or rough.
- Do not place the printer on a surface that is smaller than the printer's bottom panel.
- Be sure to place the printer on a horizontal surface.
- Use an appropriate paper that is listed in "Available Paper" on page 20.
- Fan the stack of paper and then tap its edges to align it before you load it.
- Be sure to set the paper size switch according to the size of the paper you loaded.
- Make sure that the MP tray, the standard lower cassette, and the optional lower paper cassette are set properly.
- Make sure that the printer driver settings match the loaded paper.
- Make sure that the appropriate paper source is selected in the printer driver.
- Select the paper source on the application according to the paper cassette that you loaded paper into.
- Clean the paper rollers inside the feeding area.
- Be sure to remove all of the jammed paper.
- Make sure that sheets of paper do not stick to each other.

- ❑ When loading envelopes, curl the edges of the envelopes, which are nearest the front side of the MP tray, upward.
- ❑ Never print on the back of paper that is already printed on.
- ❑ Print on the appropriate surface of paper.
- ❑ Be sure that you do not load too much paper into the cassette.
- ❑ Be sure to adjust the paper guides so that paper feeds freely.
- ❑ Never let more than 250 sheets accumulate on the output tray.
- ❑ Try turning over the stack of paper in the paper cassette. Most paper packages indicate the top side of the paper with an arrow at the side of the package.

For information on how to clear paper jams, see “Clearing paper jams” on page 122.

---

## **Available Paper**

This section explains what kinds of paper and media you can use with your printer. Do not use paper or media not mentioned in this section.

**Note:**

*The printer is extremely sensitive to moisture. Be sure to store your paper in a dry environment.*

Paper Type	Description
Plain paper	Recycled paper is acceptable* Weight: 64 to 81.4 g/m <sup>2</sup> (17 to 21.7 lb <sup>***</sup> )
Colored paper	Non-coated
Letterhead	Paper with preprinted letterhead, provided that the paper and ink are both compatible with laser printers. Paper which is printed with laser printer, ink Jet printer, or other printers cannot be used.
Envelopes	No paste and no tape No plastic windows (unless specifically designed for laser printers) Weight: 70 to 80 g/m <sup>2</sup> (18.7 to 21.3 lb <sup>***</sup> )
Labels	Labels should be designed for monochrome laser printers or copiers and the backing sheet is covered completely, with no gaps between labels**
Transparencies	The sheets should be designed for monochrome laser printers or copiers.
Custom-size paper	Paper that ranges from 100 x 148 mm to 297 x 420 mm and weighs from 64 to 128 g/m <sup>2</sup> (17 to 34.1 lb <sup>***</sup> ).
Thick paper	Weight: 81.4 to 128 g/m <sup>2</sup> (21.7 to 34.1 lb <sup>***</sup> )

\* Use recycled paper only under normal temperature and humidity conditions. Poor quality paper may reduce print quality, cause paper jams and other problems.

\*\* Gaps between labels may cause the labels to peel off inside the printer and damage the printer.

\*\*\* lb: Ream Weight (lb/500 sheets/17 in. x 22 in.)

**Note:**

*Since the quality of any particular brand or type of media may be changed by the manufacturer at any time, EPSON cannot guarantee the quality of any type of media. Always test samples of media stock before purchasing large quantities or printing large jobs.*

## ***Paper that should not be used***

You cannot use the following paper in this printer. They may cause printer damage, paper jams, and poor print quality.

- Media meant for other color laser printers, black-and-white laser printers, color copiers, black-and-white copiers, or ink jet printers
- Previously printed paper from any other color laser printer, black-and-white laser printer, color copier, black-and-white copier, ink jet printer, or thermal transfer printer
- Carbon paper, no-carbon paper, thermal-sensitive paper, pressure-sensitive paper, acid paper, or paper that uses high-temperature-sensitive ink (around 180° C)
- Labels that peel easily or labels that do not cover the backing sheet completely
- Coated paper or special surface-colored paper
- Paper that has binder holes or is perforated
- Paper that has glue, staples, paper clips, or tape on it
- Paper that attracts static electricity
- Moist or damp paper
- Paper of uneven thickness
- Overly thick or thin paper
- Paper that is too smooth or too rough
- Paper that is different on the front and back
- Paper that is folded, curled, wavy, or torn
- Paper of irregular shape, or paper that does not have right angle corners
- Paper that has been already printed on its back

---

## **Paper Sources**

This section describes the combinations of paper sources and paper types that you can use.

### **MP Tray**

<b>Paper Type</b>	<b>Capacity</b>	<b>Paper Size</b>
Plain paper	Up to 100 sheets of 64 g/m <sup>2</sup> paper (Weight: 64 to 81.4 g/m <sup>2</sup> )	A3, A4, A5, B4, B5, Letter (LT), Legal (LGL), F4, Half-Letter (HLT), Executive (EXE), Government Letter (GLT), Government Legal (GLG), Custom-size paper: 100 × 148 mm minimum 297 × 420 mm maximum
Letterhead		
Thick paper	Up to 50 sheets (Weight: 81.4 to 128 g/m <sup>2</sup> )	
Labels	Up to 30 sheets (Weight: 81.4 to 128 g/m <sup>2</sup> )	
Transparencies		
Envelopes	Up to 10 sheets (Weight: 70 to 80 g/m <sup>2</sup> )	

### **Standard Lower Paper Cassette**

<b>Paper Type</b>	<b>Capacity</b>	<b>Paper Size</b>
Plain paper	Up to 250 sheets	A3, A4, A5, B4, B5, Letter (LT)
Letterhead		

### **250-Sheet Lower Paper Cassette Unit A3 Universal**

<b>Paper Type</b>	<b>Capacity</b>	<b>Paper Size</b>
Plain paper	Up to 250 sheets	A3, A4, A5, B4, B5, Letter (LT)
Letterhead		

---

## ***Loading Paper***

The printer can feed paper from the MP tray, the standard lower cassette and the optional lower paper cassette unit.

Please note the following points when choosing paper:

- ❑ Paper should be of high quality and be relatively smooth, with a weight between 64 and 81.4 g/m<sup>2</sup> (17 to 21.7 lb) in the case of plain paper, and 81.4 and 128 g/m<sup>2</sup> (21.7 to 34.1 lb) for card stock.
- ❑ The printer is extremely sensitive to moisture. Be sure to store your paper in a dry environment.
- ❑ The use of colored paper is acceptable, but coated paper should be avoided.
- ❑ You may use paper with preprinted letterheads, provided that the paper and ink are both laser-printer type.

### ***MP Tray (Paper Cassettes)***

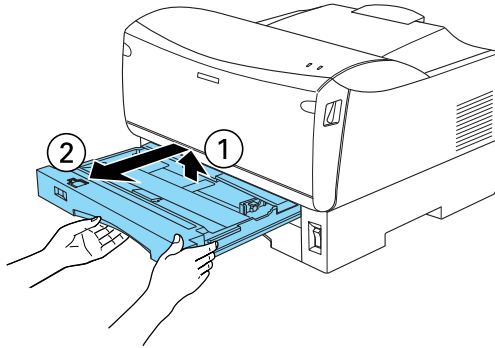
This section describes how to load paper into the MP tray. As the paper-loading procedures of MP tray, standard lower paper cassette, and 250-sheet lower paper cassette are almost the same, also refer to this section when loading paper into these paper cassettes.

For information on the paper sizes and types available for each paper cassette, see “Paper Sources” on page 23.

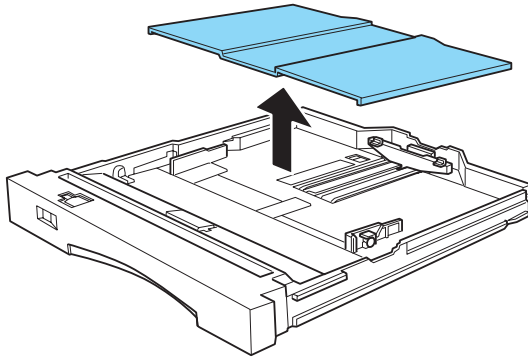
Follow these steps to load paper into the MP tray:



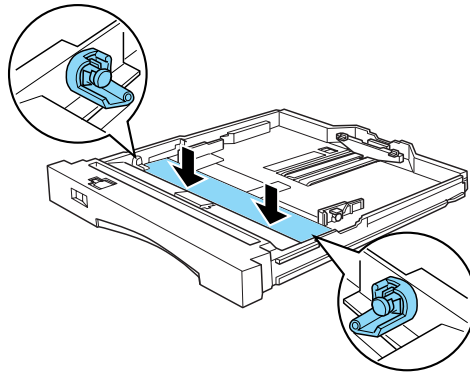
1. Remove the MP tray from the printer while lifting up the MP tray slightly so that the tray is unlocked.



2. Remove the MP tray cover.



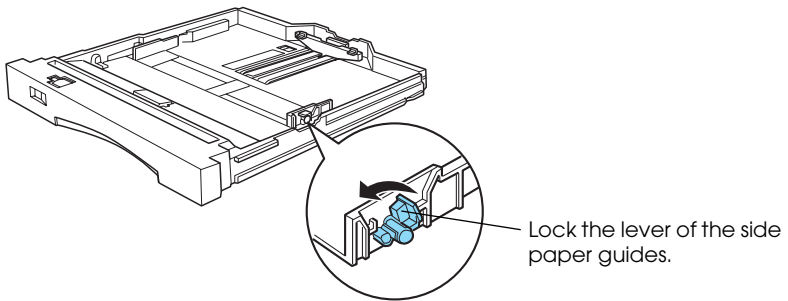
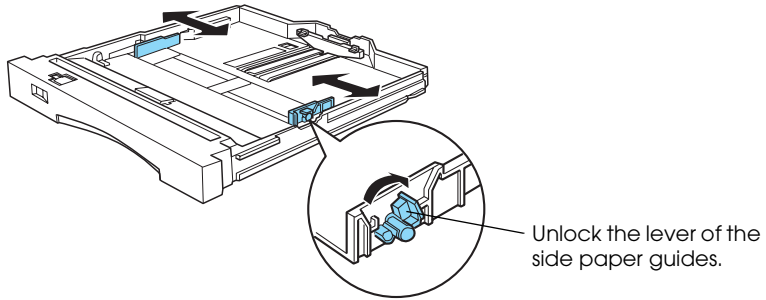
3. Press down on the metal plate in the MP tray until it locks into position, or the MP tray may not be reinserted in the printer.



**Note:**

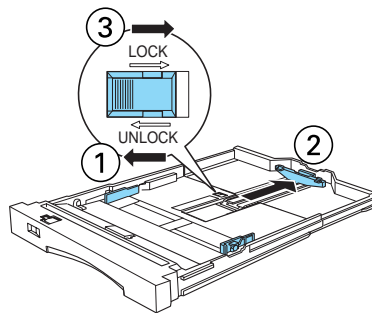
*Make sure that both sides of the metal plate are completely locked in position. Then follow the next steps.*

- Slide the side paper guides outward to accommodate the paper you are loading.

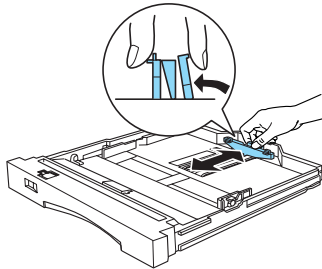


**Note:**

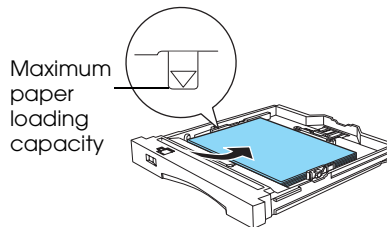
*To load A3, B4, LGL, or F4-size paper, unlock the cassette lock and expand the MP tray to the end, then lock the tray lock again.*



5. Slide the end paper guide while pinching the knob, to accommodate the paper you are loading.



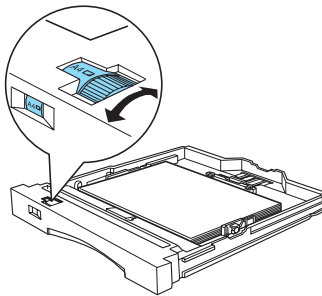
6. Load paper into the MP tray with the printable side up. Make sure that the paper loaded is under the triangle marks on the inside of the MP tray.



**Note:**

- ❑ Load A4, A5, B5, LT, EXE, or GLT paper long edge first.
- ❑ Load A3, B4, HLT, LGL, GLG, or F4 paper with the short edge first.
- ❑ Load Com-10, I-B5, or DL envelopes with the flap edge to the right side, and C5 or C6 envelopes with the flap edge to the front of the MP tray.
- ❑ If your printouts are curled or do not stack properly when using plain paper, try turning the stack over and reloading it.

- ❑ *You can load up to 100 sheets of plain paper in the MP tray, 250 sheets of plain paper in the standard lower paper cassette and the 250-sheet lower paper cassette.*
  - ❑ *When you fill the paper over the triangle marks on the inside of the tray or paper cassettes, you may have paper-feed problems.*
7. Adjust the paper guides to the size of the paper, and set the paper size switch according to the size of the paper you loaded.



If you cannot find appropriate setting on the paper size switch, set the switch to **Others** and use the printer driver to set the paper size. See “Loading an uncommon paper size” on page 31 for more information.

**Note:**

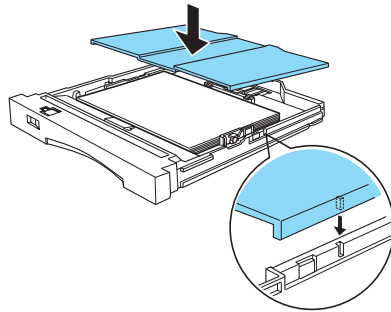
*You can set the paper size switch to **Others** only on the MP tray.*



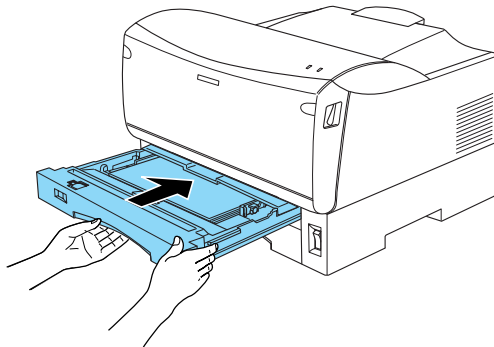
**Caution:**

*Be sure to set the paper size switch according to the size of the loaded paper. Otherwise, paper jams may occur.*

- Securely reattach the tray cover to the MP tray and close it.



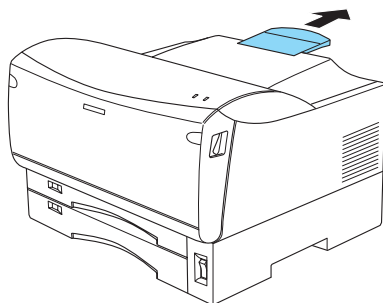
- Reinsert the MP tray in the printer.



**Note:**

*Make sure that you insert the MP tray as far as it will go inside the printer.*

10. Extend the output tray to accommodate the size of the paper loaded in the MP tray to prevent it from falling off the edge.



By default, the printer is set up to print on A4 size paper. If you are printing on any other paper size, you need to change the printer's paper size setting by using the paper size switch described above, and the printer driver.

## ***Loading an uncommon paper size***

You can print on the custom-size paper (paper ranging from 100 × 148 mm to 297 × 420 mm, weighing from 64 to 128 g/m<sup>2</sup>) using the MP tray.

### ***Note:***

*Use the paper of the ranging from 100 × 148 to 297 × 420 mm and weighing from 64 to 128 g/m<sup>2</sup>, and load the paper into the MP tray.*



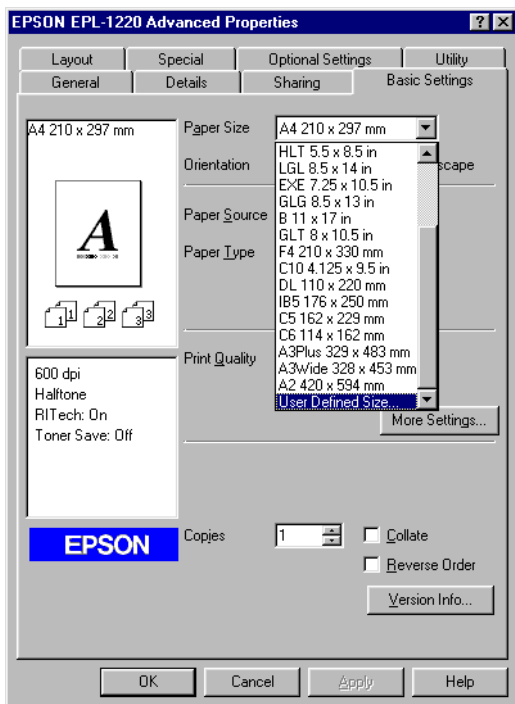
### **Caution:**

*Be sure to set the paper size switch to Others. Otherwise, paper jams may occur.*

## For Windows Users

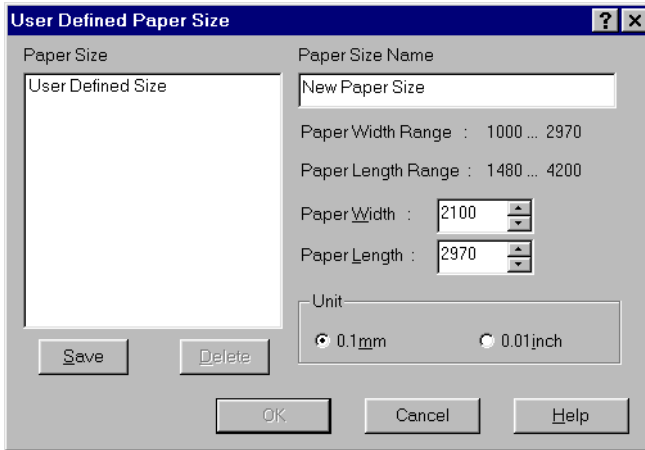
To print on the custom-size paper, specify the paper size on the printer driver, and set the paper size switch to Others on the MP tray.

1. Access the printer driver and click the Basic Settings tab.
2. Select the User Defined Size from the Paper Size drop down list. The User Defined Paper Size dialog box appears.





3. Type the name of the user defined paper size in the Paper Size Name box and select 0.1mm or 0.01inch as the unit. Then specify the size of your custom-size paper in Paper Width and Paper Length, and click Save to register the new paper size.



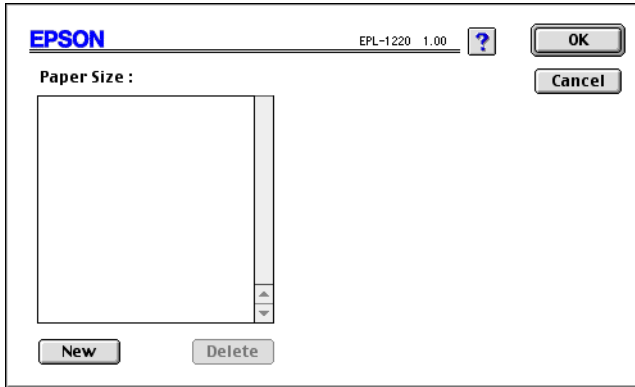
4. Click OK to close the User Defined Paper Size dialog box.
5. Click OK to accept the settings.

### ***For Macintosh Users***

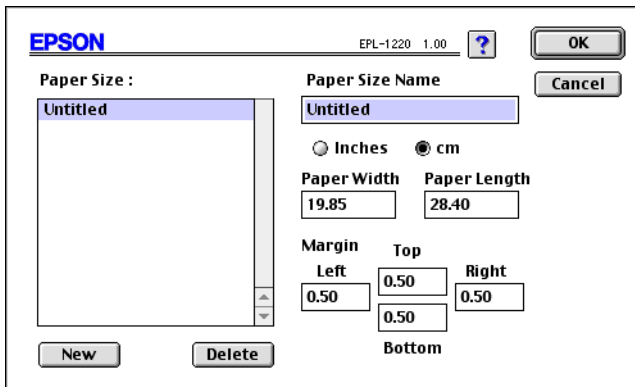
To print on the custom-size paper, select the paper size specified on the printer driver, and set the paper size switch to Others on the MP tray.

1. Access the printer driver and click Custom Size.

2. Click New.



3. Type the name of the user defined paper size in the Paper Size Name box and select inches or cm as the unit. Then specify the size of your custom-size paper in Paper Width and Paper Length, and the margin of each side.



4. Click OK to register the settings.
5. Select your new paper size from the Paper Size drop down list, then click OK.

---

## Printing on Special Media

You can use many kinds of media including stock paper, envelopes, labels, and overhead projector transparencies. The printer feeds most types of media automatically from the MP tray.

The type of paper you use in your printer can affect the quality of the printed output. The smoother the paper you use, the smoother and sharper your printing looks.

For best results, store your paper supply in its original wrapper. Your printouts can be marred by moisture absorbed in the paper. Do not store paper in a humid or damp environment.

### **Note:**

*Since the quality of any particular brand or type of paper may be changed by the manufacturer at any time, EPSON cannot guarantee the quality of any type of paper. Always test samples of paper stock before purchasing large quantities or printing large jobs.*

Below are some recommendations for selecting paper and other print media for your printer.

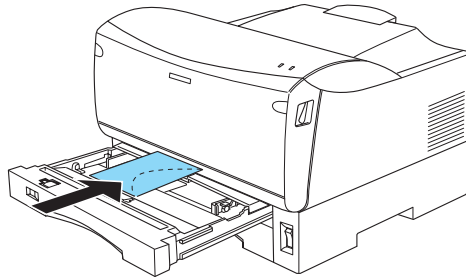
## Envelopes

Load envelopes in the MP tray with the flap edge to the right side (Commercial 10, International B5, DL) or the flap edge to the front of the MP tray (C5, C6) and the surface to print facing up. The printing quality on envelopes may be irregular because different parts of an envelope have different thicknesses. You can load up to 10 envelopes (depending on thickness.)

### **Note:**

- ❑ *Be sure to set the paper size switch to Others.*
- ❑ *Because thickness and surface characteristics are especially important for envelopes, test a sample for print quality and proper feeding before you buy a large number of envelopes.*

- ❑ *Do not use window envelopes unless they are specially designed for laser printers. The plastic on most window envelopes will melt when it comes into contact with the hot fuser.*



## **Labels**

Use only labels designed for laser printers or plain-paper copiers.

Use the MP tray when you print labels.

To prevent the adhesive from coming into contact with printer parts, always use labels that completely cover the backing sheet and there are no gaps between individual labels.

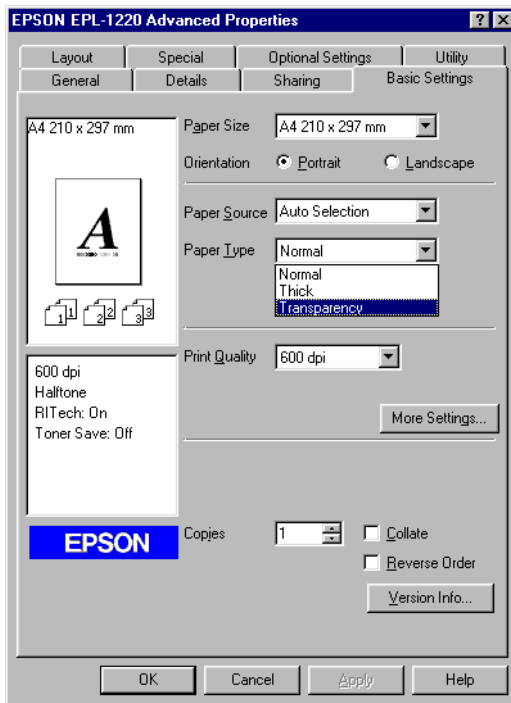
You should test the label sheet for leaking adhesive by pressing a sheet of paper on top of a sheet of labels. If the paper sticks to the label sheet when you lift it off, do not use the labels.

## Transparencies

You can use overhead projector transparencies and adhesive drafting film if they are made for use with plain-paper copiers or laser printers. Use the MP tray to print on these materials.

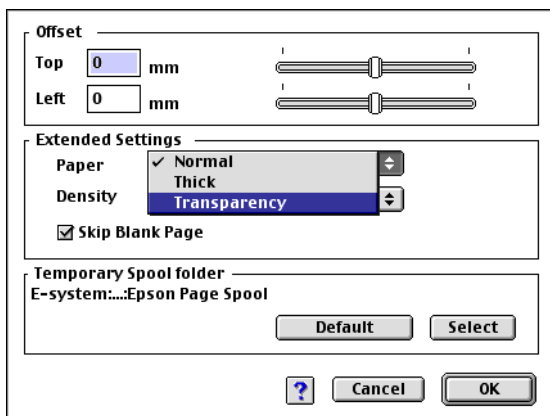
On Windows

When printing on transparencies, be sure to select Transparency from the Paper Type drop down list on the printer driver's Basic Settings.



On Macintosh

When printing on transparencies, be sure to select Transparency from the Paper drop down list on the printer driver's Extended Settings.



## ***Thick paper***

You can load up to 50 sheets of thick paper into the MP tray. Use the thick paper of a weight from 81.4 to 128 g/m<sup>2</sup> (21.7 to 34.1 lb).

When printing on thick paper, be sure to select Thick from the Paper Type drop down list on the printer driver's Basic Settings (on Windows) or the Paper drop down list on the printer driver's Extended Settings (on Macintosh).

---

# Using the Printer Driver

For Windows Users . . . . .	40
About the Printer Driver . . . . .	40
Accessing the Printer Driver . . . . .	40
Making Changes to Printer Settings. . . . .	41
Monitoring Your Printer (EPSON Status Monitor 3). . . . .	50
Setting for the USB connection . . . . .	57
Increasing the Printing Speed . . . . .	59
Canceling Printing . . . . .	62
Uninstalling the Printer Software. . . . .	62
For Macintosh Users . . . . .	67
About the Printer Driver . . . . .	67
Accessing the Printer Driver . . . . .	67
Making Changes to Printer Settings. . . . .	68
Monitoring Your Printer (EPSON Status Monitor 3). . . . .	75
Setting for the USB connection . . . . .	78
Canceling Printing . . . . .	80
Uninstalling the Printer Software. . . . .	80

---

## **For Windows Users**

### **About the Printer Driver**

The printer driver lets you choose from a wide variety of settings to get the best results from your printer. The printer driver also includes the EPSON Status Monitor 3 utility, which is accessed through the Utility tab. The EPSON Status Monitor 3 utility lets you check the status of your printer. See “About the EPSON Status Monitor 3 utility” on page 50 for more information.

### **Accessing the Printer Driver**

You can access the printer driver directly from any application programs, from your Windows operating system.

The printer settings made from many Windows applications override settings made when the printer driver is accessed from the operating system, so you should access the printer driver from your application to make sure that you get the result you want.

**Note:**

*Online help provides details on printer driver settings.*

- ❑ To access the printer driver from your application, click Print or Page Setup on the File menu. You also need to click Setup, Options, Properties, or a combination of these buttons.
- ❑ To access the printer driver from Windows, click Start, point to Settings, and click Printers. Next, right-click the EPSON EPL-1220 Advanced icon and click Properties (in Windows Me/98/95), Printing Preferences (in Windows 2000) or Document Defaults (in Windows NT 4.0).



# ***Making Changes to Printer Settings***

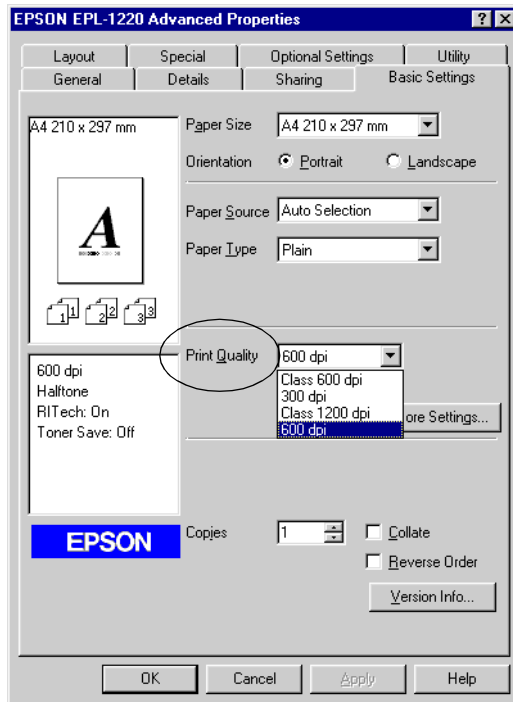
## ***Choosing the Print Quality***

You can change the print quality or resolution of printouts to favor speed or detail. If you need high quality output, choose a higher number. Please note that doing so reduces the print speed.

There are four levels of print output, 300 dpi, Class 600 dpi, 600 dpi, and Class 1200 dpi. Class 1200 dpi provides high quality printing results on par with 600 dpi with the Enh.MG and RITech functions.

1. Click the Basic Settings tab.

2. Select the desired printing resolution from the Print Quality drop down list.



3. Click OK to accept the setting.

**Note:**

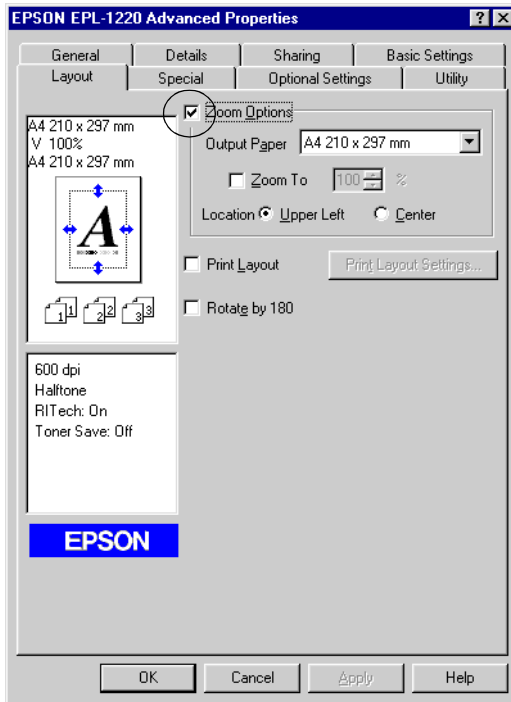
- ❑ *If printing is unsuccessful or a memory-related error message appears, selecting a lower resolution may allow printing to proceed.*
- ❑ *For details of the Enh.MG or RITech functions, see the Online Help.*

## Resizing printouts

You can have your document enlarged or reduced during printing.

To automatically resize pages to fit the output paper

1. Click the Layout tab.
2. Select the Zoom Options check box.

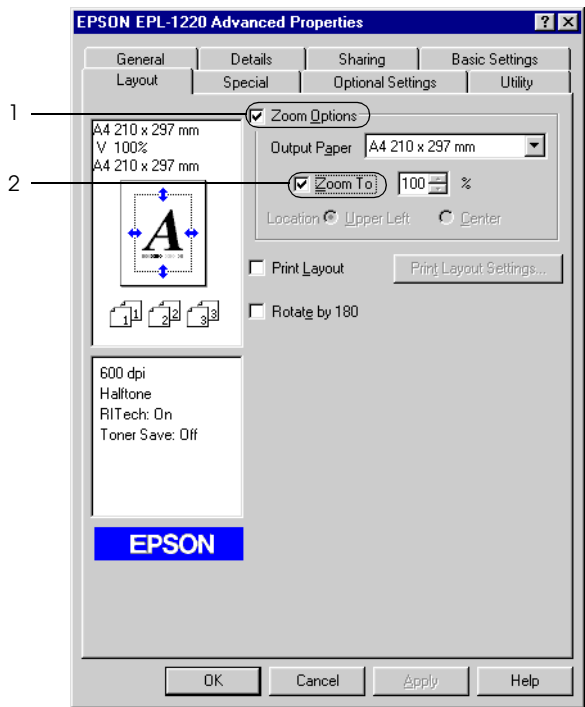


3. Select the desired paper size from the Output Paper drop-down list. The page will be printed to fit on the paper you have selected.

4. Select Upper Left for location to print a reduced page image at the upper left corner of the paper. Select Center to print a reduced page image that is centered.
5. Click OK to accept the settings.

*To resize pages by a specified percentage*

1. Click the Layout tab.
2. Select the Zoom Options check box, then select the Zoom To check box.



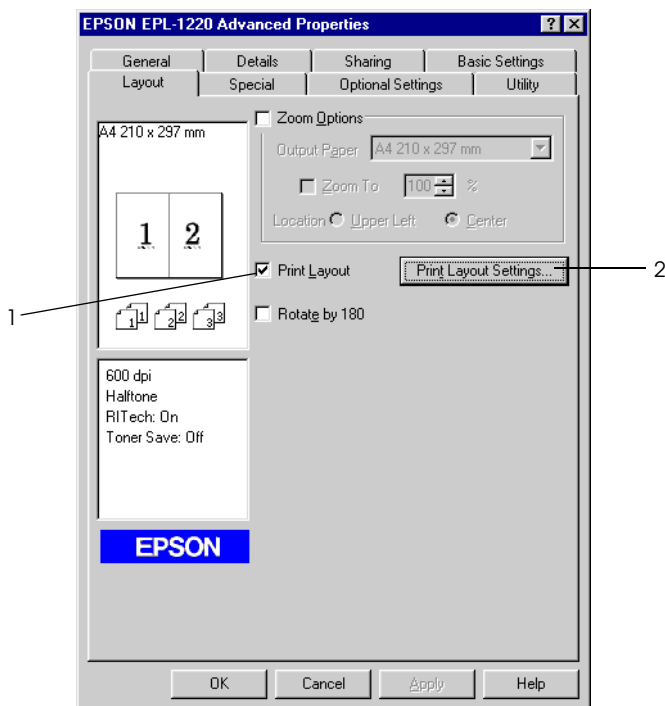
3. Specify the magnification percentage in the box, then click OK. The percentage can be set between 50% and 200% in 1% increments.

If necessary, select the paper size to be printed from the Output Paper drop-down list.

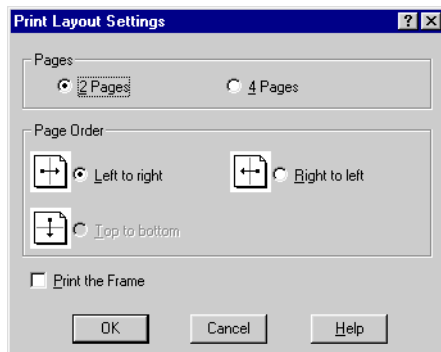
## Modifying the Print Layout

“Layout printing” prints either two or four pages onto a single page and specifies the printing order, automatically resizing each page to fit the specified paper size. You can also choose to print documents surrounded by a frame.

1. Click the Layout tab.
2. Select the Print Layout check box, and click Print Layout Settings. The Print Layout Settings dialog box appears.



3. Select the Number of Pages you want to print on one sheet of paper.



4. Select the Page Order in which the pages are printed on each sheet.

**Note:**

*The Page Order choices depend on the Pages selected above, and the paper orientation (Portrait or Landscape) selected on the Basic Settings tab.*

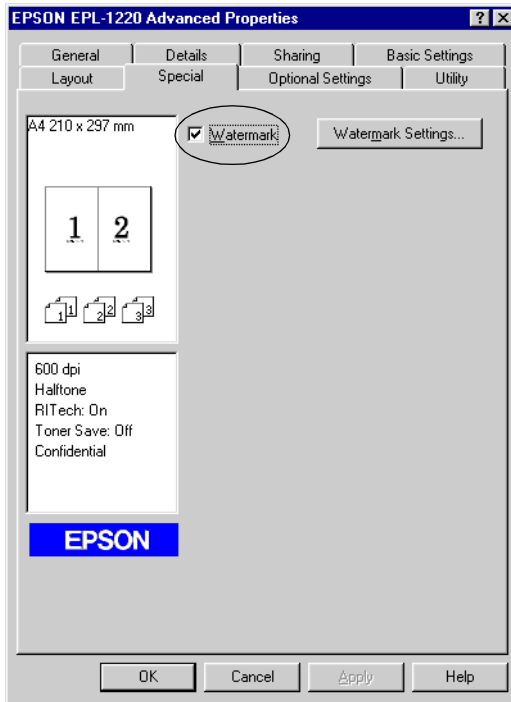
5. Click OK to close the Print Layout Settings dialog box.
6. Click OK on the Layout tab to accept the settings.

## **Using a Watermark**

Follow the steps to use a watermark on your document. In the Watermark dialog box, you can select from a list of predefined watermarks, and you can make your original watermark with text or a bitmap (.BMP) file. The Watermark dialog box also allows you to make a variety of detailed watermark settings. For example, you can select the size, intensity, and position of your watermark.

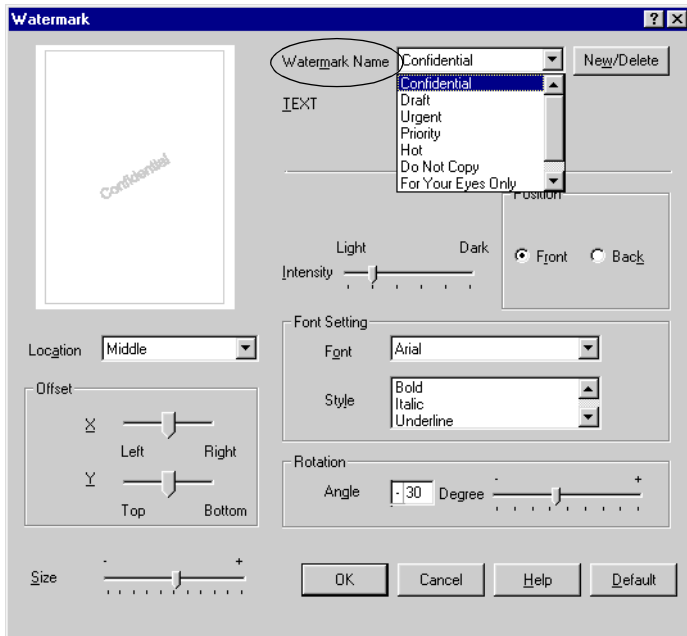
1. Click the Special tab.

2. Select the Watermark check box.



3. Click Watermark Settings. The Watermark dialog box appears.

4. Select a watermark from the Watermark Name drop-down list.



5. Select the location on the page where you want to print the watermark from the Location list box.
6. Adjust the horizontal or vertical Offset position.
7. Adjust the image intensity of the watermark with the Intensity slider bar.
8. Adjust the size of the watermark with the Size slider bar.
9. Select Front (to print the watermark on the face of the document) or Back (to print the watermark on the backside of the document) for the Position setting.
10. Click OK to accept the settings.



## *Making a new watermark*

You can make a new watermark as follows:

1. Click the Special tab.
2. Select the Watermark check box.
3. Click Watermark Settings. The Watermark dialog box appears.
4. Click New/Delete. The User Defined Watermarks dialog box appears.
5. Select Text or BMP and type a name for the new watermark in the Name box.
6. If you select Text, type the watermark text in the Text box. If you select BMP, click Browse, select the BMP file you want to use, then click OK.

**Note:**

*Before making a custom watermark, you should prepare a bitmap (.bmp) file.*

7. Click Save to save new watermark, and then click OK to close the User Defined Watermarks dialog box. Your watermark will appear in the list box.
8. Click OK to register the new watermark settings.

## **Monitoring Your Printer (EPSON Status Monitor 3)**

### **About the EPSON Status Monitor 3 utility**

The EPSON Status Monitor 3 is a utility program that monitors your printer and gives you information about its current status. For example, you can find out the amount of remaining toner through this utility. If a print error occurs, the utility provides you with a message describing the error. The Status Monitor 3 utility is accessed from within the printer driver. See the following section for more information.

Before using Status Monitor 3, be sure to read the printer driver's README file. This file contains the latest information on the printer driver and Status Monitor 3.

### **Accessing the EPSON Status Monitor 3**

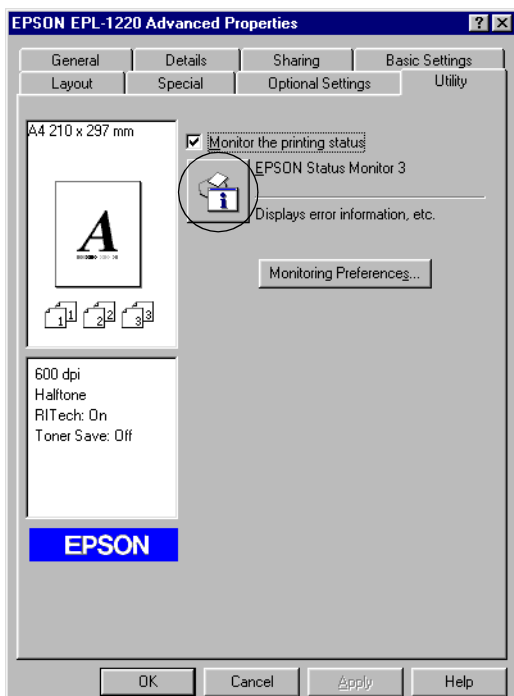
The EPSON Status Monitor 3 monitors the printer during printing and while the EPSON Status Monitor 3 dialog box is open.

You can access the EPSON Status Monitor 3 directly from any application programs, from your Windows operating system.

- ❑ To access the EPSON Status Monitor 3 from your application, click the Print or Page Setup command on the File menu. You also need to click Setup, Options, Properties, or a combination of these buttons. Then click the Utility tab, and click the EPSON Status Monitor 3 icon to start the EPSON Status Monitor 3 utility.

- ❑ To access the EPSON Status Monitor 3 from Windows, click Start, point to Settings, and click Printers. Next, right-click Properties (in Windows Me/98/95), Printing Preferences (in Windows 2000) or Document Defaults (in Windows NT 4.0).

Then click the Utility tab, and click the EPSON Status Monitor 3 icon to start the EPSON Status Monitor 3 utility.

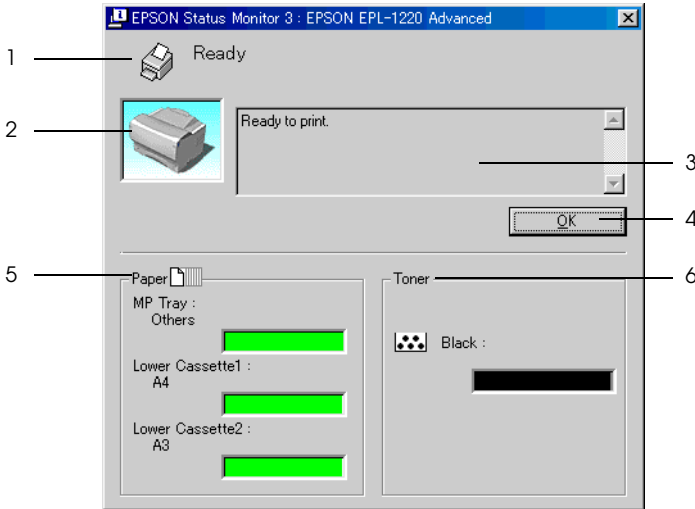


**Note:**

*Clearing the Monitor the printing status check box during normal operation causes the Status Alert window to stop monitoring some errors. See "Status Alert window" on page 56 for more information on this function.*

## Getting printer status details

You can monitor printer status and get information on consumable products using the EPSON Status Monitor 3 dialog box.

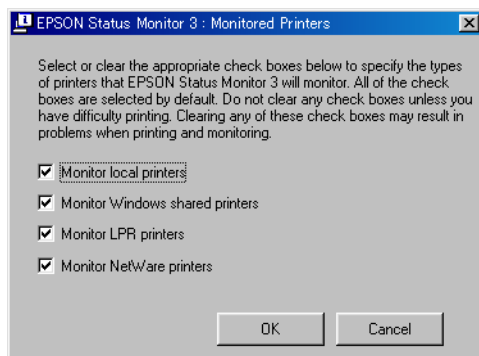


1. **Icon/Message:** The icon and message shows the printer status.
2. **Printer image:** The image at the upper left shows the printer status graphically.
3. **Text box:** The text box next to the printer image displays the current status of the printer. When a problem occurs, the most probable solution is displayed.
4. **OK button:** Clicking this button closes the dialog box.
5. **Paper:** Displays the paper size and the approximate amount of paper remaining in the paper source. Information for the optional 250-Sheet Lower Paper Cassette Unit is displayed only if this option is installed.
6. **Toner:** Indicates the amount of remaining toner. The toner icon flashes if toner is low (5 percent or less).

## Monitored printers settings

You can use “Monitored Printers” utility, to change the type of printers that EPSON Status Monitor 3 will monitor. When you install the EPSON Status Monitor 3, this utility is also installed. Usually, it is not necessary to change a setup. Use this utility when you want change the settings for some reason.

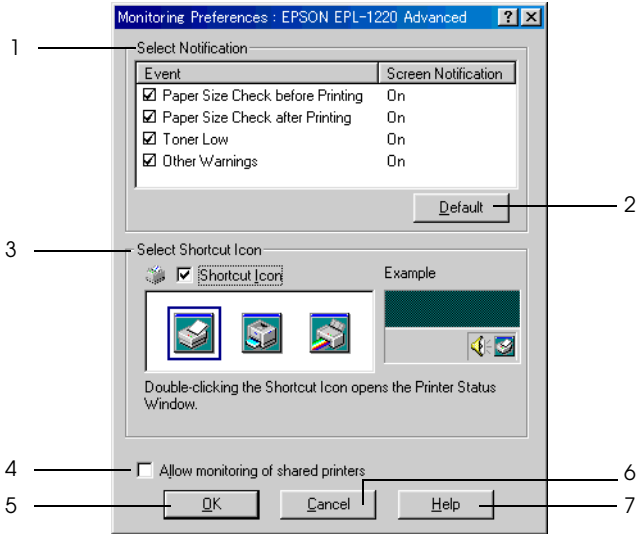
1. Click Start, point to Program, point to EPSON, then click Monitored printers.
2. Clear the check box of the printer which is not monitored.



3. Click OK.

## Setting Monitoring Preferences

To make specific monitoring settings, click Monitoring Preferences in the Utility tab of the printer driver. The Monitoring Preferences dialog box appears.



The following settings and buttons appear in the dialog box:

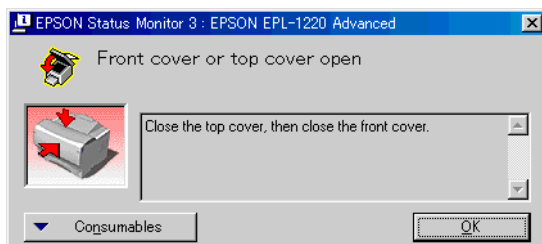
1. Select Notification: Use the check boxes in this area to select the types of error that you wish to be notified about.
2. Default button: Restores default settings.

3. Select Shortcut Icon: To use the shortcut icon, select the Shortcut Icon check box and choose an icon. The icon you select appears on the right side of the task bar.  
Once the shortcut icon is in the task bar, you can double-click it to open the Status Monitor 3 dialog box.  
Alternatively, you can right-click the shortcut icon and select Monitoring Preferences to open the Monitoring Preferences dialog box, and EPSON EPL-1220 Advanced to open the EPSON Status Monitor 3 dialog box.
4. Allow monitoring of shared printers box: To monitor a shared printer, select this check box. You need to make this setting on the server machine.
5. OK button: Saves new changes.
6. Cancel button: Cancels any changes.
7. Help button: Opens online help for the Monitoring Preferences dialog box.

## Status Alert window

This window indicates what type of error has occurred and offers you a possible solution. It closes automatically once the problem is cleared.

The Status Alert window opens under the conditions you select in the Monitoring Preferences dialog box.



If you wish to see information about printer consumables, click Consumables. Once this button is clicked, the Status Alert window will not disappear even after a problem is cleared. To close the box you need to click OK.

## Stopping monitoring

The EPSON Status Monitor 3 monitors the printer during printing and while the EPSON Status Monitor 3 dialog box is open.

To monitor during printing only, close the EPSON Status Monitor 3 dialog box.

To stop all monitoring completely, clear the Monitor the Printing Status check box in the printer driver's Utility tab. You may want to do this to speed up printing or if you don't need to monitor the printer at all.



If you clear the Monitor the Printing Status check box, the Status Alert window no longer comes up to notify you when an error occurs. However, you can still find out the current printer status by clicking the EPSON Status Monitor 3 icon in the printer driver's Utility tab.

**Note:**

*The Monitor the Printing Status check box is displayed in the Utility tab of Document Defaults in Windows NT 4.0, or in the Utility tab of Printing Preference in Windows 2000.*

## **Setting for the USB connection**

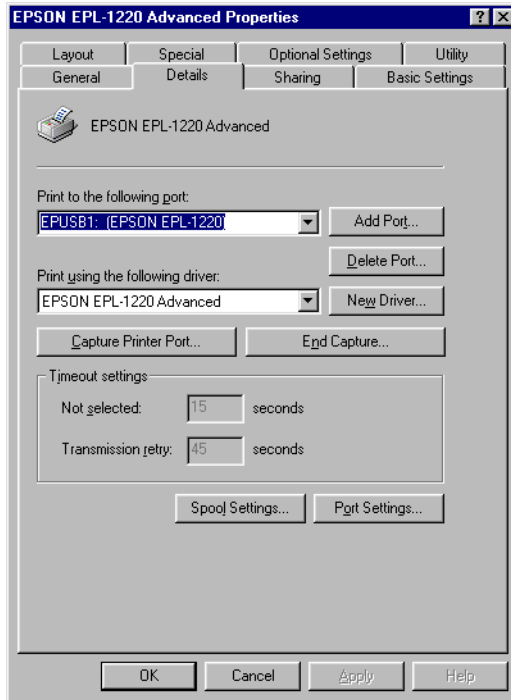
The USB interface that comes with your printer complies with Microsoft Plug and Play (PnP) USB specifications.

**Note:**

*Only PC systems equipped with a USB connector and running Windows Me/98/2000 respectively support the USB interface.*

1. Click Start, point to Settings, and then click Printers.
2. Right-click the EPSON EPL-1220 Advanced icon, and click Properties in the menu that appears.
3. Select the Details tab.

4. Click the arrow next to the Print to the following port drop-down list. In Windows Me or 98, select EPUSB1: (EPSON EPL-1220). In Windows 2000, check USB001 in the list on the Ports menu.



5. Click OK to save this setting.

## ***Increasing the Printing Speed***

Faster printing with Direct Memory Access (DMA) is possible if your printer is connected to your computer through an Extended Capability Port (ECP), a type of parallel port with expanded specifications. With DMA and ECP, you can send print-job data directly to the printer without going through the CPU, which increases the effectiveness of data flow.

Before using DMA to transmit a print job confirm the following points.

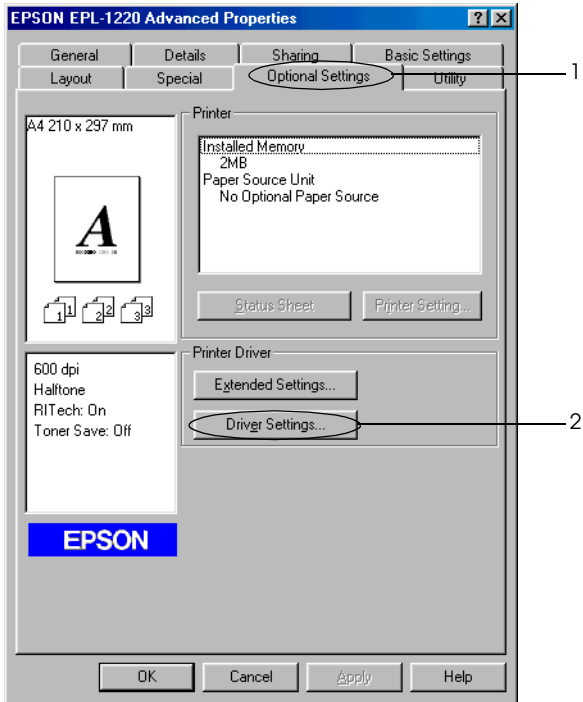
- ❑ Check if your computer supports DMA. To confirm if your computer has an ECP chip installed, contact the manufacturer or look in the computer's documentation.
- ❑ Confirm the parallel port setting is "ECP" or "ENHANCED" through the BIOS Setup. Refer to your computer's documentation to set the BIOS. However, before setting the BIOS, uninstall the EPL-1220 printer driver. After setting the BIOS, reinstall the printer driver.

### *Confirming availability of DMA*

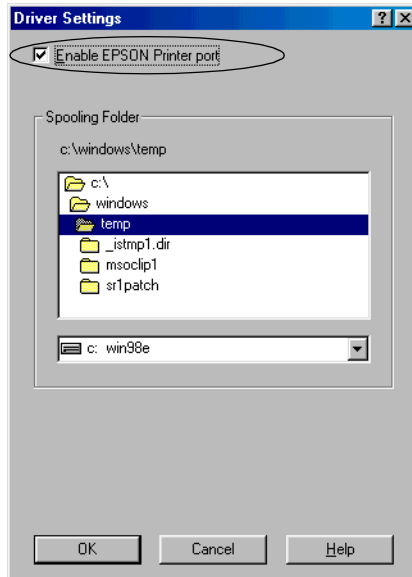
Using DMA increases your printing speed. You can confirm if your computer can use DMA by selecting the Driver Settings dialog box on the Optional Settings menu of the Properties of your printer driver.

1. Click Start, point to Settings, and click Printers.
2. Right-click the EPSON EPL-1220 Advanced icon, and click Properties in the menu that appears.

3. Click the Optional Settings tab, and click Driver Settings.



4. Select the Enable EPSON Printer port check box.

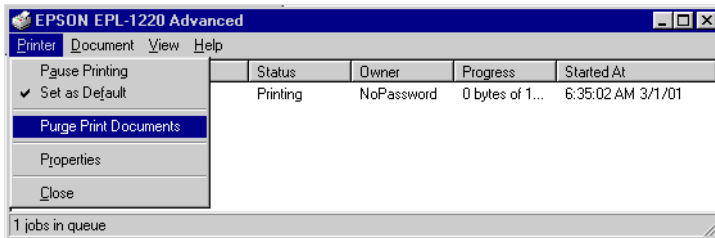


## Canceling Printing

1. Double-click the printer icon on the task bar.



2. Open the Printer menu and select Purge Print Documents (for Windows 2000 users, select Cancel All Documents).



## Uninstalling the Printer Software

When you wish to reinstall or upgrade the printer driver, be sure to uninstall the current printer software beforehand.

### *Note:*

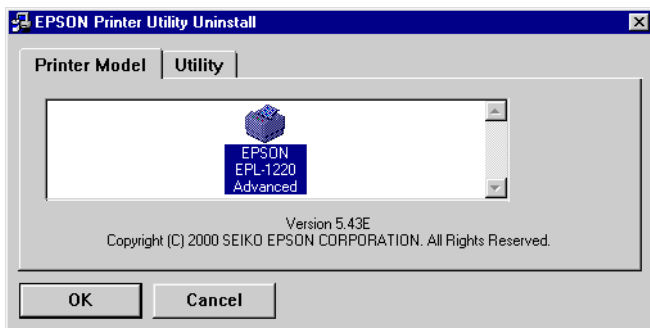
*You can uninstall the printer driver and EPSON Status Monitor 3 by following the on-screen instructions in the CD-ROM that comes with your printer.*

1. Close all applications.
2. Click Start, point to Settings, and click Control Panel.
3. Double-click the Add/Remove Programs icon.

4. Select EPSON Printer Software, and click Add/Remove.

When using the Windows 2000 computer, click Change/Remove Program, select EPSON Printer Software, and then click Add/Remove.

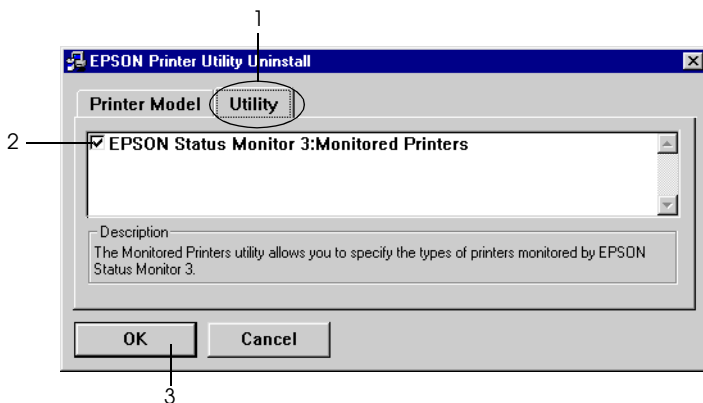
5. Click the Printer Model tab, select the EPSON EPL-1220 Advanced icon then click OK.



**Note:**

*You can uninstall only the utility for Monitored Printers of EPSON Status Monitor 3. When that utility is uninstalled, you cannot change the setting of Monitored Printers from the EPSON Status Monitor 3 utility of other printers.*

Select the EPSON Status Monitor 3:Monitored Printers check box and click OK.



6. Follow the on-screen instructions.

**Note:**

*When “Remove the related file” appears, click Yes.*

### **Additional driver**

Follow these steps to uninstall the additional drivers from the Windows 2000 printer server:

**Note:**

- The additional driver that is installed in the Windows NT 4.0 printer server cannot be uninstalled. Even if the printer driver is uninstalled from the Windows NT 4.0 printer server, the additional driver may not be uninstalled.*
- When upgrading the additional driver in Windows NT 4.0 printer server, install the upgraded printer driver as the additional driver.*

1. Close all applications.
2. Click Start, point to Settings, and click Printers.
3. Open the File menu and select Server Properties.
4. Click the Drivers tab and the Installed printer drivers list appears.
5. Select the driver to be uninstalled and click Remove.
6. Click Yes.
7. Click Close to close the properties.



## **USB Device Driver**

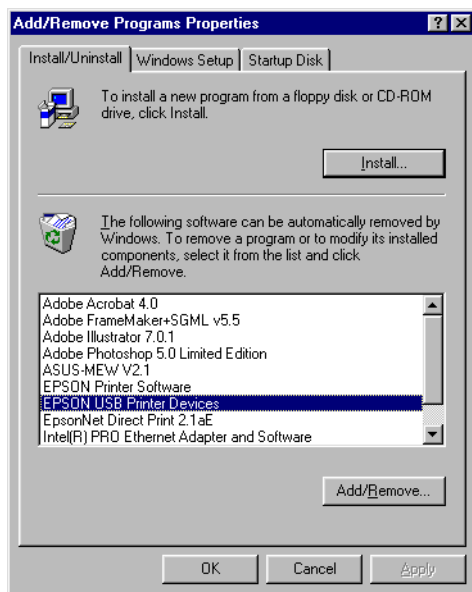
You need the USB device driver when connecting the printer to Windows 98/Me with a USB interface cable.

Follow these steps to uninstall the USB device driver:

**Note:**

- Uninstall the printer driver before uninstalling the USB device driver.*
  - When the USB device driver is uninstalled, you cannot access the other EPSON printers connected with USB interface cable.*
1. Follow steps 1 through 3 of “Uninstalling the Printer Software” on page 62.

2. Select EPSON USB printer device, and click Add/Remove.



**Note:**

- ❑ EPSON USB printer device appears only when the printer is connected to Windows Me/98 with a USB interface cable.
  - ❑ If the USB device driver is not installed correctly, EPSON USB printer device may not appear. Follow these steps to run the "Epusbun.exe" file in the CD-ROM that comes with your printer.
    1. Insert the CD-ROM in the CD-ROM drive of your computer.
    2. Access the CD-ROM by using the software such as Windows Explorer.
    3. Double-click the Win9x folder.
    4. Double-click the Epusbun.exe icon.
3. Follow the on-screen instructions.

---

## ***For Macintosh Users***

### ***About the Printer Driver***

The printer driver lets you choose from a wide variety of settings to get the best results from your printer. The printer driver also includes the EPSON Status Monitor 3 utility, which is accessed through the Apple menu. The EPSON Status Monitor 3 utility lets you check the status of your printer. See “About the EPSON Status Monitor 3 utility” on page 75 for more information.

### ***Accessing the Printer Driver***

To control your printer and change its settings, use the printer driver. The printer driver allows you to easily make all the print settings, including paper source, paper size, and orientation.

To access the printer driver and open appropriate dialog box, select **Chooser** from the Apple menu and click the **EPL-1220** icon beforehand.

- To open the Paper Setting dialog box, select **Page Setup** from the **File** menu on any application.
- To open the Basic Setting dialog box, select **Print** from the **File** menu on any application.
- To open the Layout dialog box, click the layout icon on the Basic Setting dialog box.

### ***Accessing Online Help***

You can access the Online Help from the printer driver. The Online Help provides you with detailed information and instructions on the printer driver that controls your printer. It is automatically installed when you install the printer driver.

# Making Changes to Printer Settings

## Choosing the Print Quality

You can change the print quality or resolution of printouts to favor speed or detail. If you need high quality output, choose a higher number. Please note that doing so reduces the print speed.

There are four levels of print output, 300 dpi, Class 600 dpi, 600 dpi, and Class 1200 dpi. Class 1200 dpi provides high quality printing results on par with 1200 dpi with the Enh.MG and RITech functions.

1. Open the Basic Setting dialog box.
2. Select Automatic on Print Quality, and select the desired printing resolution from the Resolution drop down list.

### **Note:**

- If printing is unsuccessful or a memory-related error message appears, selecting a lower resolution may allow printing to proceed.*
- For details of the Enh. MG or RITech functions, see the Online Help.*

## **Modifying with Resizing Printouts**

The Fit to page function in the Layout dialog box allows you to have your documents enlarged or reduced during printing according to the specified paper size.

### **Note:**

- The enlarging or reducing rate is automatically specified according to the paper size selected in the Paper Setting dialog box.*
- The modifying or reducing rate selected in the Paper Setting dialog box is not available.*

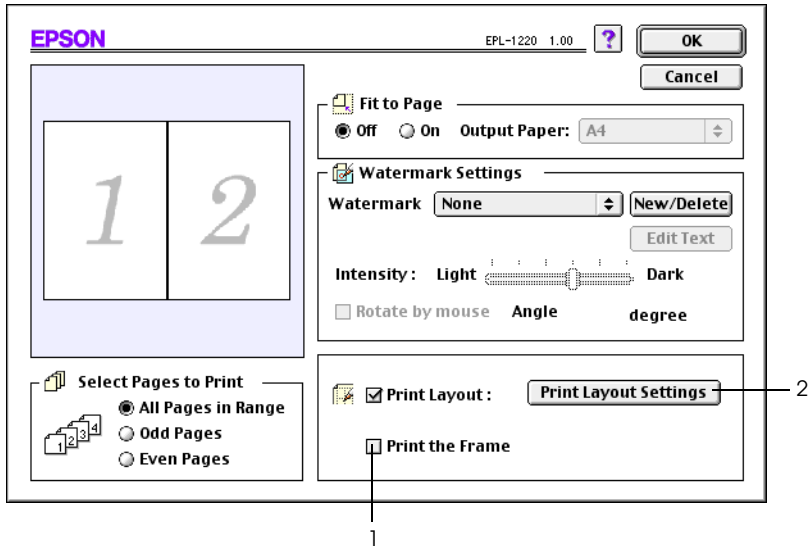
1. Open the Layout dialog box.
2. Select On on Fit to Page.
3. Select the desired paper size from the Output Paper drop-down list. The page will be printed to fit on the paper you have selected.
4. Click OK to accept the settings.

## **Modifying the Print Layout**

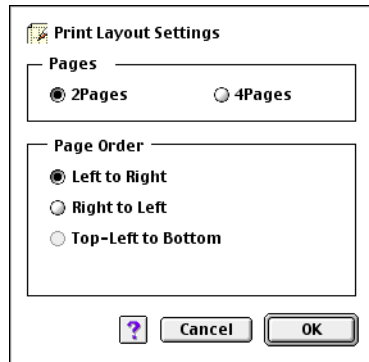
“Layout printing” prints either two or four pages onto a single page and to specify the printing order, automatically resizing each page to fit the specified paper size. You can also choose to print documents surrounded by a frame.

1. Open the Layout dialog box.

2. Select the Print Layout check box, then click Print Layout Settings. The Print Layout Settings dialog box appears.



3. Select the number of pages you want to print on one sheet of paper.



4. Select the page order in which the pages are printed on each sheet.

**Note:**

Page Order choices depend on Pages selected above, and Orientation.

5. Click OK to close the Print Layout Setting dialog box.
6. Select Print the Frame in the Layout dialog box when you want to print the pages surrounded by a frame.
7. Click OK in the Layout dialog box to accept the settings.

### ***Using a Watermark***

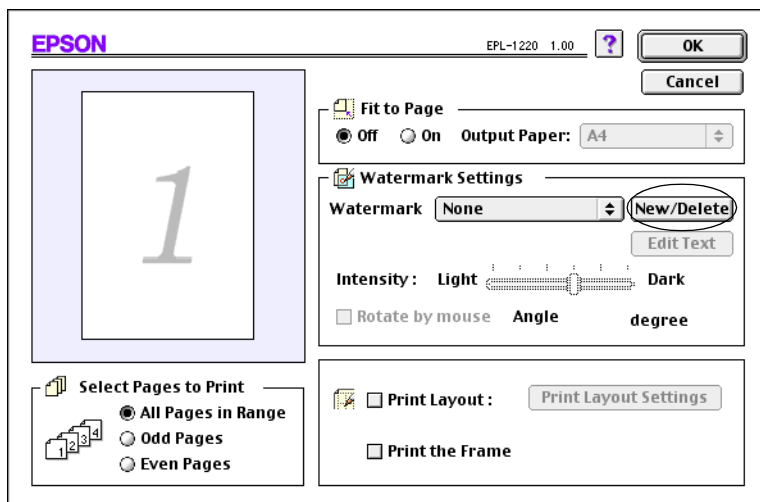
Follow the steps to use a watermark on your document. In the Layout dialog box, you can select from a list of predefined watermarks, or you can select a bitmap (PICT) file or text file as your own custom watermark. The Layout dialog box also allows you to make a variety of detailed watermark settings. For example, you can select the size, intensity, and position of your watermark.

1. Open the Layout dialog box.
2. Select a watermark from the Watermark drop-down list.
3. Select the location on the page where you want to print the watermark by dragging the watermark image on the preview window. Also, when you want to resize the watermark, drag its handle.
4. Adjust the image intensity of the watermark with the Intensity slider bar.
5. For a text watermark, you can rotate it by inputting the degrees in the Angle box. Or, select the Rotate by mouse check box, and rotate the text watermark with the pointer on the preview window.
6. Click OK to accept the settings.

## Making a New Watermark

To make a text watermark

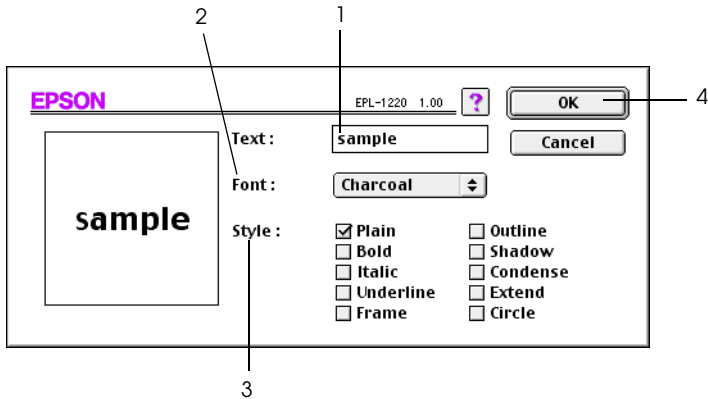
1. Open the Layout dialog box.
2. Click New/Delete.



3. Click Add Text.



4. Type the watermark text in the Text box, and select the Font and Style, and then click OK.



5. Type the file name in the Name box, and click Save.

**Note:**

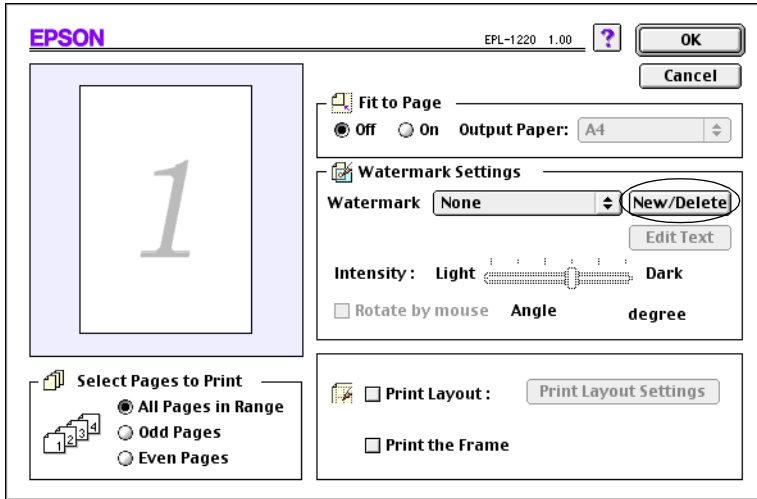
- ❑ To edit the saved text watermark, select it from List, and click Edit Text. After editing, be sure to click OK to close the dialog box.
  - ❑ To remove the saved text watermark, select it from List, and click Delete. After removing, be sure to click Save to close the dialog box.
6. Click OK on the Layout dialog box. The saved watermark is displayed on the preview window.

### To make a bitmap watermark

Before making a custom watermark, you should prepare a bitmap (PICT) file.

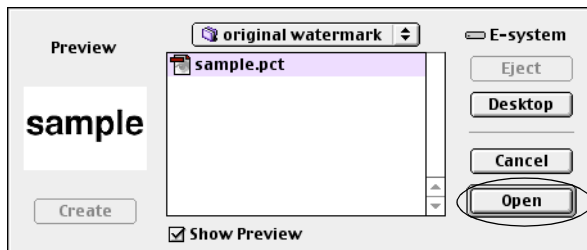
1. Open the Layout dialog box.

2. Click New/Delete.



3. Click Add PICT.

4. Select the PICT file and click Open. When you click Create, the watermark is displayed on the preview window.



5. Type the file name in the Name box, and click Save.

**Note:**

*To remove the saved watermark, select it from List, and click Delete. After removing it, be sure to click Save to close the dialog box.*

6. Click OK on the Layout dialog box. The saved watermark is displayed on the preview window.

## **Monitoring Your Printer (EPSON Status Monitor 3)**

### **About the EPSON Status Monitor 3 utility**

The EPSON Status Monitor 3 is a utility program that monitors your printer and gives you information about its current status. For example, you can find out the amount of remaining toner through this utility. If a print error occurs, the utility provides you with a message describing the error. The Status Monitor 3 utility is accessed from within the printer driver. See the following section for more information.

Before using Status Monitor 3, be sure to read the printer driver's README file. This file contains the latest information on the printer driver and Status Monitor 3.

### **Starting the EPSON Status Monitor 3**

The EPSON Status Monitor 3 monitors the printer during printing and while the EPSON Status Monitor 3 dialog box is open.

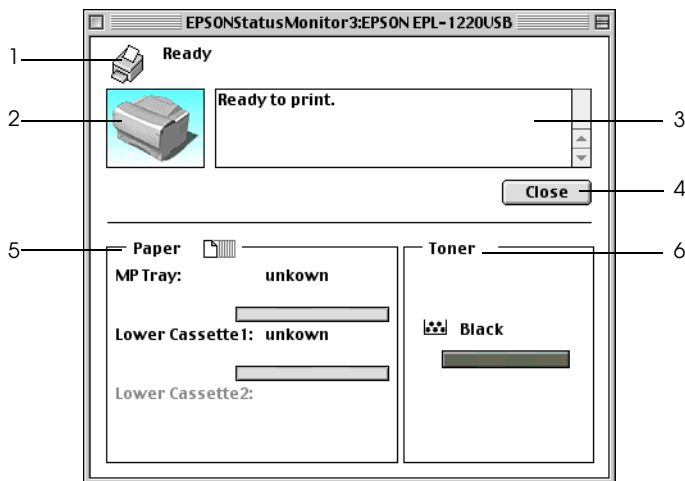
You can access the EPSON Status Monitor 3 utility by selecting the EPSON Status Monitor 3 alias in the Apple menu.

**Note:**

- ❑ *The appropriate printer port must already be selected in the Chooser so that necessary information can be received from the selected printer driver when the EPSON Status Monitor 3 starts. If the printer port is not correct, an error will occur.*
- ❑ *If you change the printer driver in the Chooser while the spool file is printing in the background, output to the printer may be disrupted.*
- ❑ *Printer and consumable products status information appears in the status window only if the Chooser is acquiring status normally.*

## Getting Detailed Information about Printer Status

You can monitor printer status and get information on consumable products using the EPSON Status Monitor 3 dialog box.

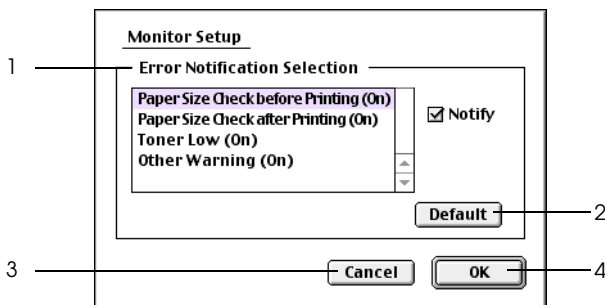


1. Icon/Message: The icon and message shows the printer status.

2. **Printer image:** The image at the upper left shows the printer status graphically.
3. **Text box:** The text box next to the printer image displays the current status of the printer. When a problem occurs, the most probable solution is displayed.
4. **Close button:** Clicking this button closes the dialog box.
5. **Paper:** Displays the paper size and the approximate amount of paper remaining in each paper source. Information for the optional 250-Sheet Lower Paper Cassette Unit is displayed only if this option is installed.
6. **Toner:** Indicates the amount of remaining toner. The toner icon flashes if toner is low (5 percent or less).

## Setting Monitoring

To make specific monitoring settings, select Monitor Setup from the File menu. The Monitor Setup dialog box appears.



The following settings and the buttons appear in the dialog box.

1. Error Notification Selection: Select the types of error that you wish to be notified about.
2. Default button: Restores default settings.
3. Cancel button: Cancels any changes.
4. OK button: Saves new changes.

### **Status Alert Window**

This window indicates what type of error has occurred and offers you a possible solution. It closes automatically once the problem is cleared.

If you wish to see information about printer consumables, click Show Details. If you click this button, the Status Alert Window will not disappear even after the problem is cleared. To close the box you need to click OK or Close.

**Note:**

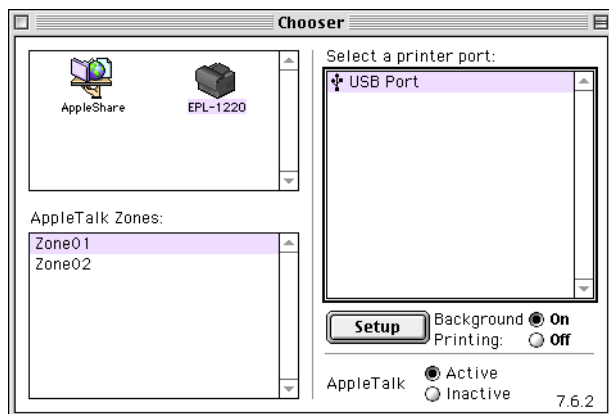
*The Status Alert window automatically appears when a problem occurs with your printer.*

### **Setting for the USB connection**

**Note:**

*If you are connecting the USB cable to your Macintosh through a USB hub, be sure to connect using the first hub in the chain. The USB interface may be unstable depending on the hub used. If you experience problems with this type of setup, connect the USB cable directly to your computer's USB connector.*

1. Select Chooser from the Apple menu. Click your printer's icon and then click the USB port your printer is connected to.



2. Select Background Printing to turn background printing on or off.

**Note:**

- ❑ *Background printing must be turned on for the EPSON Status Monitor 3 to manage print jobs.*
  - ❑ *When background printing is on, you can use your Macintosh while it is preparing a document for printing.*
3. Close the Chooser.

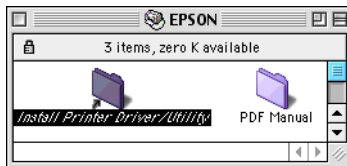
## Canceling Printing

1. Press the Period (.) key while pressing the Command key to cancel printing. Depending on applications, the message shows the procedure to cancel printing during printing. If this appears, follow the message.
2. During background printing, open the EPSON Monitor 3 from the Application menu. Then stop printing from the EPSON Monitor 3, or delete the file which is in standby mode.

## Uninstalling the Printer Software

When you wish to reinstall or upgrade the printer driver, be sure to uninstall the current printer software beforehand.

1. Quit all applications, and restart your Macintosh.
2. Insert the EPSON printer software CD-ROM in your Macintosh.
3. Open the Printer Driver Installer folder, and then the folder of the printer being used.





4. Double-click the installer icon.



5. Click Continue.
6. Select Remove from the menu at the upper left.
7. Click Remove, then follow the on-screen instructions.

## Chapter 4

---

# **Setting Up Your Printer as a Shared Printer for Windows**

Setting up your printer as a shared printer . . . . .	84
Using an Additional Driver . . . . .	86
Setting for the clients . . . . .	92
With Windows Me/98/95 . . . . .	93
With Windows 2000 . . . . .	95
With Windows NT 4.0 . . . . .	98
Installing the Printer Driver from the CD-ROM . . . . .	100

## About the shared printer

This section describes how to share the printer on a standard Windows network.

The computers on a network can share the printer that is directly connected to one of them. The computer that is directly connected to the printer is the printer server, and the other computers are the clients which need permission to share the printer with the printer server. The clients share the printer via the printer server.

According to the versions of Windows OS and your access right on a network, perform the appropriate settings of the printer server and clients.

- ❑ “Setting up your printer as a shared printer” on page 84. (For Windows Me/98/95 printer server).
- ❑ “Using an Additional Driver” on page 86. (For Windows 2000/NT 4.0 printer server)
- ❑ “With Windows Me/98/95” on page 93.
- ❑ “With Windows 2000” on page 95.
- ❑ “With Windows NT 4.0” on page 98.

### **Note:**

- ❑ *When sharing the printer, be sure to set the EPSON Status Monitor 3 so that the shared printer can be monitored on the printer server. See “Monitoring Your Printer (EPSON Status Monitor 3)” on page 50.*
- ❑ *When the IPX/SPX compatible protocol setting is turned on in Windows Me/98/95, you may have a communication error. To avoid this error, disable IPX/SPX compatible protocol.*
- ❑ *The printer server and clients should be set on the same network system, and they should be under the same network management beforehand.*

- *The on-screen displays on the following pages may differ depending on the version of Windows OS.*

---

## **Setting up your printer as a shared printer**

When the printer server's OS is Windows Me/98/95, follow these steps to set the printer server:

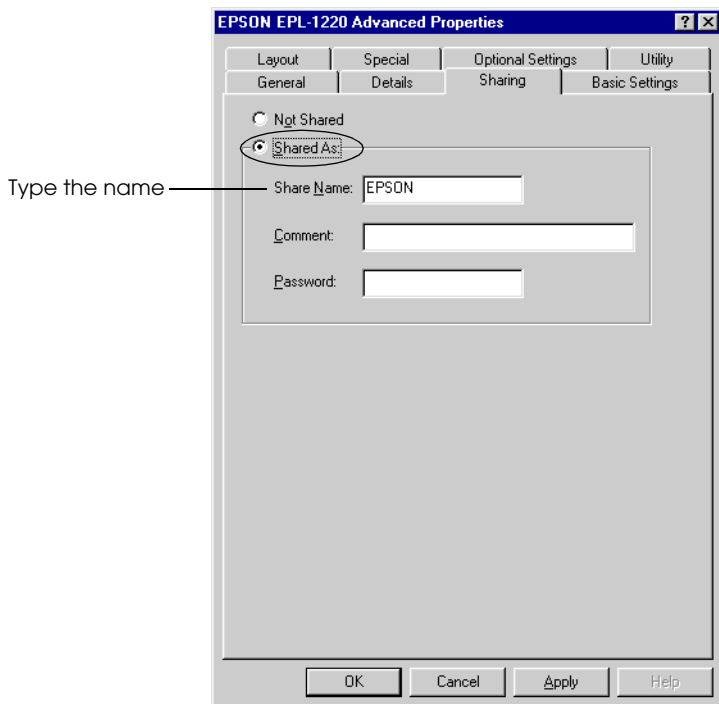
1. Click Start, point to Settings, and click Control Panel.
2. Double-click the Network icon.
3. Click File and Print Sharing on the Configuration tab.
4. Select the "I want to be able to allow others to print to my printer(s)." check box, then click OK.
5. Click OK to accept the settings.

### **Note:**

- *When "Insert the Disk" appears, insert the Windows Me/98/95 CD-ROM in the computer. Click OK and then follow the on-screen instructions.*
- *When the prompt to restart the computer appears, restart the computer and continue the setting. See "For users restarting the computer" on page 85.*

## For users restarting the computer

1. Double-click the Printers icon on the control panel.
2. Right-click the EPSON EPL-1220 Advanced icon, and click Sharing in the menu that appears.
3. Select Shared As, type the name in the Share Name box, and click OK. Type Comment and Password if needed.



### Note:

- ❑ Do not use spaces or hyphens for the share name, or an error may occur.
- ❑ When sharing the printer, be sure to set the EPSON Status Monitor 3 so that the shared printer can be monitored on the printer server. See "Monitoring Your Printer (EPSON Status Monitor 3)" on page 50.

You need to set the client computers so that they can use the printer on a network. See the following pages for details:

- ❑ “With Windows Me/98/95” on page 93.
- ❑ “With Windows 2000” on page 95.
- ❑ “With Windows NT 4.0” on page 98.

---

## ***Using an Additional Driver***

When the printer server’s OS is Windows 2000 or Windows NT 4.0, you can install the additional drivers in the server. The additional drivers are the drivers for the client computers that have different OS from the server.

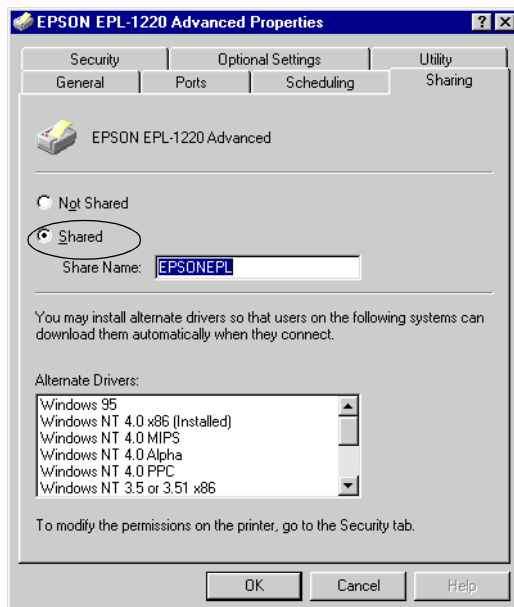
Follow these steps to set a Windows 2000 or Windows NT 4.0 as a printer server, and install the additional drivers:

***Note:***

*You must access to Windows 2000 or Windows NT 4.0 as the Administrators of the local machine.*

1. Click Start, point to Settings, and click Printers.
2. Right-click the EPSON EPL-1220 Advanced icon, and click Sharing in the menu that appears.

3. Select Shared (for Windows 2000 users, select Shared as), then type the name in the Share Name box.



**Note:**

*Do not use spaces or hyphens for the share name, or an error may occur.*

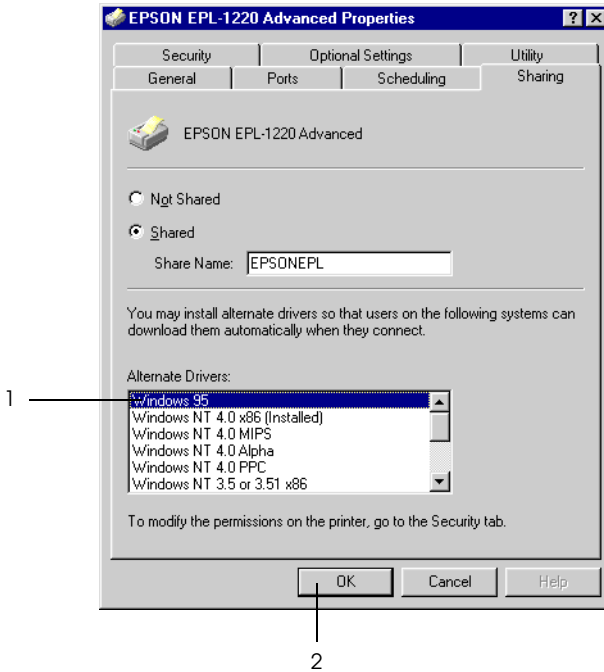
4. Select the additional drivers.

**Note:**

*When the computers of the server and clients use the same OS, you do not have to install the additional drivers.*

On the Windows NT 4.0 printer server

Select Windows being used for clients. For example, select Windows 95 to install the additional driver for the Windows Me/98/95 clients. Then click OK.



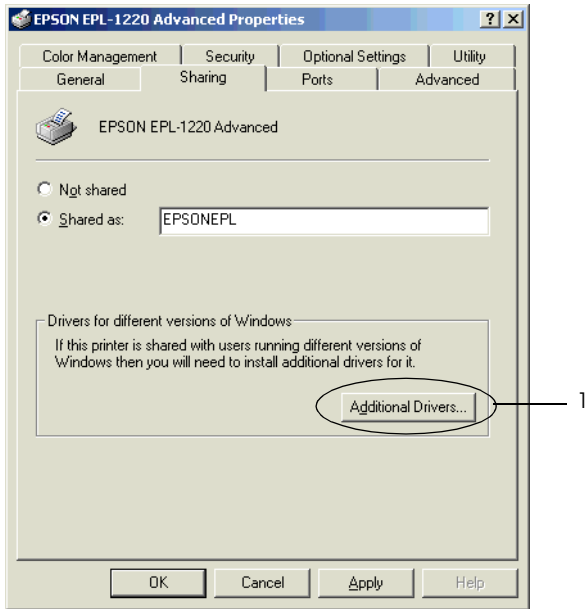
**Note:**

- ❑ *You do not have to install the additional driver for Windows NT 4.0 or Windows 2000, because that driver is preinstalled.*
- ❑ *Do not select additional drivers other than Windows 95. The other additional drivers are not available.*

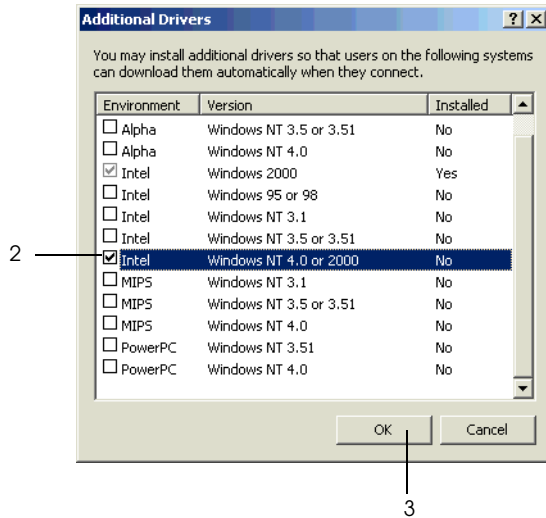


On the Windows 2000 printer server

Click Additional Drivers



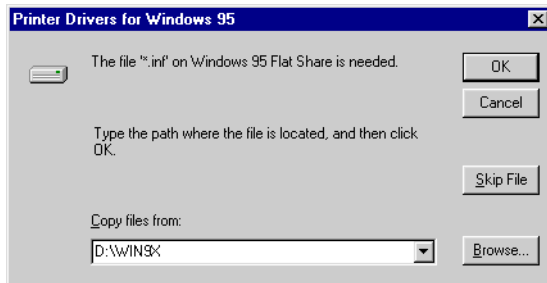
Select Windows being used for clients. For example, select Intel Windows 95 or 98 to install the additional driver for the Windows Me/98/95 clients.  
Select Intel Windows NT 4.0 or 2000 to install the additional driver for the Windows NT 4.0 clients.



**Note:**

- You do not have to install the additional driver only for Intel Windows 2000, because that driver is preinstalled.
  - Do not select additional drivers other than Intel Windows 95 or 98 and Intel Windows NT 4.0 or 2000. The other additional drivers are not available.
5. When the prompt appears, insert the CD-ROM that comes with your printer in your CD-ROM drive, then click OK.

- According to the message, type the appropriate drive and folder names in which the printer driver for clients is located, then click OK.  
Depending on the client's OS, the displayed message may differ.



The folder name differs depending on the OS being used.

Client's OS	Folder Name
Windows Me/98/95	WIN9X
Windows NT 4.0	WINNT40

When installing drivers in Windows 2000, "Digital Signature is not found." may appear. Click Yes and continue installing.

- When installing in Windows 2000, click Close. When installing in Windows NT 4.0, the property window closes automatically.

**Note:**

*Confirm the following items when sharing the printer.*

- Be sure to set the EPSON Status Monitor 3 so that the shared printer can be monitored on the printer server. See "Monitoring Your Printer (EPSON Status Monitor 3)" on page 50.

- ❑ *Set the security for the shared printer (access license for clients). Clients can not use the shared printer without license. For details, see Windows help.*

You need to set the client computers so that they can use the printer on a Network. See the following pages for details:

- ❑ “With Windows Me/98/95” on page 93.
- ❑ “With Windows 2000” on page 95.
- ❑ “With Windows NT 4.0” on page 98.

---

## **Setting for the clients**

This section describes how to install the printer driver by accessing the shared printer on a network.

### **Note:**

- ❑ *To share the printer on a Windows network, you need to set the printer server. For details, see “Setting up your printer as a shared printer” on page 84.*
- ❑ *This section describes how to access the shared printer on a standard network system using the server (Microsoft workgroup). When you cannot access the shared printer due to the network system, ask the administrator of the network.*
- ❑ *This section describes how to install the printer driver by accessing the shared printer from the Printers folder. You can also access the shared printer from Network Neighborhood or My Network on the Windows desktop.*

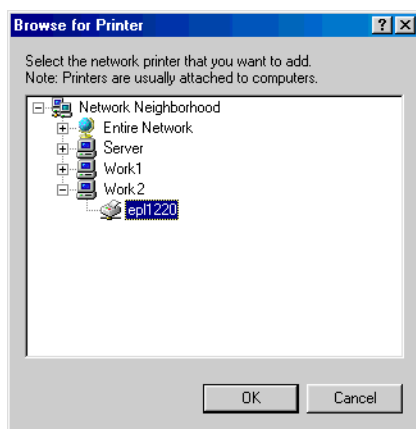
## With Windows Me/98/95

Follow these steps to set Windows Me/98/95 clients:

1. Click Start, point to Settings, and click Printers.
2. Double-click the Add Printer icon, then click Next.
3. Select Network printer, then click Next.
4. Click Browse, and the Browse for Printer dialog box appears.

You can also type "\\(the name of the computer that is locally connected to the shared printer)\(the shared printer's name)" in Network path or queue name.

5. Click the computer or server that is connected to the shared printer, and the name of the shared printer. Then click OK.



### **Note:**

*The name of the shared printer may be changed by the computer or server that is connected to the shared printer. To make sure of the name of the shared printer, ask the administrator of the network.*

6. Click Next.

**Note:**

- ❑ *When the printer driver is installed in the client beforehand, you need to select using the new printer driver or the current printer driver. When the prompt to select the printer driver appears, select the printer driver according to the message.*
- ❑ *When the printer server's OS is Windows Me/98/95 or the additional driver for Windows Me/98/95 is installed in the Windows 2000/NT 4.0 printer server, go to the next step.*
- ❑ *When the additional driver for Windows Me/98/95 is not installed in the Windows 2000/NT 4.0 printer server, go to "Installing the Printer Driver from the CD-ROM" on page 100.*

7. Make sure of the name of the shared printer, and select whether to use the printer as the default printer or not. Click OK, and then follow the on-screen instructions.

**Note:**

*You can change the shared printer's name so that it appears only on the client computer.*

## ***With Windows 2000***

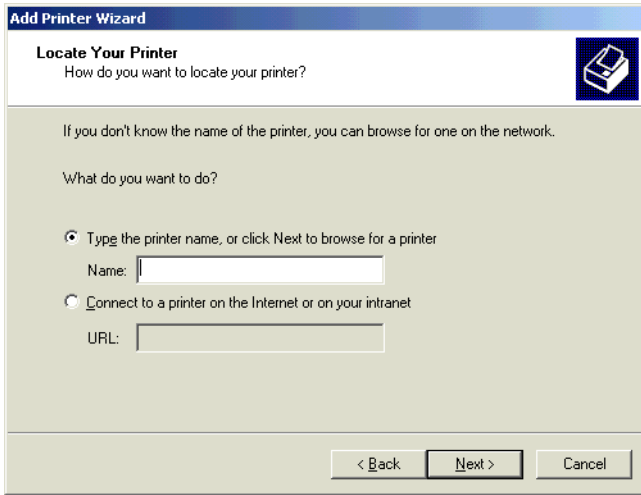
Follow these steps to set Windows 2000 clients:

You can install the printer driver of the shared printer, when you have the Power Users or more powerful access right even if you do not have the Administrator.

When the printer server's OS is Windows NT 4.0, confirm the following items:

- ❑ In Windows NT 4.0 printer server, the additional driver for Windows 2000 clients is the "Windows NT 4.0 x86" driver which is installed beforehand as the printer driver for Windows NT 4.0. When installing the printer driver in the Windows 2000 clients from Windows NT 4.0 printer server, the driver for Windows NT 4.0 is installed.
- ❑ You can not install the printer driver for Windows 2000 as the additional driver in the Windows NT 4.0 printer server. To install the printer driver for Windows 2000 in the Windows 2000 clients, the administrator installs the local printer driver in the clients from the CD-ROM which comes with the printer, then performs the following procedure.
  1. Click Start, point to Settings, and click Printers.
  2. Double-click the Add Printer icon, then click Next.
  3. Select Network printer, then click Next.

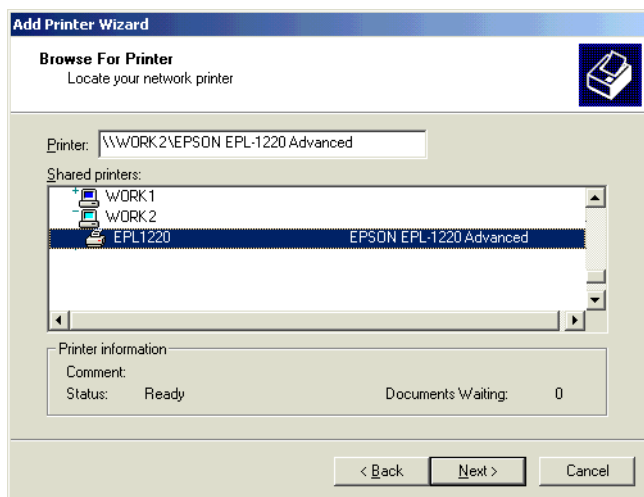
4. Type the name of the shared printer or click Next.



You can also type “\\(the name of the computer that is locally connected to the shared printer)\(the shared printer’s name)” in Network path or queue name.



5. Click the icon of the computer or server that is connected to the shared printer, and the name of the shared printer. Then click OK.



**Note:**

- ❑ *The name of the shared printer may be changed by the computer or server that is connected to the shared printer. To make sure of the name of the shared printer, ask the administrator of the network.*
- ❑ *When the printer driver is installed in the client beforehand, you need to select using the new printer driver or the current printer driver. When the prompt to select the printer driver appears, select the printer driver according to the message. When the local printer driver for Windows 2000 is installed beforehand, you can select the printer driver for Windows 2000 as the current printer driver instead of the alternative driver in Windows NT 4.0 server.*
- ❑ *The additional driver for Windows 2000 (NT 4.0) is installed in the Windows 2000/NT 4.0 printer server, go to the next step.*

- ❑ *To use the printer driver for Windows 2000 on the client, install the local printer driver for Windows 2000 in the client from the CD-ROM beforehand. When performing the procedures in this section, select the installed local printer driver as the printer driver.*
  - ❑ *When the additional driver is not installed in the Windows NT 4.0 printer server or the printer server's OS is Windows Me/98/95, go to "Installing the Printer Driver from the CD-ROM" on page 100.*
6. Select whether to use the printer as the default printer or not, then click OK.
  7. Make sure of the settings, then click Finish.

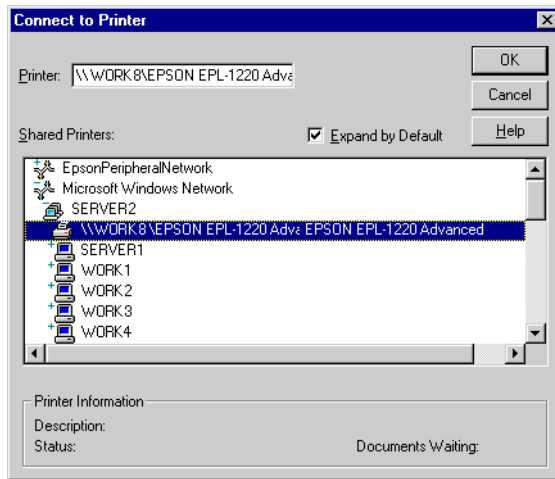
## **With Windows NT 4.0**

Follow these steps to set Windows NT 4.0 clients:

You can install the printer driver of the shared printer, when you have the Users or more powerful access right even if you do not have the Administrator.

1. Click Start, point to Settings, and click Printers.
2. Double-click the Add Printer icon.
3. Select Network printer server, then click Next.

4. Click the icon of the computer or server that is connected to the shared printer and the name of the shared printer. Then click OK.



You can also type "\\(the name of the computer that is locally connected to the shared printer)\(the shared printer's name)" in Network path or queue name.

### Note:

- ❑ *The name of the shared printer may be changed by the computer or server that is connected to the shared printer. To make sure of the name of the shared printer, ask the administrator of the network.*
- ❑ *When the printer driver is installed in the client beforehand, you need to select the new printer driver or the current printer driver. When the prompt to select the printer driver appears, select the printer driver according to the message.*
- ❑ *The additional driver for Windows NT 4.0 is installed in the Windows 2000 printer server, go to the next step.*

- When the additional driver for Windows NT 4.0 is not installed in the Windows 2000 printer server or the printer server's OS is Windows Me/98/95, go to "Installing the Printer Driver from the CD-ROM" on page 100.*
5. Select whether to use the printer as the default printer or not, then click OK.
  6. Click Finish.

---

## ***Installing the Printer Driver from the CD-ROM***

This section describes how to install the printer driver in the clients when setting the network system as follows:

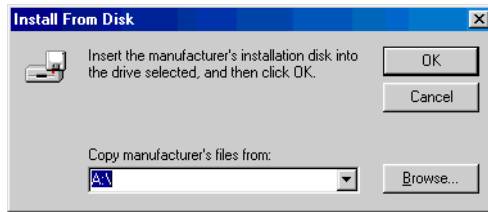
- The additional drivers are not installed in the Windows 2000/NT 4.0 printer server.
- The printer server's OS is the Windows Me/98/95 and the client's OS is the Windows 2000/NT 4.0.

The on-screen displays on the following pages may differ depending on the version of Windows OS.

### ***Note:***

- When installing in Windows 2000/NT 4.0 clients, you must access to Windows 2000/NT 4.0 with the Administrator.*
  - When the additional drivers are installed or the computers of the server and clients use the same OS, you do not have to install the printer drivers from the CD-ROM.*
1. Access the shared printer and the prompt may appear. Click OK, and then follow the on-screen instructions.

2. Type the appropriate drive and folder names in which the printer driver for clients is located, then click OK.



When installing drivers in Windows 2000, “Digital Signature is not found.” may appear. Click Yes and continue installing.

The folder name differs depending on the OS being used.

Client's OS	Folder Name
Windows Me/98/95	WIN9X
Windows 2000	WIN2000
Windows NT 4.0	WINNT40

3. Select the name of the printer, then click OK. Then follow the on-screen instructions.

## Chapter 5

---

# ***Installing and Removing Options***

250-Sheet Lower Paper Cassette Unit A3 Universal.....	103
Installing.....	103
Removing.....	105
Memory Module .....	106
Installing.....	106
Removing.....	110

---

## **250-Sheet Lower Paper Cassette Unit A3 Universal**

The optional 250-Sheet Lower Paper Cassette Unit A3 Universal (C813741) is designed for A3, A4, B4, B5, A5, and Letter (LT) size paper and accommodates 250 sheets of plain paper.

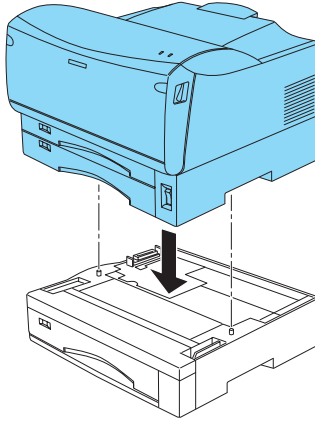
To load paper into the lower cassette, see “Loading Paper” on page 24.

### ***Installing***

Follow these steps to install the 250-Sheet Lower Paper Cassette Unit:

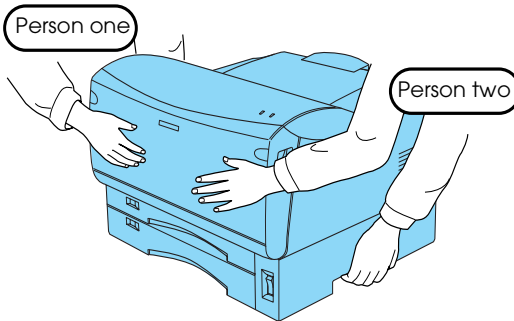
1. Make sure that the printer is turned off, and unplug the power cord if it is plugged into an electrical outlet. Then remove all interface cables.
2. Place the 250-Sheet Lower Paper Cassette Unit in the location where the printer is installed.

3. Lift up the printer and set it on the 250-Sheet Lower Paper Cassette Unit.



**Caution:**

- ❑ Since the printer weighs approximately 17 kg, lift up the printer by two people as shown below.
- ❑ When lifting up the printer, do not hold the parts other than those shown below.





4. Connect the interface cables, then plug the power code.

**Note:**

*When you use a Macintosh computer, go to step 7.*

5. Turn on the printer.
6. Access the printer driver. The EPSON EPL-1220 Advanced Properties dialog box appears, and the optional settings are applied. The 250-Sheet Lower Paper Cassette Unit is shown on the Optional Settings tab. And then click OK.

**Note:**

*The 250-Sheet Lower Paper Cassette Unit is shown as "Lower Cassette" on the Optional Settings tab.*

7. Print a status sheet to confirm that the 250-Sheet Lower Paper Cassette Unit is installed correctly. For details, see "Printing a Status Sheet" on page 120.

**Note:**

*When the 250-Sheet Lower Paper Cassette Unit is installed correctly, the available paper sources (MP Tray, LC1, and LC2) are listed on the status sheet.*

## **Removing**

To remove the 250-Sheet Lower Paper Cassette Unit, perform the steps in "Installing" conversely.

---

## Memory Module

Your printer is provided with 2 MB of standard memory. You can increase printer memory up to 13 MB by installing an optional SIMM (Single In-line Memory Module). Increasing the printer memory allows you to print complex or graphics-intensive documents.

You can purchase SIMMs from various vendors. Make sure that the SIMM you purchase meets the following requirements:

Memory size	4 MB, 8 MB, 16 MB, or 32 MB
Type	72-pin, EDO mode type
Access speed	60 ns or less
Measurements	Dimensions within 108 mm (4.25 in.) × 26 mm (1.02 in.), with a thickness of 10 mm (0.4 in.)

### **Note:**

*When you install a 4 MB or 8 MB SIMM, the total printer memory is the standard 2 MB plus the optional SIMM. However, even if you install an optional 16 MB or 32 MB SIMM, the total printer memory is increased to its maximum of 13 MB only.*

## Installing

Follow these steps to install an optional memory module:



### **Caution:**

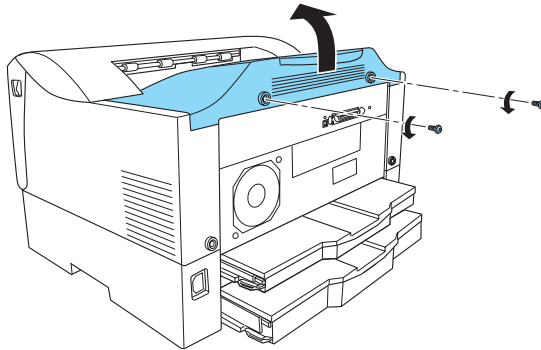
*Before you install a memory module, be sure to discharge any static electricity by touching a grounded piece of metal. Otherwise, you may damage static-sensitive components.*



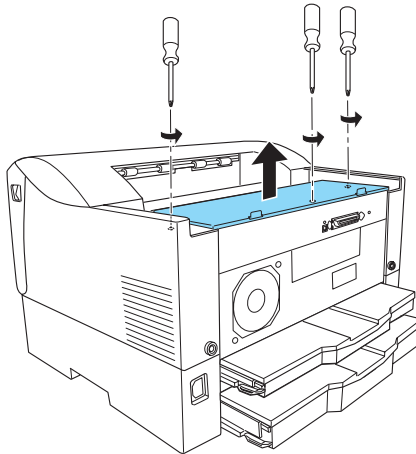
### **Warning:**

*Be careful when working inside the printer as some components are sharp and may cause injury.*

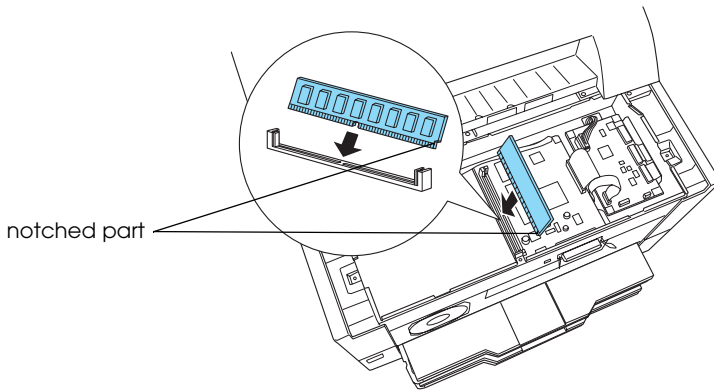
1. Make sure that the printer is turned off, and unplug the power cord if it is plugged into an electrical outlet. Then remove the all interface cables.
2. Remove the screws that secure the rear cover, then remove the rear cover.



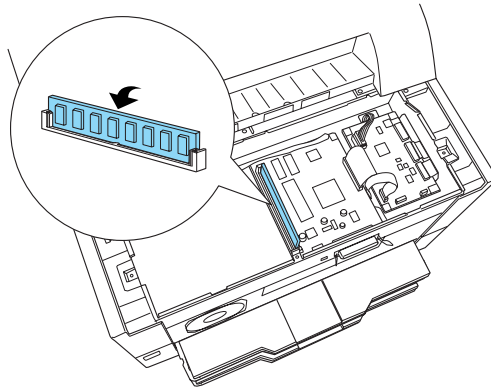
3. Remove the screws that secure the metal cover, then remove the metal cover.



4. Be aware of the notched part, insert the SIMM into the RAM slot at an angle until the SIMM reaches the end.



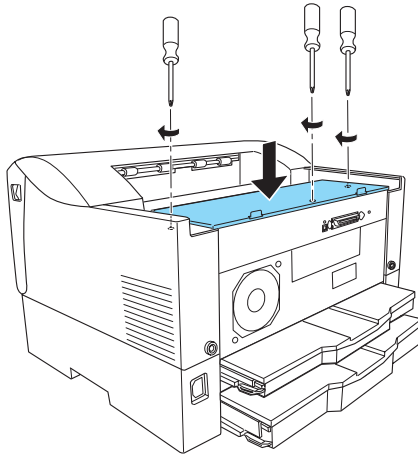
5. Set the SIMM upright.



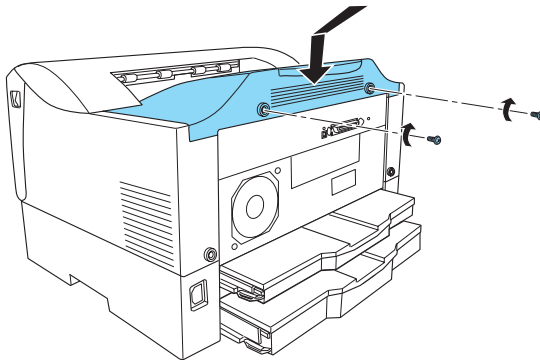
**Caution:**

- Do not force the SIMM into the slot.
- Be sure to insert the SIMM facing the correct way.
- Do not remove any modules from the circuit board. Otherwise, the printer will not work.

6. Replace the metal cover, then secure it with its screws.



7. Replace the rear cover, then secure it with its screws.



8. Connect the interface cables, then plug the printer's power cord into an electrical outlet.

9. Turn on the printer.

To confirm that the memory module is installed correctly, print a status sheet. When you install a 4 MB or 8 MB SIMM, the total printer memory is the standard 2 MB plus the optional SIMM. However, even if you install an optional 16 MB or 32 MB SIMM, the total printer memory is increased to its maximum of 13 MB only. If not, try reinstalling the module. Make sure that the module is securely attached to the SIMM slot on the circuit board. For more information, see “Printing a Status Sheet” on page 120.

## Removing

Follow these steps to remove a memory module:



**Caution:**

*Before you remove a memory module, be sure to discharge any static electricity by touching a grounded piece of metal. Otherwise, you may damage static-sensitive components.*



**Warning:**

*Be careful when working inside the printer as some components are sharp and may cause injury.*

1. Follow steps 1 through 3 of “Installing” on page 103 to access the circuit board.
2. Push the clips on each side of the slot outward to release the memory module.
3. Grasp both sides of the memory module and pull the module out.



**Caution:**

*Do not remove any other modules from the circuit board. Otherwise, the printer will not work.*

4. Store the memory module in an anti-static packet such as the one it came packaged in.
5. Follow steps 6 through 9 of “Installing” on page 106 to complete the procedure.

---

**Replacing the Imaging Cartridge**

Replacing.....113



---

## Replacing

The imaging cartridge prints up to 10,000 pages depending on the complexity of your print jobs. (The imaging cartridge shipped with the printer prints up to 5,000 pages.)

If your printed images become faint, access the EPSON Status Monitor 3 to find out approximately how much toner remains in the imaging cartridge.

When replacing a cartridge, be sure to use the imaging cartridge with the product number S051079. Even if you have a cartridge other than the S051079, do not use it; order the S051079 cartridge because it is specially designed for your high-quality 600-dpi printer.

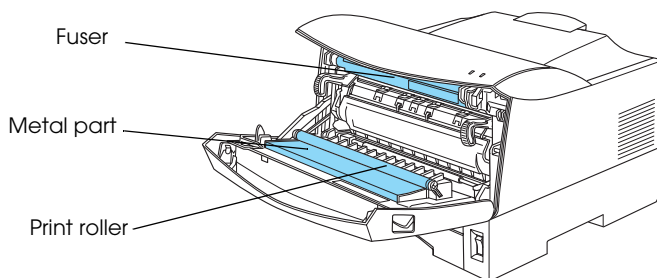
EPSON recommends the use of genuine EPSON imaging cartridges. Other products not manufactured by EPSON may cause damage to your printer and will not be covered by EPSON's warranties.

Follow these steps to replace the imaging cartridge:

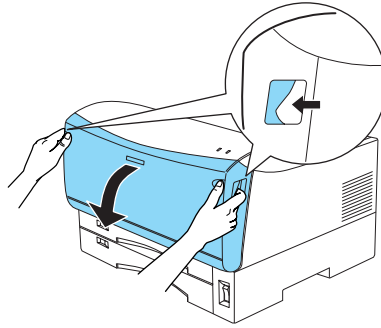


**Warning:**

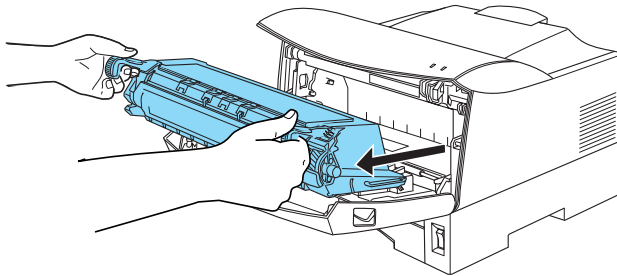
*Be careful not to touch the following parts, when opening the printer's front cover. The inside of the printer may be very hot, after you use the printer.*



1. Make sure that the printer is turned off.
2. Open the front cover by pulling the latches on each side of the front cover.



3. Remove the used imaging cartridge by pulling the handles on each side of the cartridge, and dispose of the used imaging cartridge properly.



**Warning:**

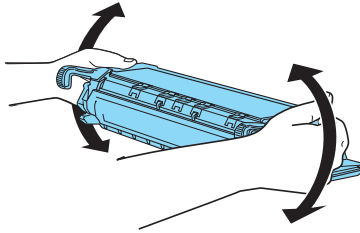
*Do not dispose of used imaging cartridges in fire, as they can explode and cause injury. Dispose of them according to local regulations.*



**Caution:**

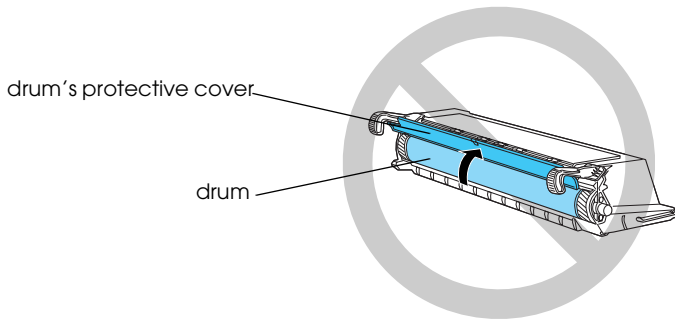
*Do not turn the imaging cartridge upside down and do not expose it to light any longer than necessary.*

4. While holding the new imaging cartridge horizontally, gently shake it a few times to distribute the toner evenly.



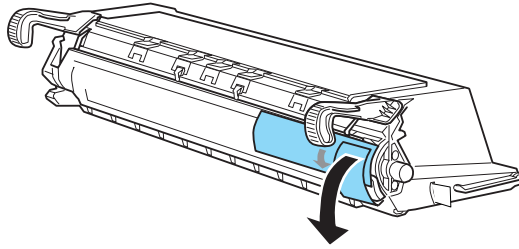
**Caution:**

- ❑ Do not open the drum's protective cover and avoid touching the drum inside the cartridge, or you may have printing quality problems.

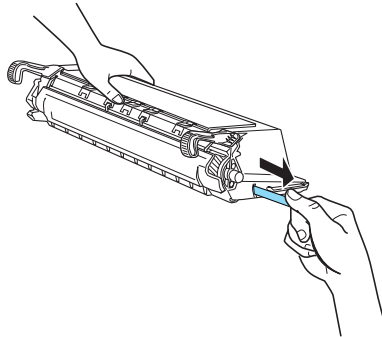


- ❑ Do not grasp the drum's protective cover.

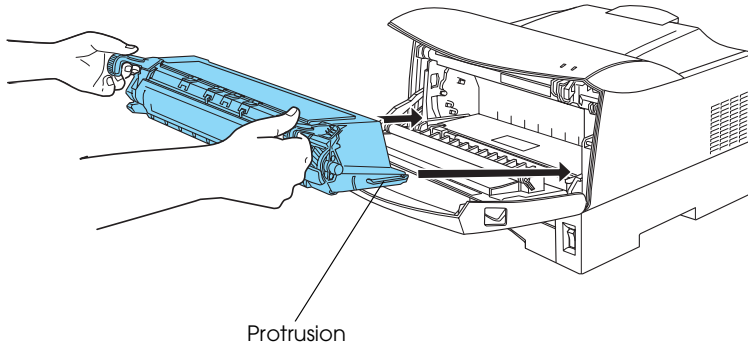
5. Peel off the tape and remove the protective sheet as shown below.



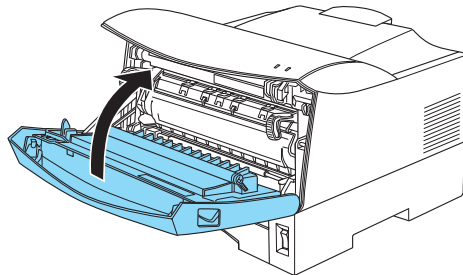
6. Set the imaging cartridge on a clean, flat surface. Pull the clear seal all the way out with firm, even pressure.



7. Grip the handles on each side of the imaging cartridge, and insert it to the end while positioning the protrusions on each side of the cartridge along the grooves.



8. Gently close the front cover until it clicks shut.



**Caution:**

*Never transport the printer with the imaging cartridge installed.*

## Chapter 7

---

# **Troubleshooting**

Ready and Error Lights . . . . .	119
Printing a Status Sheet . . . . .	120
Clearing paper jams . . . . .	122
Operational problems . . . . .	126
Printout problems . . . . .	128
Print quality problems . . . . .	130
Memory problems . . . . .	138
Problems using options . . . . .	139
Printer driver and utility problems . . . . .	140
Communication errors . . . . .	142

---

## Ready and Error Lights

The Ready (green) and Error (red) lights on the top of the printer may be the first indication of trouble. The status of the lights, on, off or flashing, indicates your printer status, as described below. The Status Alert window in the EPSON Status Monitor 3 utility indicates what type of error has occurred and offers you a possible solution. Look through this section to find the kind of problem you have, then try the recommended solutions in the order they are presented until your problem is solved.

Error Light (red)	Ready Light (green)	Printer Status
Off	Off	Off
Off	On	Ready for printing
Off	Flashing	Warming up or receiving data
Flashing	Off	Out of paper or easily cleared error
On	Flashing	
On	Off	Service required error Turn off the printer, wait for few minutes and then turn it back on. If this does not clear the error, contact your dealer or a qualified service person.
Flashing alternatively		

### **Note:**

*If the problem remains after trying the suggestions in this section, contact your dealer for assistance.*

---

## **Printing a Status Sheet**

To confirm the current status of the printer, print a status sheet from the printer driver. The status sheet contains information about the printer, the current settings, and the installed options, if any.

Follow the steps below to print a status sheet.

### **For Windows users**

1. Click Start, point to Settings and click Printers.
2. Right-click the EPSON EPL-1220 Advanced icon, and click Properties in the menu that appears.
3. Click the Optional Settings tab and then click Status Sheet. The printer starts printing a status sheet.

#### **Note:**

- ❑ *When you install a 4 MB or 8 MB SIMM, the total printer memory is the standard 2 MB plus the optional SIMM. However, even if you install an optional 16 MB or 32 MB SIMM, the total printer memory is increased to its maximum of 13 MB only.*
- ❑ *If information about the installed options is not listed on the status sheet, make sure that the options are installed correctly.*
- ❑ *If you cannot print a proper status sheet, contact your dealer.*



## **For Macintosh users**

1. Select Chooser from the Apple menu. Click the icon of your printer, and then select the USB port that your printer is connected to. Click Setup, and the EPSON Printer Setup dialog box appears.
2. Click Print Status, and the printer starts printing a status sheet.
3. Click OK and the dialog box will close.

### **Note:**

- ❑ *When you install a 4 MB or 8 MB SIMM, the total printer memory is the standard 2 MB plus the optional SIMM. However, even if you install an optional 16 MB or 32 MB SIMM, the total printer memory is increased to its maximum of 13 MB only.*
- ❑ *If information about the installed options is not listed on the status sheet, make sure that the options are installed correctly.*
- ❑ *If you cannot print a proper status sheet, contact your dealer.*

---

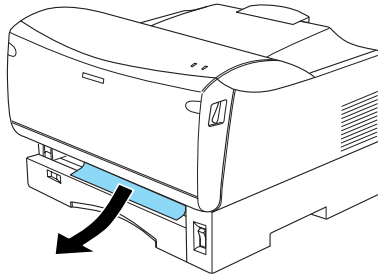
# Clearing paper jams

## Paper jams in the feeding area

Follow these steps to clear paper jams in the feeding area:

This section describes an example of how to clear jammed paper in the feeding area of the MP tray. Procedures for cleaning jammed paper are almost the same in any feeding area.

1. Remove the MP tray from the printer while lifting up the cassette.
2. When the paper is jammed in the cassette unit or the bottom of the printer, remove the paper as shown below.



3. Remove any folded paper from the MP tray, and discard any curled or wrinkled sheets.
4. Remove the cover of the MP tray and take the paper stack out. Tap the edge on a flat surface and reinsert it into the MP tray making sure the paper is evenly aligned and that the cartridge is not overloaded.

**Note:**

*Make sure that you are using the correct size of paper and set the paper size switch according to the paper size. Also make sure that you are using paper that meets the specifications for this printer.*

5. Reattach the cassette cover and reinsert the paper cassette into the printer.

The jammed page's print data is automatically reprinted.

### ***Paper jams inside of the printer or in the output area***

Follow these steps to clear paper jams inside of the printer or in the output area:

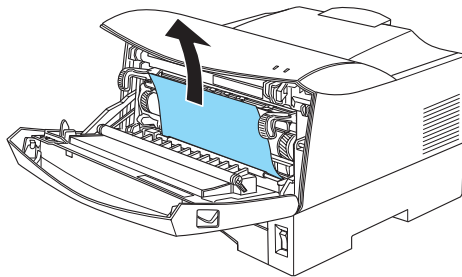


**Warning:**

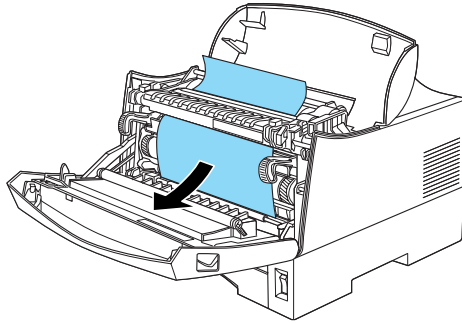
*Be careful not to touch the fuser, which is marked CAUTION Hot Surface Avoid Contact, or the surrounding areas. If the printer has been in use, the fuser and the surrounding areas may be very hot.*

1. Open the front cover and remove the jammed paper.

Be sure to pull the jammed paper in the direction as shown below.



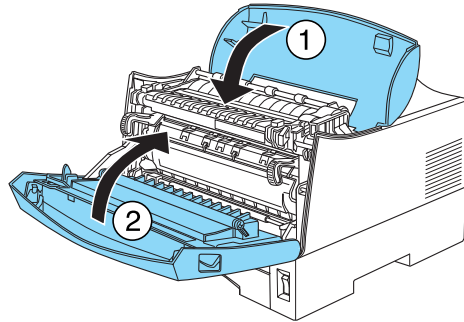
When the jammed paper is fed toward the output tray, open the top cover and make sure that the paper is not wrinkled there. Then pull the jammed paper in the direction as shown below.



**Caution:**

- ❑ *Do not force the jammed paper out, or you may have printing problems.*
- ❑ *When pieces of jammed paper are left deep in the printer, do not attempt to remove it yourself. Contact a qualified service representative.*

2. Close the top cover, and close the front cover.



**Caution:**

- ❑ Be sure to set the paper size switch according to the size of the loaded paper. Otherwise, paper jams may occur.
- ❑ If the problem persists even after performing the procedures above, remove the MP tray or paper cassettes from the printer and make sure that the paper is not jammed in the feeding area.

**Note:**

*Because the toner on the paper inside the printer may not have been fixed on the page, toner may come off on your hands when you remove the paper. If you spill toner on your clothing, rinse it off with cold water. Using hot water may leave a permanent stain.*

Make sure that the Ready light is on. The jammed page's print data is automatically reprinted.

---

## **Operational problems**

<b>The printer is making abnormal noise</b>	
<b>Cause</b>	<b>What to do</b>
Abnormal noise may come from the printer momentarily immediately after a new imaging cartridge is loaded. This does not indicate malfunction.	Remove the imaging cartridge from the printer, gently rock it back and forth two or three times, then reload it into the printer.

<b>The Ready light (green) does not turn on when you turn the printer on</b>	
<b>Cause</b>	<b>What to do</b>
The printer may not be connected to the electrical outlet.	Turn off the printer and check the power cord connection between the printer and the electrical outlet. Then turn the printer back on.  If the electrical outlet is controlled by an outside source such as a wall switch, make sure that the switch is turned on. Try plugging another electrical device into the outlet to check whether the outlet is operating properly.

<b>The Ready light is on but nothing prints</b>	
<b>Cause</b>	<b>What to do</b>
The interface cable may not be plugged in securely.	Check both ends of the cable between the printer and the computer. When connecting with the parallel interface cable, be sure to secure the connector using the wire retaining clips.
You may not be using the correct interface cable.	Make sure that you use a double-shielded, twisted-pair interface cable no longer than six feet in length, or USB Revision 1.1 compliant.
The imaging cartridge may be empty.	Replace the imaging cartridge. For details see “Replacing” on page 113.

---

## ***Printout problems***

<b>Some or all of the printout is garbled</b>	
<b>Cause</b>	<b>What to do</b>
The interface cable may not be plugged in securely.	Make sure that both ends of the interface cable are plugged in securely.
You may not be using the correct interface cable.	Make sure that you use a double-shielded, twisted-pair interface cable no longer than six feet in length, or USB Revision 1.1 compliant.

If the printer still does not print correctly, contact your dealer or a qualified service representative.

<b>Position of the printout is not correct</b>	
<b>Cause</b>	<b>What to do</b>
The page length and margins are set incorrectly in your application software.	Make sure that you are using the correct page length and margin settings in your software program.



<b>Graphics don't print correctly</b>	
<b>Cause</b>	<b>What to do</b>
You may need more memory.	Graphics require large amounts of memory; see "Memory problems" on page 138 for more information.

<b>Light color is not printed</b>	
<b>Cause</b>	<b>What to do</b>
The color in your document may be too light.	If colored areas or light-colored text or graphics are not printed, try changing the selected color or print at 300 dpi resolution.

---

## ***Print quality problems***

<b>The background is dark or dirty</b>	
<b>Cause</b>	<b>What to do</b>
The setting of Density or Adjust intensity may be dark.	Lighten Density in the printer driver of Windows or Adjust intensity in the printer driver of Macintosh.
The paper path inside the printer may be dusty.	Turn off the printer. Clean the paper path inside the printer using well-wrung cloth. Clean the internal printer components by printing three pages with only one character per page.
You may not be using the correct type of paper for your printer.	If the surface of your paper is too rough, printed characters may appear distorted or broken. Smooth, high-quality copier paper is recommended for best results. See "Specifications" on page 153 for information on choosing paper.
There may be a problem with the imaging cartridge.	Remove the cartridge, shake it gently from side to side, and then reinstall it. If this does not solve the problem, replace the imaging cartridge. For more information, see "Replacing" on page 113.

<b>Black or white bands appear in the printout</b>	
<b>Cause</b>	<b>What to do</b>
The paper path inside the printer may be dusty.	Turn off the printer. Clean the paper path inside the printer using a well-wrung cloth. Clean the internal printer components by printing three pages with only one character per page.
There may be a problem with the imaging cartridge.	Remove the cartridge, shake it gently from side to side, and then reinstall it. If this does not solve the problem, replace the imaging cartridge. For more information, see “Replacing” on page 113.

<b>Uneven image density</b>	
<b>Cause</b>	<b>What to do</b>
Your paper may be moist or damp.	Do not store your paper in a humid or damp environment.
You may not be using the correct type of paper for your printer.	Make sure that the paper type is correct.
The Toner Save mode may be turned on.	Make sure that the Toner Save mode is turned off.
The setting of Density or Adjust intensity may be incorrect.	Confirm that the setting of Density in the printer driver of Windows or Adjust intensity in the printer driver of Macintosh is correct.
There may be a problem with the imaging cartridge.	Turn off the printer. Take out the imaging cartridge, shake it gently from side to side, and then reinstall it.

If this does not solve the problem, install a new cartridge. For more information, see “Replacing” on page 113. Then print several pages to check the print quality.

<b>Toner smudges</b>	
<b>Cause</b>	<b>What to do</b>
Your paper may be moist or damp.	Do not store your paper in a humid or damp environment.
You may not be using the correct type of paper for your printer.	If the surface of your paper is too rough, printed characters may appear distorted or broken. Smooth, high-quality copier paper is recommended for best results. See “Specifications” on page 153 for more information on choosing paper.
The paper path inside the printer may be dusty.	Turn off the printer. Clean the internal printer components by printing three pages with only one character per page.
There may be a problem with the imaging cartridge.	Turn off the printer. Remove the imaging cartridge, shake it from side to side to distribute the toner, and wipe the bottom of it with a well-wrung cloth.

If the problem remains, replace the imaging cartridge. For more information, see “Replacing” on page 113.

<b>Missing areas on printed image</b>	
<b>Cause</b>	<b>What to do</b>
Your paper may be moist or damp.	Printing is sensitive to moisture absorbed by the paper. The higher the moisture content in the paper, the lighter the printed output. Do not store paper in a humid or damp environment.
You may not be using the correct type of paper for your printer.	If the surface of your paper is too rough, printed characters may appear distorted or broken. Smooth, high-quality copier paper is recommended for best results. See "Specifications" on page 153 for more information on choosing paper.

<b>Completely blank pages</b>	
<b>Cause</b>	<b>What to do</b>
There may be no toner in the imaging cartridge.	If the toner status in the EPSON Status Monitor 3 utility indicates that the amount of toner is low, see Chapter 6, "Replacing the Imaging Cartridge," for information on replacing the imaging cartridge.
The imaging cartridge is not installed correctly.	Check that the imaging cartridge is installed as described under "Replacing" on page 113.
The problem may be with your software program or interface cable.	Print a status sheet from the printer driver. If blank pages continue to print, the problem may be with the printer. Turn off the printer and contact your dealer.

<b>The printed image is light or faint</b>	
<b>Cause</b>	<b>What to do</b>
Your paper may be moist or damp.	The higher the moisture content in the paper, the lighter the printed output. Do not store paper in a humid or damp environment.
The Toner Save mode may be turned on.	Turn off the Toner Save mode using the printer driver.
The setting of Density or Adjust intensity may be light.	Confirm that Density in the printer driver of Windows or Adjust intensity in the printer driver of Macintosh is set properly.
There may be a problem with the imaging cartridge.	Take out the imaging cartridge, shake it gently from side to side to distribute the toner, and then reinstall it. If the problem persists, replace the cartridge. For more information, see "Replacing" on page 113.



<b>The image is too dark</b>	
<b>Cause</b>	<b>What to do</b>
The setting of Density or Adjust intensity may be dark.	Confirm that Density in the printer driver of Windows or Adjust intensity in the printer driver of Macintosh is set properly.
There may be a problem with the imaging cartridge.	If the problem persists, replace the imaging cartridge. For more information, see "Replacing" on page 113.

<b>Non-printed side of the page is dirty</b>	
<b>Cause</b>	<b>What to do</b>
Toner may have spilled onto the paper feed path.	Turn off the printer. Remove the imaging cartridge and then clean the paper path of the printer using a well-wrung cloth.



**Warning:**

*Be careful not to touch the fuser, which is marked CAUTION Hot Surface Avoid Contact, or the surrounding areas. If the printer has been in use, the fuser and the surrounding areas may be very hot.*

---

## Memory problems

<b>Insufficient memory for current task</b>	
<b>Cause</b>	<b>What to do</b>
Printing stops due to a lack of memory.	Turn the printer off and back on again. If your computer cannot be connected in ECP mode, the printer may not be able to print with the standard memory. For information on installing more memory, see "Memory Module" on page 106.  However, it may be necessary to reduce the contents of print jobs.
The printer cannot print in the required quality level because of insufficient memory, and the printer lowers the quality automatically so that the printer can continue printing.	Check to see if the printout is acceptable. If not, add more memory for a permanent solution or set Print Quality to 300 dpi and clear the Avoid Page Error check box temporarily in the printer driver.

<b>Insufficient memory to print all copies</b>	
<b>Cause</b>	<b>What to do</b>
The printer does not have sufficient memory to collate print jobs.	Only one set of copies will be printed. Reduce the contents of print jobs, or add more memory. For information on installing more memory, see "Memory Module" on page 106.

---

## **Problems using options**

<b>Paper does not feed from the optional 250-sheet lower paper cassette</b>	
<b>Cause</b>	<b>What to do</b>
The paper source setting may not be correct.	Be sure you have selected the correct paper source in your software.
There may be no paper left in the paper cassette.	Load it with paper.
Too many sheets may be loaded in the paper cassette.	Be sure that the optional 250-Sheet Lower Paper Cassette Unit is properly installed and that you have not tried to load it with too many sheets of paper. The cassette can hold a maximum of 250 sheets of 64 g/m <sup>2</sup> (17 lb) paper.
The optional 250-Sheet Lower Paper Cassette Unit may not be installed properly.	See "Installing" on page 103 for instructions on installing an optional 250-Sheet Lower Paper Cassette Unit.

<b>Feed jam when using an optional 250-Sheet Lower Paper Cassette Unit</b>	
<b>Cause</b>	<b>What to do</b>
The paper is jammed at the optional paper cassette.	See "Paper jams in the feeding area" on page 122.

---

## ***Printer driver and utility problems***

<b>The status information does not match the real status of the printer</b>	
<b>Cause</b>	<b>What to do</b>
EPSON Status Monitor 3 has not started yet to monitor the current job.	You need to wait until EPSON Status Monitor 3 monitors the printer again, and automatically updates the status.

<b>Cannot install the printer driver in Windows</b>	
<b>Cause</b>	<b>What to do</b>
If your computer is not Windows 98 pre-installed, it is an upgrade from Windows 95 to 98. It may not support USB connectors, and may not print.	Confirm whether your computer supports USB connectors by calling the manufacturer.

### **The printer driver is installed as an “unknown device” in Device Manager of Windows**

<b>Cause</b>	<b>What to do</b>
Some problem may have disrupted the plug-and-play installation of the printer driver.	When the printer is turned on and connected to the computer through a USB cable, right-click the My Computer icon and choose Properties. Click the Device Manager tab and check if USB printer or EPL-1220 appears under unknown device. If it does, disconnect the USB cable from the printer, reconnect it, and reinstall the printer driver.

### **Cannot print from Windows**

<b>Cause</b>	<b>What to do</b>
The printer port setting may be incorrect.	Confirm that the correct printer port is chosen in the Details tab of the printer driver's Properties dialog box.

<b>Your printer is not displayed in the Printers folder</b>	
<b>Cause</b>	<b>What to do</b>
The computer does not recognize the printer connection.	Make sure that the printer's power is on. If you are using the USB interface and your printer does not appear in the Printers folder, try disconnecting and then reconnecting the USB cable. If this does not resolve the problem, try reinstalling the printer driver.

---

## ***Communication errors***

<b>Communication errors occur</b>	
<b>Cause</b>	<b>What to do</b>
The printer may be initializing itself or running a self-test.	You need to wait until the printer completes the initializing process.

<b>Windows shared printers cannot be monitored</b>	
<b>Cause</b>	<b>What to do</b>
<p>The setting of the EPSON Status Monitor 3 may be incorrect. Monitoring of shared printers is set internally by the EPSON Status Monitor 3 utility.</p>	<p>To monitor Windows shared printers, right-click Network Neighborhood and then click Properties. Confirm that File and printer sharing for Microsoft Networks is shown in the list of installed components.</p> <p>And also, confirm that EPSON Status Monitor 3 is installed in the computer or server that is connected to the shared printer, and make sure that the Allow monitoring of shared printers check box is selected in the Monitoring Preferences dialog box.</p>
<p>In Windows Me, 98, and 95, IPX/SPX compatible protocols may be set on the network module.</p>	<p>Disable the IPX/SPX compatible protocols on the network module.</p>

<b>Although connected to the USB hub, the printer does not operate correctly</b>	
<b>Cause</b>	<b>What to do</b>
The printer may not be connected to the first level USB hub.	There are five levels of USB connectors. Make sure that your printer is connected to the first level.
The computer may not recognize the USB hub correctly.	Make sure that the computer has correctly recognized the USB hub. Also, check that the USB hub is under the universal serial bus in the device manager.



## Chapter 8

---

# ***Cleaning and Transporting the Printer***

Cleaning the Printer . . . . .	146
Cleaning the inside of the printer . . . . .	146
Removing spilled toner . . . . .	148
Cleaning the printer case . . . . .	149
Cleaning the paper roller . . . . .	150
Transporting the Printer . . . . .	151

---

## ***Cleaning the Printer***

The printer needs only minimal cleaning. If you notice a decline in print quality, clean the inside of the printer as described in this section.

You should also clean the paper cassette and the printer cover every few months. These procedures are described later in this section.

### ***Cleaning the inside of the printer***

Fine particles of dust can collect inside the printer. Follow these steps to clean the inside of the printer and the paper feeder:

1. Make sure of the printer is turned off.
2. Open the front cover.

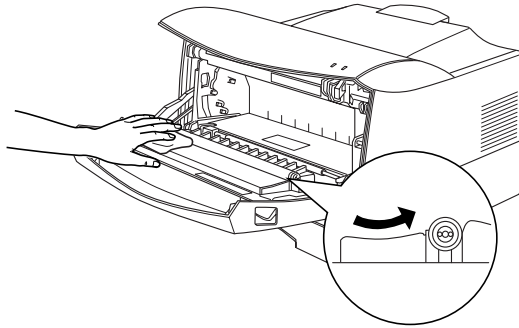


***Warning:***

*Be careful not to touch the fuser, which is marked CAUTION Hot Surface Avoid Contact, or the surrounding areas. If the printer has been in use, the fuser and the surrounding areas may be very hot.*

3. Remove the imaging cartridge from the printer.

4. Remove any dirt inside the printer with a well-wrung cloth. Do not use compressed air.



**Caution:**  
*Be sure to avoid touching the print roller.*

5. Reinstall the imaging cartridge.
6. Close the front cover.

## ***Removing spilled toner***

If toner spills inside the printer, do not use the printer until you remove all the spilled toner.

If only a small amount of toner is present, carefully wipe out the inside of the printer with a well-wrung cloth.

If a large amount of toner is present, use a small vacuum cleaner (available from computer supply stores) to remove it. Then carefully wipe with a well-wrung cloth.



***Caution:***

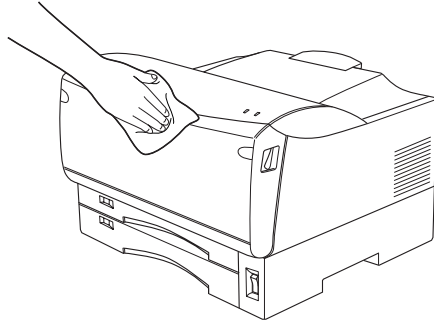
*Toner and other fine powders can damage some vacuum cleaners. Be sure to read the instructions for your vacuum cleaner before you use it on spilled toner.*

***Note:***

*If you spill toner on your clothing, rinse it off with cold water. Do not use hot water as it may cause the toner to leave a permanent stain.*

## ***Cleaning the printer case***

If the printer's outer case is dirty or dusty, turn off the printer and clean it with a well-wrung cloth.



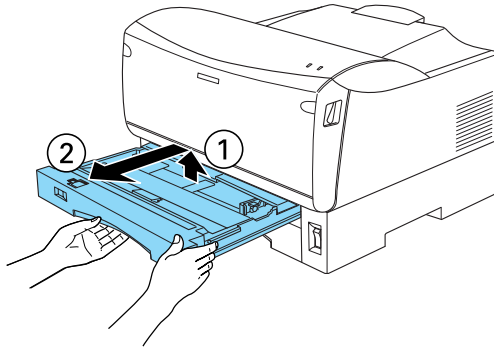
### ***Caution:***

*Never use alcohol or thinner to clean the printer cover; these chemicals can damage the components and the case. Be careful not to get water on the printer mechanism or any electronic components.*

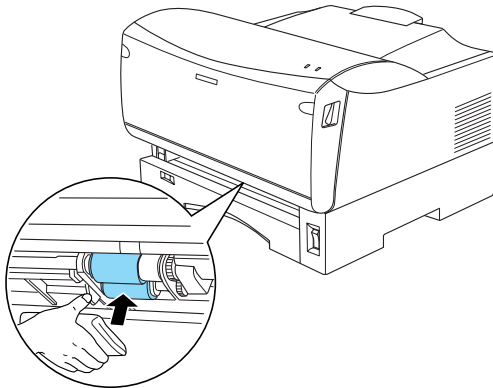
## ***Cleaning the paper roller***

Follow these steps to clean the paper roller:

1. Make sure of the printer is turned off.
2. Remove the appropriate paper cassette from the printer while lifting up the cassette slightly.



3. Gently wipe the two paper rollers inside of the cassette unit with a well-wrung cloth.



4. Reinsert the cassette in the printer.

---

## ***Transporting the Printer***

If you need to transport your printer, carefully repack it using its original box and packing materials.

Follow these steps to repack the printer:

1. Turn off the printer.
2. Open the front cover and remove the imaging cartridge.



***Caution:***

*Do not expose the imaging cartridge to light any longer than necessary.*

3. Remove all paper from the MP tray and all paper cassettes.
4. Unplug the power cord from the electrical outlet; then disconnect the interface cable from the printer.
5. Remove the optional lower paper cassette unit, if installed.
6. Repack the printer in its original box using the protective materials that came with it.

## Appendix A

---

# Technical Specifications

Paper .....	153
Specifications .....	153
Printable area .....	154
Printer .....	155
General .....	155
Environmental .....	156
Mechanical .....	157
Electrical .....	157
Interface .....	158
Parallel interface .....	158
USB interface .....	158
Options and Consumables .....	159
250-Sheet Lower Paper Cassette Unit A3 Universal .....	159
Memory Module .....	160
Imaging Cartridge (S051079) .....	160



---

# Paper

## Specifications

Since the quality of any particular brand or type of paper may be changed by the manufacturer at any time, EPSON cannot guarantee the quality of any paper. Always test samples of paper stock before purchasing large quantities or printing large jobs.

Paper Types: Plain paper, recycled paper, labels, envelopes, transparencies, colored paper, thick paper, letterhead

**Note:**

*Use recycled paper under normal temperature and humidity conditions only. Poor quality paper may reduce print quality, cause paper jams and other problems.*

Paper weight:

Plain paper: 64 to 81.4 g/m<sup>2</sup>, 17 to 21.7 lb\*

Thick paper: 81.4 to 128 g/m<sup>2</sup>, 21.7 to 34.1 lb\*

\* lb: Ream Weight (lb/500 sheets/17 in. × 22 in.)

Paper size:

- Paper:
- A3 (297 × 420 mm)
  - B4 (257 × 364 mm)
  - A4 (210 × 297 mm)
  - A5 (148 × 210 mm)
  - B5 (182 × 257 mm)
  - Letter (216 × 279 mm, 8.5 × 11 in.)
  - Half-Letter (140 × 216 mm, 5.5 × 8.5 in.)
  - Legal (216 × 356 mm, 8.5 × 14 in.)
  - Government Letter (203 × 267 mm, 8 × 10.5 in.)
  - Government legal (216 × 330 mm, 8.5 × 13 in.)
  - Executive (184 × 267 mm, 7.25 × 10.5 in.)
  - F4 (210 × 330 mm)
  - Custom (100 to 297 mm × 148 to 420 mm)
- Envelopes:
- Commercial 10 (105 × 241 mm, 4 1/8 × 9 1/2 in.)
  - DL (110 × 220 mm)
  - C6 (162 × 114 mm)
  - C5 (162 × 229 mm)
  - International B5 (176 × 250 mm, 7 × 9.8 in.)



**Caution:**

*Only load paper of the sizes listed above.*

## **Printable area**

5-mm minimum margin on all sides

---

# Printer

## General

Printing method:	Laser beam scanning and dry electrophotographic process
Resolution:	600 dpi
Printing speed:	Up to 12 pages per minute with A4 paper, depending on the font and data quantity
First print:	MP tray: Less than 12 seconds with A4 paper/Less than 12.2 seconds with Letter paper Standard lower cassette: Less than 12 seconds with A4 paper/Less than 12.2 seconds with Letter paper
First print (standby mode):	MP tray: Less than 25 seconds with A4 paper/Less than 25.2 seconds with Letter paper Standard Lower cassette: Less than 25 seconds with A4 paper/Less than 25.2 seconds with Letter paper
Paper feed:	Automatic
Paper feed alignment:	Center alignment for all sizes

Input paper supply  
(64 g/m<sup>2</sup> paper):

MP tray: Up to 100 sheets of plain paper  
Up to 10 envelopes, depending on  
thickness

Standard lower  
cassette: Up to 250 sheets of plain paper

Optional lower  
paper cassette unit: Up to 250 sheets of plain paper in the  
250-Sheet Lower Paper Cassette Unit

Paper output: Face-down

Paper output capacity  
(64 g/m<sup>2</sup> paper): Up to 250 sheets of plain paper

RAM: 2 MB, expandable up to 13 MB

## ***Environmental***

Temperature: Operation: 5 to 35°C (41 to 95°F)  
Storage: 0 to 35°C (32 to 95°F)

Humidity: Operation: 15 to 85% RH  
Storage: 15 to 80% RH

Altitude: 2,500 meters (8,200 feet) maximum

## **Mechanical**

Dimensions and weight:	Height:	325 mm (12.8 in.)
	Width:	459 mm (18.1 in.)
	Depth:	449 mm (17.7 in.)
	Weight:	Approx. 17 kg (37.5 lb), excluding the imaging cartridge
Durability:	5 years or 300,000 sheets, whichever comes first	

## **Electrical**

Voltage	198 V to 264 V
Rated frequency	50 Hz to 60 Hz $\pm$ 3 Hz
Rated current	4 A
Power consumption	Less than 840 W
Power consumption in standby mode	Less than 15 W

**Note:**

*Check the label on the back of the printer for the voltage of your printer.*

---

## ***Interface***

### ***Parallel interface***

Use only an IEEE 1284 compliant parallel.

### ***USB interface***

USB Revision 1.1 compliant.

---

## ***Options and Consumables***

### ***250-Sheet Lower Paper Cassette Unit A3 Universal***

Paper size:	A3, A5, B4, A4, B5, Letter
Paper weight:	64 to 81.4 g/m <sup>2</sup> (17 to 21.7 lb)
Paper feed:	Automatic feed delivery system Cassette capacity up to 250 sheets (64 g/m <sup>2</sup> or 17 lb paper)
Feeding speed:	12 seconds for the first sheet of A4 paper 12.2 seconds for the first sheet of Letter paper 12 pages per minute for subsequent sheets of A4 paper 11.5 pages per minute for subsequent sheet of Letter paper
Paper type:	Plain paper, such as copier paper, and recycled paper
Power supply:	DC 5V supplied by the printer
Dimensions and weight:	
Height:	109 mm (4.3 in.)
Width:	459 mm (18.1 in.)
Depth:	379 mm (14.9 in.)
Weight:	4.6 kg (10.1 lb)

## Memory Module

Memory size:	4 MB, 8 MB, 16 MB, or 32 MB
Type:	72-pin, EDO mode type
Access speed:	60 ns or less
Measurements:	Dimensions within 108 mm (4.25 in.) × 26 mm (1.02 in.), with a thickness of 10 mm (0.4 in.)

## Imaging Cartridge (S051079)

### Storage

temperature:	0 to 35°C (32 to 95°F)
Storage humidity:	15 to 80% RH
Shelf life:	24 months after production
Life:	Up to 10,000 pages under the following conditions: Letter or A4 paper, continuous printing, and 5% print ratio
Maximum printable pages:	Up to 3,000 pages after the Toner low error appears under the following conditions: Letter or A4 paper, continuous printing, and less than 5% print ratio

The number of pages you can print with an imaging cartridge varies depending on the type of printing. If you print a few pages at a time or print dense text exceeding the 5% print ratio, the unit may print fewer pages. The 5% print ratio is equivalent to printing double-spaced standard text.



---

**Work with Fonts**

EPSON BarCode Fonts .....162  
    System requirements .....164  
    Installing EPSON BarCode Fonts .....164  
    Printing with EPSON BarCode Fonts .....166  
    EPSON BarCode Font specifications .....169

---

## **EPSON BarCode Fonts**

EPSON BarCode Fonts let you easily create and print many types of bar codes.

Normally, bar code creation is a laborious process requiring you to specify various command codes, such as Start bar, Stop bar and OCR-B, in addition to the bar code characters themselves.

However, EPSON BarCode Fonts are designed to add such codes automatically, allowing you to easily print bar codes that conform to a variety of bar code standards.

EPSON BarCode Fonts support the following types of bar codes:

<b>Bar code Standard</b>	<b>EPSON BarCode</b>	<b>OCR-B</b>	<b>Check Digit</b>	<b>Comments</b>
EAN	EPSON EAN-8	Yes	Yes	Creates EAN (abbreviated version) bar codes.
	EPSON EAN-13	Yes	Yes	Creates EAN (standard version) bar codes.
UPC-A	EPSON UPC-A	Yes	Yes	Creates UPC-A bar codes.
UPC-E	EPSON UPC-E	Yes	Yes	Creates UPC-E bar codes.

<b>Bar code Standard</b>	<b>EPSON BarCode</b>	<b>OCR-B</b>	<b>Check Digit</b>	<b>Comments</b>
Code39	EPSON Code39	No	No	Printing of OCR-B and check digits can be specified with the font name.
	EPSON Code39 CD	No	Yes	
	EPSON Code39 CD Num	Yes	Yes	
	EPSON Code39 Num	Yes	No	
Code128	EPSON Code128	No	Yes	Creates Code128 bar codes.
Interleaved 2 of 5 (ITF)	EPSON ITF	No	No	Printing of OCR-B and check digits can be specified with the font name.
	EPSON ITF CD	No	Yes	
	EPSON ITF CD Num	Yes	Yes	
	EPSON ITF Num	Yes	No	
Codabar	EPSON Codabar	No	No	Printing of OCR-B and check digits can be specified with the font name.
	EPSON Codabar CD	No	Yes	
	EPSON Codabar CD Num	Yes	Yes	
	EPSON Codabar Num	Yes	No	

## **System requirements**

To use EPSON BarCode Fonts, your computer system should meet the following requirements:

- Computer: IBM PC series or IBM compatible with an i386SX or higher CPU
- Operating system: Microsoft Windows 2000, Windows Me/98/95, Windows NT 4.0
- Hard disk: 15 to 30 KB free space, depending on the font.

**Note:**

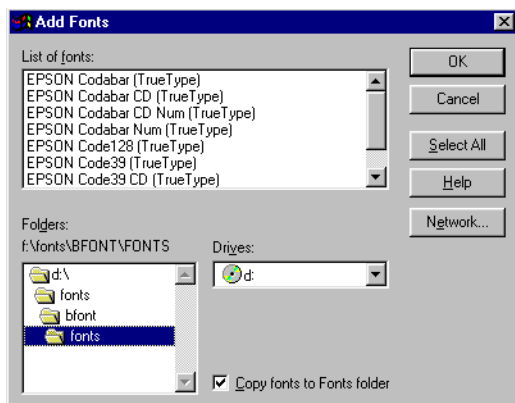
*EPSON BarCode Fonts can only be used with EPSON printer drivers.*

## **Installing EPSON BarCode Fonts**

Follow these steps to install EPSON BarCode Fonts. The procedure described here is for installation in Windows 95/98/Me; the procedure for other Windows operating systems is nearly the same.

1. Turn on the computer and start Windows.
2. Insert the CD-ROM or floppy disk containing the EPSON BarCode Fonts in the appropriate drive.
3. Click Start, point to Settings, then click Control Panel.
4. Double-click Fonts.

5. From the File menu, select Install New Font.



6. Select the appropriate CD-ROM or floppy drive, then select the BarCode Fonts folder from the Folders list.
7. In the List of fonts box, select the BarCode Font you want to install, or click the Select All button to install all EPSON BarCode Fonts.

**Note:**

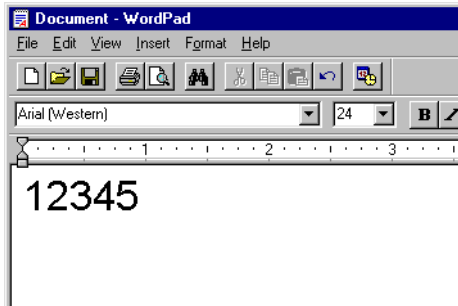
*Make sure that the Copy fonts to Fonts folder check box is selected.*

8. Click OK. The selected EPSON BarCode Fonts are installed in the Windows Fonts folder.

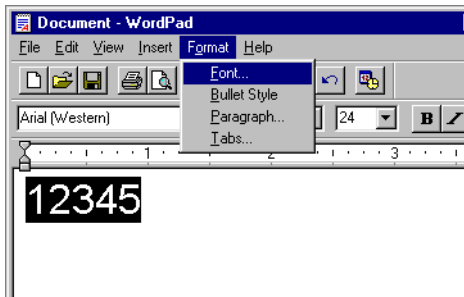
## Printing with EPSON BarCode Fonts

Follow these steps to create and print bar codes using EPSON BarCode Fonts. The application featured in these instructions is Microsoft WordPad. The actual procedure may differ slightly when printing from other applications.

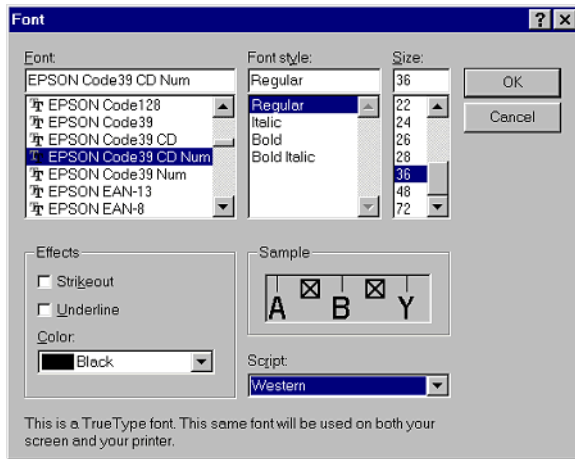
1. Open a document in your application and type the characters you want to convert into a bar code.



2. Select the characters, then select Font from the Format menu.



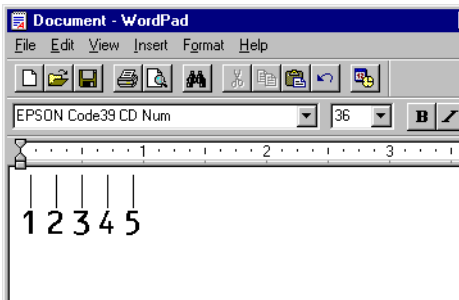
3. Select the EPSON BarCode Font you want to use, then set the font size and click OK.



**Note:**

*In Windows 2000/NT 4.0, you cannot use font sizes larger than 96 points when printing bar codes.*

4. The characters you selected appear as bar codes similar to those shown below.



5. Select Print from the File menu, then select your EPSON printer and click Properties. Make the following printer driver settings.

	<b>Monochrome Printer Driver</b>
Color	(not available)
Print Quality	600 dpi
Toner Save	Not selected
Zoom Options	Not selected
Graphic Mode (in the Extended Settings dialog box accessed through the Optional Settings tab)	(not available)
Printing Mode (in the Mode Settings dialog box accessed through the Basic Settings tab)	(not available)

6. Click OK to print the bar code.

**Note:**

*If there is an error in the bar code character string, such as inappropriate data, the bar code will be printed as it appears on the screen, but it cannot be read by a bar code reader.*

### **Notes on inputting and formatting bar codes**

Please note the following when inputting and formatting bar code characters:

- Do not apply shading or special character formatting, such as bold, italic, or underline.
- Print bar codes in black and white only.
- When rotating characters, only specify rotation angles of 90°, 180° and 270°.
- Turn off all automatic character and word spacing settings in your application.



- ❑ Do not use features in your application which enlarge or reduce the size of characters in only the vertical or horizontal direction.
- ❑ Turn off your application's auto-correct features for spelling, grammar, spacing, etc.
- ❑ To more easily distinguish bar codes from other text in your document, set your application to show text symbols, such as paragraph marks, tabs, etc.
- ❑ Because special characters such as Start bar and Stop bar are added when an EPSON BarCode Font is selected, the resulting bar code may have more characters than were originally input.
- ❑ For best results, use only the font sizes recommended in "EPSON BarCode Font specifications" on page 169 for the EPSON BarCode Font you are using. Bar codes in other sizes may not be readable with all bar code readers.

**Note:**

*Depending on the print density, or on the quality or color of the paper, bar codes may not be readable with all bar code readers. Print a sample and make sure that the bar code can be read before printing large quantities.*

## **EPSON BarCode Font specifications**

This section contains details on the character input specifications for each EPSON BarCode Font.

### **EPSON EAN-8**

- ❑ EAN-8 is an eight-digit abbreviated version of the EAN bar code standard.

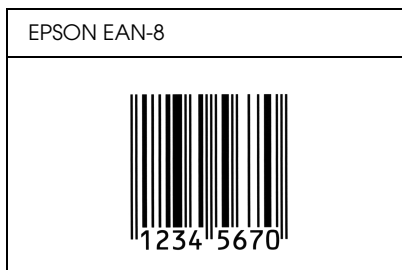
- Because the check digit is added automatically, only 7 characters can be input.

Character type	Numbers (0 to 9)
Number of characters	Up to 7 characters
Font size	52 pt to 130 pt (up to 96 pt in Windows 2000/NT). Recommended sizes are 52 pt, 65 pt (standard), 97.5 pt and 130 pt.

The following codes are inserted automatically and need not be input by hand:

- Left/Right margin
- Left/Right guard bar
- Center bar
- Check digit
- OCR-B

Print Sample



## EPSON EAN-13

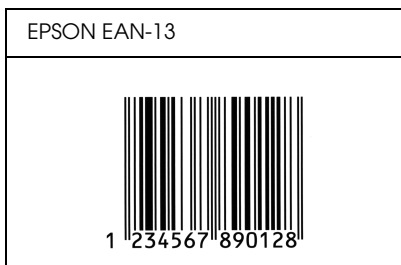
- EAN-13 is the standard 13-digit EAN bar code.
- Because the check digit is added automatically, only 12 characters can be input.

Character type	Numbers (0 to 9)
Number of characters	Up to 12 characters
Font size	60 pt to 150 pt (up to 96 pt in Windows 2000/NT). Recommended sizes are 60 pt, 75 pt (standard), 112.5 pt and 150 pt.

The following codes are inserted automatically and need not be input by hand:

- Left/Right margin
- Left/Right guard bar
- Center bar
- Check digit
- OCR-B

Print Sample



## EPSON UPC-A

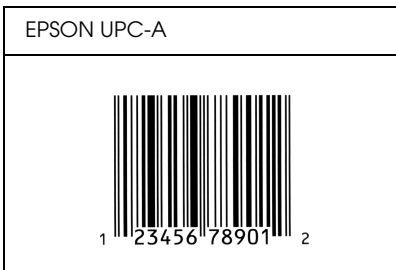
- UPC-A is the UPC-A standard bar code specified by the American Universal Product Code (UPC Symbol Specification Manual).
- Only regular UPC codes are supported. Supplementary codes are not supported.

Character type	Numbers (0 to 9)
Number of characters	Up to 11 characters
Font size	60 pt to 150 pt (up to 96 pt in Windows 2000/NT). Recommended sizes are 60 pt, 75 pt (standard), 112.5 pt and 150 pt.

The following codes are inserted automatically and need not be input by hand:

- Left/Right margin
- Left/Right guard bar
- Center bar
- Check digit
- OCR-B

Print Sample



## EPSON UPC-E

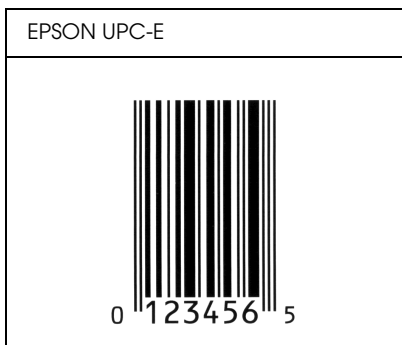
- UPC-E is the UPC-A zero-suppression (deletes extra zeros) bar code specified by the American Universal Product Code (UPC Symbol Specification Manual).

Character type	Numbers (0 to 9)
Number of characters	Up to 6 characters
Font size	60 pt to 150 pt (up to 96 pt in Windows 2000/NT). Recommended sizes are 60 pt, 75 pt (standard), 112.5 pt and 150 pt.

The following codes are inserted automatically and need not be input by hand:

- Left/Right margin
- Left/Right guard bar
- Check digit
- OCR-B
- The numeral "0"

Print Sample



## EPSON Code39





- ❑ Four Code39 fonts are available, allowing you to enable and disable the automatic insertion of check digits and OCR-B.
- ❑ The height of the bar code is automatically adjusted to 15% or more of its total length, in conformance to the Code39 standard. For this reason, it is important to keep at least one space between the bar code and the surrounding text to prevent overlapping.
- ❑ Spaces in Code39 bar codes should be input as “\_” underbars.
- ❑ When printing two or more bar codes on one line, separate the bar codes with a tab, or select a font other than a BarCode Font and input the space. If a space is input while a Code39 font is selected, the bar code will not be correct.

Character type	Alphanumeric characters (A to Z, 0 to 9) Symbols (- . space \$ / + %)
Number of characters	No limit
Font size	When OCR-B is not used: 26 pt or more (up to 96 pt in Windows 2000/NT). Recommended sizes are 26 pt, 52 pt, 78 pt and 104 pt.  When OCR-B is used: 36 pt or more (up to 96 pt in Windows 2000/NT). Recommended sizes are 36 pt, 72 pt, 108 pt and 144 pt.

The following codes are inserted automatically and need not be input by hand:

- ❑ Left/Right quiet zone
- ❑ Check digit
- ❑ Start/Stop character

## Print Sample

EPSON Code39	EPSON Code39 CD
	
EPSON Code39 Num	EPSON Code39 CD Num
 1 2 3 4 5 6 7	 1 2 3 4 5 6 7 8

## EPSON Code128

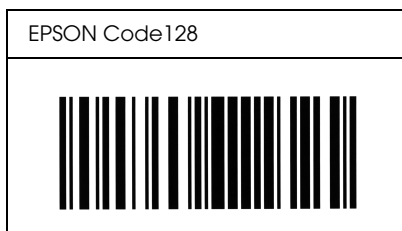
- ❑ Code128 fonts support code sets A, B, and C. When the code set of a line of characters is changed in the middle of the line, a conversion code is automatically inserted.
- ❑ The height of the bar code is automatically adjusted to 15% or more of its total length, in conformance to the Code128 standard. For this reason, it is important to keep at least one space between the bar code and the surrounding text to prevent overlapping.
- ❑ Some application software automatically deletes the spaces at the end of lines or changes multiple spaces into tabs. Bar codes containing spaces may not be correctly printed from applications that automatically delete spaces from the ends of lines or change multiple spaces into tabs.
- ❑ When printing two or more bar codes on one line, separate the bar codes with a tab, or select a font other than a BarCode Font and input the space. If a space is input while Code128 is selected, the bar code will not be correct.

Character type	All ASCII characters (95 in total)
Number of characters	No limit
Font size	26 pt to 104 pt (up to 96 pt in Windows 2000/NT). Recommended sizes are 26 pt, 52 pt, 78 pt and 104 pt.

The following codes are inserted automatically and need not be input by hand:

- Left/Right quiet zone
- Start/Stop character
- Check digit
- Change code set character

Print Sample





## EPSON ITF

- ❑ The EPSON ITF fonts conform to the USS Interleaved 2-of-5 standard (American).
- ❑ Four EPSON ITF fonts are available, allowing you to enable and disable the automatic insertion of check digits and OCR-B.
- ❑ The height of the bar code is automatically adjusted to 15% or more of its total length, in conformance to the Interleaved 2-of-5 standard. For this reason, it is important to keep at least one space between the bar code and the surrounding text to prevent overlapping.
- ❑ Interleaved 2 of 5 treats every two characters as one set. When there are an odd number of characters, EPSON ITF fonts automatically add a zero to the beginning of the character string.

Character type	Numbers (0 to 9)
Number of characters	No limit
Font size	When OCR-B is not used: 26 pt or more (up to 96 pt in Windows 2000/NT). Recommended sizes are 26 pt, 52 pt, 78 pt and 104 pt. When OCR-B is used: 36 pt or more (up to 96 pt in Windows 2000/NT). Recommended sizes are 36 pt, 72 pt, 108 pt and 144 pt.

The following codes are inserted automatically and need not be input by hand:

- ❑ Left/Right quiet zone
- ❑ Start/Stop character
- ❑ Check digit

- ❑ The numeral “0” (added to the beginning of character strings as needed)

Print Sample

EPSON ITF	EPSON ITF CD
	
EPSON ITF Num	EPSON ITF CD Num
 0 1 2 3 4 5 6 7	 1 2 3 4 5 6 7 0

## EPSON Codabar

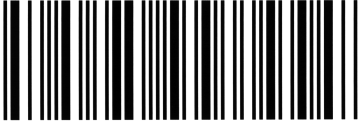


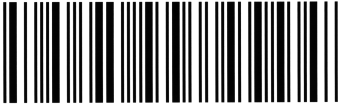
- ❑ Four Codabar fonts are available, allowing you to enable and disable the automatic insertion of check digits and OCR-B.
- ❑ The height of the bar code is automatically adjusted to 15% or more of its total length, in conformance to the Codabar standard. For this reason, it is important to keep at least one space between the bar code and the surrounding text to prevent overlapping.
- ❑ When either a Start or a Stop character is input, Codabar fonts automatically insert the complimentary character.
- ❑ If neither a Start nor a Stop character is input, these characters are automatically input as the letter *A*.

Character type	Numbers (0 to 9) Symbols (- \$ : / . +)
Number of characters	No limit
Font size	When OCR-B is not used: 26 pt or more (up to 96 pt in Windows 2000/NT). Recommended sizes are 26 pt, 52 pt, 78 pt and 104 pt.  When OCR-B is used: 36 pt or more (up to 96 pt in Windows 2000/NT). Recommended sizes are 36 pt, 72 pt, 108 pt and 144 pt.

The following codes are inserted automatically and need not be input by hand:

- ❑ Left/Right quiet zone
- ❑ Start/Stop character (when not input)
- ❑ Check digit

Print Sample

EPSON Codabar	EPSON Codabar CD
	
EPSON Codabar Num	EPSON Codabar CD Num
 A 1 2 3 4 5 6 7 A	 A 1 2 3 4 5 6 7 4 A

*Appendix C*

---

**Contacting Customer Support**

For users in Hong Kong .....182

---

## ***For users in Hong Kong***

To obtain technical support as well as other after-sales services, users are welcome to contact EPSON Hong Kong Limited.

### *Internet home page*

EPSON Hong Kong has established a local home page in both Chinese and English on the Internet to provide users with the following information:

- Product information
- Answers to Frequently Asked Questions (FAQs)
- Latest versions of EPSON product drivers

Users can access our World Wide Web home page at:

<http://www.epson.com.hk>

### *Electronic bulletin board system*

An electronic bulletin board system (BBS) is also available to obtain product information and the latest versions of product drivers. You can log on to the following number for the BBS service:

BBS: (852) 2827-4244

### *Technical Support Hotline*

You can also contact our technical staff at the following telephone and fax numbers:

Phone: (852) 2585-4399

Fax: (852) 2827-4383

---

# Glossary

## **ASCII**

American Standard Code for Information Interchange. A standardized way of assigning codes to characters and control codes. The system is widely used by manufacturers of computers, printers, and software.

## **auto line feed**

A printer feature in which each carriage return (CR) code is automatically accompanied by a line feed (LF) code.

## **bitmap font**

The dot-by-dot representation of a font. Bitmap fonts are displayed on computer screens and printed on dot matrix printers. See *outline font*.

## **buffer**

See *memory*.

## **character set**

A collection of letters, numbers, and symbols used in a particular language.

## **clients**

The computers that get services from the server on a network. The service may differ depending on the access rights approved by the administrator.

## **cpi (characters per inch)**

A measure of the size of fixed-width text characters.

## **default**

A value or setting that takes effect when the printer is turned on, reset, or initialized.

## **dots per inch (dpi)**

The number of dots per inch is a measure of printer resolution. The higher the number of dots, the higher the resolution.

## **download**

To transfer information from the computer to the printer.

## **dpi**

See *dots per inch (dpi)*.

## **driver**

The part of a software program that converts commands from the program into commands used by the printer. Also known as the printer driver.

## **drum**

The part of the printer mechanism where the image is formed and transferred to paper.

***fixed-width font***

A font whose characters are allotted the same amount of horizontal space, no matter the width of the character. Thus the uppercase *M* receives the same amount of space as the letter *l*.

***font***

A set of characters and symbols that share a common typographic design and style.

***halftone***

A grayscale image that is composed of small dots. The dots can be close together to create black or more widely spaced to create gray or white areas in the image. Newspaper photographs are common examples of halftones.

***imaging cartridge***

The imaging cartridge contains a photosensitive print drum and supply of toner.

***initialization***

The act of returning the printer to its defaults (fixed set of conditions).

***interface***

The connection between the printer and the computer. A parallel interface transmits data one character or code at a time, and a serial interface transmits data one bit at a time.

***landscape***

Printing that is oriented sideways on the page. This orientation gives you a page that is wider than it is high and is useful for printing spreadsheets.

***memory***

The part of the printer's electronic system that is used to store information. Some information is fixed and is used to control how the printer operates. Information that is sent to the printer from the computer (such as downloaded fonts) is stored in memory temporarily. See also *RAM* and *ROM*.

***orientation***

Refers to the direction in which characters are printed on a page. This direction is either portrait or landscape.

***outline font***

A font whose outline is described mathematically, allowing it to be rendered (printed or drawn) smoothly at any size.

***pitch***

A measure of the number of characters per inch (cpi) for fixed-width fonts.

***portrait***

Printing that is oriented upright on the page (as opposed to landscape, in which printing is oriented sideways on the page). This is the standard orientation for printing letters or documents.



**printer driver**

See *driver*.

**proportional font**

A font whose characters have varying amounts of horizontal space depending on the width of the character. Thus the uppercase *M* takes up more horizontal space than the lowercase *l*.

**RAM**

Random Access Memory (RAM) is where temporary information is stored.

**resolution**

A measure of the fineness and clarity of images produced by the printer or monitor. Printer resolution is measured in dots per inch. Monitor resolution is measured in pixels.

**RItech**

Resolution Improvement Technology. A feature that smooths the jagged edges of printed lines or shapes.

**ROM**

Read Only Memory (ROM) is where permanent information is stored.

**scalable font**

See *outline font*.

**server**

The computer used to provide services for the clients on a network. The server holds the database, files, printers, etc., and access rights of each service.

**status sheet**

A report that lists the printer settings and other printer information.

---

# Index

## Numerics

- 250-Sheet Lower Paper Cassette Unit
  - A3 Universal
    - about, 103
    - installing, 103
    - removing, 105
    - specifications, 159

## A

- Additional Driver
  - using, 86

## C

- Cleaning
  - inside the printer, 146
  - paper roller, 150
  - printer case, 149
  - removing spilled toner, 148
- Clients
  - with Windows 2000, 95
  - with Windows Me/98/95, 93
  - with Windows NT 4.0, 98

## E

- Envelopes, 35
- EPSON BarCode Fonts
  - about, 162
  - formatting, 168
  - inputting, 168
  - installing, 164
  - printing, 166
  - specifications, 169
  - system requirements, 164
- EPSON Status Monitor 3 (Macintosh)
  - about, 75
  - printer status, 76
  - setting monitoring, 77

- starting, 75
- Status Alert Window, 78
- EPSON Status Monitor 3 (Windows)
  - about, 50
  - accessing, 50
  - monitoring preferences, 54
  - printer status, 52
  - Status Alert window, 56

## F

- Fonts
  - EPSON BarCode Fonts, 162

## I

- Imaging cartridge
  - replacing, 113
  - specifications, 160
- Installing
  - 250-Sheet Lower Paper Cassette
    - Unit A3 Universal, 103
  - memory module, 106

## L

- Labels, 36

## M

- Memory module
  - about, 106
  - installing, 106
  - removing, 110
  - specifications, 160

## O

- Options
  - 250-Sheet Lower Paper Cassette
    - Unit A3 Universal, 103
  - memory modules, 106

## **P**

### Paper

- available, 20
- loading, 24
- not be used, 22
- preventing paper jams, 18
- specifications, 153

### Paper source

- 250-Sheet Lower Paper Cassette
  - Unit A3 Universal, 23
- MP tray, 23
- standard lower paper cassette, 23

### Precautions

- power on/off cautions, 10
- safety, 7

### Printer

- cleaning, 146
- parts, 12
- transporting, 151

### Printer driver

- about, 40
- accessing (Macintosh), 67
- accessing (Windows), 40
- uninstalling (Macintosh), 80
- uninstalling (Windows), 62

### Problems

- communication, 142
- memory, 138
- operational, 126
- printer driver and utility, 140
- printout, 128
- print quality, 130
- using options, 139

## **R**

### Removing

- 250-Sheet Lower Paper Cassette
  - Unit A3 Universal, 105
- memory modules, 110

### RITech

- about, 16

## **S**

### Safety

- precautions, 7
- Warnings, Cautions, and Notes, 7

### Status Sheet

- printing, 120

## **T**

### Thick paper, 38

### Toner Save mode

- about, 16

### Transparencies, 37

### Troubleshooting

- paper jam at the standard lower paper cassette, 122
- preventing paper jams, 18

## **U**

### Uninstalling

- additional driver, 64
- Printer software (Macintosh), 80
- printer software (Windows), 62
- USB device driver, 65

### USB connection

- setting (Macintosh), 78
- setting (Windows), 57

## **W**

### Watermark

- using (Macintosh), 71
- using (Windows), 46

## EPSON OVERSEAS MARKETING LOCATIONS

---

### **Epson America, Inc.**

3840 Kilroy Airport Way  
Long Beach, CA 90806  
Phone: (562) 981-3840  
Fax: (562) 290-5220

### **EPSON UK LTD.**

Campus 100, Maylands Avenue,  
Hemel Hempstead, Herts,  
HP2 7TJ, U.K.  
Phone: (+44) 01442 261144  
Fax: (+44) 01442 227227

---

### **EPSON DEUTSCHLAND GmbH**

Zülpicher Straße 6,  
40549 Düsseldorf Germany  
Phone: (0211) 56030  
Fax: (0211) 5047787

### **EPSON FRANCE S.A.**

68 bis, rue Marjolin  
92300, Levallois-Perret, France  
Phone: 33.1.41.86.26.56  
Telex: 610657

---

### **EPSON AUSTRALIA PTY. LTD.**

70 GIBBES STREET,  
CHATSWOOD 2067 NSW.  
Phone: 2-9903-9000  
Fax: 2-9903-9177

### **EPSON SINGAPORE PTE. LTD.**

No. 1 Temasek Avenue #36-00  
Millenia Tower, Singapore 039192  
Phone: (065) 33 77 911  
Fax: (065) 33 41 185

---

### **EPSON HONG KONG LTD.**

Rooms 4706-10, 47/F,  
China Resources Bldg.,  
26 Harbour Road, Wanchai, Hong Kong  
Phone: 2585-4300  
Fax: 2827-7083

### **EPSON TAIWAN TECHNOLOGY & TRADING LTD.**

10F, No. 287 Nanking E. Road, Sec. 3,  
Taipei, Taiwan, R.O.C.  
Phone: (02) 717-7360  
Fax: (02) 712-9164

---

### **EPSON ITALIA S.p.A.**

V.le F.lli Casiraghi 427  
20099 Sesto S.Giovanni  
MI, Italy  
Phone: +3902262331  
Fax: +39022440750

### **EPSON IBERICA S.A.**

Av. de Roma, 18-26  
08290 Cerdanyola del Valles  
Barcelona, Spain  
Phone: 582. 15.00  
Fax: 582. 15.55

---

### **SEIKO EPSON CORPORATION (Hirooka Office)**

80 Harashinden, Hirooka  
Shiojiri-shi, Nagano-ken  
399-0785 Japan

### **EPSON PORTUGAL, S.A.**

R. do Progresso, 471, 1° Perafita  
4460 Matosinhos, Portugal  
Phone: (02) 996 14 02  
Fax: (02) 996 14 11

**EPSON**