

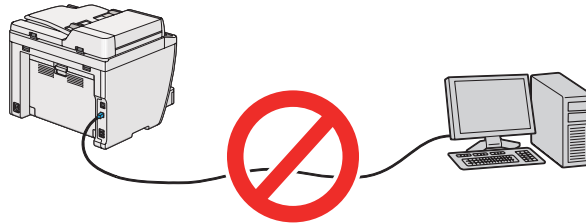
AL-MX200 Series

Software Installation Guide

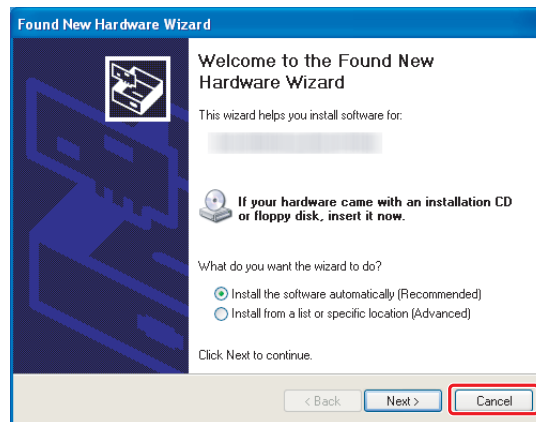
Software Installation

Note for USB connection:

- ❑ Do not connect the USB cable until you are instructed to do so.



- ❑ If this screen appears, click **Cancel**.



Note for Ethernet connection:

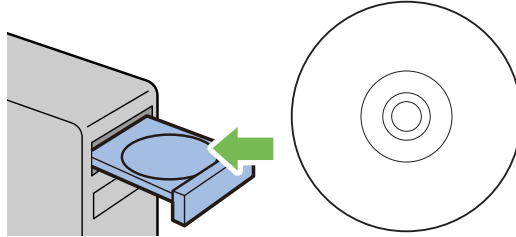
Before software installation, connect and turn on the printer.

Note for wireless connection (AL-M200DWF only):

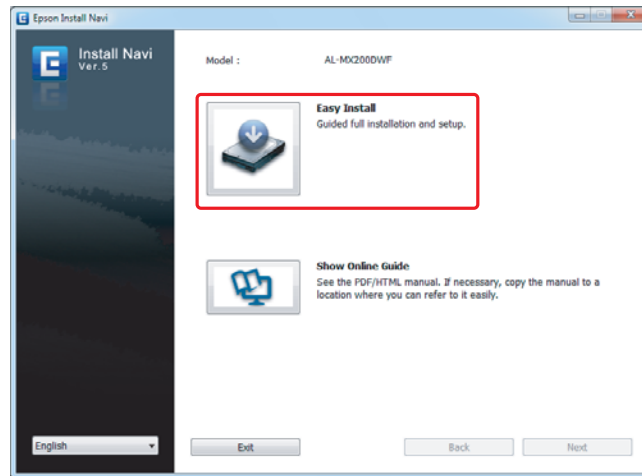
See *Wireless Network Setup Guide*.

Installing Print Drivers on Computers Running Windows

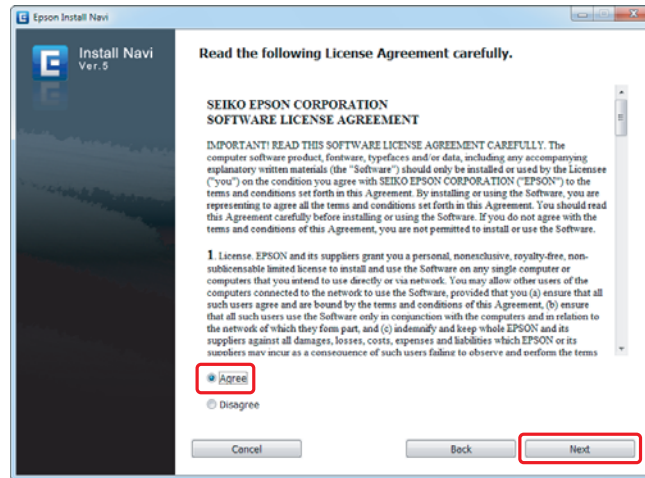
1. Insert the Software Disc.



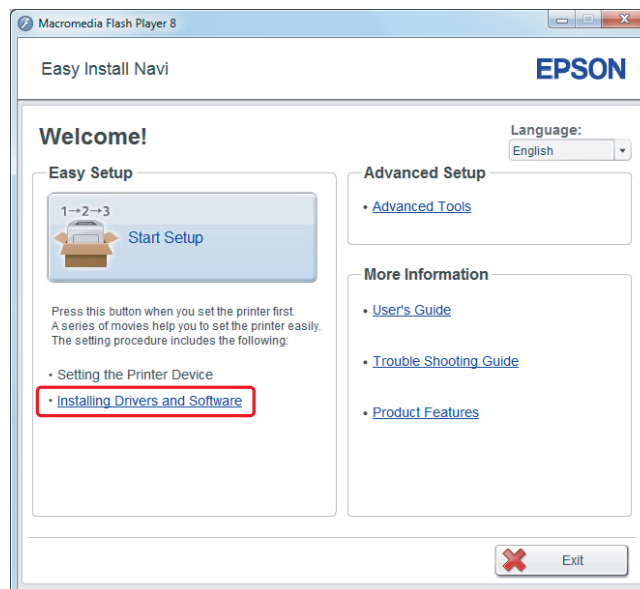
2. Select a language from the list box at the bottom left of the screen, and then click **Easy Install**.



3. If you agree to the terms of the **SOFTWARE LICENSE AGREEMENT**, select **Agree** and click **Next**.



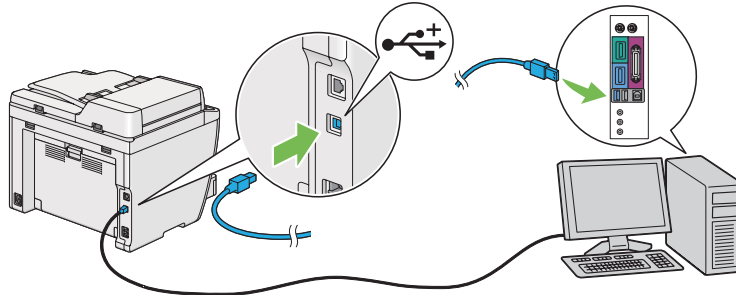
4. Click **Installing Drivers and Software**.



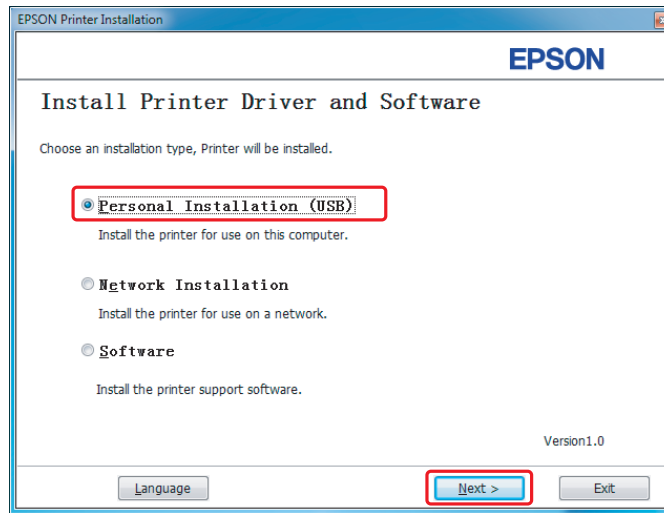
For setting USB connection, go to “USB connection setup” on page 5.
For setting Ethernet connection, go to “Ethernet connection setup” on page 6.

USB connection setup

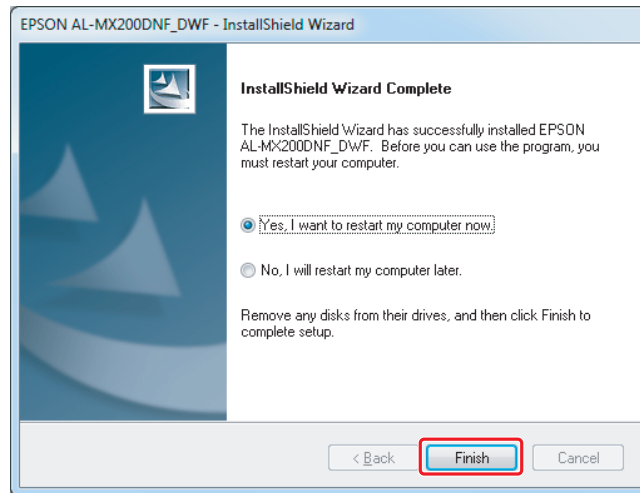
1. Connect the printer and computer with a USB cable and turn on the printer.



2. Select **Personal Installation (USB)** and click **Next**.

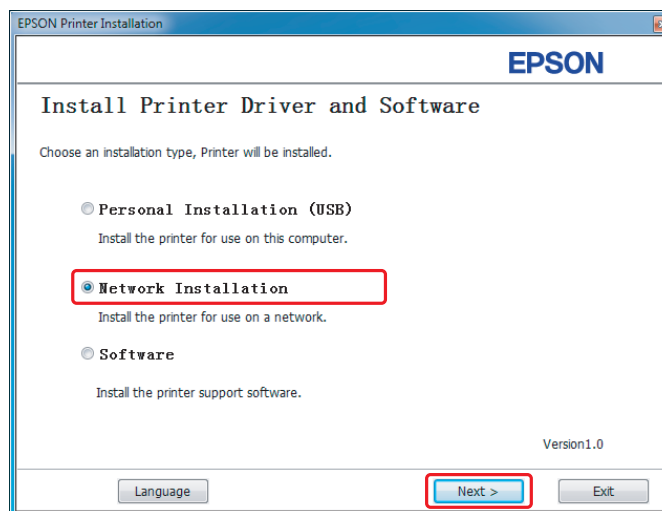


3. Select **Yes, I want to restart my computer now.** and click **Finish.**

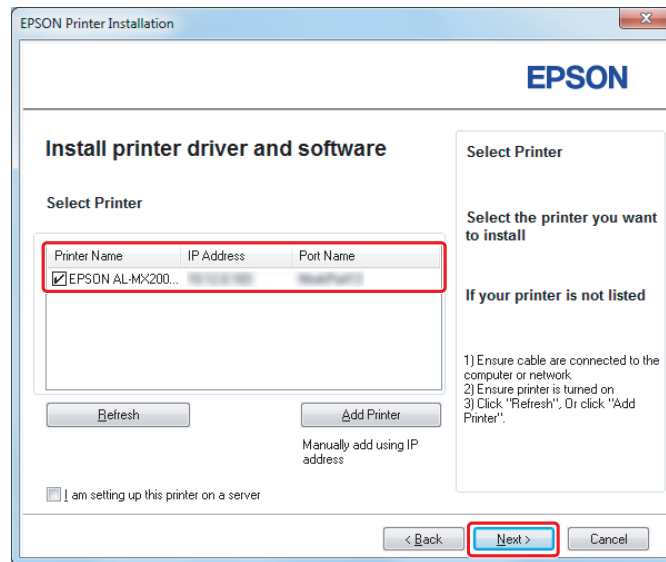


Ethernet connection setup

1. Select **Network Installation** and click **Next.**



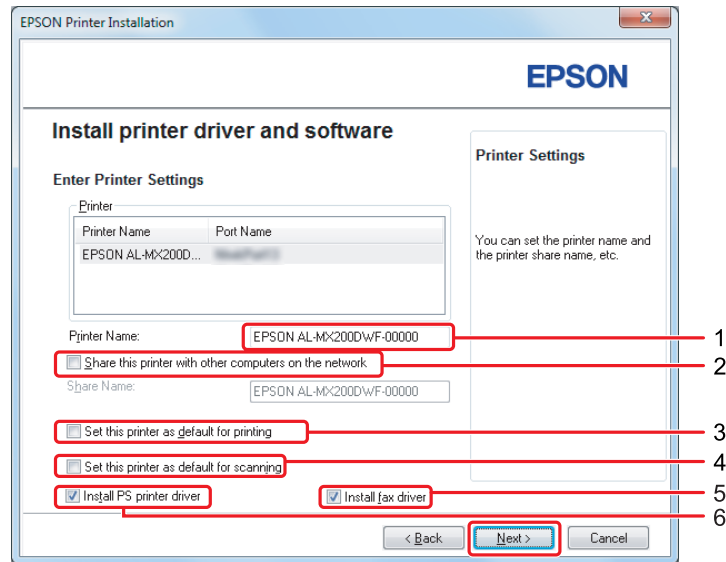
2. Select the printer and click **Next**.



Note:

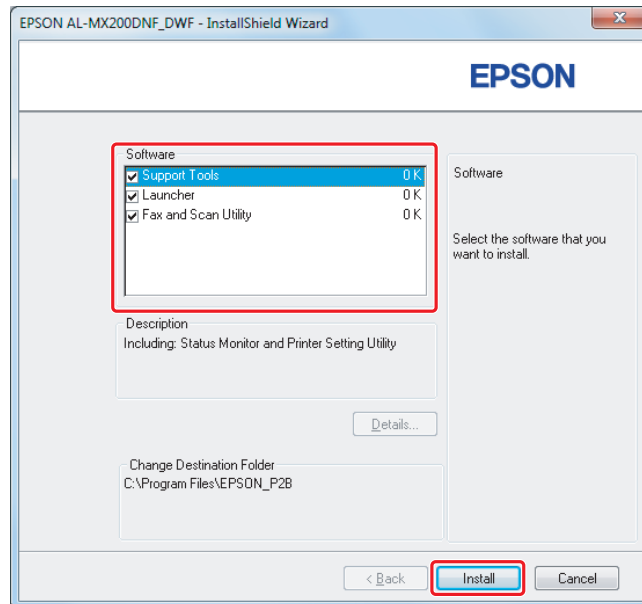
- ❑ If the target printer is not displayed on the list, click **Refresh** to refresh the list, or click **Add Printer** to add a printer to the list manually.
- ❑ If you have installed this printer on the server computer, select **I am setting up this printer on a server** check box.
- ❑ When using AutoIP, 0.0.0.0 is displayed in the installer. Before continuing, enter a valid IP address.

3. Specify the printer settings and click **Next**.

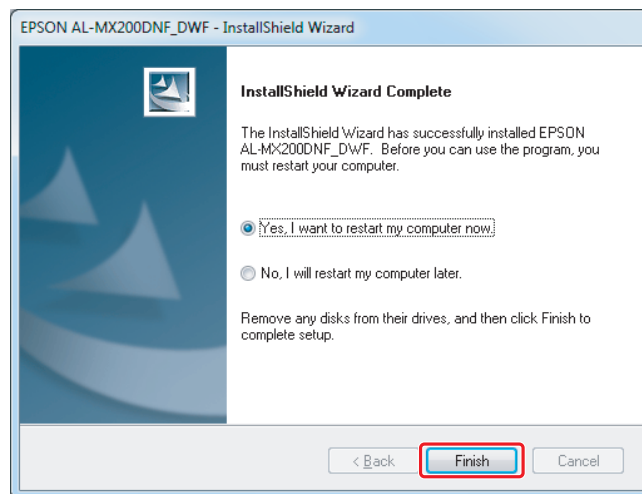


| | |
|---|--|
| 1 | Enter the printer name. |
| 2 | Select the Share this printer with other computers on the network check box if you want to share the printer on the network. |
| 3 | Select the Set this printer as default for printing check box if you want to use the printer as a default printer for printing. |
| 4 | Select the Set this printer as default for scanning check box if you want to use the printer as a default printer for scanning. |
| 5 | Select the FAX Driver check box if you want to use a fax function on the printer. |
| 6 | Select the Install PS printer driver check box if you want to install the PS printer driver. |

4. Select the software and documentation to install and click **Install**.



5. Select **Yes, I want to restart my computer now.** and click **Finish**.

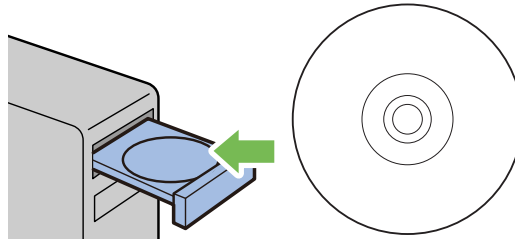


See “Printing a Test Page” on page 17.

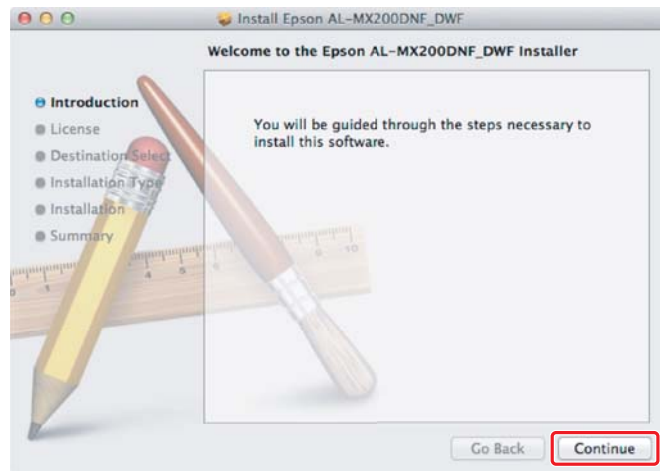
Installing Print Drivers on Computers Running Mac OS X

Installing a print driver

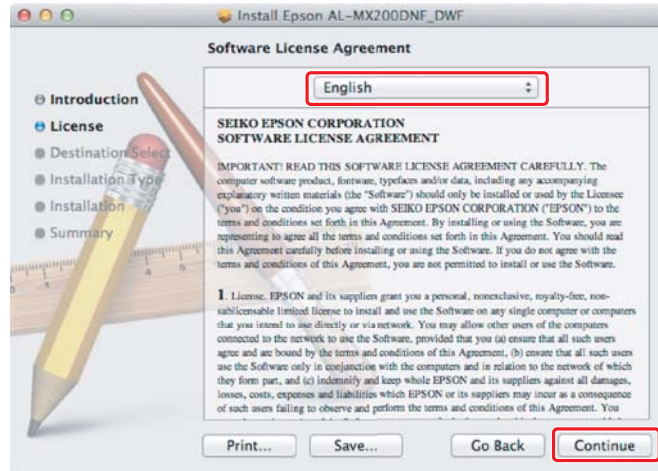
1. Insert the Software Disc.



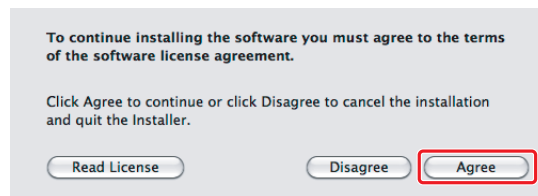
2. Double-click **EPSON**.
3. Double-click **AL-MX200DNF_DWF Software Installer**.
4. Click **Continue**.



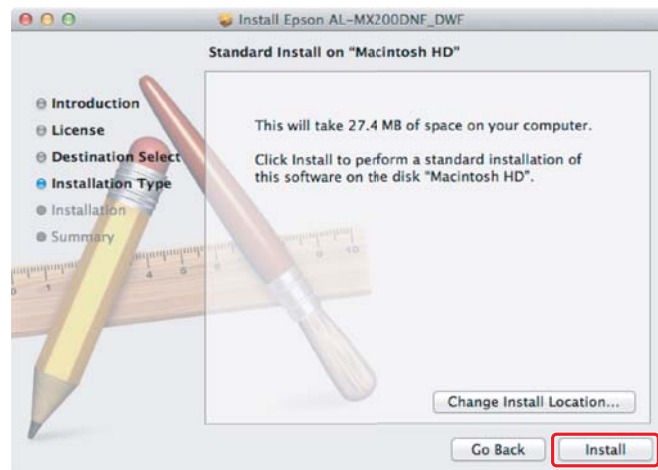
5. Select a language and click **Continue**.



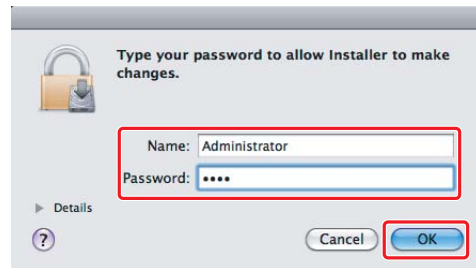
6. If you agree to the terms of the software license agreement, click **Agree**.



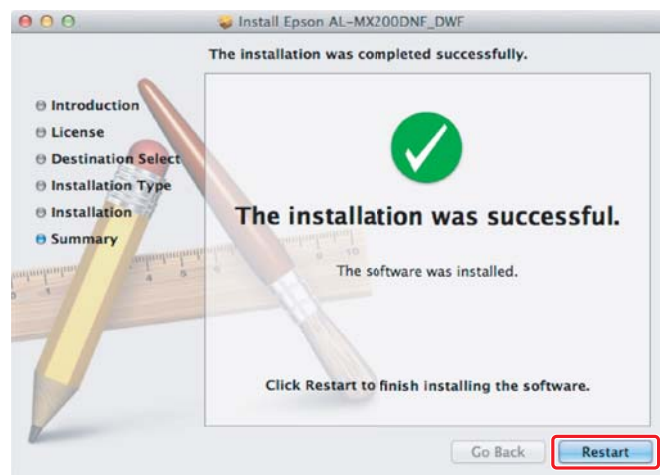
7. Click **Install**.



8. Enter the administrator's name and password, and click **OK**.



9. Click **Restart**.

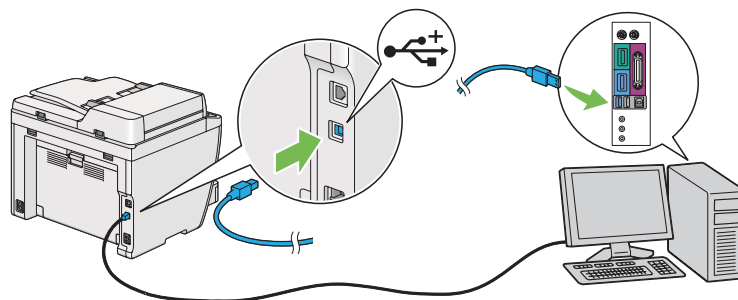


Adding a printer

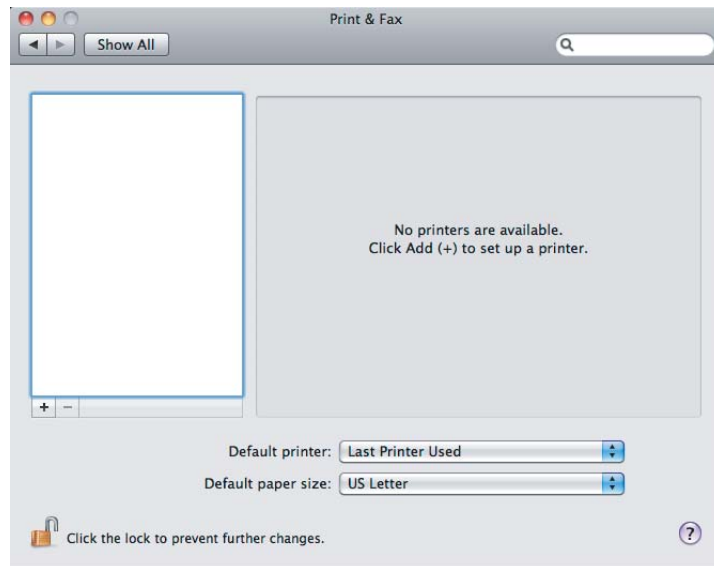
For USB connection

Note:

Connect the printer and computer with a USB cable and turn on the printer.



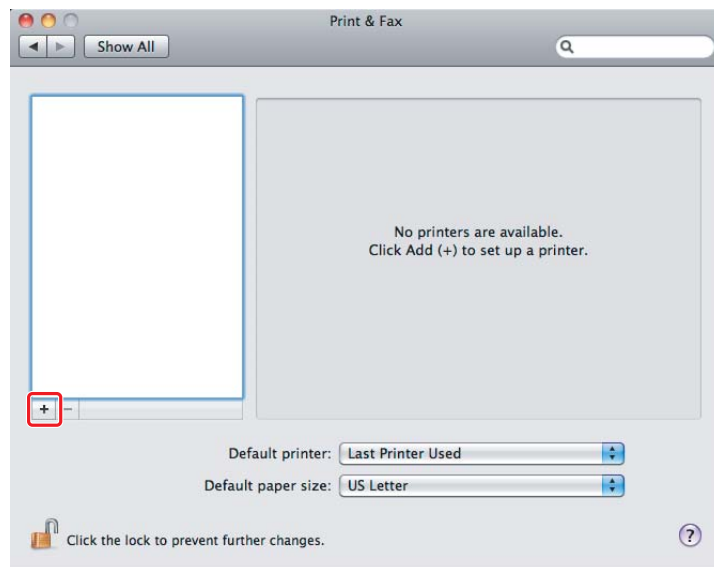
1. Open **Print & Fax** (**Print & Scan** for Mac OS X 10.7).



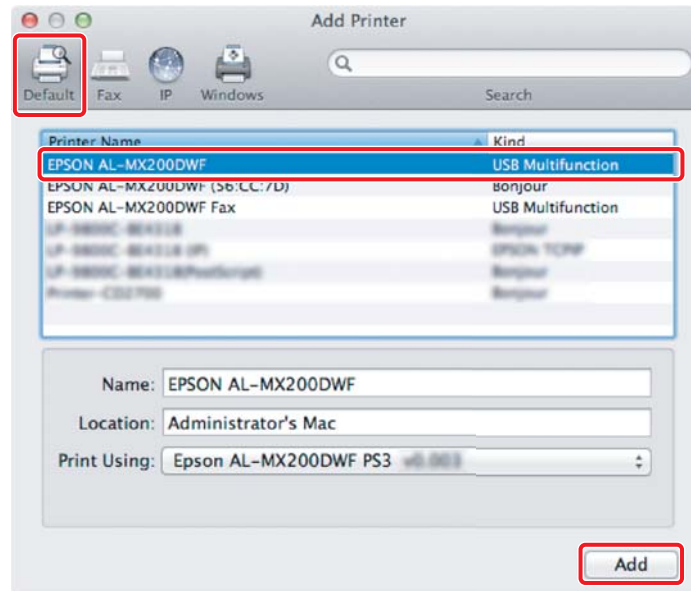
Note:

- ❑ You can find **Print & Fax** (**Print & Scan** for Mac OS X 10.7) in **System Preferences**.
- ❑ If your printer is already added, go to “Printing a Test Page” on page 17.

2. Click **+**.



3. Click **Default**, select the printer to be used, and click **Add**.

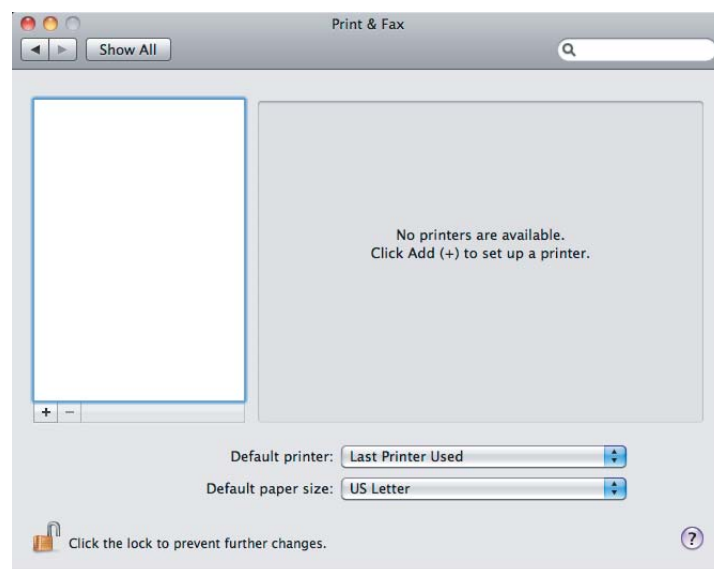


For Ethernet connection

Note:

Confirm your computer is connected on the network.

1. Open **Print & Fax** (**Print & Scan** for Mac OS X 10.7).

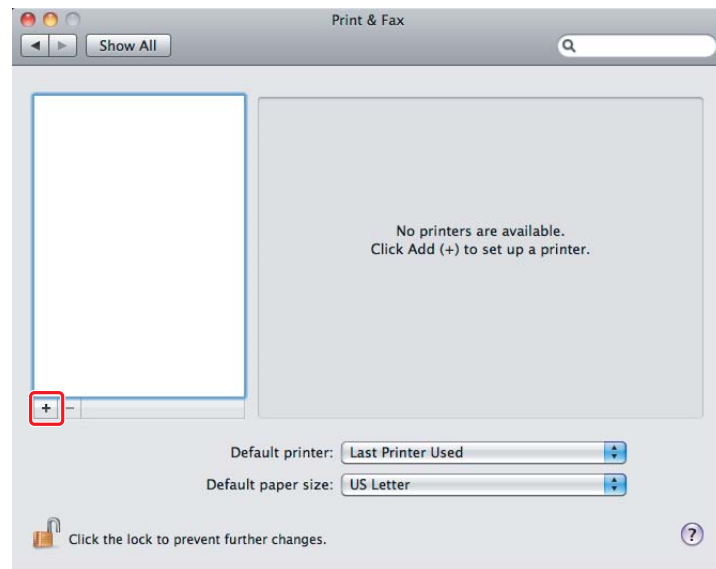


Note:

❑ You can find **Print & Fax** (**Print & Scan** for Mac OS X 10.7) in **System Preferences**.

❑ If your printer is already added, go to “Printing a Test Page” on page 17.

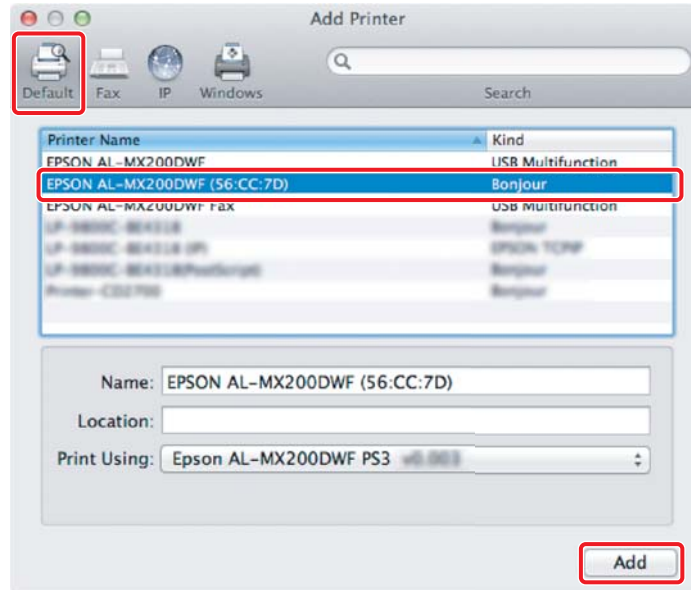
2. Click +.



3. Select the printer to be used.

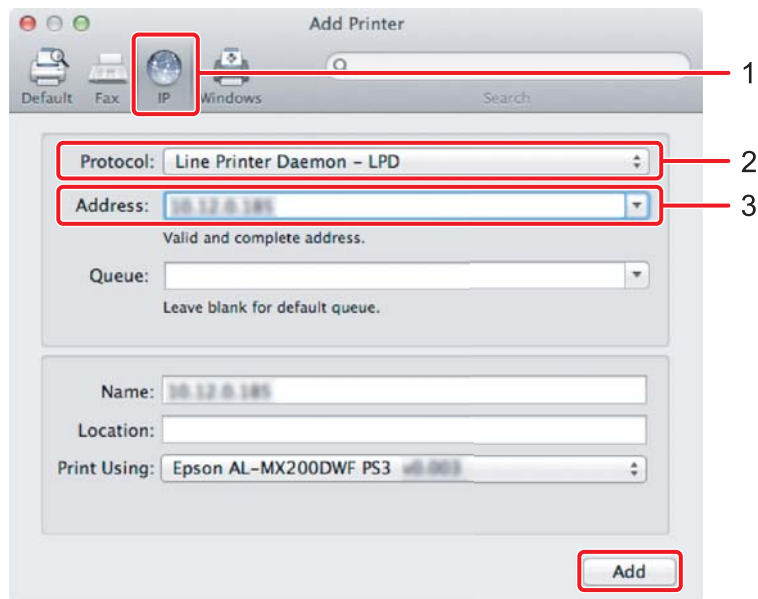
For Bonjour

Click **Default**, select the printer, and click **Add**.



For IP Printing

Specify the IP printing settings and click **Add**.



| | |
|---|-------------------|
| 1 | Click IP . |
|---|-------------------|

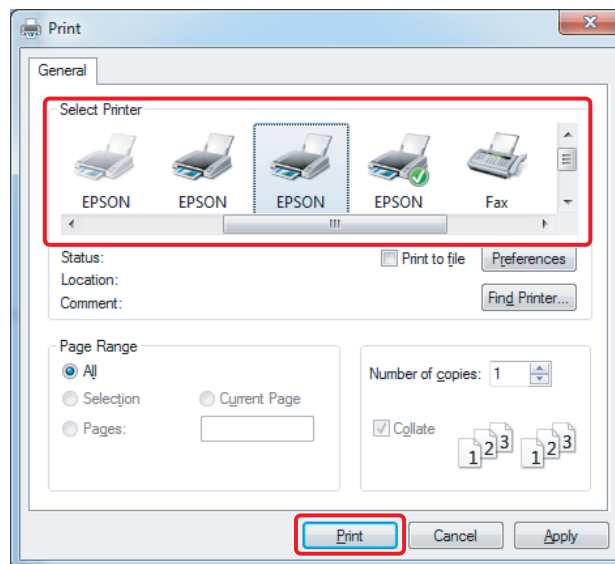
| | |
|---|---|
| 2 | Select Line Printer Daemon - LPD for Protocol . |
| 3 | Enter the IP address of the printer. |

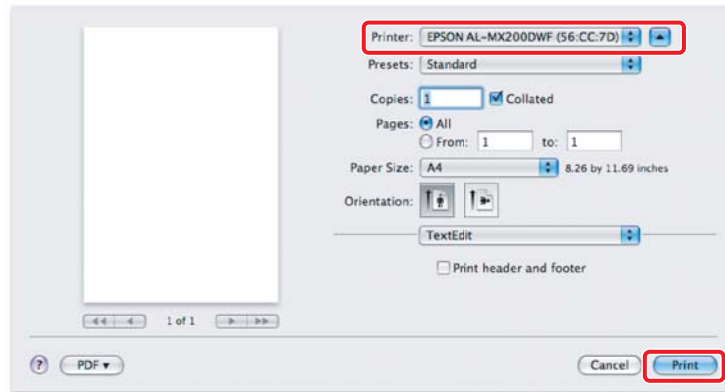
Printing a Test Page

Print a test page to make sure that the software is correctly installed. The following explains how to print from the typical application.

1. Open the file to print in your application.
2. From the **File** menu, click **Print**.
3. Confirm that the printer is selected and click **Print**.

For Windows:



For Mac OS X:**For more information**

For details on the software, refer to *User's Guide*.

