

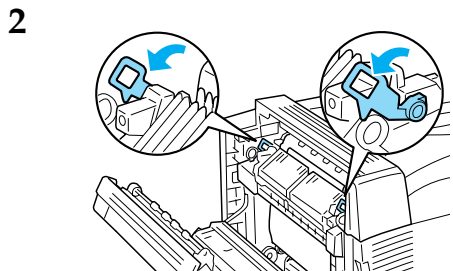
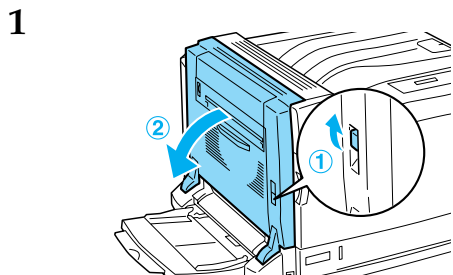
# Paper Jam Guide



Cautions must be observed to avoid damage to your equipment.

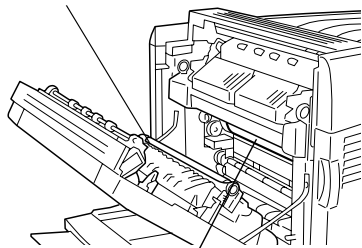
When the LCD panel displays the Jam XXX error message, choose the appropriate description to clear the jammed paper.  
For more information, see the Online Reference Guide.

## Jam B (cover B)

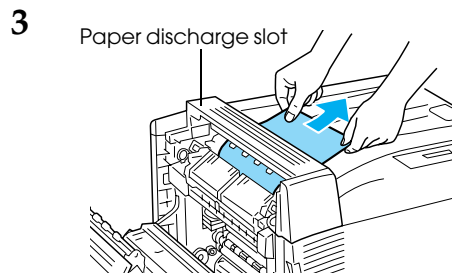


**Caution:** Do not touch the transfer roller (black rubber roller) of the transfer unit or the transfer roller of the intermediate transfer unit. Touching them may deteriorate print quality, or damage the transfer roller and require replacement.

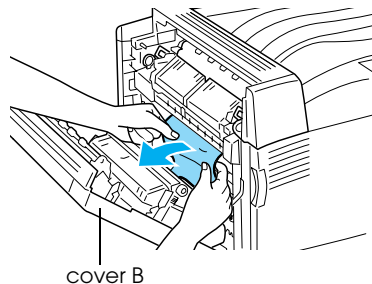
Transfer roller (black rubber roller) of the transfer unit



Transfer roller of the intermediate transfer unit

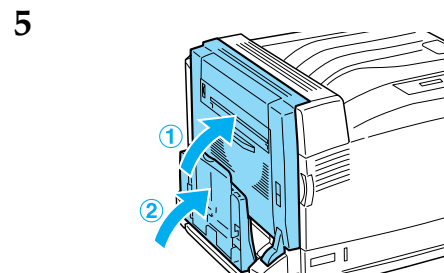
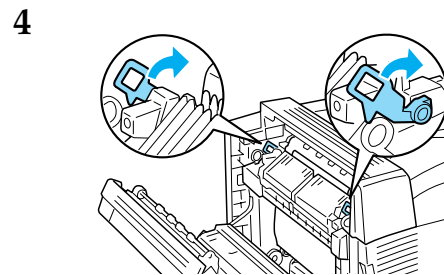


If the end of the jammed paper sticks out of the paper discharge slot, gently remove the paper from the slot and proceed to step 5.

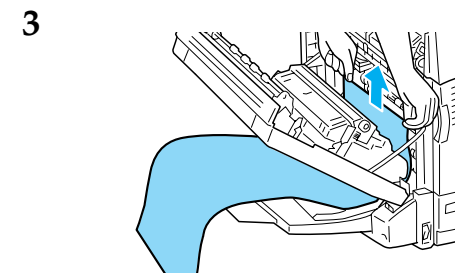
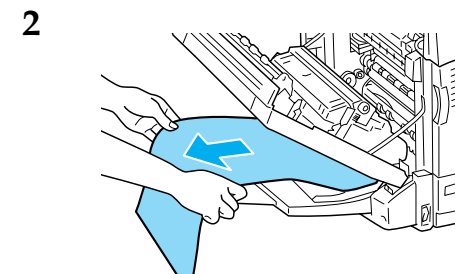
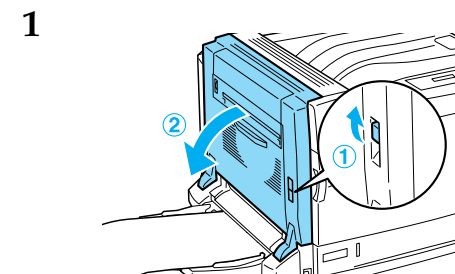


cover B

If the jammed paper does not stick out of the paper discharge slot, remove the jammed paper from inside cover B.



## For Long-size Paper

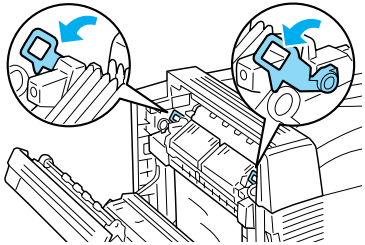


Continue to the next page

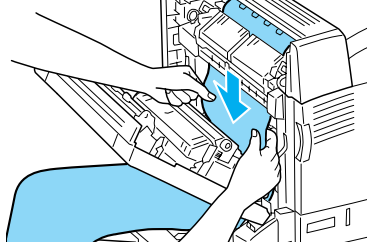
## Jam B (cover B)

For Long-size Paper (continued)

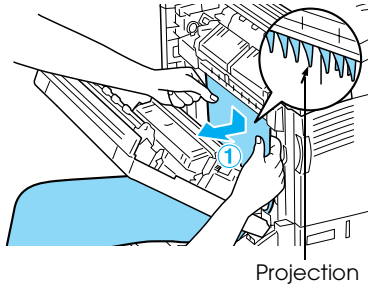
4



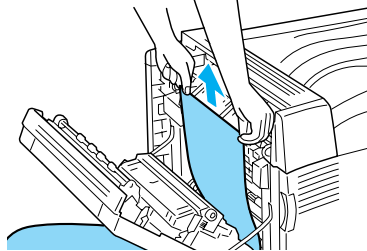
7



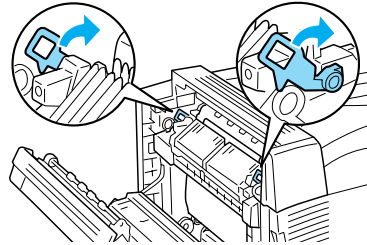
5



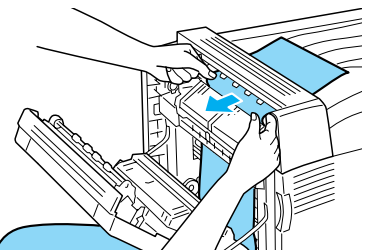
8



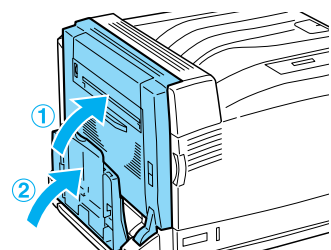
9



6



10

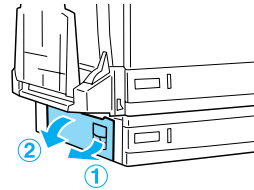


## Jam E (cover E)

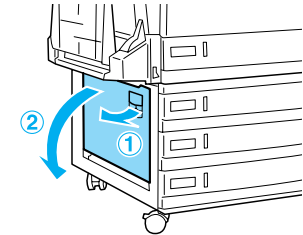
For the Optional 500-sheet Paper Cassette Unit A3

For the Optional 1500-sheet Paper Cassette Unit A3

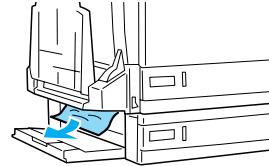
1



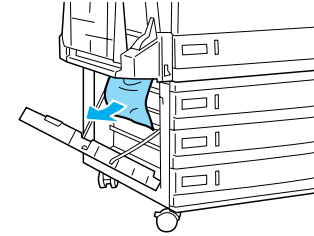
1



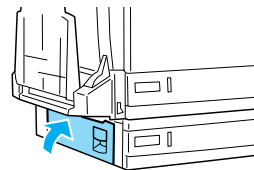
2



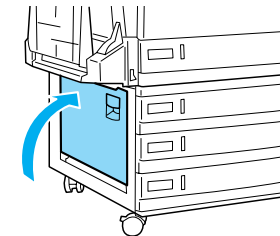
2



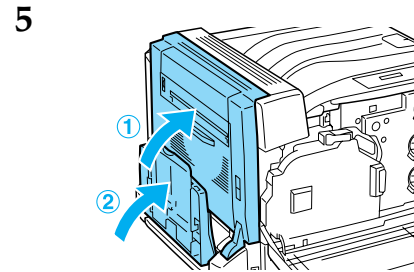
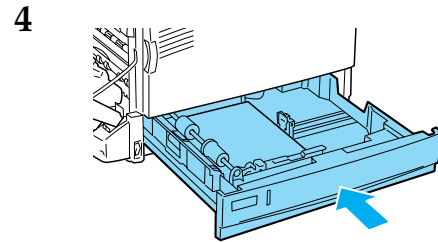
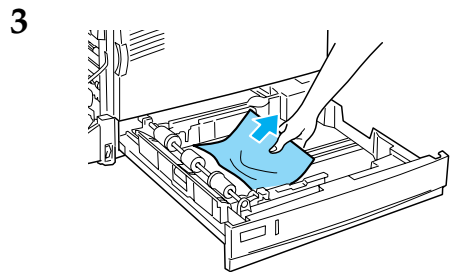
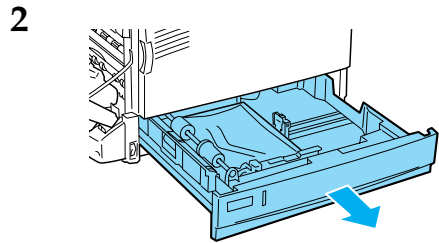
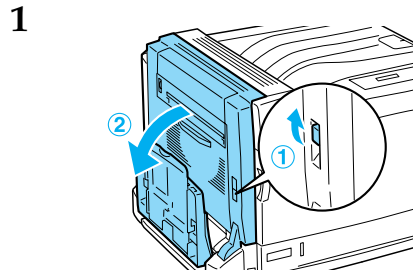
3



3

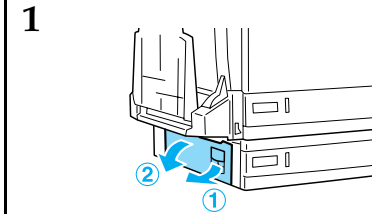


### Jam B, C1 (cover B and standard lower paper cassette)

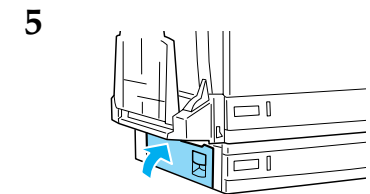
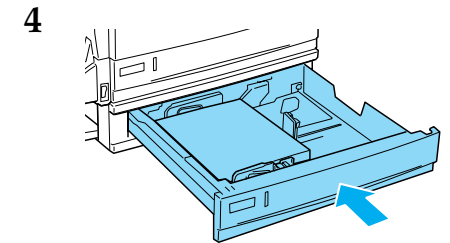
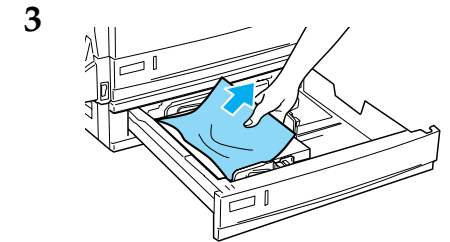
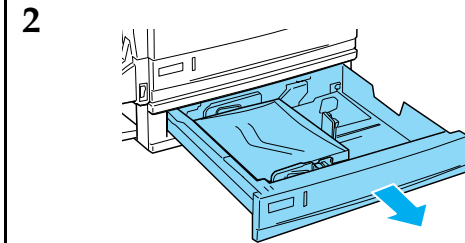


### Jam E, C2/E, C3/E, C4 (cover E and optional paper cassettes)

#### For the Optional 500-sheet Paper Cassette Unit A3



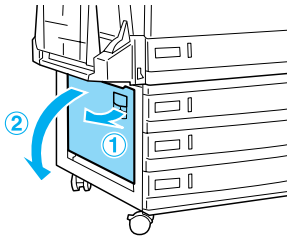
If the jammed paper is found, follow step 2 of Jam E to remove it by holding the end of the paper. When the jammed paper has been removed, proceed to step 5.



## Jam E, C2/E, C3/E, C4 (cover E and optional paper cassettes)

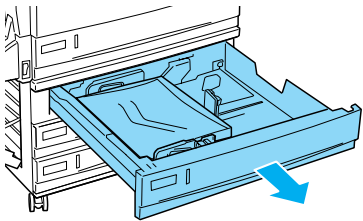
### For the Optional 1500-sheet Paper Cassette Unit A3

1

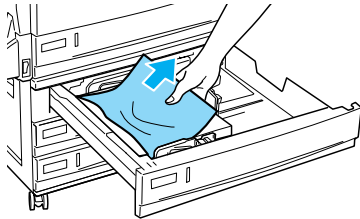


If the jammed paper is found, follow step 2 of Jam E to gently remove it by holding its end. When the jammed paper has been removed, proceed to step 5.

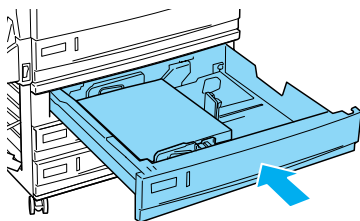
2



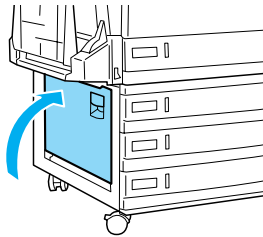
3



4

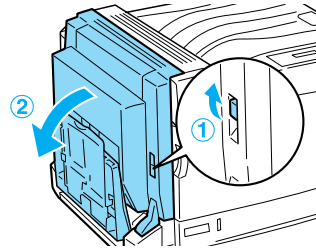


5



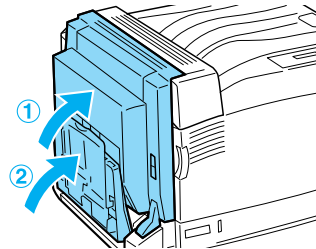
## Jam B, D (cover B and optional Duplex Unit)

1

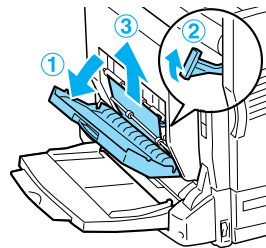


If the paper end is visible, follow step 2 of Jam B to remove it by holding the end of the paper.

2



3



4

