



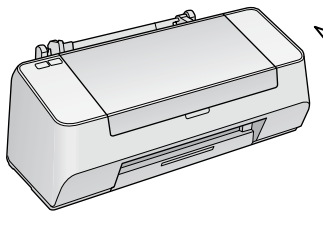
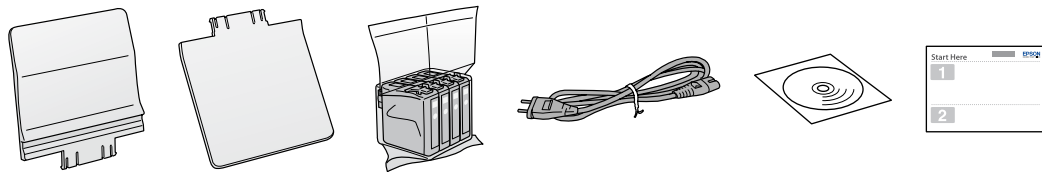
# Start Here

## Unpacking

# 1

Contents may vary by location.

Do not open the ink cartridge package until you are ready to install it in the printer. The cartridge is vacuum packed to maintain its reliability.



Remove all protective materials.

## Turning On

# 2

**1**

Connect and plug in.

**2**

Turn on.

## Installing the Ink Cartridges

# 3

**1**

Open.

**2**

Open.

**3**

Shake and unpack.

**4**

Remove yellow tape.

**5**

Install.

Press (click).

**6**

Close.

**7**

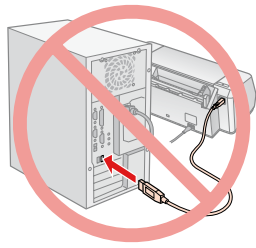
Press and wait about 2 min.

The ink cartridges first installed in your printer will be partly used to charge the print head. These cartridges may print fewer pages compared to subsequent ink cartridges.



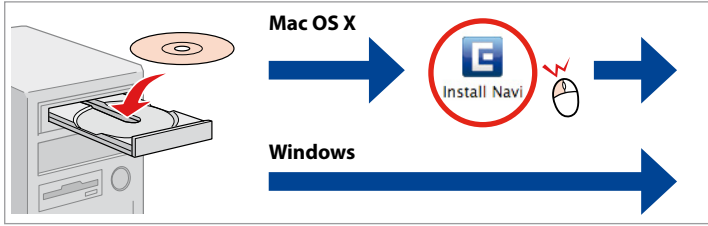
# Installing the Software

# 4



Do not connect the USB cable until you are instructed to do so.

1

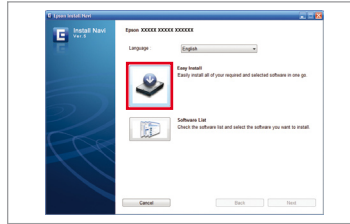


Insert.

Windows: No installation screen? →

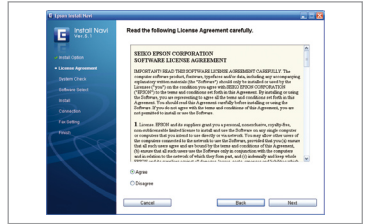


2



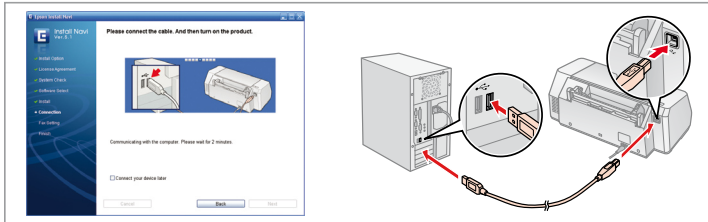
Click.

3



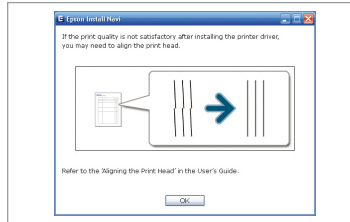
Follow the instructions.

4



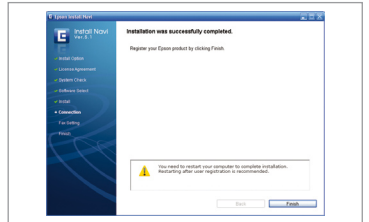
Connect to your PC.

5



Check.

6

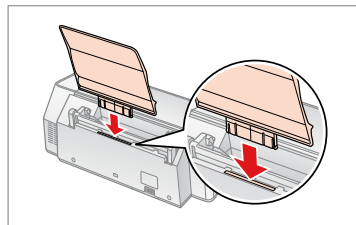


Installation complete.

# Loading Paper

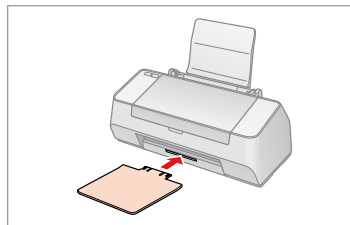
# 5

1



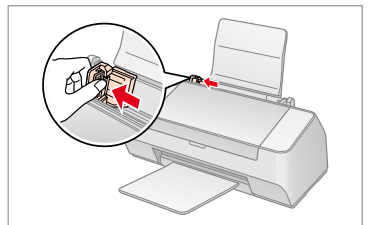
Insert.

2



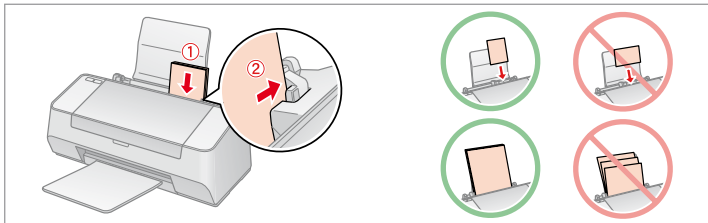
Insert.

3



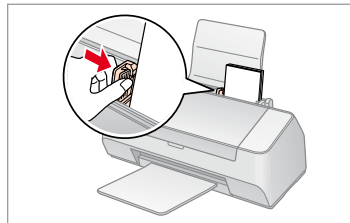
Pinch and slide.

4



Load the paper with the printable side up.

5

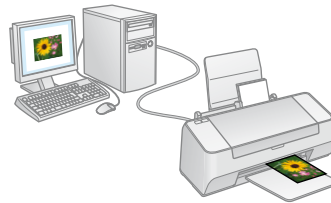


Fit.

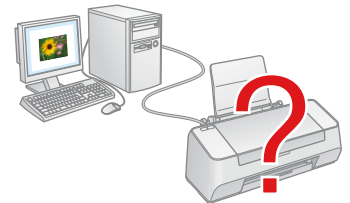
# Getting More Information



User's Guide



Printing



Troubleshooting and maintenance