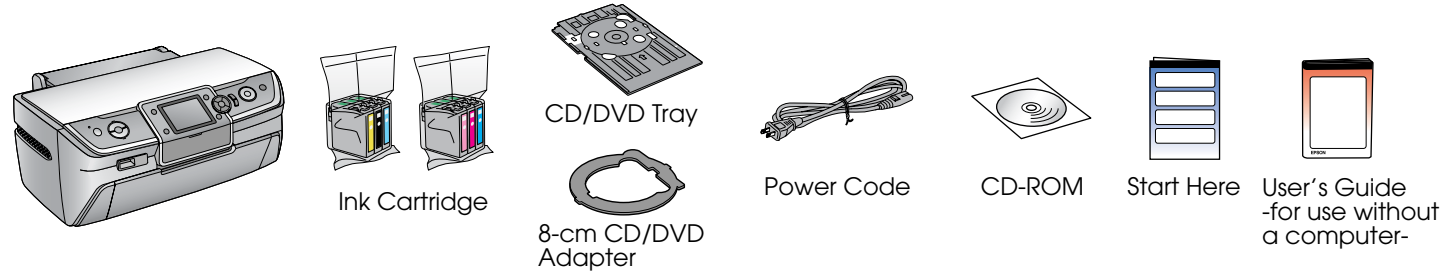


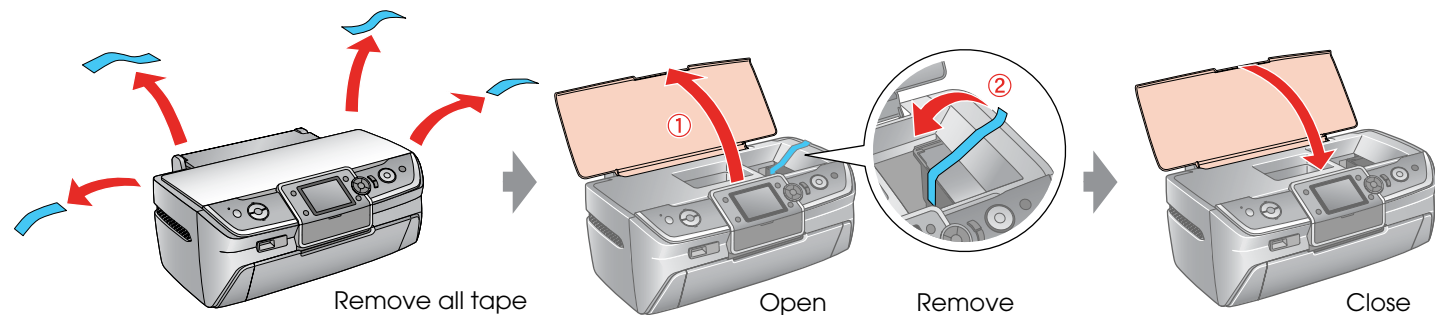
Start Here

1. Unpacking

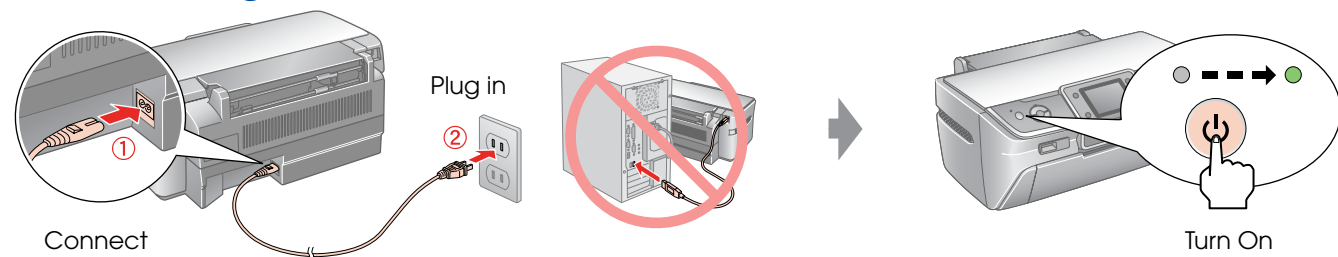
Note:
Do not open the ink cartridge package until you are ready to install it in the printer.
The cartridge is vacuum packed to maintain its reliability.



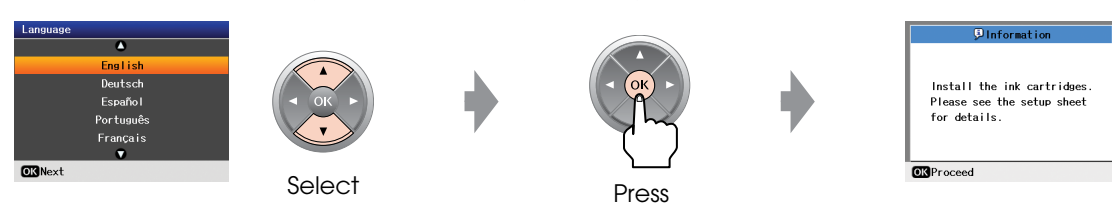
2. Removing Protective Tape



3. Turning On

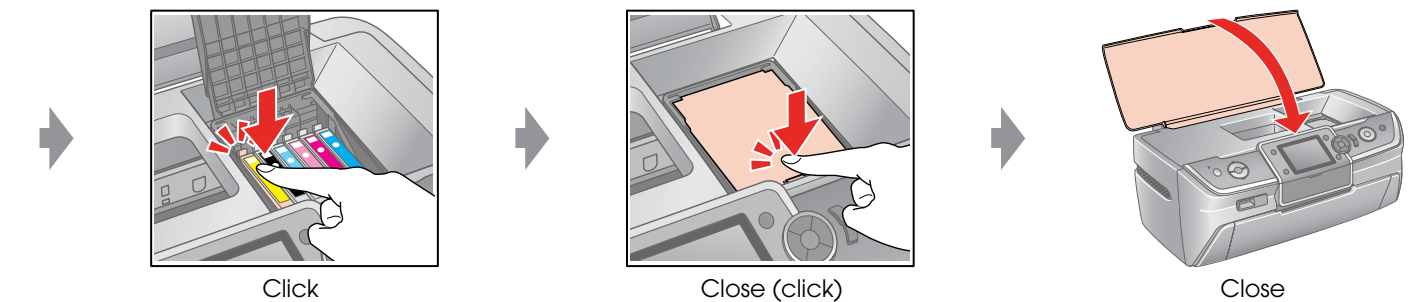
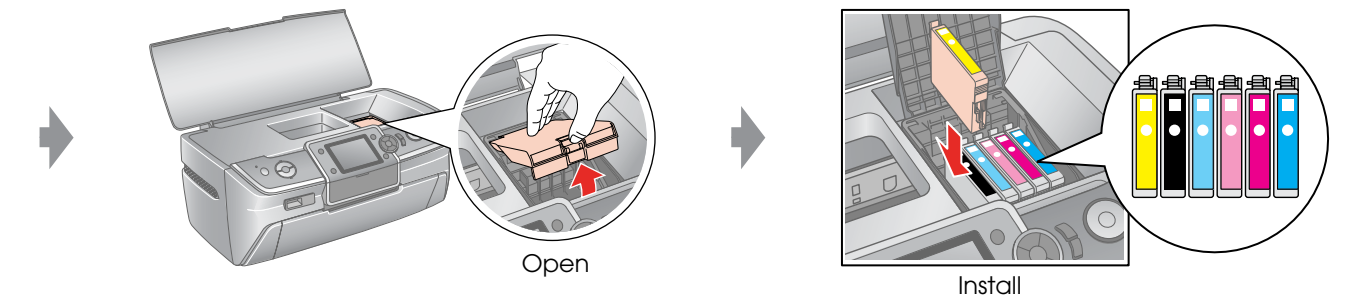
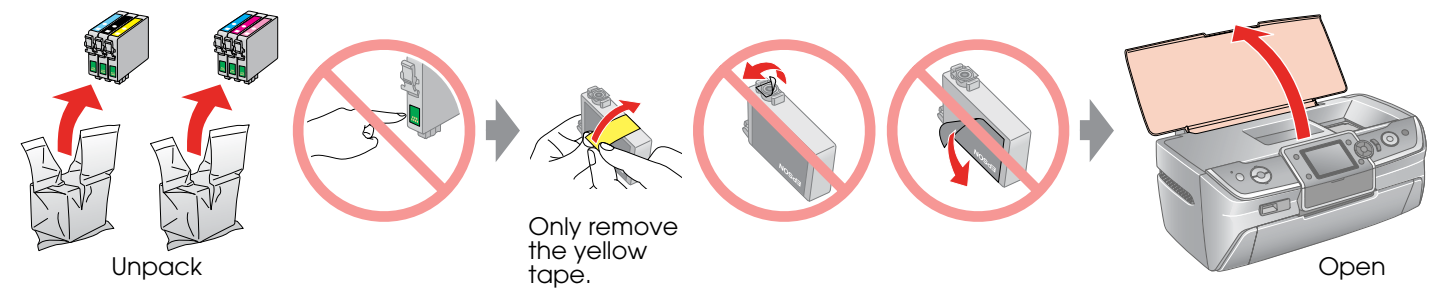


4. Selecting a Language

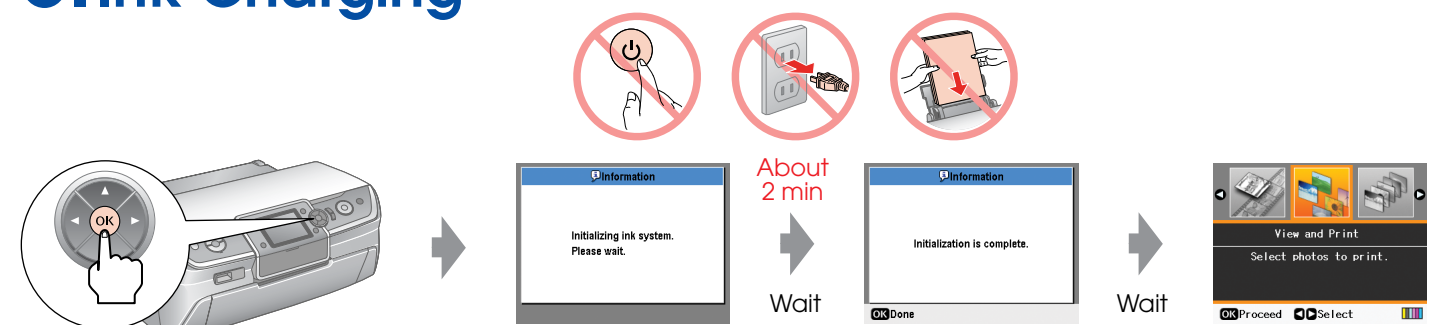


Note:
Selectable languages vary on location.

5. Installing the Ink Cartridges



6. Ink Charging

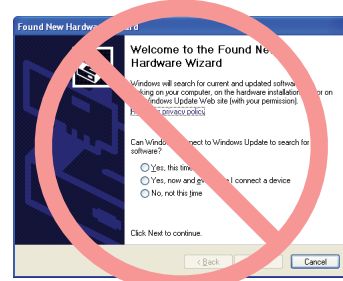
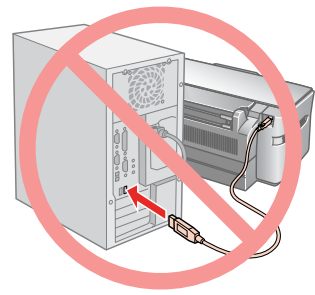


Note:
The ink cartridges first installed in your printer will be partly used to charge the print head. Subsequent ink cartridges will last for their full rated life.

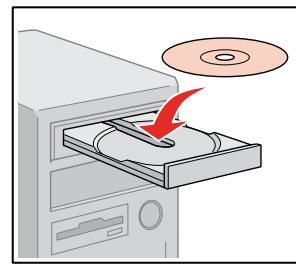


7. Installing the Software

Do not connect the USB cable until you are instructed to do so.



If this screen appears, click **Cancel**.



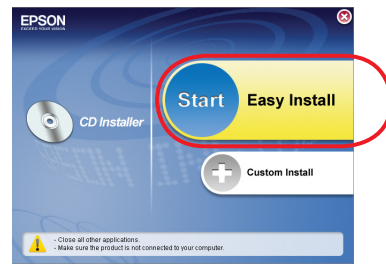
Insert

For Windows

For Mac OS X



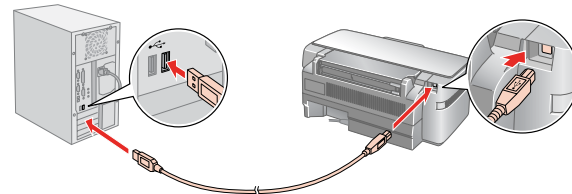
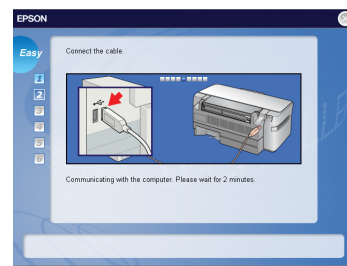
Double Click



Click

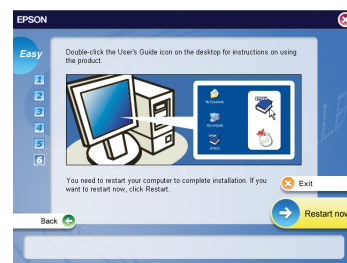
For Windows. No installation screen? → Double-click the CD-ROM icon.

Follow the instructions.



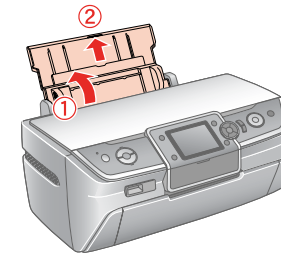
When this screen appears, connect to your PC.

Follow the instructions.

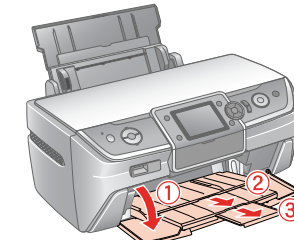


Installation complete.

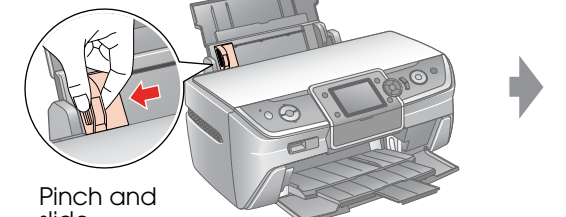
8. Loading Paper



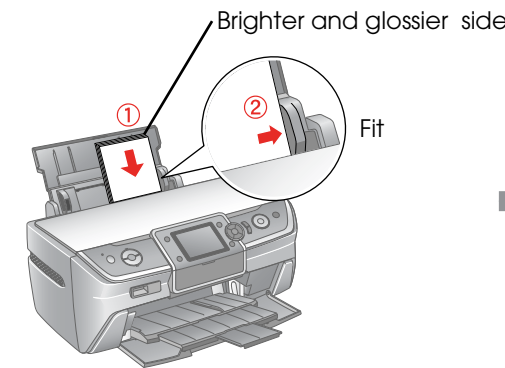
Open and pull out



Open and pull out

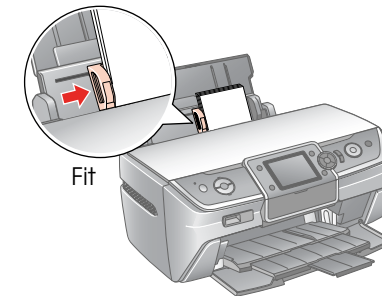


Pinch and slide

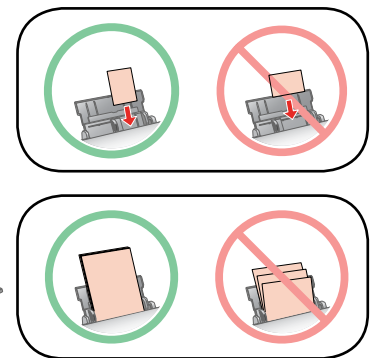


Brighter and glossier side

Fit

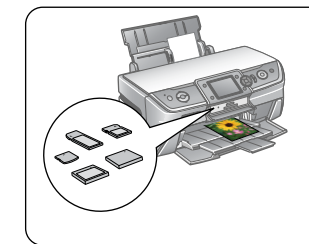


Fit

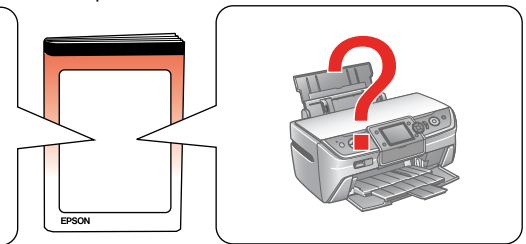


9. Getting More Information

User's Guide
-for use without
a computer-

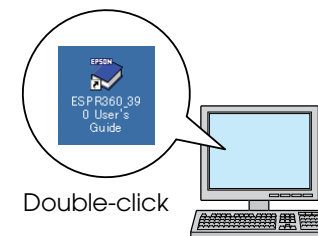


Printing

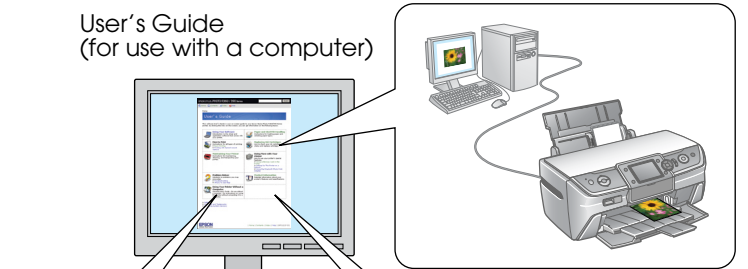


Troubleshooting

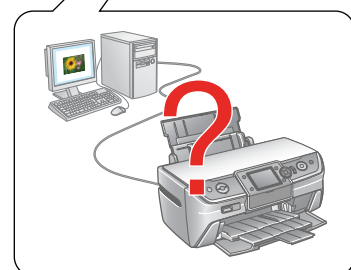
User's Guide
(for use with a computer)



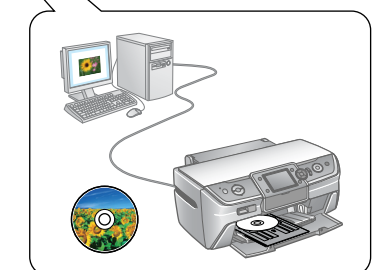
Double-click



Printing with a PC



Troubleshooting



CD/DVD label printing