

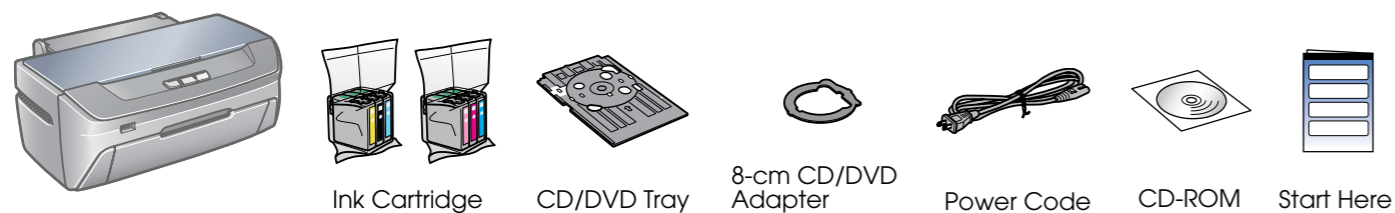
EPSON STYLUS™ PHOTO R265 / 270 Series

Start Here

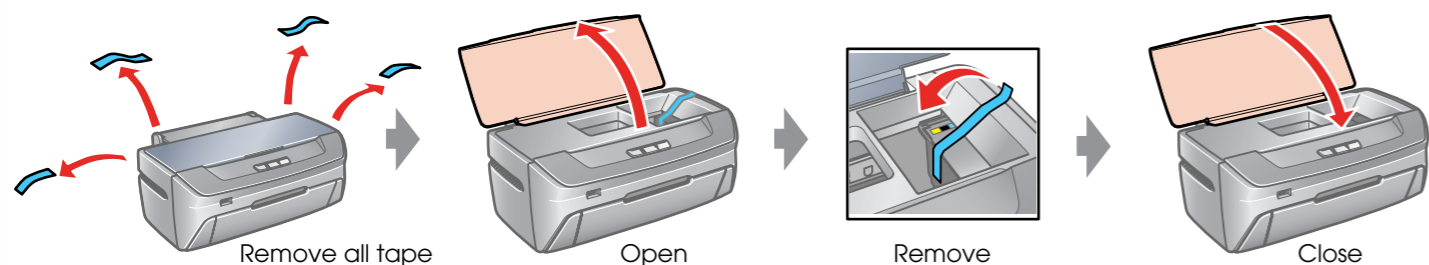
1. Unpacking

Note:

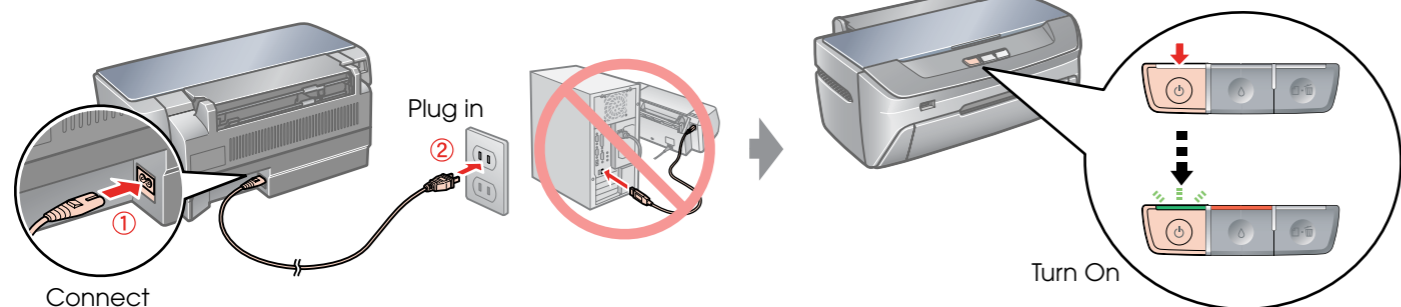
Do not open the ink cartridge package until you are ready to install it in the printer. The cartridge is vacuum packed to maintain its reliability.



2. Removing Protective Tape

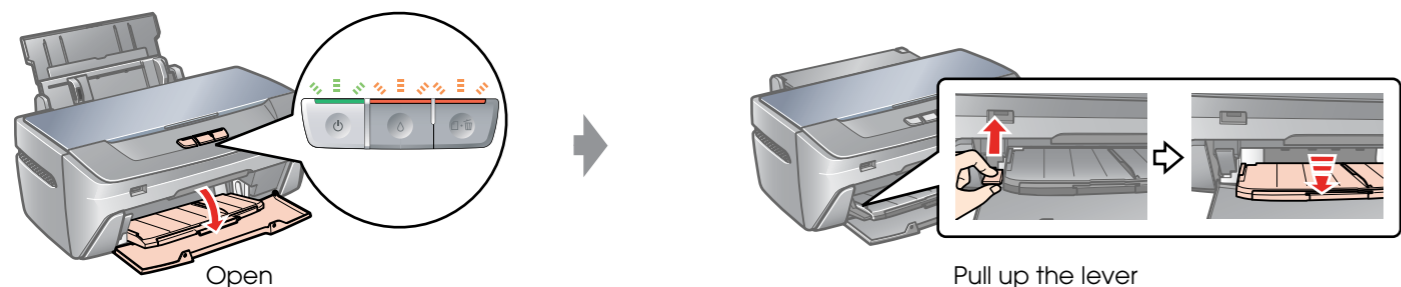


3. Turning On



Note:

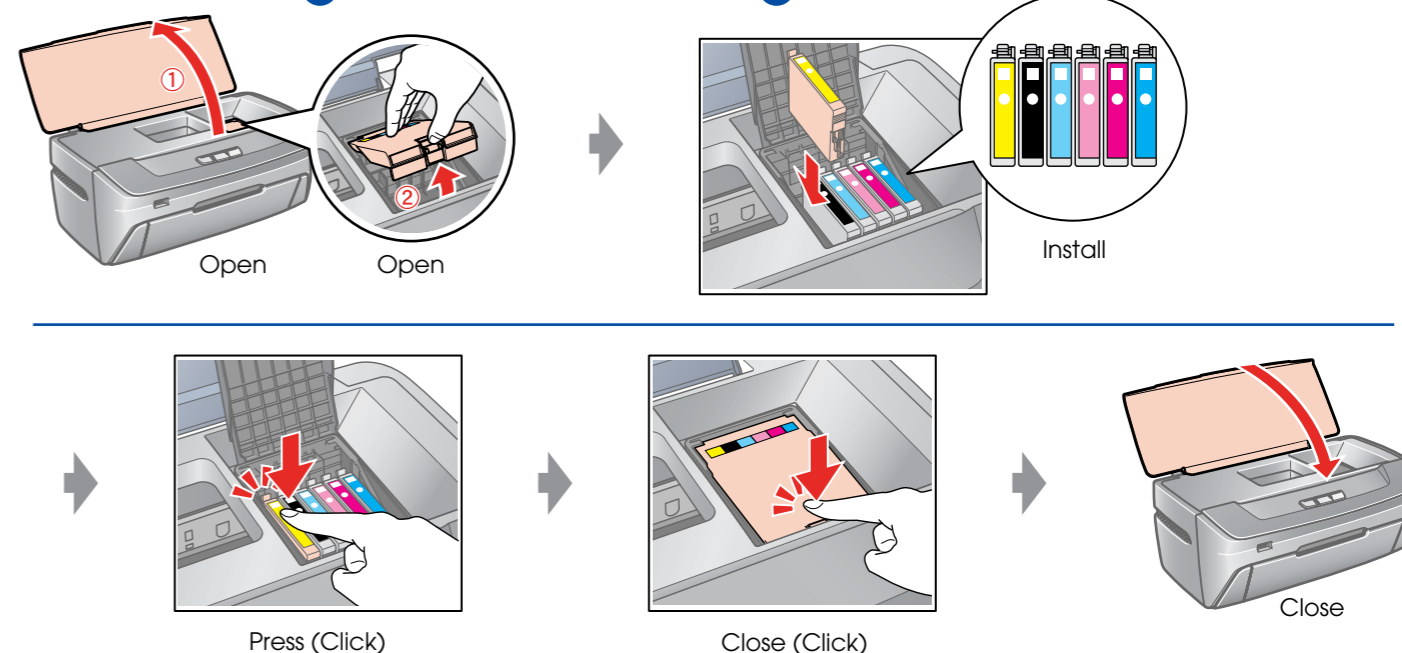
If you see the red lights flashing, do the following.



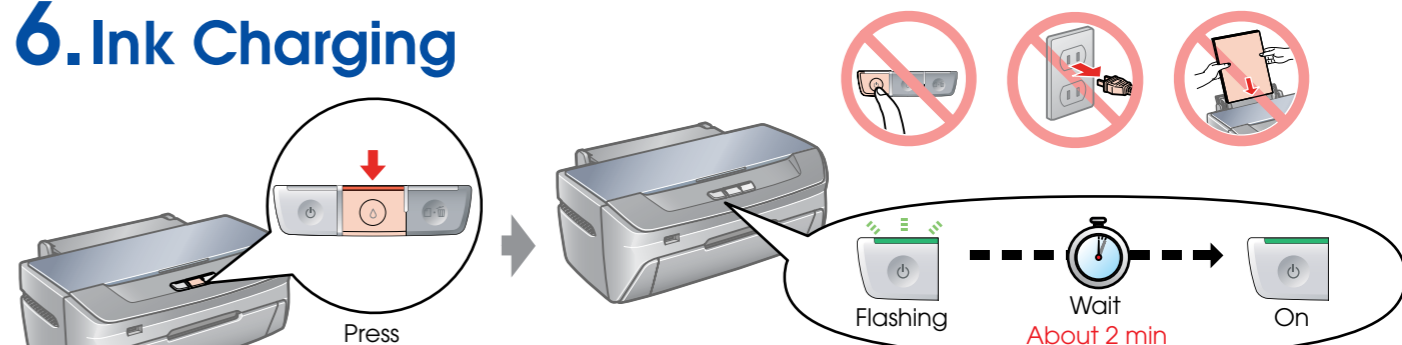
4. Preparing the Ink Cartridges



5. Installing the Ink Cartridges



6. Ink Charging



Note:

The ink cartridges first installed in your printer will be partly used to charge the print head. Subsequent ink cartridges will last for their full rated life.



410623500

Copyright © 2006 Seiko Epson Corporation. All rights reserved.
Printed in XXXXXX XX.XX-XX XXX

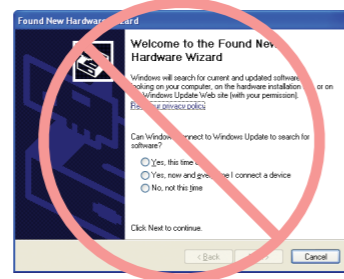
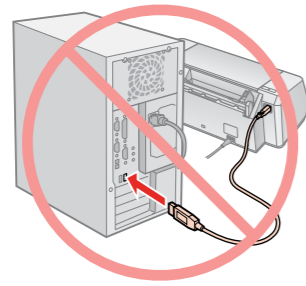


Turn over

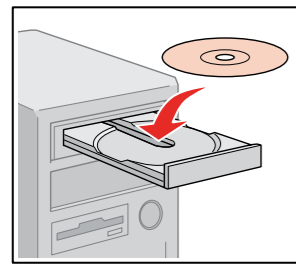


7. Installing the Software

Do not connect the USB cable until you are instructed to do so.



If this screen appears, click **Cancel**.



Insert

For Windows

For Mac OS X



Double Click



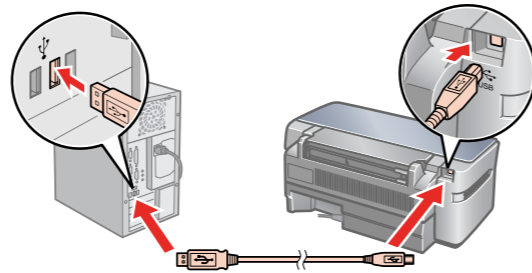
Click

For Windows. No installation screen? → Double-click the CD-ROM icon.

Follow the instructions.



When this screen appears, connect to your PC.

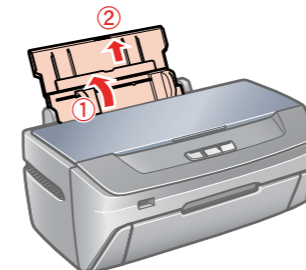


Follow the instructions.

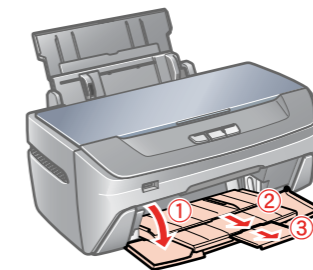


Installation complete.

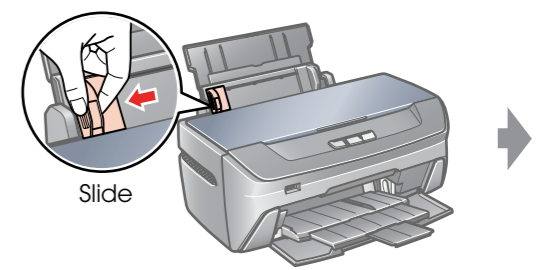
8. Loading Paper



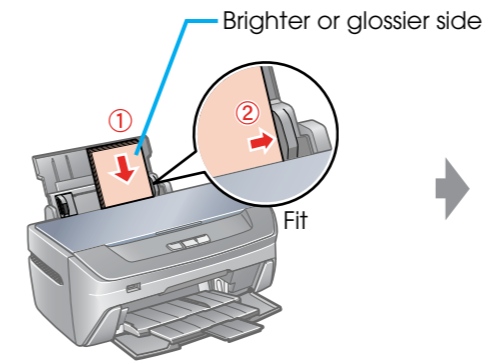
Open and pull out



Open and pull out

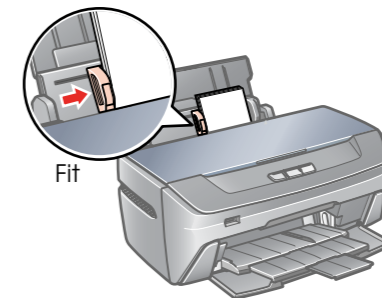


Slide

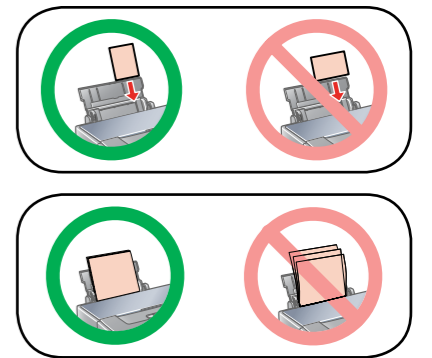


Brighter or glossier side

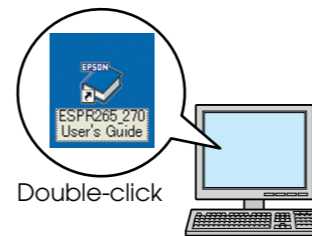
Fit



Fit

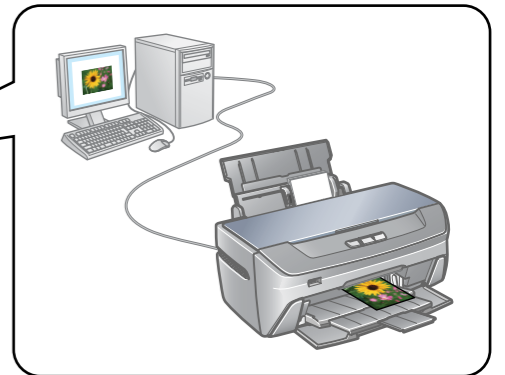


9. Getting More Information

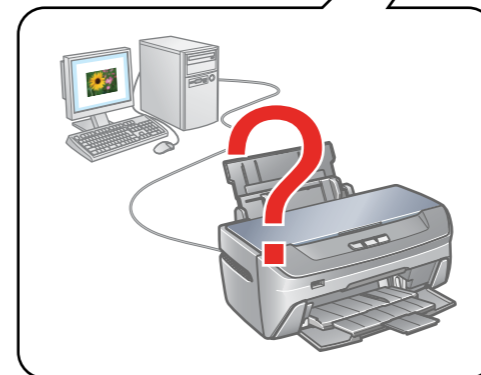


Double-click

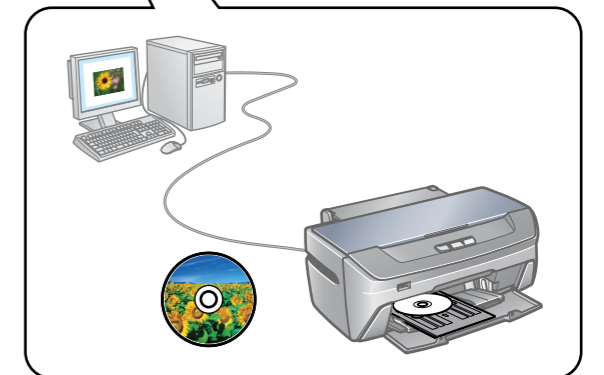
User's Guide



Printing



Troubleshooting



CD/DVD Label