

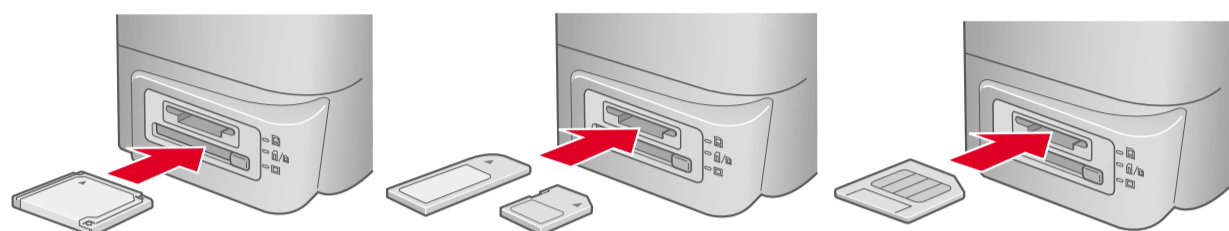
The example below demonstrates how to print an index of photos on plain paper and then a Borderless photo on 100 × 150 mm EPSON Premium Glossy Photo Paper.

For more detailed information, refer to the *Standalone Operation Guide*.

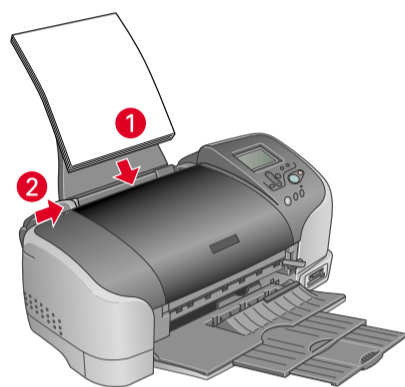
## 1 Printing an Index

Print an index of photos.

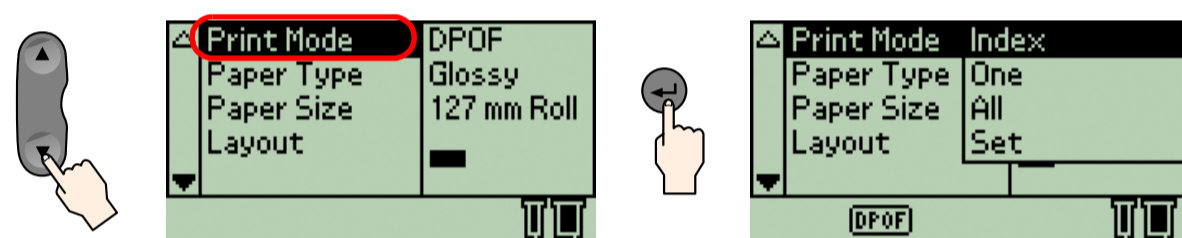
1. Insert the memory card containing your photos into the appropriate memory card slot.



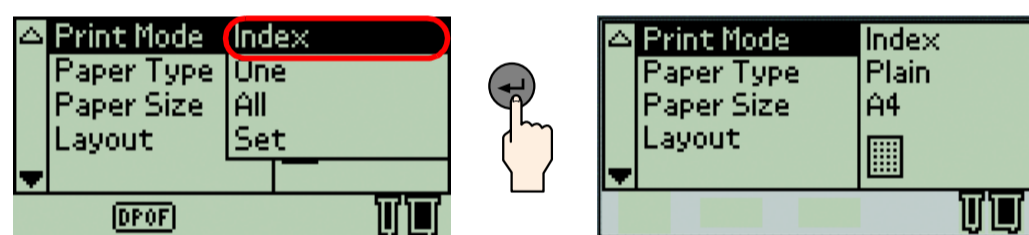
2. Load A4 size plain paper into the sheet feeder.



3. Press the ▼ button to highlight Print Mode, then press the Ⓜ Select button to open the menu.

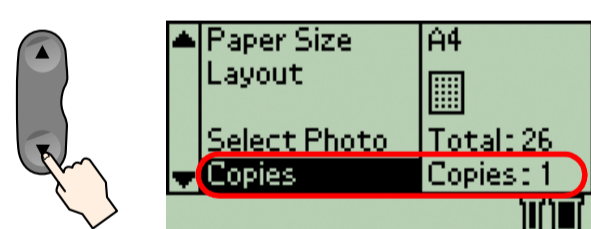


Make sure **Index** is highlighted, then press the Ⓜ Select button to close the menu.

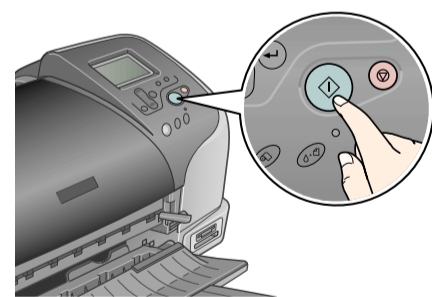


**Note:** When **Index** is selected as the Print Mode, Paper Type, Paper Size and Layout are automatically set to Plain, A4 and Index respectively.

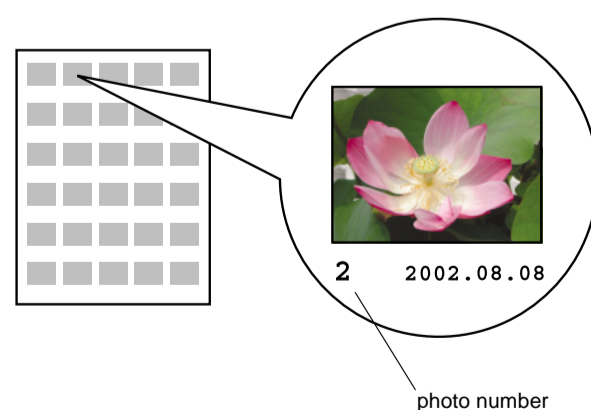
4. Make sure that **Copies:1** is indicated as the Copies setting.



5. Press the Ⓜ Print button to print the Index.



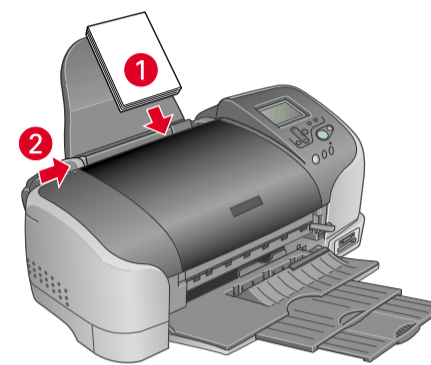
6. Look at the index and choose the photo you want to print. The photo number will be entered as the Select Photo setting in the following procedure.



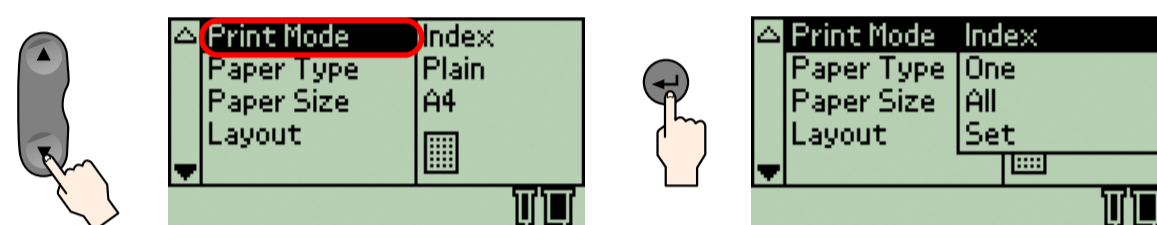
## 2 Printing a Photo

Print a photo selected from the index.

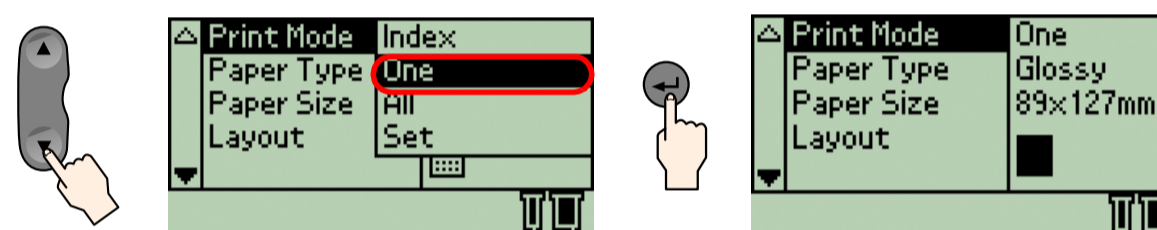
1. Load 100 × 150 mm size EPSON Premium Glossy Photo Paper into the sheet feeder with printable side up.



2. Press the ▼ button to highlight Print Mode, then press the Ⓜ Select button.

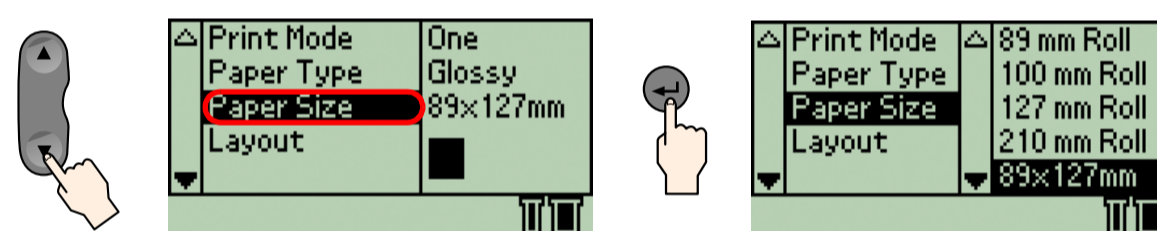


Press ▼ button to highlight One, then press Ⓜ button to close the menu.

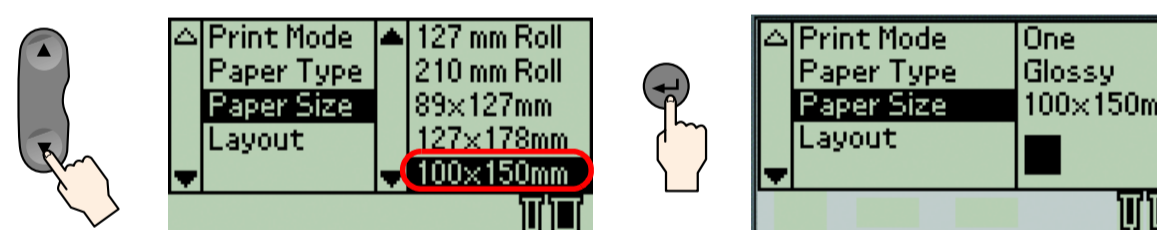


**Note:** When **One** is selected as the Print Mode, Paper Type, Paper Size and Layout are automatically set to Glossy, 89 × 127 mm and Borderless respectively.

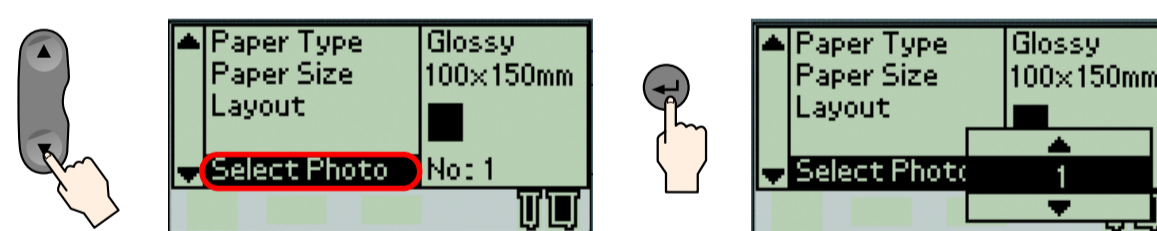
3. Press the ▼ button to highlight Paper Size, then press the Ⓜ Select button.



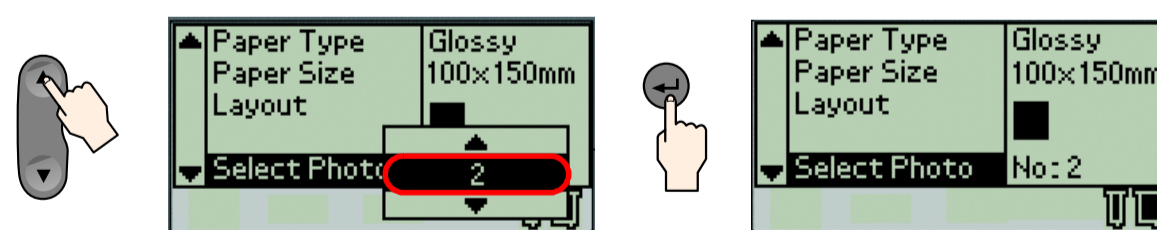
Press the ▼ button to highlight 100 mm × 150 mm, then press the Ⓜ Select button.



4. Press the ▼ button to highlight Select Photo, then press the Ⓜ Select button.



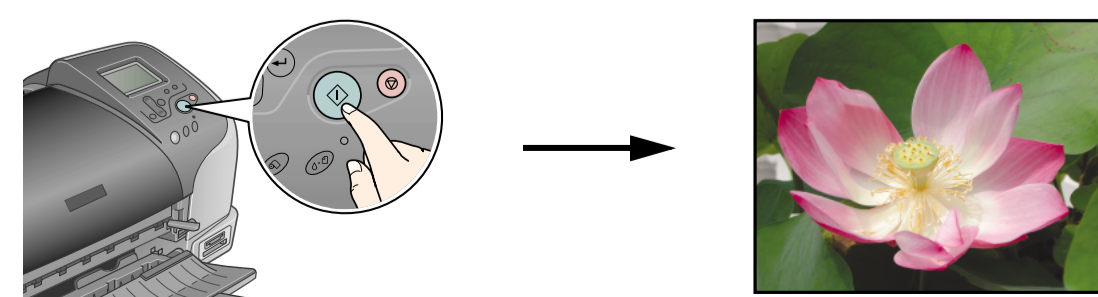
Press the ▲ button to specify the photo number that you have selected from the index, then press the Ⓜ Select button.



5. Make sure that **Copies:1** is indicated as the Copies setting.

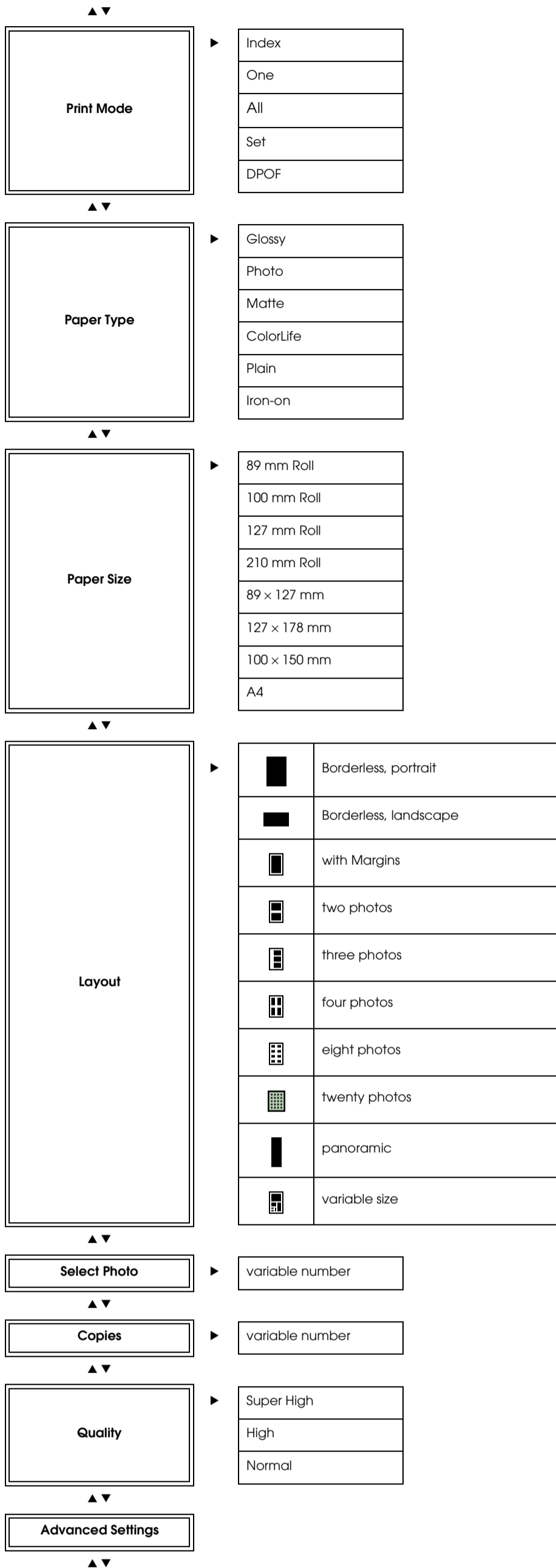


6. Press the Ⓜ Print button to print the photo.

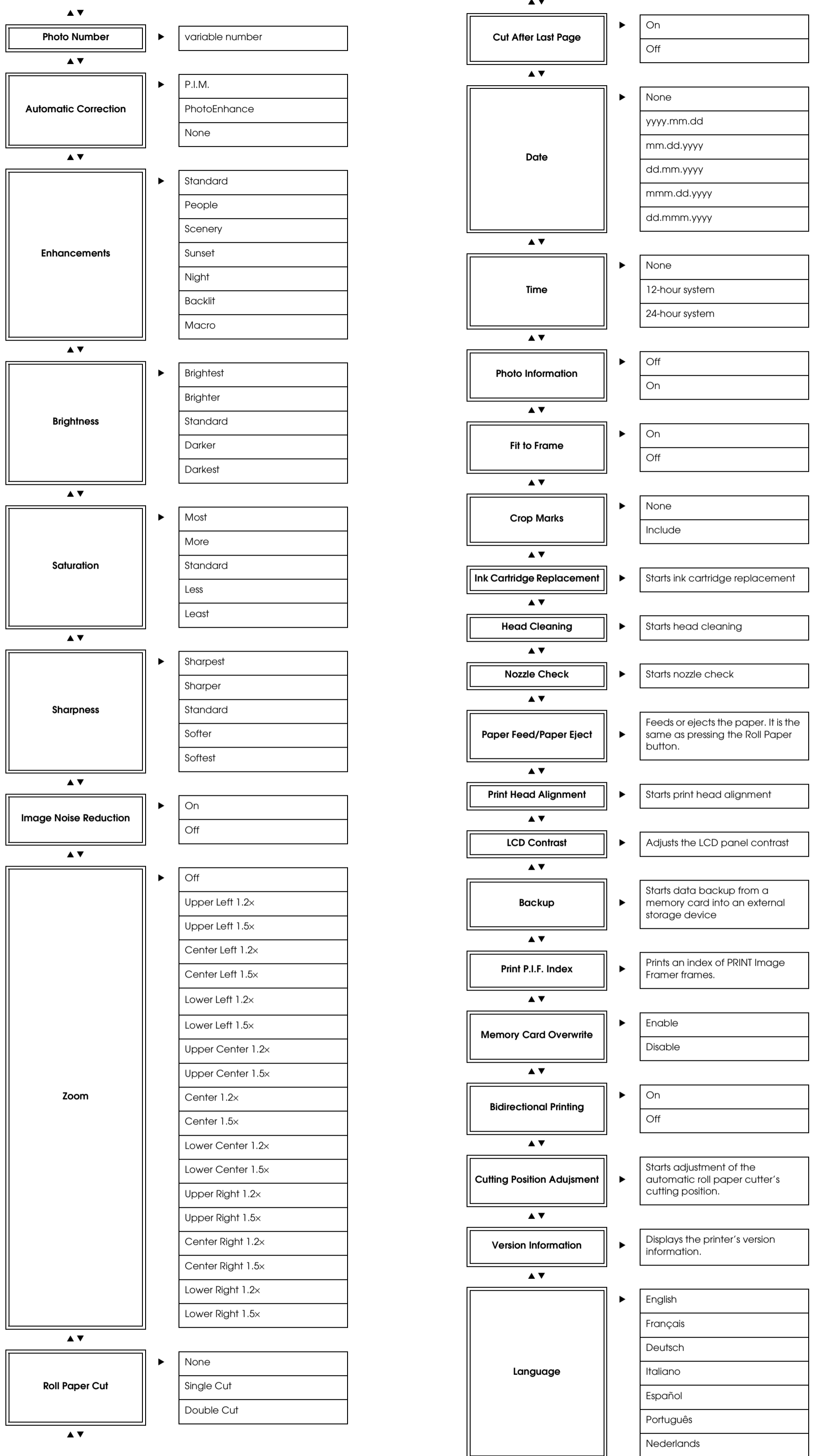


# LCD Panel Diagram

## Main Settings



## Advanced Settings



All rights reserved. No part of this publication may be reproduced, stored in a retrieval system, or transmitted in any form or by any means, electronic, mechanical, photocopying, recording, or otherwise, without the prior written permission of SEIKO EPSON CORPORATION. The information contained herein is designed only for use with this EPSON printer. EPSON is not responsible for any use of this information as applied to other printers. Neither SEIKO EPSON CORPORATION nor its affiliates shall be liable to the purchaser of this product or third parties for damages, losses, costs, or expenses incurred by the purchaser or third parties as a result of: accident, misuse, or abuse of this product or unauthorized modifications, repairs, or alterations to this product, or (excluding the U.S.) failure to strictly comply with SEIKO EPSON CORPORATION's operating and maintenance instructions.

SEIKO EPSON CORPORATION shall not be liable for any damages or problems arising from the use of any options or any consumable products other than those designated as Original EPSON Products or EPSON Approved Products by SEIKO EPSON CORPORATION. SEIKO EPSON CORPORATION shall not be held liable for any damage resulting from electromagnetic interference that occurs from the use of any interface cables other than those designated as EPSON Approved Products by SEIKO EPSON CORPORATION. EPSON is a registered trademark and EPSON Stylus is a trademark of SEIKO EPSON CORPORATION.

Microsoft and Windows are registered trademarks of Microsoft Corporation.  
Apple and Macintosh are registered trademarks of Apple Computer, Inc.

**General Notice:** Other product names used herein are for identification purposes only and may be trademarks of their respective owners. EPSON disclaims any and all rights in those marks.