

# Setup

English

4040265-00  
xxx

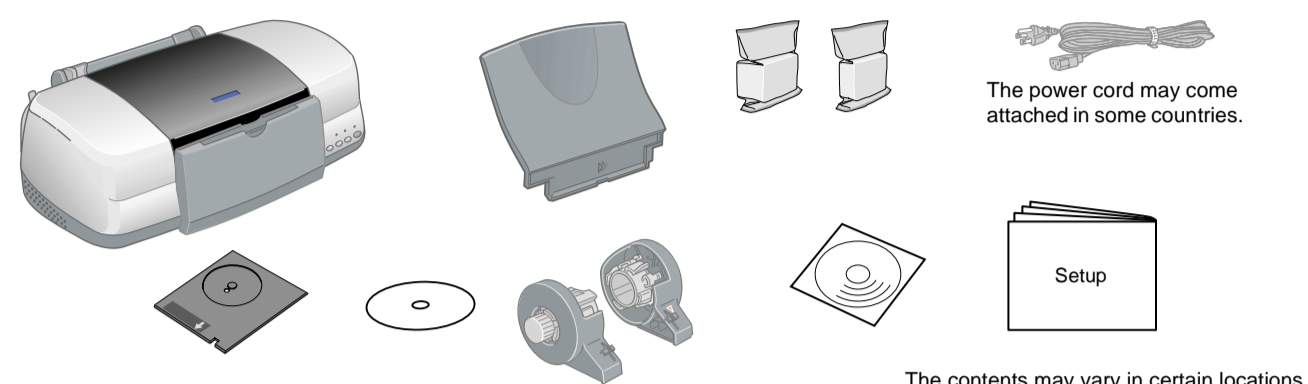
Cautions and Notes

**Caution:** must be observed to avoid damage to your equipment.

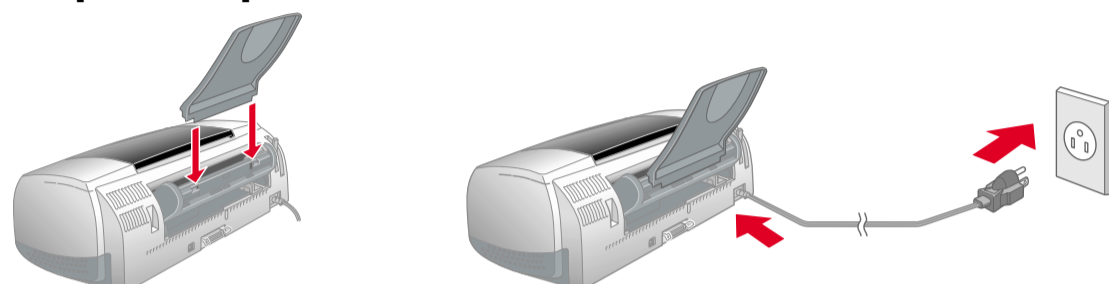
**Notes** contain important information and useful tips on the operation of your printer.

## 1 Unpacking

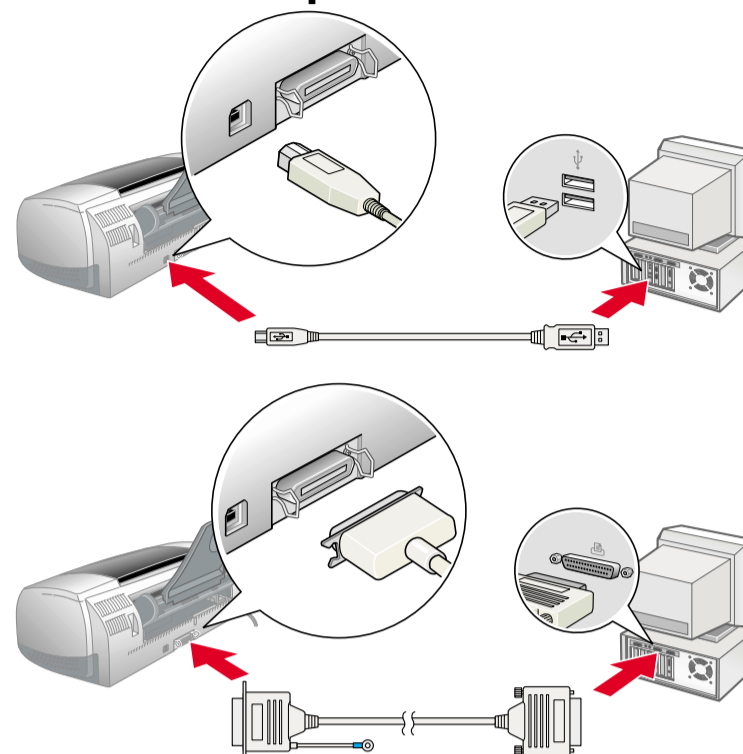
### 1. Unpack the printer.



### 2. Attach the printer parts.



### 3. Connect the printer.



## 2 Setting up

### Installing the Printer Software

**Note:**

For installing the Photo Print Software, refer to the Photo Print Software Setup in the online Reference Guide.

#### For Windows

1. Make sure that the printer is off.
2. Insert the printer software CD in the CD-ROM drive.  
If the Installer dialog box does not appear, double-click **SETUP.EXE** on the CD-ROM.
3. Select **Install Software**, and then click **Next**.
4. Follow the on-screen instructions. After the printer software has been installed, the on-screen instructions continue with the installation of the ink cartridges.

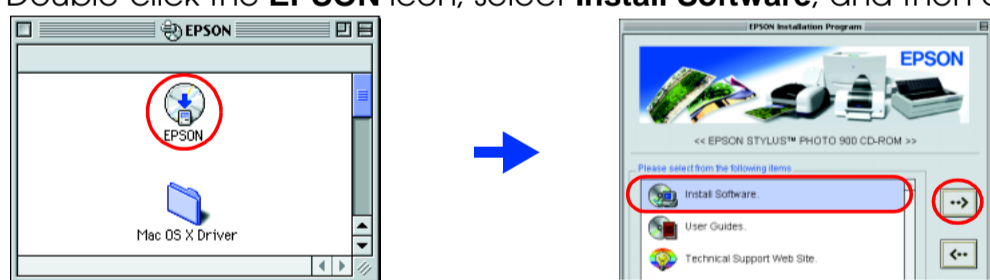


#### For Macintosh

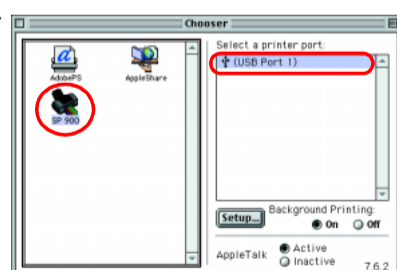
- Caution:** Turn off all virus protection programs before you install the printer software.

#### For users of Mac OS 8.1 or later (except Mac OS X)

1. Make sure that the printer is off.
2. Insert the printer software CD in the CD-ROM drive.
3. Double-click the **EPSON** icon, select **Install Software**, and then click **Next**.



4. Follow the on-screen instructions to install the printer software.
5. Press the **⏻** power button to turn on the printer. The print head moves to the ink cartridge installation position.
6. Choose **Chooser** from the Apple menu, and then select the icon for your printer and the port that your printer is connected to.



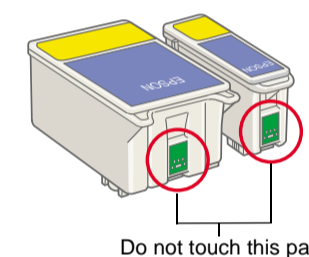
#### For users of Mac OS X

1. Make sure that the printer is off.
2. Insert the printer software CD in the CD-ROM drive.
3. Double-click the **Mac OS X Driver** folder, and then double-click the **SP900.pkg** icon inside it.  
If the Authorization window opens, click the key icon, enter the administrator's name and password, click **OK**, and then click **Continue**.
4. Follow the on-screen instructions to install the printer software.
5. Press the **⏻** power button to turn on the printer. The print head moves to the ink cartridge installation position.
6. Follow the instruction below to select your printer:  
Double-click **Macintosh HD**. → Double-click the **Applications** folder. → Double-click the **Utilities** folder. → Double-click the **Print Center** icon. → Click **Add Printer**. → Select **EPSON USB**. → Select your printer. → Click **Add**.

### Installing the Ink Cartridges

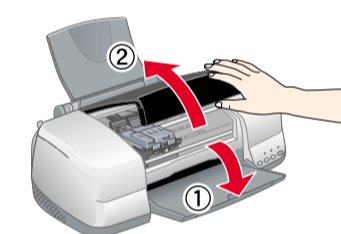
1. Remove the new ink cartridges from their protective bag.

- Caution:**
  - Do not shake the ink cartridge; this can cause leakage.
  - Do not remove the blue portion of the tape seal from the top of the cartridges.
  - Do not remove the tape seals from the bottom of the cartridges.



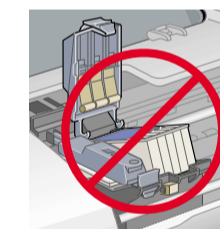
2. Lower the output tray, and then open the printer cover.

- Caution:** Do not move the print head by hand, as this may damage the printer.



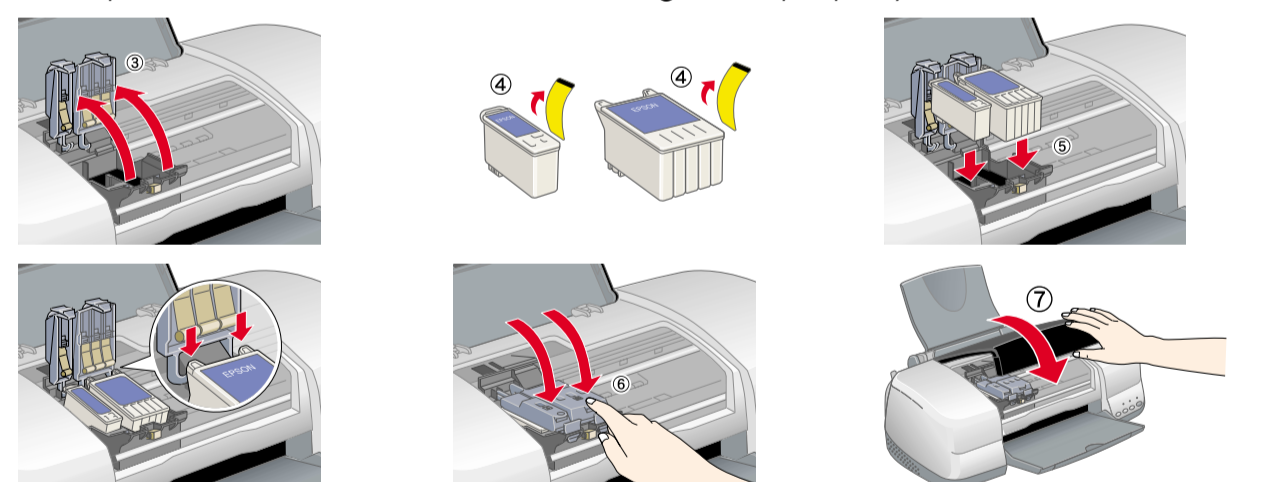
3. Install the ink cartridges as shown in the illustration below.

- Caution:** Make sure that the ink cartridge tabs are not under the tabs protruding from the base of the opened ink cartridge clamps, as this can damage the clamps.



**Note:**

The printer will not work unless all cartridges are properly installed.



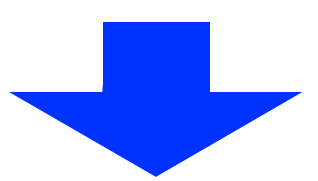
4. Press the **⏻** ink button. The printer moves the print head and begins charging the ink delivery system. This process takes about **one and half minutes**. During the ink charging process, the **⏻** power light flashes and the printer produces a variety of mechanical sounds. This is normal.

- Caution:**
  - Do not turn the power off during the ink charging process.
  - Do not load paper until ink charging is complete.

**Note:**

- If the ink end error occurs after the print head moves to its home position, the ink cartridge may not be installed properly. Press the **⏻** ink button again, and reinstall the ink cartridge so that it clicks into place.
- In order to produce high quality printouts, the print head in your printer must be fully charged with ink during the initial setup. This process consumes ink from the ink cartridges packed with your printer. Replacement cartridges will last for their full rated life.

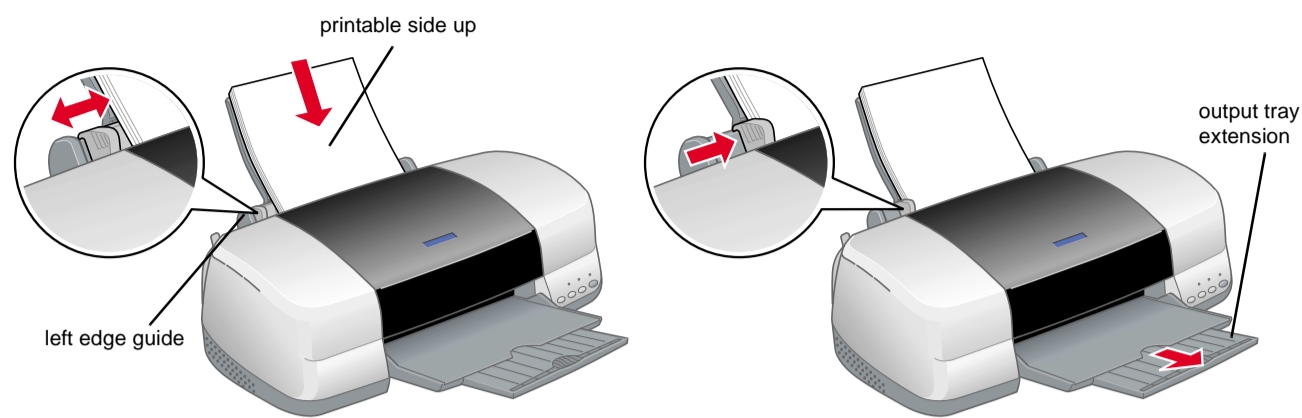
5. When the ink charging process is finished, the **⏻** power light stops flashing and remains on.





# 3 Checking the Printer

## Loading Paper



## Your printer is now ready to use.

See "Printing Basics" in the online *Reference Guide* for detailed instructions when printing for the first time.

The online *Reference Guide* also contains the following information:

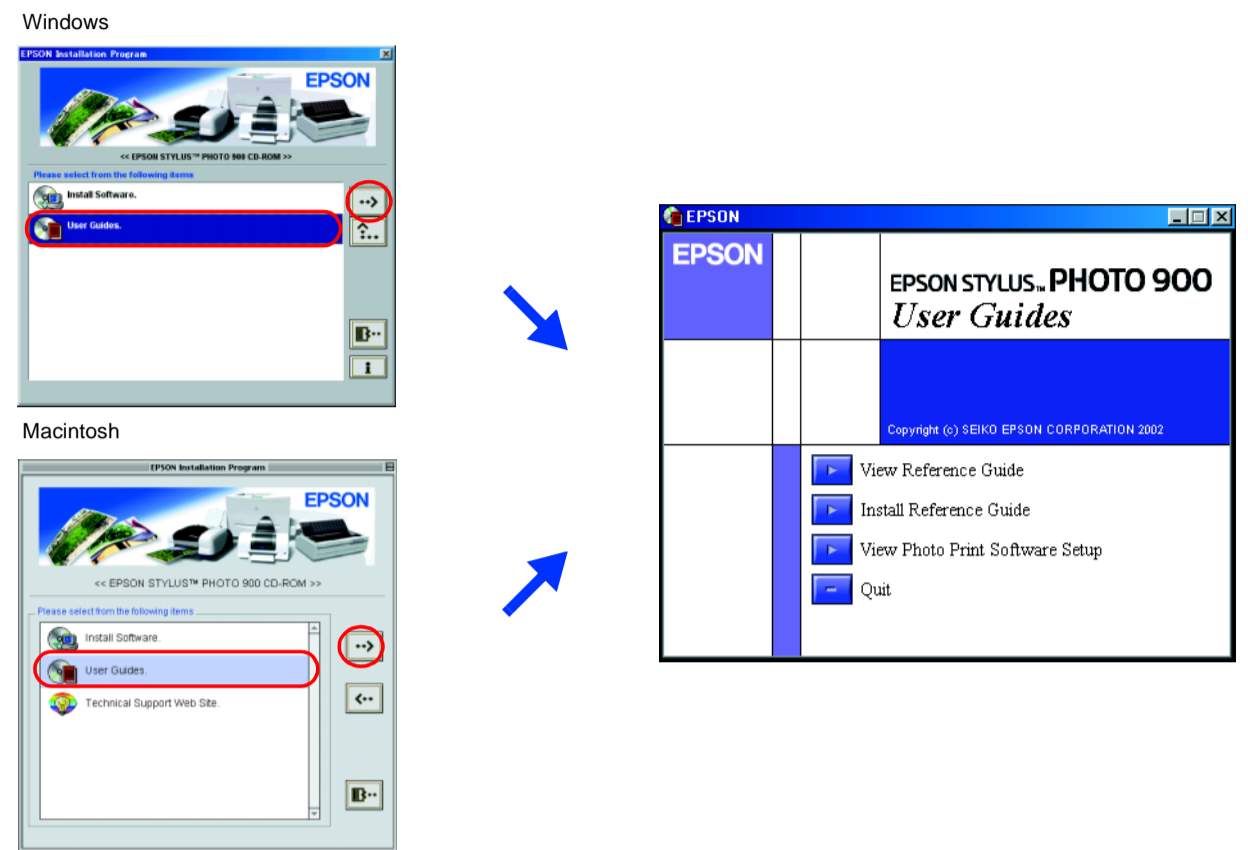
- Various Printing Options
- Printer Software Functions
- How To
- Problem Solver
- Product Information
- Safety Instructions

Refer to the online *Reference Guide* for more details.

## Accessing the Online Reference Guide

Follow these steps to access the online *Reference Guide*.

1. Insert the printer software CD in the CD-ROM drive.
2. For Windows, select **User Guides** in the dialog box, and then click **→**.  
For Macintosh, double-click the **EPSON** icon, select **User Guides**, and then click **→**.



In Mac OS X, the dialog box does not appear when the printer software CD is inserted. To access the online *Reference Guide*, double-click **English\User Guides\REF\_G\INDEX.HTM**.

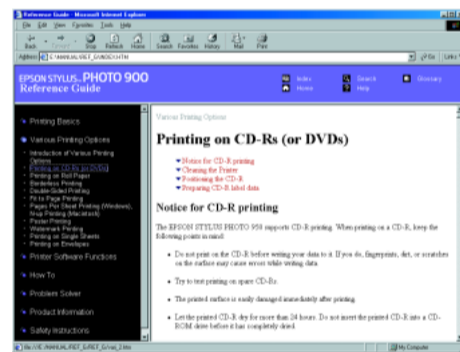
## Printing on CD/DVD

### Introduction

You can create attractive CD/DVD labels like the sample shown here.



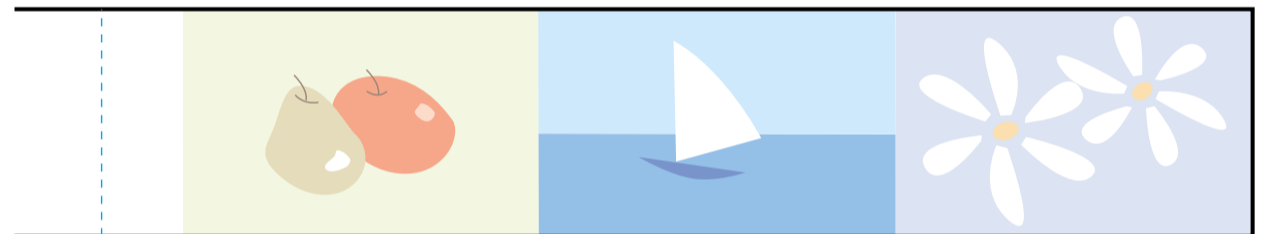
For details on CD/DVD printing, see the online *Reference Guide*.



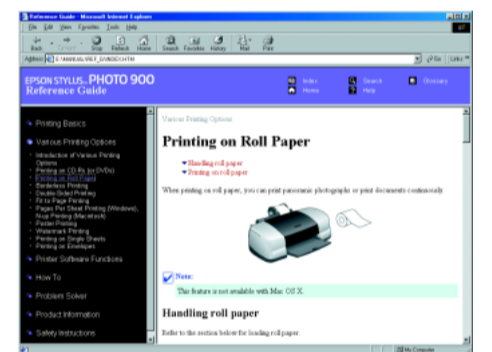
## Printing on Roll Paper

### Introduction

Roll paper printing is fun and enables you to print banners like the sample shown.



For details on roll paper printing, see the online *Reference Guide*.



## Problem Solver

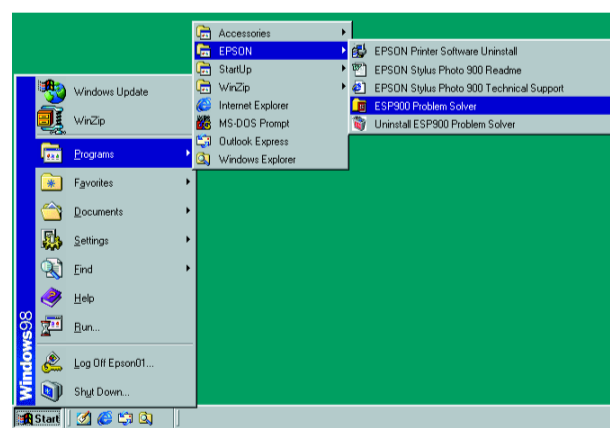
### Online problem-solving

The Problem Solver and EPSON's Technical Support Web site provide you with tips to help solve problems. Access the Problem Solver or Technical Support in the following ways:

#### For Windows

- Click **Start**, point to **Programs** (for users of Windows Me, 98, 95, and 2000) or **All Programs** (for users of Windows XP), then to **EPSON**, and then click **ESP900 Problem Solver**.
- You can also click **Technical Support** in the Status Monitor 3 dialog box or on the Main menu of the printer software.

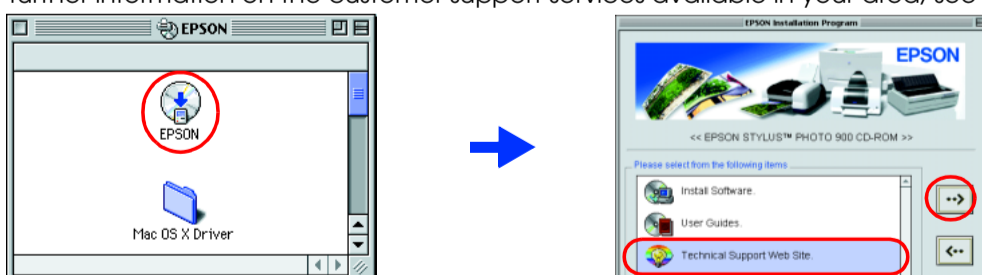
For further information on the customer support services available in your area, see the online *Reference Guide*.



#### For users of Mac OS 8.1 or later (except Mac OS X)

1. Insert the CD in the CD-ROM drive.
2. Double-click the **EPSON** icon.
3. Select **Technical Support Web Site**, and then click **→**.

For further information on the customer support services available in your area, see the online *Reference Guide*.



#### For users of Mac OS X

Access the Web site at:  
<http://support.epson.net/StylusPhoto900/>

### Error indicators

You can identify many common problems using the lights on the printer's control panel. Use the following table of light patterns to diagnose the problem, and then follow the recommended corrective measures.

Lights	Problem and solution
● □	<b>Paper out</b> No paper is loaded in the printer. Load paper in the sheet feeder, and then press the □ paper button. The printer resumes printing and the light goes out.
● □	<b>Paper jam</b> Paper has jammed in the printer. Press the □ paper button to eject the jammed paper. If the error does not clear, open the printer cover and remove all of the paper inside, including any torn pieces. Then, reload the paper in the sheet feeder and press the □ paper button to resume printing.
● ∆	<b>Ink low</b> The black or color ink cartridge is nearly empty. Obtain a replacement black or color ink cartridge. To determine which cartridge is nearly empty, check the ink levels using EPSON Status Monitor 3 (Windows) or EPSON StatusMonitor (Macintosh).
● ∆	<b>Ink out</b> An ink cartridge is empty or not installed. Replace the black or color ink cartridge with a new one.
● ∆	<b>Wrong cartridge</b> The currently installed ink cartridge cannot be used with this printer. Replace the incompatible cartridge with an appropriate black or color ink cartridge.
● ∆	<b>Incorrectly installed ink cartridge</b> An ink cartridge is not installed correctly. If the print head is at the home position, press the ∆ ink button to move the print head to the ink cartridge replacement position. Remove and reinsert the ink cartridge. Then, continue with the ink cartridge installation. If the print head is at the ink cartridge replacement position, remove and reinsert the ink cartridge. Then, continue with the ink cartridge installation.
○ □	<b>Carriage error</b> The print head carriage is obstructed by jammed paper or other foreign material and cannot return to the home position. Turn off the printer. Open the printer cover and remove any paper or other obstructions from the paper path by hand. Then, turn the printer back on. If the error does not clear, contact your dealer.
○ □	<b>Unknown printer error</b> An unknown printer error has occurred. Turn off the printer and contact your dealer.

● ● = on, ○ = off, ● ● = flashing  
Black ink cartridge T007/Color ink cartridge T009

All rights reserved. No part of this publication may be reproduced, stored in a retrieval system, or transmitted in any form or by any means, electronic, mechanical, photocopying, recording, or otherwise, without the prior written permission of SEIKO EPSON CORPORATION. The information contained herein is designed only for use with this EPSON printer. EPSON is not responsible for any use of this information as applied to other printers. Neither SEIKO EPSON CORPORATION nor its affiliates shall be liable to the purchaser of this product or third parties for damages, losses, costs, or expenses incurred by the purchaser or third parties as a result of accident, misuse, or abuse of this product or unauthorized modifications, repairs, or alterations to this product, or (excluding the U.S.) failure to strictly comply with SEIKO EPSON CORPORATION's operating and maintenance instructions.

SEIKO EPSON CORPORATION shall not be liable for any damages or problems arising from the use of any options or any consumable products other than those designated as Original EPSON Products or EPSON Approved Products by SEIKO EPSON CORPORATION. SEIKO EPSON CORPORATION shall not be held liable for any damage resulting from electromagnetic interference that occurs from the use of any interface cables other than those designated as EPSON Approved Products by SEIKO EPSON CORPORATION. EPSON is a registered trademark and EPSON Stylus is a trademark of SEIKO EPSON CORPORATION.

Part of the photo data stored on the Printer Software CD-ROM is licensed from Design Exchange Co., Ltd. Copyright © 2000 Design Exchange Co., Ltd. All rights reserved. Microsoft and Windows are registered trademarks of Microsoft Corporation. Apple and Macintosh are registered trademarks of Apple Computer, Inc. General Notice: Other product names used herein are for identification purposes only and may be trademarks of their respective owners. EPSON disclaims any and all rights in those marks.