

Setting Up the Printer Hardware

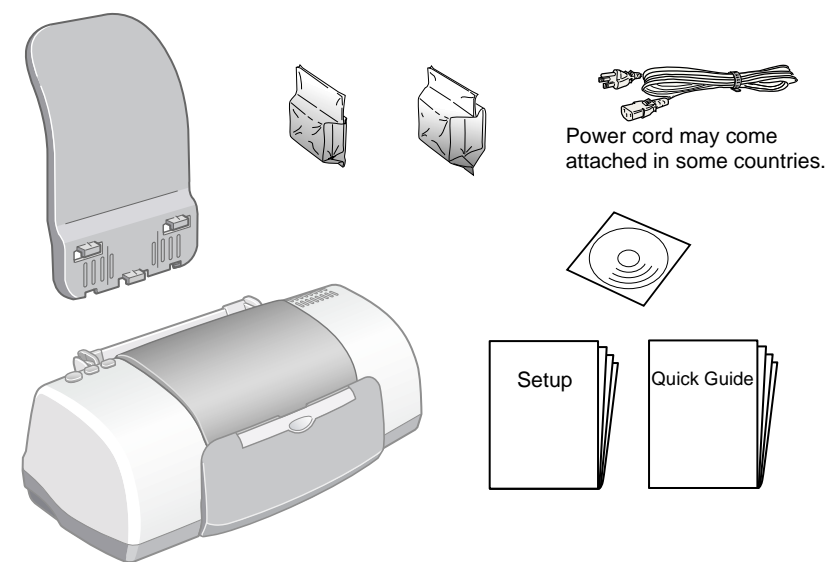
Warnings, Cautions, and Notes

Warnings must be followed carefully to avoid bodily injury.

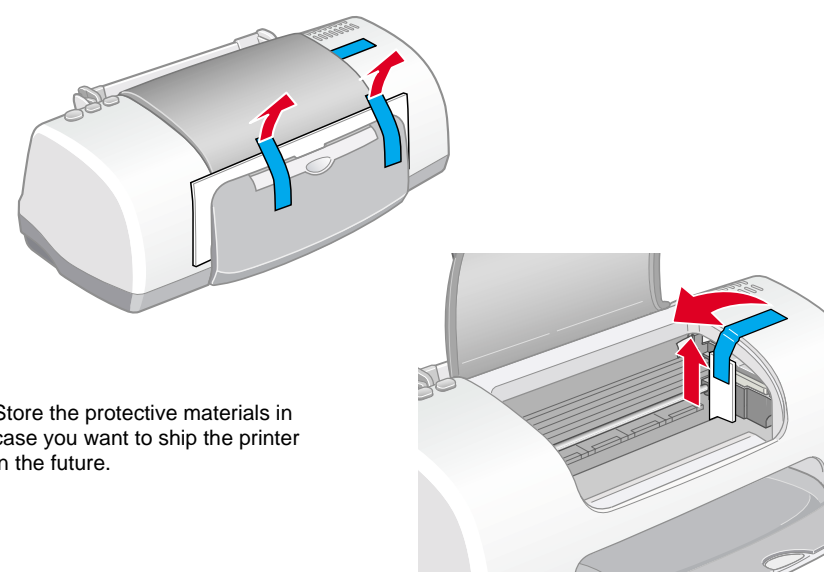
Cautions must be observed to avoid damage to your equipment.

Notes contain important information and useful tips on the operation of your printer.

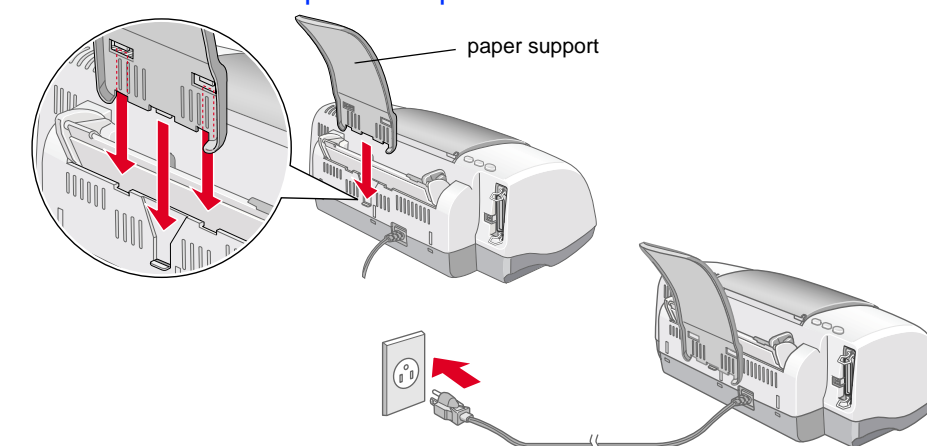
1. Unpack



2. Remove protective materials



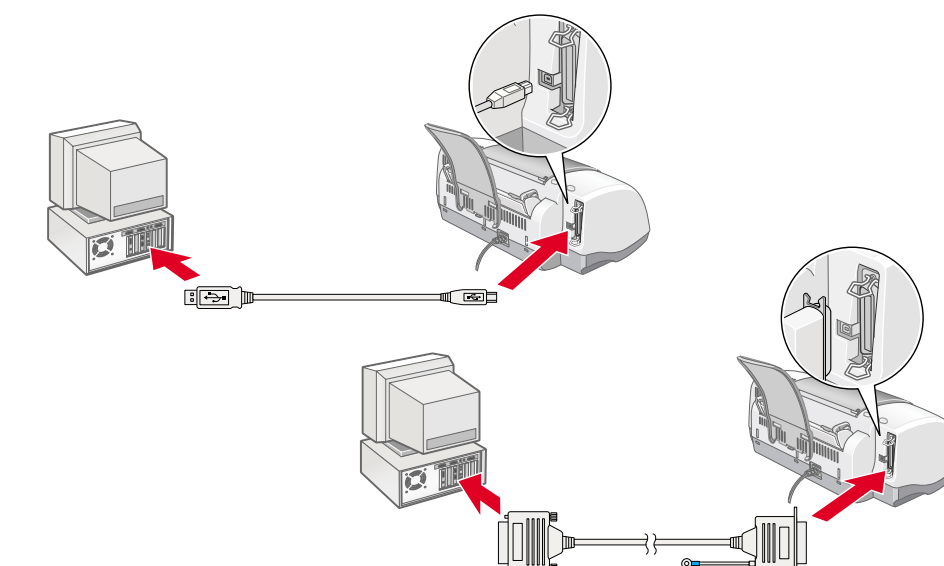
3. Attach the printer parts



- Caution:**
- If the printer comes on when you plug in the power cord, turn off the printer by pressing the power button.
 - Do not load the paper until the ink is charged. Paper may be loaded improperly.

4. Connect the printer

Connect the printer cable to the ports on the computer and the printer.



Installing the Printer Software and the Ink Cartridges

For Windows

- Make sure that printer is off, then turn on your computer.
- Insert the printer software CD in the CD-ROM drive. If the Installer dialog box does not appear, double-click **SETUP.EXE** in the CD-ROM.
- Select **Install Printer Driver/Utility**, and click **Next**.
- Click **OK** in the dialog box that appears.
- When a message appears prompting you to turn on the printer, press the power button. The print head moves to the ink cartridge installation position and the Setup utility starts automatically.



Caution: Do not move the print head by hand, as this may damage the printer.

- Follow the Setup utility's on-screen instructions to install the ink cartridges.
- Note:** If the Setup utility does not start, follow the instructions in the Macintosh section of this sheet, beginning from "3. Install the ink cartridges."

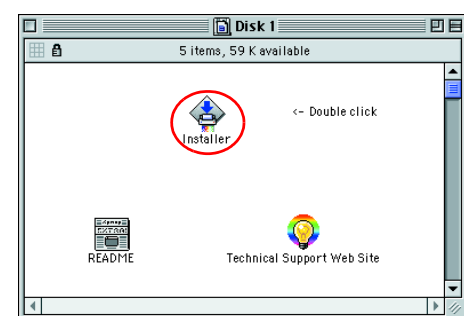
When the ink cartridge installation is complete, proceed to "Load paper and check the print head nozzles" on this sheet.

For Macintosh

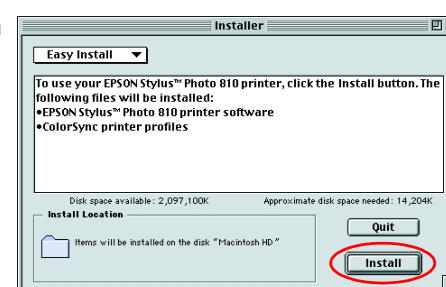
1. Install the printer software

Caution: Turn off all virus protection programs before you install the printer software.

- Make sure that printer is off, then turn on your Macintosh and insert the software CD in the CD-ROM drive.
- Double-click the **Install Software** folder, then double-click the **Installer** icon inside it.
- Click **Continue**.

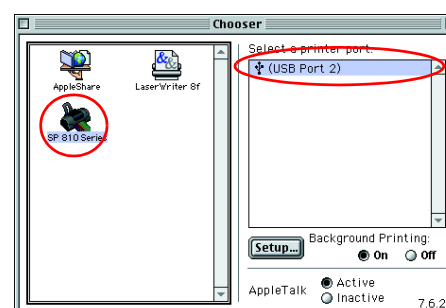


- Make sure that the Install Location box displays the correct drive, then click **Install**.
- Follow the on-screen instructions to install the printer software.



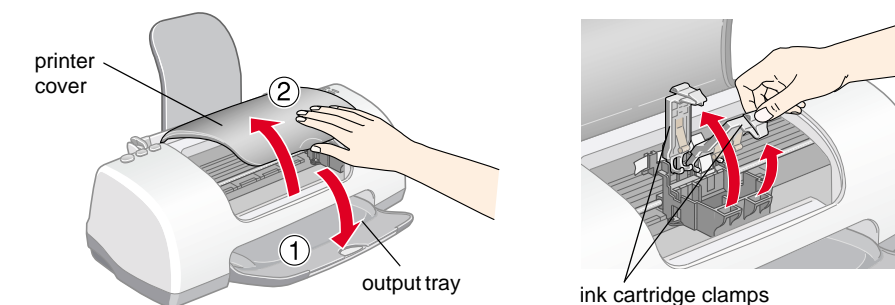
2. Select the printer

- After you have installed the printer software, you need to select your printer.
- Press the power button to turn on the printer. The print head moves to ink cartridge installation position.
 - Choose **Chooser** from the Apple menu. Then, select the icon for your printer and the port that your printer is connected to.
 - Close the Chooser.



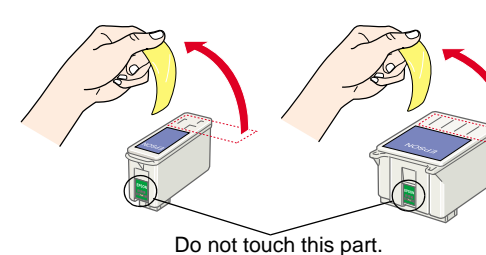
3. Install the ink cartridges

- Open the output tray and the printer cover, then lift up the ink cartridge clamps, as shown in the illustrations.

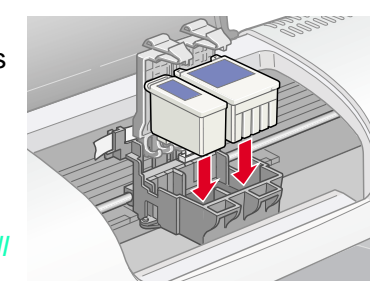


Caution: Do not move the print head by hand, as this may damage the printer.

- Remove only the yellow tape from the new ink cartridges.

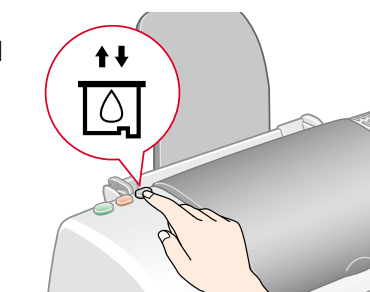


- Position the tabs on each ink cartridge so that they are resting on top of the tabs protruding from the base of the ink cartridge clamps. Do not apply excessive force to the cartridges.



Note: Install both ink cartridges. The printer will not work with only one cartridge.

- Lower the ink cartridge clamps until they lock into place.
- Close the printer cover.
- Press the ink cartridge replacement button. The printer moves the print head and begins charging the ink delivery system. This process takes about one and a half minutes. While the ink is charging, the power light flashes and the printer produces a variety of mechanical sounds. These sounds are normal.

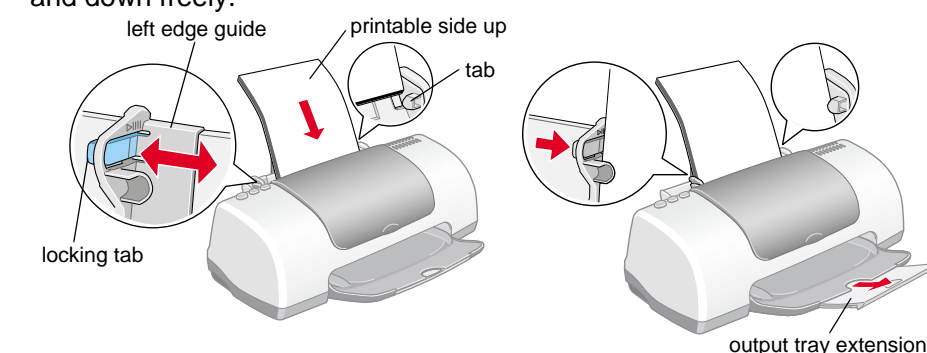


Caution: Do not turn the power off during the ink charging process. Do not load paper until ink charging is complete.

When the ink charging process is finished, the power light stops flashing and remains on. When ink cartridge installation is complete, proceed to "Load paper and check the print head nozzles" on this sheet.

Load paper and check the print head nozzles

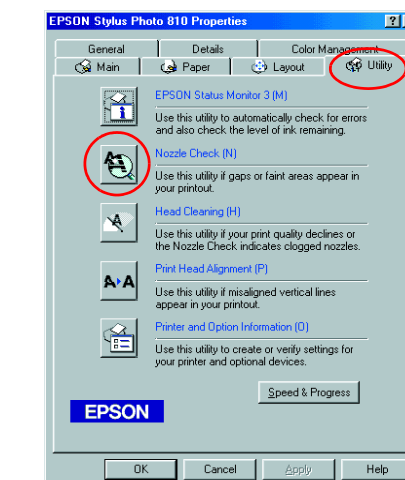
Before checking the print head nozzles, you need to load paper as shown below. When loading the paper, make sure that the paper stack fits under the tabs inside the edge guides and does not exceed the loading limit indicated by the arrow mark on the left edge guide. To adjust the left edge guide, hold down the locking tab and slide the guide against the paper stack. Make sure that the position of the edge guide allows the paper to move up and down freely.



Once paper is loaded, follow these steps to check the print head nozzles.

For Windows users

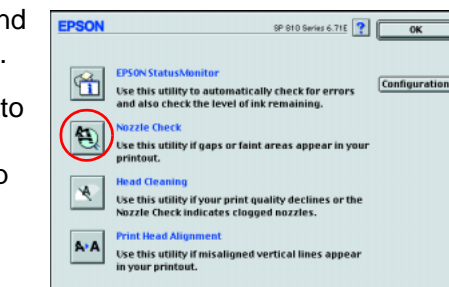
- Click the **Start** button, point to **Settings**, and click **Printers**.
- Select the icon for your printer, then click **Properties** on the File menu. Then click the **Utility** tab.
- Click the **Nozzle Check** button, and follow the on-screen instructions.
- When you are finished, click **OK** to close the Properties dialog box.



Your printer is now set up and ready to use.

For Macintosh users

- Select **Page Setup** in the Finder's **File** menu.
- Click the utility icon.
- Click the **Nozzle Check** button, and follow the on-screen instructions.
- When you are finished, click **OK** to close the utility dialog box. Then click **OK** to close the Page Setup dialog box.



Your printer is now set up and ready to use.

Installing the Photo Print Software


- ❑ **EPSON PhotoQuicker**
This utility lets you print digital photos with ease, using a wide variety of layouts.
- ❑ **EPSON PhotoStarter** (For Windows Me, 98, 2000 and Macintosh users only)
This utility automatically launches EPSON PhotoQuicker and loads photo data when a memory card is inserted into the PC card slot on the computer. You can also save the photo data in selected folders according to the day they were taken or when the memory card was inserted.
- ❑ **EPSON CardMonitor** (For Windows Me, 98, 2000 and Macintosh users only)
This utility works with EPSON PhotoStarter. It monitors the PC card slots on your computer.

System requirements

Item	Windows	Macintosh
Operating system	Microsoft Windows Me, 98, 95, 2000, NT4.0 for EPSON PhotoQuicker Microsoft Windows Me, 98, 2000 for EPSON PhotoStarter and EPSON CardMonitor	Mac OS 8.X / 9.X (except 8.0)
Hardware model	DOS/V system equipped with a standard USB interface or parallel interface. A sound-blaster or compatible sound card is required to reproduce sound.	PowerPC equipped with a standard USB interface (PowerPC G3 266 MHz or higher recommended)
CPU	Pentium 166 MHz or higher (Pentium II 266 MHz or higher recommended)	
Memory	64 MB (128 MB or higher recommended)	42 MB (128 MB or higher recommended)
Display	SVGA (800 × 600) 16-bit color or higher	SVGA (800 × 600) 32,000 colors or higher
Hard disk	Installation: 50 MB or more free space Operation: 170 MB or more free space when handling images of 4.8 million pixels	
CD-ROM Drive	Required	Required

Installing in Windows

EPSON PhotoQuicker


1. Insert the printer software CD in the CD-ROM drive. If the Installer dialog box does not appear, double-click **SETUP.EXE** in the CD-ROM.
2. Select **Install EPSON PhotoQuicker**, click , then click **Next**.
3. Follow the on-screen instructions.
4. When a message appears informing you that installation is complete, click **Finish**.

EPSON PhotoStarter and EPSON CardMonitor

Note:

❑ Before installing EPSON PhotoStarter and CardMonitor, make sure that all the other applications are closed.

❑ After installation, you need to restart your computer for the software to function properly.

1. Insert the printer software CD in the CD-ROM drive. If the Installer dialog box does not appear, double-click **SETUP.EXE** in the CD-ROM.
2. Select **Install Utility**, click , then click **Install EPSON PhotoStarter/EPSON CardMonitor**.
3. Click **Next** and follow the on-screen instructions.
4. When a message appears asking if you want to restart your computer, click the **Yes** radio button and then **Finish** to restart the computer.

Installing in Macintosh

EPSON PhotoQuicker

1. Insert the printer software CD in the CD-ROM drive.
2. Double-click the **Installer** icon in the **EPSON PhotoQuicker** folder.
3. Follow the on-screen instructions to install EPSON PhotoQuicker.

EPSON PhotoStarter and EPSON CardMonitor

Note:

EPSON PhotoStarter needs to be installed before EPSON CardMonitor is installed.

1. Insert the printer software CD in the CD-ROM drive.
2. Double-click the **EPSON Memory Card Software** folder, then double-click the **Installer** icon in the EPSON PhotoStarter or EPSON CardMonitor folder.
3. Follow the on-screen instructions to install EPSON PhotoStarter or EPSON CardMonitor.

Safety Instructions

Read all of the instructions in this section when setting up and using your printer.

When choosing a place for the printer

- ❑ Avoid places subject to rapid changes in temperature and humidity. Also, keep the printer away from direct sunlight, strong light, or heat sources.
- ❑ Avoid places subject to dust, shocks, and vibrations.
- ❑ Leave enough room around the printer to allow for sufficient ventilation.
- ❑ Place the printer near a wall outlet where the plug can be easily unplugged.
- ❑ Place the printer on a flat, stable surface that extends beyond the printer base in all directions. The printer will not operate properly if it is tilted at an angle.

When choosing a power source

- ❑ Use only the type of power source indicated on the printer's label.
- ❑ Do not use a damaged or frayed power cord.
- ❑ If you use an extension cord with the printer, make sure that the total ampere rating of the devices plugged into the extension cord does not exceed the cord's ampere rating. Also, make sure that the total ampere rating of all devices plugged into the wall outlet does not exceed the wall outlet's ampere rating.
- ❑ If you plan to use the printer in Germany, the building installation must be protected by a 10 or 16 amp circuit breaker to provide adequate short-circuit protection and over-current protection for this printer.

When handling ink cartridges

- ❑ Do not open the ink cartridge packages until just before you install them.
- ❑ Keep ink cartridges out of the reach of children. Do not allow children to drink from or otherwise handle the cartridges.
- ❑ Be careful when you handle used ink cartridges, as there may be some ink remaining around the ink supply port. If ink gets on your skin, wash the area thoroughly with soap and water. If ink gets into your eyes, flush them immediately with water. If discomfort or vision problems remain after a thorough flushing, see a doctor immediately.
- ❑ Do not shake the ink cartridges; this can cause leakage.
- ❑ You must remove the yellow tape seals from the cartridges before installing them; otherwise, the cartridges will become unusable.
- ❑ Do not remove the blue portion of the tape seal from the top of the cartridges.
- ❑ Do not remove the tape seals from the bottom of the cartridges.
- ❑ Do not touch or remove the green IC chip on the side of the cartridge.
- ❑ The IC chip on this ink cartridge retains a variety of cartridge related-information, such as the amount of ink remaining, so that a cartridge may be removed and reinserted freely. However, each time the cartridge is inserted, some ink is consumed because the printer automatically performs a reliability check.

When using the printer

- ❑ Do not put your hand inside the printer or touch the ink cartridges during printing.
- ❑ Do not block or cover the openings in the printer's cabinet.
- ❑ Do not attempt to service the printer yourself.
- ❑ Unplug the printer and refer servicing to qualified service personnel under the following conditions:
The power cord or plug is damaged; liquid has entered the printer; the printer has been dropped or the cabinet damaged; the printer does not operate normally or exhibits a distinct change in performance.
- ❑ Do not insert objects through the slots in the printer's cabinet.
- ❑ Take care not to spill liquid on the printer

All rights reserved. No part of this publication may be reproduced, stored in a retrieval system, or transmitted in any form or by any means, electronic, mechanical, photocopying, recording, or otherwise, without the prior written permission of SEIKO EPSON CORPORATION. The information contained herein is designed only for use with this EPSON printer. EPSON is not responsible for any use of this information as applied to other printers. Neither SEIKO EPSON CORPORATION nor its affiliates shall be liable to the purchaser of this product or third parties for damages, losses, costs, or expenses incurred by the purchaser or third parties as a result of: accident, misuse, or abuse of this product or unauthorized modifications, repairs, or alterations to this product, or (excluding the U.S.) failure to strictly comply with SEIKO EPSON CORPORATION's operating and maintenance instructions.

SEIKO EPSON CORPORATION shall not be liable for any damages or problems arising from the use of any options or any consumable products other than those designated as Original EPSON Products or EPSON Approved Products by SEIKO EPSON CORPORATION. SEIKO EPSON CORPORATION shall not be held liable for any damage resulting from electromagnetic interference that occurs from the use of any interface cables other than those designated as EPSON Approved Products by SEIKO EPSON CORPORATION. EPSON is a registered trademark and EPSON Stylus is a trademark of SEIKO EPSON CORPORATION. Microsoft and Windows are registered trademarks of Microsoft Corporation.

General Notice: Other product names used herein are for identification purposes only and may be trademarks of their respective owners. EPSON disclaims any and all rights in those marks.