

USB User's Guide

Read this guide if using a shielded USB cable to connect your EPSON printer to your computer.

System Requirements

To use your printer through the printer's built-in USB port, you need the following:

- ❑ Microsoft® Windows 98® pre-installed PC equipped with a USB port, or an Apple® iMac® computer.
- ❑ USB Interface Cable (shielded) C83623* from Series A 4-pin (computer) to Series B 4-pin (printer)



Caution:

Using other cables not covered by EPSON warranties (especially cables more than 1.8 meters long) may cause the printer to malfunction.

Note:

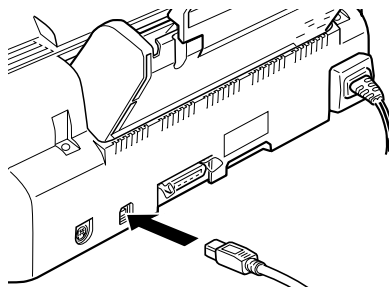
- ❑ *The asterisk (*) is a substitute for the last digit of the product number, which varies by country.*
- ❑ *This cable may not be available in some countries.*
- ❑ For PC's, you must have 10MB of free hard disk space to install the USB Printer Device Driver and the printer software
- ❑ For iMac computers, you must have 10MB of free hard disk space to install the printer software

Connecting the USB Cable

Follow the steps below to connect your printer.

Note:

- ❑ *Install the ink cartridges before connecting the cable. See your printer manual for instructions.*
 - ❑ *For PC's, make sure that the Universal Serial Bus Controller is working properly in the Device Manager before connecting the USB cable. See your computer documentation for details.*
1. Plug the appropriate end of the shielded USB cable into the USB port on the back of the printer. (The end of the cable that fits the printer is a different shape than the end that fits the computer.)



2. Plug the other end into the computer's USB port.

Note:

If you use a USB hub, EPSON recommends connecting the printer to the first tier of the hub, otherwise the printer may malfunction. If the printer does not work properly with the USB hub, connect the printer directly to the computer's USB port.

After connecting the printer to a PC, you must install the EPSON USB Printer Device Driver and the printer software. See “Installing the USB Software in Windows” on page 6.

After connecting the printer to an iMac computer, you must install the printer software and select the USB port for your printer in the Chooser. See “Installing the Printer Software in Your Macintosh” and “Selecting Your Printer in the Chooser” in the *Setup & Daily Use* guide.

Installing the USB Software in Windows

The USB Printer Device Driver is included in the Printer Software CD-ROM shipped with your printer.

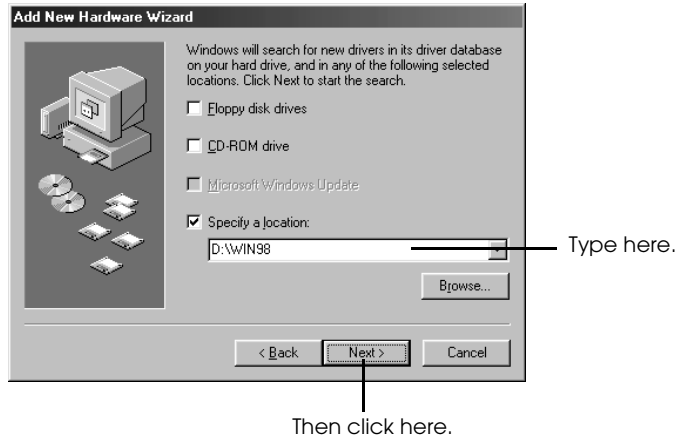
The installation program for the USB Printer Device Driver also allows you to install the printer software. You do not need to install the printer software separately.

1. Make sure Windows 98 is running.
2. Turn on your printer. The following dialog box appears.



3. Click Next and follow the instructions on the screen.

- When the following dialog box appears, click Specify a location and type D:\win98 (if your CD-ROM drive uses a drive letter other than “D”, substitute the appropriate letter). Insert the printer software CD-ROM, then click Next.



- Click Next to begin the device driver installation.



6. After the installation is completed, the following dialog box appears. Click Finish.



Click here.

7. The printer software installation automatically starts and the following dialog box appears. Click Next.



This varies depending on your printer model.

Click here.

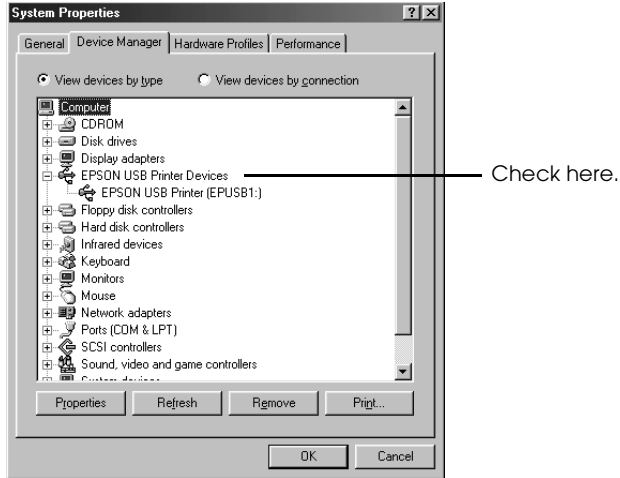
- When the dialog box below appears, click Next and follow the instructions on the screen.



Click here.

After the printer software is installed, EPSON Status Monitor 2 installation starts automatically. Follow the on-screen instructions.

- To confirm that installation was successful, check to see if “EPSON USB Printer Devices” appears in the Device Manager. Click Start, point to Settings, and click Control Panel. Then double-click System and click the Device Manager tab.



Your printer is now ready to receive print jobs through the USB port. For instructions on using your printer, see your printer manual.

Troubleshooting

This section helps you solve problems that may occur when using the printer connected with a USB cable.

Cannot install the USB Printer Device Driver (for PC's)

Try one or more of these solutions:

- Make sure your computer is a Windows 98 pre-installed model.
- Make sure that the Universal Serial Bus Controller is working properly in the Device Manager. For details, see your computer documentation. If it is not working properly, contact your computer dealer.

Printer does not work correctly

Try one or more of these solutions:

- Use the recommended USB cable as described in “System Requirements” on page 3.
- If you use a USB hub, connect the printer to the first tier of the hub, or connect the printer to the computer’s USB port directly.
- For PC’s, try reinstalling the USB Printer Device Driver and the printer software. First, uninstall the EPSON Printer Software using Add/Remove Programs in the Control Panel, then uninstall the EPSON USB Printer Devices. Next, re-install the software as described in “Installing the USB Software in Windows” on page 6.

EPSON