

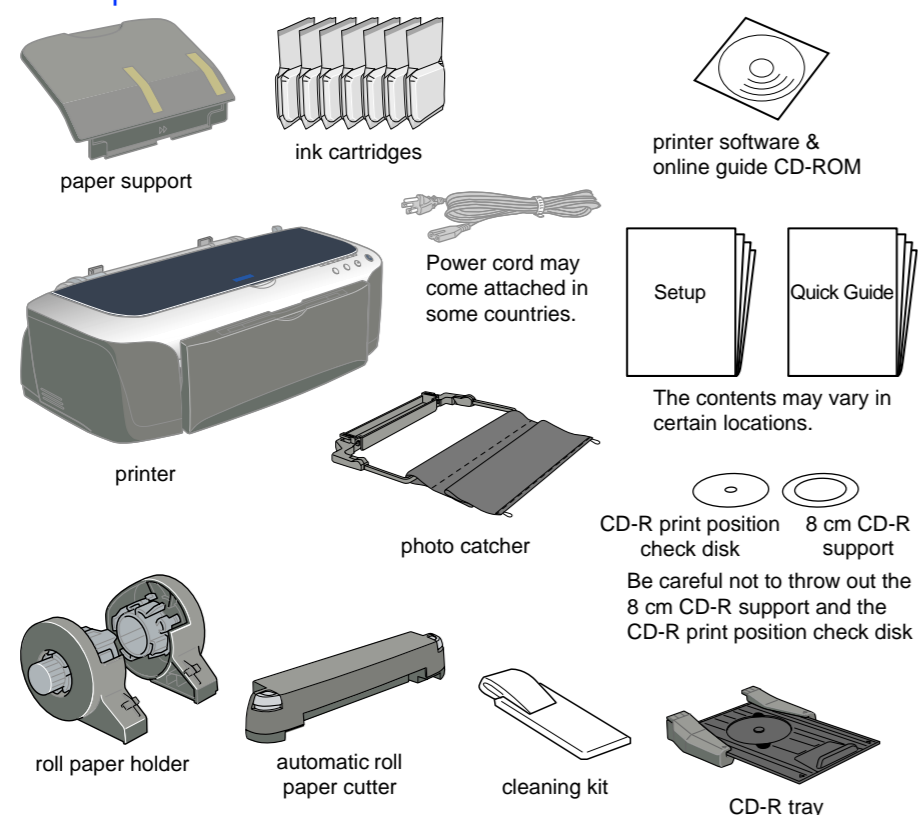
## Setting Up the Printer Hardware

### Cautions and Notes

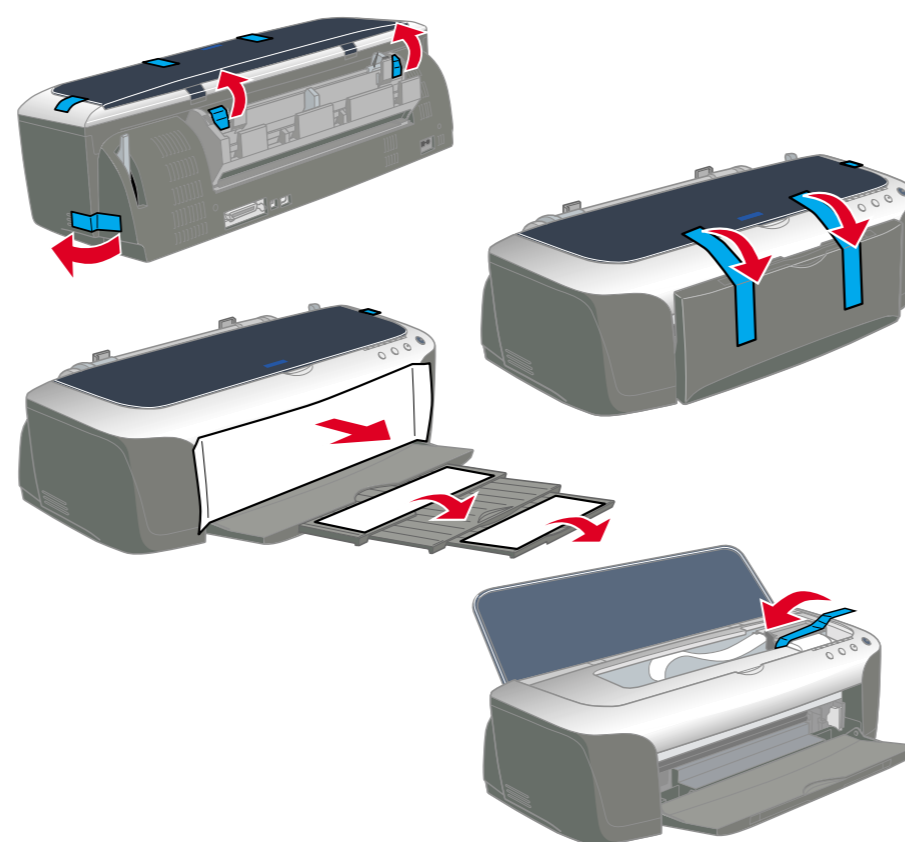
**!** **Cautions** must be observed to avoid damage to your equipment.

**Notes** contain important information and useful tips on the operation of your printer.

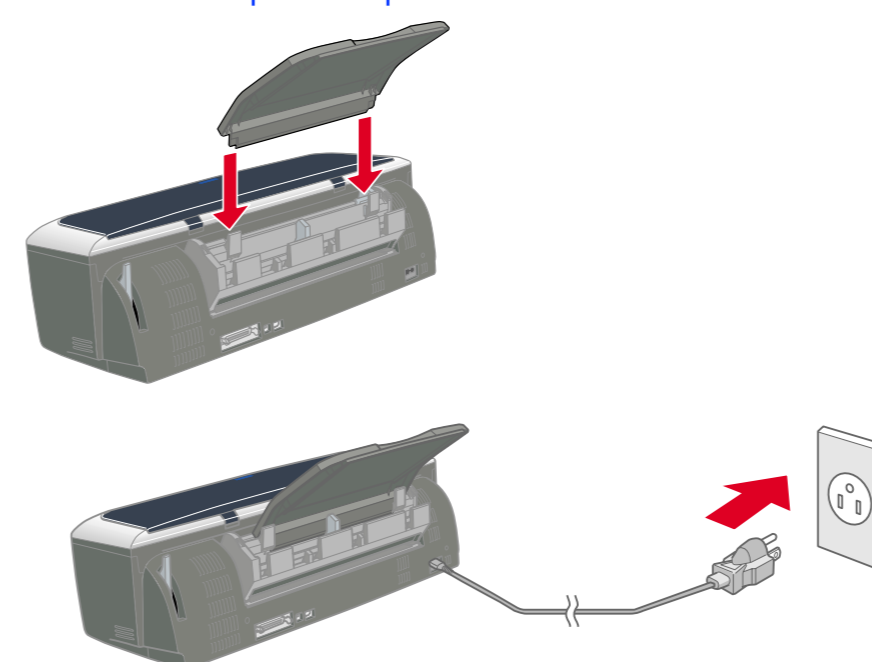
### 1. Unpack



### 2. Remove protective materials



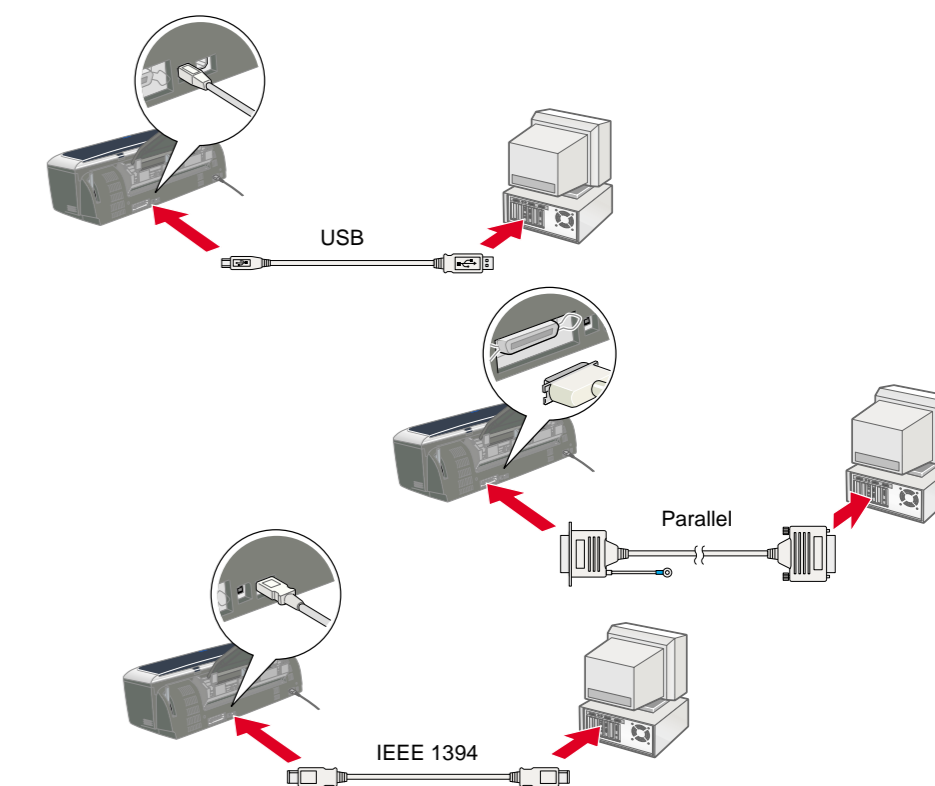
### 3. Attach the printer parts



**!** **Caution:** If the printer comes on when you plug in the power cord, turn off the printer by pressing down the  $\odot$  power button until the printer lights go out.

### 4. Connect the printer

Connect the printer cable to the ports on the computer and the printer.



## Installing the Printer Software and the Ink Cartridges

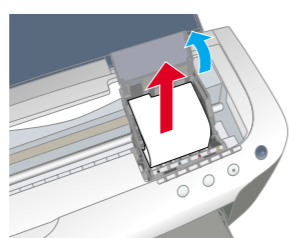
### For Windows

1. Make sure that printer is off.
2. Insert the printer software CD in the CD-ROM drive. If the Installer dialog box does not appear, double-click **SETUP.EXE** in the CD-ROM.
3. Select **Install Software**, and click  $\rightarrow$ .
4. Follow the on-screen instructions.



**Note:**

- Remove the protective material under the cartridge cover before installing ink cartridges.
- If the Setup utility does not start, press the  $\odot$  power button on the printer and follow the instructions in the Macintosh section of this sheet, beginning from "3. Install the ink cartridges."

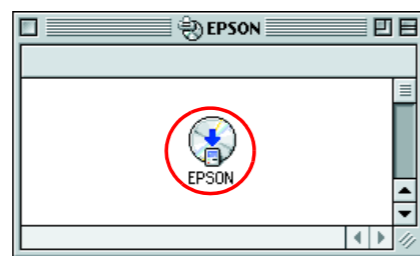


When ink cartridge installation is complete, proceed to "Load paper and check the print head nozzles" on this sheet.

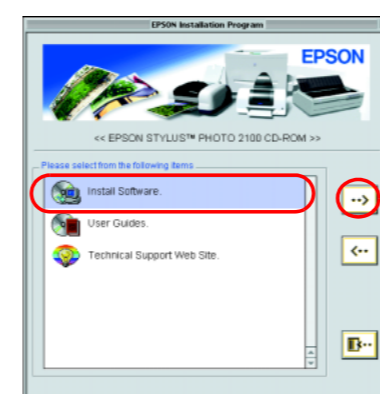
### For Macintosh

#### 1. Install the printer software

- !** **Caution:** Turn off all virus protection programs before you install the printer software.
1. Make sure that printer is off, then turn on your Macintosh and insert the printer software CD in the CD-ROM drive.
  2. Double-click the **EPSON** icon.



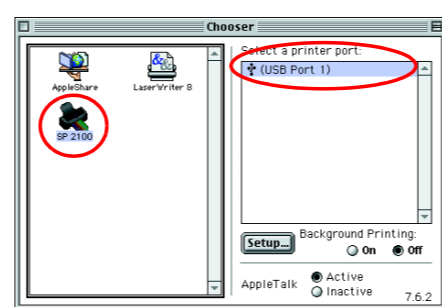
3. Select **Install Software**, and click  $\rightarrow$ .
4. Follow the on-screen instructions.



#### 2. Select the printer

After you have installed the printer software, you need to select your printer.

1. Press the  $\odot$  power button to turn on the printer. The print head moves to the ink cartridge installation position.
2. Choose **Chooser** from the Apple menu. Then, select the icon for your printer and the port that your printer is connected to.
3. Close the Chooser.



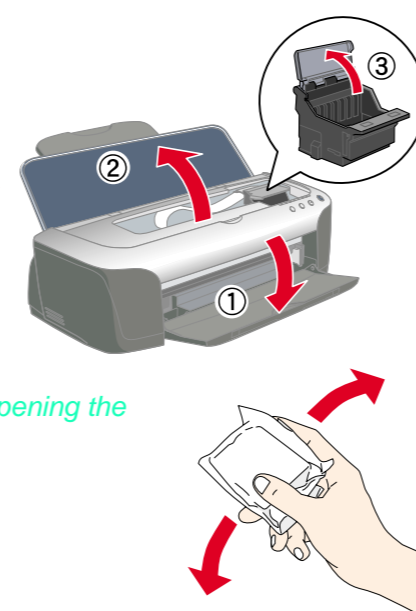
#### 3. Install the ink cartridges

1. Lower the output tray, then open the printer cover and the cartridge cover.

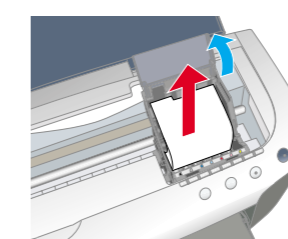
**!** **Caution:** Do not move the print head by hand, as this may damage the printer.

**Note:**

For best results, shake the ink cartridge four or five times before opening the package.

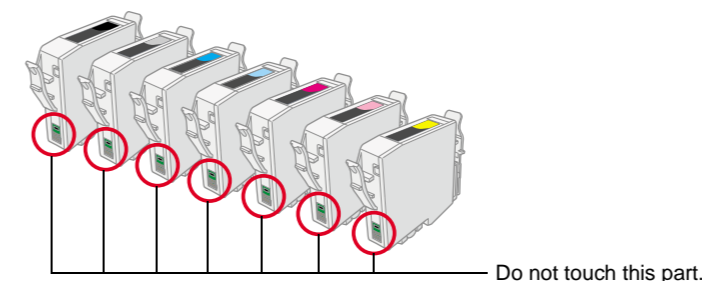


2. Remove the protective material under the cartridge cover before installing ink cartridges.

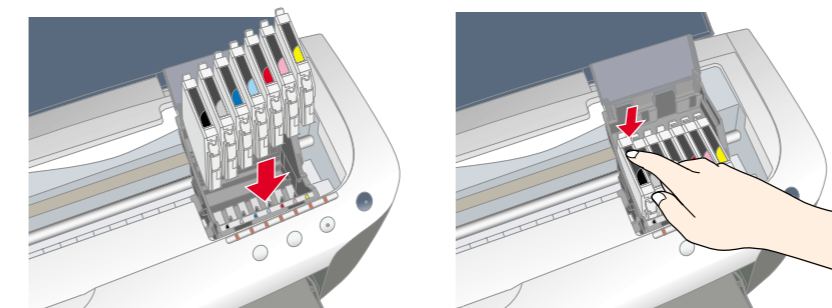


3. Remove the new ink cartridges from their protective bag.

- !** **Caution:**
- Be careful not to break the hook on the side of the cartridge when you remove it from the protective bag.
  - Do not shake the ink cartridge after removing from the bag; this can cause leakage.
  - Do not remove or tear the label on the cartridge; this can cause leakage.
  - Do not touch the green IC chip on the side of the cartridge. Doing so may prevent normal operation and printing.

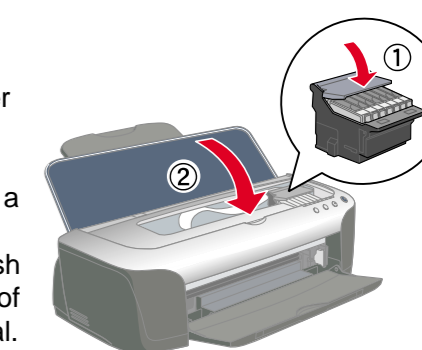


4. Place the ink cartridges vertically into the cartridge holders. Without applying excessive force, push the ink cartridges down until they click into place. To place them vertically, install the ink cartridges from one end.



**Note:** Install all ink cartridges. The printer will not work unless all cartridges are installed properly.

5. Close the cartridge cover and the printer cover.
6. Press the  $\odot$  ink button. The printer moves the print head and begins charging the ink delivery system. This process takes about one and a half minutes. While charging, the  $\odot$  power light and the ink lights flash and the printer produces a variety of mechanical sounds. This is normal.



- !** **Caution:**
- Do not turn the power off during the ink charging process.
  - Do not load paper until ink charging is complete.

**Note:** If the ink end error occurs after the print head moves to its home position, the ink cartridge may not be installed properly. Press the  $\odot$  ink button again, and reinstall the ink cartridge until it clicks into place.

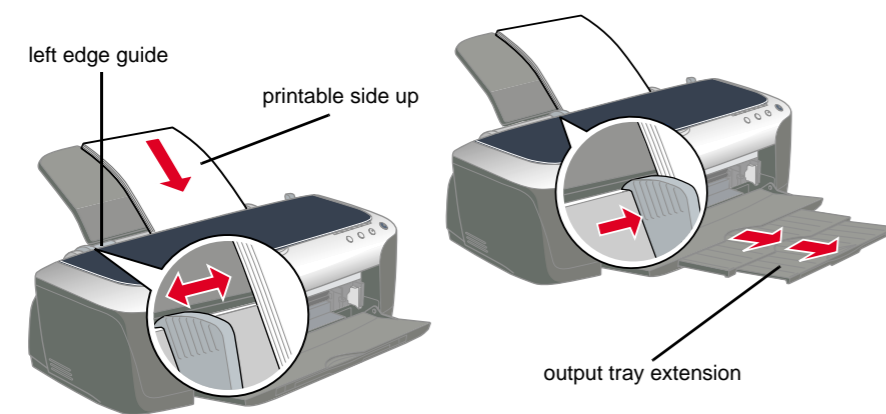
When the ink charging process is finished, the  $\odot$  power light stops flashing and remains on.

When ink cartridge installation is complete, proceed to "Load paper and check the print head nozzles" written overleaf on this sheet.

The ink cartridges packaged with your printer are for initial setup. In order to maintain high quality printouts, your printer will use large quantities of ink during the setup process. As a result, the ink cartridges used for setup will empty faster than normal.

# Load paper and check the print head nozzles

Make sure that the computer is turned on. Load paper into the sheet feeder making sure that the side of the paper that you wish to print onto is facing up and that the right edge of the paper is against the right edge guide. Next, slide the left edge guide so that it is against the left edge of the paper.



Once paper is loaded, follow these steps to check the print head nozzles.

## Safety Instructions

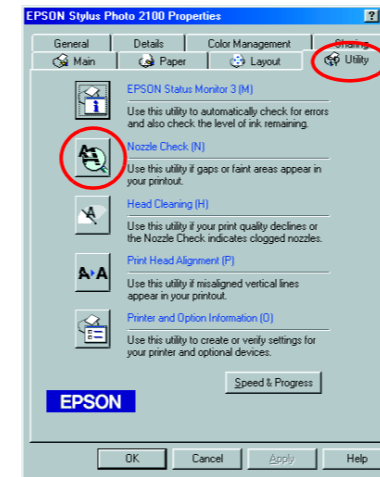
Read all of the instructions in this section when setting up and using your printer.

### When choosing a place for the printer

- Avoid places subject to rapid changes in temperature and humidity. Also, keep the printer away from direct sunlight, strong light, or heat sources.
- Avoid places subject to dust, shocks, and vibrations.
- Leave enough room around the printer to allow for sufficient ventilation.
- Place the printer near a wall outlet where the plug can be easily unplugged.
- Place the printer on a flat, stable surface that extends beyond the printer base in all directions. If you place the printer by the wall, leave more than 10 cm between the back of the printer and the wall. The printer will not operate properly if it is tilted at an angle.
- When storing or transporting the printer, don't tilt it or put it vertically or turn it upside down. Otherwise ink may leak from the cartridge.


### For Windows users

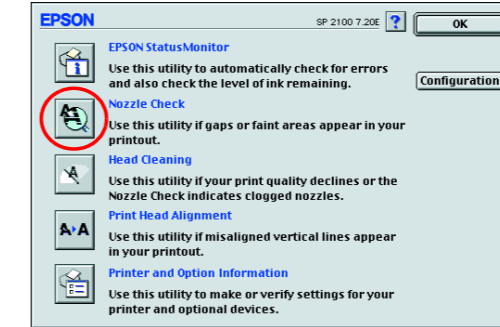
1. Click the **Start** button, point to **Settings**, and click **Printers**.
2. For Windows Me, 98, and 95 users, select your printer, then click **Properties** on the File menu. Then click **Utility** tab. For Windows XP and 2000 users, select your printer, then click **Printing Preferences** on the File menu. Then click **Utility** tab. For Windows NT 4.0 users, select your printer, then click **Document Defaults** on the File menu. Then click **Utility** tab.
3. Click the **Nozzle Check** button, and follow the on-screen instructions.
4. When you are finished, click **OK** to close the Properties dialog box.



Your printer is now set up and ready to use.

### For Macintosh users

1. Select **Page Setup** in the Finder's **File** menu.
2. Click the  utility icon.
3. Click the **Nozzle Check** button, and follow the on-screen instructions.
4. When you are finished, click **OK** to close the utility dialog box. Then click **OK** to close the Page Setup dialog box.



Your printer is now set up and ready to use.

### When choosing a power source

- Use only the type of power source indicated on the printer's label.
- Do not use a damaged or frayed power cord.
- If you use an extension cord with the printer, make sure that the total ampere rating of the devices plugged into the extension cord does not exceed the cord's ampere rating. Also, make sure that the total ampere rating of all devices plugged into the wall outlet does not exceed the wall outlet's ampere rating.
- If you plan to use the printer in Germany, the building installation must be protected by a 10 or 16 amp circuit breaker to provide adequate short-circuit protection and over-current protection for this printer.
- Power cord  
Be sure AC power code meets the relevant local safety standards.

### When handling ink cartridges

- Do not open the ink cartridge packages until just before you install them.
- Before installing the new ink cartridge, shake it four or five times before opening its package.
- Do not shake the ink cartridges after removing from the bag; this can cause leakage.
- Be careful not to break the hooks on the side of the ink cartridge when you remove it from the package.
- Keep ink cartridges out of the reach of children. Do not allow children to drink from or otherwise handle the cartridges.
- Be careful when you handle used ink cartridges, as there may be some ink remaining around the ink supply port. If ink gets on your skin, wash the area thoroughly with soap and water. If ink gets into your eyes, flush them immediately with water. If discomfort or vision problems remain after a thorough flushing, see a doctor immediately.
- Do not touch or remove the green IC chip that is located on the side of the cartridge.
- Do not remove or tear the label on the cartridge; this can cause leakage.
- Store each ink cartridge so that the bottom of its packaging faces down.

### When using the printer

- Do not put your hand inside the printer or touch the ink cartridges during printing.
- Do not block or cover the openings in the printer's cabinet.
- Do not attempt to service the printer yourself.
- Unplug the printer and refer servicing to qualified service personnel under the following conditions:  
The power cord or plug is damaged; liquid has entered the printer; the printer has been dropped or the cabinet damaged; the printer does not operate normally or exhibits a distinct change in performance.
- Do not insert objects through the slots in the printer's cabinet.
- Take care not to spill liquid on the printer.
- Leave the ink cartridge installed. Removing the cartridges can dehydrate the print head and may prevent the printer from printing.

### When using the Automatic Roll Paper Cutter

- Do not attach or remove this product while the power to the printer's main unit is on.
- Keep the cutter out of the reach of children.
- Do not touch the paper ejection part and cutter blade.
- Do not place the cutter on an unstable surface (such as on an unstable table or a tilted surface).
- Do not disassemble or modify the cutter.

All rights reserved. No part of this publication may be reproduced, stored in a retrieval system, or transmitted in any form or by any means, electronic, mechanical, photocopying, recording, or otherwise, without the prior written permission of SEIKO EPSON CORPORATION. The information contained herein is designed only for use with this EPSON printer. EPSON is not responsible for any use of this information as applied to other printers.

Neither SEIKO EPSON CORPORATION nor its affiliates shall be liable to the purchaser of this product or third parties for damages, losses, costs, or expenses incurred by the purchaser or third parties as a result of accident, misuse, or abuse of this product or unauthorized modifications, repairs, or alterations to this product, or (excluding the U.S.) failure to strictly comply with SEIKO EPSON CORPORATION's operating and maintenance instructions.

SEIKO EPSON CORPORATION shall not be liable for any damages or problems arising from the use of any options or any consumable products other than those designated as Original EPSON Products or EPSON Approved Products by SEIKO EPSON CORPORATION.

SEIKO EPSON CORPORATION shall not be held liable for any damage resulting from electromagnetic interference that occurs from the use of any interface cables other than those designated as EPSON Approved Products by SEIKO EPSON CORPORATION.

EPSON is a registered trademark and EPSON Stylus is a trademark of SEIKO EPSON CORPORATION.

PRINT Image Matching Version 2.0. Copyright 2002 SEIKO EPSON CORPORATION. All rights reserved. PRINT Image Matching is a trademark of SEIKO EPSON CORPORATION. The PRINT Image Matching logo is a trademark of SEIKO EPSON CORPORATION.

PRINT Image Matching is a term for the print command that is embedded in header file of the image created by digital camera. It contains color setting and image parameter information.

Part of the photo data stored on the Printer Software CD-ROM is licensed from Design Exchange Co., Ltd. Copyright © 2000 Design Exchange Co., Ltd. All rights reserved.

Microsoft and Windows are registered trademarks of Microsoft Corporation.

Apple and Macintosh are registered trademarks of Apple Computer, Inc.

General Notice: Other product names used herein are for identification purposes only and may be trademarks of their respective owners. EPSON disclaims any and all rights in those marks.