

Feature

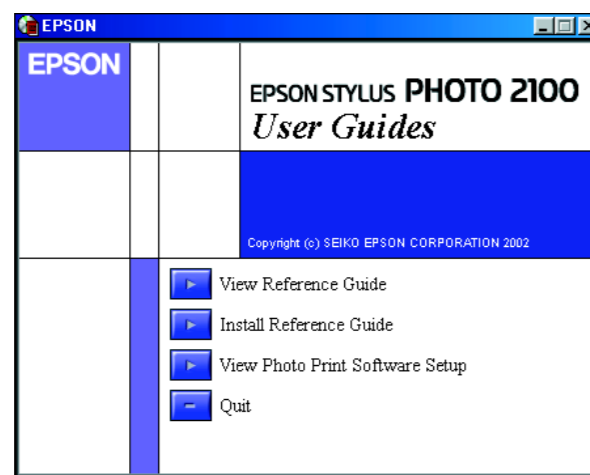
This printer provides you with a variety of different printing options as follows. For details, refer to the online *Reference Guide*.

- Double-sided printing
- Printing on roll paper
- Printing on CD-R
- Printing on matte board
- No margin printing
- Automatic roll paper cutter
- Photo Quicker
- Ink change system

Accessing the Online Reference Guide

Follow these steps to access the online *Reference Guide*.

1. Insert the printer software CD in the CD-ROM drive.
2. For Windows, select **User Guides** in the Installer dialog box and click . For Macintosh, double-click the **EPSON** icon. Then select **User Guides** in the installer dialog box and click .



Online Problem Solving

The Problem Solver and EPSON's Technical Support Web Site provide you with tips to help solve problems. Access the Problem Solver or Technical Support in the following ways:

For *Windows users*

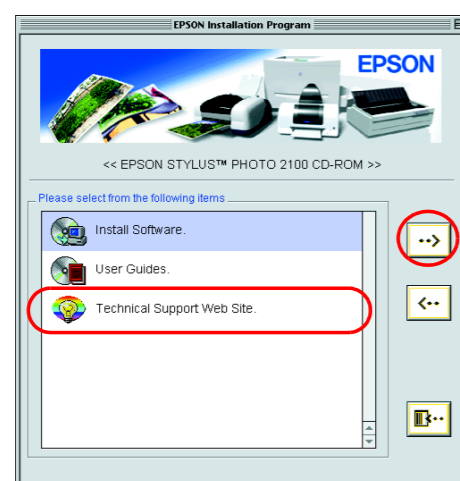
- Click **Start**, point to **Programs** and then to **EPSON**, then click **ESP2100 Problem Solver**.
- You can also access them by clicking **Technical Support** in the Status Monitor 3 dialog box or on the Main menu of the printer software.

For further information on the customer support services available in your area, see the online *Reference Guide*.

For *Macintosh users*

1. Insert the CD in the CD-ROM drive.
2. Double-click the **EPSON** icon.
3. Select **Technical Support Web Site**, and click .

For further information on the customer support services available in your area, see the online *Reference Guide*.



Accessing the Printer Software

The printer software includes a printer driver and utilities. The printer driver lets you choose from a wide variety of settings to get the best results from your printer. The printer utilities help you check the printer and keep it in top operating condition. Access the printer software as explained in this section.

For *Windows users*

From **Windows applications**

1. From the **File** menu of your application, click **Print**. The Print dialog box appears.
2. Select your printer, then click **Properties, Printer, Setup, or Options** to access the printer software. (Depending on your application, you may need to click a combination of these buttons.)

Note:

When you access the printer software from a *Windows application*, the settings that you make apply only to the application you are using.

From the **Start menu**

1. For Windows Me, 2000, NT 4.0, 98 and 95 users, click **Start**, point to **Settings**, then click **Printers**.

For Windows XP users, click **Start**, then click **Control Panel**, then click **Printers and other hardware**, then click **Printers and Faxes**.

2. For Windows Me, 98, and 95 users, select your printer, then click **Properties** on the File menu.

For Windows XP and 2000 users, select your printer, then click **Printing Preferences** on the File menu.

For Windows NT 4.0 users, select your printer, then click **Document Defaults** on the File menu.

For *Macintosh users*

You can access the various printer software dialog boxes as described below.

Dialog Box	How to Access
Print	Click Print on the File menu of your application or click Options in the Page Setup dialog box.
Page Setup	Click Page Setup on the File menu of your application.
Layout	Click the Layout icon button in the Print dialog box.
Utility	Click the Utility icon button in the Print or Page Setup dialog box.

Replacing Ink Cartridges

You can replace an ink cartridge by using the Status Monitor utility installed on your computer, or by using the printer's control panel. To replace an ink cartridge or check ink levels using the Status Monitor utility, refer to "Using the Status Monitor" in the online *Reference Guide*. To replace an ink cartridge using the printer's control panel, follow the steps in this section.

Note:

- You cannot continue printing with one ink cartridge empty, even if the other cartridge still contains ink. Before printing, replace the empty cartridge.
- In addition to the ink used during document printing, ink is consumed during the print head cleaning operation, during the self-cleaning cycle which is performed when the printer is turned on, and during ink charging when the ink cartridge is installed in the printer.

1. Make sure that the printer is on, but not printing. Then open the printer cover.
2. Press the ink button. The print head moves to the ink cartridge replacement position.

Caution:

- Do not move the print head by hand, as this may damage the printer. Always press the ink button to move it.
- Whenever an ink cartridge is removed, be sure to protect the ink supply area from dirt and dust. Do not touch the ink supply port or its surrounding area.

3. Open the cartridge cover. Pinch the sides of the ink cartridge that you want to replace.
4. Lift the cartridge out of the printer and dispose it properly. Do not take the used cartridge apart or try to refill it.

Cautions and Notes

Caution: Cautions must be observed to avoid damage to your equipment.

Notes: Notes contain important information and useful tips on the operation of your printer.

5. Install the new ink cartridges as explained on the *Setup* in the "3. Install the ink cartridges" section.

Note:

Dispose of the used cartridge properly. Do not take it apart or try to refill it.

Ink Change System

This printer uses 7 ink cartridges that are packaged with the printer. Instead of the Photo Black ink cartridge, you can also use the Matte Black ink cartridge (Option: T0348) that is suitable for printing on matte paper. It also makes the printing blacker and sharper when you print on plain paper. Change the ink cartridge depending on your purpose. To replace the ink cartridge, refer to the "Replacing Ink Cartridges" section on this sheet.

Possible ink combination.

Recommended paper	Ink Setting Position (from the left)						
	1	2	3	4	5	6	7
1 All kinds of paper	Photo Black	Light Black	Cyan	Light Cyan	Magenta	Light Magenta	Yellow
2 Plain Paper/ Premium Ink Jet Plain Paper/ Bright White Ink Jet Paper/ Archival Matte Paper/ Watercolor Paper/Radiant white/ CD-R	Matte Black						

Caution:

- Only the first ink cartridge from the left side can be changed.
- Do not install the ink cartridges in combinations not listed above.
- Turn off the EPSON Photo Print Software before replacing an ink cartridge.

After replacing the ink cartridge, make sure the driver setting for the ink cartridge information is correct. To set the ink cartridge information, click the **Printer and Option Information** button on the **Utility** tab (Windows). Then select the appropriate black ink cartridge.

Choose **Chooser** from the Apple menu and click the icon for your printer (Macintosh).

For details, refer to the online *Reference Guide*.

Panel Operation

Button	Function
power	Turns the printer on and off. To turn the printer off, press and hold the power button until the light goes out. Clears the memory of the printer if pressed twice while the power is on.
paper	Controls the paper-load and eject functions. Printing will resume if pressed after a paper out error or double feed error.
ink	Moves the print head to enable replacement of the ink cartridge. Enables print head cleaning if pressed for three seconds while the ink out light is off.
roll paper (without the cutter)	Prints a cutting guideline and feeds roll paper to a position where it can be easily removed from the sheet feeder if pressed after printing. Feeds roll paper to the printing position if pressed after cutting the paper. Feeds roll paper in reverse to a position where it can be easily removed from the roll paper feeder, if pressed for 3 seconds.
roll paper (with the cutter)	With driver setting Single Cut or Double Cut Cuts roll paper at the position that is selected and ejects it if pressed after printing. Then feeds roll paper to the printing position automatically. With driver setting Not Cut Cuts roll paper with a margin and ejects it if pressed after printing. Then feeds roll paper to the printing position automatically.

See the online *Reference Guide* for details.

Error Indicators

You can identify many common problems using the lights on the printer's control panel. Use the following table of light patterns to diagnose the problem, then follow the recommended corrective measures.

Lights	Problem and Solution	
	Paper out	No media is loaded in the printer. If printing on sheets of paper: Load paper into the sheet feeder, then press the paper button. If printing on roll paper: Remove any roll paper from the printer, then reload it into the roll paper feeder. If printing on a CD-R: Set the adjust lever to the position and remove the CD-R tray. Then reinsert the CD-R tray.
	Paper gap	Loaded paper is too thick or the adjust lever is not in the appropriate position. Set the adjust lever to the appropriate position for the thickness of the paper, then press the paper button.
	Paper jam	Paper is jammed in the printer. If printing on sheets of paper: Turn off the printer, set the adjust lever to the position, then remove the paper. Next, return the adjust lever to the position. If printing on roll paper: Turn off the printer, set the adjust lever to the position, then use a pair of scissors to cut off the roll paper that has already been printed on. Next, use the roll paper knobs to remove the paper. Return the adjust lever to the position, then reload the paper into the roll paper feeder.
	Cutter error	The automatic roll paper cutter could not cut the roll paper correctly. Remove the roll paper, then reload it into the roll paper feeder.
	Adjust lever position error (paper light flashes quickly)	The adjust lever is set to the position. The adjust lever is set to the position when printing on paper, or is not set to the position when printing on a CD-R. Set the adjust lever to the appropriate position for the loaded paper or CD-R.
	Ink low	The ink cartridge is nearly empty. Obtain a replacement ink cartridge. To determine the empty ink cartridge, check which light is flashing, or check the ink level using EPSON Status Monitor 3* or EPSON StatusMonitor*.
	Ink color error (ink lights flash quickly)	During printing, the ink cartridge furthest to the left was replaced with an ink cartridge of a different color. Remove the ink cartridge and install an ink cartridge that matches the color of the one originally installed. After doing so, the printer will automatically resume printing.
	Ink out	The ink cartridge is empty or is not installed. Replace the ink cartridge with a new one. To determine which cartridge is empty, check the ink level using EPSON Status Monitor 3* or EPSON StatusMonitor*. If the ink end error occurs after the print head moves to its home position, the ink cartridge may not be installed properly. Reinstall the ink cartridge until it clicks into place.
	Wrong cartridge	The currently installed ink cartridge is not compatible with the printer. Use the appropriate ink cartridge. Incorrectly installed ink cartridge The ink cartridge is not installed correctly. If the print head is at the home position, press the ink button to move the print head to the ink cartridge replacement position. Remove and reinsert the ink cartridge. Then continue with ink cartridge installation. If the print head is at the ink cartridge replacement position, remove and reinsert the ink cartridge. Then continue with ink cartridge installation.
	Cutter position error	The automatic roll paper cutter did not return to the appropriate position. Turn off the printer, then turn the printer back on. If the error does not clear, contact your dealer.
	Carriage error (paper light and ink lights flash alternately)	The print head carriage is obstructed by jammed paper or other foreign material and cannot return to the home position. Turn off the printer. Open the printer cover and remove any paper from the paper path by hand. Then, turn the printer back on. If the error does not clear, contact your dealer.
	Unknown printer error (paper light and ink lights flash quickly)	An unknown printer error has occurred. Turn off the printer and contact your dealer.

= on, = off, = flashing
 = on, = off, = flashing
* EPSON Status Monitor 3 is for Windows; EPSON StatusMonitor is for Macintosh.

All rights reserved. No part of this publication may be reproduced, stored in a retrieval system, or transmitted in any form or by any means, electronic, mechanical, photocopying, recording, or otherwise, without the prior written permission of SEIKO EPSON CORPORATION. The information contained herein is designed only for use with this EPSON printer. EPSON is not responsible for any use of this information as applied to other printers.

Neither SEIKO EPSON CORPORATION nor its affiliates shall be liable to the purchaser of this product or third parties for damages, losses, costs, or expenses incurred by the purchaser or third parties as a result of accident, misuse, or abuse of this product or unauthorized modifications, repairs, or alterations to this product, or (excluding the U.S.) failure to strictly comply with SEIKO EPSON CORPORATION's operating and maintenance instructions.

SEIKO EPSON CORPORATION shall not be liable for any damages or problems arising from the use of any options or any consumable products other than those designated as Original EPSON Products or EPSON Approved Products by SEIKO EPSON CORPORATION.

SEIKO EPSON CORPORATION shall not be held liable for any damage resulting from electromagnetic interference that occurs from the use of any interface cables other than those designated as EPSON Approved Products by SEIKO EPSON CORPORATION.

EPSON is a registered trademark and EPSON Stylus is a trademark of SEIKO EPSON CORPORATION. PRINT Image Matching Version 2.0. Copyright 2002 SEIKO EPSON CORPORATION. All rights reserved. PRINT Image Matching is a trademark of SEIKO EPSON CORPORATION. The PRINT Image Matching logo is a trademark of SEIKO EPSON CORPORATION.

PRINT Image Matching is a term for the print command that is embedded in header file of the image created by digital camera. It contains color setting and image parameter information.

Microsoft and Windows are registered trademarks of Microsoft Corporation.

Apple and Macintosh are registered trademarks of Apple Computer, Inc.

General Notice: Other product names used herein are for identification purposes only and may be trademarks of their respective owners. EPSON disclaims any and all rights in those marks.