

# USB User's Guide

If you connect your EPSON printer to your computer using a shielded USB cable, see this guide.

---

## System Requirements

To use your printer through the printer's built-in USB port, you need the following:

- ❑ Microsoft® Windows 98® pre-installed PC equipped with a USB port
- ❑ USB Interface Cable (shielded) C83623\* from Series A 4-pin (computer) to Series B 4-pin (printer)



**Caution:**

*Using other cables not covered by EPSON warranties (especially cables more than 1.8 meter's long) may cause the printer to malfunction.*

**Note:**

- ❑ *The asterisk (\*) is a substitute for the last digit of the product number, which varies by country.*
- ❑ *Depending on the country, this cable may not be available.*
- ❑ 10MB hard disk space to install the USB Printer Device Driver and the printer software

---

## Connecting the USB Cable

**Note:**

*Install the ink cartridges before connecting the cable. See your printer manual.*

Before connecting a shielded USB cable, make sure that the Universal Serial Bus Controller is working properly on the Device Manager of Windows 98. For details, see your computer manual.

1. Turn off your printer, if necessary.
2. Plug one end of a shielded USB cable to the USB connector on the back of the printer.
3. Plug the other end into the computer's USB connector.

**Note:**

*If you use a USB hub, EPSON recommends you to connect the printer to the first tier of the hub, otherwise the printer may malfunction. If the printer does not work properly with the USB hub, please connect the printer to the computer's USB port directly.*

After connecting the printer to your computer, you must install the EPSON USB Printer Device Driver and the printer software.

---

## ***Installing the USB Printer Device Driver and Printer Software***

The USB Printer Device Driver is included in the Printer Software CD-ROM shipped with your printer.

If you install the USB Printer Device Driver, the installation program automatically continue to let you install the printer software necessary for using your printer.

1. Make sure Windows 98 is running.
2. Turn on your printer. The following dialog box appears.



3. Follow the instructions on the screen. You may need to insert the printer software CD in your CD-ROM drive.

- When the following dialog box appears, click Specify a location and type D:\win98 (if the CD-ROM drive has a drive letter other than “D”, substitute the appropriate letter). Then click Next.



Type here.

- After finishing the USB printer device driver installation, the printer software installation automatically starts and the following dialog boxes appear. Click Finish, then click Next.

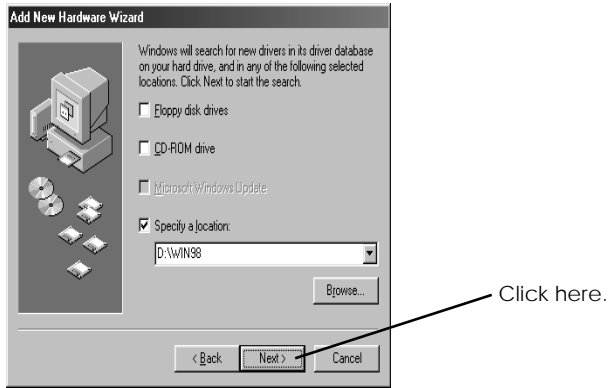


Click here.

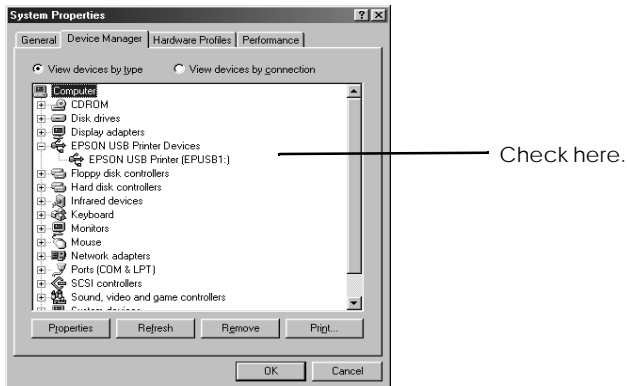


Then click here.

- When the dialog box below appears, click **Next** and follow the instructions on the screen.



- To confirm that installation was successful, check to see if "EPSON USB Printer Devices" appears in the Device Manager. Click **Start**, point to **Settings**, and click **Control Panel**. Then **double-click System** and click the **Device Manager** tab.



Now you can use your printer. For instructions on using your printer, see your printer manual.

---

## *Troubleshooting*

This section helps you solve problems that may occur when using the printer connected with a USB cable.

### *Cannot install the USB Printer Device Driver*

Try one or more of these solutions:

- ❑ Make sure your computer is a Windows 98 pre-installed model (see "System Requirements" on page 2).
- ❑ Make sure that the Universal Serial Bus Controller is working properly in the Device Manager. For details, see your computer manual. If it is not working properly, contact your computer dealer.

### *Printer does not work correctly*

Try one or more of these solutions:

- ❑ Use the recommended USB cable as described in "System Requirements" on page 2.
- ❑ If you use a USB hub, connect the printer to the first tier of the hub, or connect the printer to the computer's USB port directly.
- ❑ Try reinstalling the USB Printer Device Driver and the printer software. First, uninstall the EPSON Printer Software using Add/Remove Programs in Windows 98, then uninstall the EPSON USB Printer Devices. Next, re-install the software as described in "Installing the USB Printer Device Driver and Printer Software" on page 4.

