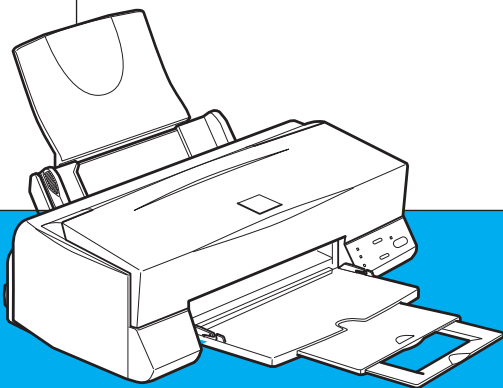


EPSON

Color Ink Jet Printer



EPSON STYLUS™ COLOR 660

Daily Use

4010612
xxx-01

Where to Find Information

Setup Guide

- ❑ This guide will help you set up and begin using your printer. It includes information on setting up your printer and installing the printer software.

Daily Use Guide

- ❑ This guide provides information on daily printer operation. It also contains troubleshooting tips and customer support information.

Online Guides included on the CD-ROM

The guides on the CD-ROM included with your printer will help you learn more about your printer and color printing. To view these guides, you must have a Web browser installed on your computer. For more information on using this CD-ROM, see the included *CD-ROM Booklet*.

- ❑ ***Reference Guide*** Provides detailed information about printer software settings, printing on special paper, maintenance, and problem solving.
- ❑ ***Color Guide*** Includes sample images, explanations and troubleshooting information that will help answer your questions about color imaging and printing.

EPSON STYLUS™ COLOR 660

Color Ink Jet Printer

All rights reserved. No part of this publication may be reproduced, stored in a retrieval system, or transmitted in any form or by any means, electronic, mechanical, photocopying, recording, or otherwise, without the prior written permission of SEIKO EPSON CORPORATION. The information contained herein is designed only for use with this EPSON printer. EPSON is not responsible for any use of this information as applied to other printers.

Neither SEIKO EPSON CORPORATION nor its affiliates shall be liable to the purchaser of this product or third parties for damages, losses, costs, or expenses incurred by the purchaser or third parties as a result of: accident, misuse, or abuse of this product or unauthorized modifications, repairs, or alterations to this product, or (excluding the U.S.) failure to strictly comply with SEIKO EPSON CORPORATION's operating and maintenance instructions.

SEIKO EPSON CORPORATION shall not be liable for any damages or problems arising from the use of any options or any consumable products other than those designated as Original EPSON Products or EPSON Approved Products by SEIKO EPSON CORPORATION.

SEIKO EPSON CORPORATION shall not be held liable for any damage resulting from electromagnetic interference that occurs from the use of any interface cables other than those designated as EPSON Approved Products by SEIKO EPSON CORPORATION.

EPSON is a registered trademark and EPSON Stylus is a trademark of SEIKO EPSON CORPORATION.

Microsoft and Windows are registered trademarks of Microsoft Corporation.

General Notice: Other product names used herein are for identification purposes only and may be trademarks of their respective owners. EPSON disclaims any and all rights in those marks.

Copyright © 2001 by SEIKO EPSON CORPORATION, Nagano, Japan.



Printed on Recycled Paper.

Declaration of Conformity

According to ISO/IEC Guide 22 and EN 45014

Manufacturer: SEIKO EPSON CORPORATION
Address: 3-5, Owa 3-chome, Suwa-shi,
Nagano-ken 392-8502 Japan

Representative: EPSON EUROPE B.V.
Address: Prof. J. H. Bavincklaan 5 1183
AT Amstelveen
The Netherlands

Declares that the Product:

Product Name: Ink Jet Printer
Model: P954A

Conforms to the following Directive(s) and Norm(s):

Directive 89/336/EEC:
EN 55022 Class B
EN 61000-3-2
EN 61000-3-3
EN 50082-1
IEC 801-2
IEC 801-3
IEC 801-4

Directive 73/23/EEC:
EN 60950

May 1999

H. Horiuchi
President of EPSON EUROPE B.V.

Contents

Contents	5
Safety Instructions	1
ENERGY STAR Compliance	1
For United Kingdom Users	1
Warnings, Cautions, and Notes	3
Printer Parts and Control Panel Functions	5
Paper Handling	9
Loading Plain Paper	9
Loading Special Paper and Other Media	10
Loading Envelopes	14
Using EPSON Photo Paper (4 x 6 inch, 200 x 300 mm) ..	15
Printer Software Introduction	20
Making Changes to Printer Driver Settings	21
Using the Printer Utilities	38
Getting Information Through Online Help	43
Increasing the Print Speed	43
Printer Software Introduction	52
Making Changes to Printer Driver Settings	52
Using the Printer Utilities for Macintosh	72
Replacing Ink Cartridges	74
Replacing an Empty Ink Cartridge	74
Replacing an Old or Damaged Ink Cartridge	79
Checking the Ink Supply	81
Maintenance	85
Checking the Print Head Nozzles	85
Cleaning the Print Head	87
Aligning the Print Head	92
Cleaning the Printer	93
Transporting the Printer	94
Updating Software	95

Diagnosing the Problem	96
Cancelling Printing	100
Print Quality Could Be Better	102
Printouts Are Not What You Expected	106
Printer Doesn't Print	109
Paper Doesn't Feed Correctly	112
Where to Get Help	114
Options and Consumable Products	120

Product Information

Safety Instructions

ENERGY STAR Compliance

As an ENERGY STAR Partner, EPSON has determined that this product meets the ENERGY STAR guidelines for energy efficiency.

The International ENERGY STAR Office Equipment Program is a voluntary partnership with the computer and office equipment industry to promote the introduction of energy-efficient personal computers, monitors, printers, fax machines, and copiers in an effort to reduce air pollution caused by power generation.



For United Kingdom Users

Use of options

EPSON (UK) Limited shall not be liable against any damages or problems arising from the use of any options or consumable products other than those designated as Original EPSON Products or EPSON Approved Products by EPSON (UK) Limited.

Safety information



Warning:

This appliance must be earthed. Refer to the rating plate for voltage and check that the appliance voltage corresponds to the supply voltage.

Important:

The wires in the mains lead fitted to this appliance are coloured in accordance with the following code:

Green and yellow	Earth
Blue	Neutral
Brown	Live

If you have to fit a plug:

As the colours of the mains lead of this appliance may not match coloured markings used to identify the terminals in a plug, please proceed as follows:

The green and yellow wire must be connected to the terminal in the plug which is marked with the letter E or the earth symbol (\perp).

The blue wire must be connected to the terminal in the plug marked with the letter N.

The brown wire must be connected to the terminal in the plug marked with the letter L.

If damage occurs to the plug, replace the cord set or consult a qualified electrician.

Replace fuses only with a fuse of the correct size and rating.

Warnings, Cautions, and Notes



Warnings

must be followed carefully to avoid bodily injury.



Cautions

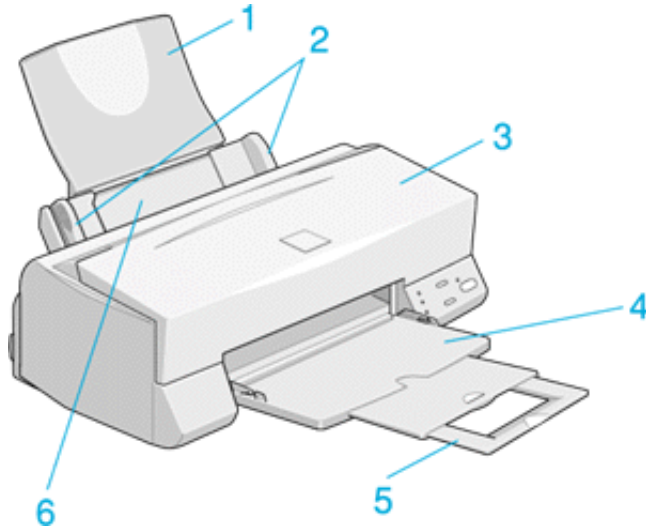
must be observed to avoid damage to your equipment.

Notes

contain important information and useful tips on the operation of your printer.

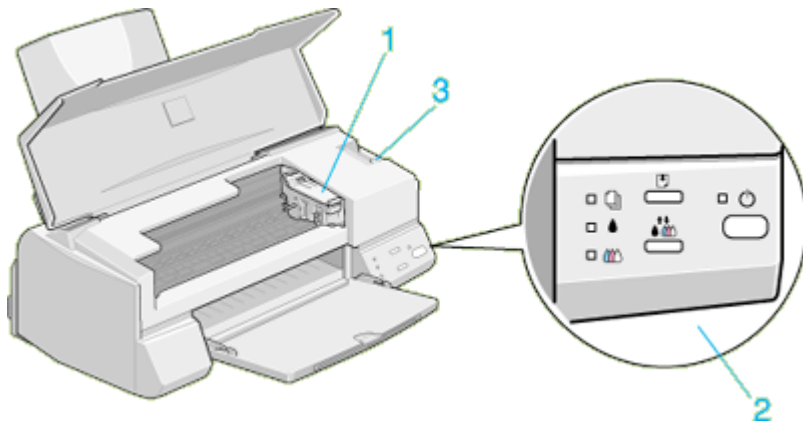
Printer Parts and Control Panel Functions

Printer Parts



1. **Paper support:** Supports the loaded paper.
2. **Edge guides:** Help load the paper straight. Adjust the left edge guide to fit the width of your paper.
3. **Printer cover:** Open only when installing or replacing ink cartridges.
4. **Output tray:** Receives ejected paper.
5. **Output tray extension:** Supports the ejected paper.

6. **Sheet feeder:** Feeds a stack of paper automatically.



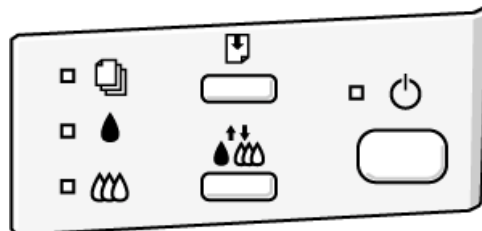
1. **Ink cartridge clamps:** Open only when installing or replacing ink cartridges.

2. **Control panel**




3. **Adjust lever:** Set to “+” position if ink smears on your document when you use thick paper.

Control panel



The control panel consists of buttons and indicator lights, and gives you access to several features. Match the icons on the control panel with those in the charts below.





Buttons

Button	Function
Power 	Turns the printer on and off. Clears the printer's memory if pressed twice while the power is on.
Load/Eject 	Loads or ejects paper if pressed and released within 2 seconds. Resumes printing if pressed and released after a paper out error.
Cleaning 	Moves the print head to the ink cartridge replacement position if pressed for 3 seconds while the black or color ink out light is flashing or on. Returns the print head to its home position after ink cartridge replacement. Performs print head cleaning if pressed for 3 seconds when the black or color ink out light is off.

Lights

Light	Printer Status
Power 	On when the printer is on. Flashes when receiving data, printing, replacing an ink cartridge, charging ink, or cleaning the print head.
Paper out 	On when the printer is out of paper. Load paper in the sheet feeder, then press the load/eject button to resume printing. Flashes when the paper is jammed. Take all of the paper out of the feeder, then reload the paper. If the light continues to flash, turn off the printer and gently pull all the paper out of the printer.

<p>Black ink out</p> 	<p>Flashes when the black ink cartridge is nearly empty. On when the black ink cartridge is empty. Replace the black ink cartridge (S020187).</p>
<p>Color ink out</p> 	<p>Flashes when the color ink cartridge is nearly empty. On when the color ink cartridge is empty. Replace the color ink cartridge (S020191).</p>

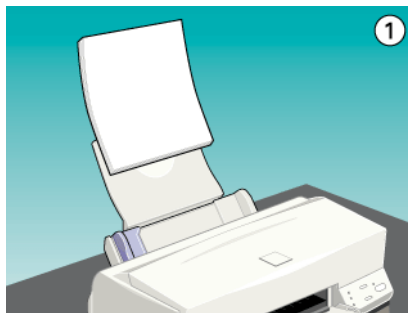
How To

Paper Handling

Loading Plain Paper

Follow these steps to load plain paper in the printer.

1. Lower the output tray and slide out the extension. Next, slide the left edge guide so that the distance between the edge guides is slightly wider than the width of your paper.
2. Fan a stack of paper; then tap it on a flat surface to even the edges.
3. Load the stack of paper with the printable side up and the right edge of the paper resting against the right side of the sheet feeder. Then slide the left edge guide against the left edge of the paper.



Note:

- ❑ Always load paper into the sheet feeder short edge first.

- ❑ *Make sure the paper stack fits under the arrow mark inside the edge guide.*

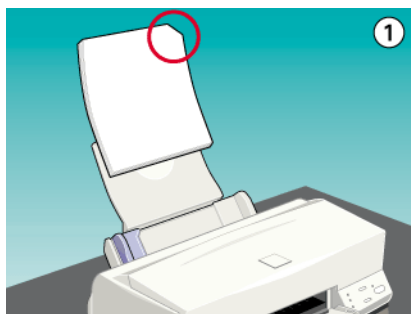
Loading Special Paper and Other Media

You can achieve good results with most plain bond paper. However, coated paper and glossy film result in higher quality printouts because these media absorb smaller amounts of ink.

EPSON provides special media that are formulated for the ink used in EPSON ink jet printers. EPSON recommends using media distributed by EPSON to ensure high-quality results. See “EPSON special media” for a complete list of these products.

When loading special paper distributed by EPSON, read the instruction sheets packed with your special media first and keep the following points in mind.

- ❑ Make sure the printable side of the paper is facing up when loading media into the sheet feeder. See the instruction sheets packed with the media to determine which side is the printable surface. Some media have cut corners to help identify the correct loading direction, as shown in the illustration.



Note:

If you extend the printable area with the Maximum setting in the printer driver, the cut corner on special paper may mar your printout.

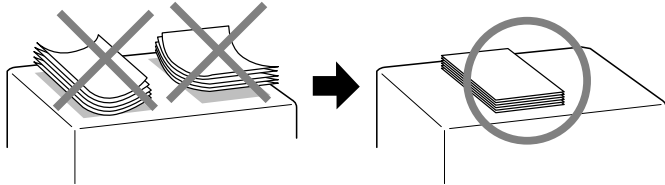
- ❑ Make sure the paper stack fits under the arrow mark located on the inside surface of the left edge guide.

❑ Loading capacity for envelopes and EPSON special media is explained below.

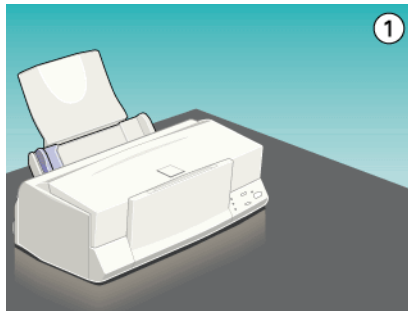
Envelopes	Up to 10 envelopes. Note: If the total thickness of the stack of envelopes exceeds 10 mm, press each envelope flat before loading.
360 dpi Ink Jet Paper and Photo Quality Ink Jet Paper	Up to the arrow mark on the left edge guide.
Photo Quality Ink Jet Card, Ink Jet Note Card, and Ink Jet Greeting Card	Up to 30 index cards. Always place the included support sheet* under the cards.
Photo Quality Glossy Film	One sheet at a time for best results. Always put a support sheet* or a sheet of plain paper under the glossy film. If you wish to load multiple sheets, load a maximum of 20 sheets and set the minimum top margin of the page to 30 mm.
Ink Jet Transparencies	Up to 30 transparencies. Always put a sheet of plain paper under the stack of transparencies.
Photo Quality Self Adhesive Sheet	One sheet at a time.
Photo Paper	Up to 20 sheets of 4 × 6 inch Photo Paper. Always put a support sheet* under the stack of Photo Paper. 200 × 300 mm Photo Paper can only be loaded 1 sheet at a time.
Photo Stickers 16 and Photo Stickers 4	One sheet at a time. Always put the included Support Sheets A and B under the stack of Photo Stickers.
Panoramic Photo Paper and Iron-On Cool Peel Transfer Paper	One sheet at a time.
Matte Paper-Heavyweight	Up to 20 sheets. Always put a support sheet* under the stack of Matte Paper-Heavyweight.

* Take care not to print on support sheets loaded under special media.

- ❑ If the paper is curled, make sure to flatten it or curl it slightly toward the opposite side before loading. Printing on curled paper may smear your printout, especially when printing with Maximum selected as the Printable Area setting.



- ❑ If ink smears on your documents when printing on thick media, set the adjust lever to the “+” position. To change the setting, open the printer cover and position the lever as shown in the illustration.



Note:

- ❑ Return the adjust lever to the “0” position before printing on media of normal thickness. Leaving the lever in the “+” position may cause gaps in the printed image.
- ❑ When the adjust lever is in the “+” position, make sure the High Speed setting in the printer driver’s Advanced dialog box is off. To turn this option off, you may also need to change the Print Quality setting.

If you wish to print on the reverse side of an Ink Jet Card with Maximum selected as the Printable Area setting, flatten the cards or curl them slightly toward the opposite side before loading. Set the adjust lever to the “+” position before printing.

About special media cleaning sheets

Cleaning sheets packaged with EPSON special media should not be used with this printer. The cleaning function performed by these sheets is not necessary with this type of printer, and the sheets could jam in the printer.

Loading Envelopes

When printing on envelopes, please note the following:

- You can load up to 10 envelopes into the sheet feeder.

Note:

The folding quality and thickness of envelopes varies widely. If the total thickness of the stack of envelopes exceeds 10 mm, press each envelope in the stack flat before loading.

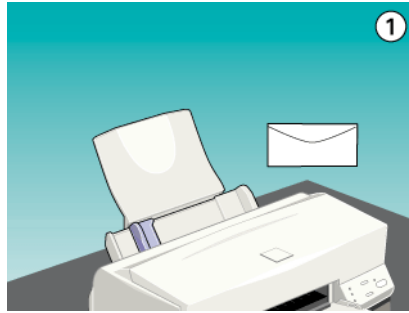
- Set the adjust lever to the “+” position. To do this, open the printer cover and reposition the lever.

Note:

- Return the adjust lever to the “0” position, which is the normal position, after you finish printing on envelopes. Leaving the lever in the “+” position may cause gaps to appear in images printed on other media.*

- When the adjust lever is in the “+” position, make sure the High Speed setting in the printer driver’s Advanced dialog box is off. To turn this option off, you may also need to change the Print Quality setting.*

- ❑ Load envelopes flap edge first with the flap side down, as shown in the illustration.



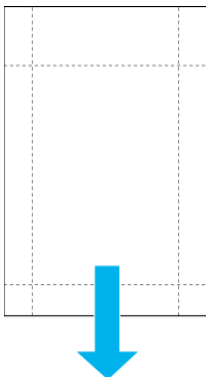
- ❑ Do not use envelopes that are curled or folded. Make sure to flatten the envelope flaps before loading. Also avoid using envelopes that are too thin; they may curl during printing.
- ❑ Select Plain Paper as the Media Type setting on the printer driver.

Using EPSON Photo Paper (4 x 6 inch, 200 x 300 mm)

EPSON Photo Paper (S041134, S041254) is perforated around the margins so you can trim your printed images to look like 4 × 6 inch (102 × 152 mm) or 200 × 300 mm photographs. Note the following when using Photo Paper.

Loading

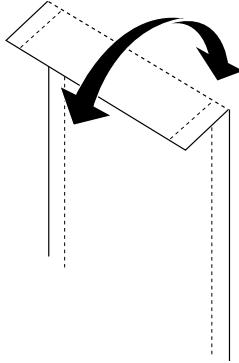
- ❑ Load the paper printable side up with the perforated margins positioned as shown in the illustration.



- ❑ Use flat, undamaged paper. If the paper or the support sheet is curled, flatten it before loading to avoid paper feeding problems.
- ❑ Always place the included support sheet under the stack of Photo Paper, but do not print on it.
- ❑ You can load up to 20 sheets of 4 × 6 inch Photo Paper or 1 sheet of 200 × 300 mm Photo Paper into the sheet feeder.
- ❑ Cut or tear the paper at the perforation only after printing. Do not cut, tear, or fold the paper before printing.
- ❑ Select Photo Paper as the Media Type setting and Photo Paper 4X6 in or Photo Paper 200X300 mm as the Paper Size setting in your printer driver.

Removing the perforated margins

- ❑ To remove the perforated margins, fold the paper back and forth a few times along the perforations, then carefully tear the margins off.

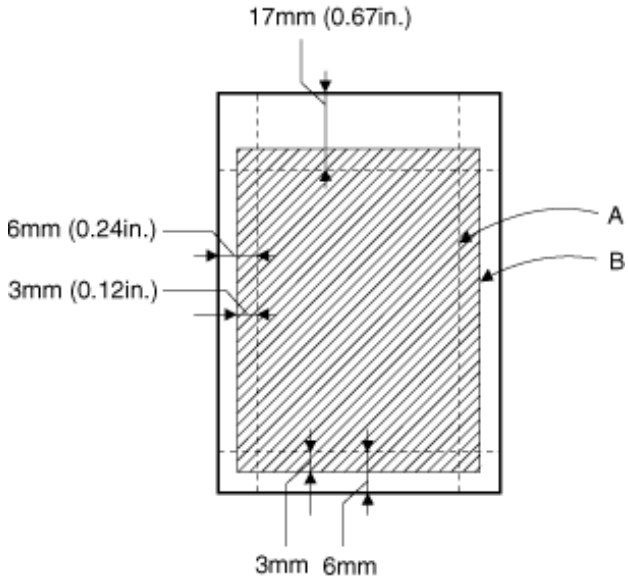


- ❑ You can also remove the margins by cutting along the perforations.

Note:

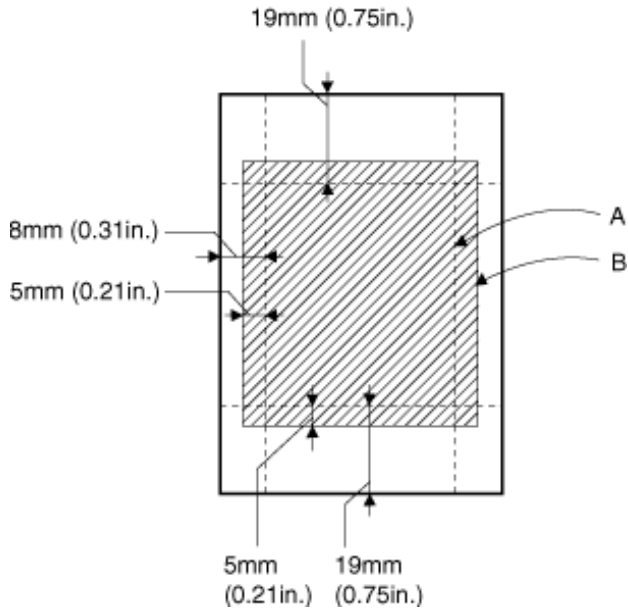
Keep in mind that the edges of your image might be cut off when you remove the perforated margins. See the illustration below.

4 × 6 inch



- A: trimmed size
- B: printed image size

200 × 300 inch



- A: trimmed size
- B: printed image size

Storing EPSON Photo Paper

- Return unused paper to the original package as soon as you finish printing, and avoid storing it in places exposed to high temperature, humidity, or direct sunlight.
- EPSON recommends storing your printouts in a resealable plastic bag and keeping them away from high temperature, humidity, and direct sunlight.

Printing with Windows

Printer Software Introduction

The printer software includes a printer driver and printer utilities. The printer driver lets you choose from a wide variety of settings to get the best results from your printer. The printer utilities help you check the printer and keep it in top condition.

Getting more information

For information on using the printer driver, see “Making Changes to Printer Driver Settings”.

For information on using the printer utilities, see “Using the Printer Utilities”.

Note:

The specific features available in the printer software vary depending on the version of Windows you are using.

Online help provides more information about the printer software. See “Getting Information Through Online Help” for instructions on accessing help.

Accessing the printer software

You can access the printer software from most Windows applications, or from the Windows Start menu.

When you access the printer software from a Windows application, the settings you make apply only to the application you are using.

When you access the printer software from the Start menu, the settings you make apply to all of your Windows applications.

From Windows applications

Open the File menu and choose Print or Print Setup. Then click Printer, Setup, Options, or Properties. (Depending on your application, you may need to click a combination of these buttons.) The printer software window appears.

From the Start menu

1. Click Start, point to Settings, then click Printers.
2. For Windows 95 and 98, select your printer, then click Properties on the File menu. For Windows NT 4.0, select your printer, then click Document Defaults on the File menu. The printer software window appears.

Making Changes to Printer Driver Settings

The printer software features the following printer driver setting menus.

Main Media Type, Ink, Mode

Paper Paper size, Copies, Orientation, Printable Area

Layout Reduce/Enlarge, Multi-Page, Watermark

The Mode options on the Main menu are arranged to give you four levels of control over the printer driver, as explained below.

Automatic	The quickest and easiest way to start printing. See "Using the Automatic mode".
PhotoEnhance	Lets you apply a variety of image-correction settings specially designed for photos. See "Using the Photo Enhance mode".

Custom	Choose from a list of ready-made settings suited to the kind of document you want to print. You can also add your own settings to this list. See "Using the Custom mode".
Advanced	Allows you to make detailed settings to fit your individual needs. You can also add your settings to the Custom Settings list. See "Using the Advanced settings".

In addition to making groups of settings that affect overall print quality, you can also modify individual aspects of the print style and layout using the Paper and Layout menus. See "Modifying the printout style".

Making the Media Type setting

The Media Type setting determines what other settings are available, so you should always make this setting first.

On the Main menu, select the Media Type setting that matches the paper you loaded in the printer. Find your paper in the list below, then select a corresponding Media Type setting (shown in bold). For some kinds of paper, you have several Media Type settings to choose from.

Plain Paper

Plain paper

Envelopes

EPSON Premium Ink Jet Plain Paper (A4) S041214

360 dpi Ink Jet Paper

EPSON 360 dpi Ink Jet Paper (A4) S041059
S041025

EPSON 360 dpi Ink Jet Paper (Letter) S041060
S041028

EPSON Iron-On Cool Peel Transfer Paper (A4) S041154

EPSON Iron-On Cool Peel Transfer Paper (Letter) S041153
S041155

Photo Quality Ink Jet Paper

EPSON Photo Quality Ink Jet Paper (A4) S041061
S041026

EPSON Photo Quality Ink Jet Paper (Letter) S041062
S041029

EPSON Photo Quality Ink Jet Paper (Legal) S041067
S041048

EPSON Photo Quality Ink Jet Card (A6) S041054

EPSON Photo Quality Ink Jet Card (5 × 8") S041121

EPSON Photo Quality Ink Jet Card (8 × 10") S041122

EPSON Photo Quality Self Adhesive Sheet (A4) S041106

EPSON Ink Jet Note Cards A6 (with envelopes) S041147

EPSON Ink Jet Greeting Cards 5 x 8" (with envelopes) S041148

EPSON Ink Jet Greeting Cards 8 x 10" (with envelopes) S041149

Photo Paper

EPSON Photo Paper (A4)	S041140
EPSON Photo Paper (Letter)	S041141
EPSON Photo Paper (4 × 6")	S041134
EPSON Photo Paper (100 × 150 mm)	S041255
EPSON Photo Paper (200 × 300 mm)	S041254
EPSON Panoramic Photo Paper (210 × 594 mm)	S041145
EPSON Photo Paper Cards (A4)	S041177

Photo Quality Glossy Film

EPSON Photo Quality Glossy Film (A4)	S041071
EPSON Photo Quality Glossy Film (Letter)	S041072
EPSON Photo Quality Glossy Film (A6)	S041107
EPSON Photo Stickers 16 (A6)	S041144
EPSON Photo Stickers 4 (A6)	S041176

Ink Jet Transparencies

EPSON Ink Jet Transparencies (A4)	S041063
EPSON Ink Jet Transparencies (Letter)	S041064

Matte Paper-Heavyweight

EPSON Matte Paper-Heavyweight (A4)	S041256
	S041258
	S041259

Note:

The availability of special media varies by location.

Using the Automatic mode

When Automatic is selected on the Main menu, the printer driver takes care of all detailed settings based on the current Media Type and Ink settings. To make the Ink setting, click **COLOR** to print in color, or **BLACK** to print in black-and-white or grayscale. To make the Media Type setting, see “Making the Media Type setting”.



Note:

- Depending on the media you choose in the Media Type list (while Automatic is selected), a slide bar appears in the Mode box that lets you choose Quality or Speed. Select Quality when print quality is more important than speed.
- Most Windows applications feature paper size and page layout settings that override similar settings on the printer driver. However, if your application does not have these settings, verify the settings on the printer driver's Paper menu.

Using the Photo Enhance mode

The Photo Enhance option provides a variety of image-correction settings that you can apply to your photo images before printing. Photo Enhance does not affect your original data.

If you are printing photos taken with a digital camera, you can also select the Digital Camera Correction check box to give your printed images the smooth, natural appearance of photographs taken with a film camera.

Note:

- This mode is available only when you are printing in color.*
- Printing with Photo Enhance selected may increase print time depending on your computer system and the amount of data contained in your image.*

The Photo Enhance mode provides the following settings.

Standard	Standard image correction for most photos. Try this setting first.
People	Best for photos of people.
Nature	Best for outdoor scenery such as mountains, skies, and oceans.
Soft Focus	Makes your photos look as if they were taken with a soft-focus lens.
Sepia	Applies a sepia tone to your photos.

Using the Custom mode

The Custom mode offers ready-made settings designed for printing text and graphs and for applying a color-matching method. You can also create and save your own Custom settings. See “Using the Advanced settings” for details.

The Custom mode provides the following ready-made settings.

Text/Graph	Good for printing presentation documents such as graphs and charts.
Economy	Good for printing drafts of text
ICM (For Windows 95 and 98)	ICM means Image Color Matching. This feature automatically adjusts printout colors to match colors on your screen.
sRGB	Best for color matching with other sRGB devices.

Follow the steps below to select a Custom setting.

1. Click the Custom button on the Main menu.
2. Click anywhere in the list box to open it, then select the most appropriate setting for the type of document or image you will print.
3. When you choose a Custom setting, other settings such as Print Quality, Halftoning, and Color Adjustment are set automatically. Changes are shown in the display on the left side of the Main menu.
4. Before printing, be sure to verify the Media Type and Ink settings, as they may be affected by the Custom setting you select. See “Making the Media Type setting”.

Using the Advanced settings

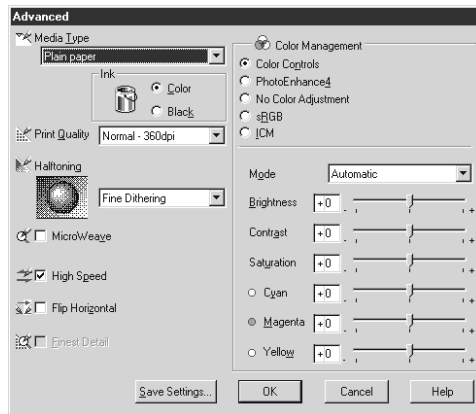
The Advanced settings give you complete control over your printing environment. Use these settings to experiment with new printing ideas, or to fine-tune a range of print settings to meet your individual needs. Once you are satisfied with your new settings, you can give them a name and add them to the Custom settings list.

Follow the instructions below to make and save Advanced settings.

Note:

The printer driver screens that appear in this procedure are for Windows 95 and 98. The Windows NT 4.0 printer driver screens differ only slightly.

1. Click the Custom button on the Main menu and then click Advanced. The following dialog box appears.

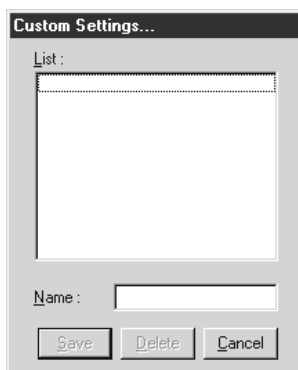


2. Select the Media Type you loaded in the printer. For details, see “Making the Media Type setting”.
3. Choose Color or Black as the Ink setting.
4. Select the Print Quality setting.
5. Make other settings as necessary. For details, see online help.

Note:

- ❑ *The Photo Enhance 4 setting under the Color Management option only affects images, not text or graphs. For example, if Monochrome is selected from the Tone list, only the images in a document will be printed in monochrome. Any colored text or graphs in the same document will be printed in color.*
 - ❑ *Some settings may be disabled depending on the Media Type, Ink, and Print Quality settings you make.*
6. Click OK to apply your settings and return to the Main menu. If you want to return to the Main menu without applying your settings, click Cancel.

To save your Advanced settings, click Save Settings in the Advanced dialog box. The Custom Settings dialog box appears.



Type a unique name for your settings in the Name box, and click Save. Your settings will be added to the Custom Settings list.

Note:

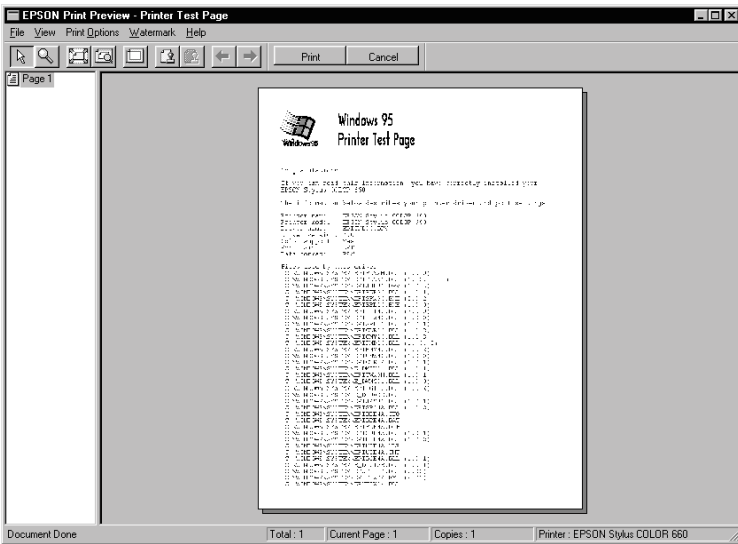
- ❑ *You cannot use the names of settings provided by EPSON for your custom settings.*
- ❑ *To delete a setting, select the setting in the Custom Settings dialog box and click Delete.*

- You cannot delete the ready-made settings from the Custom Settings list.

When you select your saved settings in the Custom Settings list, be aware that making new settings (for example Media Type and Ink settings) may change your custom settings. This may cause unexpected results in your printout. If this happens, reselect your saved settings and try printing again.

Previewing your printout

To see a preview of your document before printing it, select the Print Preview check box on the Main menu. When you select the Print option in your application, the Print Preview window appears:



You can manipulate the previewed document in the following ways:

- Select and preview individual pages.

- Reduce or enlarge the size of the preview.
- Select and print any or all pages.
- Apply watermarks. The watermark you select will appear in the previewed image. For detailed information on customizing watermarks, see “Printing a watermark on your document”.

After you have previewed the document, click **Print** to print the document, or click **CANCEL** to cancel printing.

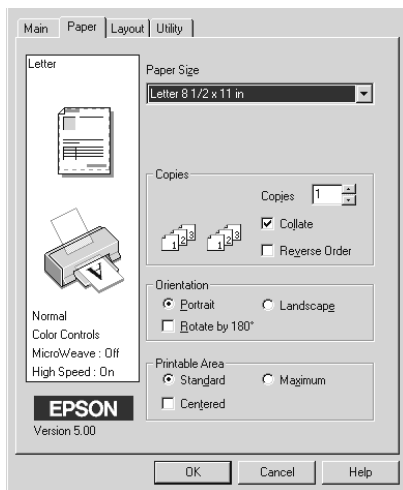
Modifying the printout style

You can modify your printout style using a variety of printer driver settings located on the **Paper** and **Layout** menus.

On the **Paper** menu, you can make settings for the paper size, the number of copies, the orientation of your printout, and the printable area. On the **Layout** menu, you can automatically match the document size to the paper size, print 2 or 4 pages on a single sheet, print poster-size images by enlarging one page to cover several sheets, or place watermarks on documents.

Using the Paper menu settings

Use the Paper menu to change the paper size, set the number of copies and other copy parameters, specify the paper orientation, and adjust the printable area.



You can make the following settings:

Paper Size	Select the paper size you want to use. You can also add a custom paper size.
Copies	Select the number of copies you wish to print. You can select Collate (print a set at a time) or Reverse Order to determine the order in which you print multiple copies of your document:
Orientation	Select Portrait (tall) or Landscape (wide) to change the orientation of your printout. If you need to print closer to the bottom of the page, select the Rotate by 180° check box.

<p>Printable Area</p>	<p>Use the options in the Printable Area box to adjust the total area available for printing. If you want to center the printout, click Center. If you need to increase the printable area, click Maximum.</p> <p>Note: When Maximum is selected, the print quality may decline at the edges of the printout. Before printing large jobs using this setting, print a single sheet to confirm quality. When Maximum is selected, make sure the paper loaded in the sheet feeder is not curled.</p>
------------------------------	--

Fitting your document to the paper size

To fit the size of your document to the size of the paper you will print on, use the Reduce/Enlarge options on the Layout menu.



You can select the following.

<p>Normal</p>	<p>Prints your document at its normal size.</p>
<p>Fit to Page</p>	<p>Proportionally enlarges or reduces the size of your document to make it fit the paper size you select in the Paper Size list on the Paper menu.</p>

Custom	Allows you to manually reduce or enlarge an image. Click the arrows next to the Proportion box to select a percentage from 10% to 400%.
---------------	---

Printing 2 or 4 pages on one sheet

To print 2 or 4 pages of your document on one sheet of paper, use the Multi-Page option on the Layout menu.

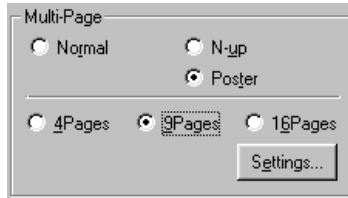


Select N-up as the Multi-Page option, then make the following settings.

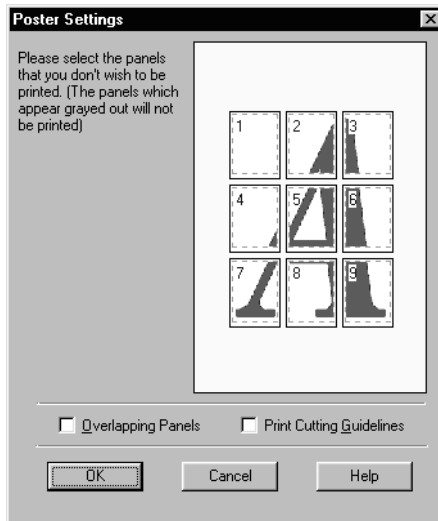
2 Pages 4 Pages	Prints 2 or 4 pages of your document on a single piece of paper.
Page Order	Allows you to specify the order in which the pages will be printed on the sheet of paper.
Print page frames	Allows you to print a frame around each page on the sheet of paper.

Printing posters

You can use the Poster setting in the Multi-Page option to print a poster-size image. A single document page can be enlarged to cover 4, 9, or 16 printed sheets of paper.



To adjust the way your poster will print, click the Settings button. The Poster Settings dialog box appears.



You can make the following settings.

Overlapping Panels	Slightly overlaps the images so that they can be aligned more precisely.
Print Cutting Guidelines	Prints border lines on the images to guide you when trimming the pages.

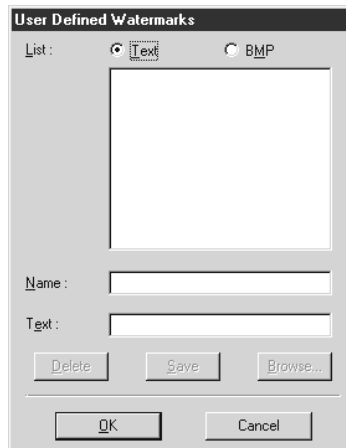
If you only want to print a few of the panels without printing the entire poster, click the panels you don't wish to print, then click OK to close the Poster Settings dialog box.

Printing a watermark on your document

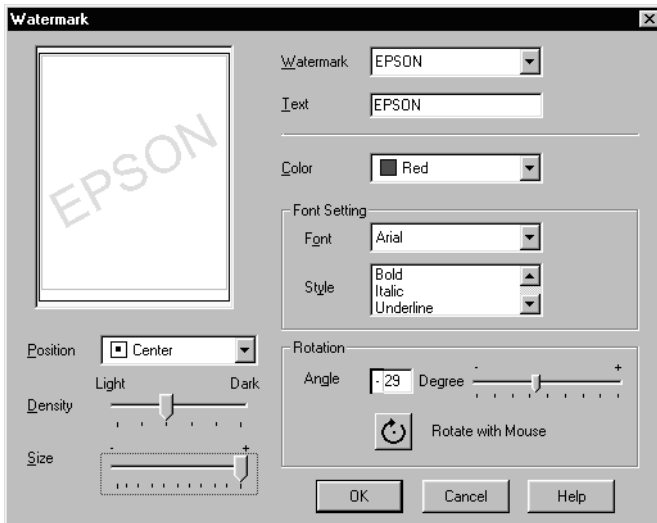
To print a watermark on your document, on the Layout menu, click anywhere in the Watermark list box to open it, and select from the list of predefined watermarks.

You can also add your own text-based or image-based watermarks to the Watermark list. Follow these steps.

1. Click the Add/Del button. The following dialog box appears.



2. To use an image file as a watermark, select BMP. Click the Browse button to select the bitmap file you want to use, then click OK. To create a text-based watermark, select Text, then type your text in the Text box.
3. Type a name for your watermark in the Watermark box, then click Save. Click OK to return to the Layout menu.
4. To make settings for your watermark, click the Settings button. The following dialog box appears.

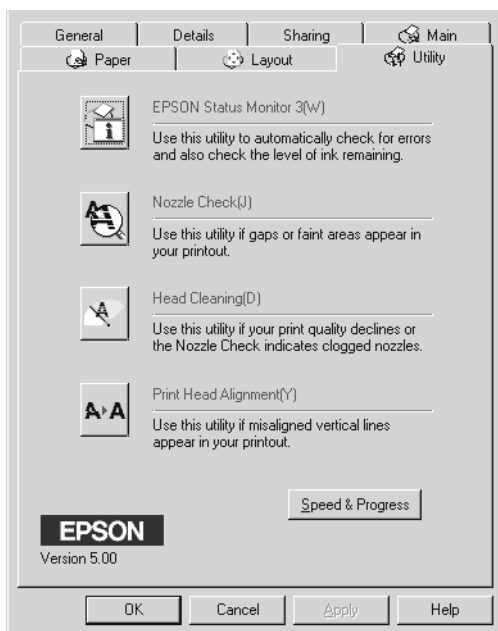


5. From the Watermark list box, select the watermark you want to make settings for, then make color, position, density, and size settings. Your settings appear on the left side of the dialog. After you make settings, click OK.

Using the Printer Utilities

EPSON printer utilities allow you to check the current printer status and to perform some printer maintenance from your computer screen.

To use the utilities, click the Utility tab in the printer software window, then click the button for the utility you wish to use. For information on how to access the printer software, see “Accessing the printer software”.



Note:

- The letter in parentheses after the utility name indicates the shortcut key for that utility. Press Alt and the letter on the keyboard to open that utility.

- ❑ *Do not use the Nozzle Check, Head Cleaning, and Print Head Alignment utilities with printers connected to your computer through a network.*
- ❑ *Do not use the Nozzle Check, Head Cleaning, and Print Head Alignment utilities while printing is in progress; otherwise, your printout may be marred.*

Status Monitor 3

Provides you with printer status information, such as the amount of ink remaining, and checks for printer errors.

This utility is available only when:

- ❑ The printer is connected directly to the host computer via the parallel port [LPT1], and
- ❑ Your system is configured to support bidirectional communication.

Nozzle Check

Checks the print head nozzles for clogging. Check the nozzles if you notice print quality has declined and after cleaning to confirm that the print head nozzles have been cleared. If the nozzle check indicates the print head needs cleaning, you can access the Head Cleaning utility directly from the Nozzle Check utility. See “Checking the Print Head Nozzles”.

Head Cleaning

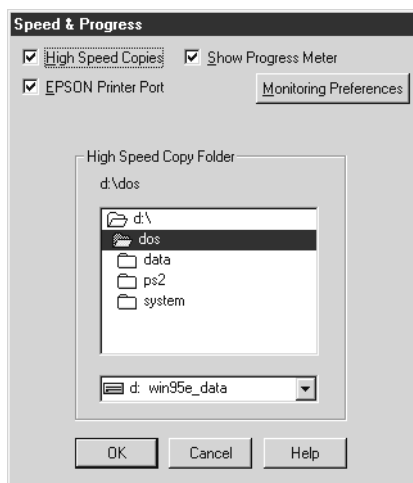
Cleans the print head. You may need to clean the head when you notice print quality has declined. Use the Nozzle Check utility first to confirm that the head needs to be cleaned. You can access the Nozzle Check utility directly from the Head Cleaning utility. See “Cleaning the Print Head”.

Print Head Alignment

Aligns the print head. Use this utility if you notice a misalignment of vertical lines.

Speed & Progress

You can make settings related to print speed and progress with this feature.



High Speed Copies

To print multiple copies of your document faster, select High Speed Copies.

Show Progress Meter

To monitor the progress of your print, select Show Progress Meter.

EPSON Printer Port (For Windows 95 and 98 only)

To speed up the data transfer rate to EPSON printers, select EPSON Printer Port.

If your computer supports ECP mode, enable DMA transfer to speed up printing.

For more details, see “Using Speed & Progress”.

Always Spool Raw Datatype (For Windows NT only)

Select this check box to have Windows NT-based clients spool documents using the RAW format instead of the EMF (metafile) format (Windows NT-based applications use the EMF format by default).

Try using this option if documents spooled in EMF format do not print correctly.

Spooling RAW datatype requires less resources than EMF, so some of problems (“Insufficient Memory/Disk Space to Print”, “Slot print speed”, etc.) can be solved by selecting the “Always spool RAW datatype” check box.

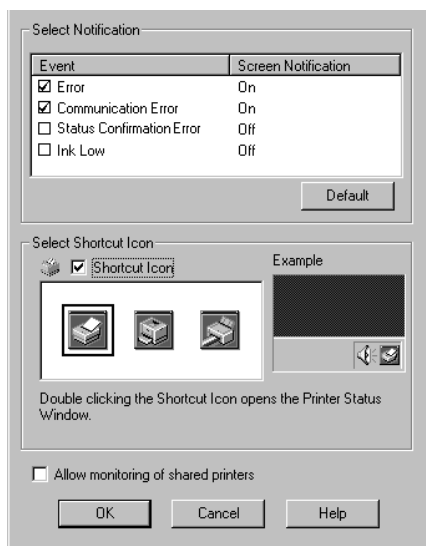
When spooling RAW datatype, print progress as displayed by the Progress Meter may differ from actual print progress.

Monitoring Preferences

Click this button to open the Monitoring Preferences dialog box where you can make settings for EPSON Status Monitor 3. The settings are described in detail in the next section.

Monitoring Preferences

When you click the Monitoring Preferences button, the following dialog box appears.



You can make the following settings:

Select Notification	Displays the current error item notification settings. Select the appropriate check boxes to specify the error types for which you wish to receive notification.
Select Shortcut Icon	Select the Shortcut Icon check box to have a shortcut icon placed in your Windows taskbar. Clicking the shortcut icon in the taskbar will open EPSON Status Monitor 3. To select which icon will be displayed, click the icon your prefer from the choices given; your selection will be shown at the right.
Allow monitoring of shared printer	When this check box is selected, a shared printer can be monitored by other PCs.

Note:

Click the Default button to revert all items to the default settings.

Getting Information Through Online Help

Your printer software has an extensive online help feature, which provides you with instructions on printing, making printer driver settings, and using printer utilities.

Accessing help from your application

Open the File menu and choose Print or Print Setup. Then click Printer, Setup, Options, or Properties. (Depending on your application, you may need to click a combination of these buttons.) Click Help at the bottom of the Main, Paper, Layout, and Utility menus for help related to the items on that menu.

You can get specific help related to any item on a menu by right-clicking the item, then clicking the What's This? prompt.

Accessing help from the Start menu

Click the Start button, point to Programs and Epson (for Windows 95 and 98) or EPSON Printers (for Windows NT 4.0), then click EPSON Stylus COLOR 660 Help. The help contents window appears.

Increasing the Print Speed

General tips

Just as printing at a high resolution requires more processing time, printing in color takes longer than printing in black because the volume of data in a color document is much greater. For this reason, it is important to be selective in your use of color if you also require a faster print speed.

However, even if your document requires the highest resolution and extensive use of color, for example when you are printing a camera-ready composite that includes color photographs, it may still be possible to optimize the print speed by adjusting other printing conditions. Keep in mind that changing some conditions to increase the print speed may also lower print quality.

The following table shows the factors that inversely affect print speed and print quality (increasing one will decrease the other).

Print quality Print speed	Lower Faster	Higher Slower
Printer driver settings		
Print Quality	Economy, Normal	Super Fine
High Speed	On	Off
Halftoning	No Halftoning	Error Diffusion
Finest Detail	Off	On
Data characteristics		
Image size	Small	Large
Resolution	Low	High

The table below shows the factors related to print speed only.

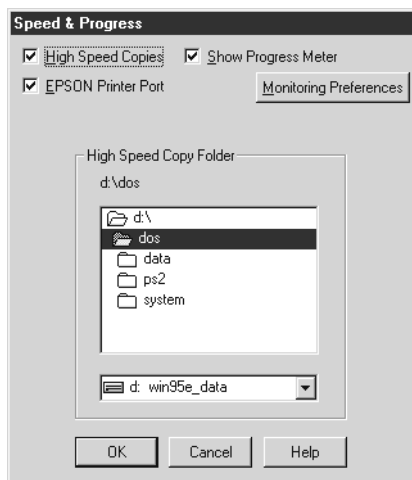
	Print speed	
	Faster	Slower
Printer driver settings		
Ink	Black	Color
Collate*	Off	On
Flip Horizontal*	Off	On
Reverse Order*	Off	On
Data characteristics		
Variety of colors	Grayscale**	Full color
Hardware resources		
System speed	Fast	Slow
HDD free space	Large	Small
Memory free space	Large	Small
Software status		
Running applications	One	Many
Virtual memory	Not in use	In use

* Varies depending on the printer driver and application software you are using.

** Grayscale means using black ink only to print varying shades of gray, from pure black to pure white.

Using Speed & Progress

You can make certain print speed settings in the Speed & Progress dialog box. Click the Speed & Progress button on your printer software's Utility menu. The following dialog box appears.



High Speed Copies

Select to turn on high-speed printing for multiple copies. This speeds up printing by using your hard disk space as a cache when printing multiple copies of your document.

Show Progress Meter

Select to display the printing progress on the computer screen while printing.

EPSON Printer Port (For Windows 95 and 98 only)

Select to enable the EPSON printer port, which is optimized for EPSON printers, instead of the Windows default printer port. This speeds up the data transfer rate to EPSON printers.

Always Spool Raw Datatype (For Windows NT only)

Select this check box to have Windows NT-based clients spool documents using the RAW format instead of the EMF (metafile) format (Windows NT-based applications use the EMF format by default).

Try using this option if documents spooled in EMF format do not print correctly.

Spooling RAW datatype requires less resources than EMF, so some of problems (“Insufficient Memory/Disk Space to Print”, “Slot print speed”, etc.) can be solved by selecting the “Always spool RAW datatype” check box.

When spooling RAW datatype, print progress as displayed by the Progress Meter may differ from actual print progress.

Monitoring Preferences

Click this button to open the Monitoring Preferences dialog box where you can make settings for EPSON Status Monitor 3. For a detailed description of the available settings, see “Monitoring Preferences”.

To enable DMA transfer (For Windows 95 and 98 only)

If your computer has a parallel port which supports ECP mode, you can enable DMA transfer to speed up printing. See your computer manual to determine if it supports ECP mode and DMA transfer.

To determine whether you need to enable DMA transfer, compare the message below the EPSON Printer Port check box to this table, and take the recommended action.

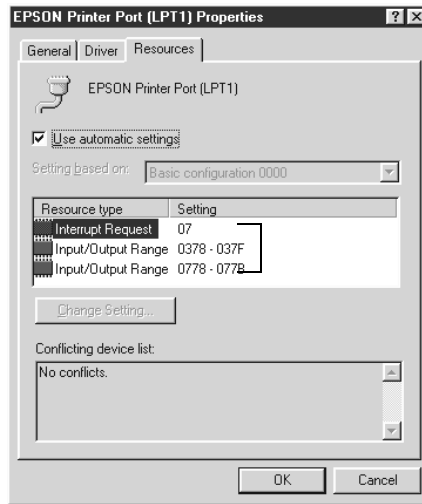
Message	Action
High Speed (DMA) Transfer enabled.	DMA transfer is already enabled. Click OK to close the dialog box.

Message	Action
For higher data transfer rates, use DMA Transfer.	Follow the steps below this table to enable DMA transfer.
(No message)	<p>Your system's parallel port setting does not allow DMA transfer. However, if you change the parallel port setting to ECP or Enhanced using your computer's BIOS Setup program, you may be able to use DMA transfer. Consult your computer manual or computer manufacturer for instructions. Once you change the parallel port setting, follow the steps below this table to enable DMA transfer.</p> <p>Note: Before you run the BIOS Setup program, uninstall the printer driver using Add/Remove Programs in the Control Panel. After running the BIOS Setup program, reinstall the printer driver.</p>

If you need to enable DMA transfer, follow these steps.

1. Double-click the My Computer icon on your desktop, then double-click Control Panel.
2. Double-click the System icon and click the Device Manager tab.
3. Double-click the Ports (COM & LPT) icon and double-click LPT1. If you have connected your printer to a port other than LPT1, double-click the appropriate port icon.

- Click the Resources tab, then deselect the Use automatic settings check box. Write down the Input/Output Range settings shown in the Resource settings box.



- Select a basic configuration setting from the Setting based on list that uses the same Input/Output Range settings as those you wrote down in Step 4, and make sure the Direct Memory Access channel and Interrupt Request numbers are allocated and displayed. Confirm also that the Conflicting Device list box shows No conflicts.
- Click OK to save the settings.
- Reopen the Speed & Progress dialog box to verify whether DMA transfer has been enabled.

Note:

You may not be able to use DMA transfer on some computers even after you make the settings explained above. Consult your computer maker for information on the DMA transfer capability of your computer.

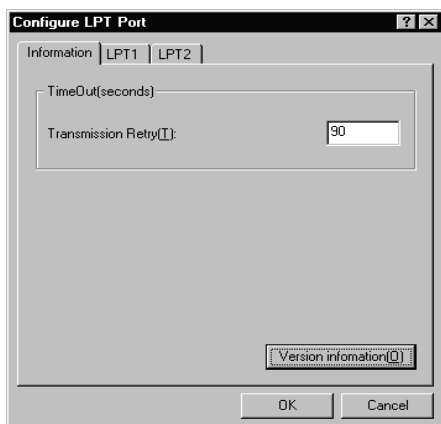
Using Port Configuration (Windows NT 4.0 only)

Note:

Port settings for Windows NT 4.0 are complicated and should only be made by an experienced person with administrative privileges.

If your computer has a parallel port that supports ECP mode, you can make certain print speed settings in the Port Configuration dialog box. Before making settings, make sure that ECP mode has been selected in your computer settings. For details about ECP mode, see your computer manual.

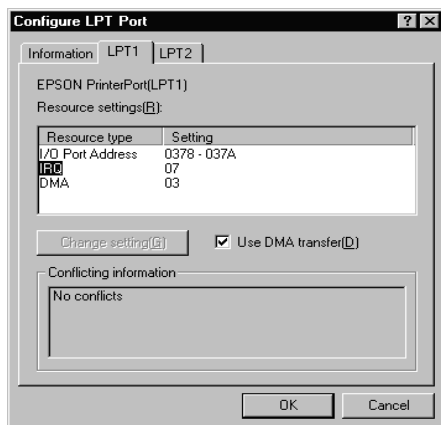
To access the Port Configuration dialog box, click the Start button, point to Settings, and click Printers. Then select your printer and click Properties on the File menu. The printer driver window appears. Click the Ports tab, then click Configure Port. The following dialog box appears.



Click the LPT port tab for the port to which your printer is connected, then click the Port Configuration button.

Note:

If your printer is connected to LPT1, only the LPT1 tab is available.



Resources Settings (IRQ and DMA)

If you have connected your printer to LPT2 or LPT3, making IRQ and DMA settings here may speed up printing. Input the same configuration numbers for IRQ and DMA which you have made with your expansion board. See your computer documentation to determine the settings for IRQ and DMA.

Use DMA transfer

Using DMA transfer to send print data to the computer may help you speed up printing. If the Use DMA Transfer check box is dimmed, you must first enable DMA transfer in your computer settings. For details, see your computer documentation.

Printing with Macintosh

Printer Software Introduction

The printer software includes a printer driver and printer utilities. The printer driver lets you choose from a wide variety of settings to get the best results from your printer. The printer utilities help you check the printer and keep it in top condition.

For information on using the printer driver, see “Making Changes to Printer Driver Settings”.

For information on using the printer utilities, see “Using the Printer Utilities for Macintosh”.

You can get more information about the printer software by clicking the help icon in the printer software dialog boxes.

Making Changes to Printer Driver Settings

You will find the printer driver settings in the following dialog boxes.

- Print dialog box (click Print on the File menu of your application or click Options in the Page Setup dialog box)
- Page Setup dialog box (click Page Setup on the File menu of your application)
- Layout dialog box (click the Layout icon button in the Print dialog box)
- Background Printing dialog box (click the Background Printing icon button located in the Print dialog box)

- ❑ Preview dialog box (click the Preview icon button and then click Preview in the Print dialog box)

The Mode options in the Print dialog box are arranged to give you four levels of control over the printer driver, as explained below.

Automatic	The quickest and easiest way to start printing. See "Using the Automatic settings".
Custom	Choose from a list of ready-made settings suited to the kind of document you want to print. You can also add your own settings to this list. See "Using the Custom mode".
Advanced	Allows you to make detailed settings to fit your individual needs. You can also add your settings to the Custom Settings list. See "Using the Advanced settings".
PhotoEnhance	Lets you apply a variety of image-correction settings specially designed for photos. See "Using the Photo Enhance mode".

In addition to making groups of settings that affect overall print quality, you can also change page setup and layout using the Page Setup and the Layout dialog boxes. For information on page setup options, see "Changing the page setup". For information on page layout options, see "Modifying the layout".

Making the Media Type setting

The Media Type setting determines what other settings are available, so you should always make this setting first.

In the Print dialog box, select the Media Type setting that matches the paper you loaded in the printer. Find your paper in the list below, then select a corresponding Media Type setting (shown in bold). For some kinds of paper, you have several Media Type settings to choose from.

Plain Paper

Plain paper

Envelopes

EPSON Premium Ink Jet Plain Paper (A4) S041214

360 dpi Ink Jet Paper

EPSON 360 dpi Ink Jet Paper (A4) S041059
S041025

EPSON 360 dpi Ink Jet Paper (Letter) S041060
S041028

EPSON Iron-On Cool Peel Transfer Paper (A4) S041154

EPSON Iron-On Cool Peel Transfer Paper (Letter) S041153
S041155

Photo Quality Ink Jet Paper

EPSON Photo Quality Ink Jet Paper (A4) S041061
S041026

EPSON Photo Quality Ink Jet Paper (Letter) S041062
S041029

EPSON Photo Quality Ink Jet Paper (Legal) S041067
S041048

EPSON Photo Quality Ink Jet Card (A6) S041054

EPSON Photo Quality Ink Jet Card (5 × 8") S041121

EPSON Photo Quality Ink Jet Card (8 × 10") S041122

EPSON Photo Quality Self Adhesive Sheet (A4) S041106

EPSON Ink Jet Note Cards A6 (with envelopes) S041147

EPSON Ink Jet Greeting Cards 5 × 8" (with envelopes) S041148

EPSON Ink Jet Greeting Cards 8 × 10" (with envelopes) S041149

Photo Paper

EPSON Photo Paper (A4)	S041140
EPSON Photo Paper (Letter)	S041141
EPSON Photo Paper (4 × 6")	S041134
EPSON Photo Paper (100 × 150 mm)	S041255
EPSON Photo Paper (200 × 300 mm)	S041254
EPSON Panoramic Photo Paper (210 × 594 mm)	S041145
EPSON Photo Paper Cards (A4)	S041177

Photo Quality Glossy Film

EPSON Photo Quality Glossy Film (A4)	S041071
EPSON Photo Quality Glossy Film (Letter)	S041072
EPSON Photo Quality Glossy Film (A6)	S041107
EPSON Photo Stickers 16 (A6)	S041144
EPSON Photo Stickers 4 (A6)	S041176

Ink Jet Transparencies

EPSON Ink Jet Transparencies (A4)	S041063
EPSON Ink Jet Transparencies (Letter)	S041064

Matte Paper-Heavyweight

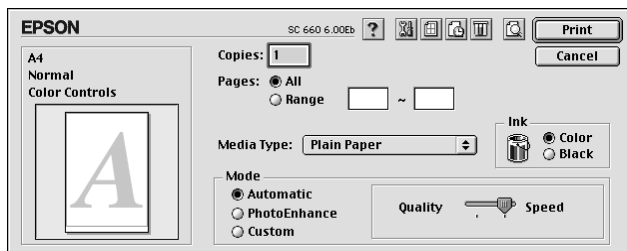
EPSON Matte Paper-Heavyweight (A4)	S041256 S041258 S041259
------------------------------------	-------------------------------

Note:

The availability of special media varies by location.

Using the Automatic settings

When Automatic is selected as the Mode option in the Print dialog box, the printer driver takes care of all detailed settings based on the current Media Type and Ink settings. To make the Ink setting, click Color to print in color, or Black to print in black-and-white or grayscale. To make the Media Type setting, see “Making the Media Type setting” on page 53.



Note:

Depending on the media you choose in the Media Type list while Automatic is selected, a slide bar appears in the Mode box that lets you choose Quality or Speed. Select Quality when print quality is more important than speed.

Using the Photo Enhance mode

The Photo Enhance option provides a variety of image-correction settings that you can apply to your photo images before printing. Photo Enhance does not affect your original data.

If you are printing photos taken with a digital camera, you can also select the Digital Camera Correction check box to give your printed images the smooth, natural appearance of photographs taken with a film camera.

Note:

This mode is available only when you are printing in color.

- ❑ *Printing with Photo Enhance selected may increase print time depending on your computer system and the amount of data contained in your image.*

The Photo Enhance mode provides the following settings.

Standard	Standard image correction for most photos. Try this setting first.
People	Best for photos of people.
Nature	Best for outdoor scenery such as mountains, skies, and oceans.
Soft Focus	Makes your photos look as if they were taken with a soft-focus lens.
Sepia	Applies a sepia tone to your photos.

Using the Custom mode

The Custom mode offers ready-made settings designed for printing text and graphs and for applying a color-matching method. You can also create and save your own Custom settings. See “Using the Advanced settings”.

The Custom mode provides the following ready-made settings.

Text/Graph	Good for printing presentation documents such as graphs and charts.
Economy	Good for printing drafts of text.
ColorSync	This feature automatically adjusts printout colors to match colors on your screen.

Follow these steps to select a Custom setting.

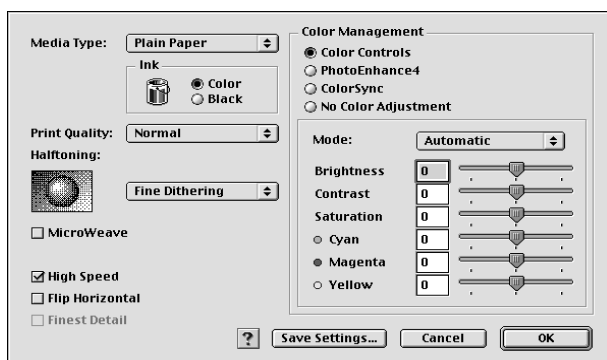
1. Verify the Media Type and Ink settings in the Print dialog box. For details, see “Making the Media Type setting”.

2. Click the Custom button in the Print dialog box. This activates the Custom Settings list, located below and to the right of the Custom radio button.
3. From the Custom Settings list, select the most appropriate setting for the type of document or image you will print.
4. When you choose a Custom setting, other settings such as Print Quality, Halftoning, and Color are set automatically. Changes are shown in the display on the left side of the Print dialog box.

Using the Advanced settings

The Advanced settings give you complete control over your printing environment. Use these settings to experiment with new printing ideas, or to fine-tune a range of print settings to meet your individual needs. Once you are satisfied with your new settings, you can give them a name and add them to the Custom Settings list.

1. Click the Custom button in the Print dialog box, then click the Advanced button. The Advanced dialog box appears.



2. Select the Media Type that you loaded in the printer. For details, see “Making the Media Type setting”.

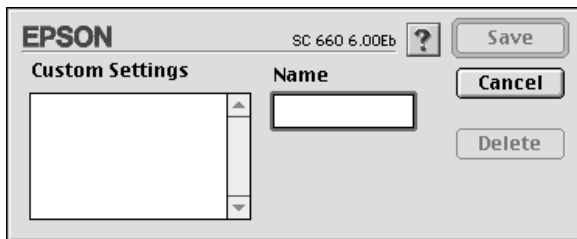
3. Choose Color or Black in the Ink setting.
4. Select the Print Quality setting.
5. Make other settings as necessary. For details, see online help.

Note:

- The Photo Enhance 4 setting under the Color Management option only affects images, not text or graphs. For example, if Monochrome is selected from the Tone list, only the images in a document will be printed in monochrome. Any colored text or graphs in the same document will be printed in color.*
 - Some settings may be disabled depending on the Print Quality, Media Type, and Ink settings you make.*
6. Click OK to apply your settings and return to the Print dialog box. Click Cancel to return to the Print dialog box without applying your settings. To save your Advanced settings, see the next section.

Saving and deleting your settings

To save your Advanced settings, click Save Settings in the Advanced dialog box. The Custom Settings dialog box appears.



Type a unique name (up to 16 characters) for your settings in the Name box, and click Save.

Note:

The names of the ready-made settings provided by EPSON cannot be applied to your new settings.

You can save up to 10 different custom settings. You can select the setting from the Custom Settings list in the Print dialog box.

To delete a setting, select the setting in the Custom Settings dialog box and click Delete.

Note:

You cannot delete the ready-made settings from the Custom Settings list.

Using your saved settings

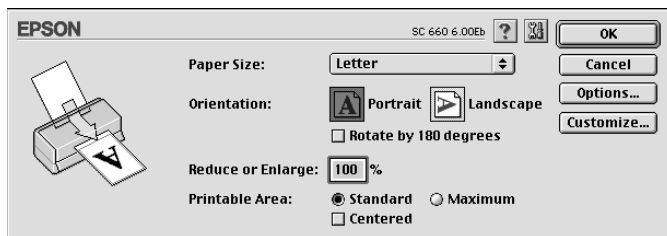
To select your settings, click the Custom button in the Print dialog box, then select your setting in the Custom Settings list, located below and to the right of the Custom button.

If you change the Media Type or Ink settings when one of your customized settings is selected in the Custom Settings list, the selection shown in the list returns to Custom Settings. The customized setting that was previously selected is not affected by the change. To return to your customized setting, simply reselect it in the list.

Changing the page setup

In the Page Setup dialog box, you can change the paper size, specify the orientation of your printout, and adjust the printable area.

Choose Page Setup on the File menu of your application. The Page Setup dialog box appears.



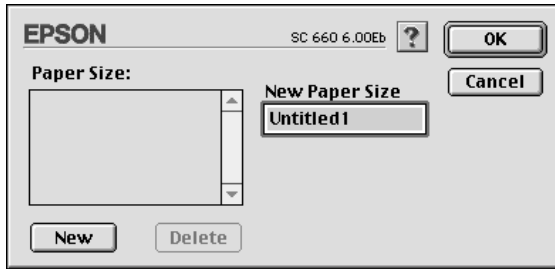
You can change the following settings.

Paper Size	Select the paper size you want to use. If you want to define a custom paper size, see “Defining a custom paper size” on page 61.
Orientation	Select Portrait (tall) or Landscape (wide) to change the orientation of your printout. If you need to print close to the bottom of the page, select Rotate by 180 degrees.
Reduce or Enlarge	Use this setting to reduce or enlarge the size of your image.
Printable Area	<p>Select Maximum to increase the printable area.</p> <p>Note: When Maximum is selected, print quality may decline at the edges of the printout. Before printing large jobs using this setting, print a single sheet to confirm quality. Also, make sure the paper loaded in the sheet feeder is not curled.</p> <p>Click Centered to position your printout at equal distances from the edges of the paper.</p>

Defining a custom paper size

If your paper size is not included in the paper size list in the Page Setup dialog box, follow the steps below to define a custom paper size.

1. In the Page Setup dialog box, click Customize. The following dialog box appears.



2. To define a new paper size, click New. The dialog box updates to allow you to enter a name for the new size.



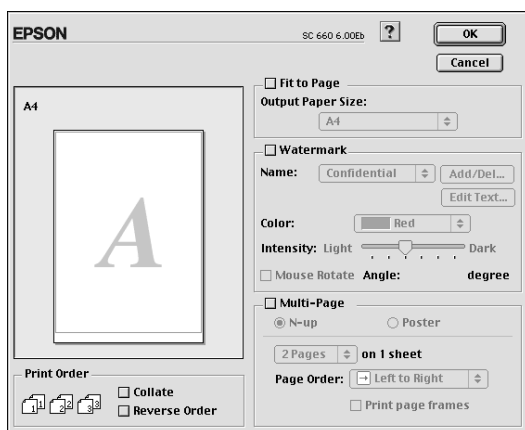
3. Type the paper size name in the New Paper Size box.
4. Specify the measurement unit as either Inches or cm.
5. Enter the width and the height of your paper.
6. Click OK. You return to the Page Setup dialog box.

You can define up to 30 paper sizes. The paper size names you create will appear in the Paper Size menu in the Page Setup dialog box.

To delete a custom paper size, click **Customize** in the **Page Setup** dialog box, select it from the list in the **Custom Paper** dialog box, and click **Delete**.

Modifying the layout

You can modify the page layout of your document using the printer driver settings located in the **Layout** dialog box, shown below. To open this dialog box, click **Print** on the **File** menu of your application and click the **Layout** icon button in the **Print** dialog box. The **Layout** dialog box appears.



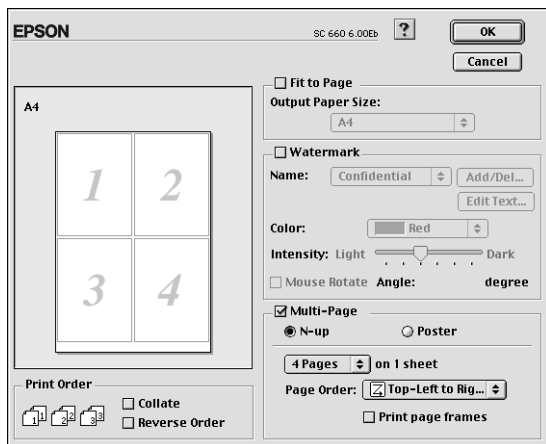
The **Layout** dialog box allows you to automatically match the document size to the paper size, print 2 or 4 pages on a single sheet, print poster-size images by enlarging one page to cover several sheets, or place watermarks on documents.

Fitting your document to the paper size

You can proportionally enlarge or reduce the size of the image to make it fit the paper size you select in the **Paper Size** list. To do this, select the **Fit to Page** check box, then specify the paper size you loaded in the printer in the **Paper Size** list.

Printing 2 or 4 pages on one sheet

To print 2 or 4 pages of your document on one sheet of paper, use the Multi-Page option in the Page Layout dialog box.

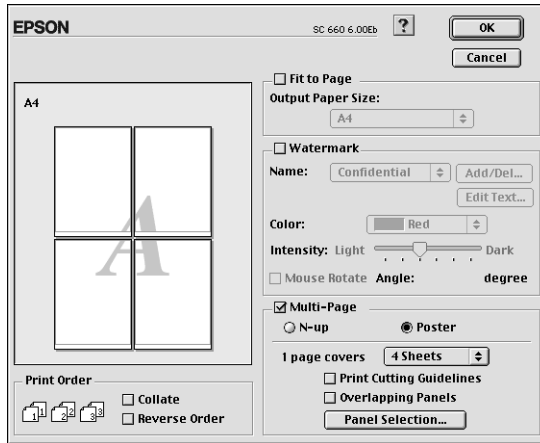


Select the Multi-Page check box and click N-up. Then make the following settings.

2 Pages 4 Pages	Prints 2 or 4 pages of your document on a single piece of paper.
Page Order	Allows you to specify the order in which the pages will be printed on the sheet of paper.
Print page frames	Allows you to print a frame around each page on the sheet of paper.

Printing posters

You can use the Poster setting in the Multi-Page option to print a poster-size image. A single document page can be enlarged to cover 4, 9, or 16 printed sheets of paper.



Select the Multi-Page check box and click Poster. Then make the following settings.

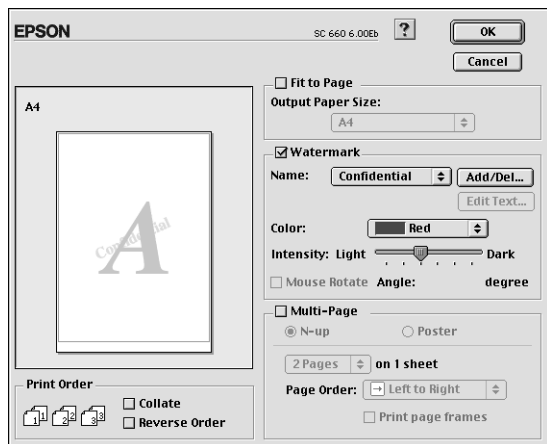
1 page covers xx sheets	Specifies how many printed sheets of paper the enlarged document page is to cover. You can select 4, 9, or 16 pages.
Print Cutting Guidelines	Prints border lines on the images to guide you when trimming the pages.
Overlapping Panels	Slightly overlaps the images so that they can be aligned more precisely.

If you only want to print a few of the panels without printing the entire poster, click Panel Selection, click the panels you don't wish to print, then click OK. Only the panels that you did not click will be printed.

Printing a watermark on your document

To print a watermark in the background of your printed documents or images, select the Watermark check box in the Page Layout dialog box.

Select the watermark you want to print from the Name list, then select its position, size, color, and intensity. You can change the position and size of the watermark by dragging it with your mouse in the preview window on the left.

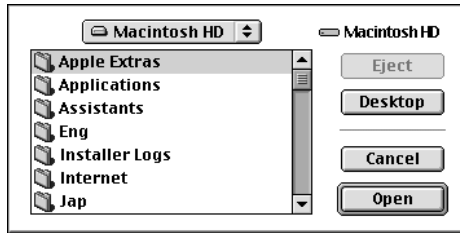


You can also add your own text-based or image-based watermarks to the Name list. Follow these steps.

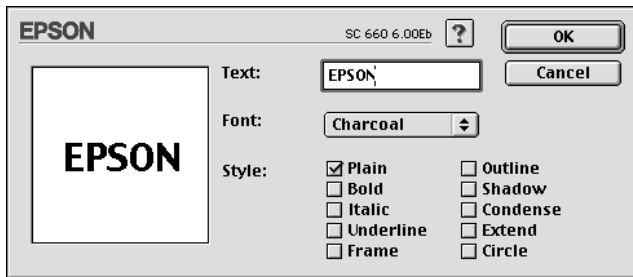
1. Click the Add/Del button beside the Name list. The following dialog box appears.



- To use an image file as a watermark, click the Add PICT button. Select the desired image file from your hard drive, then click Open.



To create a text-based watermark, click the Add Text button. Type the text in the Text box, select a font and a text style, then click OK.



- The image file name or the watermark text appears in the list in the Watermark dialog box. To change the name of the watermark, click it in the list, then type a new name.



4. Click OK to add your watermark to the Name list.

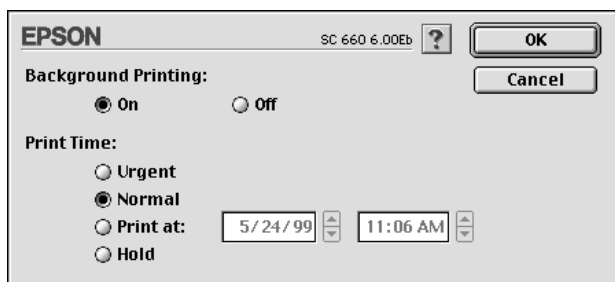
Note:

When a text watermark is selected in the Name list, you can edit the text and change the font and text style by clicking the Edit Text button.

Setting the print time

You can specify the time that you want the printer to start printing your document. Follow these steps.

1. Click the Background Printing icon button in the Print dialog box. The Background Printing dialog box appears.



2. Click On to turn on background printing, if necessary.
3. Select Urgent, Normal, Print at, or Hold as the Print Time option.

If you select Print at, use the arrows beside the date and time boxes to specify the date and time you want to print the document.

Note:

Make sure the computer and printer are turned on at the date and time you specified.

4. Click OK. The Background Printing dialog box closes.
5. In the Print dialog box, make sure your print settings are as you want them, then click Print.

Note:

You can check or change the priority of print jobs using the EPSON Monitor3 utility. See "Controlling Background Printing" for details.

Previewing your printout

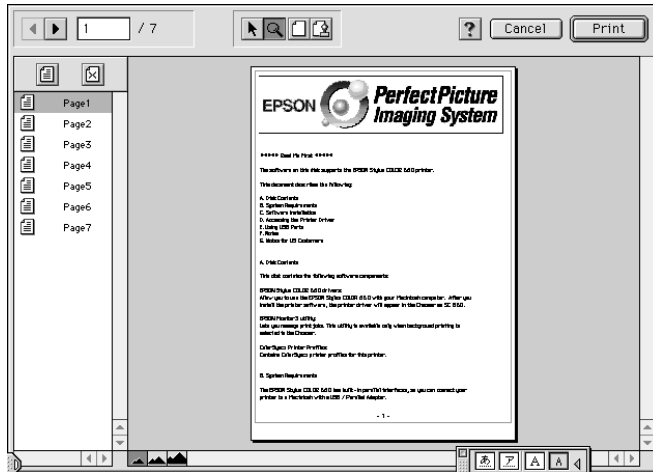
Clicking the Preview icon button in the Print dialog box allows you to see how your document will look before actually printing it. Follow these steps to use this feature.

1. Make your printer driver settings.
2. Click the Preview icon button in the Print dialog box. The Print button changes into a Preview button.

Note:

Use the Preview icon button to switch between the Print, Preview, and Save File modes. Click the icon to select the mode you want. For information on the Save File mode, see "Saving print data in files".

- Click the Preview button. The Preview dialog box appears and displays a preview of your document.



The Preview dialog box contains six icon buttons you can use to perform the following functions.

	Selection	Lets you select, move, and resize watermarks.
	Zoom	Enlarges or reduces the viewing size of the previewed page.
	Margin Display/ Non-Display	Shows or hides borderlines indicating the printable area.
	Watermark Editing	Shows or hides the Watermark Edit box. Use this box to apply watermarks to the document.
	Add Page Remove Page	Lets you select or deselect the pages you want to print from the left-side column.

4. If you are satisfied with the previewed image, click Print.

If you are not satisfied with the appearance of the image, click Cancel. The Preview and Print dialog boxes close with the current print settings preserved. Open the Print dialog box again to make more changes to the print settings.

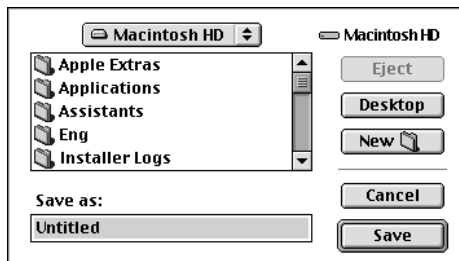
Saving print data in files

You can save print data in a file by using the Save File icon button in the Print dialog box. This feature lets you print the data at a later time simply by double-clicking the saved file. Follow these steps.

Note:

Use the Preview icon button to switch between the Print, Preview, and Save File modes. Click the icon to select the mode you want.

1. Make your printer driver settings.
2. Click the Preview icon button in the Print dialog box repeatedly until the Print button changes into the Save File button.
3. Click the Save File button. The following dialog box appears.

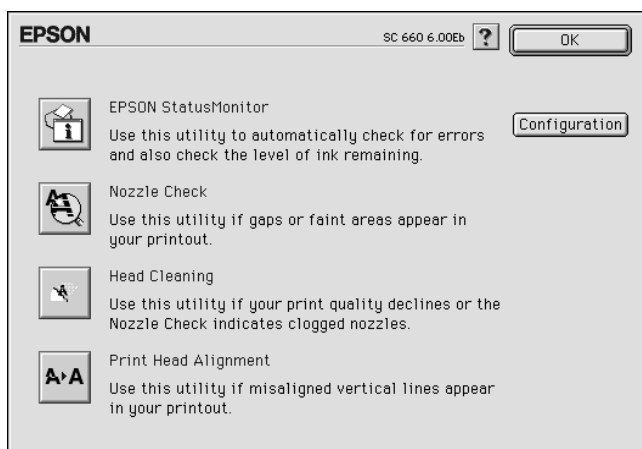


4. Select the location where you want to save the file, then type a file name into the Save As box and click Save.

When you want to print the data, double-click the file to open EPSON Monitor 3. Click the Resume button to send the data to the printer.

Using the Printer Utilities for Macintosh

EPSON printer utilities allow you to check the current printer status and do some printer maintenance from your screen. To access the utilities, click the Utility icon button in the Print or Page Setup dialog box, then click the button for the utility you want to use.



EPSON StatusMonitor

The StatusMonitor utility regularly monitors the printer status. If it detects a printer error, it will inform you with an error message.

You can also use this utility to check how much ink is remaining before printing.

To use the StatusMonitor, click the EPSON StatusMonitor button in the Utility dialog box. For details, see "Using the EPSON StatusMonitor".

Note:

Do not use the Nozzle Check, Head Cleaning, or Print Head Alignment utilities while printing is in progress; otherwise your printout may be marred.

Nozzle Check

Checks the print head nozzles for clogging. Check the nozzles if you notice print quality has declined and also after cleaning to confirm that the print head nozzles have been cleaned. In case the nozzle check indicates the print head needs cleaning, you can access the Head Cleaning utility directly from the Nozzle Check utility. For details, see “Checking the Print Head Nozzles”.

Head Cleaning

Cleans the print head. You may need to clean the head when you notice print quality has declined. Use the Nozzle Check utility first to confirm that the head needs to be cleaned. For details, see “Cleaning the Print Head”.

Print Head Alignment

This utility aligns the print head. Use this utility if you notice a misalignment of vertical or horizontal lines.

Configuration

Clicking this button displays the Configuration dialog box, where you can change the way the StatusMonitor utility notifies you when the printer status changes. For details, see “Making Configuration Settings”.

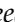

Replacing Ink Cartridges

Replacing an Empty Ink Cartridge





Using the printer's control panel

The printer's indicator lights will inform you when it is time to obtain a replacement ink cartridge and when it is time to replace an empty cartridge.

Note:

If you need to replace an ink cartridge when the  black and  color lights are off, see "Replacing an Old or Damaged Ink Cartridge".

This table describes the status of the lights on your printer and the actions you need to take.

Lights	Action
	Obtain a replacement black ink cartridge (S020187).
	Replace the empty black ink cartridge.
	Obtain a replacement color ink cartridge (S020191).
	Replace the empty color ink cartridge.

**Warning:**

Keep ink cartridges out of the reach of children. Do not allow children to drink from or otherwise handle the cartridges.

**Caution:**

- EPSON recommends the use of genuine EPSON ink cartridges. Other products not manufactured by EPSON may cause damage to your printer not covered by EPSON's warranties.*


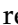

- Leave the old cartridge installed in the printer until you have obtained a replacement. Otherwise, ink remaining in the print head nozzles may dry out.*



Note:

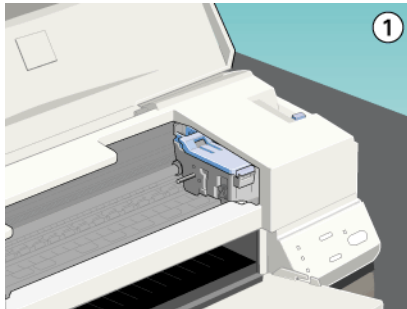
You cannot continue printing with one ink cartridge empty, even if the other cartridge still contains ink. Before printing, replace the empty cartridge.

--- HTML Page Break ---


To replace an ink cartridge using the printer's control panel, follow the steps below.

1. Make sure the printer is on. The  power light should be on, but not flashing. (Determine which cartridge needs to be replaced as indicated by the  black and  color ink out light.)
2. Lower the output tray at the front of the printer, then open the printer cover.




3. Hold down the  cleaning button for three seconds. The print head moves left to the ink cartridge replacement position, and the  power light begins flashing.



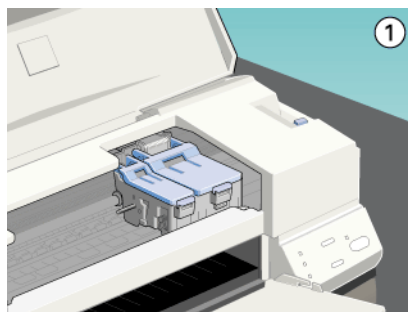
Caution:

Do not move the print head by hand as this may damage the printer. Always use the  cleaning button to move it.

Note:

If you press the  cleaning button for three seconds when the  black and  color ink out lights are off, the printer starts cleaning the print head.

4. Lift up the clamp that holds the cartridge you want to replace as far as it will go. The cartridge rises partly out of the cartridge holder. Then lift the cartridge out of the printer and dispose of it properly. Do not take the used cartridge apart or try to refill it.



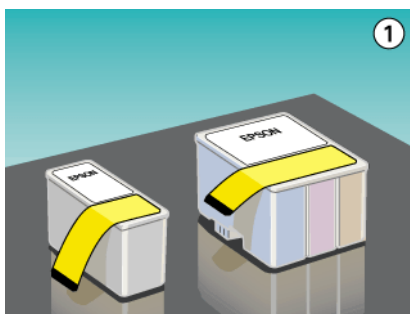
**Warning:**

If ink gets on your hands, wash them thoroughly with soap and water. If ink gets into your eyes, flush them immediately with water.

**Caution:**

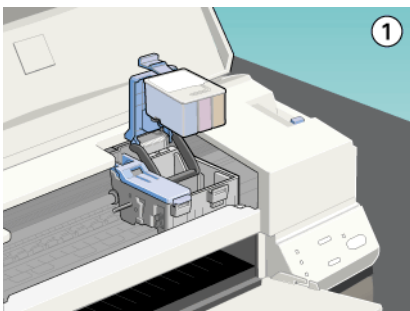
Once you open the ink cartridge clamp, the ink cartridge becomes unusable and cannot be reinstalled, even if ink remains.

5. Remove the new ink cartridge from its protective bag. Next, remove only the yellow tape seal from the cartridge.

**Caution:**



- You must remove the yellow tape seal from the cartridge before installing it. The cartridge will be permanently damaged if installed with the yellow tape attached.
- Do not remove the blue portion of the tape seal from the top of the cartridge; otherwise, the print head may become clogged and will be unable to print.
- Do not remove the tape seal from the bottom of the cartridge; otherwise, ink will leak.

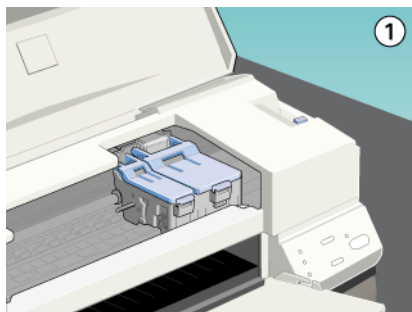
6. Place the ink cartridge gently into the cartridge holder with the label on the cartridge facing up. Then press the ink cartridge clamp down until it locks in place. Do not press down on the cartridge itself.



Caution:

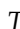
Once you install the ink cartridges, do not open their clamps again until you replace the cartridges. Otherwise, the cartridges may become unusable.

7. Press the  cleaning button. The printer moves the print head and begins charging the ink delivery system. This process takes about one minute to complete. When the ink charging process is finished, the printer returns the print head to its home position and the  power light stops flashing.





Caution:

The  power light continues to flash while the printer performs the ink charging operation. Never turn off the printer while this light is flashing. Doing so can result in incomplete charging of ink.

8. Close the printer cover.

--- HTML Page Break ---

Using the Status Monitor 3


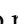
You can monitor the remaining ink levels from your computer and view on-screen instructions for replacing a low or empty ink cartridge.


When an ink cartridge is low or empty, click the **How To** button in the Status Monitor's Printer Status window; the print head moves to the ink cartridge replacement position. Follow the on-screen instructions to replace the cartridge.

For more information on installing and using the Status Monitor, see "Using EPSON Status Monitor 3".

Replacing an Old or Damaged Ink Cartridge




In some circumstances you may need to replace an ink cartridge before it is empty. For example, if the quality of your printouts remains poor even after repeatedly cleaning and aligning the print head, one or both of the ink cartridges may be old or damaged and should be replaced.

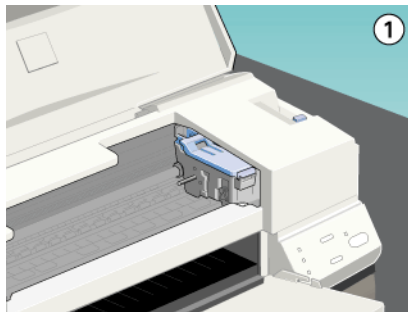
To replace an ink cartridge before the  black or  color ink out light flashes, follow these steps.

If the  black or  color ink out light is flashing or is on, replace the empty ink cartridge as described in “Replacing an Empty Ink Cartridge”.



Caution:

- Once you remove an ink cartridge, it becomes unusable and cannot be reinstalled even if ink remains.*
 - Leave the old cartridge installed in the printer until you are ready to replace it with a new one.*
1. Make sure the printer is on. The  power light should be on, but not flashing.
 2. Lower the output tray; then open the printer cover.
 3. Hold down the  load/eject button for three seconds; the print head moves to the replacement position. The  power light begins flashing.




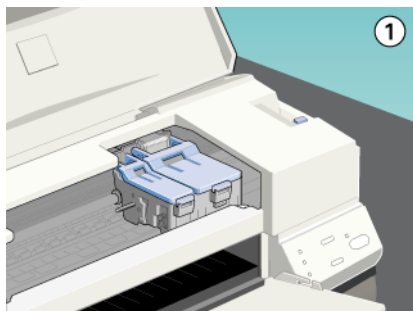
4. Lift the appropriate ink cartridge clamp. Then lift the ink cartridge out of the printer and dispose of it properly.
5. Remove the yellow tape seal from the new cartridge.
6. Place the cartridge gently into the cartridge holder. Do not press down on the cartridge. Then press the ink cartridge clamp down until it locks in place.




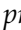
Caution:

Once you install the cartridges, do not open their clamps again until you replace the ink cartridges. Otherwise, the cartridges may become unusable.

7. Press the  load/eject button again. The printer moves the print head back to its home position and charges ink in the system.



Caution:

The  power light continues to flash while the printer performs the ink charging operation. Never turn off the printer while the  power light is flashing. Doing so can result in incomplete charging of ink.

Checking the Ink Supply

For Windows users

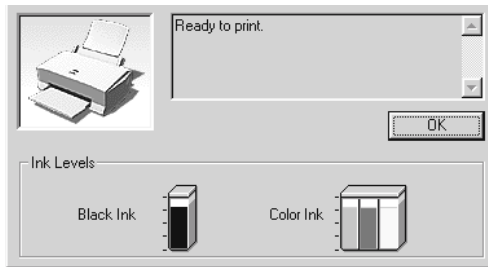
Follow the steps below to check the amount of ink left in the cartridges.

Status Monitor 3

Access EPSON Status Monitor 3 in one of the following ways.

- ❑ Double-click the printer-shaped shortcut icon on the taskbar at the bottom of your computer screen. To add a shortcut icon to the taskbar, see “Monitoring Preferences”.
- ❑ Open the printer software window, click the Utility tab, then click the EPSON Status Monitor 3 button.

A graphic displaying the amount of ink remaining appears.

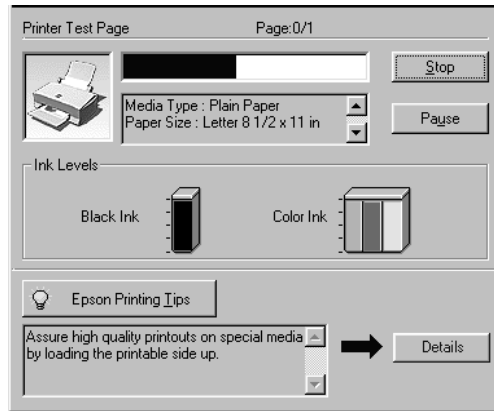


Note:

For the color ink cartridge, the color with the least amount of ink determines the level that is displayed for all the colors in the cartridge.

Progress Meter

You can check the amount of ink remaining from the EPSON Progress Meter dialog box while printing.



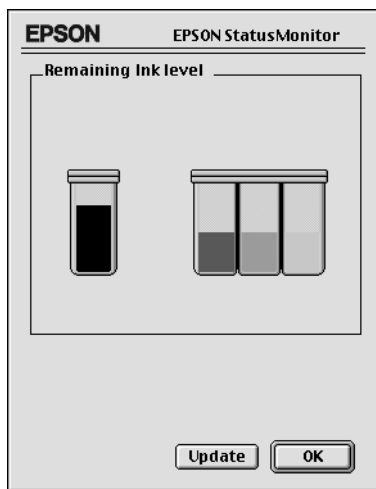
For Macintosh users

Follow the steps below to check the amount of ink left in the cartridges.

EPSON StatusMonitor

1. Click Print or Page Setup on the File menu of your application.
2. Click the Utility icon button in the dialog box.

3. Click the EPSON StatusMonitor button in the Utility dialog box. A graphic appears displaying the amount of ink remaining.



To update the ink-level information, click the Update button.

Note:

For the color ink cartridge, the color with the least amount of ink determines the level that is displayed for all the colors in the cartridge.

Maintenance

Checking the Print Head Nozzles

If you find that the printed image is unexpectedly faint or dots in the printed image are missing, you may be able to identify the problem by checking the print head nozzles.

You can check the print head nozzles from your computer with the Nozzle Check utility in the printer software, or from the printer itself by using the printer's control panel buttons.

Using the Nozzle Check utility

Note:

Do not use the Nozzle Check utility while printing is in progress; otherwise your printout may be marred.

For Windows users



1. Make sure A4 or Letter size paper is loaded in the sheet feeder.
2. Access the printer software window. If you need instructions, see "Accessing the printer software".
3. Click the Utility tab, then click the Nozzle Check button.
4. Follow the instructions on your screen.

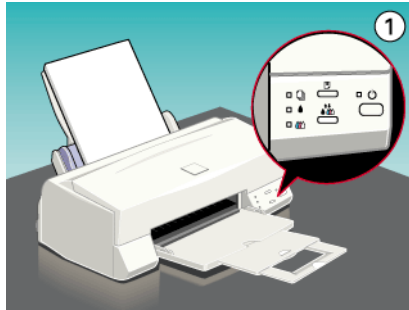
For Macintosh users

1. Make sure A4 or Letter size paper is loaded in the sheet feeder.
2. Access the Print or Page Setup dialog box.
3. Click the Utility icon button, then click the Nozzle Check button.

4. Follow the messages on your screen.

Using the control panel buttons

1. Make sure that A4 or Letter size paper is loaded in the sheet feeder.
2. Hold down the  load/eject button and press the  power button to turn on the printer. Then release both buttons.

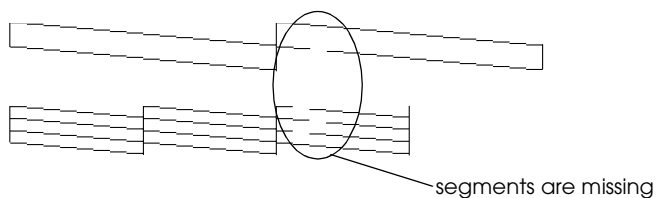


The printer prints an operation check page including your printer's ROM version information, the ink counter code, and a nozzle check pattern. Here are sample printouts.

Good sample



Print head needs to be cleaned





If the nozzle check page does not print satisfactorily (for example, if any segment of the printed lines is missing) there is a problem with the printer. This could be a clogged ink nozzle or a misaligned print head. See "Cleaning the Print Head" for details on cleaning the print head. For information on aligning the print head, see "Aligning the Print Head".

Cleaning the Print Head

If you find that the printed image is unexpectedly faint or dots in the printed image are missing, you may be able to solve these problems by cleaning the print head, which ensures that the nozzles are delivering ink properly.



You can clean the print head from your computer with the Head Cleaning utility in the printer software, or from the printer itself by using the printer's control panel buttons.

Note:



- ❑ *Print head cleaning uses both color and black ink. To avoid wasting ink, clean the print head only if print quality declines; for example, if the printout is blurry or the color is incorrect or missing.*
- ❑ *Use the Nozzle Check utility to confirm that the print head needs to be cleaned. This saves ink.*
- ❑ *When the  black or  color ink out light is flashing or on, you cannot clean the print head. Replace the appropriate ink cartridge first.*
- ❑ *Do not start the Head Cleaning or Nozzle Check utility while printing is in progress; otherwise your printout may be marred.*

Using the Head Cleaning utility


For Windows users

1. Make sure that both  black and  color ink out lights are off.

Note:

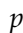
If the  black or  color ink out light is flashing, you can not clean the print head. Replace the appropriate ink cartridge first.


2. Access the printer software window. If you need instructions, see “Accessing the printer software”.
3. Click the Utility tab, then click the Head Cleaning button.
4. Follow the messages on your screen.

The  power light flashes while the printer performs the cleaning cycle. It takes about one minute to complete.



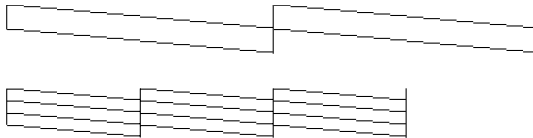
Caution:

Never turn off the printer while the  power light is flashing. Doing so may damage the printer.

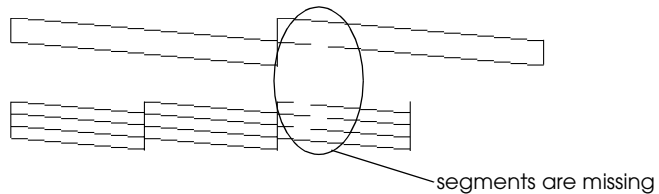
- When the  power light stops flashing, click Print nozzle check pattern in the Head Cleaning dialog box to confirm that the head is clean and to reset the cleaning cycle.

Nozzle check patterns:

Good sample



Print head needs to be cleaned



In the check pattern, if you find that any segments are missing from the test lines, you may need to repeat the head cleaning and print the nozzle check pattern again.

If print quality hasn't improved after repeating this procedure four or five times, turn the printer off and leave it alone overnight. Then do the head cleaning again.



If the print quality still has not improved, one or both of your ink cartridges may be old or damaged and may need to be replaced. To replace an ink cartridge before it is empty, see "Replacing an Old or Damaged Ink Cartridge".

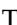
If print quality remains a problem after replacing the ink cartridges, contact your dealer.

Note:

To maintain print quality, we recommend turning on the printer for at least one minute every month.


For Macintosh users


1. Make sure that the printer is on, and the  black and  color ink out lights are off.
2. Click the Utility icon button in the Print or Page Setup dialog box, then click the Head Cleaning button.
3. Follow the on-screen messages.

The  power light flashes while the printer performs the cleaning cycle. This operation takes about one minute to complete.



Caution:

Never turn off the printer while  power light is flashing. Doing so may damage the printer.

4. When the  power light stops flashing, click the Confirmation button in the Head Cleaning dialog box to print a nozzle check pattern and to reset the cleaning cycle. Use the check pattern to confirm the head is clean.

If print quality hasn't improved after repeating this procedure four or five times, turn the printer off and leave it alone overnight. Then do the head cleaning again.




If the print quality still has not improved, one or both of your ink cartridges may be old or damaged and may need to be replaced. To replace an ink cartridge before it is empty, see "Replacing an Old or Damaged Ink Cartridge".

If print quality remains a problem after replacing the ink cartridges, contact your dealer.



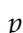
Note:


To maintain print quality, we recommend turning on the printer for at least one minute every month.

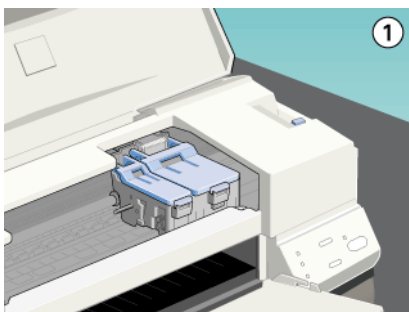
Using the control panel buttons


1. Make sure that the  power light is on and that both the  black and  color ink out lights are off.

Note:

If the  black or  color ink out light is flashing or on, you cannot clean the head, and this operation will start the ink cartridge replacement procedure. If you do not want to replace an ink cartridge at this moment, press the  cleaning button to return the print head to its home position.


2. Hold down the  cleaning button for three seconds.

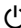


The printer starts cleaning the print head and the  power light begins flashing. Print head cleaning takes about one minute to complete.



Caution:

Never turn off the printer while the  power light is flashing. Doing so may damage the printer.

3. When the  power light stops flashing, print a few lines from a document to confirm that the head is clean and to reset the cleaning cycle.

If print quality hasn't improved after repeating this procedure four or five times, turn the printer off and leave it alone overnight. Then do the head cleaning again.

If the print quality still has not improved, one or both of your ink cartridges may be old or damaged and may need to be replaced. To replace an ink cartridge before it is empty, see "Replacing an Old or Damaged Ink Cartridge".

If print quality remains a problem after replacing the ink cartridges, contact your dealer.

Note:

To maintain print quality, we recommend turning on the printer for at least one minute every month.

Aligning the Print Head

If you notice a misalignment of vertical lines, you may be able to solve this problem from your computer using the Print Head Alignment utility in your printer software.

Note:

Do not start the Print Head Alignment utility while printing is in progress; otherwise, your printout may be marred.

For Windows users

1. Make sure A4 or Letter size plain paper is loaded in the sheet feeder.
2. Access the printer software window. If you need instructions, see "Accessing the printer software".

3. Click the Utility tab, then click the Print Head Alignment button.
4. Follow the messages on your screen to align the print head.

For Macintosh users

1. Make sure A4 or Letter size plain paper is loaded in the sheet feeder.
2. Click the Utility icon button in the Printer Page Setup dialog box, then click the Print Head Alignment button.
3. Follow the messages on your screen to align the print head.

Cleaning the Printer

To keep your printer operating at its best, clean it thoroughly several times a year.

1. Make sure the printer is turned off and all the printer's lights are off. Then unplug the power cord.
2. Remove any paper from the sheet feeder.
3. Use a soft brush to carefully clean away all dust and dirt.
4. If the outer case or the inside of the sheet feeder is dirty, clean it with a soft, clean cloth dampened with mild detergent. Keep the printer cover closed to prevent water getting inside.
5. If the inside of the printer accidentally gets soiled with ink, wipe it off with a damp cloth.



Warning:

Be careful not to touch the gears inside the printer.



Caution:

- ❑ *Never use alcohols or thinners to clean the printer; these chemicals can damage the components as well as the case.*
- ❑ *Be careful not to get water on the printer mechanism or electronic components.*
- ❑ *Do not use a hard or abrasive brush.*
- ❑ *Do not spray the inside of the printer with lubricants; unsuitable oils can damage the mechanism. Contact your dealer or a qualified service person if lubrication is needed.*

Transporting the Printer

If you need to transport your printer, carefully repack it using the original box and packing materials as follows:

1. Open the printer cover and make sure that the print head is in the home (far right) position. If not, turn on the printer and wait until the print head returns to the home position. Turn off the printer and then close the printer cover.

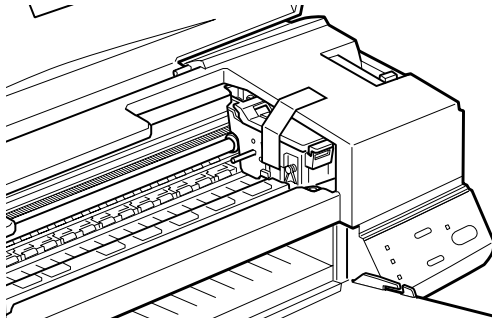


Caution:

Leave the ink cartridges installed when you transport the printer. Removing the cartridges during transport can damage the printer.

2. Unplug the power cord from the electrical outlet, then disconnect the interface cable from the printer.
3. Remove the paper from the sheet feeder and remove the paper support.
4. Push in the output extension tray, and then raise the output tray.

5. Open the printer cover again. Secure the ink cartridge holder to the printer with tape as shown below, then close the printer cover.



6. Attach the protective materials to both sides of the printer.
7. Repack the printer and power cord in the original box.
8. Keep the printer level during transport.

Updating Software

Updating to Windows 98

If you upgraded from Windows 95 to Windows 98, uninstall the printer software using the Add/Remove Programs icon in the Windows Control Panel, then install the printer software again.

Updating the Windows NT 4.0 driver

When you update the printer driver for Windows NT 4.0, please be sure to uninstall the previous printer driver before you install the new driver. Installing over the existing printer driver results in a failure to update.






Problem Solver






Diagnosing the Problem


Troubleshooting printer problems is best handled in two easy steps: first diagnose the problem, then apply likely solutions until the problem is fixed. The information that you need to diagnose the most common problems is provided by the printer's control panel lights and by the Status Monitor utility (for Windows 95, 98, NT 4.0 and Macintosh).

Error indicators

You can identify many common printer problems with the lights on your printer's control panel. If your printer stops working and the lights are on or flashing, use the following table of panel light patterns to diagnose the problem, then follow the recommended corrective measures.

Lights	Problem and Solution	
	Paper Out	
	No paper is loaded in the printer.	Load paper in the sheet feeder; then press the  load/eject button to turn this light off. The printer resumes printing.
	Paper Jam	
	Paper has jammed in the printer.	Press the  load/eject button. The printer ejects the jammed paper and then resumes printing. If the error is not cleared, open the printer cover and remove the jammed paper. Then reload paper in the sheet feeder and press the  load/eject button. The printer resumes printing.

	Ink Low (black ink cartridge)	
	The black ink cartridge is nearly empty.	Obtain a replacement black ink cartridge (S020187).
	Ink Out (black ink cartridge)	
	The black ink cartridge is empty.	Replace the black ink cartridge with a new one (S020187). See "Replacing an Empty Ink Cartridge" for details.
	Ink Low (color ink cartridge)	
	The color ink cartridge is nearly empty.	Obtain a replacement color ink cartridge (S020191).
	Ink Out (color ink cartridge)	
	The color ink cartridge is empty.	Replace the color ink cartridge with a new one (S020191). See "Replacing an Empty Ink Cartridge" for details.
	Carriage Error	
	The print head carriage is obstructed by jammed paper or other foreign material and cannot return to the home position.	Turn off the printer. Open the printer cover and remove any paper from the paper path by hand. Then turn the printer back on. If the error is not cleared, contact your dealer.

	Unknown Printer Error	
	An unknown printer error has occurred.	Turn off the printer, and contact your dealer.

Status Monitor 3

The Status Monitor 3 utility's Printer Status window provides status messages and a graphic display showing the current state of the printer.

If a problem occurs while printing, an error message appears in the Progress Meter window.

When ink is out, click the HOW TO button in the Printer Status window and the Status Monitor will lead you step-by-step through the cartridge replacement procedure.

--- HTML Page Break ---

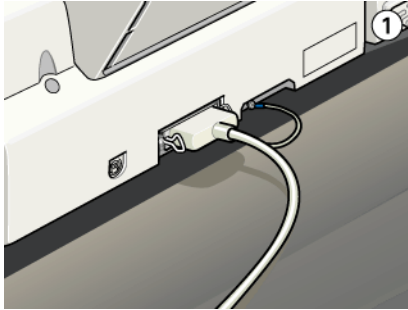
Running a printer operation check



Performing a printer operation check can help you determine whether the problem comes from the printer or the computer.

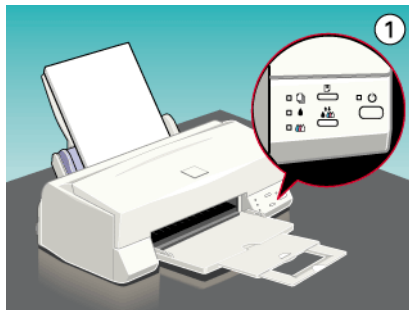
To print a printer operation check page, follow these steps.

1. Make sure both the printer and computer are turned off.
2. Disconnect the cable from the printer's interface connector.

If you use the parallel interface, unlock the wire clips on both sides of the interface connector and remove the ground connector, if necessary. Then disconnect the cable from the printer's interface connector.

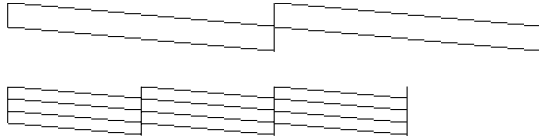


3. Make sure that A4 or Letter size paper is loaded in the sheet feeder.
4. Hold down the  load/eject button and press the  power button to turn on the printer. Then release both buttons.

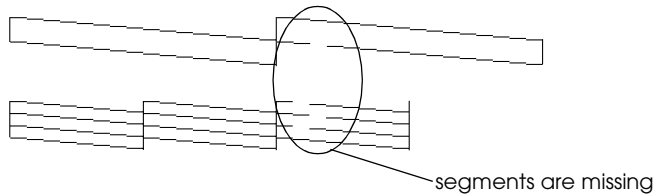


The printer prints an operation check page including the version of your printer's ROM, the ink counter code, and a nozzle check pattern.

- ❑ Compare the quality of the printed check page with the sample shown below. If there are no print quality problems, such as gaps or missing segments in the test lines, the printer itself is all right and the problem probably lies in the printer software settings, application settings, the interface cable (be sure to use a shielded cable), or the computer itself.



- ❑ If the check page does not print satisfactorily as shown below, there is a problem with the printer. For example, if any segment of the printed lines is missing, this could be a clogged ink nozzle or a misaligned print head.

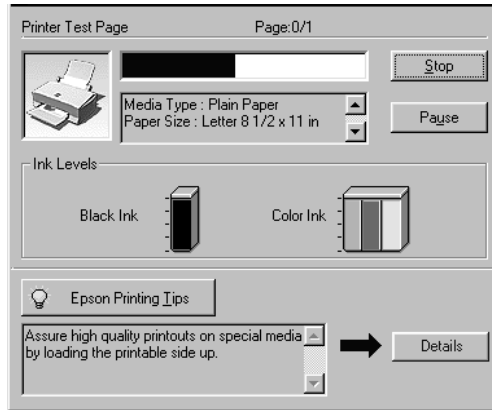


Cancelling Printing

If the printouts are not what you expected and display incorrect or garbled characters or images, you may need to cancel printing. To cancel printing, follow the steps below.

For Windows

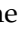
When you send a print job to the printer, the Progress Meter appears on your computer screen.



Click the Stop button to cancel printing.

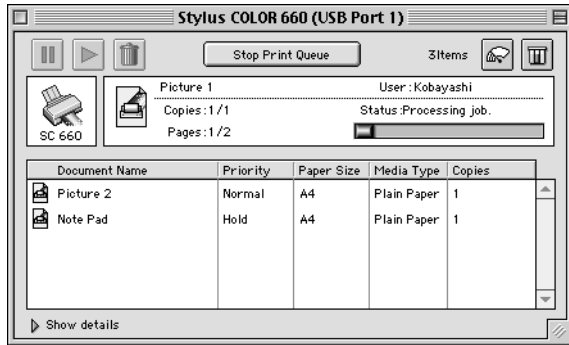
For Macintosh

When background printing is on

1. Press the  power button to turn off the printer.
2. Select EPSON Monitor3 from the application menu.



- Click on the document which is printing, then click the Stop icon button to cancel the print job.








When background printing is off

- Press the \odot power button to turn off the printer.
- Hold down the command key on your keyboard and press the period (.) key to cancel the print job.

Print Quality Could Be Better



If you are having print quality problems, first perform a “<As_test.htm>Test Printing”. Then, compare your test printing with the illustrations below. Click the caption under the illustration that best resembles your printout.

<p>enthalten alle i Aufdruck. W J 5008 "Regel:</p> <p>“Horizontal banding”</p>	<p>enthalten alle i Aufdruck. W J 5008 "Regel:</p> <p>“Vertical misalignment or banding”</p>
--	--

 <p>"Horizontal banding"</p>	 <p>"Vertical misalignment or banding"</p>
 <p>"Color gaps"</p>	 <p>"Incorrect or missing colors"</p>
 <p>"Blurry or smeared printout"</p>	

Horizontal banding

Try one or more of these solutions.

- Make sure the printable side of the paper is face up in the sheet feeder.
- Run the Head Cleaning utility to clear any clogged ink nozzles. Windows 95 or 98 users can start the "<As_head.htm>Head Cleaning Utility" now.
- Select the Automatic mode in your printer driver's Main menu (Windows) or Print dialog box (Macintosh).
- Check the  black and  color ink out lights. If a light is flashing, replace the ink cartridge. See "Replacing an Empty Ink Cartridge".

- ❑ Make sure the Maximum Printable Area setting in your printer driver is deselected. When this setting selected, banding may occur in the expanded area.



Vertical misalignment or banding

Try one or more of these solutions.

- ❑ Make sure the printable side of the paper is face up in the sheet feeder.
- ❑ Run the Print Head Alignment utility. Windows 95 or 98 users can start the "<As_alig.htm>Print Head Alignment Utility" now.
- ❑ Turn off the High Speed setting in your printer driver. For instructions, see "Using the Advanced settings" for Windows. For Macintosh, see "Using the Advanced settings".
- ❑ Run the Head Cleaning utility to clear any clogged ink nozzles. Windows 95 or 98 users can start the "<As_head.htm>Head Cleaning Utility" now.

Color gaps

Try one or more of these solutions.

- ❑ Make sure your paper is not damaged, dirty, or too old. Also, make sure the printable side of the paper is face up in the sheet feeder.
- ❑ Run the Head Cleaning utility to clear any clogged ink nozzles. Windows 95 or 98 users can start the "<As_head.htm>Head Cleaning Utility" now.
- ❑ Check the  black and  color ink out lights. If one of the lights is flashing, replace the appropriate ink cartridge. See "Replacing an Empty Ink Cartridge".

- ❑ Adjust the color settings in your application software or your printer driver. For instructions, see “Using the Advanced settings” for Windows or “Using the Advanced settings” for Macintosh.
- ❑ Select the Automatic mode in your printer driver’s Main menu (Windows) or Print dialog box (Macintosh).

Incorrect or missing colors

Try one or more of these solutions.

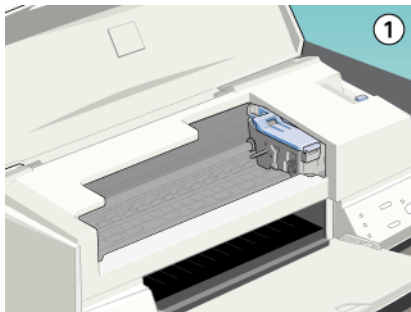
- ❑ Change the ink setting in your printer driver to Color. For instructions, see “Using the Automatic mode” for Windows or “Using the Automatic settings” for Macintosh.
- ❑ Adjust the color settings in your application software or your printer driver. For instructions, see “Using the Advanced settings” for Windows or “Using the Advanced settings” for Macintosh.
- ❑ Run the Head Cleaning utility. Windows 95 or 98 users can start the “<As_head.htm>Head Cleaning Utility” now. If colors are still incorrect or missing, replace the color ink cartridge. If the problem persists, replace the black ink cartridge. See “Replacing an Old or Damaged Ink Cartridge”.

Blurry or smeared printout

Try one or more of these solutions.

- ❑ Make sure your paper is dry and the printable side is facing up. Also, make sure you’re using a correct paper type. See “Paper” for specifications.
- ❑ Select the Automatic mode in your printer driver’s Main menu (Windows) or Print dialog box (Macintosh).
- ❑ Set the adjust lever to the “+” position, and make sure the Media Type setting is set correctly in your printer driver.

- ❑ If the paper is curled toward the printable side, flatten it or curl it slightly toward the opposite side.
- ❑ Remove each sheet from the output tray as it's printed, especially if you're using transparencies.
- ❑ If you're printing on glossy media or transparencies, place a support sheet (or a sheet of plain paper) beneath the stack. Or load one sheet at a time.
- ❑ Run the Head Cleaning utility. Windows 95 or 98 users can start the "<As_head.htm>Head Cleaning Utility" now.
- ❑ Run the Print Head Alignment utility. Windows 95 or 98 users can start the "<As_alig.htm>Print Head Alignment Utility" now.
- ❑ Ink may have leaked inside the printer; wipe the inside of the printer with a soft, clean cloth.



Printouts Are Not What You Expected

If one of the following problems has occurred, try the solutions listed for the problem.

Incorrect or garbled characters

Try one or more of these solutions.

- Select your printer as the default printer in Windows.
- Clear any stalled print jobs from the Spool Manager. For instructions, see “Using EPSON Spool Manager”.
- Turn off the printer and computer. Make sure the printer’s interface cable is securely plugged in.
- If you are using Windows NT 4.0, try to uninstall the EPSON Printer Port. Click Start, point to Programs, then point to EPSON Printers and click EPSON Printer Port Uninstall. Follow the instructions on the screen.

Incorrect margins

Try one or more of these solutions.

- Check the margin settings in your application software.
- Make sure the margins are within the printable area of the page. See “Paper” for specifications.
- For Windows, check the settings in the Paper menu. Make sure the settings are correct for the paper size you’re using.

For Macintosh, check the settings in the Page Setup dialog box. Make sure the settings are correct for the paper size you’re using.

Inverted image

Turn off the Flip Horizontal setting in the printer driver, or the “Mirror” setting in your application software. For instructions, see online help for the printer driver or for your application.

For Macintosh, see also “Using the Advanced settings”.

Blank pages print

Try one or more of these solutions.

- ❑ Select your printer as the default printer in Windows.
- ❑ For Windows, check the settings in the Paper dialog box. Make sure they’re correct for the paper size you’re using.

For Macintosh, check the settings in the Page Setup dialog box. Make sure they’re correct for the paper size you’re using.

- ❑ Run the Head Cleaning utility to clear any clogged nozzles. Windows 95 or 98 users can start the “<As_head.htm>Head Cleaning Utility” now.

After trying one or more of these solutions, run a printer operation check to check your results. See “Running a printer operation check”.

Printout has smears on the bottom edge

Try one or more of these solutions.

- ❑ If the paper is curled toward the printable side, flatten it or curl it slightly toward the opposite side.
- ❑ Set the adjust lever to the “+” position, and turn off the High Speed setting in your printer driver’s Advanced dialog box. The Advanced dialog box is accessible through the Main menu (for windows) or Print dialog box (for Macintosh) when Custom mode is selected. To turn this option off, you may also need to change the Print Quality setting.

Printing is too slow

Try one or more of these solutions.

- Make sure the Media Type setting is set correctly in your printer driver. For instructions, see “Making the Media Type setting” for Windows or “Making the Media Type setting” for Macintosh.
- Select the Automatic mode in your printer driver’s Main menu (Windows) or Print dialog box (Macintosh) and then set the slide bar to the Speed setting. For instructions, see “Using the Automatic mode” for Windows or “Using the Automatic settings” for Macintosh.
- Don’t run too many applications at the same time. Close any applications you are not using at the moment.
- Delete unnecessary files to make room on your hard disk drive.

Note:


Your computer may not have enough memory. For further tips, See “Increasing the Print Speed”.

- If you upgraded from Windows 95 to Windows 98, uninstall the printer software using Add/Remove Programs from the Control Panel in Windows, then install the software again.

Printer Doesn't Print

If one of the following problems has occurred, try the solutions listed.

All lights are off

- Press the  power button and make sure the printer is on.

- ❑ Turn off the printer and make sure the power cord is securely plugged in.
- ❑ Make sure your outlet works and is not controlled by a wall switch or timer.

Lights came on and then went out

The printer's voltage may not match the outlet rating. Turn off the printer and unplug it immediately. Then, check the printer labels.

If the voltage doesn't match, **DO NOT PLUG YOUR PRINTER BACK IN.** Contact your dealer.

Only the power light is on

- ❑ Turn off the printer and computer. Make sure the printer's interface cable is securely plugged in.
- ❑ Make sure there is no packing material in the printer.
- ❑ Turn off the printer and computer and disconnect the printer's interface cable. Then print an operation check page. See "Running a printer operation check".
- ❑ If the check page prints, make sure the printer software and your application software are installed correctly.

Note:

If you're trying to print a large image, your computer may not have enough memory to print.





- ❑ If you are using Windows NT 4.0, try to uninstall the EPSON Printer Port. Click Start, point to Programs and EPSON Printers, then click EPSON Printer Port Uninstall. Follow the messages on the screen.

- ❑ Clear any stalled print jobs from the Spool Manager. For instructions, see “Using EPSON Spool Manager”.
- ❑ If the printer sounds like it’s trying to print, but can’t, run the Head Cleaning utility. Windows 95 or 98 users can start the “<As_head.htm>Head Cleaning Utility” now.
- ❑ If the above does not work, replace the ink cartridges. See “Replacing an Old or Damaged Ink Cartridge” for instructions.

Paper out light is flashing or on

- ❑ If the paper out light is flashing, remove any paper that may be jammed in the printer.
- ❑ If the paper out light is on, load more paper in the sheet feeder.

One of the ink out lights is flashing or on

- ❑ If the  black or  color ink out light is flashing, ink is low. Prepare a replacement cartridge.
- ❑ If the  black or  color light is on, ink is out. Replace the corresponding cartridge. See “Replacing an Empty Ink Cartridge”.

Ink out lights are on and the other lights are flashing

Follow these steps.

1. Remove any paper in the printer.
2. Turn the printer off. Check for and remove any foreign objects or pieces of paper from inside the printer. Also, make sure that there is sufficient space around the vent on the back of the printer to allow proper ventilation. Remove any objects blocking the vent. Then, turn the printer back on.

3. If the error is not cleared, contact your dealer.

Paper Doesn't Feed Correctly

If one of the following problems has occurred, try the solutions listed for the problem.

Paper doesn't feed

Remove the stack of paper and check that:

- The paper isn't curled or creased.
- The paper isn't too old. See the instructions that came with the paper for more information.
- Paper isn't loaded above the arrow on the left edge guide.
- The paper isn't jammed inside. If it is, remove the jammed paper.

Then, load the paper again. Make sure you follow any special loading instructions that came with your paper. See also the paper handling section in this guide.


Multiple pages feed

Remove the stack of paper and:

- Make sure the paper is not too thin. See "Paper" for specifications.
- Fan the edges of the stack to separate the sheets, then reload the paper.

If too many copies of a document are printing, check the Copies settings in both the printer driver and your application. For instructions, see “Modifying the printout style” for Windows or “Modifying the layout” for Macintosh.

The paper jams


Press the  load/eject button to eject the jammed paper. If the error message does not clear, open the cover and remove all the paper inside, including any torn pieces. Then load the paper again.

If your paper jams frequently, make sure you:

- Use smooth, high-quality paper, loaded with the printable side up.
- Fan the stack before loading it.
- Don't load paper above the arrow mark on the left edge guide.
- Adjust the left edge guide to fit your paper.

Paper isn't ejected fully or is wrinkled

Try one or more of these solutions.

- If the paper doesn't eject fully, press the  load/eject button. Also check the paper size setting in your application or printer driver.
- If the paper is wrinkled when it comes out, it may be damp or too thin. Load a new stack.

Note:

Store any unused paper in its original packaging in a dry area. See “Paper” for specifications.

Where to Get Help

If your printer is not operating properly and you cannot solve the problem using the troubleshooting information in your printer documentation, contact customer support services for assistance.

Customer support will be able to help you much more quickly if you give them the following information.

- Serial number of your printer
(The serial number label is on the back of the printer.)
- Printer model
- Brand and model of your computer
- Printer software version
(Click About in your printer driver.)
- Windows version you are using
- Software application(s) you normally use with your printer and their version number(s)

Select your country:

- “For United Kingdom and the Republic of Ireland Users”
- “For Australian Users”
- “For Singapore Users”
- “For Hong Kong Users”
- “For Philippines Users”

For United Kingdom and the Republic of Ireland Users

If you purchased your printer in the UK or the Republic of Ireland, EPSON (UK) Limited provides a range of customer services and technical support.

World Wide Web

If you can connect to the Internet and have a Web browser, you can access our Web site at <http://www.epson.co.uk>. Here you will find information on the latest EPSON products, software drivers, on-line user guides, and answers to frequently asked questions.

Faxon EPSON

Contact Faxon EPSON Faxback Service for support information including troubleshooting tips, switch settings, and driver information.

To use Faxon EPSON, call 01442 227332 in the UK or 0044 1442 227332 from the Republic of Ireland using a touch-tone phone. You will be asked to follow a simple routine to register your document request. Once you have entered your telephone and fax numbers, Faxon EPSON will fax a copy of the document catalogue to your fax machine.

When you have found the documents that you need in the catalogue, call Faxon EPSON again and enter the document ID numbers. The documents will be faxed to you automatically.

Bulletin Board Service for latest drivers and utilities

You can call the EPSON Bulletin Board Service on 01442 227479 in the UK or 0044 1442 227479 from the Republic of Ireland. No membership is required. Make sure that your communications software is set to 8 data bits, 1 stop bit, no parity bit, ANSI terminal mode emulation, and a modem speed of up to 28.8 Kbps. Downloading protocols supported include Xmodem, Ymodem and Zmodem. See the documentation that came with your communications software and modem for more information.

When you first connect to the Bulletin Board Service, you will be asked for your name, company name, phone number and a password (which you can invent yourself).

Customer and Warranty Support

Our Customer and Warranty Support teams can be contacted by calling 0870 163 7766 in the UK or 0044 0870 163 7766 from the Republic of Ireland. They can provide the following services:

- ❑ Technical information on installing, configuring, and operating your EPSON products
- ❑ Arranging for faulty EPSON products to be repaired within the warranty period

A full list of EPSON Customer and Warranty Support services is available on the technical support section of our World Wide Web pages at <http://www.epson.co.uk/support/> and on Faxon EPSON Faxback service in document number 5085.

Pre Sales Enquiry Desk

The Enquiry Desk team can be contacted by calling 0800 220546 in the UK or 1 800 409132 from the Republic of Ireland, by faxing 01442 227271 in the UK or 0044 1442 227271 from the Republic of Ireland, and via Email at info@epson.co.uk. They can provide the following information:

- ❑ Pre Sales information and literature on new EPSON products (also available via our world wide web site at <http://www.epson.co.uk>)
- ❑ Where to purchase genuine EPSON consumables, accessories, and options

For Australian Users

EPSON Australia wishes to provide you with a high level of Customer Service. As well as the user's guide, we provide the following sources for obtaining information:

EPSON FAXBACK

EPSON FAXBACK will fax you the latest specifications and pricing for most EPSON products offered in Australia. There is also technical information including details of the latest software and drivers available. Phone (02) 9903 9075 and the system will guide you through a number of choices before faxing the information to your fax machine.

EPSON Bulletin Board System

This is where you can download the latest software and drivers. Visit the BBS to check out the latest versions. If you have a modem, phone (02) 9417 5090.

Internet URL <http://www.epson.com.au>

Access the EPSON Australia World Wide Web pages. Worth taking your modem here for the occasional surf! You can get the same information as offered on the EPSON FAXBACK and the EPSON Bulletin Board plus more.

Your dealer

Don't forget that your dealer can often help identify and resolve problems. The dealer should always be the first call for advice on problems. They can often solve problems quickly and easily as well as give you advice on the next step to take.

EPSON Helpdesk

EPSON Helpdesk is provided as a final backup to make sure our clients have access to advice. Operators on the Helpdesk can aid you in diagnosing hardware and software problems. They can also advise you on the latest EPSON products and where the nearest dealer or service agent is located. Many types of queries are answered here.

The Helpdesk numbers are:

Phone (02) 9903 9040

Fax (02) 9903 9189

We encourage you to have all the relevant information on hand when you ring. The more information you prepare, the faster we can help solve the problem. This information includes the *User's Guide* for your EPSON product, type of computer, operating system, application programs, and any other information you feel is required.

For Singapore Users

Contact the telephone and fax numbers below:

Phone (065) 337-7911

Fax (065) 334-1185

For Hong Kong Users

To obtain technical support as well as other after-sales services, users are welcome to contact EPSON Hong Kong Limited.

Internet home page

EPSON Hong Kong has established a local home page in both Chinese and English on the Internet to provide users with the following information:

- Product information
- Answers to Frequently Asked Questions (FAQs)
- Latest versions of EPSON printer drivers

Users can access our World Wide Web home page at:
<http://www.epson.com.hk>

Electronic bulletin board system

An electronic bulletin board system (BBS) is also available to obtain printer information and the latest versions of printer drivers. You can log on to the following number for the BBS service:

BBS (852) 2827-4244

Technical Support Hotline

You can also contact our technical staff at the following telephone and fax numbers:

Phone (852) 2585-4399

Fax (852) 2827-4383

For Philippines Users

To obtain technical support as well as other after sales services, users are welcome to contact the EPSON Philippines Representative Office at the telephone and fax numbers below:

Phone (632) 813-6552

Fax (632) 813-6545

BBS (632) 814-0595

Options and Consumable Products

Options

The following interface cables and interface cards are available for your printer.

Interface cables

EPSON supplies the following interface cable. However, you can use any interface cable that meets these specifications. See your computer manual for any additional requirements.

- ❑ Parallel Interface Cable (shielded) C83602* from D-SUB 25-pin (computer) to 36-pin Amphenol 57 Series (printer)

Note:

- ❑ *The asterisk (*) is a substitute for the last digit of the product number, which varies by location.*
- ❑ *To connect the printer to your PC or Macintosh using the USB interface (Windows 98 pre-installed PCs and iMac or G3 model Macintosh computers only), you must first purchase an USB conversion cable.*



Caution:

Use only interface cables which meet the specifications listed above. Using other cables not covered by EPSON warranties may cause the printer to malfunction.

Consumable products

The following ink cartridges and EPSON special media are available for your printer.

Ink cartridges

You can use the following cartridges with your printer.

Black ink cartridge	S020187
Color ink cartridge	S020191

Note:

The product numbers of ink cartridges vary by location.

EPSON special media

EPSON offers specifically designed media for ink jet printers to meet most high-quality printing needs.

EPSON Premium Ink Jet Plain Paper (A4)	S041214
EPSON 360 dpi Ink Jet Paper (A4)	S041059 S041025
EPSON 360 dpi Ink Jet Paper (Letter)	S041060 S041028
EPSON Photo Quality Ink Jet Paper (A4)	S041061 S041026
EPSON Photo Quality Ink Jet Paper (Letter)	S041062 S041029
EPSON Photo Quality Ink Jet Paper (Legal)	S041067 S041048
EPSON Photo Quality Ink Jet Card (A6)	S041054
EPSON Photo Quality Ink Jet Card (5 × 8")	S041121
EPSON Photo Quality Ink Jet Card (8 × 10")	S041122
EPSON Photo Quality Self Adhesive Sheet (A4)	S041106
EPSON Ink Jet Note Cards A6 (with envelopes)	S041147
EPSON Ink Jet Greeting Cards 5 × 8" (with envelopes)	S041148
EPSON Ink Jet Greeting Cards 8 × 10" (with envelopes)	S041149
EPSON Photo Quality Glossy Film (A4)	S041071

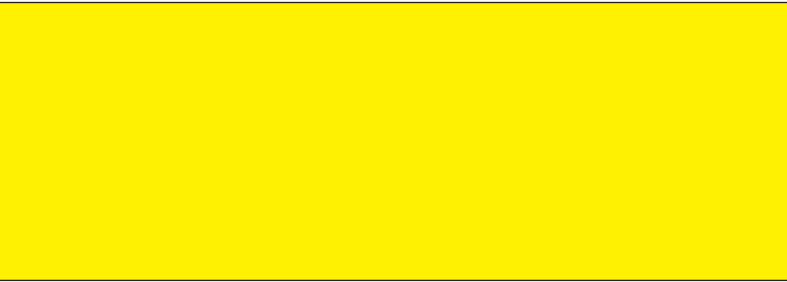
EPSON Photo Quality Glossy Film (Letter)	S041072
EPSON Photo Quality Glossy Film (A6)	S041107
EPSON Ink Jet Transparencies (A4)	S041063
EPSON Ink Jet Transparencies (Letter)	S041064
EPSON Photo Paper (A4)	S041140
EPSON Photo Paper (Letter)	S041141
EPSON Photo Paper (4 × 6")	S041134
EPSON Photo Paper (100 × 150 mm)	S041255
EPSON Photo Paper (200 × 300 mm)	S041254
EPSON Photo Paper Cards (A4)	S041177
EPSON Photo Stickers 16 (A6)	S041144
EPSON Photo Stickers 4 (A6)	S041176
EPSON Panoramic Photo Paper (210 × 594 mm)	S041145
EPSON Iron-On Cool Peel Transfer Paper (A4)	S041154
EPSON Iron-On Cool Peel Transfer Paper (Letter)	S041153 S041155
EPSON Matte Paper-Heavyweight (A4)	S041256 S041258 S041259

Note:

The availability of special media varies by location.

EPSON

Color Ink Jet Printer



EPSON STYLUS™ COLOR 660

Daily Use