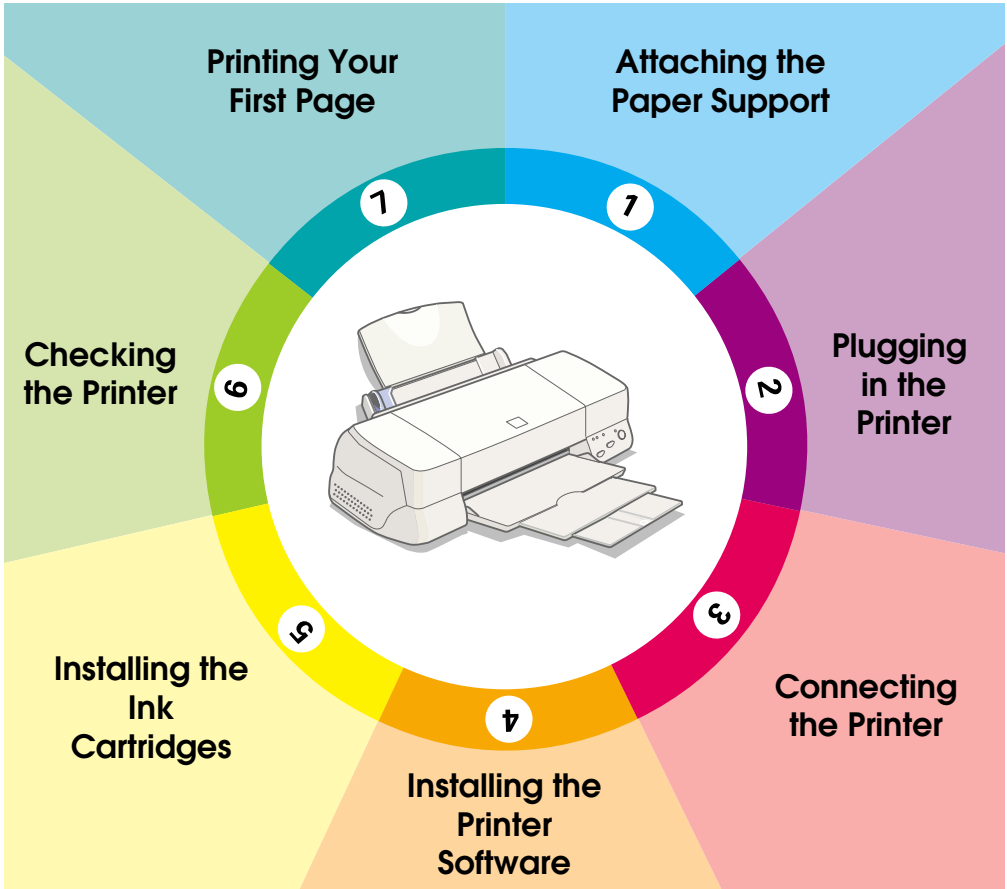


EPSON

Color Ink Jet Printer

EPSON STYLUS™ COLOR 1160

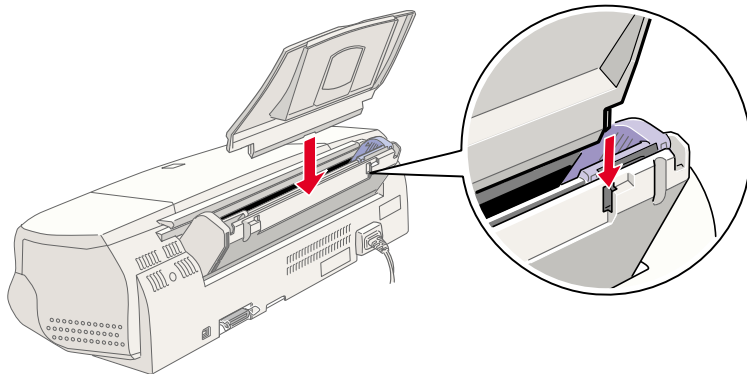


Setup Guide

1


Attaching the Paper Support

Insert the paper support into the slots at the rear of the printer.



2

Plugging in the Printer

1. Make sure that the printer is turned off. It is off when the  power button protrudes slightly from the surface of the control panel.
2. Check the label on the back of the printer to make sure the voltage required by the printer matches that of the electrical outlet you will be plugging it into. Also, make sure that you have the correct power cable for your power source.



Caution:

It is not possible to change the printer's voltage. If the rated voltage and your outlet voltage do not match, contact your dealer for assistance. Do not plug in the power cord.

3. If the power cord is not attached to the printer, connect it to the AC inlet on the back of the printer.
4. Plug the power cord into a properly grounded electrical outlet.

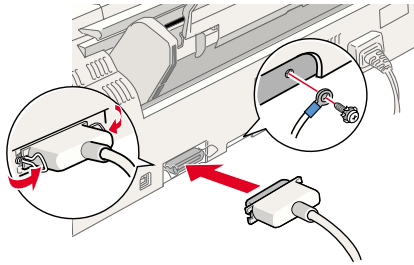
3

Connecting the Printer

Parallel interface for PCs

To connect the printer to your PC, you need a shielded, twisted-pair parallel cable.

1. Make sure both the printer and computer are turned off.
2. Plug the cable connector securely into the printer's interface connector. Then squeeze the wire clips together until they lock in place on both sides. If your cable has a ground wire, connect it to the ground connector below the interface connector.

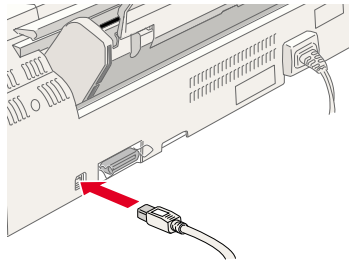


3. Plug the other end of the cable into the computer's parallel interface. If there is a ground wire at the computer end of the cable, connect it to the ground connector at the back of the computer.

Using a USB connection

To connect the printer to a USB port, you need a standard shielded USB cable. Follow these steps.

1. Plug the appropriate end of the cable into the USB port on the back of the printer. (The end that fits the printer has a different shape from the end that fits the computer.)



2. Connect the other end of the cable to the computer's USB port.

4

Installing the Printer Software

After connecting the printer to your computer, you need to install the software included on the “Printer Software for EPSON Stylus COLOR 1160” CD-ROM shipped with your printer.

Your printer software includes:

Printer driver and Utilities

The printer driver is the software that runs, or “drives,” your printer. With it, you can make settings such as print quality, speed, media type, and paper size. The Nozzle Check, Head Cleaning, and Print Head Alignment utilities help you keep your printer in top operating condition. EPSON Status Monitor 3 (for Windows) or EPSON StatusMonitor (for Macintosh) notifies you of printer errors and displays printer status information such as the amount of ink remaining. The Status Monitor also guides you when replacing ink cartridges.

Online Guides

The *online Reference Guide* and *Color Guide* help you learn more about your printer and color printing.

If you are using the floppy disk version of the software, make a backup copy of the EPSON printer software disk before you begin installation. If you wish to make a floppy disk version of the printer software on your CD-ROM, you can use the driver disk creation utility included on the CD.

Installing in Windows 95, 98, and NT 4.0 for parallel interfaces

1. Turn on your printer. If the New Hardware Found screen or any other Wizard appears when you turn on your computer, click Cancel.
2. Insert the printer software CD shipped with your printer in the CD-ROM drive. The Installer dialog box appears. (For floppy disk users, insert the disk in a disk drive, double-click the My Computer icon, then double-click the floppy disk drive icon, and then Setup.exe)
3. Click Install to start the printer software installation.
4. The Setup utility opens automatically. Follow the on-screen instructions to install the ink cartridge, check the print head nozzles, and clean the print head. When a message appears informing you that the setup is complete, click OK.

After setup is complete, go to step 7 to print your first page.

If the setup utility does not start, go to step 5 to install the ink cartridge using the printer’s control panel.

Installing in Windows for USB interfaces (Windows 98 pre-installed PCs only)

If you connected your printer using the USB interface, you need to install the EPSON USB Printer Device Driver and the printer software included in the printer software CD-ROM.

Note:

To connect your printer to the USB interface on your PC, you must purchase a USB cable.

The installation for the USB Printer Device Driver allows you to install the printer software as well. You do not need to install the printer software separately. Follow the steps in this section to install the software.



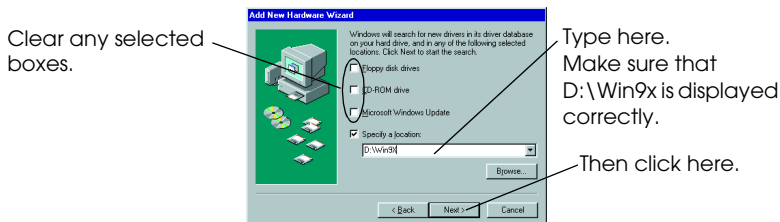
Caution:

Make sure that you really want to install the USB Printer Device Driver before beginning the installation process. Do not click CANCEL during installation, as this can create problems with the installed driver.

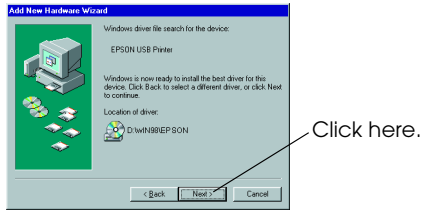
1. Make sure Windows 98 is running.
2. Turn on your printer. The following dialog box appears.



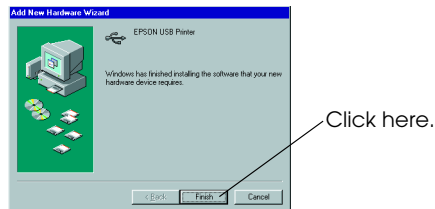
3. Click Next and follow the instructions on the screen.
4. When the following dialog box appears, select Specify a location and type D:\Win9x in the text box (if your CD-ROM drive has a drive letter other than "D", substitute the appropriate letter) or click Browse, then display the contents of the CD-ROM in the window that appears and double-click "Win9x". Insert the printer software CD-ROM, then click Next.



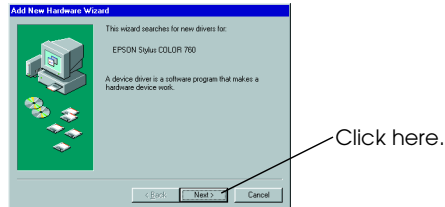
5. Click Next to begin the device driver installation.



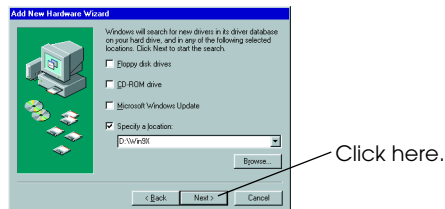
6. After the installation is completed, the following dialog box appears. Click Finish.



7. The printer software installation automatically starts and the following dialog box appears. Click Next.



8. When the dialog box below appears, click Next and follow the instructions on the screen.



If the Wizard instructs you to restart, you must restart your computer. After installation, if the setup utility does not start, go to step 5 to install the ink cartridge using the printer's control panel.

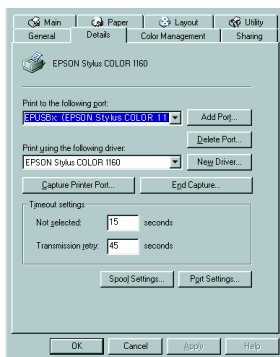
Ensuring that the USB Driver was installed correctly

Use the following procedure to confirm that the USB driver was installed correctly.

1. Click the Start button, point to Settings and click on the Printers folder. Make sure that the icon for the printer appears in the Printers folder.
2. Click the printer icon, and select Properties from the File menu.



3. Click the Details tab and make sure that EPUSBx: (EPSON Stylus COLOR 1160) is displayed in the Print to the following port list box.



4. If the correct port is not displayed, refer to the Troubleshooting section of the Daily Use guide or the Online Guide.

Installing in Macintosh



Caution:

Turn off all virus protection programs before you install your printer software.

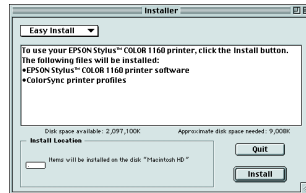
Note:

To connect your printer to the USB interface on your Macintosh, you must purchase a USB cable.

Follow these steps to install your printer software.

1. Turn on your Macintosh and insert the software CD in the CD-ROM drive.
2. The EPSON printer software disk opens automatically.

3. If a single Installer icon appears, double-click the icon. If separate folders containing installer icons for several languages appear, double-click the folder for your preferred language, then double-click the Installer icon inside it.
4. After the initial screen appears, click Continue. The following dialog box appears.

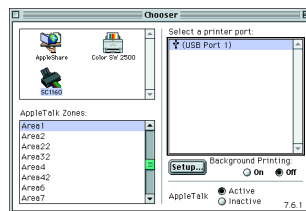


5. To install all of the printer software included on your printer software CD-ROM, make sure the Install Location box displays the correct disk drive and click Install.
6. When a message appears informing you that the installation is finished, click Restart to complete the installation and restart your computer.

Selecting your printer in the Chooser

After you have installed the printer software, you need to open the Chooser to select your printer. You have to choose the printer the first time you use it or whenever you want to switch to another printer. Your Macintosh will always print using the last printer selected.

1. Choose Chooser from the Apple menu. Then click your printer's icon and the port your printer is connected to.



2. Click the Background Printing radio buttons to turn background printing on or off.

When background printing is on, you can use your Macintosh while it is preparing a document for printing. In order to use the EPSON Monitor3 utility to manage print jobs, background printing must be turned on.

3. Close the Chooser.

Installing in Windows 3.1

Follow these steps to install the software in Windows 3.1.

1. Make sure Windows 3.1 is running and the Program Manager window is open.
2. Insert the printer software CD shipped with your printer in the CD-ROM drive. (If you use the floppy disk version, insert it in a disk drive.)
3. Choose RUN from the File menu. The Run dialog box appears. In the Command Line box, type D:SETUP and click OK. If the CD-ROM drive has a drive letter other than "D" or if you are using the floppy disk version, substitute the appropriate letter.
4. The installation program begins copying the printer software files.
5. When the installation is complete, click OK to exit the installation program.

The installation program automatically selects this printer as the default printer for Windows applications.

5

Installing the Ink Cartridges

Using the setup utility for Windows 95, 98, and NT 4.0

If you have Windows 95, 98, or NT 4.0 installed on your computer, the Setup utility should open automatically when your printer software installation is complete. Follow the on-screen instructions to complete the setup and proceed to step 7, "Printing Your First Page".

The Setup utility cannot be accessed by Windows 3.1 and Macintosh users. Please refer to the following section, "Using the Printer's control panel" and to step 6, "Checking the Printer" for instructions on completing the setup using the printer's control panel.

Using the printer's control panel

When you can not access the setup utility, use the printer's control panel to install the ink cartridge.

Before installing the ink cartridges, note the following.



Warning:

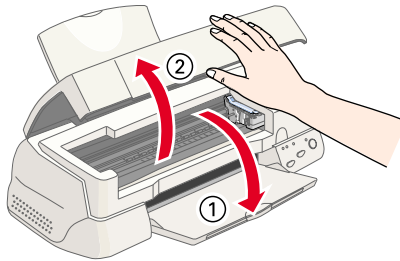
The ink cartridges are self-contained units. Under ordinary use, ink will not leak from a cartridge. If ink does get on your hands, wash them thoroughly with soap and water. If ink gets into your eyes, flush them immediately with water.


Note:




Do not open the ink cartridge packages until just before you install them, or the ink may dry up.

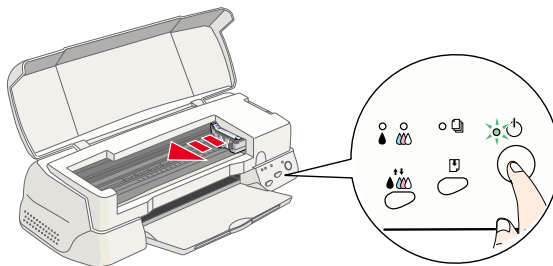
Install the ink cartridges as follows:

1. Lower the output tray; then open the printer cover.



2. Turn on the printer by pressing the  power button.

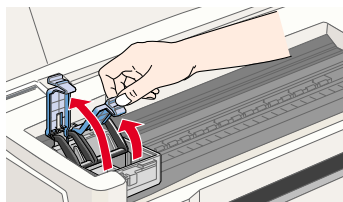
The print head moves to the left, which is the ink cartridge installation position. The  power light flashes and the  and  ink out lights come on.



Caution:

Do not move the print head by hand. Otherwise you may damage the printer.

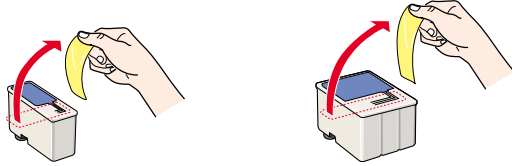
3. Lift up the ink cartridge clamps.



Note:

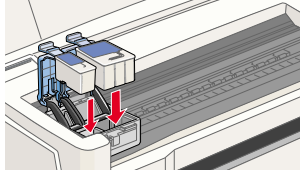
Do not remove the small sponges attached to the ink cartridge clamps.

4. Open the ink cartridge packages. Next, remove only the yellow tape seals from each cartridge.



Caution:

- You must remove the yellow tape seals from the cartridges before installing them; otherwise, a fatal error will occur and the cartridges will become unusable.
 - Do not remove the blue portion of the tape seals from the cartridges; otherwise, the cartridges may become clogged and unable to print.
 - Do not remove the tape seals from the bottom of the cartridges; otherwise, ink will leak.
5. Place the cartridges gently into their holders with the labels facing up. The color ink cartridge, which is larger, goes on the right and the black ink cartridge goes on the left. Do not press down on the cartridges.



Note:


Install both ink cartridges. If either of the cartridges is not installed, the printer will not work.

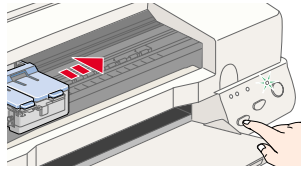
6. Press the ink cartridge clamps down until they lock in place.


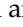


Caution:

Once you install the ink cartridges, do not open their clamps again until you replace the ink cartridges; otherwise, the cartridges may become unusable.

7. Press the  cleaning button. The printer moves the print head and begins charging the ink delivery system. This process takes about one and a half minute.



While the ink is charging, the  power light flashes and the printer produces a variety of mechanical sounds. These sounds are normal. When the ink delivery system has been charged, the print head returns to its home (far right) position and the  power light comes on.



Caution:

Never turn off the printer while the  power light is flashing.

8. Close the printer cover.



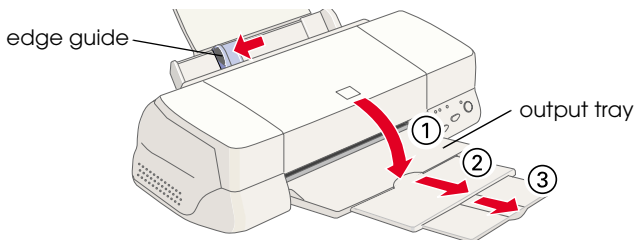
Checking the Printer

Before printing your first page, you need to make sure the printer is working correctly by printing a nozzle check page and, if necessary, cleaning the print head.

Loading paper

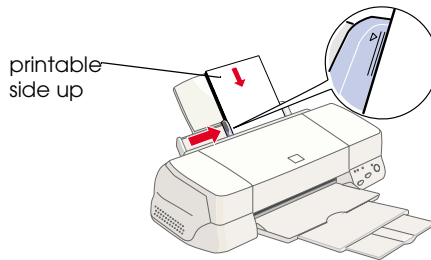
Follow these steps to load plain paper in the printer.

1. Lower the output tray and slide out the extension. Next, slide the left edge guide so that the distance between the edge guides is slightly wider than the width of your paper.



2. Fan a stack of paper; then tap it on a flat surface to even the edges.


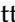
3. Load the stack of paper with the printable side up and the right edge of the paper resting against the right side of the sheet feeder. Then slide the left edge guide against the left edge of the paper.

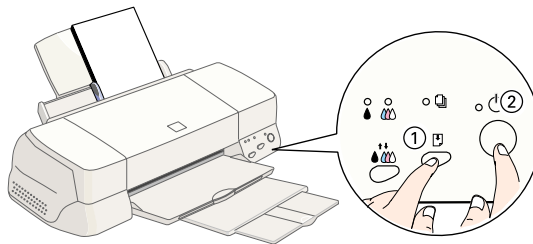


Note:

- ❑ Always load paper into the sheet feeder short edge first.
- ❑ Make sure the paper stack fits under the arrow mark inside the edge guide.

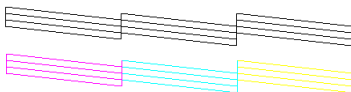
Checking the print head nozzles

Hold down the  load/eject button (① in the illustration below) and press the  power button (② in the illustration below) to turn on the printer. Then release both buttons.

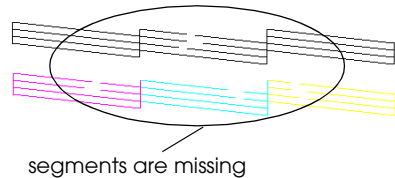


Here are sample printouts.

Good sample







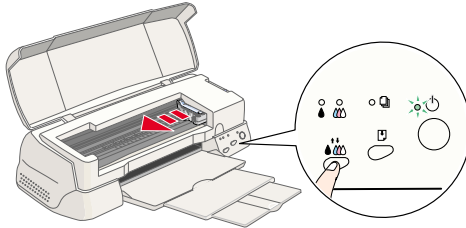
Print head needs to be cleaned




If the nozzle check page does not print satisfactorily (for example, if any segment of the printed lines is missing), then you should clean the print head as explained below. If the printout was satisfactory, you are ready to print your first page. See “Printing Your First Page” for instructions.

Cleaning the print head

1. Make sure that the  power light is on and that both the  black and  color ink out lights are off.
2. Hold down the  cleaning button for three seconds.




The printer starts cleaning the print head and the  power light begins flashing. Print head cleaning takes about thirty seconds to complete.



Caution:

Never turn off the printer while the  power light is flashing. Doing so may damage the printer.

3. When the  power light stops flashing, print a nozzle check pattern to confirm that the head is clean and to reset the cleaning cycle.

If print quality hasn't improved after repeating the nozzle checking and cleaning procedures four or five times, contact your dealer.

7

Printing Your First Page

After making sure your printer is operating correctly, you are ready to print your first page. To familiarize yourself with the printer software, we recommend printing one of the sample files provided with your printer software. Follow the instructions for Windows or Macintosh in this section.

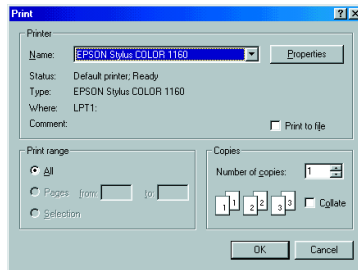
If you choose to print your own document instead, select the appropriate Paper Size and Media Type setting in your application software, then print the document as explained from step 4, below. (See your software manual for details on how to use your application.)

For Windows

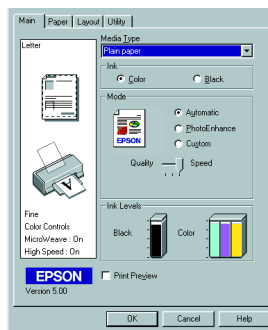
Follow these steps to print the sample file.

1. Make sure A4 or Letter size EPSON Photo Quality Ink Jet Paper is loaded in the printer.

2. Insert the printer driver CD-ROM. If the Installer dialog box appears, click Quit.
3. Double-click the My Computer icon. Click the CD-ROM icon, select Open from the File menu, then open the sample.bmp file.
4. To change the printer driver settings, open the File menu and select Print. The Print dialog box appears. (This example is from Paint).



5. Make sure your printer is selected and then click Properties. The printer driver appears.



6. Click the Main tab, then click anywhere in the Media Type box and select Photo Quality Ink Jet Paper.
7. Select Color as the Ink setting.
8. Make sure Automatic is selected as the Mode setting.
When Automatic is selected, the printer software optimizes other settings according to the Media Type and Ink settings you make.
9. Click the Paper tab, then click anywhere in the Paper Size box and select the paper size you loaded in the printer.
10. Click OK at the bottom of the window. You return to the Print dialog box (or a similar dialog box).

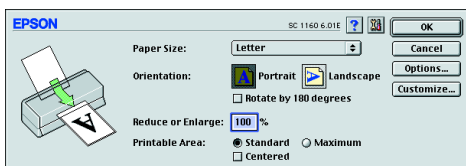
11. Click Close, OK, or Print to print. You may need to click a combination of these buttons.


While printing, the EPSON Progress Meter will appear, showing the printing progress and the status of your printer.

For Macintosh

Follow these steps to print the sample file.

1. Make sure A4 or Letter size paper is loaded in the printer.
2. Insert the printer software CD.
3. Open the EPSON folder and double-click the README file.
4. Choose Page Setup from the File menu. The following dialog box appears.

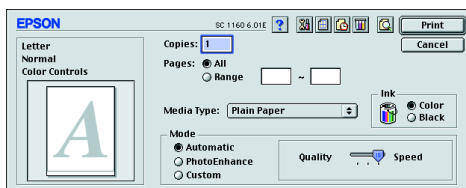


5. Select the paper size you loaded in the printer from the Paper Size list.
6. Select  Portrait as the Orientation option.
7. After making your settings, click OK to close the Page Setup dialog box.

Note:

You cannot print from the Page Setup dialog box. You can only print from the Print dialog box.

8. Choose Print from the File menu. The Print dialog box appears.



9. Select Plain Paper from the Media Type list.
10. Select Color as the Ink option.
11. Make sure Automatic is selected as the Mode setting.

When Automatic is selected, the printer software optimizes other settings according to the Media Type and Ink settings you make.

12. Click Print to start printing.