

# Setup

English

4048847-00  
xxx

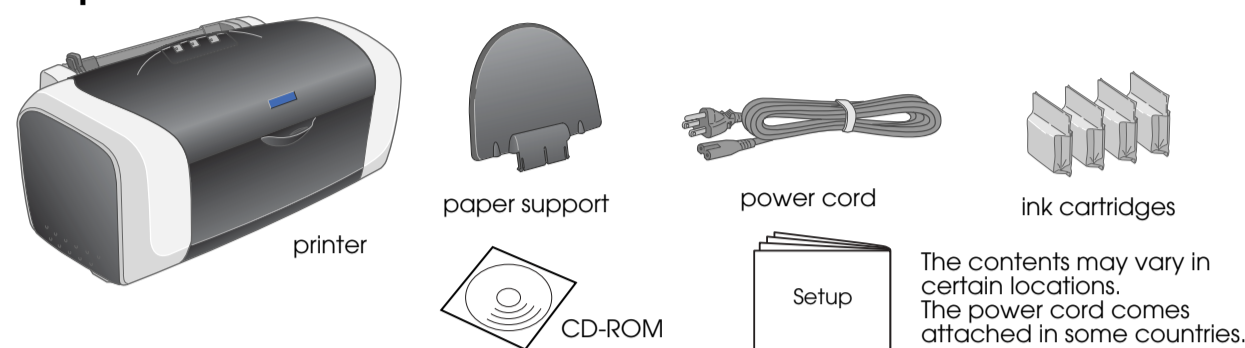
Cautions and Notes

**Caution:** must be observed to avoid damage to your equipment.

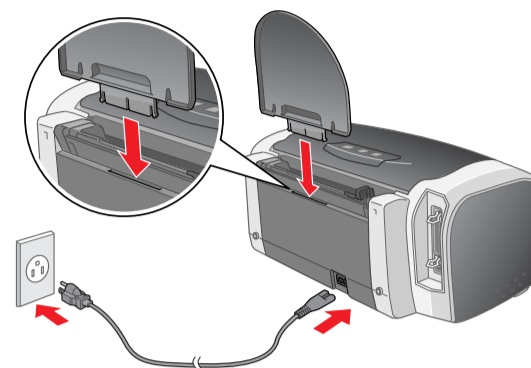
**Notes:** contain important information and useful tips on the operation of your printer.

## 1 Unpacking

1. Remove the contents from the box. Remove all tape and packing material from the printer. Be sure not to touch the ribbon cable inside the printer.

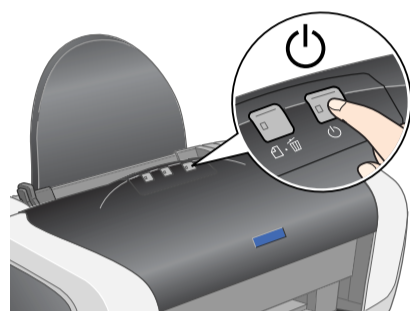


2. Attach the paper support and plug in the printer.

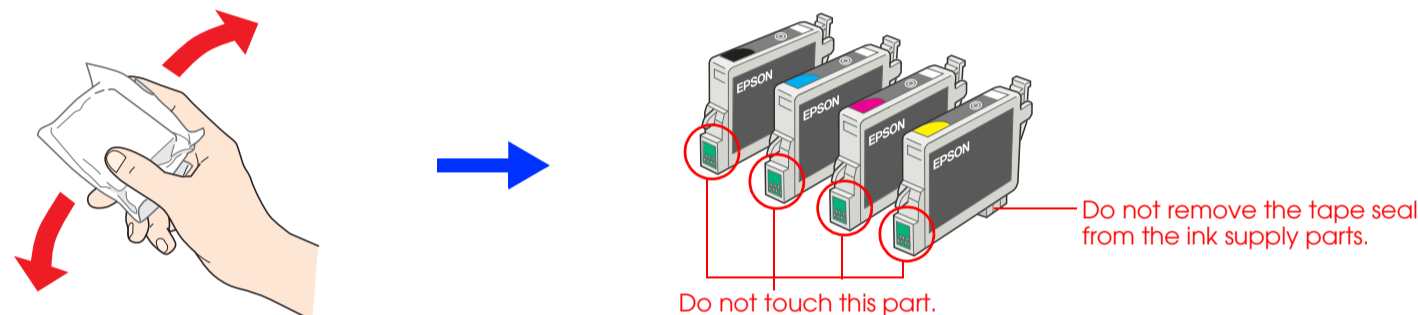


## 2 Installing the Ink Cartridges

1. Press the power button to turn on the printer.



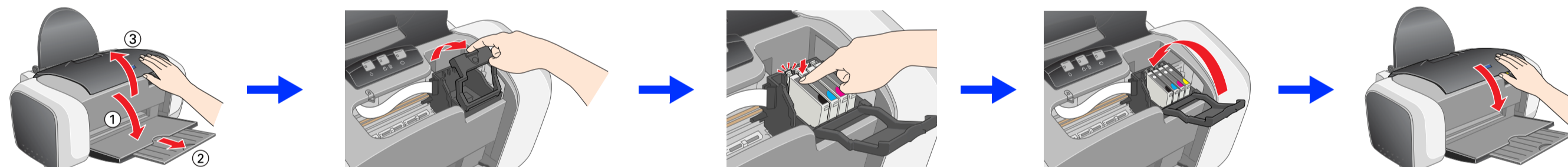
2. Shake the ink cartridge four or five times before opening the package, and remove the ink cartridges from their protective bags.



**Caution:**

- Be careful not to break the hook on the side of the ink cartridge when you remove it from the protective bag.
- Do not shake the ink cartridge after removing it from the bag; this can cause leakage.
- Do not remove or tear the label on the cartridge; this can cause leakage.

3. Install the ink cartridges as shown below.



**Caution:**

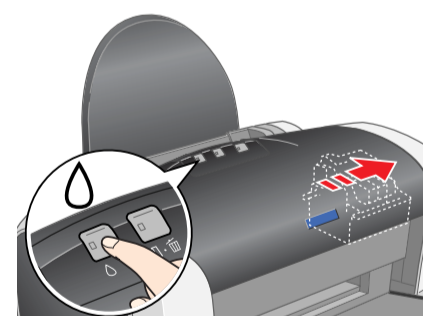
- Push the ink cartridge down until it clicks into place.
- Do not move the print head by hand; otherwise, you may damage the printer.
- Do not load paper until ink charging is complete.

**Note:**

Install all ink cartridges. The printer will not work unless all cartridges are installed properly.

4. Press the ink button.

The printer begins ink charging. It takes about **one and a half minutes**. While charging, the printer produces a variety of mechanical sounds. This is normal. When the green light stops flashing, ink charging is complete.



**Caution:**

Do not turn off the printer during the ink charging process.

**Note:**

The ink cartridges packaged with your printer are partly used during initial setup. In order to produce high quality printouts, the print head in your printer will be fully charged with ink. This one-off process consumes a quantity of ink and subsequent cartridge sets will last for their full rated life.

See the other side of this sheet to install the printer software.

## Safety Instructions

Read all of the instructions in this section when setting up and using your printer.

### When choosing a place for the printer

- Avoid places subject to rapid changes in temperature and humidity. Also, keep the printer away from direct sunlight, strong light, or heat sources.
- Avoid places subject to dust, shocks, or vibrations.
- Leave enough room around the printer to allow for sufficient ventilation.
- Place the printer near a wall outlet where the plug can be easily unplugged.
- Place the printer on a flat, stable surface that extends beyond the base of the printer in all directions. If you place the printer by the wall, leave more than 10 cm between the back of the printer and the wall. The printer will not operate properly if it is tilted at an angle.
- When storing or transporting the printer, do not tilt it, stand it on its side, or turn it upside down. Otherwise ink may leak from the cartridge.

### When choosing a power source

- Use only the type of power source indicated on the printer's label.
- Use only the power cord that comes with this product. Use of another cord may result in fire or electric shock.
- This product's power cord is for use with this product only. Use with other equipment may result in fire or electric shock.
- Be sure your AC power cord meets the relevant local safety standard.
- Do not use a damaged or frayed power cord.
- If you use an extension cord with the printer, make sure that the total ampere rating of the devices plugged into the extension cord does not exceed the cord's ampere rating. Also, make sure that the total ampere rating of all devices plugged into the wall outlet does not exceed the wall outlet's ampere rating.
- If you plan to use the printer in Germany, the building installation must be protected by a 10 or 16 amp circuit breaker to provide adequate short-circuit protection and over-current protection for this printer.

### When handling ink cartridges

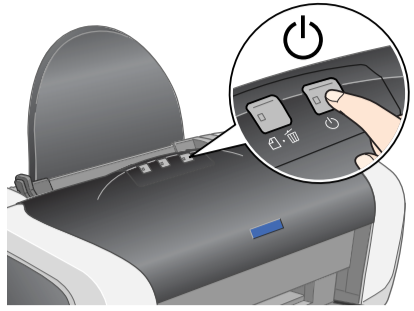
- Keep ink cartridges out of the reach of children. Do not allow children to drink from or otherwise handle the cartridges.
- Do not open the ink cartridge packages until just before you install them.
- Shake the new ink cartridges four or five times before opening the packages.
- Do not shake the ink cartridges after opening the packages; this can cause leakage.
- Be careful not to break the hooks on the side of the ink cartridge when you remove it from the package.
- Be careful when you handle used ink cartridges, as there may be some ink remaining around the ink supply port. If ink gets on your skin, wash the area thoroughly with soap and water. If ink gets into your eyes, flush them immediately with water. If discomfort or vision problems remain after a thorough flushing, see a doctor immediately.
- Do not remove or tear the label on the cartridge; this can cause leakage.
- Do not touch the green IC chip on the side of the cartridge.
- The IC chip on this ink cartridge retains a variety of cartridge related information, such as the amount of ink remaining, so that a cartridge may be removed and reinserted freely. However, each time the cartridge is inserted, some ink is consumed because the printer automatically performs a reliability check.
- Store ink cartridge with its label facing upward. Do not store cartridge upside down.

### When using the printer

- Do not put your hand inside the printer or touch the ink cartridges during printing.
- Do not block or cover the vents and openings in the printer.
- Do not attempt to service the printer yourself.
- Unplug the printer and refer servicing to qualified service personnel under the following conditions: The power cord or plug is damaged; liquid has entered the printer; the printer has been dropped or the cabinet damaged; the printer does not operate normally or exhibits a distinct change in performance.
- Do not insert objects through the slots in the printer.
- Take care not to spill liquid on the printer.
- Leave the ink cartridges installed. Removing the cartridges can dehydrate the print head and may prevent the printer from printing.

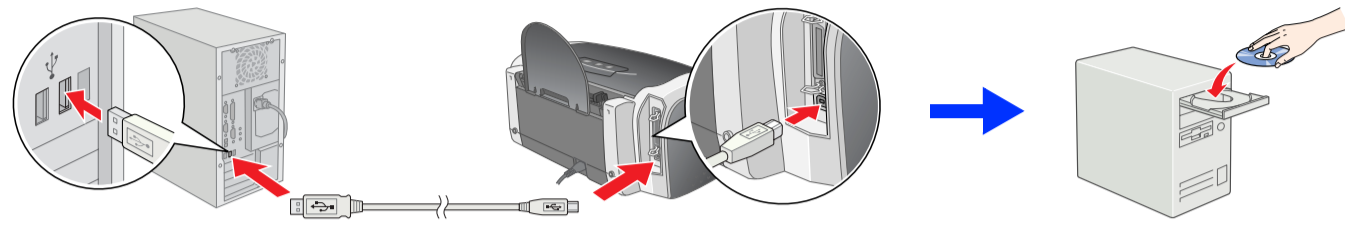
# 3 Installing the Printer Software

1. Press the  power button to turn off the printer. The green light goes off.

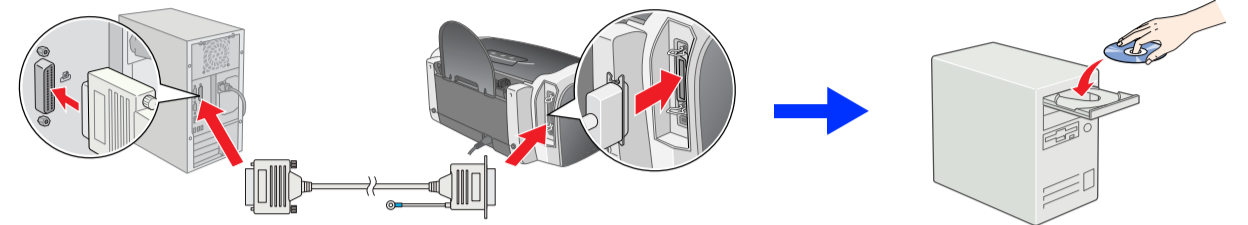


2. Connect the printer and computer with a USB or parallel cable, then insert the printer software CD into the CD-ROM drive.

**USB**



**Parallel**



3. Install the printer software.

Select your country or area of residence if the selection window appears. Then except where otherwise instructed, click or double-click the areas circled in red to proceed.

**Caution:**  
Turn off all virus protection programs before installing the printer software.

**Note:**  
If the language selection window appears, select your preferred language.



Follow the on-screen instructions.  
If the installer dialog box does not appear,  
double-click EPSETUP.EXE on the CD-ROM.

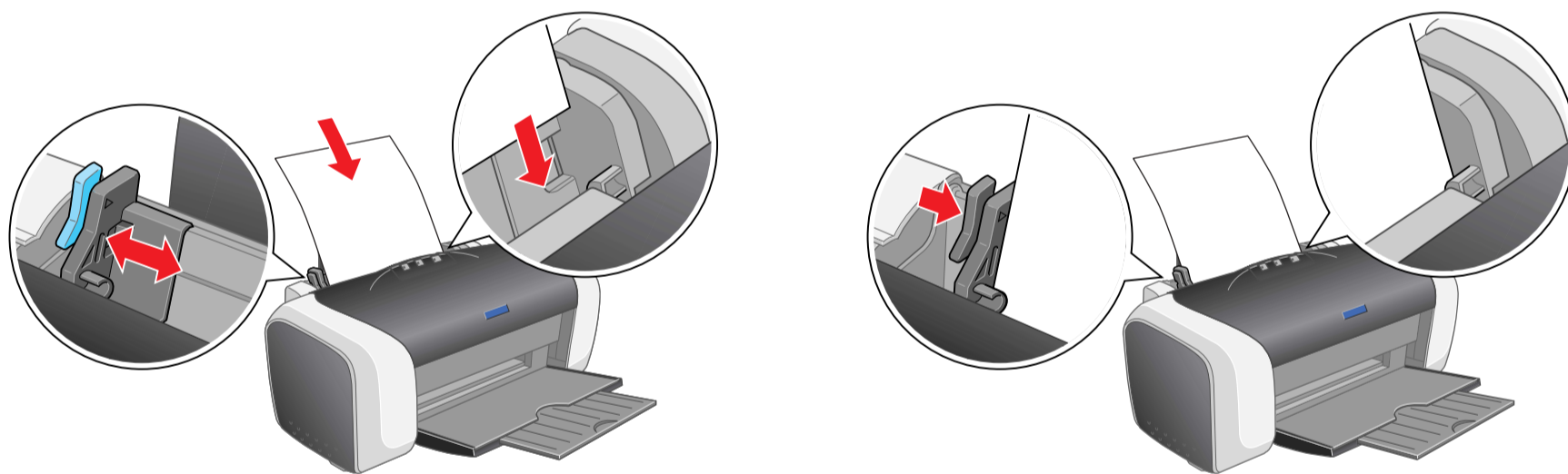
After installation is complete, see the *Reference Guide* for detailed information about printing from your computer for the first time.

The CD-ROM includes EPSON PhotoQuicker.

EPSON PhotoQuicker is a fun and easy to use program with a number of features that help you create outstanding photos. It also allows you to create borderless photos.

For more details, double-click the **ESC65 Software Guide** icon on the desktop to view *Photo Print Software Setup*.

# 4 Loading Paper



**Note:**  
To adjust the left edge guide, hold down the locking tab and slide the guide against the paper stack.

# 5 Viewing the Reference Guide

The *Reference Guide* provides detailed information about printing from a computer, printer maintenance, problem solving, and safety.

To view the *Reference Guide*, double-click the **ESC65 Reference Guide** icon on the desktop.

You can also access the *Reference Guide* via the Start menu. To do so, click **Start**, point to **All Programs** in Windows XP or **Programs** in Windows Me, 98, 95, or 2000, point to **EPSON**, then select **ESC65 Reference Guide**.

