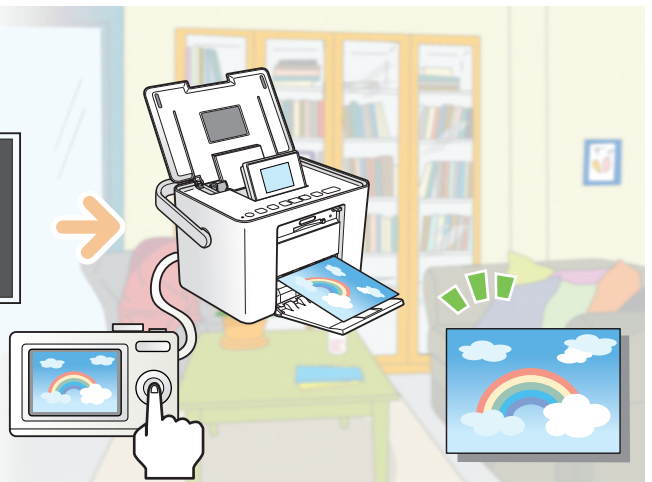
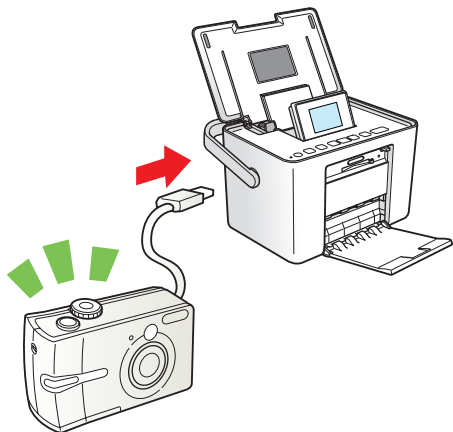
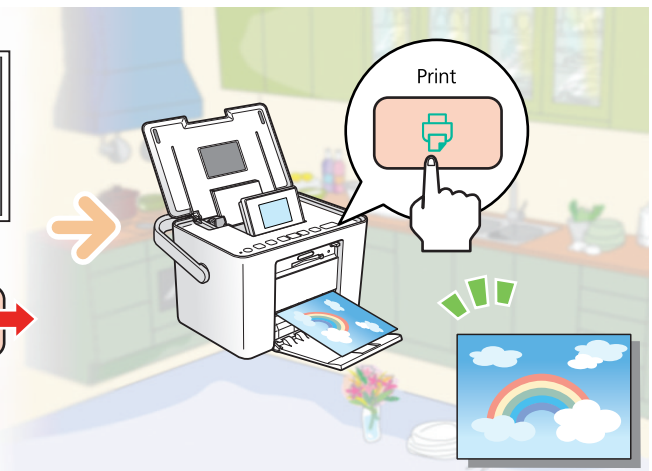
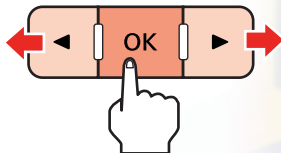
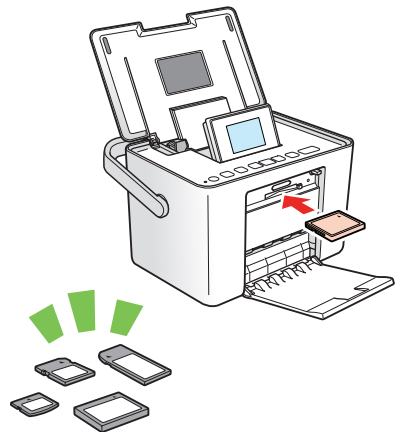




# User's Guide

- for use without a computer -



---

# Contents

## ***Safety Instructions***

---

Warnings, Cautions, and Notes . . . . .	4
Important Safety Instructions . . . . .	4

## ***Printer Parts and Functions***

---

Control Panel Functions . . . . .	8
Understanding the LCD Screen . . . . .	9
Printer Parts . . . . .	10

## ***Preparing to Print***

---

Inserting a Memory Card . . . . .	11
Loading Paper. . . . .	15
Paper Handling Instructions . . . . .	15
Choosing a Group of Photos. . . . .	16

## ***Basic Photo Printing***

---

Changing the View of Photos on the LCD Screen . . . . .	18
Printing Selected Photos. . . . .	18
Printing Groups of Photos. . . . .	18
Printing Camera-Selected DPOF Photos . . . . .	19

Printing on Photo Stickers. . . . .	20
-------------------------------------	----

## ***Printing Options***

---

Making Paper and Print Layout Settings. . . . .	21
Editing Your Photo . . . . .	21

## ***Printing From an External Device***

---

Printing From a PictBridge-Enabled Camera . . . . .	24
Printing From a Bluetooth Device . . . . .	25

## ***PictureMate Preferences***

---

Making Settings. . . . .	30
Customizing ID Photos and Printing . . . . .	31

## ***Replacing the Photo Cartridge***

---

Checking the Photo Cartridge Status . . . . .	32
Replacing the Photo Cartridge . . . . .	32

## ***Transporting PictureMate***

---

***Maintaining PictureMate***

---

Checking and Cleaning the Print Head Nozzles ..... 37

Aligning the Print Head ..... 38

Cleaning PictureMate ..... 39

***Troubleshooting***

---

Error/Warning Messages ..... 40

Printer Power Problems ..... 41

Print and Noise Problems ..... 42

Photo Quality Problems ..... 42

Problems With Paper Feeding ..... 44

Miscellaneous Printout Problems ..... 45

Contacting Customer Support ..... 45

***Photo Cartridge, Paper, and Options***

---

Photo Cartridge and Paper ..... 47

Options ..... 47

***Printer Specifications*** ..... 48

---

***Summary of Panel Settings*** ..... 52

---



## Photo Printer

# PictureMate™ PM 235

No part of this publication may be reproduced, stored in a retrieval system, or transmitted in any form or by any means, electronic, mechanical, photocopying, recording, or otherwise, without the prior written permission of Seiko Epson Corporation. The information contained herein is designed only for use with this Epson printer. Epson is not responsible for any use of this information as applied to other printers.

Neither Seiko Epson Corporation nor its affiliates shall be liable to the purchaser of this product or third parties for damages, losses, costs, or expenses incurred by the purchaser or third parties as a result of accident, misuse, or abuse of this product or unauthorized modifications, repairs, or alterations to this product, or (excluding the U.S.) failure to strictly comply with Seiko Epson Corporation's operating and maintenance instructions.

Seiko Epson Corporation shall not be liable for any damages or problems arising from the use of any options or any consumable products other than those designated as Original Epson Products or Epson Approved Products by Seiko Epson Corporation.

Seiko Epson Corporation shall not be held liable for any damage resulting from electromagnetic interference that occurs from the use of any interface cables other than those designated as Epson Approved Products by Seiko Epson Corporation.

EPSON® is a registered trademark and PictureMate™ and Exceed Your Vision are trademarks of Seiko Epson Corporation.

PRINT Image Matching™ and the PRINT Image Matching logo are trademarks of Seiko Epson Corporation. Copyright © 2001 Seiko Epson Corporation. All rights reserved.

DPOF™ is a trademark of CANON INC., Eastman Kodak Company, Fuji Photo Film Co., Ltd. and Matsushita Electric Industrial Co., Ltd. The Bluetooth® word mark and logos are owned by the Bluetooth SIG, Inc. and licensed to Seiko Epson Corporation.

SDHC™ is a trademark.

Memory Stick, Memory Stick Duo, Memory Stick PRO, Memory Stick PRO Duo, Memory Stick PRO-HG Duo, Memory Stick Micro, MagicGate Memory Stick, and MagicGate Memory Stick Duo are trademarks of Sony Corporation.

xD-Picture Card™ is a trademark of Fuji Photo Film Co., Ltd.

*General Notice: Other product names used herein are for identification purposes only and may be trademarks of their respective owners.*

*Epson disclaims any and all rights in those marks.*

Copyright © 2009 Seiko Epson Corporation. All rights reserved.

---

# Safety Instructions

---

## Warnings, Cautions, and Notes



### Warnings

*must be followed carefully to avoid bodily injury.*



### Cautions

*must be observed to avoid damage to your equipment.*

### Notes

*contain important information and useful tips on the operation of your printer.*

---

## Important Safety Instructions

Read all of the instructions in this section before using your printer. Also, be sure to follow all warnings and instructions marked on the printer.

## When choosing a place for the printer

Observe the following when choosing a place for the printer:

- Place the printer on a flat, stable surface that extends beyond the base of the printer in all directions. If you place the printer by the wall, leave more than 10 cm between the back of the printer and the wall. The printer will not operate properly if it is tilted at an angle.
- When storing or transporting the printer, do not tilt it, stand it on its side, or turn it upside down. Otherwise, ink may leak from the cartridge.
- Leave enough space in front of the printer for the paper to be fully ejected.
- Avoid places subject to rapid changes in temperature and humidity. Also, keep the printer and the AC adapter away from direct sunlight, strong light, water, or heat sources.
- Do not leave the printer in a place subject to high temperature, such as in a car. Also, keep the printer away from direct sunlight, strong light, and heat sources. Otherwise, the printer may be damaged or ink may leak.
- Avoid places subject to dust, shock, or vibration.

- ❑ Leave enough room around the printer to allow for sufficient ventilation.
- ❑ Place the AC adapter near a wall outlet where the plug can be easily unplugged.
- ❑ Do not place or store the printer and the AC adapter outdoors.

## ***When setting up your printer***

Observe the following when setting up the printer:

- ❑ Do not block or cover the vents and openings in the printer.
  - ❑ Power supply cords should be placed to avoid abrasions, cuts, fraying, crimping, and kinking. Do not place objects on top of power-supply cords and do not allow the AC adapter or power-supply cords to be stepped on or run over. Be particularly careful to keep all power-supply cords straight at the ends and the points where they enter and leave the AC adapter.
  - ❑ Use only the power-supply cords that comes with this product. Use of another cord may result in fire or electrical shock, or injury.
  - ❑ The AC adapter model A431H is designed for use with the printer with which it was included. Do not attempt to use it with other electronic devices unless specified.
- ❑ Use only the type of power source indicated on the AC adapter's label, and always supply power directly from a standard domestic electrical outlet with the AC power cord that meets the relevant local safety standards.



### ***Warning:***

*Refer to the rating plate for the voltage and check that the appliance voltage corresponds to the supply voltage.*

- ❑ Avoid using outlets on the same circuit as photocopiers or air control systems that regularly switch on and off.
- ❑ Avoid using electrical outlets controlled by wall switches or automatic timers.
- ❑ Keep the entire computer system away from potential sources of electromagnetic interference, such as loudspeakers or the base units of cordless telephones.
- ❑ Do not use a damaged or frayed power cord and the AC adapter.
- ❑ If you use an extension cord with the printer, make sure that the total ampere rating of the devices plugged into the extension cord does not exceed the cord's ampere rating. Also, make sure that the total ampere rating of all devices plugged into the wall outlet does not exceed the wall outlet's ampere rating.
- ❑ Never disassemble, modify, or attempt to repair the AC adapter, power cord, printer, and options by yourself except as specifically explained in the printer's guides. Doing so may result in injury, electric shock, or fire.

- ❑ Unplug the printer and the AC adapter, and refer servicing to qualified service personnel under the following conditions:  
The power cord or plug is damaged; liquid has entered the printer or the AC adapter; the printer or the AC adapter has been dropped or the casing damaged; the printer or the AC adapter does not operate normally or exhibits a distinct change in performance. (Do not adjust controls that are not covered by the operating instructions.)
- ❑ Do not use with wet hands.
- ❑ If damage occurs to the plug, replace the cord set or consult a qualified electrician. If there are fuses in the plug, make sure you replace them with fuses of the correct size and rating.
- ❑ If you plan to use the AC adapter in Germany, the building installation must be protected by a 10 or 16 amp circuit breaker to provide adequate short-circuit protection and over-current protection for this printer.

### ***Note on handling the AC power cord for Singapore users***

Safety requirements

Mains plug:

Use a 2-pin mains plug that is certified to IEC 83 Standard C5.

Flexible cord:

Use a double insulated flexible cord that is certified\* to the relevant IEC or BS standards.

Appliance connector:

Use an appliance connector certified\* to the relevant IEC320.

\* certified by member of IECEE CB Scheme.

## ***When using the printer***

Observe the following when using the printer:

- ❑ If you use the printer in places where the use of electronic devices is limited, such as in airplanes or hospitals, follow all instructions in those places.
- ❑ Do not insert objects through the slots in the printer.
- ❑ Take care not to spill liquid on the printer and the AC adapter.
- ❑ Do not put your hand inside the printer or touch the photo cartridge during printing.
- ❑ Do not use aerosol products that contain flammable gases inside or around this product. Doing so may cause fire.
- ❑ Always turn the printer off using the ⏻ On button. Do not unplug the printer or turn off the power to the outlet until the power light goes out.
- ❑ Before transporting the printer, make sure that the photo cartridge is in place.
- ❑ Leave the photo cartridge installed. Removing the cartridge can dehydrate the print head and may prevent the printer from printing.



## ***When using a memory card***

- ❑ Use only memory cards compatible with the printer. See "Inserting a Memory Card" on page 11

## ***When using LCD screen***

- ❑ The LCD screen may contain a few small bright or dark spots, and because of its features it may have an uneven brightness. These are normal and do not indicate that it is damaged in any way.
- ❑ Only use a dry, soft cloth to clean the LCD screen. Do not use liquid or chemical cleansers.
- ❑ If the LCD screen on your printer's control panel is damaged, contact your dealer. If the liquid crystal solution gets on your skin, wash them thoroughly with soap and water. If the liquid crystal solution gets into your eyes, flush them immediately with water. If discomfort or vision problems remain after a thorough flushing, see a doctor immediately.

## ***When using the optional Bluetooth Photo Print Adapter***

Refer to the Bluetooth Photo Print Adapter's documentation for the safety instructions.

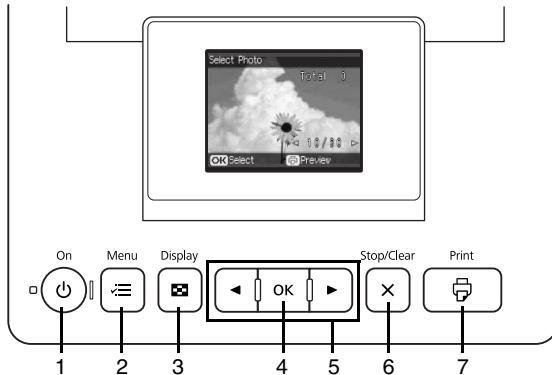
## ***When handling photo cartridges***

Observe the following when handling photo cartridges:

- ❑ Do not shake photo cartridge after removing it from the bag; this can cause leakage.
- ❑ Do not remove or tear the label on the cartridge; this can cause leakage.
- ❑ Use the photo cartridge before the date printed on the cartridge carton.
- ❑ Do not disassemble or remodel the photo cartridge, otherwise you may not be able to print normally.
- ❑ After bringing a photo cartridge inside from a cold storage site, allow it to warm up at room temperature for at least three hours before using it.
- ❑ Store photo cartridges in a cool, dark place.
- ❑ The IC chip on the photo cartridge retains a variety of cartridge-related information, such as the photo cartridge status so that the cartridge may be removed and reinstalled freely.
- ❑ If ink gets on your skin, wash it off with soap and water. If it gets in your eyes, flush them immediately with water. If you still have discomfort or vision problems, see a doctor immediately.

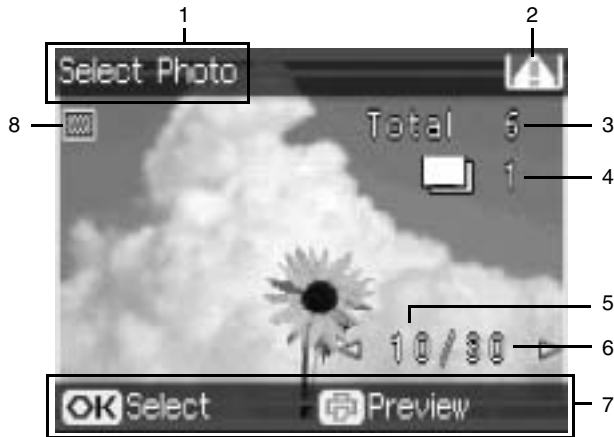
# Printer Parts and Functions

## Control Panel Functions



	Parts	Function
1	⏻ On button	Press to turn the printer on and off.
2	☰ Menu button	Press to enter the Menu mode for the print settings or maintenance options.
3	🗪 Display button	Press to change the view of the screen.
4	OK button	Functions as shown in the LCD screen.
5	◀▶ 2-way scroll button	Press to move the cursor on the LCD screen.
6	✕ Stop/Clear button	Press to cancel printing or to clear the number of copies and cancel selecting photos by date.
7	🖨️ Print button	Press to start printing.

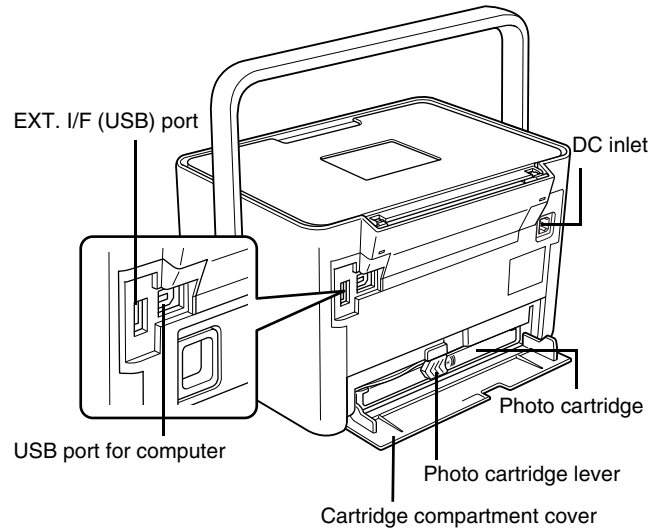
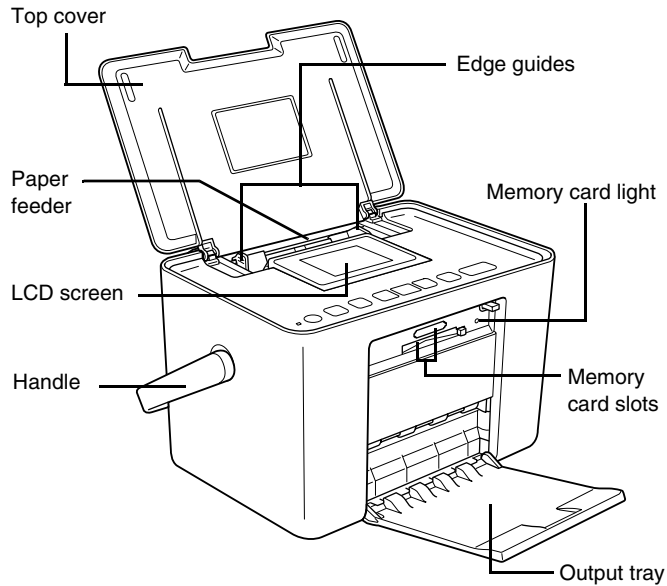
## Understanding the LCD Screen



1	The printing stage for this job.
2	Appears when ink is low.
3	The total number of photos you selected to print.
4	The number of copies for the selected photo.
5	The number for the current photo.
6	Total number of photos.
7	Guidance. The icons show the buttons to press.
8	Appears when you select Frame as the layout setting.

---

## Printer Parts



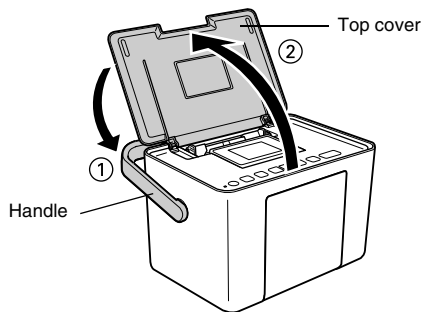
---

## Preparing to Print

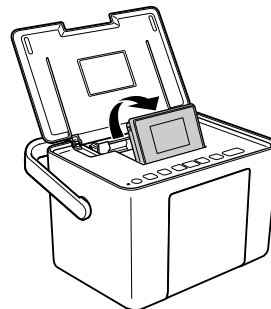
---

### Inserting a Memory Card

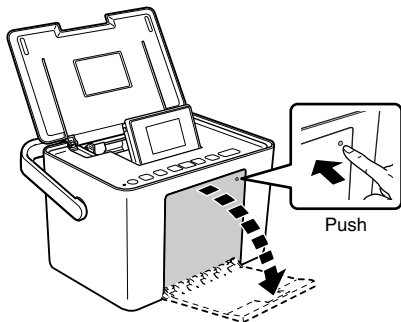
1. Move the handle to the back. Then open the top cover.




2. Raise and adjust the LCD screen so that you can see it well.



3. Open the output tray.

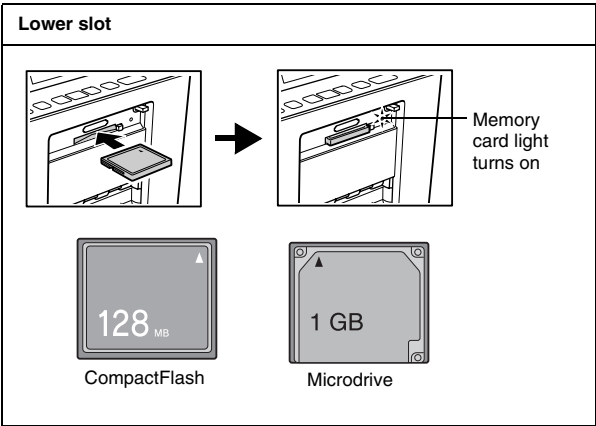
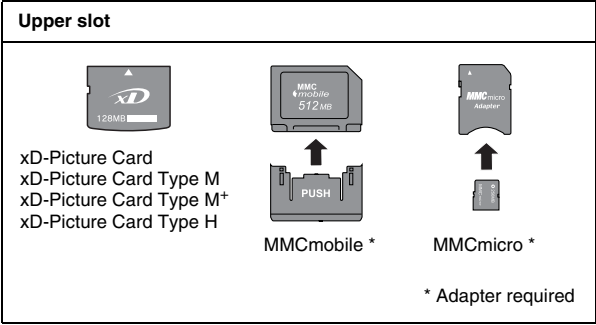
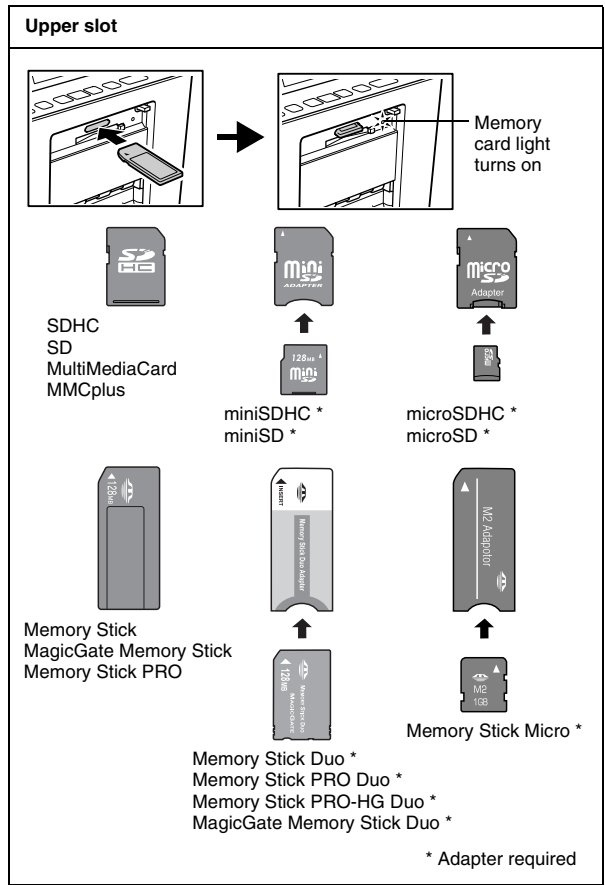


4. Press  On.
5. Make sure the memory card light is off and no cards are in both slots. Then insert a memory card into the correct slot, as shown in the illustration.



**Caution:**

- ❑ *Insert just one card at a time.*
- ❑ *Load your memory card only as shown in the following table or you may damage your printer, memory card, or both. If you insert a card incorrectly, you see an error message on the LCD screen. Remove the memory card and insert it correctly.*
- ❑ *Do not press the button on the right side of the lower card slot when you insert a CompactFlash card or you cannot remove the card.*
- ❑ *If the CompactFlash card is not recognized, remove the card and insert it again.*
- ❑ *Make sure you fit mini memory cards with their adapters before inserting them into the printer's memory card slots. If you do not use an adapter, the memory card and the printer may be damaged.*



- The memory card light flashes and then stays on. It takes a few seconds to recognize the memory card. Now you can choose photos and layouts for printing from the LCD screen. See “Basic Photo Printing” on page 18.

**Note:**

*When you see a message saying that the memory card contains 1000 photos or more, press OK and select the group containing the photos you want to print. See “Choosing a Group of Photos” on page 16”.*

For the latest information on memory cards available for your printer, contact your dealer or regional Epson sales office.

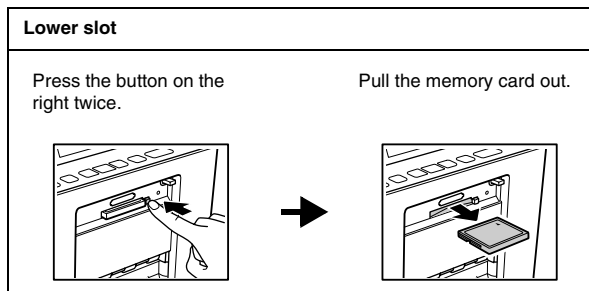
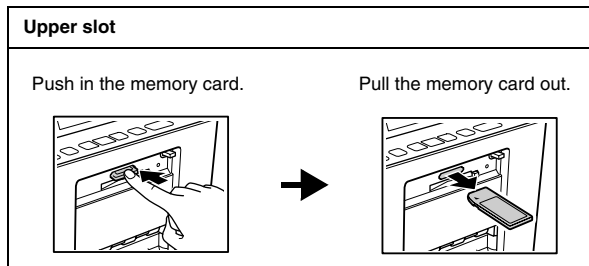
## Removing the memory card

When you are ready to remove a memory card, make sure the memory card light is not flashing, then remove the memory card from the slot.



**Caution:**

*Do not remove a card while the memory card light is flashing; you may lose photos on your card.*





---

## Loading Paper

When loading special paper distributed by Epson, read the instruction sheets packed with the paper first.

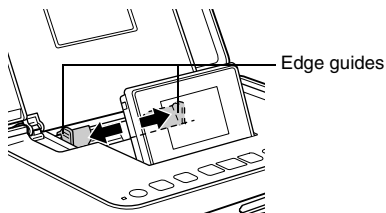
Follow these steps to load PictureMate Photo Paper:



**Caution:**

*Do not load plain paper; this may damage PictureMate.*

1. Make sure the edge guides are slid to the sides.

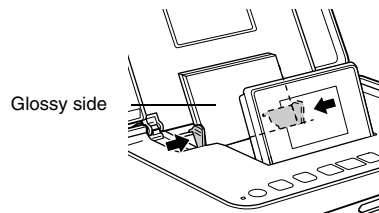


2. Place your paper in the center, with the glossy side up.

**Note:**

*Make sure paper is glossy side up to prevent smearing.*

3. Slide the edge guides against the paper. Make sure they are snug, but not so tight that paper cannot move.



**Note:**

- You can load up to a maximum of 20 sheets for photo papers, or 1 sheet for Photo Sticker.
- When you need more paper, order a PictureMate PicturePack. See "Photo Cartridge, Paper, and Options" on page 47 for more information.

---

## Paper Handling Instructions

### When storing printouts

- Do not touch the printed side or stack your printouts until the ink is dry.

- ❑ To avoid scratching the image, be sure not to rub the printed side of the paper. If the printed side is rubbed too strongly, ink may come off the paper.
- ❑ Do not stack printouts with the image sides touching.
- ❑ Do not stack printouts and conventional film photographs with the image sides touching.
- ❑ If you stack printouts, place a sheet of plain paper or other absorbent paper between the individual prints.

### ***When storing unused paper***

Return any unused paper to the original package, and store it away from extreme temperatures, high humidity, and bright lights.

### ***When displaying printouts***

- ❑ When displaying your printouts indoors, Epson recommends placing your printouts in glass frames to preserve the colors in your image.

- ❑ Avoid displaying your printouts outdoors or in a place exposed to direct sunlight to prevent fading.

**Note:**

*For best results, allow your prints to dry thoroughly for 24 hours before framing.*

---

## ***Choosing a Group of Photos***

If your memory card contains 1000 photos or more, PictureMate sorts them by file name and divides them into groups of 999 photos. Select the group from which you want to print photos.

**Note:**

*The last group may contain less than 999 photos.*

1. Load paper and a memory card.
2. When you see a message saying that the memory card contains 1000 photos or more, press **OK**.
3. Press **◀** or **▶** to select the group from which you want to print photos, and then press **OK**. Now you are ready to select and print photos. See “Basic Photo Printing” on page 18 to print your photos.

**Note:**


*You can switch which group of photos to load at any time by selecting Select Group from the Select Photos menu.*

---

## **Basic Photo Printing**





---

### **Changing the View of Photos on the LCD Screen**


You can change the view of photos displayed by pressing the  Display button.

---

### **Printing Selected Photos**

1. Press  or  to select the photo you want to print, and then press OK.
2. Press  or  to set the number of copies you want to, and then press OK.
3. Repeat steps 1 and 2 for additional photos.
4. If you want to make optional settings such as color effects, see “Editing Your Photo” on page 21.

5. Press  to preview the photo you want to print.

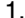
If you want to change the paper size or layout, press  Menu, and then select Basic Print Settings. Select the paper size and the layout you want to use from the Paper Size and the Layout settings.

For details, see “Making Paper and Print Layout Settings” on page 21.

6. Press .

---

### **Printing Groups of Photos**

1. Press  Menu.
2. Select Select Photos, and then press OK.
3. Select the menu you want to use to print, and then press OK.

Select All Photos	Select all of the photos on your card. When your card contains 1000 or more photos, this selects all of the photos in the group selected.
Select By Date	Select photos by the date they were taken.
Select Group	Select a group of photos when your card contains 1000 or more photos. ➔ See “Choosing a Group of Photos” on page 16. Note: This function is only available when the card contains 1000 or more photos.

4. Follow the on-screen instructions.

**Note:**


- ❑ *If you want to set the number of copies for specified photos only, select the photo you want to increase and press OK. Next, press ► and then press OK again.*
- ❑ *If there is DPOF information on the memory card, PictureMate enters DPOF print mode. See the next section. To print all of the photos on the memory card, select No, press OK, and then cancel DPOF information from your camera. Then follow the steps above.*

## Printing Camera-Selected DPOF Photos

If your camera supports DPOF (Digital Print Order Format), you can use it to preselect which photos and how many copies you want to print. See your camera's manual to choose photos for printing with DPOF, then insert your memory card in PictureMate. PictureMate automatically reads your preselected photos.

1. Load paper and a memory card that contains DPOF data. The screen below appears on the LCD screen.



2. Select Yes and then press OK to confirm the paper size and layout. Press .

**Note:**

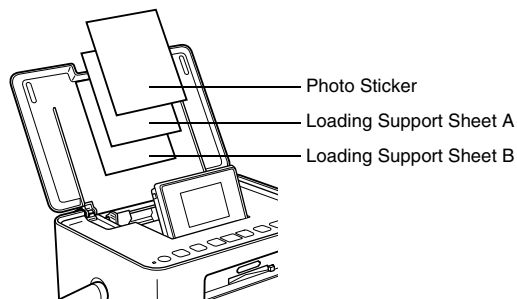
*If you want to print all of the photos on the memory card, select No, and then press OK to cancel DPOF information from your camera. After that, follow the steps in “Printing Groups of Photos” on page 18.*

---

## Printing on Photo Stickers

You can print 1, 4, 9, or 16 photos on the Epson Photo Sticker. See “Making Paper and Print Layout Settings” on page 21 for the print layout.



1. Load an Epson Photo Sticker sheet with Loading Support Sheets.

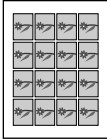




**Note:**

*Be sure to use the loading support sheets, and load one sheet at a time.*

2. Press  Menu.
3. Select Basic Print Settings, and then press OK.

4. Select Paper Size, and then press OK.
5. Select PhotoSticker, and then Press OK.
6. Press  or  to select the layout you want, and then press OK.
7. Select the photo you want to print, set the number of copies you want to and print them. See “Printing Selected Photos” on page 18.

Print layout when 4 photos, 9 photos, or 16 photos is selected (The images below show the case of 16 photos)	
When 1 photo is selected	
More than two photos or copies are selected	 






**Note:**

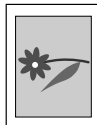
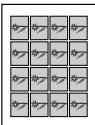
*To adjust the print position of pre-cut 16-up Photo Stickers, See “Setup” on page 30.*

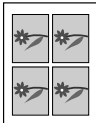
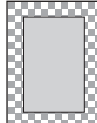
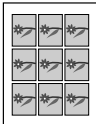
# Printing Options

## Making Paper and Print Layout Settings

You can select the print layout from the following options.

<b>10 × 15 cm 4 × 6"</b>			
	Borderless		8 Per Print
	Border		Frame
	2 Per Print		


<b>PhotoSticker</b>			
	1 Photo		16Pht. B/less 16 Photos

<b>PhotoSticker</b>			
	4 Photos		Frame
	9 Photos		

**Note:**

The Frame layout is displayed when your memory card contains frame data.

## Editing Your Photo

1. Press  Menu.
2. Select Basic Print Settings or Advanced Settings from the Setup menu, and then press OK.

3. Select the item you want to edit, and then follow the on-screen instructions.

## Basic Print Settings

Paper Size	You can choose 10 × 15 cm (4 × 6 in) or Photo Sticker.	
Layout	See “Making Paper and Print Layout Settings” on page 21.	
Fix Photos *	Enhance	Use this if a print does not look good; for example, this may correct images that are too dark, too bright, or backlit.
	P.I.M.	Process images according to the PRINT Image Matching information or Exif Print information in your digital files. This information helps to ensure an accurate image reproduction.
	Off	Prints photos as is or bypasses P.I.M. or Exif Print data (default setting for files with no P.I.M. or Exif Print data).
Scene Detection	Adjust the mode according to the scene of your photo. Select Standard, People, Landscape or Night Scene. This function is only available when you select Enhance as the Fix Photos option.	

Date Stamp	Print the date your photo was taken in the following format. (day, month, year: 26.Aug.2007) This function is only available when you select Border, Borderless, or 2 Per Print as the layout setting.
Color Effect	None / B & W / Sepia

### Note:

- All of the above function, these settings affect only your printed photos.*
- None of the above functions are cleared when you press the Stop/Clear button during printing.*
- \* If your camera supports PRINT Image Matching or Exif Print, you can use the printer's P.I.M. settings to automatically adjust your photos for the best result.  
If your camera does not support them, you can use Enhance to make adjustments for the type of environment in which your photos were taken.*



## Advanced Settings

Expansion	<p>Adjust the margins that are trimmed when you select Borderless.</p> <p>Standard: No margins are printed.</p> <p>Middle: The expansion rate is low. (The margins might be printed.)</p> <p>Minimum: The expansion rate is lower than Middle. (The margins might be printed.)</p>
Camera Text	<p>Select On to print text added from your digital camera.</p> <p>Note:</p> <ul style="list-style-type: none"><li><input type="checkbox"/> This function is only available for specific digital cameras that allow you to add text to photos. Check your camera's documentation.</li><li><input type="checkbox"/> Depending on the size of the characters, the maximum number of printable characters changes. For example, for large characters such as a string of upper case "W", the number of printable characters is 32 for 10 × 15 size.</li><li><input type="checkbox"/> You can print up to 20 lines of text depending on your digital camera.</li><li><input type="checkbox"/> This function is only available when you select Borderless as the layout setting.</li></ul>
Fix Red-Eye	<p>Select On to correct red-eyes in your photo (default: Off).</p> <p>Note: Depending on the type of photo, parts of the image other than the eyes may be corrected.</p>

### Note:

*None of the above functions are cleared when you press the Stop/Clear button during printing.*

---

## Printing From an External Device

PictureMate can print stored photos on a device such as a Bluetooth-enabled device or a digital camera.

---

### Printing From a PictBridge-Enabled Camera

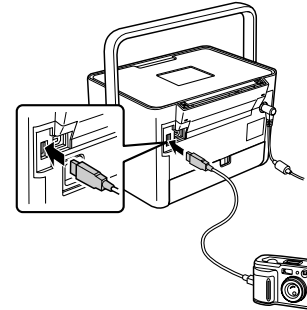
You can connect your PictBridge-enabled digital camera to the back of PictureMate and use the camera to control printing. (See your digital camera's documentation to see if it supports the PictBridge standard.)

1. Make sure PictureMate is on.
2. Make sure there are no memory cards in PictureMate's slots. The memory card light should be off.

**Note:**

*If a memory card is inserted, the printer will read photos from the card, not from a camera.*

3. Use the PictureMate's control panel to adjust the print settings. (For example Layout and Color Effect.)
4. Connect your camera's USB cable to your camera and the EXT. I/F port on the back of PictureMate.



5. Use the digital camera to select the photo you want to print. Be sure to make the desired print settings on the digital camera because the digital camera settings generally take precedence over the print settings of PictureMate. See your digital camera's documentation for information on more detailed settings.

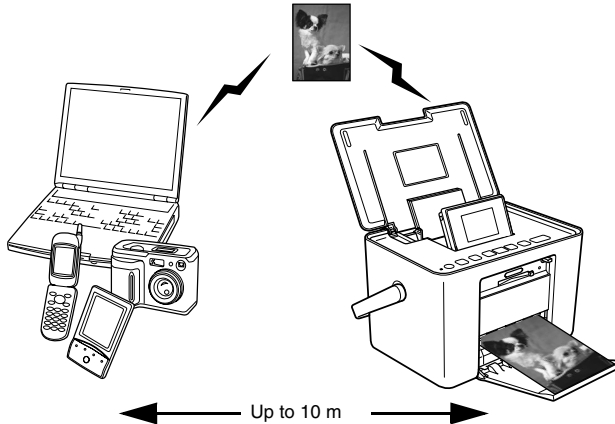
6. Print from the digital camera.

---

## Printing From a Bluetooth Device

### About the Bluetooth Photo Print Adapter

The optional Bluetooth Photo Print Adapter is a wireless communication module used to print from digital cameras and other devices with Bluetooth wireless technology without cables when connected to the printer.



#### Note:

- ❑ While this product complies with the Bluetooth Specification, it is not guaranteed to work with all devices enabled with Bluetooth wireless technology.
- ❑ The communication range of this product is approximately 10 meters; however, this may vary depending on conditions including obstacles between devices; signal quality; magnetic fields; static electricity and electromagnetic interference; software; operating system; reception sensitivity; antenna performance; and when sharing the same wireless frequencies with equipment such as microwave ovens or cordless telephones.

## Available profile

Basic Printing Profile (BPP)
Basic Imaging Profile (BIP) Printable file size is up to 2.5 MB. Up to 10 jobs can be queued (Maximum 3 MB).
Hardcopy Cable Replacement Profile (HCRP)
Object Push Profile (OPP)

## Connecting and disconnecting the Bluetooth Photo Print Adapter

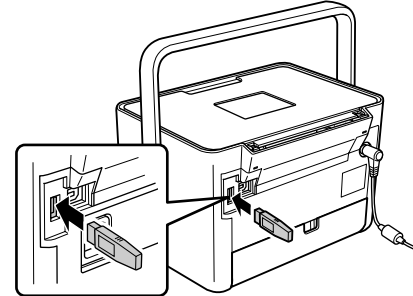
### Connecting

1. Insert the Adapter connector into the EXT. I/F port as shown below.



### Caution:

*Do not connect this product while the printer is operating. Doing so may cause the printer to malfunction.*

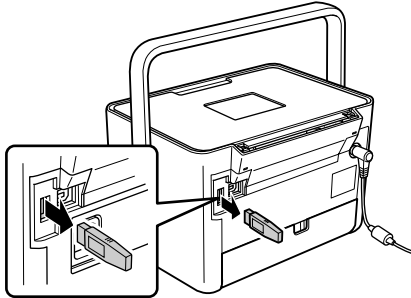


2. The Adapter's light comes on for one second. If the LED does not turn on, disconnect the Adapter from PictureMate, then reconnect it.

Next, make the settings for Bluetooth wireless communication. See "Bluetooth settings" on page 27.

## Disconnecting

Remove the Adapter's connector from the EXT. I/F port as shown below.



### **Caution:**

- ❑ *Do not remove this product while communicating with another device.*
  
- ❑ *Do not disconnect this product while the printer is operating. Doing so may cause the printer to malfunction.*
  
- ❑ *Do not remove this product by pulling on its upper section. Doing so may damage the product.*

## Bluetooth settings

Use the LCD screen on PictureMate to make settings for Bluetooth wireless communication.

➔ See “Making settings” on page 28


## Outline of settings

Setting	Choices	Description
Printer ID	printer name-(number) (Default = 1)	If multiple printers enabled with Bluetooth are in the same communication range, distinguish them by assigning each number from 0 through 9.  To make the Printer ID setting take effect, turn the printer off and then back on.

Mode	Discoverable	This mode allows devices enabled with Bluetooth to freely discover the printer and print.
	Not Discoverable	This mode prevents unknown devices from discovering the printer.  To print in this mode, first search for the printer once in Discoverable mode. After your device has discovered the printer in Discoverable mode once, it will subsequently be able to communicate with and print from it in this mode.
	Pairing	This mode requires that the four-digit Passkey be entered into a device before it can communicate with and print from the printer.
Encryption	On/Off (Default = Off)	Select On to encrypt communication. Encryption requires that the four-digit Passkey be entered into a device before it can communicate with and print from the printer.

Passkey	Any four-digit number (Default = 0000)	The Passkey setting allows you to set the four-digit Passkey that must be entered into a device before printing if Pairing is selected as the Mode or if Encryption is On.
Device Address	Set at the factory (Example) 11-11-11-11-11-11	Displays the unique Bluetooth Device Address of the printer.

### ***Making settings***

1. Press  Menu.
2. Select Setup, then press OK.
3. Select Bluetooth, then press OK.
4. Select Bluetooth Setup, then press OK. Set the Printer ID, Mode and Encryption. See “Outline of settings” on page 27 for information about Bluetooth settings except Passkey setting. See “The Bluetooth Passkey setting” on page 28 to set the Passkey.

### ***The Bluetooth Passkey setting***

After you set the Printer ID, Mode, and Encryption, you can set a passkey.

1. Press ◀ or ▶ to select a number for the digit, and then press OK.

**Note:**

*Press the Stop/Clear button to return to the digit on the left.*

2. Select numbers for the other digits in the same way, and then press OK.
3. At the confirmation screen, press OK to activate the Passkey.

## **Printing**

1. Make sure Bluetooth settings have been made. For details on making Bluetooth settings, see “Bluetooth settings” on page 27.
2. Use the PictureMate’s control panel to adjust the print settings. (For example Layout and Color Effect.)
3. Print the data from your Bluetooth enabled device.

**Note:**

- ❑ *The settings available may vary among Bluetooth wireless-capable devices. For more information, refer to your device’s documentation.*
- ❑ *Depending on the size of the data, it may take some time to start printing after the data is sent.*
- ❑ *You may not be able to print data 2.5 MB or larger.*
- ❑ *Supported image sizes are from 80 × 80 pixels to 9200 × 9200 pixels.*

For more information about printing from Bluetooth wireless-capable mobile phones, digital still cameras, digital video cameras, PDAs, mobile PCs and other Bluetooth wireless-capable device, refer to the documentation for both the device and the printer.

---

# PictureMate Preferences

---

## Making Settings

You can set the convenient functions and customize usual your printing. Refer to the following steps and table.

1. Press  $\equiv$  Menu.
2. Select Utility or Setup, and then press OK.
3. Follow the on-screen instructions.

## Utility

Slide Show	View all photos in sequence like a slide show.
Print Proof Sheet	Print all of the photos on your memory card. You can print a maximum of 20 thumbnails on one sheet. The photo number is printed at the lower left and the date is printed at the lower right of each photo. The paper size is automatically set to 10 × 15 cm (4 × 6 in). If you select photos using Select By Date or Select Group, only selected photos are printed.

Custom ID Print	Adjust the size of ID photos and then print. (➔ page 31)
-----------------	--

## Setup

Advanced Settings	Make advanced print settings. (➔ page 23)	
Display Settings	Print Preview	Turn this On to display the print preview screen so that you can confirm your image before printing.
	Screensaver	Turn this On to play a slideshow when no buttons are pressed for 3 minutes.  Note: This function is only available when the memory card contains two or more photos.
Sticker Position	Adjust the printing position for pre-cut 16-up Photo Stickers.  Note: The printer remembers the print adjustment setting even after it has been turned off, so you do not need to adjust the position each time.	






Language	Select the language to display.
Bluetooth	Make the Bluetooth settings. (➔ page 27)  Note: This function is only available when you connect the optional Bluetooth Photo Print Adapter.
Restore Default	Reset to the default settings.


---







## Customizing ID Photos and Printing

You can customize the size of ID photos and then print.


1. Press  Menu.
2. Select Utility, and then press OK.
3. Select Custom ID Print, and then press OK.
4. Check the message, select Yes, and then press OK.
5. Press  or  to set Height, and then press OK.

**Note:**

*If you want to change the units, press the  Display button and select mm or inch.*

6. Press  or  to set Width, and then press OK.
7. Press  or  to select the photo you want to print, and then press OK. A frame is displayed on the selected photo.
8. Move the frame using  or  to set the area you want to print.

**Note:**

*If you want to rotate the frame, press the  Display button.*

9. Press OK to preview the photo, and then press .

---

## Replacing the Photo Cartridge

---

### Checking the Photo Cartridge Status

When the photo cartridge is low on ink, you see this icon in the upper-right corner of the LCD screen.



You can check the photo cartridge status at any time.

1. Press  $\nu \equiv$  Menu.
2. Select Maintenance, and then press OK.
3. Select Cartridge Status, and then press OK.
4. A screen is displayed showing the photo cartridge status. Press OK to close the screen.

---

### Replacing the Photo Cartridge

When the photo cartridge needs replacement, you see a message on the LCD screen.



**Warning:**

*Keep photo cartridges out of the reach of children. Do not allow children to drink from or handle the cartridges.*

**Caution:**

- ❑ *Epson recommends the use of genuine Epson photo cartridges. Epson cannot guarantee the quality or reliability of non-genuine ink. The use of non-genuine ink may cause damage that is not covered by Epson's warranties, and under certain circumstances, may cause erratic printer behavior.*
  
- ❑ *Leave the old cartridge installed in the printer until you have obtained a replacement; otherwise, ink remaining in the print head nozzles may dry out.*
  
- ❑ *Do not refill photo cartridges. Other products not manufactured by Epson may cause damage that is not covered by Epson's warranties, and under certain circumstances, may cause erratic printer behavior.*

**Note:**

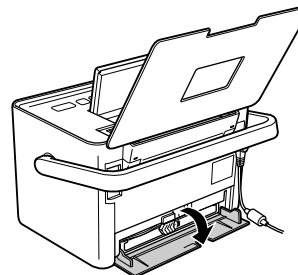
- ❑ *PictureMate uses photo cartridge equipped with an IC chip. The IC chip monitors the photo cartridge status.*

- ❑ *All of the ink colors are used during print head cleaning and during ink charging when a photo cartridge is installed.*
  
- ❑ *Do not turn off the printer during ink charging as this will waste ink.*

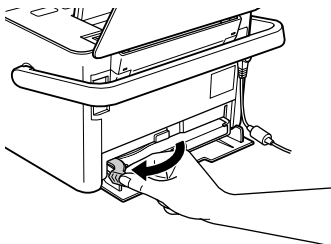
For more information about photo cartridges.

➔ See "When handling photo cartridges" on page 7

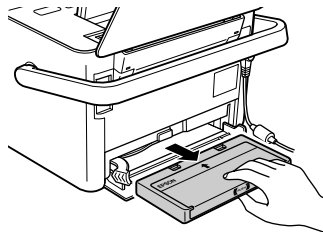
1. Make sure that PictureMate is on, but not printing.
2. Open the cartridge compartment cover on the back of PictureMate.



3. Set the cartridge lever in the Release position by pulling it to the left. The photo cartridge will be ejected about halfway out of the cartridge holder.



4. Pull the cartridge out of PictureMate and dispose of it properly.



**Note:**

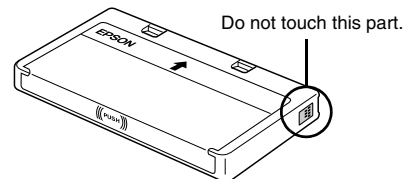
*Do not take the used cartridge apart or try to refill it. Do not shake the used photo cartridge; otherwise, it may leak.*

5. Remove the replacement photo cartridge from its package.



**Caution:**

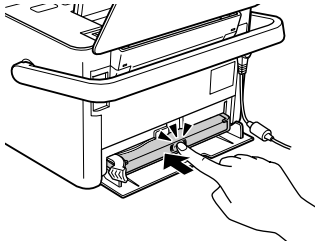
- ❑ *Do not touch the green IC chip on the side of the cartridge. This can damage the photo cartridge.*



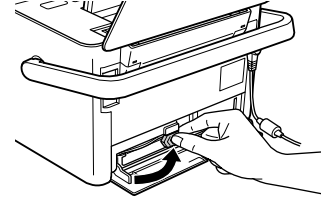
- ❑ *If you remove the photo cartridge for later use, be sure to protect the ink supply ports from dirt and dust; store it in the same environment as the printer. Note that there is a valve in the ink supply ports, making covers or plugs unnecessary, but care is needed to prevent the ink from staining items that the cartridge touches. Do not touch the ink supply ports or surrounding area.*

- ❑ *Be sure to always install a photo cartridge into the printer immediately following the removal of the current photo cartridge. If a photo cartridge is not installed promptly, the print head may dry out, rendering it unable to print.*

6. Place the cartridge properly into the cartridge holder, then push it in until you feel resistance and hear the cartridge faintly click into place.



7. Set the lever to the Lock position by sliding it to the right.



**Note:**

*Once the photo cartridge is installed, DO NOT release or adjust the photo cartridge lever. If you move the lever accidentally, remove the cartridge and reinstall it.*

8. Close the cartridge compartment cover.

**Note:**

*If you cannot close the cartridge compartment cover, the photo cartridge is not installed correctly. Go back to the step 3 and eject the photo cartridge. Then install the photo cartridge again.*

---

# Transporting PictureMate

---

## Packing

PictureMate's handle makes it easy to carry short distances. If your PictureMate is going to travel a longer distance, you should pack it carefully following the steps below to protect it from getting damaged.



**Caution:**

*Keep PictureMate out of the sun and don't leave it in your car or other location where it can get too hot.*



1. If PictureMate is on, turn it off.
2. Wait until the LCD screen goes blank, then unplug the power cord from the electrical outlet.
3. Remove paper from the paper feeder and output tray.

4. Close the LCD screen.
5. Close the top cover and output tray.
6. Disconnect the power cord and any connected USB cable from the back of PictureMate.
7. Pack the power cord, AC adapter, paper, spare photo cartridge, and this manual in the travel case.
8. Pack PictureMate and the travel case in the box that PictureMate came in.



**Caution:**

*Make sure the photo cartridge is installed before transporting. Do not place PictureMate on its side or upside down, or ink may leak.*

**Note:**

*If your prints do not look as good after PictureMate has been moved, try aligning the print head. See "Aligning the Print Head" on page 38.*

---

# Maintaining PictureMate



---

## Checking and Cleaning the Print Head Nozzles

If your print quality is not as good as it used to be, if your photos are light or faint, or you are missing colors in your prints, your print head nozzles may be clogged.

### Note:

- ❑ *Because print head cleaning uses all of the ink colors, clean the print head only if quality declines; for example, if the printout is blurry or the color is incorrect or missing.*
  - ❑ *Use the Nozzle Check function first to confirm that the print head needs to be cleaned. This saves ink.*
  - ❑ *If a message on the LCD screen tells you that the cartridge needs replacement or is low on ink, you cannot clean the print head. You must first replace the photo cartridge.*
1. Make sure that PictureMate is turned on and no warnings or errors are displayed on the LCD screen.

2. Load a sheet of photo paper. See “Loading Paper” on page 15.
3. Press  Menu.
4. Select Maintenance, and then press OK.
5. Select Nozzle Check, and then press OK.
6. Press  to print the nozzle check pattern.
7. Examine the nozzle check pattern you printed.

Below are sample printouts.

Okay




Needs Cleaning



The above sample may be shown in black and white, but the actual test prints in color (Black, Cyan, Magenta and Yellow).

8. If the nozzle check pattern is satisfactory (Okay), select Yes, and then press OK.

If the nozzle check page does not print satisfactorily (for example, if any segment of the printed lines is missing), your print head nozzle may be clogged. Go on to the next step.

9. Select No, press OK, and then press OK again. If a confirmation message is displayed, select Yes, and then press OK to clean the print head.
10. When cleaning finishes, press  to print another nozzle check pattern and check the pattern again.



**Note:**

*If you do not see any improvement after cleaning about two times, check the solutions beginning on page 42. You can also turn the printer off and wait for at least 6 hours - this allows any dried ink to soften-and then try cleaning the print head again. If print quality has still not improved, contact Epson support.*

---

## ***Aligning the Print Head***

If you have moved PictureMate and the print quality is not as good as it was before—for example, you see misaligned vertical lines or light or dark horizontal banding—you may need to align the print head.

1. Make sure that PictureMate is turned on and no warnings or errors are displayed on the LCD screen.
2. Load a sheet of photo paper. See “Loading Paper” on page 15.
3. Press  Menu.
4. Select Maintenance, and then press OK.
5. Select Head Alignment, and then press OK.
6. Press  to print the Head Alignment Pattern, and then follow the on-screen instructions.




---

## Cleaning PictureMate

### Cleaning the roller inside

To keep your printouts at their best, and when printing on Epson Ultra Glossy Photo Paper via computer, use the following procedure to clean the roller inside PictureMate.

1. Load several sheets of paper.
2. Press  Menu.
3. Select Maintenance, and then press OK.
4. Select Cleaning Sheet, and then press OK.
5. Follow the instructions on the LCD screen to repeat loading and ejecting the paper until the roller is clean.  
Then press Stop/Clear to exit.

### Cleaning the outer case

To keep PictureMate operating at its best, clean it thoroughly several times a year as follows.

1. Turn off PictureMate and unplug the power cord.
2. Remove any paper from the paper feeder.
3. Use a soft brush to carefully clean away all dust and dirt from the paper feeder.
4. If the outer case or the inside of the paper feeder is dirty, wipe it with a soft, clean cloth dampened with mild detergent. Keep the output tray closed to prevent water from getting inside.




#### **Caution:**

- Never use alcohol or thinner to clean the printer, as these chemicals can damage the components as well as the case.*
- Be careful not to get water on the printer mechanism or electronic components.*
- Do not use a hard or abrasive brush.*
- Do not spray the inside of the printer with lubricants. Unsuitable oils can damage the mechanism. Contact your dealer or a qualified service person if lubrication is needed.*

---

## Troubleshooting

The solutions herein are for problems when printing without using a computer.

If you cannot solve the problem, you can get more information from the LCD screen. Press  Menu, then select Help.

---

### Error/Warning Messages

You can diagnose and solve most problems by checking the error messages on the LCD screen. If you cannot solve the problems, by checking the messages, use the following table and try the recommended solution.



Error Messages	Solution
A printer error has occurred. See your printer documentation.	Turn PictureMate off and then back on. If the error message still appears, contact your dealer.  ➔ See "Contacting Customer Support" on page 45

Error Messages	Solution
Photo Cartridge low. Replace Photo Cartridge soon. T5852/T5846	Press OK to clear the error.  Prepare the new photo cartridge.  If you tried to clean the print head, replace the photo cartridge first.  ➔ See "Replacing the Photo Cartridge" on page 32
Replace photo cartridge now. For best results, use a genuine photo cartridge:T5852/T5846	Replace the photo cartridge with a new one.  ➔ See "Replacing the Photo Cartridge" on page 32
The printer's ink pads are nearing the end of their service life. Please contact Epson support.	Contact Epson support to replace ink pads before the end of their service life. When the ink pads are saturated, the printer stops and Epson support is required to continue printing.  ➔ See "Contacting Customer Support" on page 45
The printer's ink pads are at the end of their service life. Please contact Epson support.	Contact Epson support to replace ink pads.  ➔ See "Contacting Customer Support" on page 45

Error Messages	Solution
The printer's ink tubes are nearing the end of their service life. Please contact Epson support.	Contact Epson support to replace ink tubes before the end of their service life. When the ink tubes reach the end of their service life, the printer stops and Epson support is required to continue printing. ➔ See "Contacting Customer Support" on page 45
The printer's ink tubes are at the end of their service life. Please contact Epson support.	Contact Epson support to replace ink tubes. ➔ See "Contacting Customer Support" on page 45
Error in data. Printouts may be affected.	The print results may not be perfect. Check the data.
The image is too large. Operation canceled.	Press OK to clear the error. Check the data.
The image is too complex to print with Bluetooth.	
Error in data. Cannot print.	
Cannot recognize the memory card. See your printer documentation.	Make sure the memory card has been inserted correctly. If so, check to see if there is a problem with the card and try again.
Cannot recognize the device. See your printer documentation.	An unsupported device is connected to the EXT. I/F port. Remove the external device.

## Printer Power Problems

### LCD screen is off.

- ❑ If the screensaver setting is set to off and no buttons are pressed for 13 minutes, the LCD screen turns off. Press any button (except  On) to return the screen to its previous state.
- ❑ Press  On to make sure that PictureMate is on.
- ❑ Turn off PictureMate and make sure that the power cord is securely plugged in.
- ❑ Make sure that your outlet works and is not controlled by a wall switch or timer.

### LCD screen came on and then went out.

The PictureMate's voltage may not match the outlet rating. Turn off PictureMate and unplug it immediately. Then, check the printer labels.



#### **Caution:**

*If the voltage does not match, DO NOT PLUG YOUR PRINTER BACK IN. Contact your dealer.*

---

## ***Print and Noise Problems***

### **PictureMate makes an unexpected noise after you install a photo cartridge.**

The first time you install the photo cartridge, PictureMate will charge its print head for about three and a half minutes. Wait until charging finishes before you turn it off, or it may charge improperly and use more ink the next time you turn it on.

### **The memory card is not recognized.**

- ❑ It may take some time to recognize the memory card. Wait until the memory card light stays on with the memory card inserted into the slot.
- ❑ Make sure the memory card has been inserted correctly. See “Inserting a Memory Card” on page 11.

### **The memory card does not work correctly.**

- ❑ Make sure you are using a compatible memory card. See “Memory card” on page 49.

- ❑ Make sure only one card is inserted at a time. PictureMate does not read from multiple cards at once.
- ❑ Photos must be in JPEG format and taken with a DCF-compliant camera.

---

## ***Photo Quality Problems***

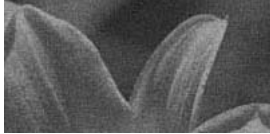
### **You see banding (light lines) in your prints.**



- ❑ The print head nozzles may need cleaning; see “Checking and Cleaning the Print Head Nozzles” on page 37.
- ❑ Make sure the glossy side of the paper is face up.
- ❑ Use up photo cartridge within six months after opening its package. To replace the cartridge, see “Replacing the Photo Cartridge” on page 32.

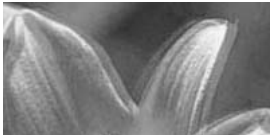
- ❑ The print head may need aligning; see “Aligning the Print Head” on page 38.

**Your printout is blurry or smeared.**



- ❑ Use only paper recommended by Epson to ensure proper saturation, ink absorption, and quality. See “Photo Cartridge and Paper” on page 47.
- ❑ Make sure you load paper with the glossy side face up.
- ❑ Make sure your paper is not damp or curled, or loaded face down (the glossy side should be face up). If it is damp or curled, load a new stack of paper.

**Your printout is faint or has gaps in the image.**



- ❑ The print head may need aligning; see “Aligning the Print Head” on page 38.
- ❑ The print head nozzles may need cleaning; see “Checking and Cleaning the Print Head Nozzles” on page 37 for instructions.
- ❑ The photo cartridge may be old or low on ink. To replace the photo cartridge, see “Replacing the Photo Cartridge” on page 32.
- ❑ Make sure your paper is not damaged, old, dirty, or loaded face down. If it is, reload a new stack of paper with the glossy side up.

### **Colors in your photo are wrong or missing.**

- ❑ Make sure the Color Effect setting is set to None for color photos.
- ❑ The print head nozzles may need cleaning; see “Checking and Cleaning the Print Head Nozzles” on page 37.
- ❑ The photo cartridge may be old or low on ink. To replace the cartridge, see “Replacing the Photo Cartridge” on page 32.

---

## ***Problems With Paper Feeding***

### **Paper does not feed correctly or jams in the printer.**

- ❑ Make sure the top cover is open, and is not leaning on the handle. The handle should be back of PictureMate. Make sure the handle is not resting on the paper. See “Preparing to Print” on page 11.
- ❑ If paper does not feed, remove it from paper feeder, reload it in the center, then slide both edge guides against the paper (but not too tightly).
- ❑ If multiple pages feed at once, remove the paper from the paper feeder, separate the sheets, and carefully reload it.
- ❑ If paper jams, remove the paper, then press OK to clear the jam.
- ❑ Load paper glossy side up. Load up to a maximum of 20 sheets for photo papers, or 1 sheet for Photo Sticker. Place the paper in the center and slide both edge guides against it, but not so tight that paper cannot move.
- ❑ Do not load plain paper; this may damage PictureMate.
- ❑ Make sure you are using available paper for PictureMate (see “Photo Cartridge and Paper” on page 47). Store paper flat to help prevent curling.

---

## **Miscellaneous Printout Problems**

### **The printer prints blank pages.**

Check if your memory card contains unsupported files. These are displayed as a "?" mark on the Select Photos screen. If you use the Select All Photos function and select multiple page layouts using these files, blank sections are printed.

### **The borders or layout are incorrect.**

- ❑ Check your Layout setting to see if it is correct. See "Making Paper and Print Layout Settings" on page 21.
- ❑ If you have a border on one side of your photo but not the other, make sure the paper is placed in the center of the paper feeder. Slide the edge guides against the paper.
- ❑ If the subject of your photo is very close to the edge of the image, you can change the amount of cropping around the edge of the image for Borderless printing by using Expansion from the Advanced Settings menu. If you see a white line around the edge of the print, select Standard.

### **The wrong photo is printed.**

- ❑ If your camera supports DPOF, you can preselect photos so PictureMate will print only the ones you want. See "Printing Camera-Selected DPOF Photos" on page 19.
- ❑ If your camera is PictBridge-enabled, you can connect it to PictureMate and control printing from your camera. See "Printing From a PictBridge-Enabled Camera" on page 24.

---

## **Contacting Customer Support**

If you cannot solve the problem using the troubleshooting information, contact customer support services for assistance. You can get the contact information for customer support for your area in your online User's Guide or warranty card. If it is not listed there, contact the dealer where you purchased your product.

Customer support will be able to help you much more quickly if you give them the following information:

- Product serial number  
(The serial number label is on the bottom of the product.)
- Product model
- Product software version  
(Click About, Version Info, or similar button in the product software.)
- Brand and model of your computer
- Your computer operating system name and version
- Names and versions of the software applications you normally use with your product



---

# Photo Cartridge, Paper, and Options

---

## Photo Cartridge and Paper

The following photo cartridges and Epson special paper are available for PictureMate. This information is only for standalone operation.

PictureMate PicturePack T5852 (PictureMate Photo Cartridge and 150 sheets of PictureMate Photo Paper)
PictureMate PicturePack T5846 (PictureMate Photo Cartridge and 300 sheets of PictureMate Photo Paper)
Epson Photo Stickers 100 × 148 mm
Epson Photo Stickers 16 100 × 148 mm

**Note:**

- For update information, check the Epson support site.
- The availability of photo cartridges and special paper varies by location.
- A6 size pre-cut 4-up and 16-up Epson Photo Stickers are not available.

- You can find the part numbers for the above Epson special paper on the Epson Web site.  
➔ See “Contacting Customer Support” on page 45
- If you want to use paper other than the types listed above, refer to the online User's Guide manual.

---

## Options

### Bluetooth Photo Print Adapter 2 C12C82438\*

For details on using the Bluetooth Photo Print Adapter, see “Printing From a Bluetooth Device” on page 25.

**Note:**

The asterisk is a substitute for the last digit of the product number, which varies by location.

---

# Printer Specifications

## Mechanical

<b>Dimensions</b>	Storage Width: 231 mm (9.1 inches) Depth: 169 mm (6.7 inches) Height: 149 mm (5.9 inches)
	Printing Width: 231 mm (9.1 inches) Depth: 344 mm (13.5 inches) Height: 265 mm (10.4 inches)
<b>Printable area</b>	Border printing: 3 mm margin for all sides of photo paper, and 17 mm margin on the bottom and 3 mm margin on the other sides for Photo Sticker  Borderless printing: 0 mm margin
<b>Paper tray capacity</b>	Photo paper: 20 sheets
	Photo Sticker: 1 sheet
<b>Weight</b>	Approx. 2.2 kg (4.9 lb) without AC adapter and photo cartridge

## Electrical

### Rating

#### Printer

	AC adapter operated
Input	DC 42 V, 0.4 A

#### AC Adapter

Model	A431H
Input	AC 100-240 V, 50-60 Hz, 0.7 A, 29 W
Output	DC 42 V, 0.6 A

## Printer Operated by AC Adapter

Input Voltage range		AC 100-120 V	AC 220-240 V
Power consumption using AC adapter	Continuous printing	Approx. 11.5 W	Approx. 11.5 W
	Sleep mode	Approx. 2.5 W	Approx. 3.0 W
	Power off	Approx. 0.2 W	Approx. 0.3 W
Input current using AC adapter (Continuous printing)		0.3 A	0.2 A

## Environmental

<b>Temperature</b>	Operation: 10 to 35 °C (50 to 95 °F)  Storage: -20 to 40 °C (-4 to 104 °F)  1 month at 40 °C (104 °F)
<b>Humidity</b>	Operation:* 20 to 80% RH

\* Without condensation

## Memory card

Compatible memory cards	
CompactFlash	miniSDHC**
Microdrive	miniSD**
Memory Stick*	microSDHC**
Memory Stick PRO	microSD**
Memory Stick Duo**	MultiMediaCard
Memory Stick PRO Duo**	MMCplus
Memory Stick PRO-HG Duo**	MMCmobile**
Memory Stick Micro**	MMCmicro**
MagicGate Memory Stick*	xD-Picture Card
MagicGate Memory Stick Duo**	xD-Picture Card Type M
SDHC	xD-Picture Card Type M+
SD	xD-Picture Card Type H
Media format DCF	
DCF (Design rule for Camera File system) version 1.0 or 2.0 compliant	
All card types standard version compliant	
Voltage Requirements	
3.3 V	
3.3 V/5 V Combined use	
Maximum current is 500 mA	

\* Maximum capacity is 128 MB.

\*\* Adapter required.

**Note:**

For the latest information on memory cards available for your printer, contact your dealer or regional Epson sales office.

**Photo data**

<b>File format</b>	JPEG with Exif Version 2.21 standard
<b>Image size</b>	80 × 80 to 9200 × 9200 pixels
<b>Number of files</b>	Up to 9990

**Photo Cartridge**

## PictureMate Photo Cartridge

<b>Color</b>	Black, Cyan, Magenta and Yellow
<b>Cartridge life</b>	Use within 6 months of opening the package.
<b>Temperature</b>	Storage: -30 to 40 °C (-22 to 104 °F) 1 month at 40 °C (104 °F) Freezing:* -15 °C (5 °F)

\* Ink thaws and is usable after approximately 3 hours at 25 °C (77 °F).

**Caution:**

- ❑ *Epson recommends the use of genuine Epson PictureMate photo cartridge. Other products not manufactured by Epson may cause damage that is not covered by Epson's warranties, and under certain circumstances, may cause erratic printer behavior.*
- ❑ *Use the photo cartridge before the date printed on the cartridge carton.*

**Note:**

- ❑ *The photo cartridge packaged with your printer is partly used during initial setup. In order to produce high quality printouts, the print head in your printer will be fully charged with ink. This one-off process consumes a quantity of ink and therefore this cartridge prints fewer pages compared to subsequent photo cartridges.*
- ❑ *Quoted yields may vary depending on the images that you are printing, the paper type that you are using, the frequency of your prints and environmental conditions such as temperature.*
- ❑ *To ensure you receive premium print quality and to help protect your print head, a variable ink safety reserve remains in the cartridge when your printer indicates to replace the cartridge. The yields quoted for you do not include this reserve.*

- ❑ *Although the photo cartridges may contain recycled materials, this does not effect product function or performance.*

## **Interface**

USB 2.0 Hi-Speed (for PictBridge compliant devices)
Bluetooth Ver.2.0 + EDR compliant (Option)

## **Standards and Approvals**

### **Printer**

U.S. model:

<b>EMC</b>	FCC Part 15 Subpart B Class B CAN/CSA-CEI/IEC CISPR 22 Class B
------------	---

Australian model:

<b>EMC</b>	AS/NZS CISPR22 Class B
------------	------------------------

### **AC Adapter**

U.S. model:

<b>Safety</b>	UL60950-1 CAN/CSA-C22.2 No.60950-1
<b>EMC</b>	FCC Part15 Subpart B Class B CAN/CSA-CEI/IEC CISPR22 Class B

Australian model:

<b>Safety</b>	AS/NZS 60950.1
<b>EMC</b>	AS/NZS CISPR22 Class B

## ☰ Summary of Panel Settings

### Select Photos

Select All Photos	Select Group
Select By Date	

### Basic Print Settings

Paper Size	10 × 15 cm 4 × 6"	
	PhotoSticker	
Layout	Borderless	4 Photos
	Border	9 Photos
	2 Per Print	16Pht. B/less
	8 Per Print	16 Photos
	1 Photo	Frame
Fix Photos	Enhance	
	P.I.M.	
	Off	

Scene Detection	Standard
	People
	Landscape
	Night Scene
Date Stamp	On / Off
Color Effect	None / B & W / Sepia

### Help

<b>Improve Print Quality</b>	Lines in printout
	Color is wrong
	Printout is blurred
	The ink runs
<b>Quick Guide</b>	Insert memory card
	Eject memory card
	Load paper
	Change Cartridge
	Wrong card inserted

## Maintenance

Nozzle Check	Cartridge Status
Auto Cleaning	Cleaning Sheet
Head Alignment	

## Utility

Slide Show
Print Proof Sheet
Custom ID Print

## Setup

Advanced Settings	Expansion	Standard / Middle / Minimum
	Camera Text	On / Off
	Fix Red-Eye	On / Off
Display Settings	Print Preview	On / Off
	Screensaver	On / Off
Sticker Position		
Language		

Bluetooth	Bluetooth Setup	Printer ID
		Mode
		Encryption
	Passkey	
	Device Address	
Restore Default		

### **Note:**

*Some of the items may be grayed out depending on operations and settings.*

---

# Index

## **B**

Basic Printing, 18  
Blank pages, 45  
Bluetooth, 25  
Blurry prints, 43  
Button, 8

## **C**

Camera  
    printing from, 24  
    selected photos (DPOF), 19  
Camera Text, 23  
Care of PictureMate, 37  
Carrying PictureMate, 36  
Cell phone  
    printing from, 25  
Cleaning  
    printer, 39  
    print head, 37  
Clogged nozzles, 37  
Color  
    problems, 44  
Consumables, 47  
Control panel, 8  
Customer support, 45

## **D**

Date Printing, 19  
Date Stamp, 22  
Device  
    external, 24 to 25  
DPOF (Digital Print Order Format), 19

## **E**

Edge guide, 15  
Edit, 22, 23  
Error Messages, 40  
Expansion, 23

## **F**

Faint images, 43  
Fix Photos, 22  
Fix Red-Eye, 23

## **G**

Gaps in image, 43

## **I**

Image  
    quality, 42 to 44

Incorrect colors, 44  
Ink, 47

## **J**

Jams  
    paper, 44

## **L**

Language, 31  
Layout, 21  
LCD screen, 9  
    messages, 40  
Loading Paper, 15

## **M**

Maintenance, 37  
Margins  
    incorrect, 45  
Memory card, 13  
    compatibility, 49  
    inserting, 11  
    problems, 42  
    removing, 14  
Missing colors, 44



## **N**

Nozzle check, 37  
Nozzle cleaning, 37

## **O**

Options, 47

## **P**

Packing PictureMate, 36  
Panel, 8  
Paper  
    buying types, 47  
    feeding problems, 44  
    handling, 15  
    jam, 44  
    loading, 15  
PDA  
    printing from, 25  
Photo  
    quality, 42 to 44  
Photo Cartridge  
    buying, 47  
    replacing, 32 to 35  
    safety instructions, 7  
PictBridge, 24  
PictureMate PicturePack, 47  
Power cable, 36  
Problems  
    memory card, 42  
    missing colors, 44  
    paper feeding, 44

paper jam, 44  
print quality, 42 to 44

## **Q**

Quality, 42 to 44

## **R**

Removing  
    memory card, 14  
    photo cartridge, 32

## **S**

Scene Detection, 22  
Setup problems, 42  
Smears, 43  
Spec, 48

## **T**

Technical support, 45  
Transporting PictureMate, 36  
Troubleshooting, 40 to 45

## **U**

USB cable, 24



MEMORY STICK PRO™



\*411708500\*

Copyright© 2009 Seiko Epson Corporation. All rights reserved.  
Printed in XXXXXX