



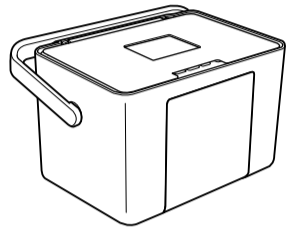
Start Here



PictureMate™ **PM 215**

1. Unpacking

Contents may vary by location.



Travel Case



Start Here



User's Guide

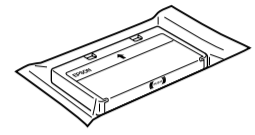
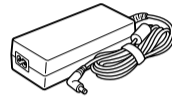
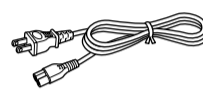


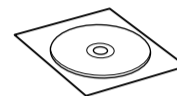
Photo Cartridge



AC Adapter



Power Cord



CD-ROM

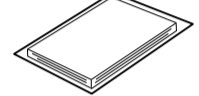
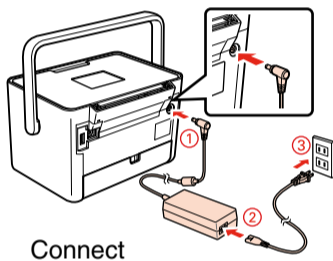
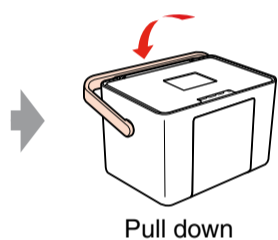


Photo Paper

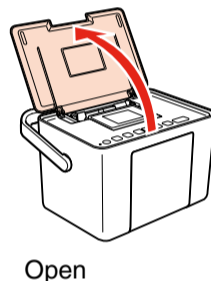
2. Turning On the Printer



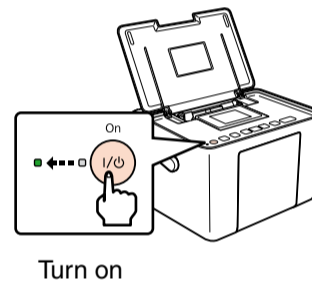
Connect



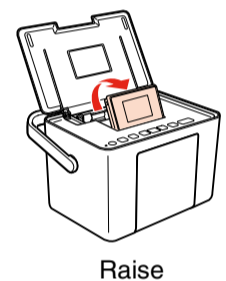
Pull down



Open

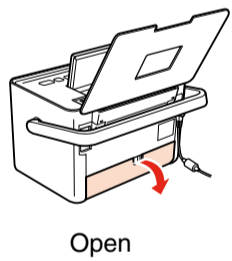


Turn on

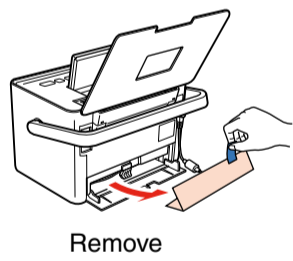


Raise

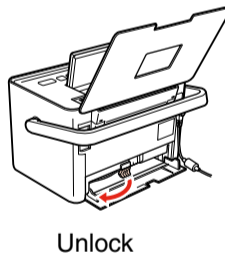
3. Installing the Photo Cartridge



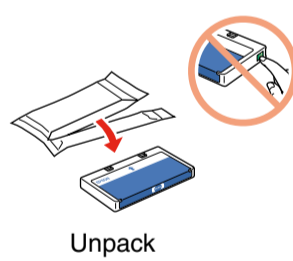
Open



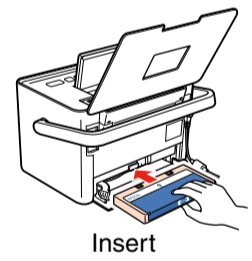
Remove



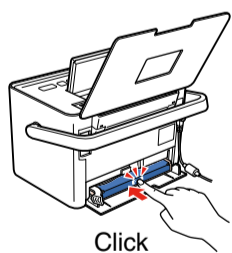
Unlock



Unpack



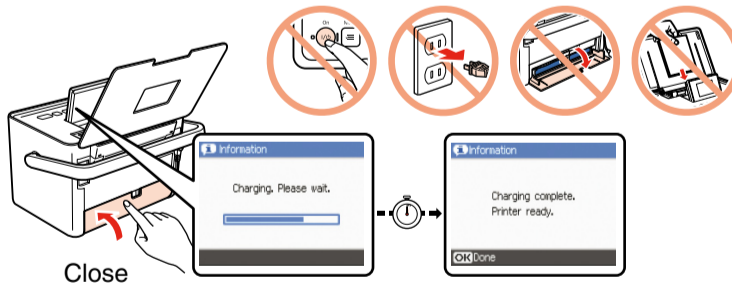
Insert



Click

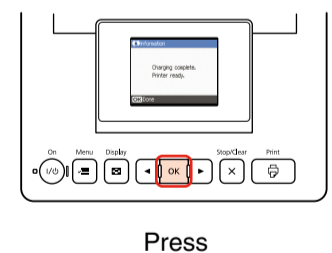


Lock



Close

About 3.5 min.



Press

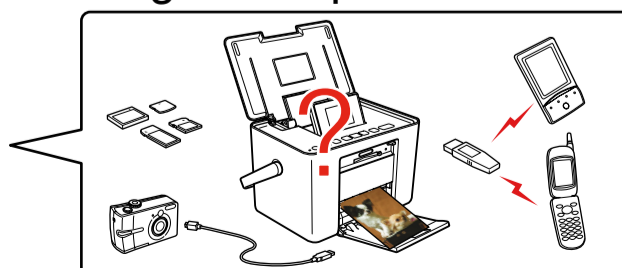
Note:

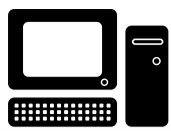
The photo cartridge first installed in your printer will be partly used to charge the print head. This cartridge prints fewer pages compared to subsequent photo cartridges.

4. Getting More Information Without Using a Computer



User's Guide

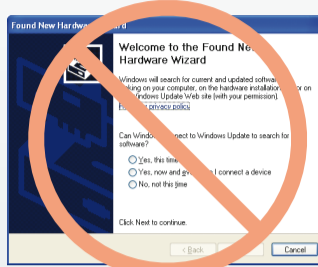
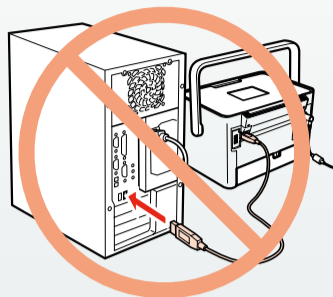




For Computer Users

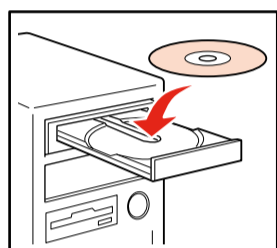
Installing the software

Do not connect the USB cable until you are instructed to do so.



If this screen appears, click **Cancel**.

For Windows Vista, XP, 2000, and Mac OS X



Insert

For Windows

For Mac OS X



Double-click

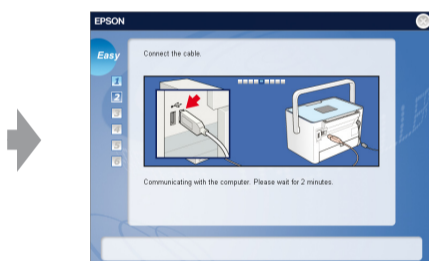


Click

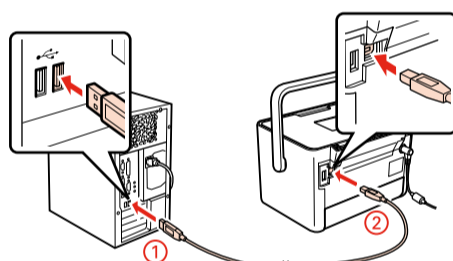
Follow the instructions

For Windows. No installation screen?

➔ Double-click the CD-ROM icon

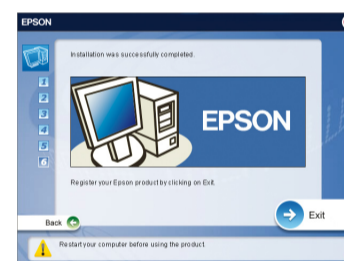


When this screen appears, connect to your PC.



Connect

Follow the instructions

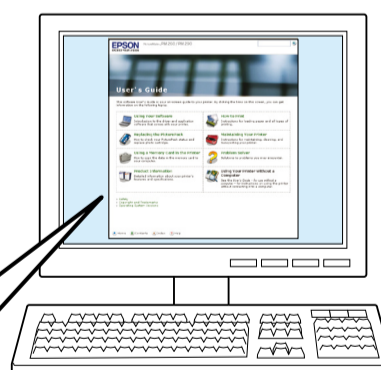
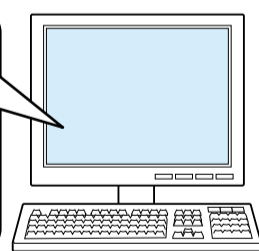


Installation complete.

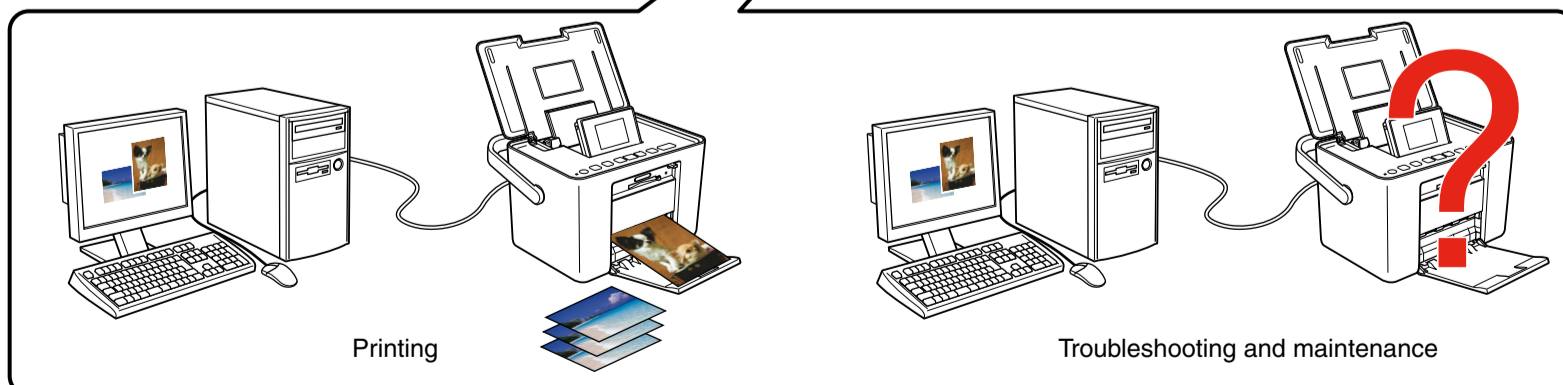
For information on using the printer with a computer, see the online User's Guide.



Double-click



User's Guide



Printing

Troubleshooting and maintenance