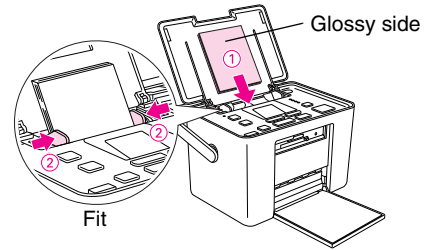
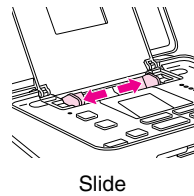
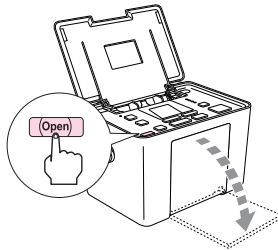
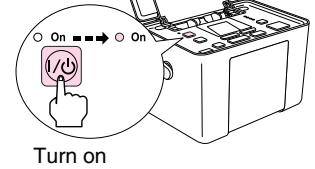
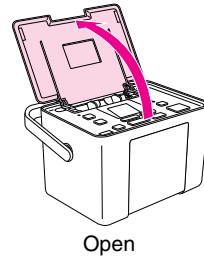
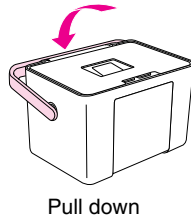
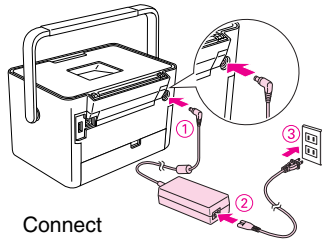


# Portable Quick Guide





## Turning On the Printer and Loading Paper



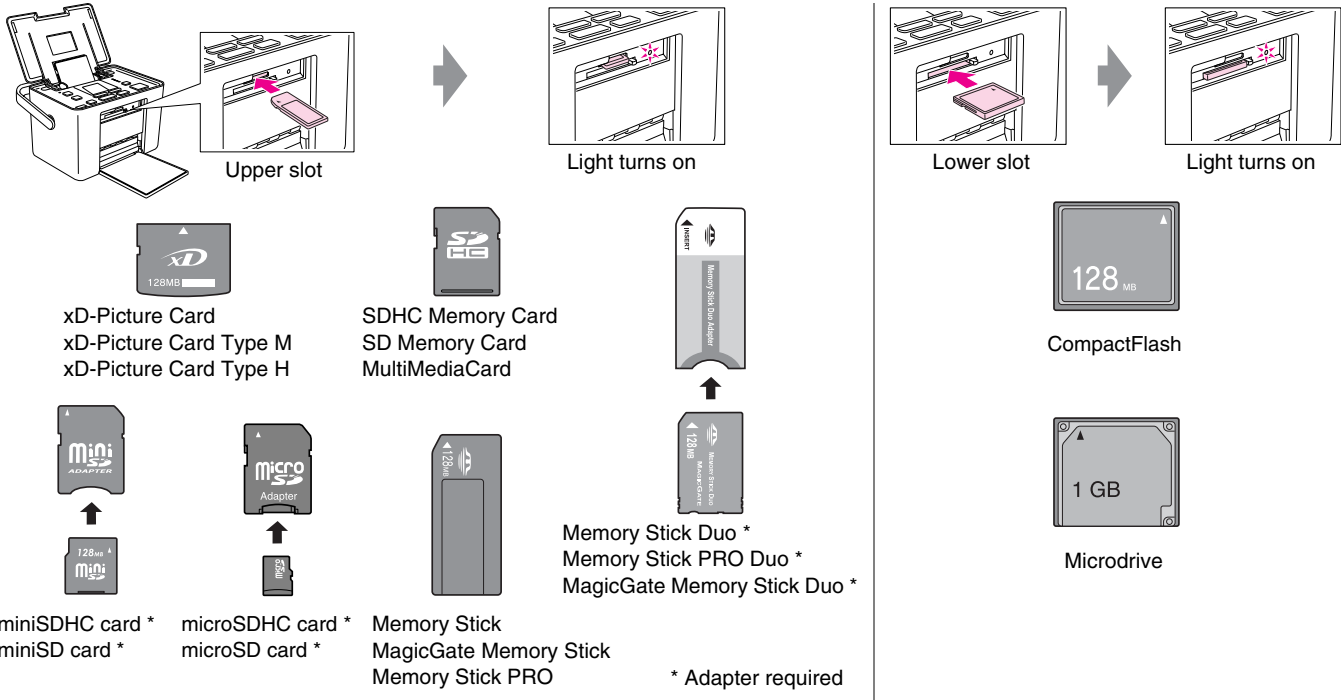


# Inserting a Memory Card



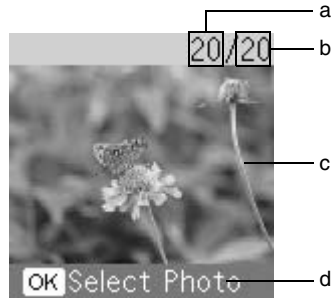
## Caution:

Do not remove a card while the memory card light is flashing; you may lose photos on your card.





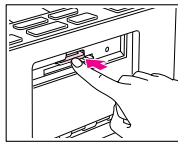
## When a memory card is inserted, the latest photo on the memory card will be displayed



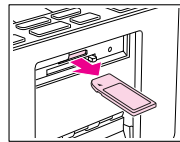
<b>a</b>	The number of the photo in order of the date taken. The oldest photo is numbered 1.
<b>b</b>	The total number of photos on the inserted memory card.
<b>c</b>	The photo corresponding to "a".
<b>d</b>	Guidance for making settings and printing. Icons show the buttons to press.

### Removing the Memory Card

Upper slot

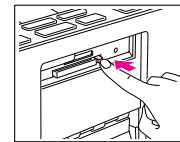


Push the card in

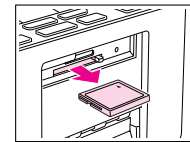


Pull out

Lower slot



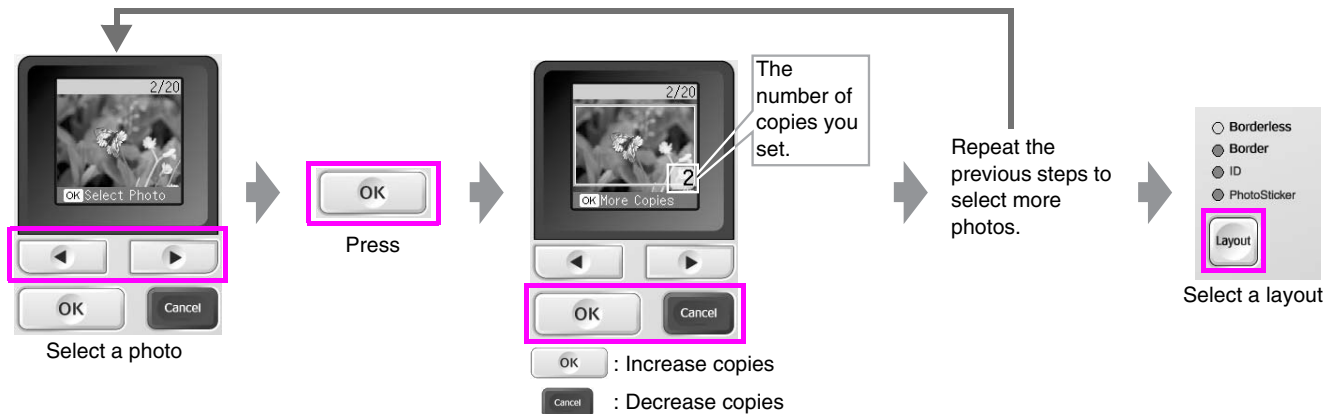
Press the button twice



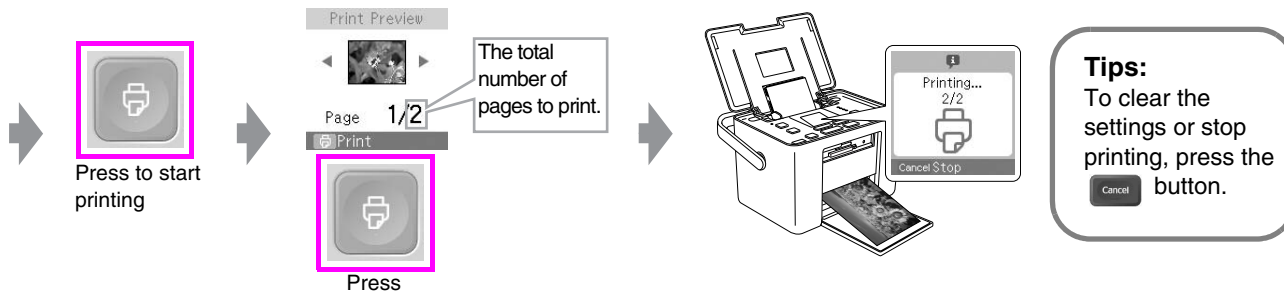
Pull out



## Selecting and Printing Some Photos



Confirmation window may appear.





## Printing All Photos



Press



Set the number of copies



Select a layout




Press to start printing

Confirmation window may appear.



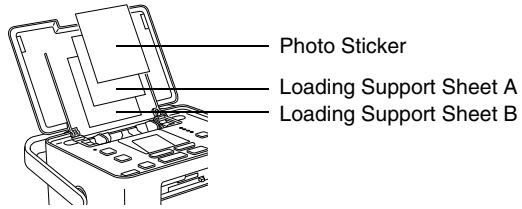
Press



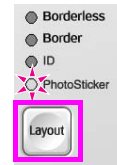
**Tips:**  
To clear the settings or stop printing, press the  button.



## Printing on Photo Stickers



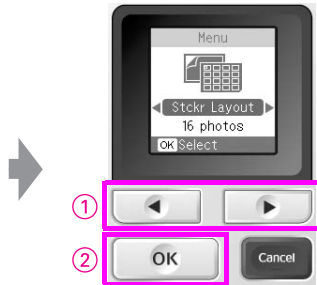
Load one sticker sheet with support sheets



Select PhotoSticker




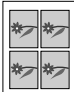


Press



Select Stckr Layout



Select Stckr Layout

Print layout	
1 photo 	4 photos 
9 photos 	16 photos 

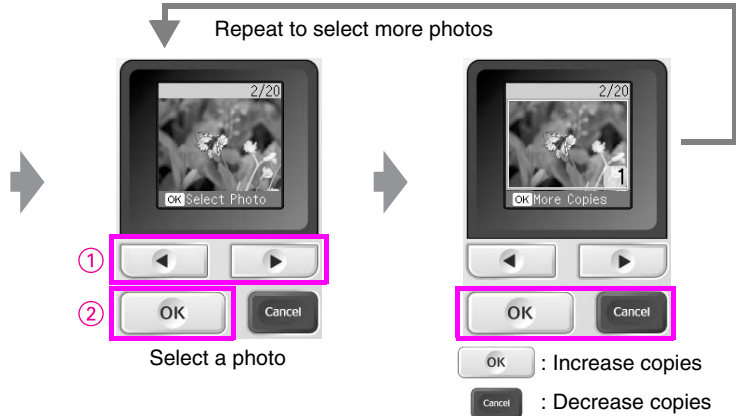


Continue to the next page





## Continued from the previous page



Print layout when 4 photos, 9 photos, or 16 photos is selected  
(The images below show the case of 16 photos)

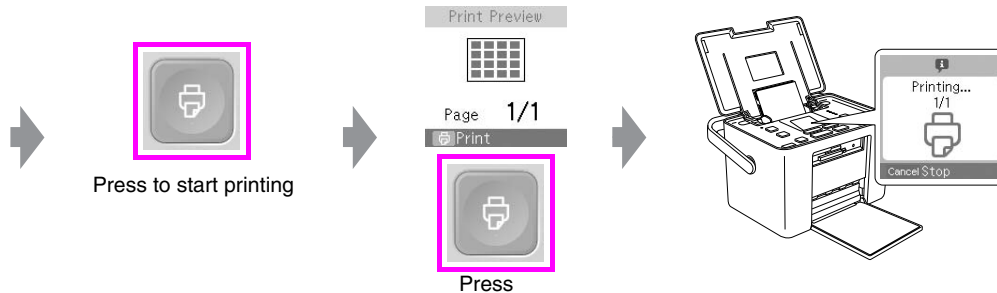
When 1 photo is selected




More than two photos or copies are selected



Confirmation window may appear.



### Tips:

To clear the settings or stop printing, press the  button.



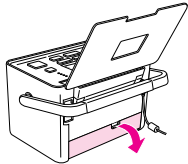
## Replacing the Photo Cartridge



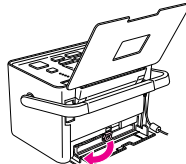
When ink is low, prepare the new PicturePack.



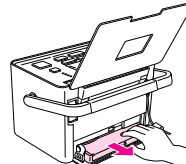
If this message appears to prompt you to replace the photo cartridge, follow the steps below.



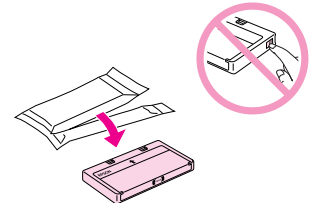
Open



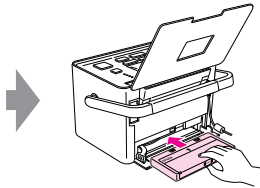
Unlock



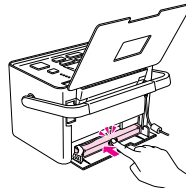
Remove



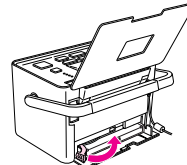
Unpack



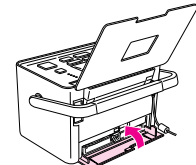
Insert



Click



Lock

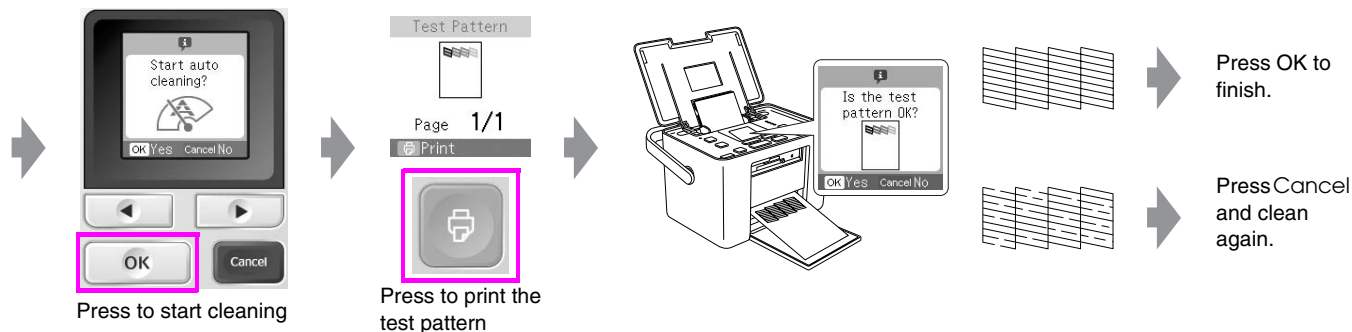
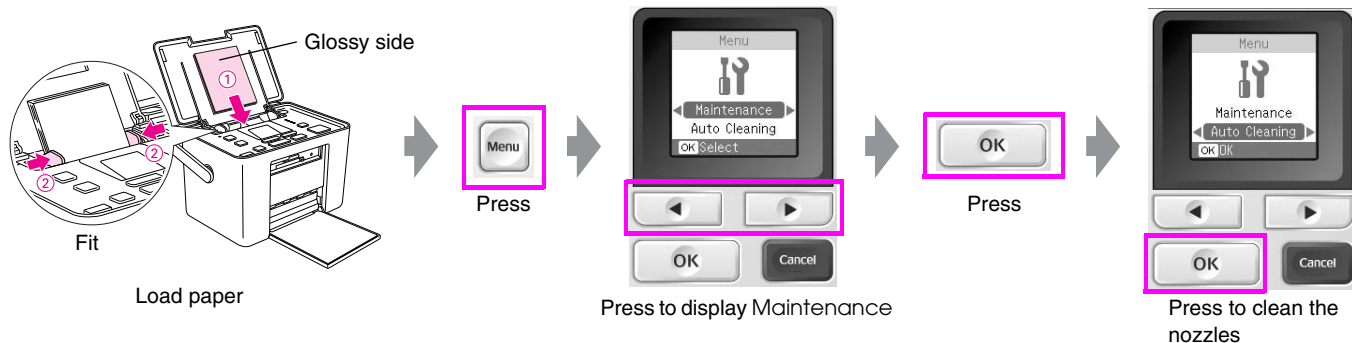


Close



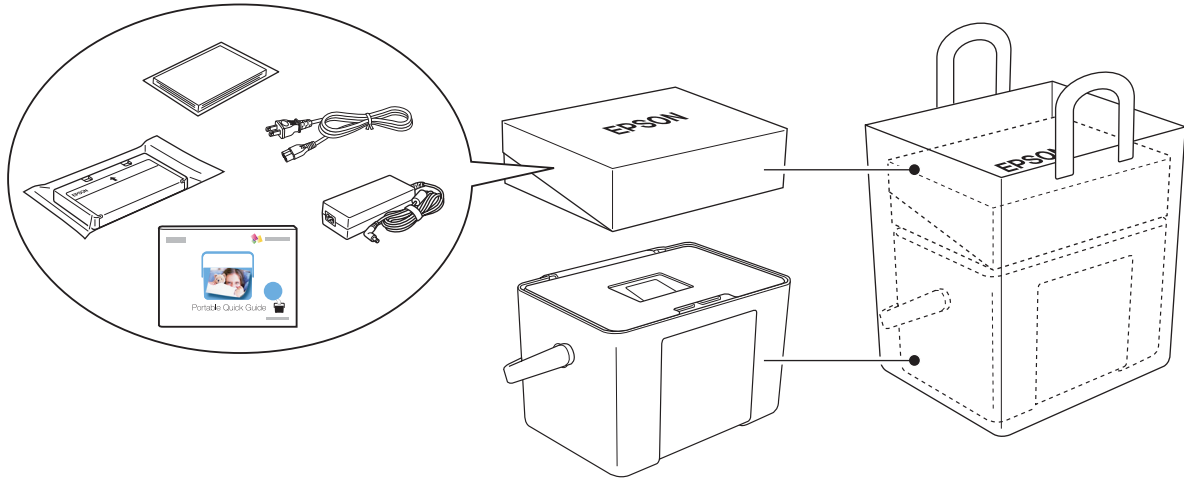
## If banding appears on your photo

Follow the steps below to clean the nozzles and print a test pattern to check the results of cleaning.



## Packing the PictureMate to take with you

When you take your PictureMate, you can keep the cables, accessories, PicturePack, and Portable Quick Guide (this manual) in the travel case that came with the PictureMate. Bringing a spare photo cartridge is recommended.



\*410556000\*