



Cautions and Notes

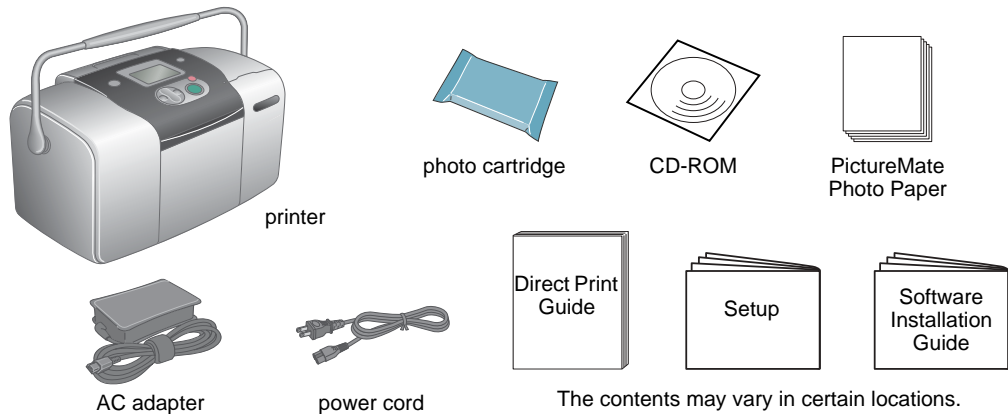


**Cautions** must be observed to avoid damage to your equipment.

**Notes** contain important information and useful tips on the operation of your printer.

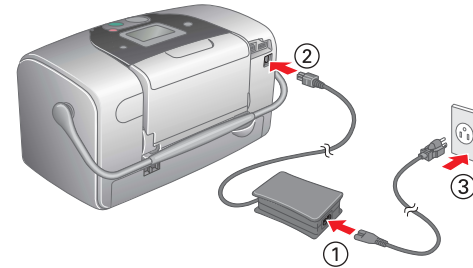
**1 Unpacking**

Remove the contents from the box. Remove all tape from the printer.



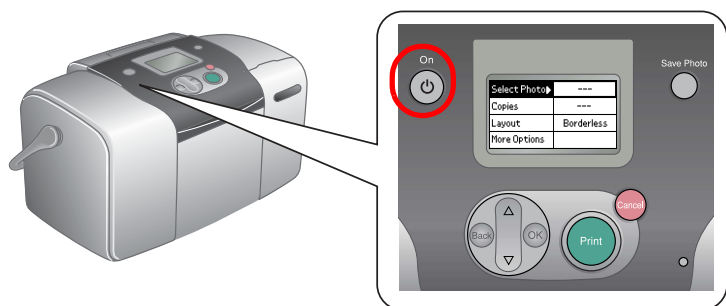
**2 Getting Started**

Connect the power cord and AC adapter, then plug in the printer.

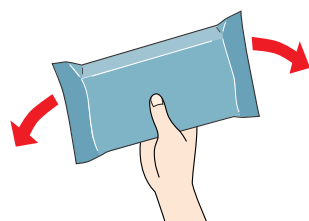


**3 Installing the Photo Cartridge**

1. Press the **On** button to turn on the printer.

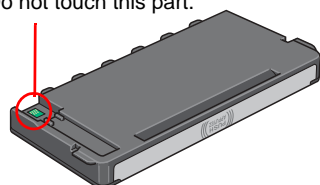


2. Shake the new photo cartridge four or five times.



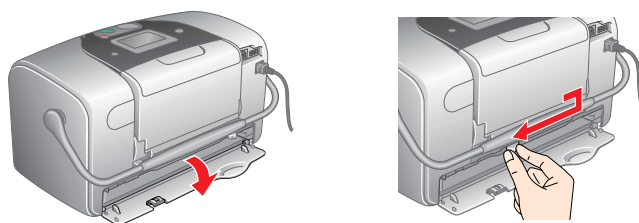
3. Remove the photo cartridge from its protective bag.

Do not touch this part.

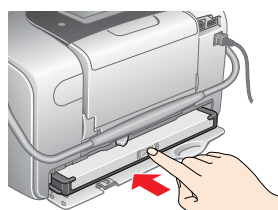


- Caution:**
- ❑ Do not shake the photo cartridge after removing it from the bag; it can cause leakage.
  - ❑ Do not remove or tear the label on the cartridge; this can cause leakage.

4. Open the cover on the back of the printer. Slide the lever into the **Release** position by sliding it in the direction shown.

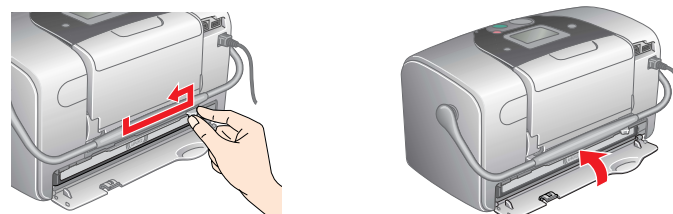


5. Place the cartridge properly into the cartridge holder, then push it in until you feel resistance and hear the cartridge faintly click into place.



**Note:** After installing the cartridge, make sure the sides of the cartridge are even. If either side of the cartridge sticks out, push the side of the cartridge until it clicks.

6. Set the lever to the **Lock** position by sliding it in the direction shown. Close the cover.



**Caution:** Do not load paper until ink charging is complete.

**Note:**

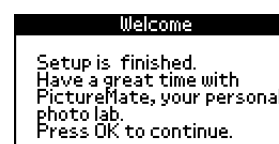
If you cannot close the cover, the photo cartridge is not installed correctly. Go back to Step 4 and eject the photo cartridge. Then install the photo cartridge again.

7. The printer automatically starts to charge ink. Charging takes about three minutes.



**Caution:** Do not turn off the printer during the ink charging process.

8. Press the **OK** button to finish.



**Note:**

The photo cartridge packaged with your printer is partly used during initial setup. In order to produce high quality printouts, the print head in your printer will be fully charged with ink. This one-off process consumes a quantity of ink and subsequent cartridge will last for their full rated life.

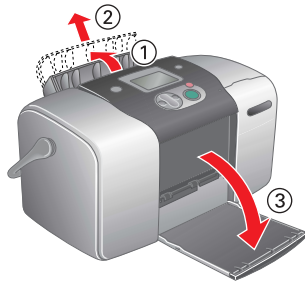


## 4 Printing a Photo from a Memory Card

The example below demonstrates how to print a proof sheet of photos and then a Borderless photo.

### Loading Paper

1. Open the paper support and output tray.



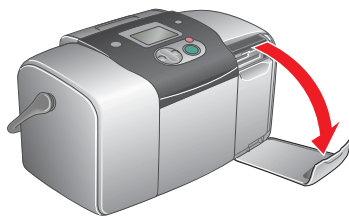
2. Load PictureMate Photo Paper into the paper feeder. Then slide the left edge guide against the left edge of the paper.



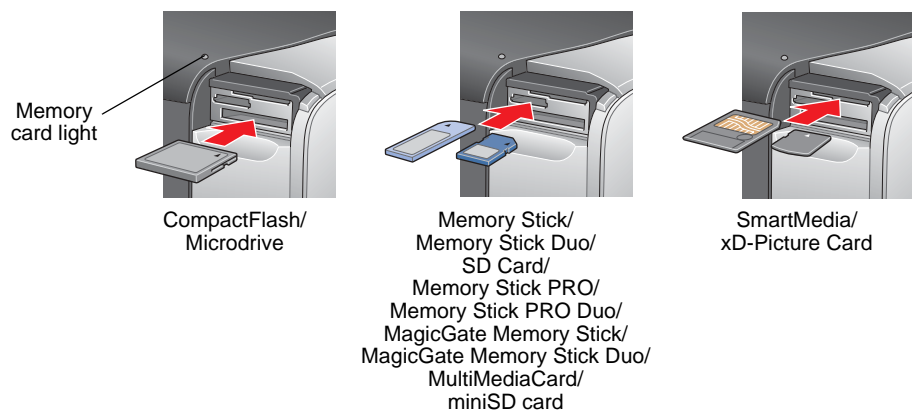
### Printing a Proof Sheet

Your Proof sheet shows up to 20 small thumbnail versions of your photos with the photo numbers and names. Print a Proof Sheet of photos.

1. Open the memory card slot cover.

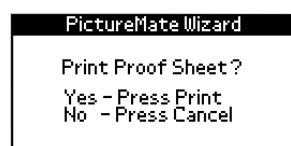


2. Insert the memory card containing your photos into the appropriate memory card slot. When the card is in, the memory card light comes on.



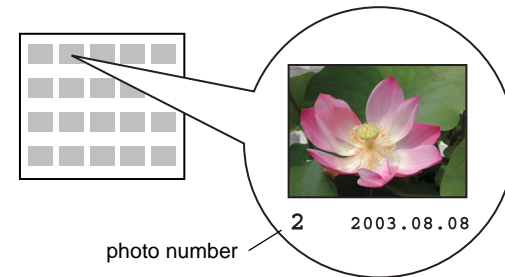
**Note:**  
For the available memory card, refer the Direct Print Guide.

3. Close the memory card slot cover.
4. The Print Wizard appears when a memory card is inserted. If it does not appear, reinsert the memory card. Press the **Print** button to print a proof sheet.



**Note:**  
For information about printing without using the Print Wizard, see the Direct Print Guide.

5. Look at the Proof Sheet and choose the photo you want to print. The photo number will be entered in the following procedure.



### Printing a Photo

Print a photo selected from the index.

1. If the screen below appears on the panel, press the **OK** button.



2. Press the **▲** or **▼** button to select the photo number, and then press the **OK** button.



3. Press the **▲** or **▼** button to select the number of copies, then press the **OK** button.



4. Press the **Print** button.

Select Photo	Several
Copies	Selected
Layout	Borderless
More Options	



5. The confirmation screen below appears. Press the **Print** button.



6. Now you have printed a photo!



**For more information about PictureMate**

If you print without using a PC, see the *Direct Print Guide*.

**For PC users:**

If you use the printer by connecting to a PC, see *Software Installation Guide* to install the software.