

PictureMate 500 Start Here



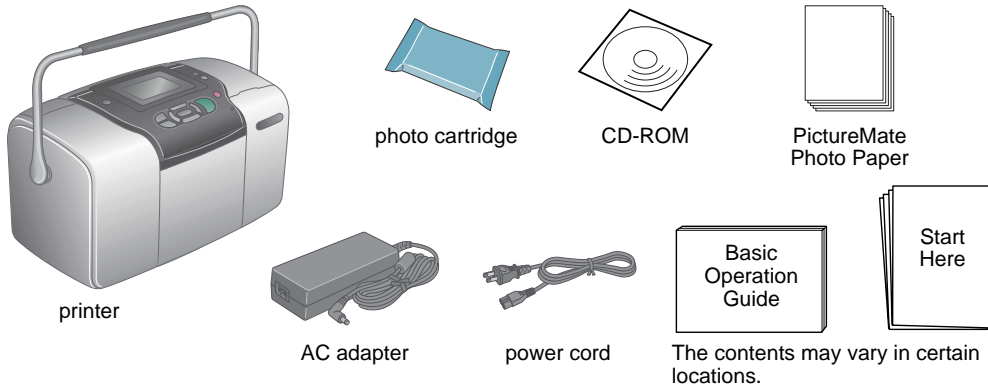
Cautions and Notes

! **Cautions** must be observed to avoid damage to your equipment.

Notes contain important information and useful tips on the operation of your printer.

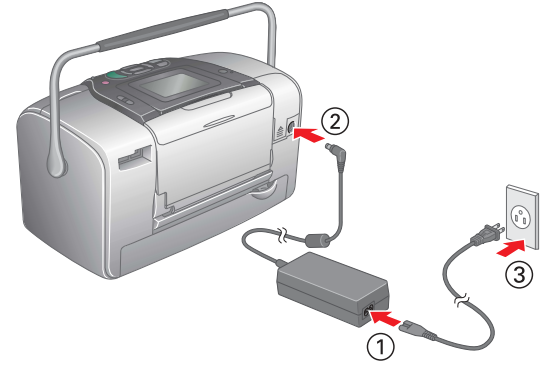
1 Unpacking

Remove the contents from the box. Remove all tape from the printer.



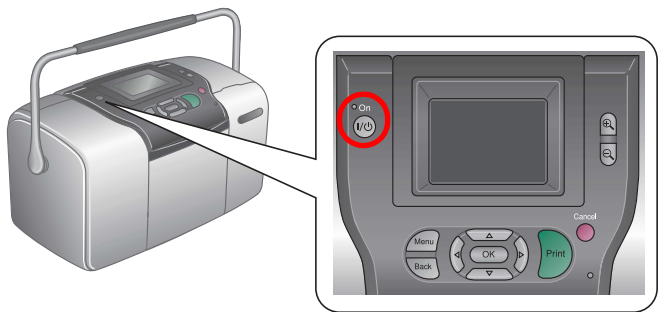
2 Getting Started

Connect the power cord and AC adapter, then plug in the printer.



3 Installing the Photo Cartridge

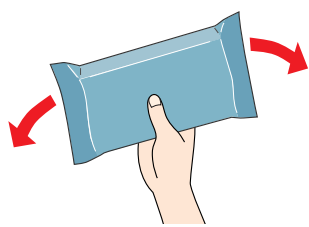
1. Press **On** to turn on the printer.



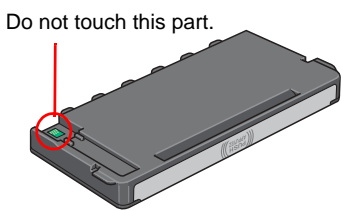
Note: If the language setting appears, press **Up** or **Down** to highlight your preferred language, then press **OK**. This setting appears in some areas.



2. Shake the new photo cartridge four or five times.

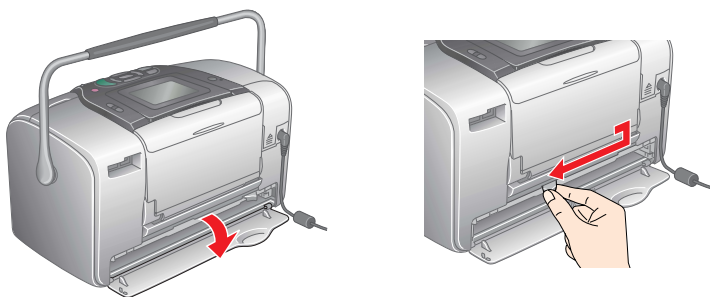


3. Remove the photo cartridge from its protective bag.

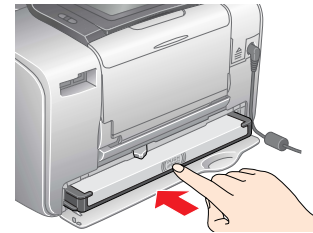


- !** **Caution:**
- Do not shake the photo cartridge after removing it from the bag; it can cause leakage.
 - Do not remove or tear the label on the cartridge; this can cause leakage.

4. Open the cover on the back of the printer. Slide the lever into the **Release** position by sliding it in the direction shown.

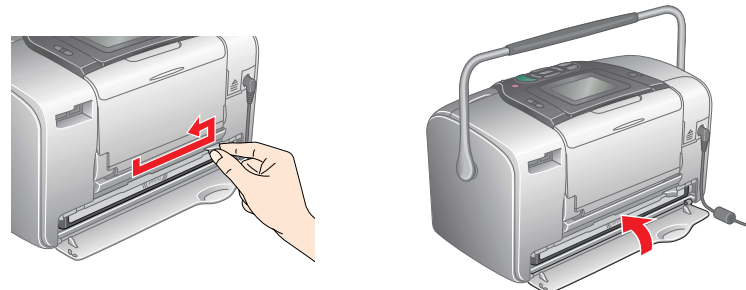


5. Place the cartridge properly into the cartridge holder, then push it in until you feel resistance and hear the cartridge faintly click into place.



Note: After installing the cartridge, make sure the sides of the cartridge are even. If either side of the cartridge sticks out, push the side of the cartridge until it clicks.

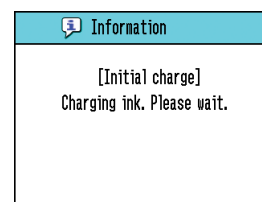
6. Set the lever to the **Lock** position by sliding it in the direction shown. Close the cover.



! **Caution:** Do not load paper until ink charging is complete.

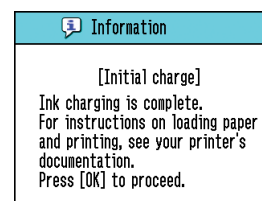
Note: If you cannot close the cover, the photo cartridge is not installed correctly. Go back to Step 4 and eject the photo cartridge. Then install the photo cartridge again.

7. The printer automatically starts to charge ink. Charging takes about three minutes.



! **Caution:** Do not turn off the printer during the ink charging process.

8. Press **OK** to finish.



Note: The photo cartridge packaged with your printer is partly used during initial setup. In order to produce high quality printouts, the print head in your printer will be fully charged with ink. This one-off process consumes a quantity of ink and subsequent cartridge will last for their full rated life.

Continue to the next page...



4 Printing Photos from a Memory Card

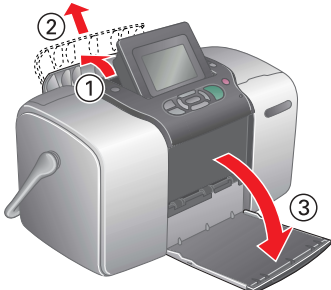
The example below demonstrates how to print **Borderless photos**.

Loading Paper

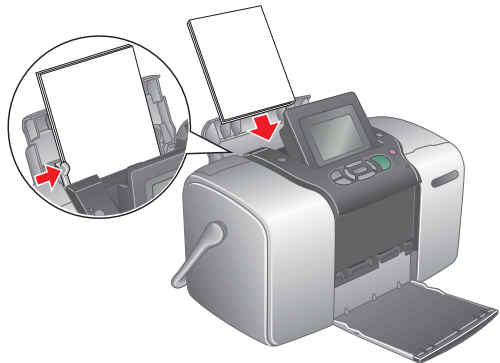
1. Adjust the LCD panel so that you can see it well.



2. Open the paper support and output tray.

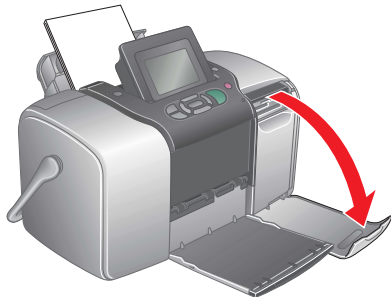


3. Load suitable paper into the paper feeder. Then slide the left edge guide against the left edge of the paper.

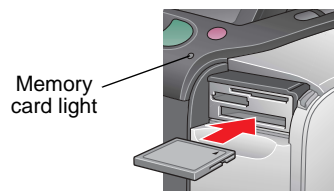


Inserting a Memory Card

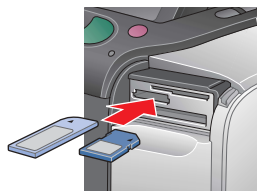
1. Open the memory card slot cover.



2. Insert the memory card containing your photos into the appropriate memory card slot. When the card is in, the memory card light comes on.



CompactFlash/
Microdrive



Memory Stick/
Memory Stick Duo/
SD Card/
Memory Stick PRO/
Memory Stick PRO Duo/
MagicGate Memory Stick/
MagicGate Memory Stick Duo/
MultiMediaCard/
miniSD card



SmartMedia/
xD-Picture Card/
xD-Picture Card Type M

Note:

For the available memory card, refer the Basic Operation Guide.

3. Close the memory card slot cover.

Printing Photos

Note:

If there is DPOF data on the memory card, an information display appears. See Basic Operation Guide to print DPOF data.

1. When the following display appears, press \leftarrow or \rightarrow to highlight **Print Some**, then press **OK**.



2. Press \leftarrow or \rightarrow to view the photo you want to print.



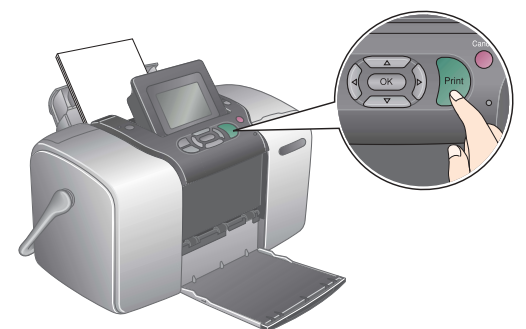
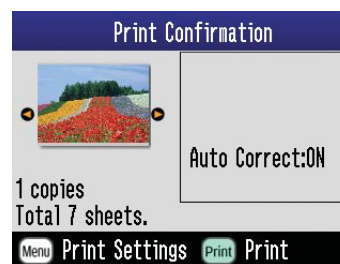
3. Press \uparrow or \downarrow to select the number of copies you want to print.



4. Repeat steps 2 and 3 for additional photos.

5. Press **OK**.

6. The confirmation screen below appears. Confirm your print selections, then press **Print**.



7. Now you have printed photos!



5 Getting More Information

For more information about PictureMate

Printing without a computer

See the *Basic Operation Guide* to learn about printing and saving photos without using a computer.

Printing with a computer

See the *Basic Operation Guide* for steps on installing the software. See the online *User's Guide* for instructions on printing with a computer.