

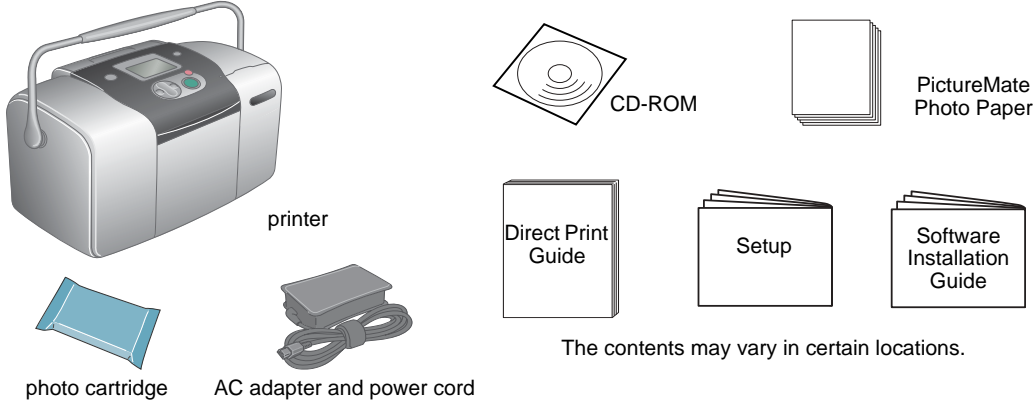


Cautions must be observed to avoid damage to your equipment.

Notes contain important information and useful tips on the operation of your printer.

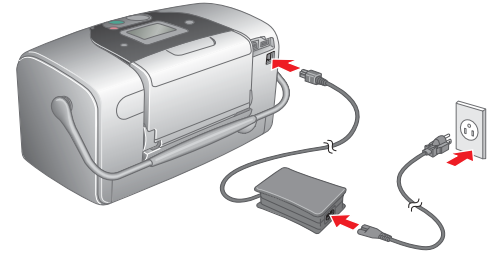
1 Unpacking

Remove the contents from the box. Remove all tape from the printer.



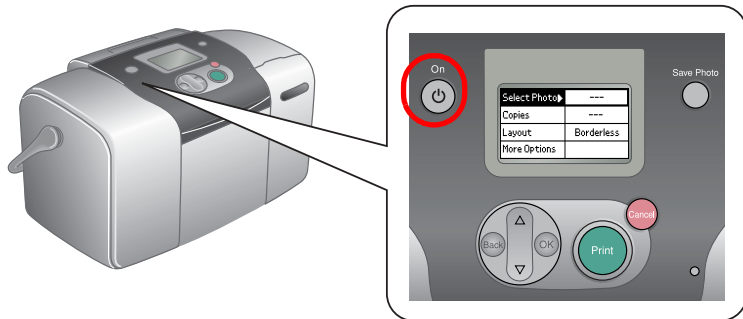
2 Getting Started

Connect the power cord and AC adapter, then plug in the printer.

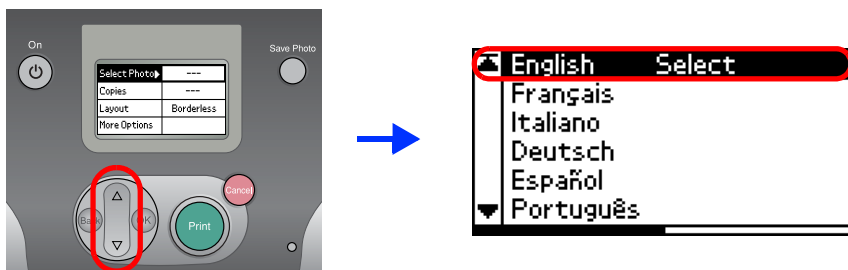


3 Installing the Photo Cartridge

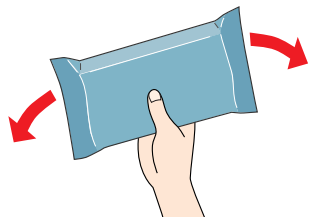
1. Press the On button to turn on the printer.



Note:
 If the language setting appears, press the button to highlight your preferred language, then press the **OK** button. This setting appears in some areas.

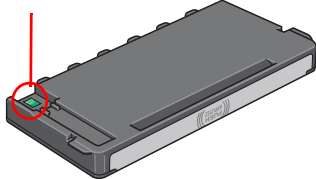


2. Shake the new photo cartridge four or five times.



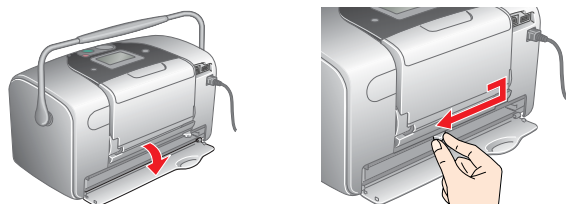
3. Remove the photo cartridge from its protective bag.

Do not touch this part.

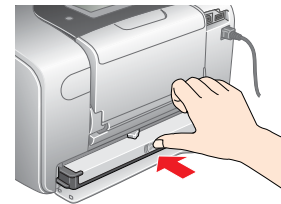


- Caution:**
- ❑ Do not shake the photo cartridge after removing it from the bag; it can cause leakage.
 - ❑ Do not remove or tear the label on the cartridge; this can cause leakage.

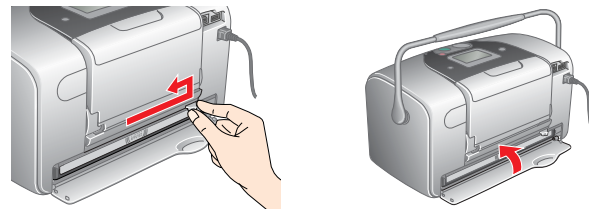
4. Open the cover on the back of the printer. Slide the lever to the right, then down and to the left.



5. Place the cartridge properly into the cartridge holder, then push in the cartridge until it clicks into place.



6. Slide the lever to the right, then up and a little to the left. Close the cover.



Caution:
 Do not load paper until ink charging is complete.

7. The printer automatically starts to charge ink. Charging takes about three minutes.



Caution:
 Do not turn off the printer during the ink charging process.

8. Press the **OK** button to finish.



Note:

The photo cartridge packaged with your printer is partly used during initial setup. In order to produce high quality printouts, the print head in your printer will be fully charged with ink. This one-off process consumes a quantity of ink and subsequent cartridge will last for their full rated life.



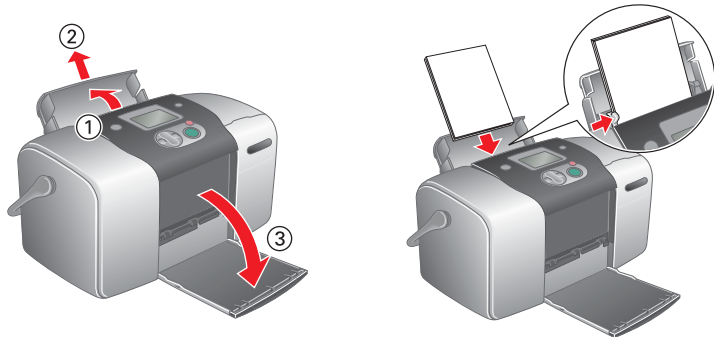
4 Printing a Photo from a Memory Card

The example below demonstrates how to print an index of photos and then a Borderless photo.

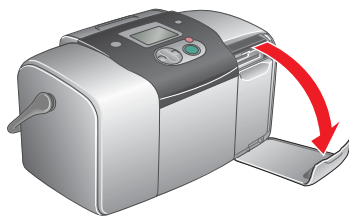
Printing an Index

Print an index of photos.

1. Open the paper support and output tray, then load PictureMate Photo Paper into the paper feeder. Then slide the left edge guide against the left edge of the paper.



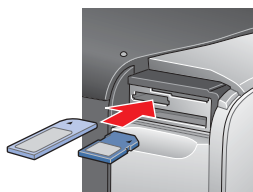
2. Open the memory card slot cover.



3. Insert the memory card containing your photos into the appropriate memory card slot.



CompactFlash/
Microdrive



Memory Stick/
Memory Stick Duo/
SD Card/
MultiMediaCard/
miniSD card

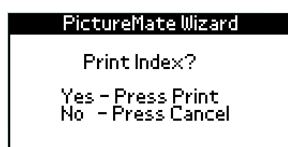


SmartMedia/
xD-Picture Card

Note:

For the available memory card, refer the Direct Print Guide.

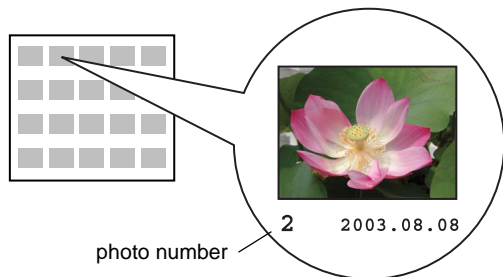
4. The Print Wizard appears when a memory card is inserted. If it does not appear, reinsert the memory card. Press the **Print** button to print an index.



Note:

For information about printing without using the Print Wizard, see the Direct Print Guide.

5. Look at the index and choose the photo you want to print. The photo number will be entered in the following procedure.



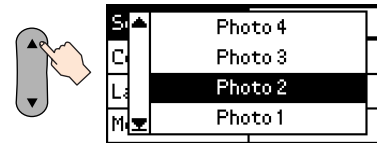
Printing a Photo

Print a photo selected from the index.

1. If the screen below appears on the panel, press the **OK** button.



2. Press the **▲** or **▼** button to select the photo number, and then press the **OK** button.

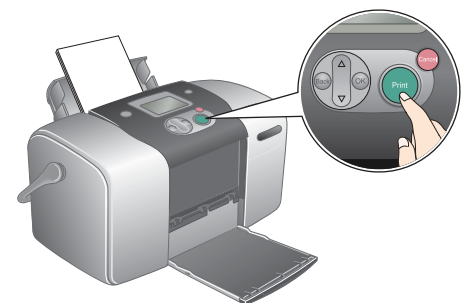


3. Press the **▲** or **▼** button to select the number of copies, then press the **OK** button.

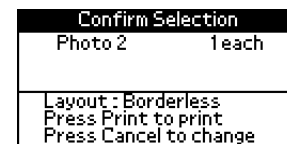


4. Press the **Print** button.

Select Photo	Several
Copies	Selected
Layout	Borderless
More Options	



5. The confirmation screen below appears. Press the **Print** button.



6. Now you have printed a photo!



For more information about PictureMate
If you print without using a PC, see the **Direct Print Guide**.

For PC users:

If you use the printer by connecting to a PC, see Software Installation Guide to install the software.